

MEDICAID BLOOD LEAD TESTING

*Michigan Department
of Community Health*



June 2009

Blood Lead Testing Methodology

- **Children must have been eligible for one of the following programs in June 2009**
 - Medicaid Managed Care (MC)
 - enrolled in a Medicaid Health Plan (MHP)
 - Medicaid Fee-for-Service (FFS)
 - enrolled for Medicaid Only FFS coverage
 - Medicaid and CSHCS Dual Eligible (Duals)
 - dually eligible for both Medicaid and CSHCS
- **Blood Lead testing results include children tested:**
 - on or before indicated birthday for 2 and 3 year olds
 - at any time between ages 1 to 6
- **Unique Client Identifier (UCI) used to establish link between Medicaid and lead databases.**

Blood Lead Testing Summary

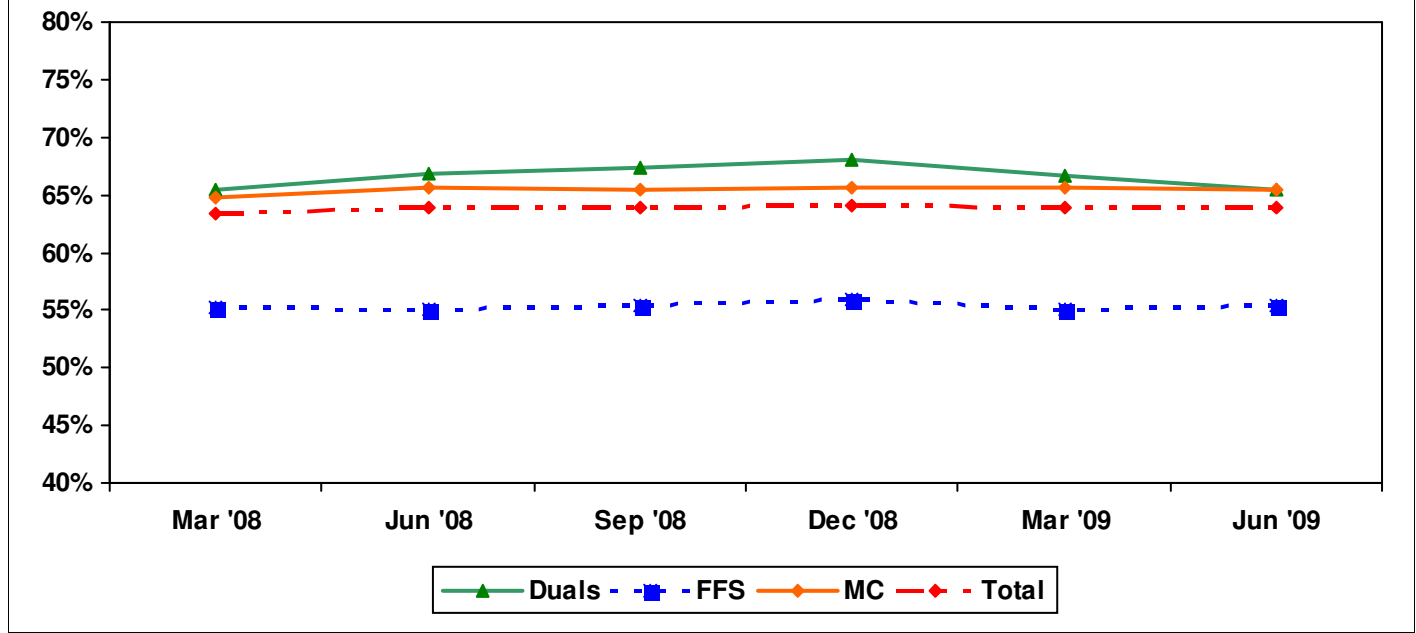
- **2 year old children tested on or before their 2nd birthday**

- 64% Statewide
- 68% City of Detroit
- 65% Statewide for Medicaid MC
 - 74% Statewide for Medicaid MC with 12-Month Continuous Enrollment
- 55% Statewide for Medicaid Only FFS Eligibles
- 65% Statewide for CSHCS Duals

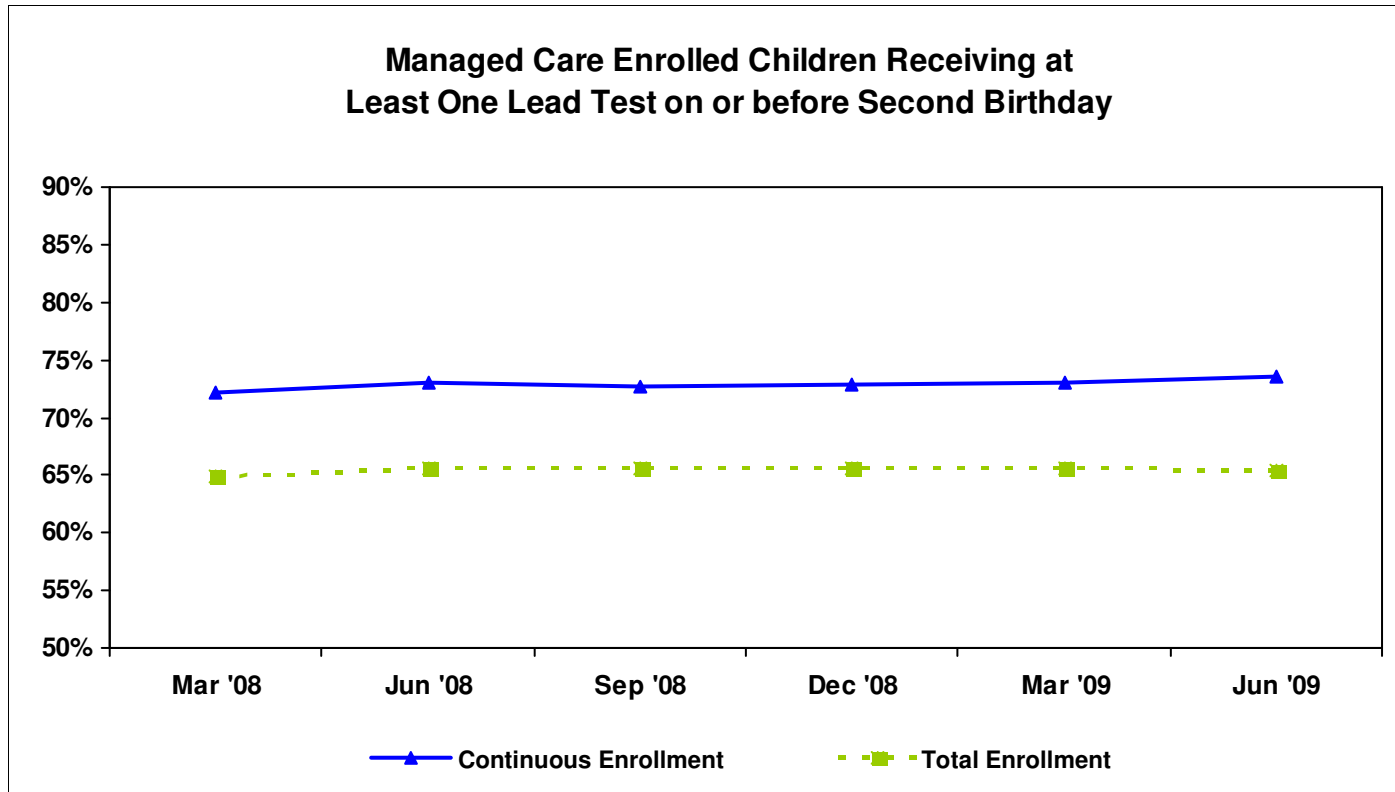
- **3 year old children tested on or before their 3rd birthday**

- 71% Statewide
- 79% City of Detroit
- 73% Statewide for Medicaid MC
 - 81% Statewide for Medicaid MC with 12-Month Continuous Enrollment
- 63% Statewide for Medicaid Only FFS Eligibles
- 73% Statewide for CSHCS Duals

Children Receiving at Least One Blood Lead Test on or before Second Birthday by Program Eligibility



Managed Care Enrolled Children Receiving at Least One Lead Test on or before Second Birthday



Total Enrollment

-Enrolled in measurement month

Continuous Enrollment

-Based on MMIS eligibility system

-Enrolled in same health plan for the measurement month and 12 months preceding 2nd birthday, with a 1-month allowable gap.

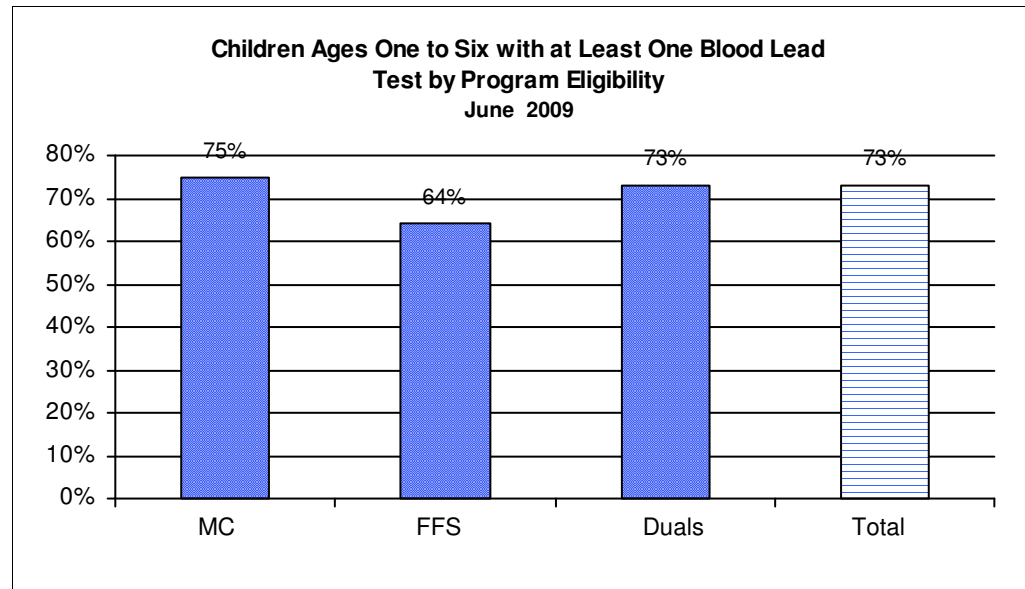
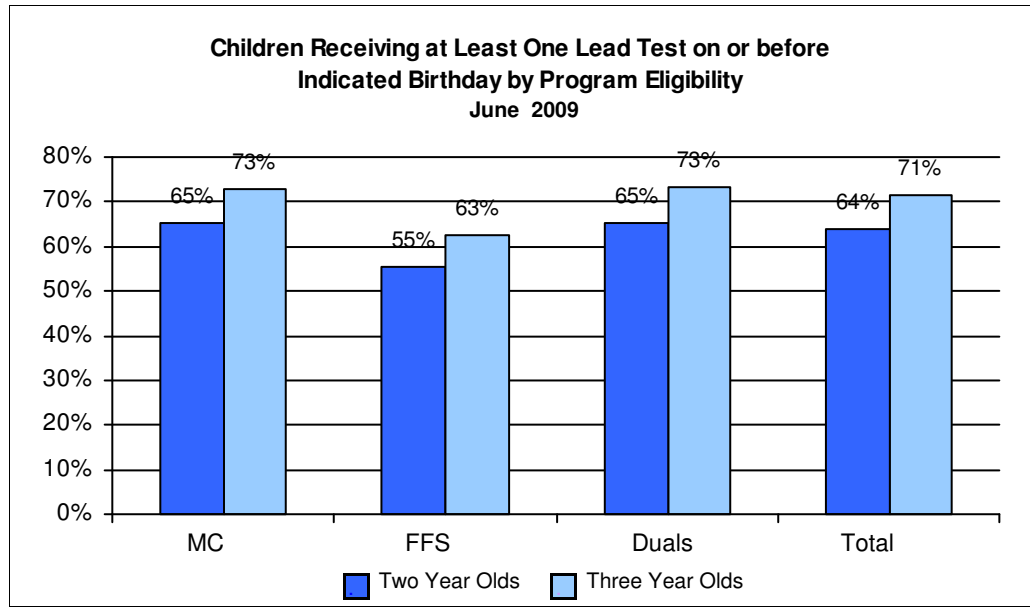


Table 1. Percent of Children with at Least One Blood Lead Test on or before their Second Birthday

Program	Jun-08	Jul-08	Aug-08	Sep-08	Oct-08	Nov-08	Dec-08	Jan-09	Feb-09	Mar-09	Apr-09	May-09	Jun-09
MC	65.6%	65.5%	65.6%	65.5%	65.7%	65.4%	65.6%	65.5%	65.4%	65.6%	65.7%	65.7%	65.4%
FFS	55.0%	55.7%	55.6%	55.5%	55.7%	56.4%	55.9%	56.2%	56.0%	55.1%	55.6%	54.6%	55.3%
Duals	66.8%	67.3%	65.9%	67.4%	68.2%	67.5%	68.0%	67.5%	66.9%	66.6%	66.0%	65.7%	65.5%
Total	63.9%	64.0%	64.0%	63.9%	64.1%	64.1%	64.1%	64.1%	64.1%	63.9%	64.0%	63.7%	63.8%

Table 2. Percent of Children with at Least One Blood Lead Test on or before their Third Birthday

Program	Jun-08	Jul-08	Aug-08	Sep-08	Oct-08	Nov-08	Dec-08	Jan-09	Feb-09	Mar-09	Apr-09	May-09	Jun-09
MC	73.9%	74.0%	74.2%	74.3%	74.5%	74.1%	74.2%	74.0%	73.7%	73.6%	73.6%	73.6%	73.0%
FFS	61.9%	61.9%	62.9%	62.5%	61.8%	62.0%	62.5%	62.1%	63.1%	62.5%	63.2%	62.4%	62.5%
Duals	69.5%	70.3%	70.4%	70.0%	71.0%	71.1%	71.9%	72.9%	71.9%	71.8%	73.5%	73.3%	73.1%
Total	71.8%	72.0%	72.2%	72.2%	72.3%	72.1%	72.2%	72.1%	72.0%	71.6%	71.8%	71.5%	71.4%

Table 3. Percent of Children Ages One to Six with at Least One Blood Lead Test

Program	Jun-08	Jul-08	Aug-08	Sep-08	Oct-08	Nov-08	Dec-08	Jan-09	Feb-09	Mar-09	Apr-09	May-09	Jun-09
MC	72.9%	73.4%	73.3%	73.8%	74.1%	74.1%	74.1%	73.8%	73.4%	73.7%	73.8%	74.7%	75.0%
FFS	62.5%	63.3%	63.7%	64.1%	64.1%	64.2%	64.0%	64.1%	63.8%	63.2%	63.7%	64.5%	64.4%
Duals	69.9%	70.9%	70.0%	70.5%	70.8%	71.0%	71.3%	71.5%	71.2%	71.5%	71.7%	72.6%	72.9%
Total	71.1%	71.7%	71.7%	72.1%	72.4%	72.5%	72.4%	72.3%	71.9%	71.9%	72.0%	73.0%	73.1%

Table 4. Statewide Blood Lead Testing of Two and Three Year Old Children for All Programs

June 2009

County	2 Years of Age			3 Years of Age		
	Eligibles	Eligibles with at least 1 test on or before their 2nd birthday	Percent of Eligibles with at least 1 test on or before their 2nd birthday	Eligibles	Eligibles with at least 1 test on or before their 3rd birthday	Percent of Eligibles with at least 1 test on or before their 3rd birthday
ALCONA	49	37	76%	38	33	87%
ALGER	36	31	86%	47	40	85%
ALLEGAN	669	406	61%	640	434	68%
ALPENA	156	119	76%	167	134	80%
ANTRIM	128	93	73%	115	75	65%
ARENAC	90	65	72%	94	65	69%
BARAGA	49	34	69%	57	46	81%
BARRY	322	221	69%	266	201	76%
BAY	623	469	75%	561	452	81%
BENZIE	92	62	67%	99	70	71%
BERRIEN	1,121	780	70%	1,068	762	71%
BRANCH	324	145	45%	307	160	52%
CALHOUN	1,039	738	71%	952	700	74%
CASS	330	180	55%	308	200	65%
CHARLEVOIX	128	100	78%	122	91	75%
CHEBOYGAN	175	128	73%	149	102	68%
CHIPPEWA	227	165	73%	179	132	74%
CLARE	217	145	67%	191	110	58%
CLINTON	262	165	63%	245	173	71%
CRAWFORD	65	37	57%	59	36	61%
DELTA	189	137	72%	190	152	80%
DICKINSON	143	120	84%	127	104	82%
EATON	434	297	68%	433	311	72%
EMMET	174	116	67%	173	117	68%
GENESEE	3,225	1,918	59%	3,049	2,201	72%
GLADWIN	141	106	75%	126	82	65%
GOGEBIC	84	53	63%	66	52	79%
GRAND TRAVERSE	407	188	46%	377	147	39%
GRATIOT	260	143	55%	252	180	71%
HILLSDALE	300	179	60%	280	193	69%
HOUGHTON	194	137	71%	177	137	77%
HURON	176	133	76%	164	132	80%
INGHAM	1,572	1,164	74%	1,444	1,152	80%
IONIA	371	195	53%	347	227	65%
IOSCO	134	97	72%	141	109	77%
IRON	57	47	82%	49	36	73%
ISABELLA	311	188	60%	324	205	63%
JACKSON	1,015	698	69%	934	737	79%
KALAMAZOO	1,400	1,002	72%	1,333	1,000	75%
KALKASKA	132	85	64%	129	71	55%
KENT	4,094	2,937	72%	3,628	2,882	79%
KEWEENAW	6	5	83%	6	4	67%

County	2 Years of Age			3 Years of Age		
	Eligibles	Eligibles with at least 1 test on or before their 2nd birthday	Percent of Eligibles with at least 1 test on or before their 2nd birthday	Eligibles	Eligibles with at least 1 test on or before their 3rd birthday	Percent of Eligibles with at least 1 test on or before their 3rd birthday
LAKE	81	45	56%	89	59	66%
LAPEER	408	234	57%	391	281	72%
LEELANAU	55	32	58%	53	28	53%
LENAWEE	563	400	71%	532	400	75%
LIVINGSTON	435	252	58%	476	257	54%
LUCE	34	29	85%	37	34	92%
MACKINAC	50	41	82%	45	40	89%
MACOMB	3,476	1,904	55%	3,315	1,965	59%
MANISTEE	112	85	76%	110	84	76%
MARQUETTE	270	194	72%	269	214	80%
MASON	207	143	69%	196	122	62%
MECOSTA	273	196	72%	245	174	71%
MENOMINEE	108	77	71%	90	74	82%
MIDLAND	369	125	34%	317	183	58%
MISSAUKEE	94	63	67%	72	42	58%
MONROE	690	464	67%	614	413	67%
MONTCALM	403	235	58%	390	280	72%
MONTMORENCY	45	34	76%	53	39	74%
MUSKEGON	1,409	846	60%	1,299	948	73%
NEWAYGO	307	189	62%	341	245	72%
OAKLAND	3,714	2,248	61%	3,503	2,392	68%
OCEANA	261	168	64%	260	190	73%
OGEMAW	143	112	78%	117	90	77%
ONTONAGON	32	23	72%	31	24	77%
OSCEOLA	159	88	55%	128	70	55%
OSCODA	51	41	80%	47	36	77%
OTSEGO	176	124	70%	142	76	54%
OTTAWA	1,160	587	51%	1,090	617	57%
PRESQUE ISLE	56	43	77%	42	29	69%
ROSCOMMON	130	87	67%	149	81	54%
SAGINAW	1,348	981	73%	1,318	1,077	82%
ST CLAIR	967	586	61%	916	573	63%
ST JOSEPH	493	247	50%	522	325	62%
SANILAC	249	176	71%	259	197	76%
SCHOOLCRAFT	37	31	84%	45	39	87%
SHIAWASSEE	411	293	71%	386	303	78%
TUSCOLA	300	232	77%	336	274	82%
VAN BUREN	556	318	57%	550	346	63%
WASHTENAW	1,203	570	47%	1,136	676	60%
DETROIT, CITY OF	9,450	6,384	68%	9,056	7,177	79%
WAYNE, ex Detroit	5,020	2,879	57%	4,879	3,311	68%
WEXFORD	278	186	67%	279	173	62%
MICHIGAN	56,504	36,057	64%	53,538	38,205	71%

**Table 5. Statewide Blood Lead Testing of Two and Three Year Old Children Enrolled in Managed Care
June 2009**

County	2 Years of Age			3 Years of Age		
	Eligibles	Eligibles with at least 1 test on or before their 2nd birthday	Percent of Eligibles with at least 1 test on or before their 2nd birthday	Eligibles	Eligibles with at least 1 test on or before their 3rd birthday	Percent of Eligibles with at least 1 test on or before their 3rd birthday
ALCONA	41	32	78%	32	29	91%
ALGER	26	22	85%	34	29	85%
ALLEGAN	526	342	65%	500	349	70%
ALPENA	129	102	79%	135	106	79%
ANTRIM	106	76	72%	91	62	68%
ARENAC	75	53	71%	79	56	71%
BARAGA	24	13	54%	32	25	78%
BARRY	188	135	72%	134	104	78%
BAY	533	414	78%	464	386	83%
BENZIE	71	52	73%	79	59	75%
BERRIEN	959	685	71%	911	658	72%
BRANCH	261	125	48%	242	139	57%
CALHOUN	894	639	71%	805	599	74%
CASS	261	149	57%	245	162	66%
CHARLEVOIX	56	45	80%	37	24	65%
CHEBOYGAN	58	38	66%	65	43	66%
CHIPPEWA	132	94	71%	103	75	73%
CLARE	79	51	65%	65	36	55%
CLINTON	199	131	66%	185	134	72%
CRAWFORD	51	27	53%	40	27	68%
DELTA	153	114	75%	147	119	81%
DICKINSON	113	92	81%	105	86	82%
EATON	334	239	72%	337	245	73%
EMMET	2	1	50%	2	2	100%
GENESEE	2,814	1,708	61%	2,651	1,933	73%
GLADWIN	109	82	75%	101	66	65%
GOGEBIC	70	46	66%	49	40	82%
GRAND TRAVERSE	171	84	49%	126	47	37%
GRATIOT	215	126	59%	210	150	71%
HILLSDALE	252	156	62%	230	167	73%
HOUGHTON	165	117	71%	150	114	76%
HURON	138	105	76%	124	101	81%
INGHAM	1,314	986	75%	1,251	1,006	80%
IONIA	291	152	52%	250	159	64%
IOSCO	116	85	73%	118	93	79%
IRON	48	41	85%	42	32	76%
ISABELLA	253	154	61%	252	164	65%
JACKSON	856	602	70%	773	625	81%
KALAMAZOO	1,196	866	72%	1,109	851	77%
KALKASKA	13	6	46%	12	7	58%
KENT	3,479	2,564	74%	3,077	2,483	81%
KEWEENAW	4	4	100%	5	4	80%

County	2 Years of Age			3 Years of Age		
	Eligibles	Eligibles with at least 1 test on or before their 2nd birthday	Percent of Eligibles with at least 1 test on or before their 2nd birthday	Eligibles	Eligibles with at least 1 test on or before their 3rd birthday	Percent of Eligibles with at least 1 test on or before their 3rd birthday
LAKE	64	36	56%	72	49	68%
LAPEER	329	201	61%	317	236	74%
LEELANAU	13	5	38%	12	8	67%
LENAWEE	463	339	73%	422	328	78%
LIVINGSTON	346	205	59%	401	231	58%
LUCE	23	19	83%	29	27	93%
MACKINAC	27	21	78%	24	21	88%
MACOMB	2,897	1,660	57%	2,722	1,677	62%
MANISTEE	89	68	76%	85	68	80%
MARQUETTE	221	162	73%	213	178	84%
MASON	165	115	70%	164	101	62%
MECOSTA	218	160	73%	195	143	73%
MENOMINEE	77	55	71%	65	54	83%
MIDLAND	139	53	38%	118	64	54%
MISSAUKEE	75	53	71%	57	32	56%
MONROE	563	394	70%	497	331	67%
MONTCALM	321	199	62%	298	221	74%
MONTMORENCY	32	24	75%	45	34	76%
MUSKEGON	1,198	732	61%	1,083	803	74%
NEWAYGO	256	163	64%	278	203	73%
OAKLAND	3,157	1,960	62%	2,955	2,070	70%
OCEANA	193	131	68%	216	158	73%
OGEMAW	122	96	79%	101	79	78%
ONTONAGON	26	20	77%	26	20	77%
OSCEOLA	122	67	55%	95	49	52%
OSCODA	41	35	85%	40	32	80%
OTSEGO	136	102	75%	108	64	59%
OTTAWA	878	458	52%	799	470	59%
PRESQUE ISLE	49	39	80%	33	24	73%
ROSCOMMON	111	73	66%	127	73	57%
SAGINAW	1,160	867	75%	1,153	950	82%
ST CLAIR	789	511	65%	773	494	64%
ST JOSEPH	407	208	51%	426	266	62%
SANILAC	210	151	72%	212	164	77%
SCHOOLCRAFT	35	29	83%	38	33	87%
SHIAWASSEE	337	247	73%	302	248	82%
TUSCOLA	234	181	77%	258	217	84%
VAN BUREN	448	262	58%	434	279	64%
WASHTENAW	1,050	495	47%	991	602	61%
DETROIT, CITY OF	8,137	5,562	68%	7,863	6,277	80%
WAYNE, ex Detroit	4,458	2,617	59%	4,355	3,031	70%
WEXFORD	108	72	67%	106	68	64%
MICHIGAN	46,499	30,402	65%	43,907	32,073	73%

Table 6. Statewide Blood Lead Testing of Two and Three Year Old Children Eligible for Medicaid Only Fee-for-Service Coverage

June 2009

County	2 Years of Age			3 Years of Age		
	Eligibles	Eligibles with at least 1 test on or before their 2nd birthday	Percent of Eligibles with at least 1 test on or before their 2nd birthday	Eligibles	Eligibles with at least 1 test on or before their 3rd birthday	Percent of Eligibles with at least 1 test on or before their 3rd birthday
ALCONA	8	5	63%	6	4	67%
ALGER	8	8	100%	13	11	85%
ALLEGAN	127	54	43%	132	79	60%
ALPENA	25	16	64%	24	21	88%
ANTRIM	19	15	79%	21	11	52%
ARENAC	15	12	80%	12	7	58%
BARAGA	25	21	84%	24	21	88%
BARRY	126	79	63%	122	88	72%
BAY	79	48	61%	88	59	67%
BENZIE	16	8	50%	16	8	50%
BERRIEN	149	83	56%	145	96	66%
BRANCH	52	16	31%	60	19	32%
CALHOUN	121	83	69%	130	89	68%
CASS	59	26	44%	56	33	59%
CHARLEVOIX	68	53	78%	77	61	79%
CHEBOYGAN	111	85	77%	83	58	70%
CHIPPEWA	90	68	76%	73	55	75%
CLARE	131	90	69%	120	68	57%
CLINTON	55	29	53%	57	36	63%
CRAWFORD	13	9	69%	17	7	41%
DELTA	33	20	61%	39	30	77%
DICKINSON	27	25	93%	18	15	83%
EATON	94	54	57%	88	60	68%
EMMET	165	111	67%	167	112	67%
GENESEEE	360	179	50%	354	239	68%
GLADWIN	27	20	74%	22	13	59%
GOGEBIC	14	7	50%	17	12	71%
GRAND TRAVERSE	233	103	44%	241	94	39%
GRATIOT	35	16	46%	38	27	71%
HILLSDALE	38	18	47%	43	21	49%
HOUGHTON	27	18	67%	22	18	82%
HURON	34	24	71%	38	29	76%
INGHAM	220	147	67%	165	123	75%
IONIA	71	38	54%	90	62	69%
IOSCO	17	11	65%	20	14	70%
IRON	9	6	67%	5	2	40%
ISABELLA	48	25	52%	66	38	58%
JACKSON	136	76	56%	130	87	67%
KALAMAZOO	168	107	64%	190	127	67%
KALKASKA	115	76	66%	117	64	55%
KENT	526	306	58%	485	346	71%
KEWEENAW	2	1	50%	1	0	0%

County	2 Years of Age			3 Years of Age		
	Eligibles	Eligibles with at least 1 test on or before their 2nd birthday	Percent of Eligibles with at least 1 test on or before their 2nd birthday	Eligibles	Eligibles with at least 1 test on or before their 3rd birthday	Percent of Eligibles with at least 1 test on or before their 3rd birthday
LAKE	15	7	47%	15	8	53%
LAPEER	69	28	41%	66	38	58%
LEELANAU	42	27	64%	41	20	49%
LENAWEE	94	56	60%	97	65	67%
LIVINGSTON	76	39	51%	68	23	34%
LUCE	10	9	90%	8	7	88%
MACKINAC	22	19	86%	20	18	90%
MACOMB	517	213	41%	522	249	48%
MANISTEE	18	13	72%	18	11	61%
MARQUETTE	45	30	67%	47	29	62%
MASON	39	25	64%	31	20	65%
MECOSTA	50	34	68%	44	26	59%
MENOMINEE	29	20	69%	23	18	78%
MIDLAND	222	71	32%	188	111	59%
MISSAUKEE	17	9	53%	13	9	69%
MONROE	107	59	55%	105	73	70%
MONTCALM	71	29	41%	79	48	61%
MONTMORENCY	7	4	57%	8	5	63%
MUSKEGON	185	99	54%	199	130	65%
NEWAYGO	41	19	46%	56	37	66%
OAKLAND	491	247	50%	479	276	58%
OCEANA	66	36	55%	42	31	74%
OGEMAW	17	12	71%	13	9	69%
ONTONAGON	4	1	25%	5	4	80%
OSCEOLA	28	15	54%	26	16	62%
OSCODA	10	6	60%	5	2	40%
OTSEGO	29	13	45%	27	9	33%
OTTAWA	262	117	45%	265	132	50%
PRESQUE ISLE	6	3	50%	9	5	56%
ROSCOMMON	13	9	69%	18	5	28%
SAGINAW	156	91	58%	150	116	77%
ST CLAIR	155	69	45%	127	68	54%
ST JOSEPH	73	35	48%	85	50	59%
SANILAC	36	22	61%	42	30	71%
SCHOOLCRAFT	2	2	100%	6	6	100%
SHIAWASSEE	62	38	61%	80	52	65%
TUSCOLA	55	43	78%	71	50	70%
VAN BUREN	99	51	52%	110	65	59%
WASHTENAW	126	57	45%	124	60	48%
DETROIT, CITY OF	1,140	701	61%	1,027	763	74%
WAYNE, ex Detroit	470	207	44%	434	215	50%
WEXFORD	163	108	66%	165	98	59%
MICHIGAN	8,835	4,889	55%	8,590	5,371	63%

Table 7: Blood Lead Testing of Two Year Old Children by Length of Enrollment
June 2009

Health Plan Name	Total Enrollment			Continuous Enrollment			
	Eligibles	Eligibles with at least 1 test on or before their 2nd birthday	Percent of Eligibles with at least 1 test on or before their 2nd birthday	Eligibles	Eligibles with at least 1 test on or before their 2nd birthday	Percent of Eligibles with at least 1 test on or before their 2nd birthday	Percentage Point Difference with Continuous Enrollment
BlueCaid of Michigan	971	467	48%	529	306	58%	10
CareSource Michigan	1,889	1,287	68%	1,158	876	76%	8
Great Lakes Health Plan, Inc.	7,971	5,154	65%	4,632	3,292	71%	6
Health Plan of Michigan, Inc.	9,306	6,179	66%	4,733	3,674	78%	11
HealthPlus Partners, Inc.	2,991	2,042	68%	1,905	1,445	76%	8
McLaren Health Plan	2,943	1,992	68%	1,628	1,266	78%	10
Midwest Health Plan	2,755	1,753	64%	1,653	1,199	73%	9
Molina Healthcare of Michigan	8,624	5,558	64%	5,440	3,784	70%	5
OmniCare Health Plan	1,709	1,140	67%	1,069	760	71%	4
PHP MM Family Care	755	575	76%	439	366	83%	7
Priority Health Government Programs, Inc.	2,939	2,009	68%	1,696	1,291	76%	8
ProCare Health Plan	37	17	46%	1	1	100%	54
Total Health Care	1,956	1,215	62%	1,196	828	69%	7
Upper Peninsula Health Plan	1,121	841	75%	714	605	85%	10
Managed Care Totals/Percent	45,967	30,229	66%	26,793	19,693	74%	8
Current Performance Monitoring Standard			N/A			75%	
FFS (Title XIX only)	10,141	5,569	55%	2,593	1,663	64%	9
FFS (Title V/XIX)	1,177	776	66%	963	639	66%	0
FFS Totals (Title XIX & V/XIX)	11,318	6,345	56%	3,556	2,302	65%	9

Total Enrollment

- Based on MMIS eligibility system
- Enrolled in plan (health plan or FFS) for the measurement month

Continuous Enrollment

- Based on MMIS eligibility system
- Enrolled in same plan (health plan or FFS) for the measurement month and 12 months preceding 2nd birthday, with 1-month allowable gap

**Table 8. Blood Lead Testing of Three Year Old Children by Length of Enrollment
June 2009**

Health Plan Name	Total Enrollment			Continuous Enrollment			
	Eligibles	Eligibles with at least 1 test on or before their 3rd birthday	Percent of Eligibles with at least 1 test on or before their 3rd birthday	Eligibles	Eligibles with at least 1 test on or before their 3rd birthday	Percent of Eligibles with at least 1 test on or before their 3rd birthday	Percentage Point Difference with Continuous Enrollment
BlueCaid of Michigan	973	577	59%	531	362	68%	9
CareSource Michigan	1,768	1,264	71%	1,069	839	78%	7
Great Lakes Health Plan, Inc.	7,541	5,423	72%	4,269	3,345	78%	6
Health Plan of Michigan, Inc.	8,156	5,783	71%	4,101	3,352	82%	11
HealthPlus Partners, Inc.	2,661	2,084	78%	1,710	1,427	83%	5
McLaren Health Plan	2,948	2,238	76%	1,664	1,408	85%	9
Midwest Health Plan	2,605	1,881	72%	1,523	1,214	80%	8
Molina Healthcare of Michigan	8,566	6,348	74%	5,571	4,370	78%	4
OmniCare Health Plan	1,774	1,403	79%	1,169	977	84%	4
PHP MM Family Care	733	577	79%	442	376	85%	6
Priority Health Government Programs, Inc.	2,745	2,062	75%	1,615	1,363	84%	9
ProCare Health Plan	35	19	54%	N/A			
Total Health Care	1,832	1,326	72%	1,135	881	78%	5
Upper Peninsula Health Plan	1,053	853	81%	676	599	89%	8
Managed Care Totals/Percent	43,390	31,838	73%	25,475	20,513	81%	7
FFS (Title XIX only)	9,718	6,067	62%	2,766	1,929	70%	7
FFS (Title V/XIX)	1,049	768	73%	961	732	76%	3
FFS Totals (Title XIX & V/XIX)	10,767	6,835	63%	3,727	2,661	71%	8

Total Enrollment

- Based on MMIS eligibility system
- Enrolled in plan (health plan or FFS) for the measurement month

Continuous Enrollment

- Based on MMIS eligibility system
- Enrolled in same plan (health plan or FFS) for the measurement month and 12 months preceding 3rd birthday, with 1-month allowable gap