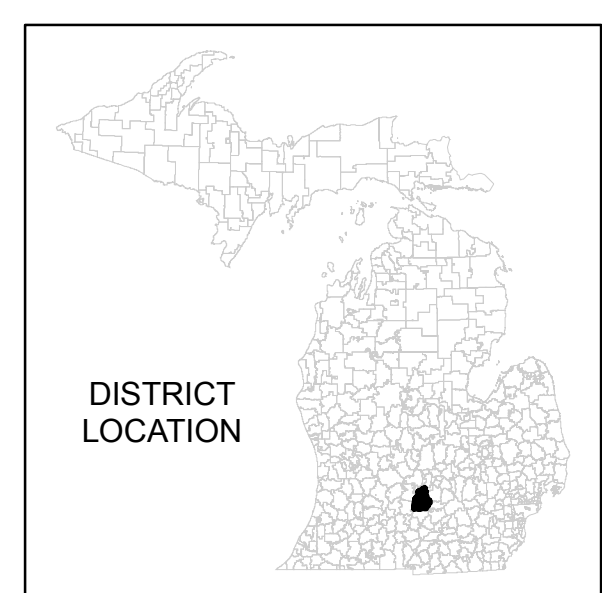
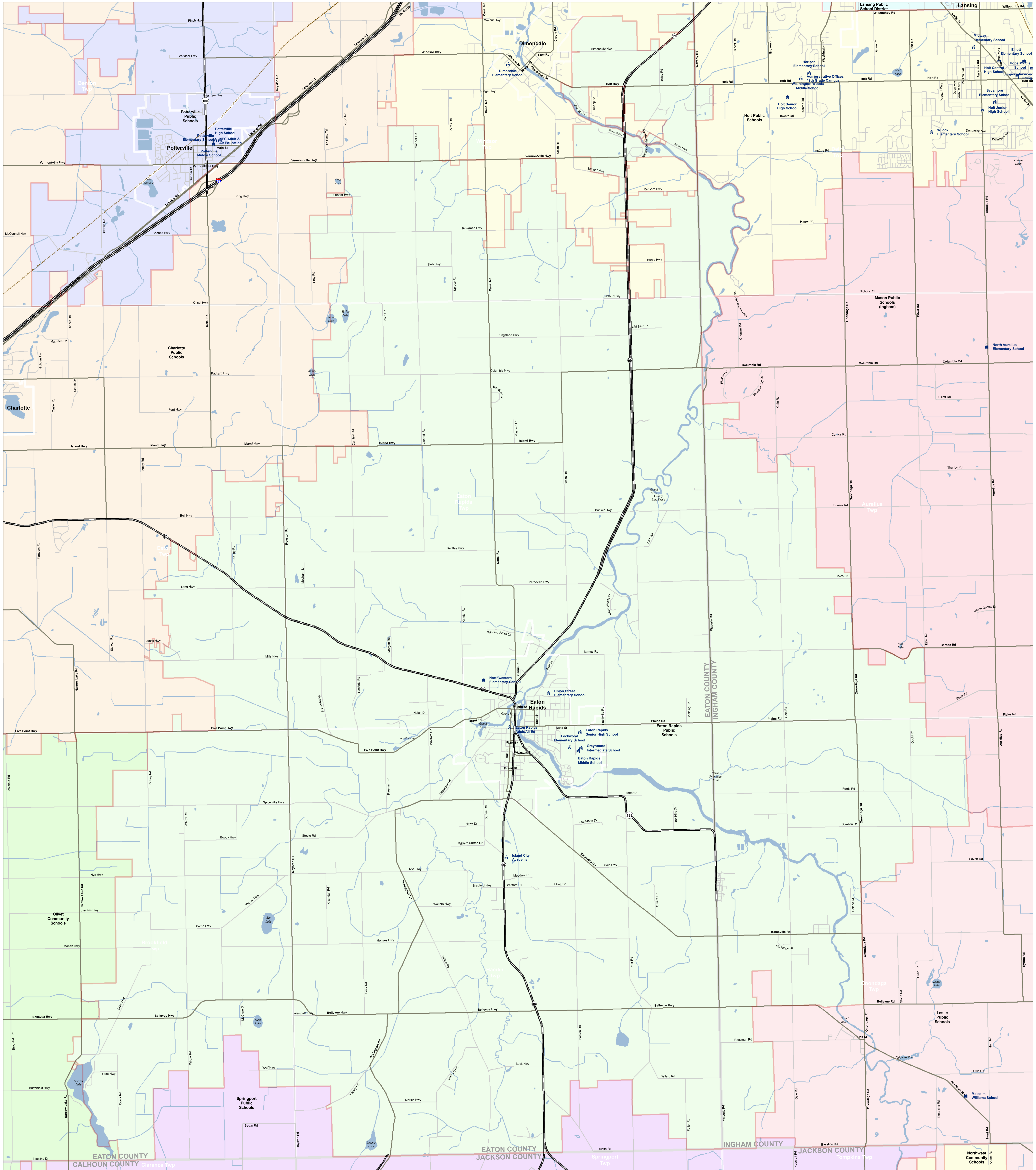


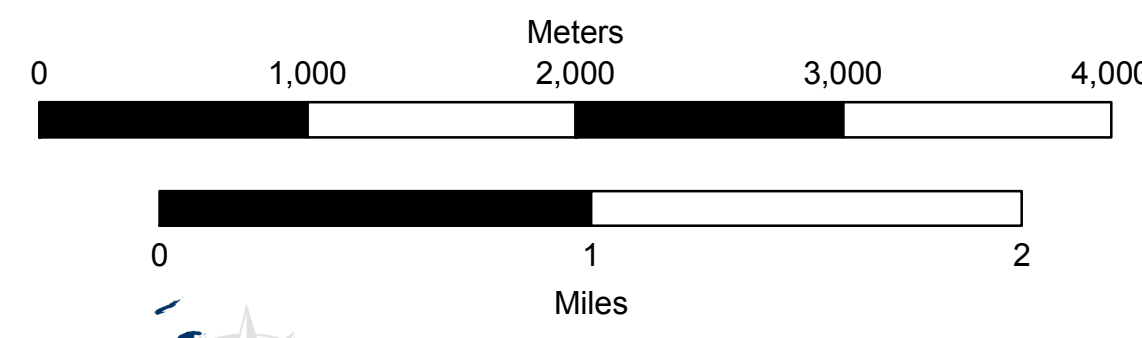
Eaton Rapids Public Schools

Eaton ISD



Information provided is accurate to the best of our knowledge and is subject to change as our data base is updated. While our data base is updated, we do not warrant the information to be authoritative, complete, or free of errors. Information is provided as a service to the public and is not intended to be used for legal or other purposes. The user assumes all liability for any use or damage resulting from the use and application of any of the information on this map.

Please feel free to contact CGI with questions regarding the accuracy of this information. Please note that school district and city/village boundaries are not shown on this map. The official boundaries for school districts and cities/villages are shown on the Michigan Department of Information Technology's Michigan School District Series (Geographic Framework, V7) and the Michigan Department of Information Technology's Michigan City/Village Series (Geographic Framework, V7).



Produced by: J. Shively
Michigan Center for Geographic Information
Department of Information Technology
Completion: March 2008

- SCHOOL
- SCHOOL DISTRICT BOUNDARY
- CITY / VILLAGE
- COUNTY BOUNDARY
- WATER FEATURE
- HIGHWAY
- MAJOR ROAD
- LOCAL ROAD
- RAILROAD

For more information:
Web: www.michigan.gov/cgi
Phone: 517.373.7910