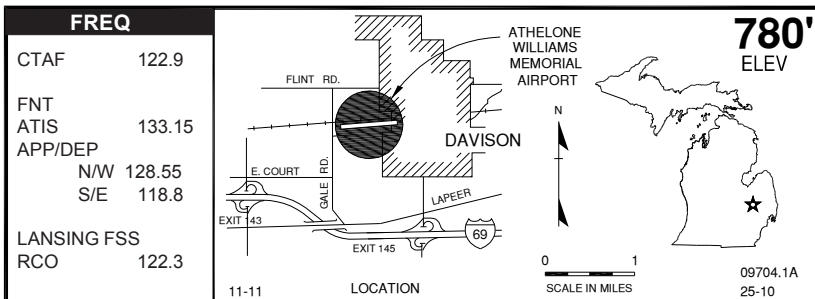
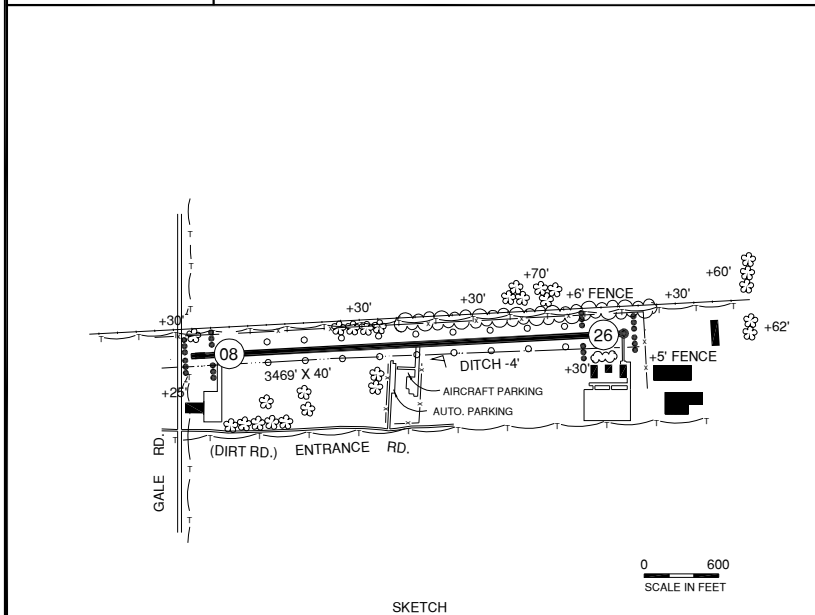


DAVISON, A. WILLIAMS MEM. (6G0)



D



RWY LENGTH BEYOND DISPLACED THR
08/ 3299'
26/ 3101'

COORDINATES
43° 01.75'N
083° 31.78'W

License
Basic Utility

FM CITY: 1.0 mi W
LGT: MIRL (NSTD*) Dusk-Dawn
MGR: Randall Stewart, Twp Admin.
PH: 810-653-4156
810-658-2988 (Mgr Res)
FBO: None
ATND: Unatnd

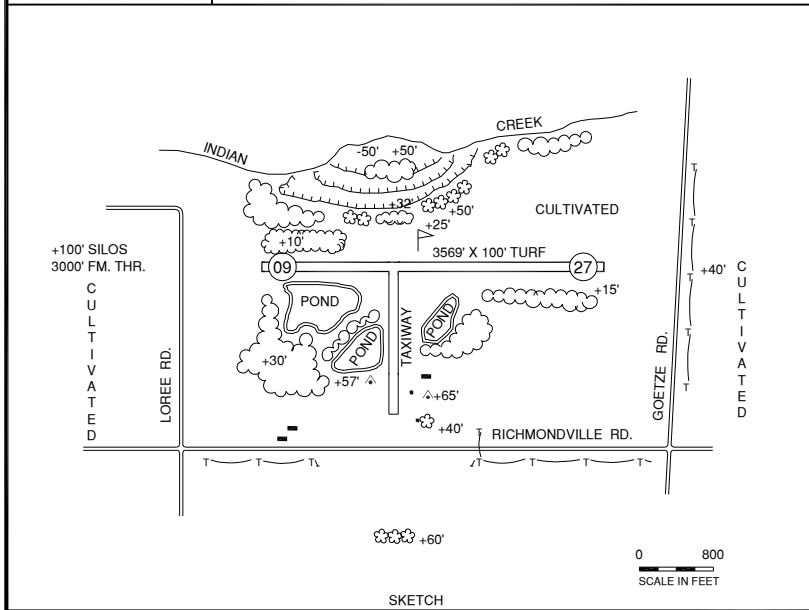
NAV AIDS: IAP, 116.9 (FNT) 075° 10.3 NM to fld.
FUEL: None
RPR: None
WX: None
SNW RMVL: Yes
TRNSP: None
MEALS: In town 1.0 mi
RON: In town 1.0 mi

- Rwy surface poor condition.
- *MIRL lctd nstd 20' fm rwy edge.
- FNT APP / DEP ctl hrs 0545-2330.
- -4 ft drainage ditch 60 ft left and right of rwy centerline along entire length.
- Rwy lgt are turned off at midnight/

DECKERVILLE, INDIAN CK RANCH (56G)

D

FREQ	INDIAN CREEK RANCH AIRPORT	745' ELEV
CTAF 122.9		
	11-11 LOCATION	09710.01A 74-13



RWY LENGTH BEYOND DISPLACED THR

09/ —
27/ —

COORDINATES

43° 34.66'N
082° 38.86'W

License
Basic Utility

FM CITY: 5.0 mi NE

LGT: None

MGR: Tom Rich

PH: 810-376-4846

FBO: None

ATND: Unatnd, Arpt clsd Oct-April

NAV AIDS: 114.0 (ECK) 018° 19.0 NM to fld.

FUEL: None

RPR: None

WX: None

SNW RMVL: No

TRNSP: request

MEALS: None

RON: None

- Deer on & invof arpt.
- Rwy soft in spring.
- Call 810-376-4846 for conditions - before using.
- Rwy N-S txy & 9- 27 surf rough with ireg mowing.

Intentionally left blank

DETROIT, COLEMAN A. YOUNG MUNI (DET)

D

FREQ	
ATIS	124.875
DETROIT	
APP/DEP (R)	126.85
TWR/CTAF	121.3
GND	121.85
LANSING FSS	
RCO	122.2
	122.55
VOT	111.6
UNICOM	122.95

12-11

COLEMAN A. YOUNG AIRPORT

626'
ELEV

0 1 2 3
SCALE IN MILES

09725.A
82-02

SKETCH

0 1200
SCALE IN FEET

RWY LENGTH BEYOND DISPLACED THR
 07/ 2995' * 15/ —
 25/ — * 33/ —

COORDINATES
 42° 24.55'N
 083° 00.59'W

License
 General Utility

FM CITY: 5.0 mi NE
LGT: ROTG BCN, HIRL, VASI, REIL, PAPI.
MGR: Jason Watt
PH: 313-628-2141
FBO: Av Fuel 313-527-6620
ATND: 24 Hrs

NAV AIDS: IAP, 113.8 (YQG) 326° 12.5 NM to fld, ILS, NDB (DE) 338 KHz 149° 6.3 NM to fld.
FUEL: 100LL*, JET A
RPR: Major A&P
WX: ASOS 133.0, 313-371-9696
SNW RMVL: Yes
TRNSP: Taxi, rntl car, bus
MEALS: Near arpt
RON: Near arpt

- FAA Class "D" Airspace.
- Ldg fee for acct over 6,000#.
- Customs avbl (ADCUS).
- Birds on & invof arpt.
- LAHSO; ldg rwy 15 hold-short point 07/25 Measured distance 4900'.
- +275' Unlighted twr 1 mi SW.
- *DET self-fueling, self svc fueling avgas only.
- Txy D-1 clsd indfly.
- Rwy 33 REIL ots indfly.
- HIRL rwy 15/33 step five ots indfly.
- Rwy 15 VASI ots indfly.

DETROIT, COLEMAN A. YOUNG MUNI

FREQ

ATIS	124.875
DETROIT	
APP/DEP (R)	126.85
TWR/CTAF	121.3
GND	121.85
LANSING FSS	
RCO	122.2
	122.55
VOT	111.6
UNICOM	122.95

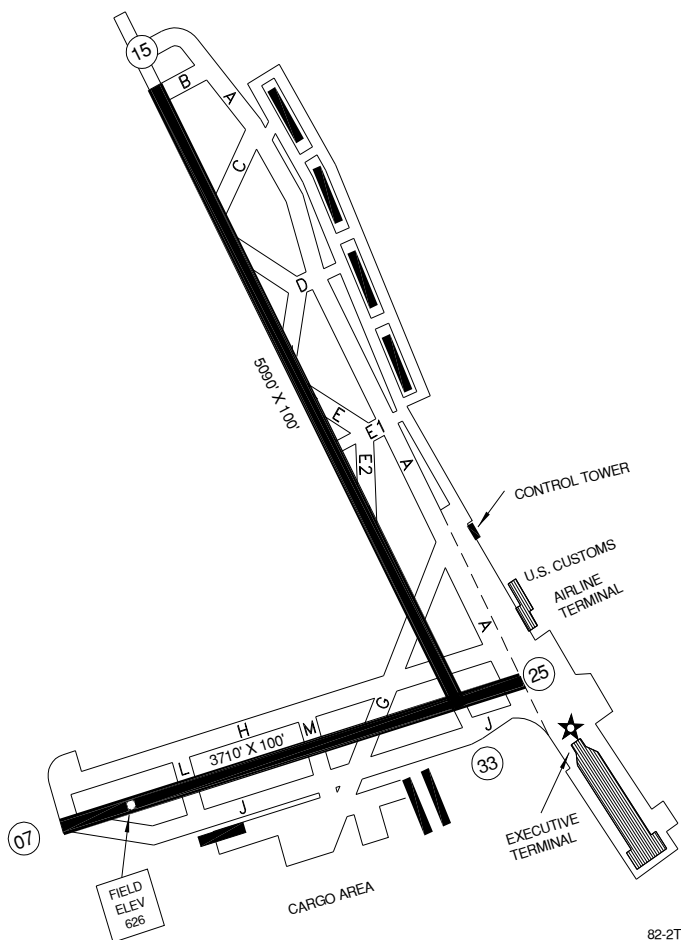
CAUTION: BE ALERT TO RUNWAY CROSSING CLEARANCES.
 READBACK OF ALL RUNWAY HOLDING INSTRUCTIONS IS REQUIRED.

626'

D



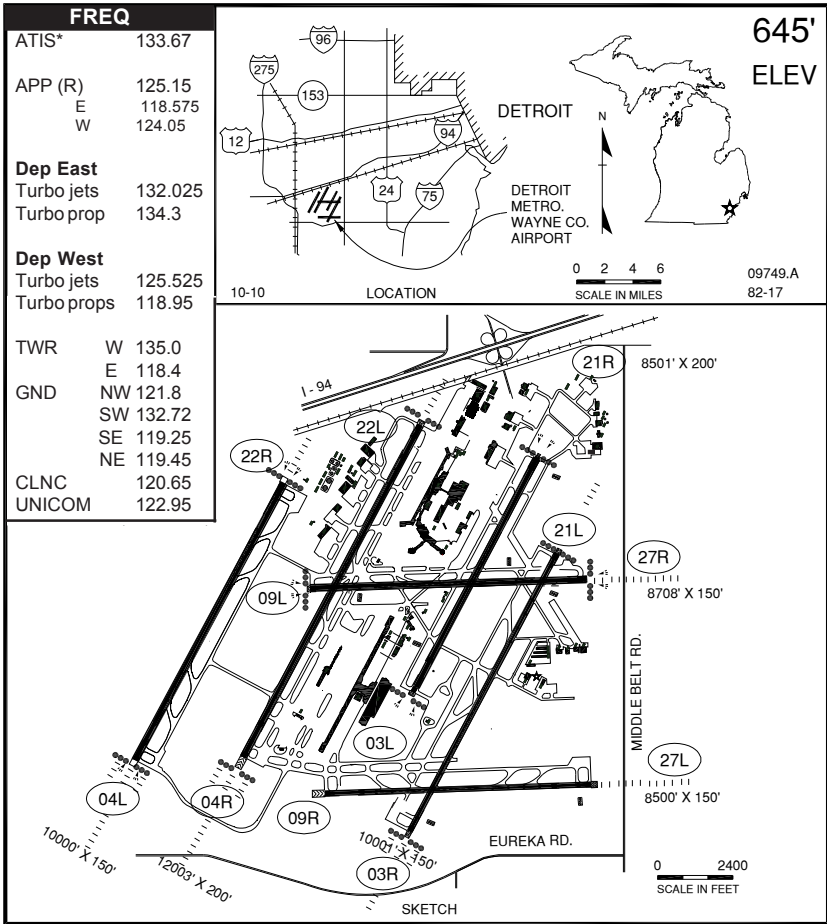
JANUARY 1990
 ANNUAL RATE
 OF CHANGE
 0.1°W



82-2T

DETROIT METRO WAYNE CO. (DTW)

D



RWY LENGTH BEYOND DISPLACED THR
 03L/— * 03R/— * 04L/— * 04R/— * 09R/— * 09L/—
 21R/— * 21L/— * 22R/— * 22L/— * 27L/— * 27R/—

COORDINATES
 42° 12.75'N
 083° 21.20'W

License
 Air Carrier

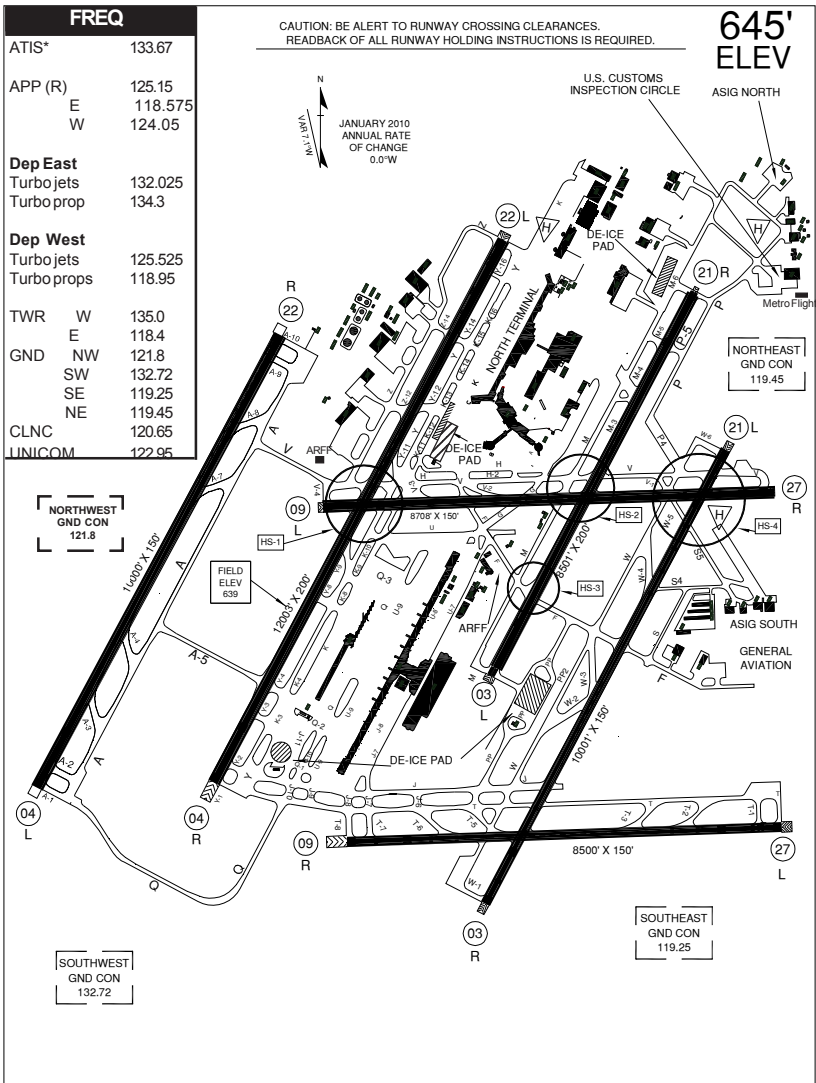
FM CITY: 15.0 mi WSW
LGT: ROTG BCN, HIRL, MALSR, REIL,
 SALRS, ALSF, PAPI, CL, TDZ.
MGR: Tom Naughton
PH: 734-942-3550
 734-942-3685 (Aft hrs)
FBO: ASIG 734-942-3500 (N), 734-941-7880 (S)
 Metro Flight Svc 734-229-9690
ATND: 24 Hrs

NAV AIDS: IAP, 113.4 (DXO) at fld.
FUEL: 100LL, JET A
RPR: Major A&P
WX: ASOS 133.675 734-941-7848, DTN,
 TDWR, LLWAS (CF) HIWAS
SNW RMVL: Yes
TRNSP: Taxi, limo, bus, rntl car (at arpt)
MEALS: At arpt, numerous adj
RON: Numerous adj

- Acft on twy "F" do not block fire station exit.
- FAA Class "B" Airspace.
- *ATIS 734-941-5363.
- Ldg fee.
- U.S. Customs Airport of Entry,
- Birds on & invof arpt.
- Brightly lit parking lot 2.6 NM SW of arpt.

- Rwy 21R dep be alert for "optical illusion", acft taxiing on twy "J" & "T" may appear as crossing rwy 21R cntr line.
- Rwy 22L dep be alert for "optical illusion", acft taxiing on twy "Q" may appear as crossing rwy 22L cntr line.
- Pilots should oper XPDR on taxi.

DETROIT METRO WAYNE CO. TAXIWAY



D

Runway Incursion Hot Spots

HS 1 Occasional use of RWY 9L/27R for taxiing, use caution for intersection of RWY 4R/22L.

HS 2 Occasional use of RWY 9L/27R for taxiing, use caution for intersection of RWY 3L/21R.

HS 3 TXY F and RWY 3L/31R - aircraft taxiing on TXY F must receive clearance to cross RWY 3L/21R.

HS 4 TXY V1, TXY W5, TXY S5 converge w/ rwy 09L- 27R and rwy 03R-21L.

DETROIT, WILLOW RUN (YIP)

D

FREQ	
ASOS	132.350
ATIS*	127.425
DETROIT APP/DEP	118.95
TWR	125.275
GND	121.75
UNICOM	122.95

YPSILANTI

WILLOW RUN AIRPORT

716'
ELEV

01-11

LOCATION

0 1 2 3
SCALE IN MILES

09750.A
82-18

RWY 05R/23L	7526' X 150' (2294m X 49m)
RWY 05L/23R	5995' X 160' (1827m X 49m)
RWY 09/27	7292' X 160' (2223m X 49m)
RWY 14/32	6312' X 160' (1924m X 49m)

SKETCH

RWY LENGTH BEYOND DISPLACED THR
 05L/ — * 05R/ — * 09/6718' *14/ —
 23R/— * 23L/ — * 27/ — *32/5787

COORDINATES
 42° 14.36'N
 083° 31.86'W

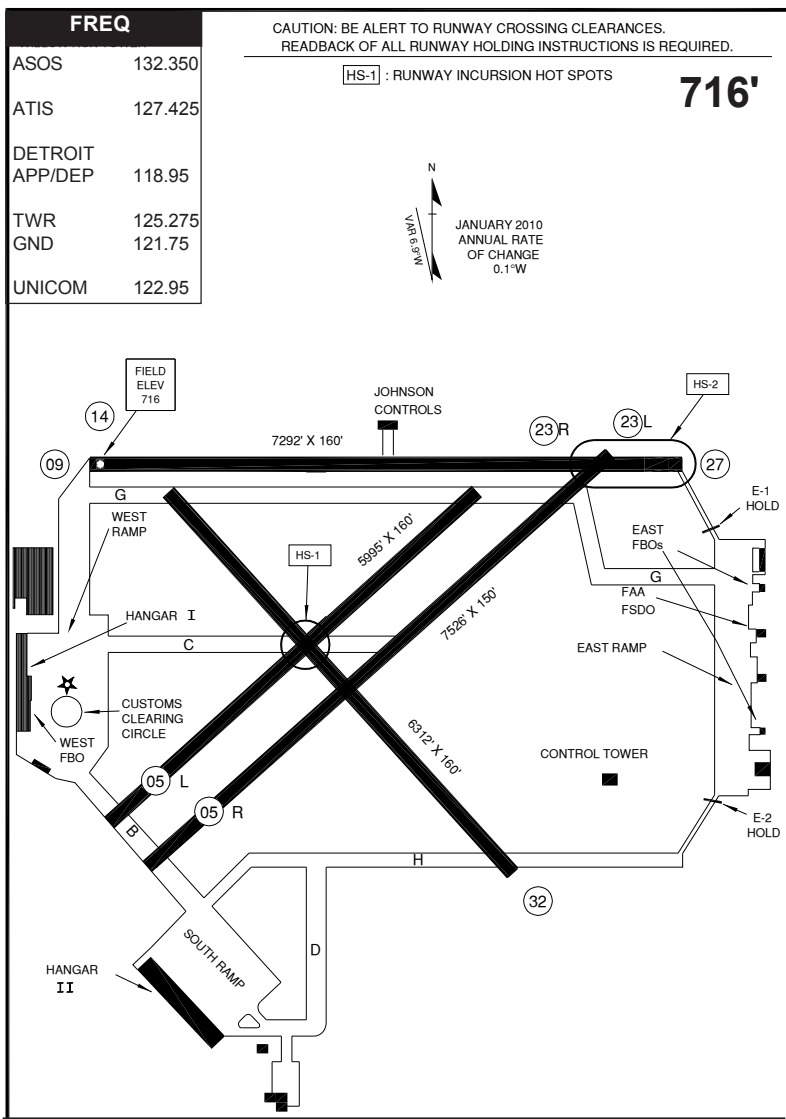
License
 Air Carrier

FM CITY: 3 mi E of Ypsilanti
LG T: ROTG BCN, HIRL, MIRL, MALSR, REIL, VASI, PAPI.
MGR: Tom Naughton
 Sean Brosnan, Mgr
PH: 734-485-6666 (Arprt)
 734-485-6675 (Aft hrs)
FBO: Active Aero Services 734-547-7359
 Avflight West 734-483-3531
 Avflight East 734-482-2621
ATND: 24 Hrs

NAV AIDS: IAP, 113.4 (DXO) 288° 7.5 NM to fld, NDB (YI) 359 KHz 053° 5.6 NM to fld, ILS.
FUEL: 100LL, JET A
RPR: Major A&P
WX: LAWRS, ASOS 734-485-9056
SNW RMVL: Yes
TRNSP: Taxi, Rntl car (on call)
MEALS: In town, 2-3.0 mi
RON: In town, 2-3.0 mi

- FAA Class "D" Airspace.
- *ATIS 734-482-6590.
- Lndg fee for coml opns based on gross weight.
- Deer & birds invof arprt.
- LRA, 1 hr adv notice req 734-942-9000. Pilots ctc customs 313-226-3140. Req customs by FAA flight plan is not accepted.

DETROIT, WILLOW RUN TAXIWAY



Runway Incursion Hot Spots

For information only, not to be construed as ATC instructions.

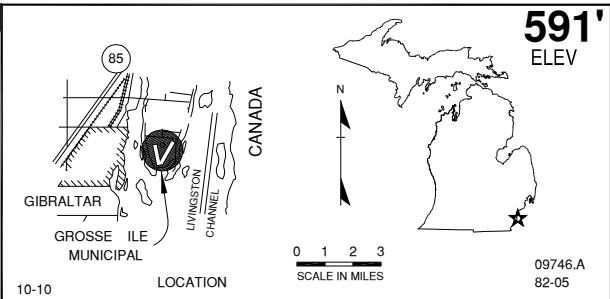
HS 1 Pilots taxiing on TXY C from the west ramp should exercise caution approaching the intersection of RWY 5L-23R, Rwy 14-32, and TXY C. The intersection is unusually large and complex. Low visibility conditions contribute to direction disorientation.

HS 2 Pilots instructed to taxi on TXY E1, connecting to RWY 27-9, connecting to RWY 23L-5R, should be careful. Pilots often mistake runway markings beginning with the same number. This applies to taxi and airborne phases of flight. Wrong rwy departure risk.

DETROIT, GROSSE ILE MUNI (ONZ)

D

FREQ	
AWOS	119.675
CTAF/U	123.0
DETROIT APP/DEP (R)	134.3
GCO	121.725

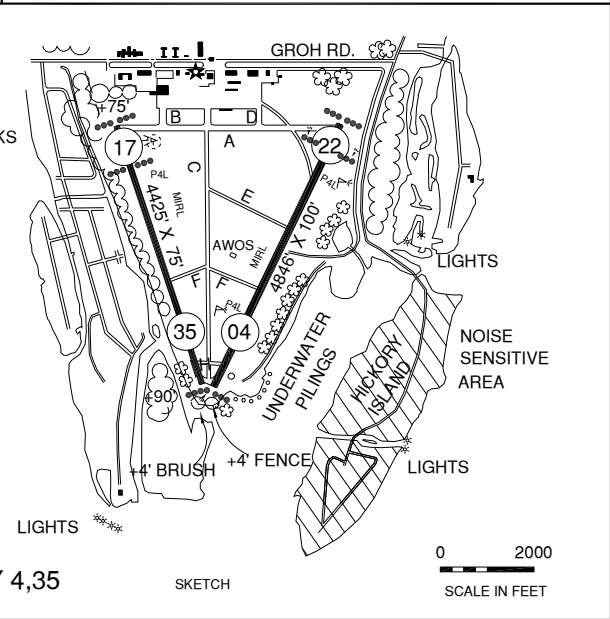


RWY 04/22 4846' X 100'
(1477m X 30m)

RWY 17/35 4425' X 75'
(1349m X 23m)

565'
SMOKE STACKS
@ 7,000' NW

RGT TFC RWY 4,35



RWY LENGTH BEYOND DISPLACED THR
04/ — * 17/ 3752'
22/ 4418' * 35/ —

COORDINATES
42° 05.94'N
083° 09.69'W

License
General Utility

FM CITY: 2.0 S
LGT: ROTG BCN. MIRL. INTSTY & MIRL
CTL AFT dusk, PAPI, REIL-STD PCL
CTAF.

NAV AIDS: IAP, 115.7 (CRL) 080° 13.6 NM to fld, NDB (RYS) 419 KHz at fld.

MGR: Derek Thiel
Barry Sedlock, Asst

PH: 734-675-0155

FBO: Millennium Flight 734-692-6424

ATND: Mon-Fri 0800-1800
Sat-Sun 0800-1700

FUEL: 100LL, JET A, *

RPR: Major A&P

WX: AWOS 734-692-9686, WSI

SNW RMVL: Yes

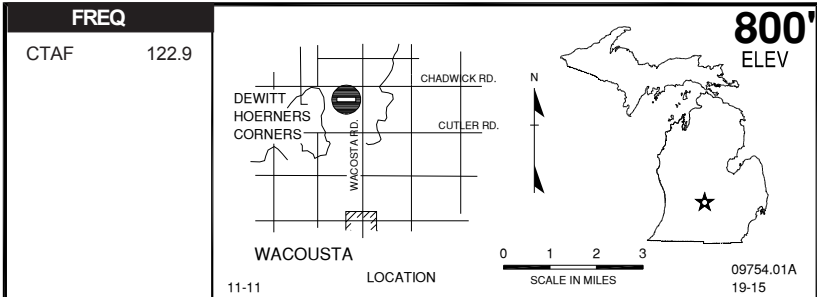
TRNSP: Taxi, Rntl car, CC

MEALS: On fld, 0.25 mi

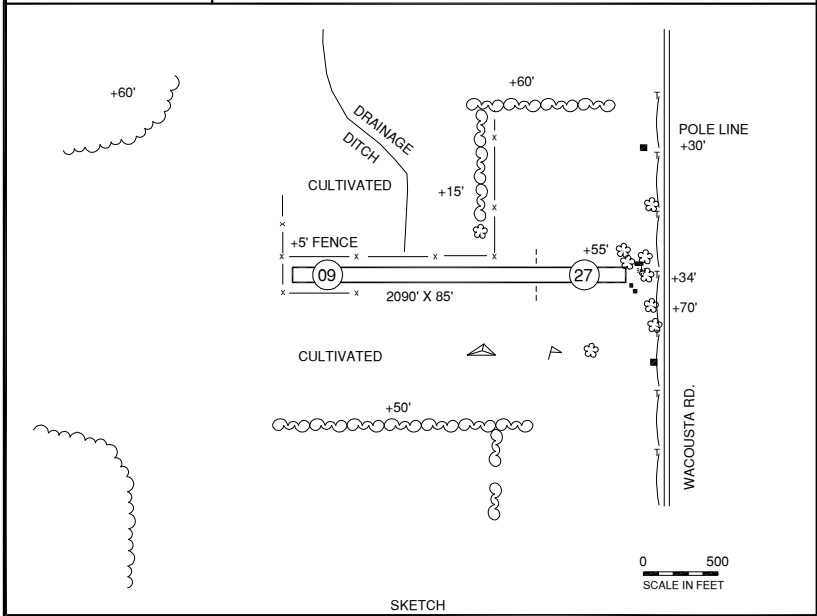
RON: At arpt, 1.0 mi

- Rgt tfc Rwy 04 & 35.
- Pilot Lounge access — depress V, then simultaneous III-II, then I.
- *Fuel 24 hr self serve, full svc avbl during FBO hrs.
- Birds & deer on & invof arpt.
- Line/fuel svc @ hangar 2 (middle of the ramp)
- Avoid overflight of Hickory Isl.

DEWITT, HOERNER'S CORNERS (MI10)



D



RWY LENGTH BEYOND DISPLACED THR

09/ —
27/ 1590'

COORDINATES

42° 51.95'N
084° 42.34'W

License
Basic Utility

FM CITY: 7.0 mi WNW

LGT: LIRL not for public use.

MGR: Harold Hoerner

PH: 517-626-6553

FBO: None

ATND: Intmt (Owner resides at arpt)

NAV AIDS: 110.8 (LAN) 360° 8.0 NM to fld.

FUEL: None

RPR: None

WX: None

SNW RMVL: Intmt, vfy cond

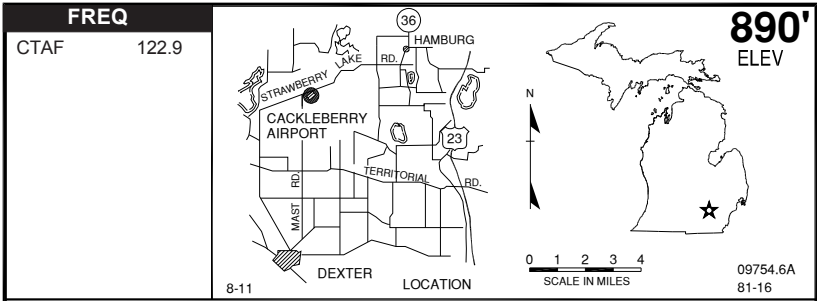
TRNSP: None

MEALS: None

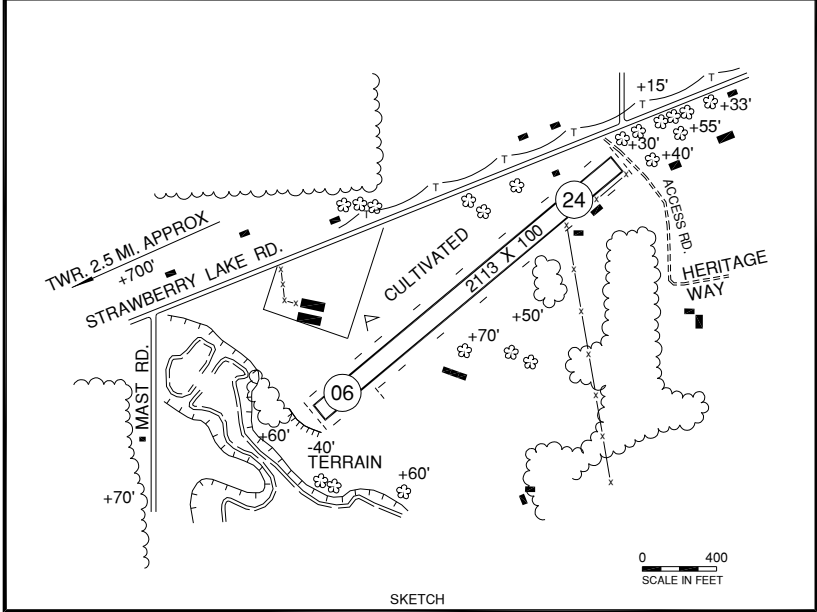
RON: None

- Rwy Soft in spring.
- 5' fence & posts 10' L&R of rwy. Call for rwy conditions.

DEXTER, CACKLEBERRY (2E8)



D



RWY LENGTH BEYOND DISPLACED THR
 06/ 1798'
 24/ 1613'

COORDINATES
 42° 25.50' N
 083° 52.16' W

License
 Basic Utility

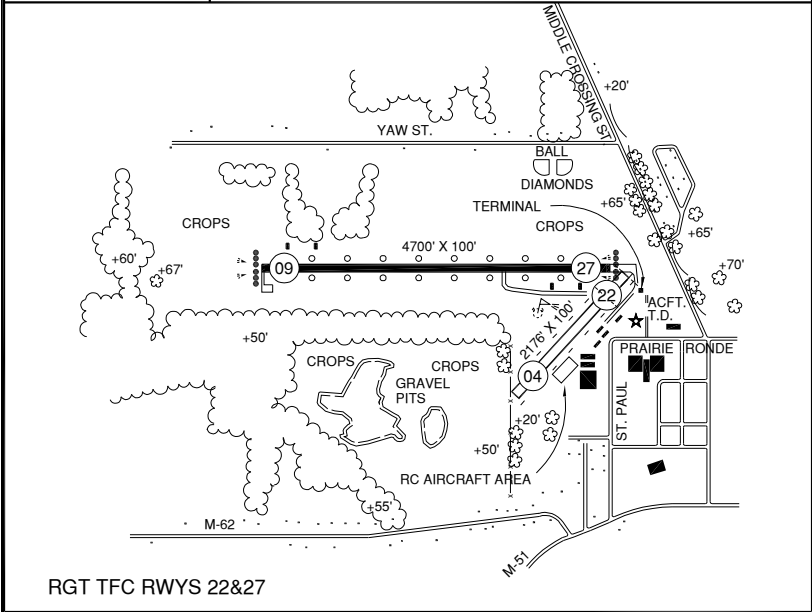
FM CITY: 5.0 NW
LGT: NSTD LIRL not for public use.
MGR: John Wiltse
PH: 734-426-4493
FBO: None
ATND: ireg

NAV AIDS: 114.3 (SVM) 277° 12.0 NM to fld.
FUEL: None
RPR: None
WX: None
SNW RMVL: Limited- vfy cond
TRNSP: None
MEALS: In town, 5.0 mi
RON: Ann Arbor, 8.0 mi

DOWAGIAC MUNICIPAL (C91)

D

FREQ	747' ELEV
CTAF/U 122.8	
SOUTH BEND APP/DEP (R) 118.55	
07-11	09764.A 14-01



RWY LENGTH BEYOND DISPLACED THR
 04/ — * 09/ —
 22/1786' * 27/ —

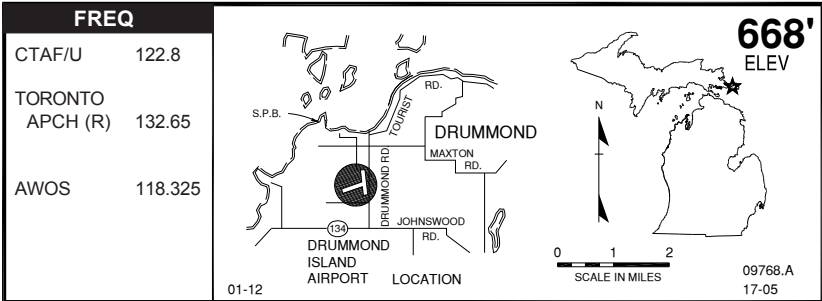
COORDINATES
 41° 59.58'N
 086° 07.70'W
License
 General Utility

FM CITY: 1.0 mi NW
LGT: ROTG BCN. MIRL, PAPI, REIL—STD
 PCL CTAF.
MGR: Gary Carlile
PH: 269-782-3574
 269-782-4936 (Unatnd)
FBO: None
ATND: Unatnd

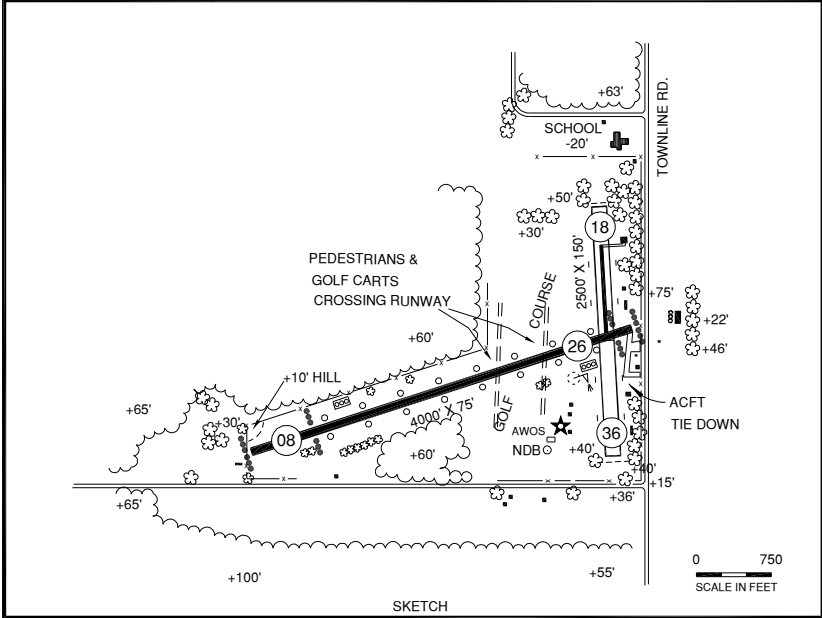
NAV AIDS: IAP, 116.6 (ELX) 182° 9.1 NM to fld.
FUEL: 100LL*
RPR: None
WX: None
SNW RMVL: Rwy 09/27
TRNSP: Dial-A-Ride 269-782-3300
 Mon-Fri 0800- 1700
MEALS: In town, 0.25 mi
RON: 1.0 mi

- Rgt tfc rwys 22, 27.
- TPA 1548 (800).
- RC acct opr E side of rwy 04/22.
- Ultralight & acct with no radios using fld.
- Deer on & invof arpt.
- *24 hr self-serve fuel.
- Admin bldg access - depress V, then simultaneous III-II, then I.

DRUMMOND ISLAND (DRM)



D



RWY LENGTH BEYOND DISPLACED THR

08/ 3350' * 18/ —
26/ 3830' * 36/ —

COORDINATES

46° 00.56'N
083° 44.64'W

License
General Utility

FM CITY: 0.5 mi S

LGT: ROTG BCN. MIRL, PAPI— key mike 5X CTAF.

MGR: James Bailey

PH: 906-493-5411
906-493-5339 (Mgr Res)

FBO: Bailey Svcs 906-493-5411

ATND: Mon-Sat 0800-1700

NAV AIDS: IAP, 112.2 (SSM) 139° 33.9 NM to fld,

FUEL: MOGAS, 100LL, JET A-55MB

RPR: Major

WX: NWS SSM, SAWRS, AWOS 906-493-6410, internet access

SNW RMVL: Rwy 08/26

TRNSP: Rntl car

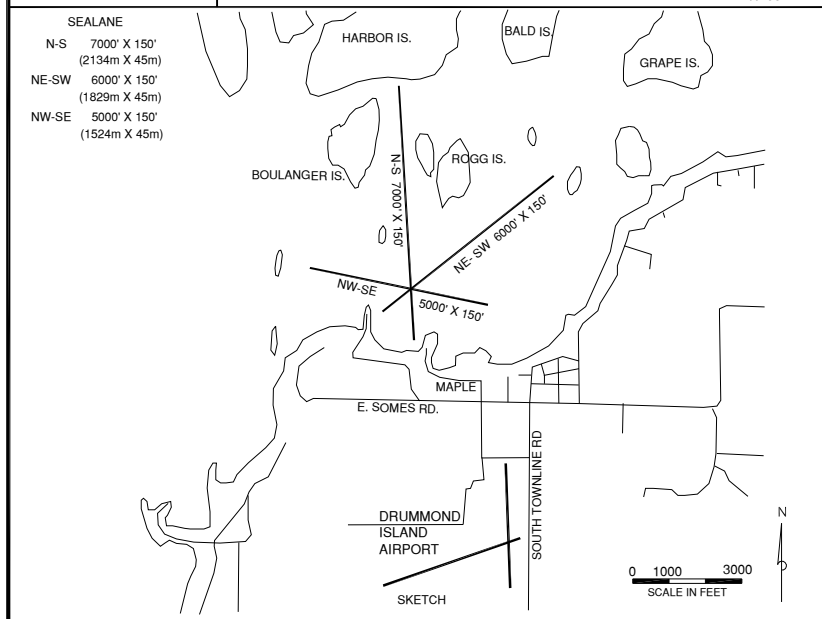
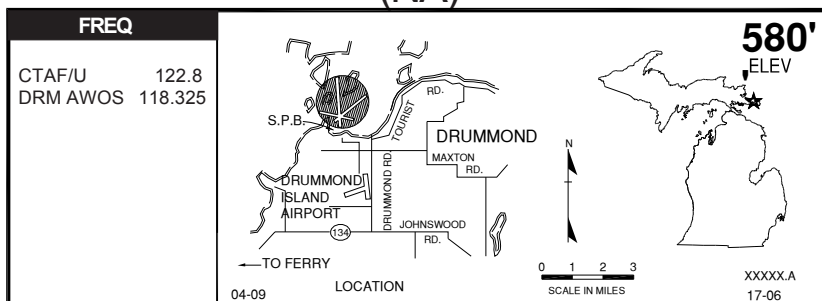
MEALS: In town

RON: In town, CC

- Customs avbl (ADCUS)— for details see Customs info. Prior notice call 906-632-7221.
- Birds on & invof arpt.
- Golf course adj to rwys with golf carts & pedestrians crossing.
- Camping / cooking permitted.
- Drummond Isl Yach Haven S.P.B. 1.5 mi N.

DRUMMOND ISLAND, YACHT HAVEN SPB (NA)

D



SEALANES
N-S 7000 x 500 * E-W 5000 x 150
NE-SW 6000 x 150

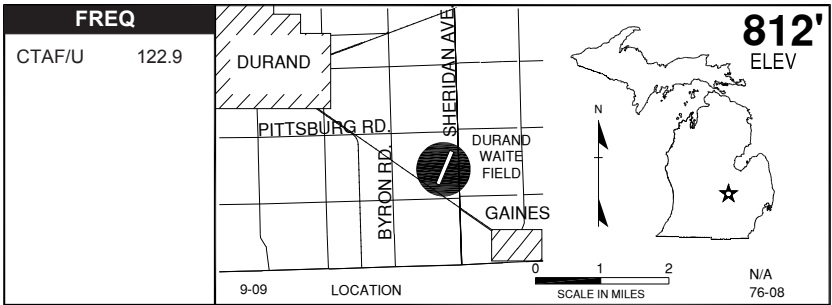
COORDINATES
46° 01.49'N
083° 45.15'W

FM CITY: 0.5 mi E
LGT: None
MGR: Dennis Bailey
PH: 906-493-5232
FBO: Yacht Haven
ATND: May-Nov 0800-1800

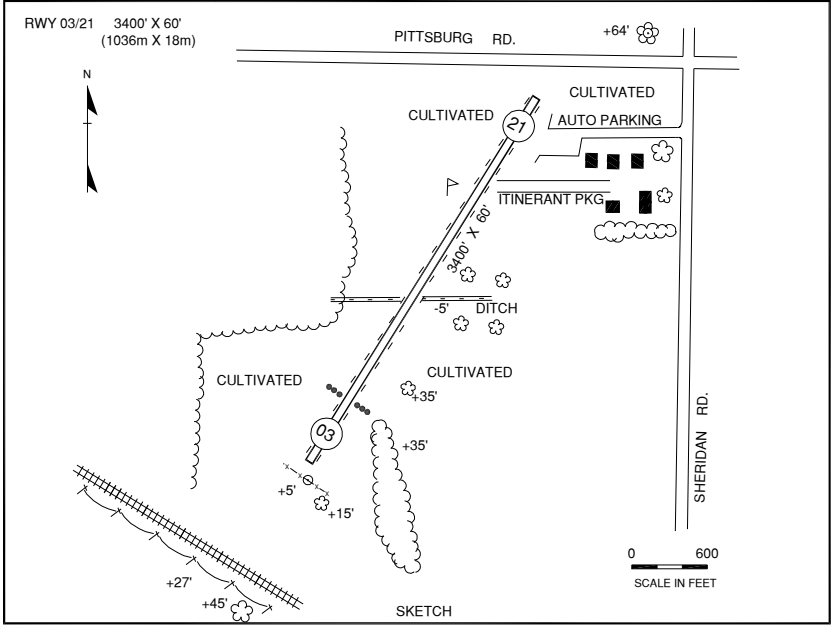
NAV AIDS: 112.2 (SSM) 139° 33.4 NM to fld,
FUEL: MOGAS
RPR: None
WX: NWS SSM, AWOS 906-493-6410 @ DRM
SNW RMVL: None
TRNSP: Rntl car, bicycles
MEALS: In town
RON: In town, adj

- Customs avbl (ADCUS). For customs clearance, prior notice required 906-632-7221.
- Pilots must request services at least 1 hr in adv Customs & Border Protection (CBP) Int'L Bridge Plaza S.S. Marie, MI 906-632-8822, 906-632-7221, 906-632-2631.
- Hrs of CBP svc, June mid Sept. 1200-2000 7 days, otr times reduced services.
- Requesting CBP svc before June 15 and after Sept 15 call 906-632-7221
- User fee (decals) required-\$27.50 (USD only).
- Drummond Island Airport (DRM) located 1.5 mi S of SPB.

DURAND, WAITE FIELD (N/A)



D



RWY LENGTH BEYOND DISPLACED THR
03/ 2800'
21/ —

COORDINATES
42° 53.44' N
83° 55.92' W

License
Basic Utility

FM CITY: 2.8 mi SE
LGT: None
MGR: L. A. Waite
PH: 989-288-3156 (Mgr Res)
FBO: None
ATND: Ireg

NAV AIDS: 116.9 (FNT) 242° 10.9 NM to fld,
NDB (DRM) 218 KHz at fld.
FUEL: None
RPR: None
WX: None
SNW RMVL: None
TRNSP: None
MEALS: In town
RON: In town

- Rwy soft when wet.
- Rwy rough with sloping terrain.
- Deer on and invof arpt.