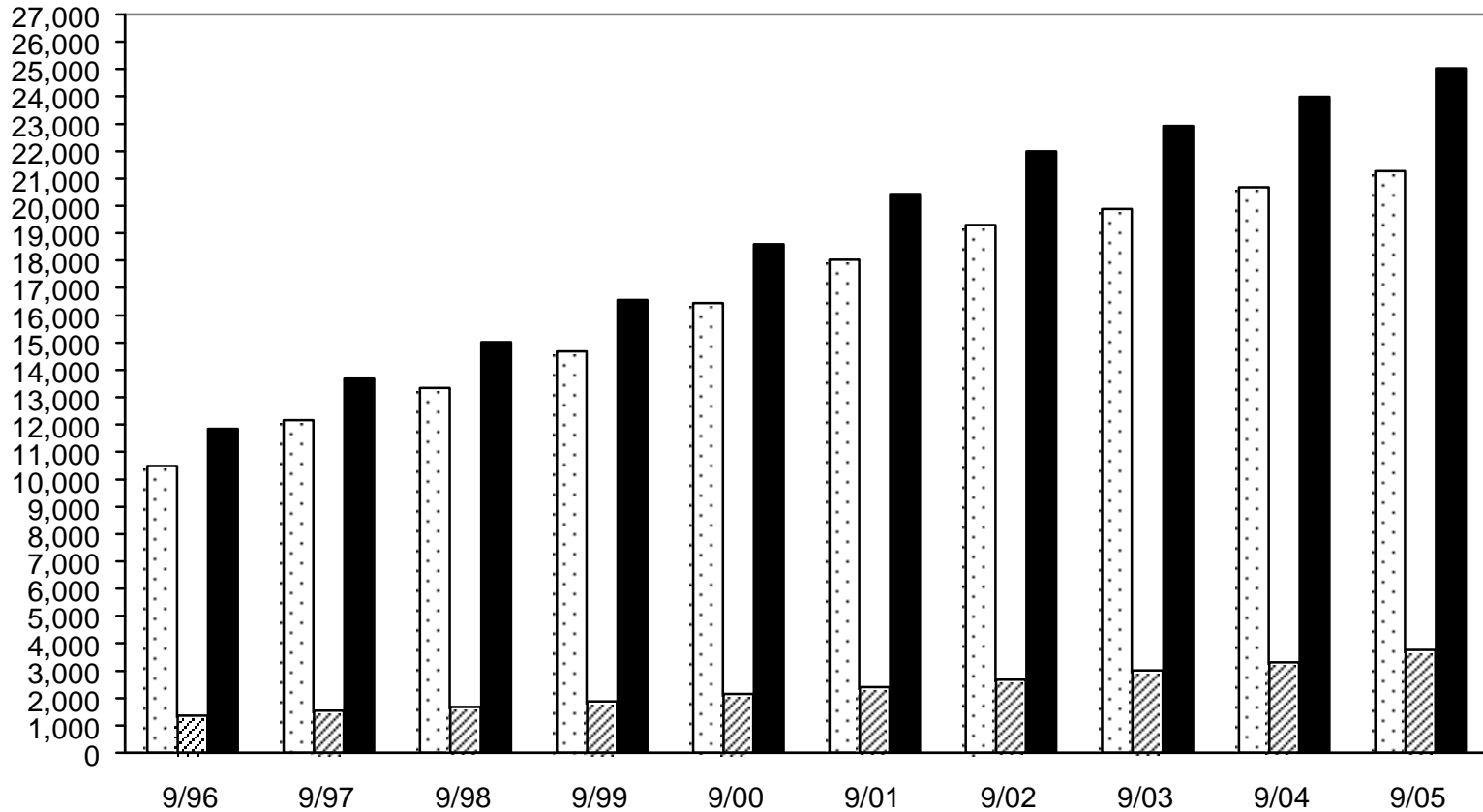


ADOPTION SUBSIDY CASES

Point-In-Time Data: 1996 - 2005

Number of Cases



□ Federal	10,494	12,156	13,333	14,681	16,449	18,031	19,303	19,896	20,671	21,262
▨ State	1,359	1,534	1,679	1,873	2,146	2,401	2,681	3,019	3,313	3,767
■ Total	11,853	13,690	15,012	16,554	18,595	20,432	21,984	22,915	23,984	25,029

- The number of Adoption Subsidy cases increased by 111% from 9/96 to 9/05. Most of the caseload growth has been in the Federal Subsidy program. Beginning in FY 1998, state funded subsidy cases are funded by TANF funds and/or state funds.