

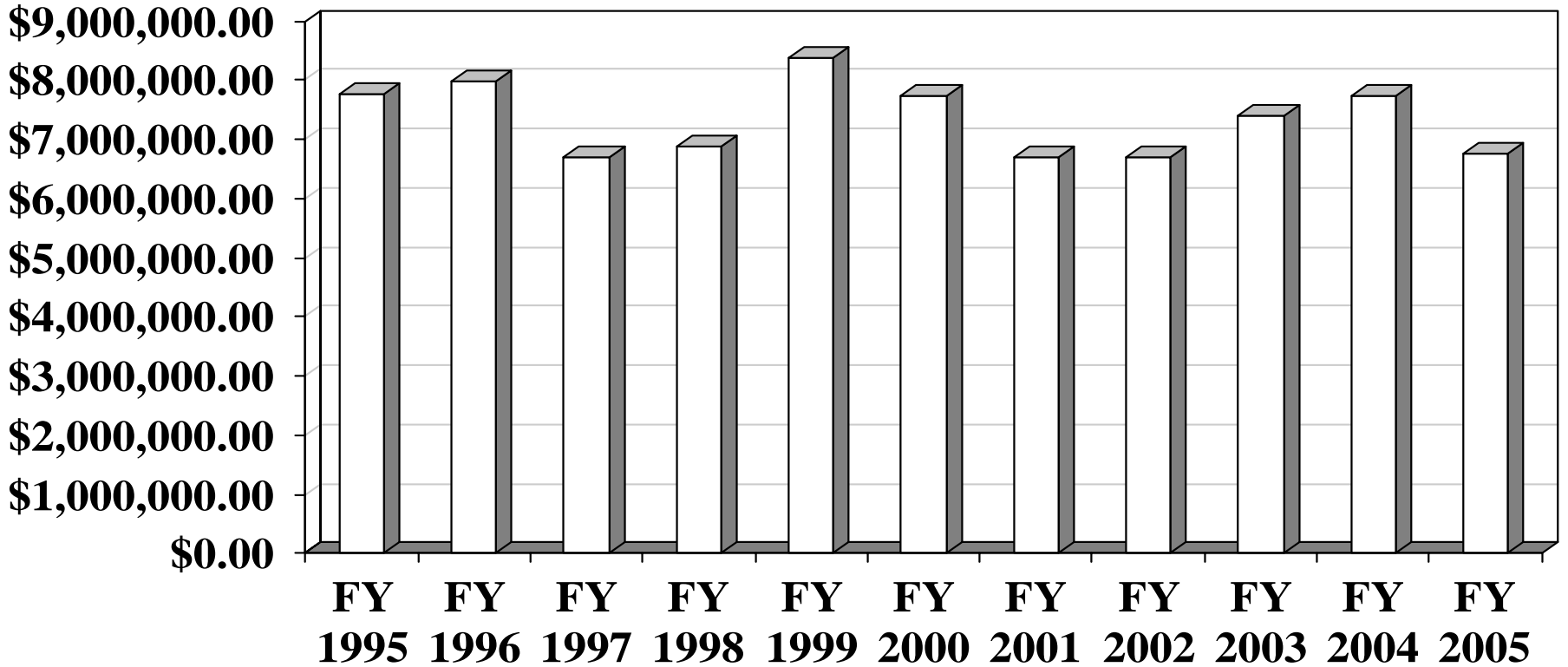
**Providing the highest quality integrated
transportation services for economic
benefit and improved quality of life**

- **Understanding and meeting needs**
- **Partnering with others**
- **Continually getting better**
- **Effective, efficient and outstanding workforce**

- **Assists in reducing unemployment and outmigration**
- **Provides the backbone for economic activity**
- **Supports international trade**

- **Maintaining the Aviation Infrastructure**
 - **Preserve, enhance and expand**
- **Federal Aviation Reauthorization**
 - **Vision 100 expires in 2007**
- **State Funding**
 - **ASAP Bonds**
 - **Long Term Revenue Solution**

Aviation Fuel Tax Revenue



- **Long term capital match strategy**
 - **Match for federal transit grants**
 - **Toll Credits**
 - **Balancing demands on the CTF**
- **Funding strategy for New Starts**
 - **SAFETEA-LU earmarks for new regional/rapid transit services**
 - **Need a combined state/local response for match and operating**

- **SAFTEA-LU implementation**
 - **Two new federal programs to be implemented by State DOTs**
 - **Access federal funds for transit staff**

- **Highway Safety**
 - **Reduce fatalities on Michigan highways to 1.0 per 100 million vehicle miles traveled by 2008**
 - **Continued focus in ITS**
- **Asset Management**
- **Pavement and bridge goals**
 - **Maintain 95% good freeway/
85% good non-freeway**

- **Operations and Maintenance will continue to be an important function**
 - CPM
 - Drainage
 - Damage to bridges from high load hits
- **Limited funding**
 - Percent of the pump price that pays roads is eroding
 - SAFTEA-LU created two new commissions

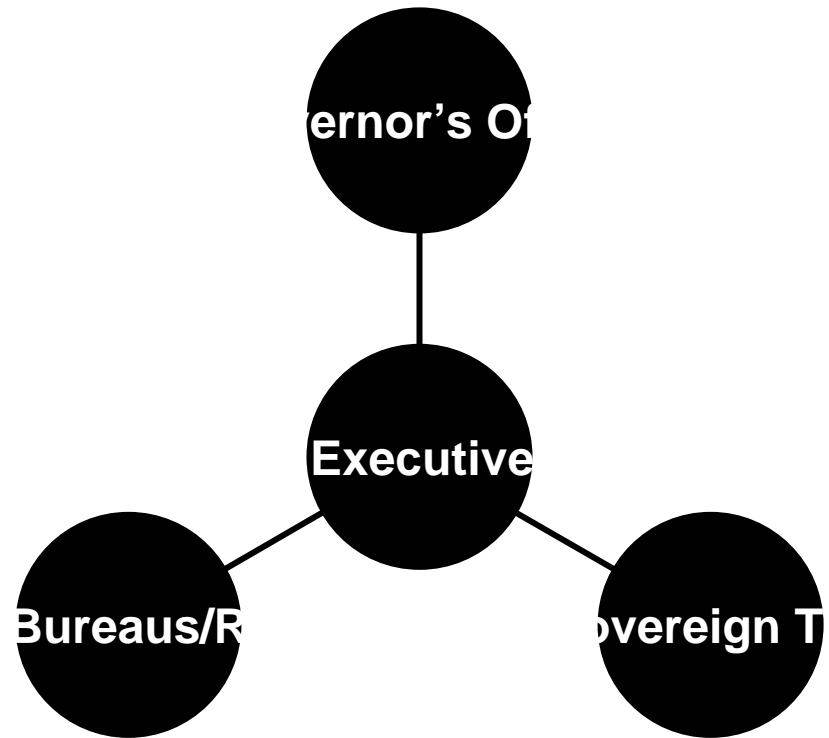
- **Public-Private Partnerships**
 - Means to supplement traditional transportation revenue
- **Economy**
 - **Jobs Today, Jobs Tomorrow**
 - \$618M/over 11,000 jobs
 - **Local Jobs Today**
 - \$400M/more than 7,000 jobs

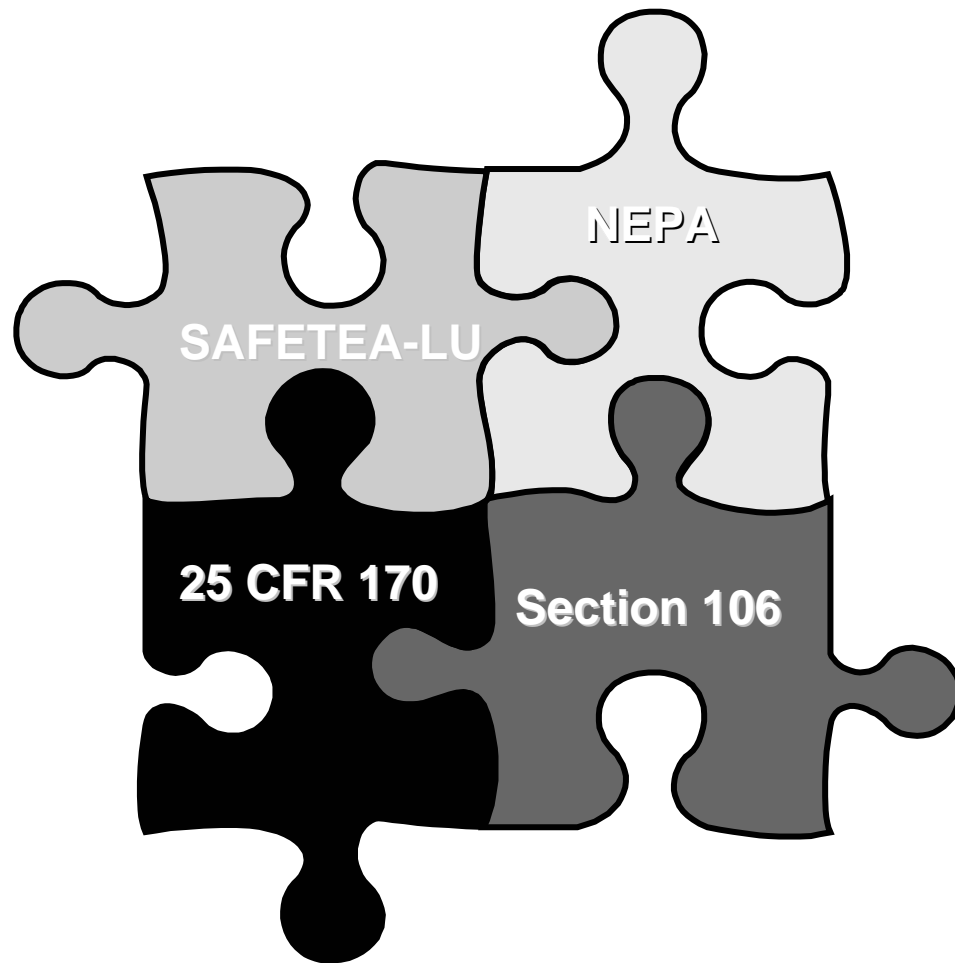
- **Preserve and Increase Funding**
 - **State-owned rail lines for eventual divestiture**
 - **Michigan Rail Loan Assistance Program**

- **Expand grade crossing safety programs**
- **Congestion Mitigation / Safety Enhancements**

- **Preserve Rail Service**
 - **Adequately fund state subsidy for Pere Marquette and Bluewater lines**
 - **Expand Amtrak's higher-speed territory**

- **Marine Passenger**
 - **Detroit Passenger Terminal and Dock**
- **Bike/Pedestrian**
 - **Provide an interconnected nonmotorized system**
 - **Safety**
- **Coordinating investment**
- **Public-Private Partnerships**
 - **Means to supplement traditional transportation revenue**





NEPA

SAFETEA-LU

25 CFR 170

Section 106

Odawa Circle
Little Traverse

- **SAFETEA-LU National IRR Budget 2005-2009:**
 - 2005 - \$300m
 - 2006 - \$330m
 - 2007 - \$370m
 - 2008 - \$410m
 - 2009 - \$450m

- **2004 - \$2,195,624**
- **2005 - \$2,838,864**
- **IRR Budget Distribution Formula (25 CFR Part 170):**
 - **50% - Cost to Construct**
 - **30% - Vehicle Miles Traveled (IRR Inventory)**
 - **20% - Population Data**

- **Memorandum of Agreements**
 - **MDOT-Tribal Project Accords**
- **State Long Range Transportation Plan**
- **State-Tribe Transportation Planning**
- **Scenic Byways Program**
- **Government-to-Government Consultations**
- **Michigan Tribes IRR Funding Share**
- **MDOT Policy on Tribal Affairs**
- **State-Tribe Transportation Conferences**