

MACKINAC ISLAND (MCD)

FREQ	
AWOS	118.275
CTAF/U	122.7
RCO	122.35
PCL	122.8
Minn CTR	134.6

LEFT TRAFFIC PATTERN 1900 MSL

12-11 LOCATION

741'
ELEV

10037.A
49-06

SCALE IN MILES

Mackinac Isl road map next pg

SKETCH

SCALE IN FEET

M

RWY LENGTH BEYOND DISPLACED THR

08/ —
26/ —

COORDINATES

45° 51.89'N
084° 38.22'W

License

General Utility

FM CITY: 2.0 mi NW

LGT: ROTG BCN. MIRL, PAPI, REILS—STD
PCL 122.8.

MGR: Dan Cook

Dennis A. Bradley, Asst

PH: 906-847-3231

FBO: None

ATND: Nov-Dec 0800-1700

RDO NAV AIDS: IAP, 111.8 (PLN) 011° 14.1
NM to fld.

FUEL: None

RPR: None

WX: AWOS 906-847-3778, HIWAS,
WX briefing system

SNW RMVL: Yes

TRNSP: Taxi (horse carriage)

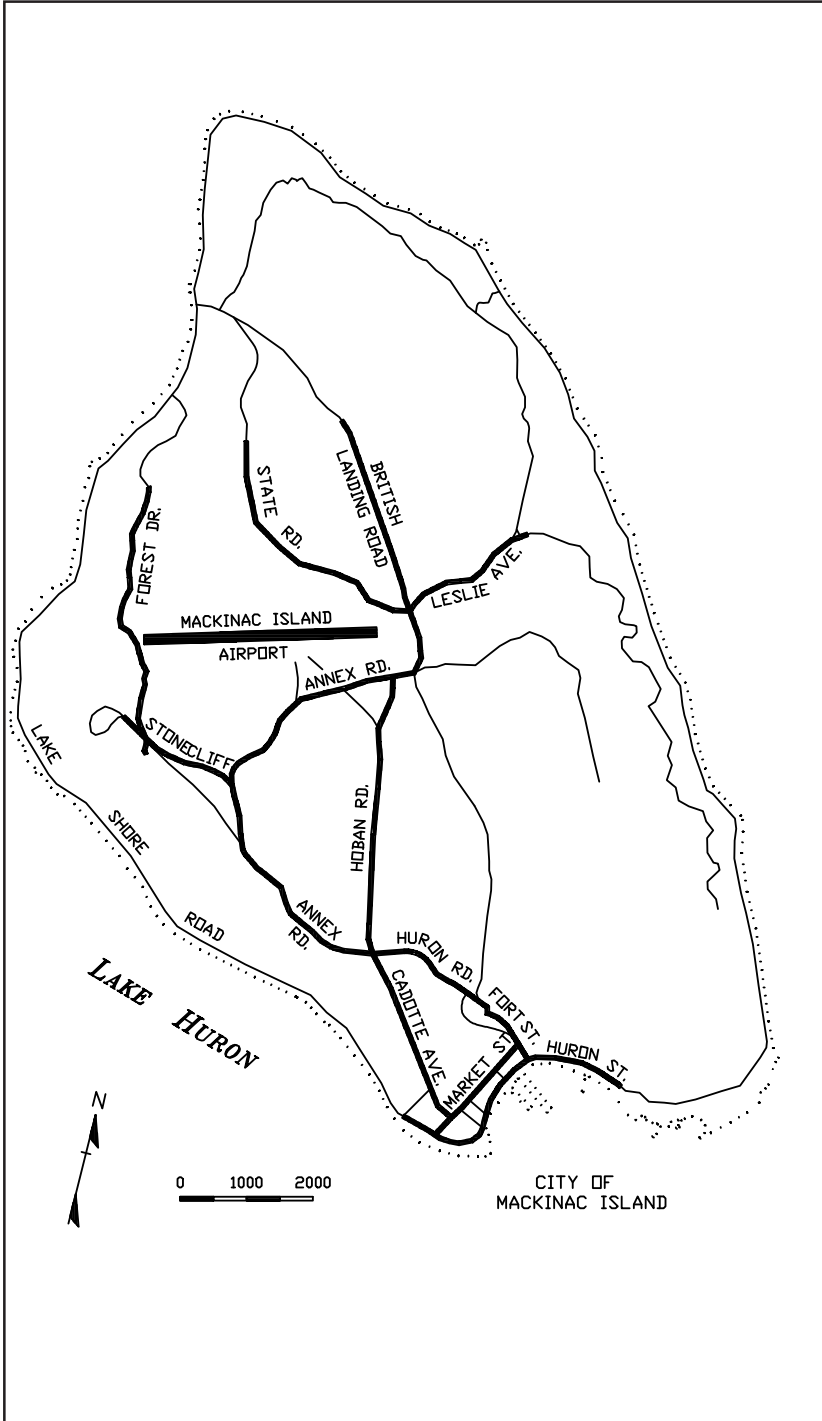
MEALS: In town, 2.0 mi

RON: In town, 2.0 mi

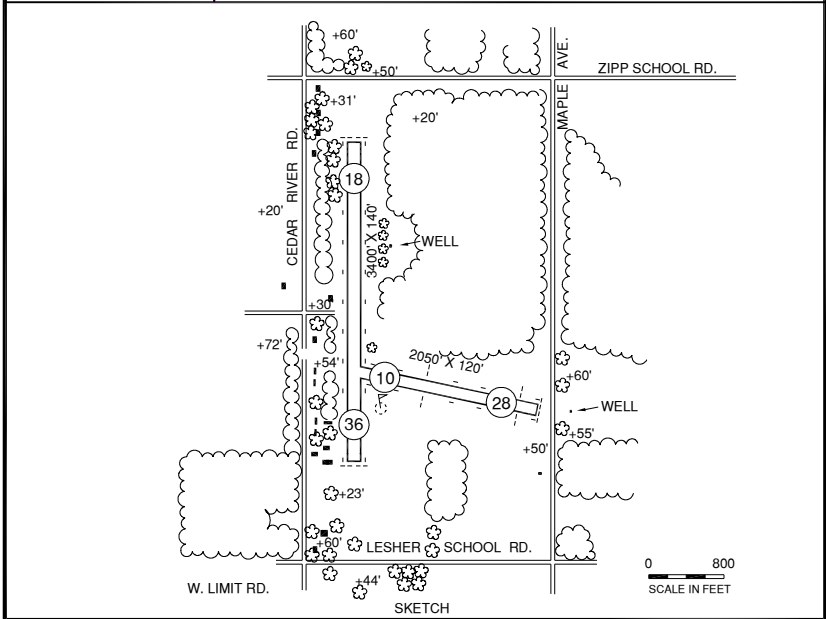
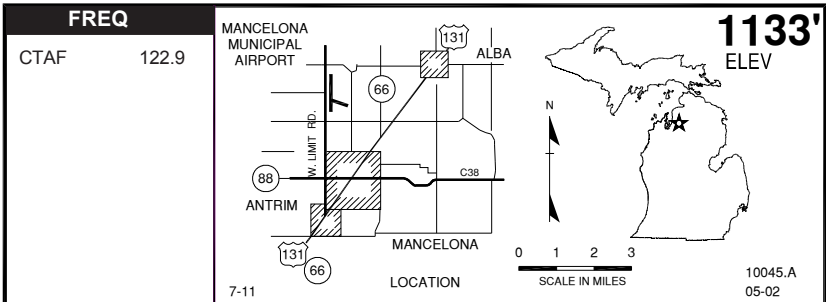
- TPA 1900' MSL (1160' AGL) .
- Noise abatement proc—climb to TPA (1900' MSL) before turn, avoid flight over shore & town.
- T&G operations prohibited.
- Lndg fee.
- Admin bldg access—depress V, then simultaneous III-II, then I.
- Birds on & invof aprt. Flocks of seagulls invof landfill 0.3 mi NE.
- No camping allowed.

MACKINAC ISLAND ROAD & TRAILS

M



MANCELONA MUNICIPAL (D90)



RWY LENGTH BEYOND DISPLACED THR

10/ 1220' * 18/ —
28/ 1850' * 36/ —

COORDINATES

44° 55.50'N
085° 04.00'W

License
Basic Utility

FM CITY: 2.0 mi N

LGT: None

MGR: Roger C. Anger

PH: 231-587-5171 x14
906-484-1202 (Cell)
231-587-8433 (Mgr Res)

FBO: None

ATND: Unatnd—CLSD Nov -Apr 15 & when
snow covered

RDO NAV AIDS: 109.2 (GLR) 254° 16.0 NM to
fid.

FUEL: None

RPR: None

WX: None

SNW RMVL: No

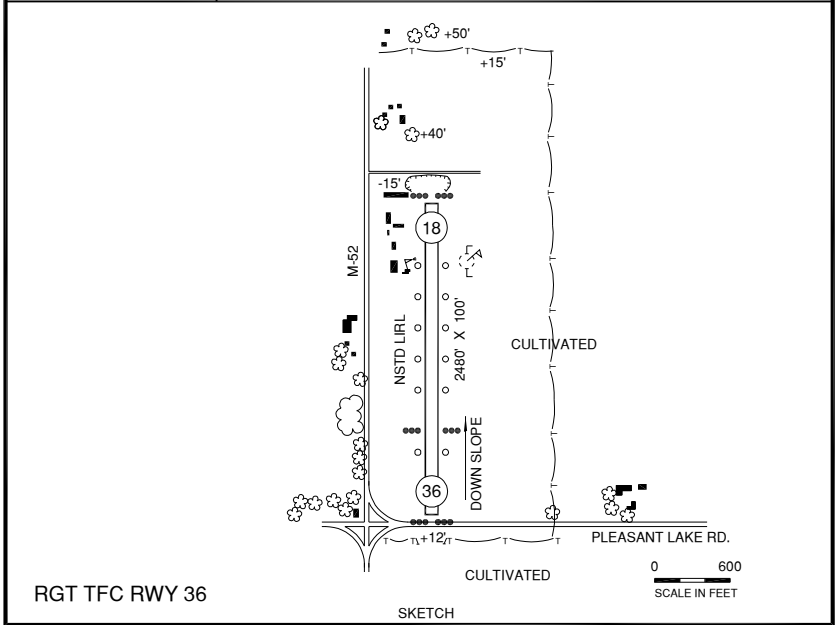
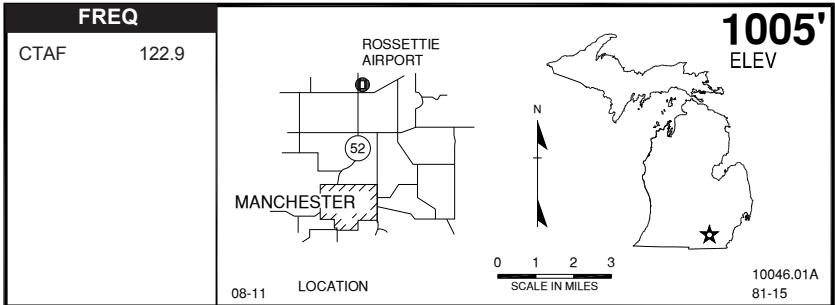
TRNSP: None

MEALS: In town, 2.0 mi

RON: In town, 2.0 mi

● Rwy 10/28 surf rough.

MANCHESTER, ROSSETTIE (75G)



RWY LENGTH BEYOND DISPLACED THR
 18/ —
 36/ 1815'

COORDINATES
 42° 11.70'N
 084° 01.85'W

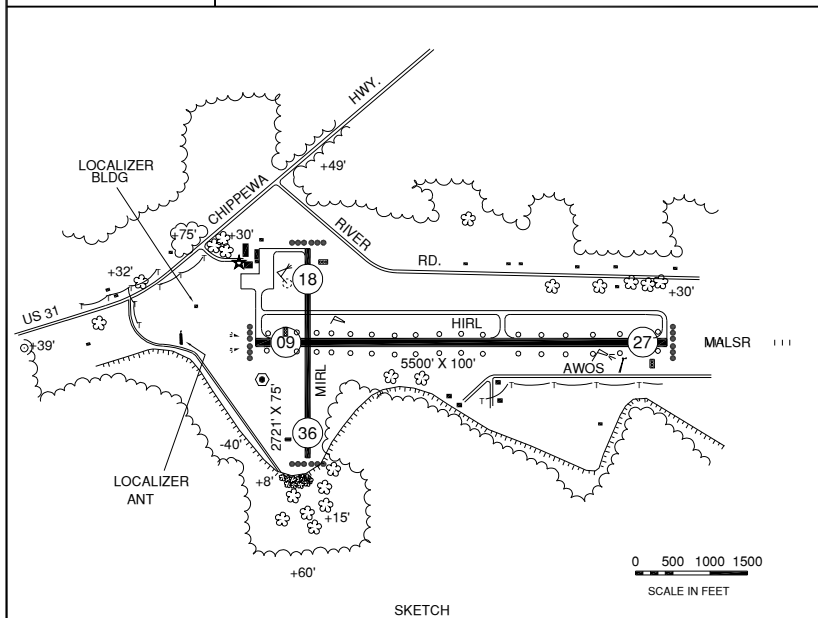
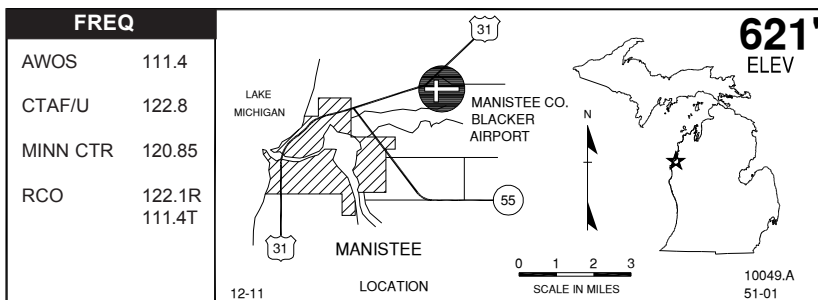
License
 Basic Utility

FM CITY: 3.0 mi N
LGT: Nstd LIRL DUSK-DAWN
MGR: Alice G. Rossettie
PH: 734-428-8954
FBO: Rossettie Arpt Inc 734-428-8954
ATND: Ireg (Mgr resides at arpt)

RDO NAV AIDS: 109.6 (JXN) 108° 20.0 NM to fid.
FUEL: None
RPR: None
WX: None
SNW RMVL: Yes, snow blowing
TRNSP: None
MEALS: In town, 3.0 mi
RON: In Chelsea, 9.0 mi

- Rgt tfc Rwy 36.
- Rwy rolling terrain, soft in spring.

MANISTEE COUNTY - BLACKER (MBL)



M

RWY LENGTH BEYOND DISPLACED THR

09/ — * 18/ —
27/ — * 36/ —

COORDINATES

44° 16.35'N
086° 14.81'W

License

Air Carrier

FM CITY: 3.0 mi NE

LGT: ROTG BCN, MIRL 18-36, HIRL'S 9/27, REIL'S 9, PAPI 27, 18/36 STD PCL, PAPI 9, 24 HRS

MGR: Barry J. Lind

PH: 231-723-4351

231-233-4143 (Aft hrs)

FBO: Orchard Beach Avn 231-723-8095

ATND: 0800-2000 Jun-Aug,

0800-1900 Sep

0800-1800 Oct

0800-1700 Nov-Apr

0800-1800 May

RDO NAV AIDS: IAP, 111.4 (MBL) at fld. NDB

(MB) 254 KHz 276° 4.5 NM to fld, ILS 108.35

FUEL: 100LL, JET A

RPR: Minor A & P

WX: AWOS 231-723-6073, WSI

SNW RMVL: Yes

TRNSP: Taxi, rental cars 231-723-8095, cc, dial-a-ride.

MEALS: In town, 4.0 mi

RON: In town

- Admin bldg access-depress 5-3-2-1
- PAEW on rwys wint mos.
- Deer & birds on & invof arpt.

MANISTIQUE, SCHOOLCRAFT CO (ISQ)

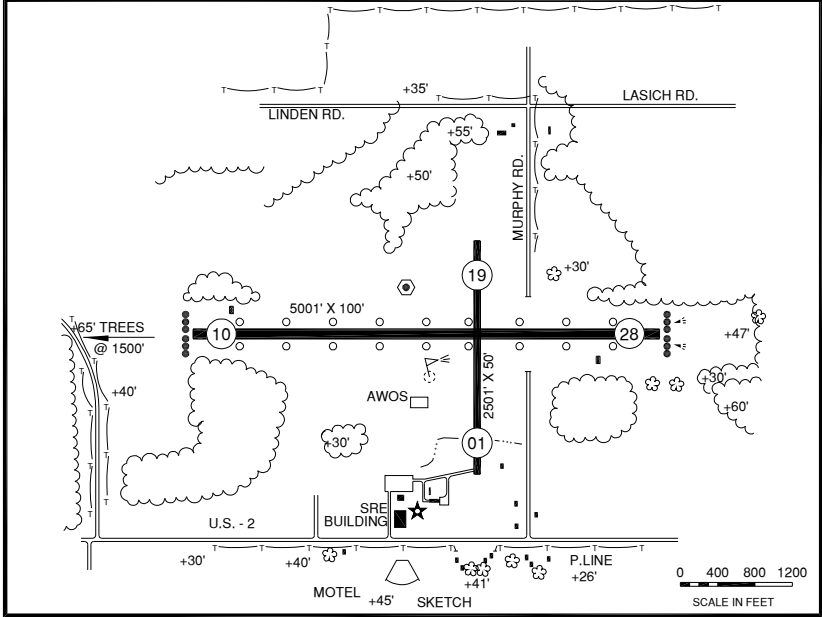
FREQ	
CTAF/U	122.8
RCO	122.25 (GREEN BAY FSS)
AWOS	110.4

LOCATION

685'

ELEV

10052.A
75-02



RWY LENGTH BEYOND DISPLACED THR

10/ — * 01/ —
28/ — * 19/ —

COORDINATES

45° 58.48'N
086° 10.31'W

License
General Utility

FM CITY: 3.0 mi NE

LGT: ROTG BCN. MIRL 10/28, PAPI,
rwy 28 REIL'S-STD PCL CTAF

MGR: James M. Hursey
Rudy Evovich, Asst.

PH: 906-341-5522

906-341-0515 (Aft hrs mgr res)
906-341-6782 (Asst res)
906-286-2594 (Asst cell)

FBO: County operated

ATND: Jun - Oct Mon-Fri 0800-1600
Nov - May Mon-Fri 0800-1400

● For aft hrs attendant call 906-341-5522 during attendant hrs, or 906-341-0515 (Mgr res) or 906-286-2594 (Asst. cell).

- Birds & deer invof arpt.
- Admin bldg access-depress V, then simultaneous III II, then I.
- *No call in fee for aft hrs.
- Camping permitted.
- Wireless internet, password KISQ 1228
- Fuel self serv aft attended hr.

RDO NAV AIDS: IAP, 110.4 (ISQ) at fld.

FUEL: 100LL, JET A**

RPR: None

WX: AWOS 906-341-8585, WX briefing system

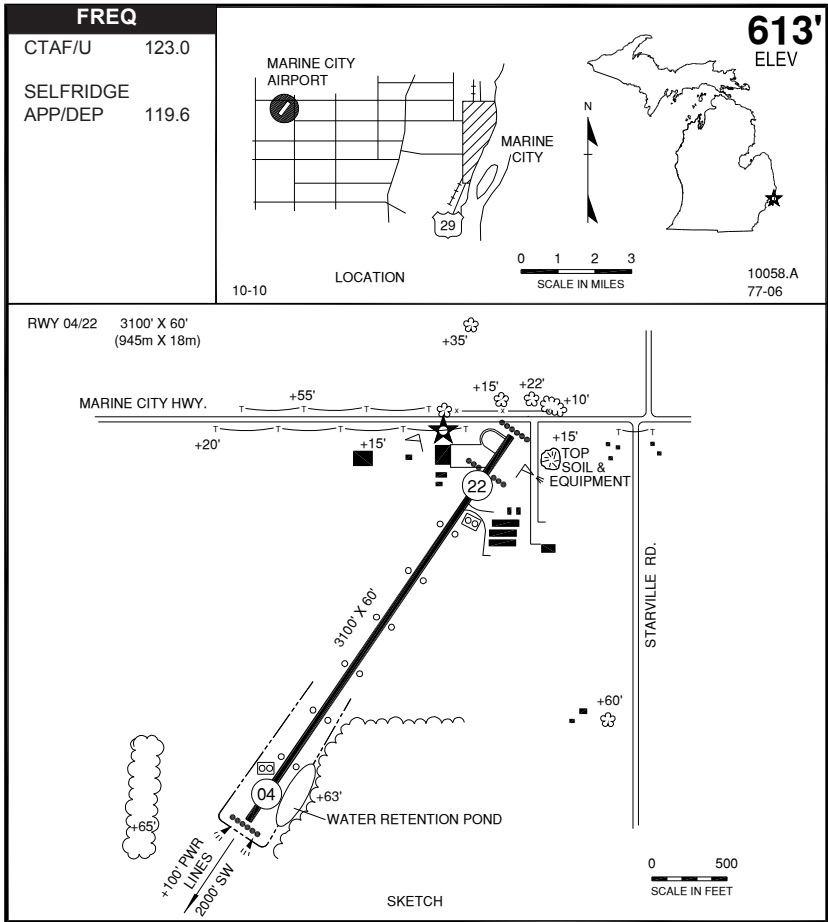
SNW RMVL: Yes-vfy cond

TRNSP: Rntl car In town,
Public Transit 906-341-2111

MEALS: .5 mi

RON: Adj

MARINE CITY (76G)



M

RWY LENGTH BEYOND DISPLACED THR
04/ —
22/ 2805'

COORDINATES
42° 43.25'N
082° 35.75'W

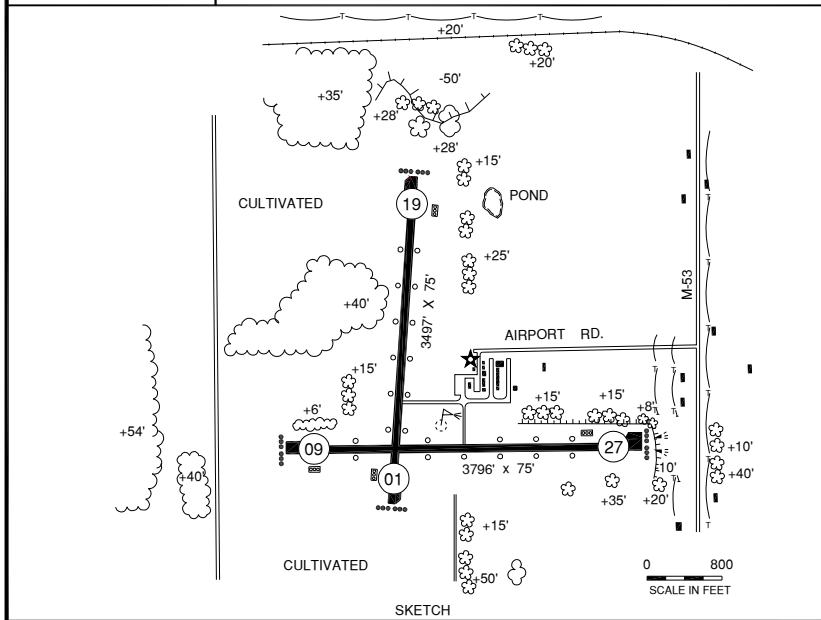
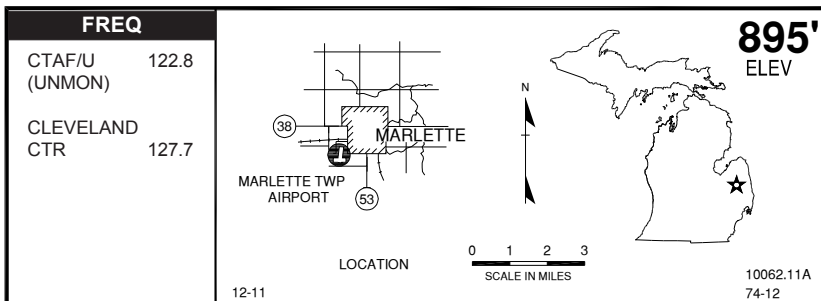
License
General Utility

FM CITY: 4.0 mi W
LGT: ROTG BCN, MIRL (NSTD)* SS-SR.
PAPI's 4/22, REILS 4
MGR: Willis C. "Bill" Manter
Nancy Manter, Asst
PH: 810-765-8289
FBO: Marine City Avn 810-765-8289
ATND: Days (Owner resides at arpt)

RDO NAV AIDS: 114.0 (ECK) 177° 32.5 NM to fid.
FUEL: 100LL
RPR: Major A&P
WX: DTN terminal.
SNW RMVL: Yes
TRNSP: Taxi in town, CC
MEALS: In town, 5.0 mi
RON: In town, 5.0 mi

- Rwy 04/22 *MIRL lctd nstd 23' fm rwy edge.
- Rwy 04 apch +100' pwr line, 2000' SW.
- TPA 1413 (800)

MARLETTE TOWNSHIP (77G)



RWY LENGTH BEYOND DISPLACED THR

01/ — * 09/ —
19/ — * 27/ —

COORDINATES

43° 18.71'N
083° 05.46'W

License

General Utility

FM CITY: 1.0 mi SW

LGT: ROTG BCN. MIRL, REIL, PAPI-STD
PCL CTAF.

MGR: Ted Huntoon

Richard Long, Asst

PH: 989-635-3431 (Res Eve)

989-635-3596 (Asst day)

FBO: Burton Aviation 989-635-3500

ATND: M-F, 0800 - 1700

RDO NAV AIDS: IAP, 114.0 (ECK) 289° 16.7

NM to fld.

FUEL: 100LL*

RPR: Major A & P

WX: Internet access

SNW RMVL: Yes

TRNSP: None

MEALS: In town, 1.0 mi

RON: B&B 0.3 mi

- Terminal/Admin bldg access—depress V, III, II, I, *.
- Glider opns.
- *Self serve credit card 24 hrs.
- Rwy 01/19 & 09/27 NSTD MIRL; lgts last 2000' not split amber/clear lens.

MARQUETTE, SAWYER INT'L (SAW)

FREQ	
AWOS	118.375
TWR/*CTAF	119.975
GND	121.65
RCO	123.6
UNICOM	122.7

RWY 01/19 12366' X 150'
(3769m X 46m)

M

RWY LENGTH BEYOND DISPLACED THR

01/ ———
19/ ———

COORDINATES

46 ° 21.22'N
087 ° 23.72'W

License
Air Carrier

FM CITY: 17.0 MI S

LGT: ROTG BCN, HIRL, MALSR, PAPI 1/19,
REIL 19, PCL CTAF when twr closed*

MGR: Keith Kaspari

PH: 906-346-3308 Ext. 222
906-458-6336 (Cell)

FBO: Boreal Avn 906-346-5802
906-222-3062 (Pgr)
906-222-3062 (Aft hr)

ATCT: 906-372-9208 (Tower mgr)

ATND: 0800-2100 (FBO)

RDO NAV AIDS: IAP, 117.1 (SAW) at fld. NDB
(SO) 410KHz 013° 5.6 NM, ILS 110.1

FUEL: 100LL, JET A

RPR: Avionics, minor A&P, OX

WX: AWOS 906-346-5126, WX briefing
system

SNW RMVL: Yes

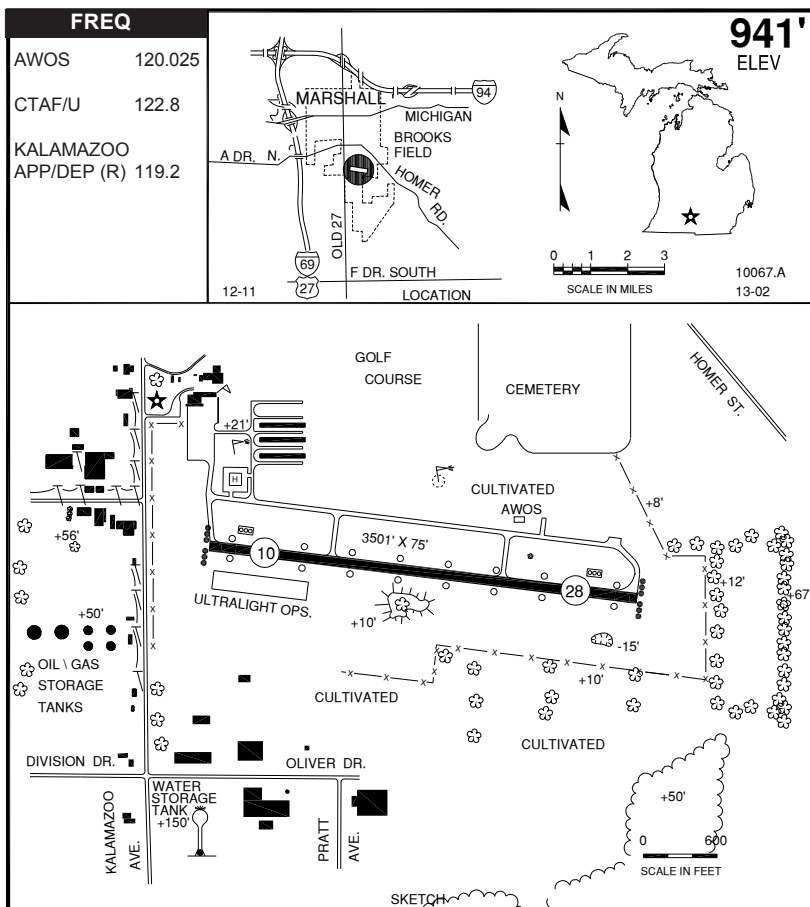
TRNSP: CC (FBO)

MEALS: On arpt

RON: On arpt

- FAA class "D" airspace during *twr opns 0600-2200, otr times class "E" acft Indg/dep adv intentions when ATCT is clsd. Radio call "Sawyer Tower"
- Snw rmvl opns wint mos, vehicles opns montr CTAF
- Nov15 - April 15 txy closures G.
- Birds on & invof arpt.
- Ramp fee - may be waived with fuel purchase.

MARSHALL, BROOKS FIELD (RMY)



RWY LENGTH BEYOND DISPLACED THR

10/ —
28/ —

COORDINATES

42° 15.07'N
084° 57.33'W

License

General Utility

FM CITY: 1.0 mi S

LGT: ROTG BCN, MIRL (10% intsty), PAPI
SS-SR intsty cfl – STD PCL CTAF.

MGR: John Riske III

PH: 269-781-4447 (Arprt)

FBO: None

ATND: 0800-Dusk (excp major holidays)

RDO NAV AIDS: IAP, 109.4 (BTL) 107° 13.7
NM to fld.

FUEL: 100LL* 90 oct unleaded alchol-free

RPR: None

WX: AWOS 269-781-9070, WX briefing
system

SNW RMVL: Yes

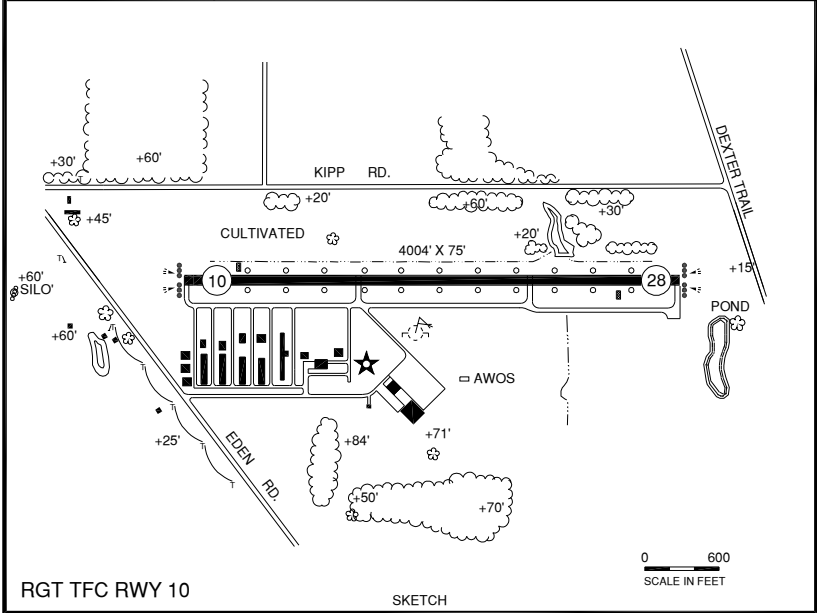
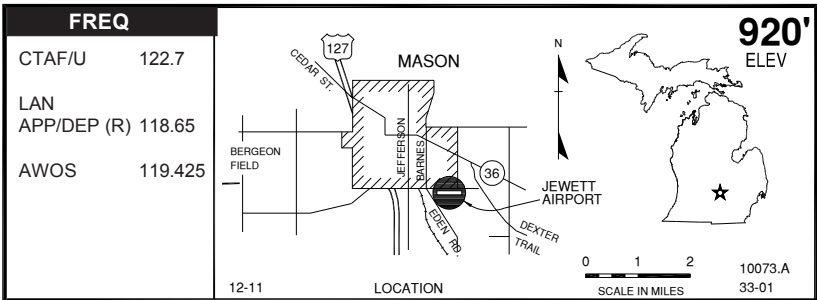
TRNSP: Rntl car, Dial-A-Ride

MEALS: Adj, 1.0 mi , cc

RON: Motel 1.5 mi , cc

- Noise sensitive area E of arprt.
- Noise abatement proc—fly rwy hdg to 1000' AGL (1941' MSL) before turn.
- Glider, skydiving, ultralight & heli activity at arprt. Ultralights fly 500' AGL (1441' MSL) pattern S of rwy.
- Deer on & invof arprt.
- +150' lgt'd water twr 3000' S of arprt.
- +Helipad 50x50 w/peri lghts.
- *24 hr credit card.

MASON JEWETT FIELD (TEW)



M

RWY LENGTH BEYOND DISPLACED THR
 10/ —
 28/ —

COORDINATES
 42° 33.80'N
 084° 25.35'W

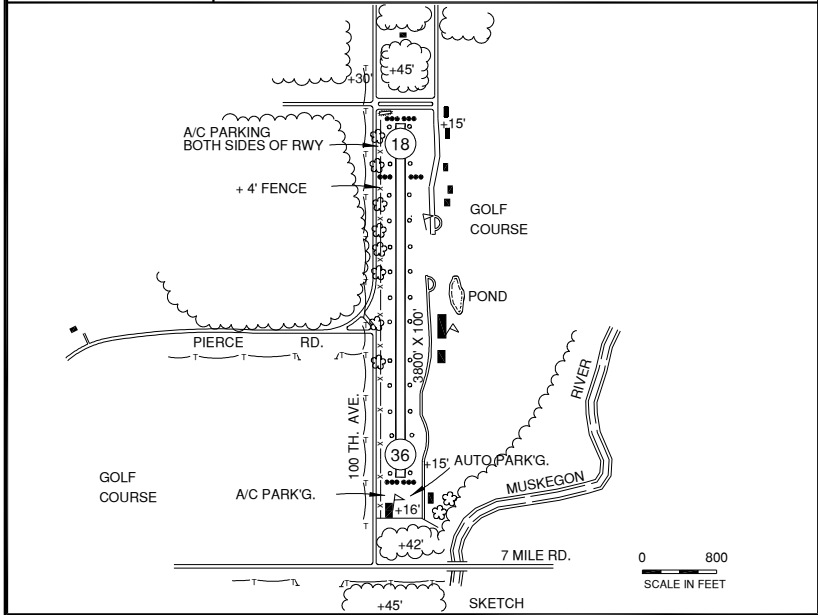
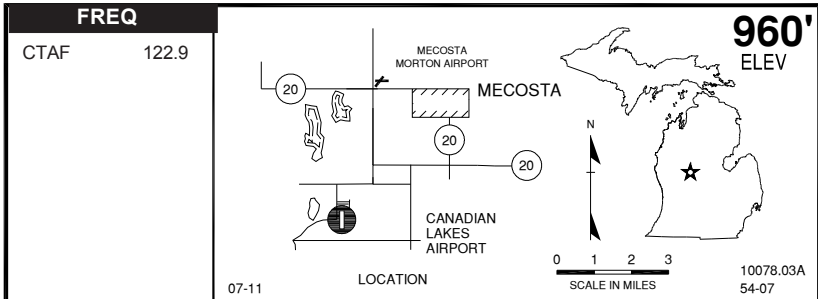
License
 General Utility

FM CITY: 1.3 mi SE
LGT: ROTG BCN. MIRL, PAPI, REIL—Dusk-2400, thrfr STD PCL CTAF.
MGR: Robert Selig, Exec Director
 Mike Daigle, Deputy Exec Director
PH: 517-244-0666 (Unatnd arpt ph)
 517-321-8525 (Capital Reg Aprt)
FBO: None
ATND: unatnd

RDO NAV AIDS: IAP, 110.8 (LAN) 132° 15.2 NM to fld.
FUEL: 100LL, JET A, CC 24hr
RPR: None
WX: AWOS 517-676-5607, Wx briefing system
SNW RMVL: Yes
TRNSP: Dial-A-Ride
MEALS: In town, 1.5 mi
RON: In town, 2.0 mi

- Rgt tfc Rwy 10.
- Powered parachute activity prohibited.
- TPA 2000'MSL (SE) M.E. & turbine acct 2500' MSL
- Deer and birds invof arpt.
- Admin bldg access —depress V, then simultaneous III-II, then I.

MECOSTA, CANADIAN LAKES (0C5)



RWY LENGTH BEYOND DISPLACED THR
 18/ 3227'
 36/ —

COORDINATES
 43° 34.62'N
 085° 17.03'W

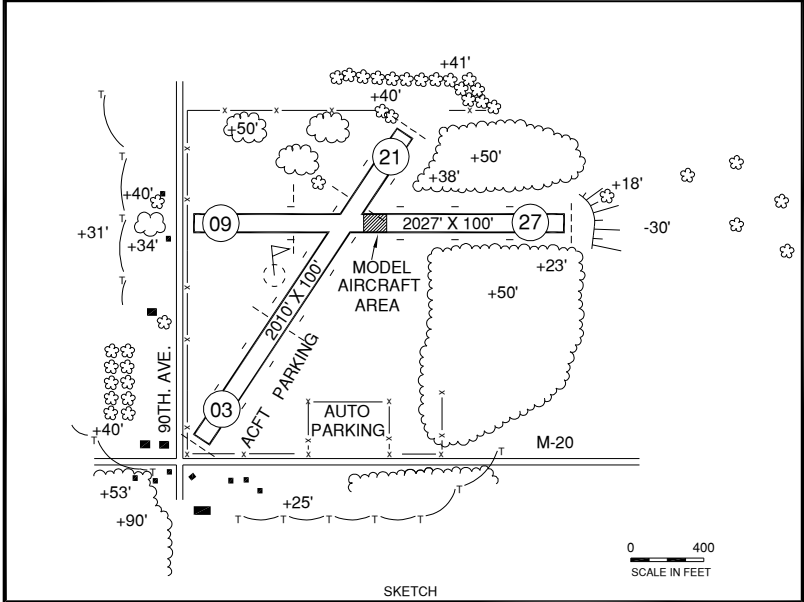
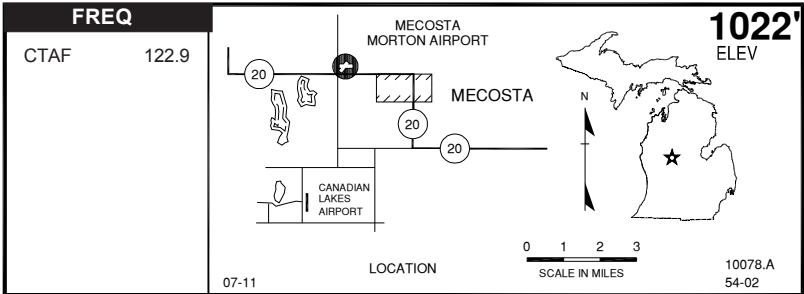
License
 Basic Utility

FM CITY: 5.0 mi SW
LGT: LIRL
MGR: Ted Goulet
 Jennifer Dougherty, Asst
PH: 231-972-7821
 989-506-0977
FBO: None
ATND: Ireg (mgr resides at arpt)

RDO NAV AIDS: 117.6 (HIC) 092° 20.0 NM to
 fld.
FUEL: None
RPR: None
WX: None
SNW RMVL: None
TRNSP: None
MEALS: 1.0 mi
RON: In town, 12.0 mi

- Upon dep maintain rwy heading to 1500' msl
- Contact arpt mgr for rwy conditions.
- Contact arpt mgr to secure automobile visitor parking permit.
- Deer on & invof arpt.
- Auto parking in designated area only.

MECOSTA - MORTON (27C)



M

RWY LENGTH BEYOND DISPLACED THR

03/ 1250' * 09/ 1481'
21/ 1550' * 27/ —

COORDINATES

43° 37.75'N
085° 15.75'W

License
Basic Utility

FM CITY: 1.8 mi W
LGT: None
MGR: Tom Shortle
PH: 231-250-5441
FBO: None
ATND: unatnd

RDO NAV AIDS: 117.6 (HIC) 082° 20.0 NM to fld.
FUEL: None
RPR: None
WX: None
SNW RMVL: None
TRNSP: CC by prior arngmt w/ Mgr
MEALS: Adj (across M-20)
RON: None

- CLSD when snow covered or with standing water.
- Rwy's rough.
- Rdo ctl acct ops on rwy 09-27 east of 3/21 intersection.

MENOMINEE - MARINETTE TWIN CO (MNM)

FREQ	
AWOS	109.6
CTAF/U	122.8
GREEN BAY APP/DEP	119.5
Minneapolis CTR	125.55

08-11 LOCATION

625'
ELEV

10083.A
55-01

SCALE IN MILES

M

SKETCH

SCALE IN FEET

RWY LENGTH BEYOND DISPLACED THR

14/ — * 03/ —
32/ — * 21/ —

COORDINATES

45° 07.60'N
087° 38.31'W

License

General Utility

FM CITY: 0.9 mi NW

LGT: ROTG BCN. HIRL rwy 03/21; MIRL,
VASI rwy 14/32; PAPI 21, MALS Rwy 03—
STD PCL CTAF.

MGR: Tim Spreen

PH: 906-863-8408
906-282-0260 (aftr hr)

FBO: None

ATND: Mon-Fri 0800 -1700
Sat 0800-1200
Sun Unattended

● Noise sensitive area 7 miles S of arpt.

● 24 hr self-serve 100LL w/ major cc.

● Call - in fee \$75.00.

● Ldg fee piston twin \$35, turbin twin & larger \$50 ldg & ramp fee waived w/min 50 gallon fuel purchase.

● Birds & deer on & invof arpt.

● Unlgt 732' MSL (199' AGL) twr 1.5 mi SSW.

● Admin bldg access 24 hr on ramp side. Aftr hrs return to ramp via veh parking lot pedestrian gate CTAF.

RDO NAV AIDS: IAP, 109.6 (MNM) 173° 3.2
NM to fld, NDB (TN) 239 KHz 035° 4.6 NM
to fld.

FUEL: 100LL, JET A w/prist

RPR: Minor A&P

WX: AWOS 906-863-8801,
WX briefing system

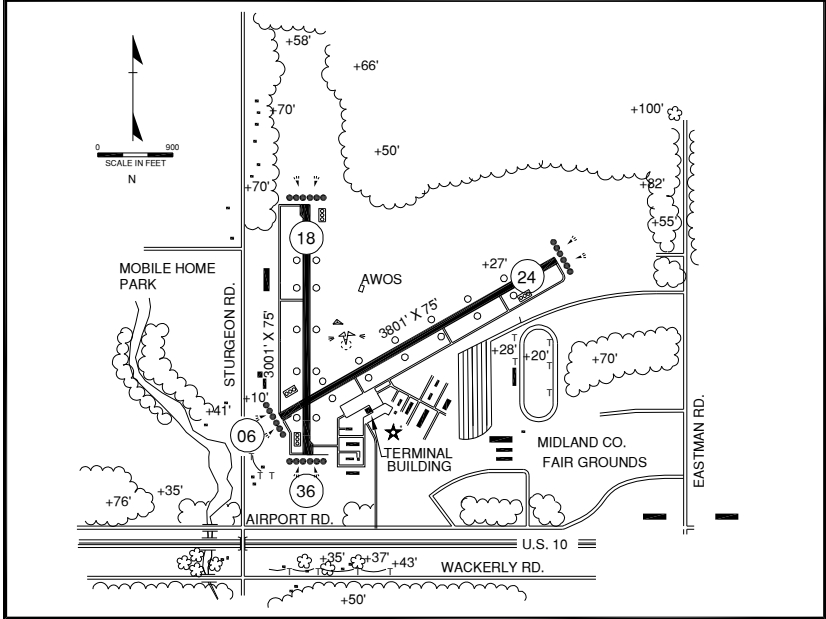
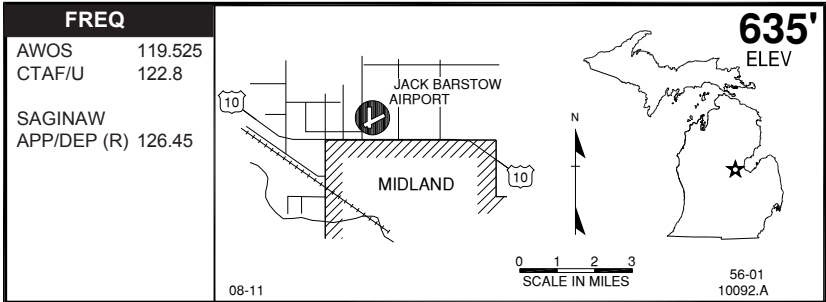
SNW RMVL: Yes

TRNSP: CC avb, Rntl car

MEALS: In town, 1 mi, CC

RON: In town, 1.0 mi, CC

MIDLAND, JACK BARSTOW (IKW)



M

RWY LENGTH BEYOND DISPLACED THR

06/ — * 18/ —
24/ — * 36/ —

COORDINATES

43° 39.78'N
084° 15.68'W

License

General Utility

FM CITY: 3.0 mi NW

LGT: ROTG BCN. MIRL 10% INTSTY Dusk-2300, MIRL AFT 2300, INTSTY CTL, REIL'S, PAPI—STD PCL CTAF.

MGR: Brian McManus

JT Rairigh, Janine Rairigh, Assts

PH: 989-835-3231 (Arpt)
989-837-3348 (City Hall)
989-615-1103 (Aft hrs cell)

FBO: City Operated

ATND: M-F 0800-1800, S-S 0800-1600
Unatnd major Holidays

RDO NAV AIDS: IAP, 112.9 (MBS) 318°

11.2 NM to fld.

FUEL: 100, JET A-55MB, 24 hr self serve

RPR: Major

WX: AWOS 989-835-5841, internet access

SNW RMVL: Yes

TRNSP: CC, Rntl car by arngmt,

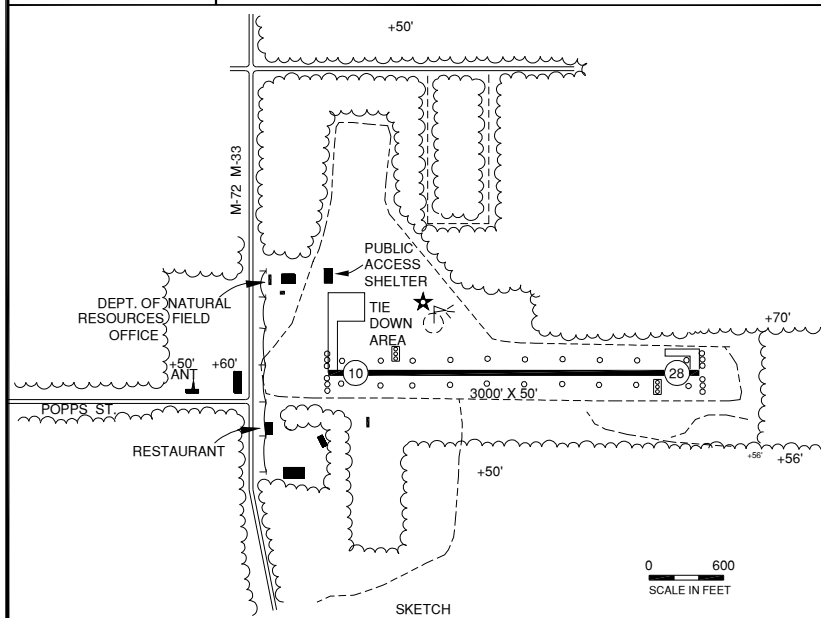
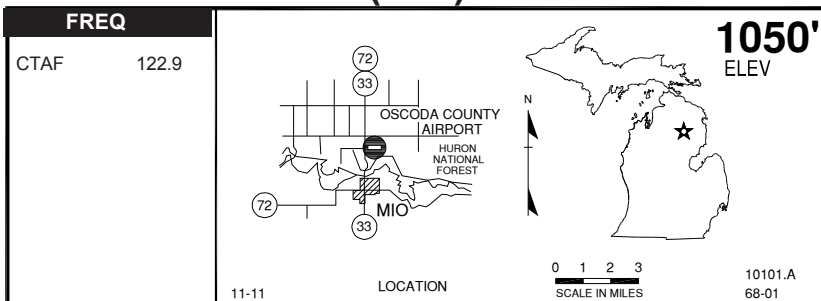
Dial-A-Ride, taxi, limo

MEALS: 0.75 mi, CC

RON: 0.75 mi, CC

- TPA 1700' MSL.
- Deer on & invof arpt.
- Noise sensitive area S of arpt, preferred Rwy 06/24.
- Occl ultralight activity.
- Admin bldg access (use east door)—depress 5,3,2,1.

MIO, OSCODA COUNTY DENNIS KAUFFMAN (51M)



RWY LENGTH BEYOND DISPLACED THR

10/ ----
28/ ----

COORDINATES

44° 40.83'N
84° 07.50'W

License

General Utility

FM CITY: 2.0 mi N

LGT: STD PCL

MGR: David E. Kauffman

PH: 989-848-2446 (Res)
989-826-6864 (Unatnd)

FBO: None

ATND: Unatnd

RDO NAV AIDS: 109.2 (GLR) 132° 32.0 NM
to fld.

FUEL: None

RPR: None

WX: None

SNW RMVL: Yes, vfy cond*

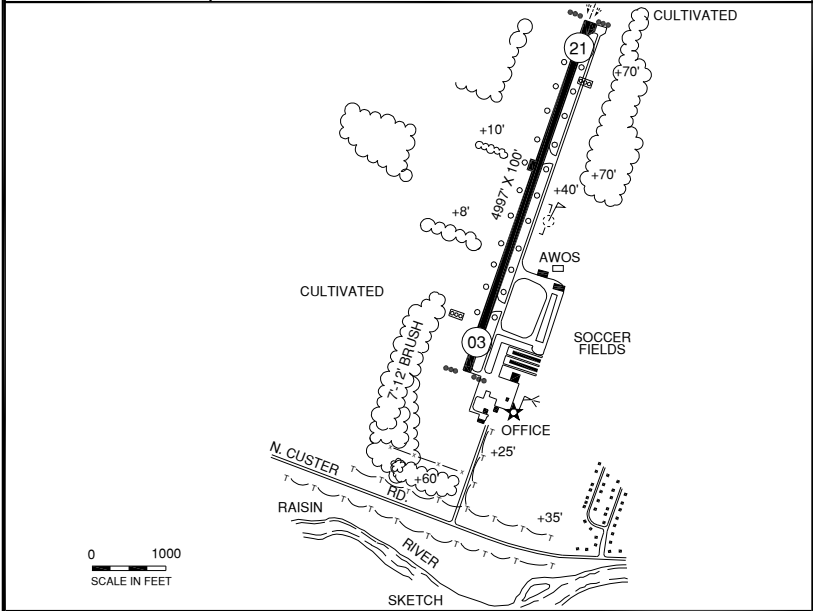
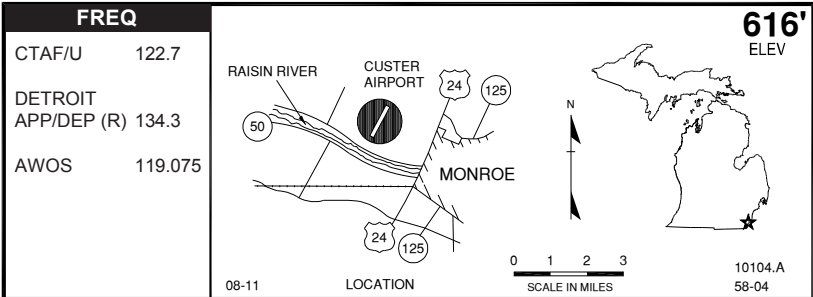
TRNSP: None

MEALS: Adj

RON: Adj

- Twr 2.5 mi SW of arpt 1552 MSL.
- Pub shelter in S.E. corner of hgr. For access depress V, then simultaneous III-II, then I.
- Deer on and invof arpt.

MONROE, CUSTER (TTF)



RWY LENGTH BEYOND DISPLACED THR

03/ —
21/ —

COORDINATES

41° 56.39'N
083° 26.08'W

License

General Utility

FM CITY: 2.5 mi NW

LGT: ROTG BCN, actvt MIRL rwy 03/21 & REIL rwy 21 CTAF.

MGR: Scott Davidson

Jerard E. Delaney II, Asst

PH: 734-241-6800

734-384-9616 (Asst)

FBO: Monroe Avn 734-384-9616

ATND: 0800-Dusk, aft hrs by request

RDO NAV AIDS: IAP, 115.7 (CRL) 174° 6.6

NM to fld. 113.1 (VWV) 019° 31 NM to fld

FUEL: 100LL, JET A

RPR: Major A&P

WX: AWOS 734-384-0259, WSI, HIWAS

SNW RMVL: Yes, 0800 - dusk

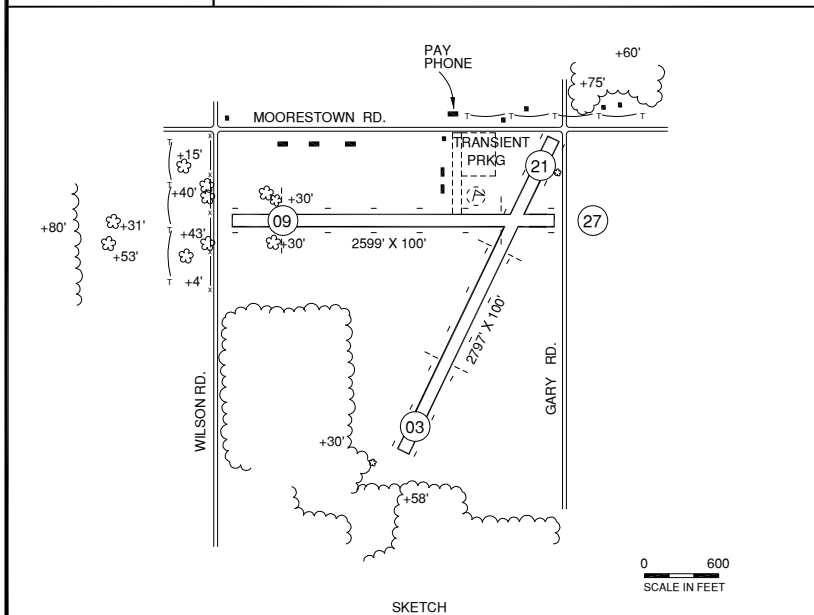
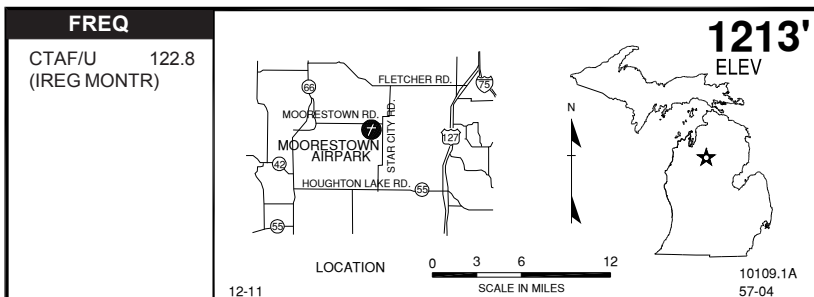
TRNSP: Taxi, mtl car (by prior arngmt).

MEALS: In town, 1.0 mi

RON: In town, 5.0 mi

- TPA single engine 1400' MSL, M.E. & turbine 1900' MSL.
- Noise Sensitive areas. Dep acft max rate of climb to TPA.
- Rwy 21 single engine fly rwy heading for 1 mi, M.E. & turbine fly rwy hdg for 2.5 mi.
- Birds & deer invof rwy.
- Maint run-up allowed Mon-Fri 0600-2200, per arpt regulations.

MOORESTOWN AIRPARK (6Y0)



RWY LENGTH BEYOND DISPLACED THR

03/ 1998'* 09/ 2200'
 21/ 1799'* 27/ 2170'

COORDINATES

44° 27.75'N
 084° 59.75'W

License
 Basic Utility

FM CITY: 1.0 mi SE

LGT: None

MGR: Lois Whipple

PH: 231-229-4232
 231-229-4443 (Res Eve)

FBO: None

ATND: Apr-Nov Dawn-Dusk

RDO NAV AIDS: 111.6 (HTL) 297° 15.0 NM to fid.

FUEL: None

RPR: None

WX: None

SNW RMVL: No-vfy cond

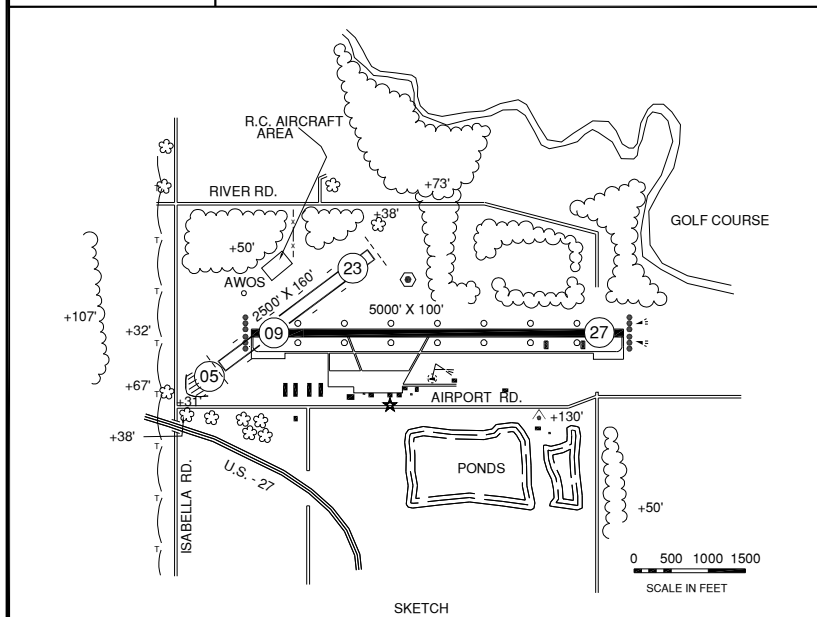
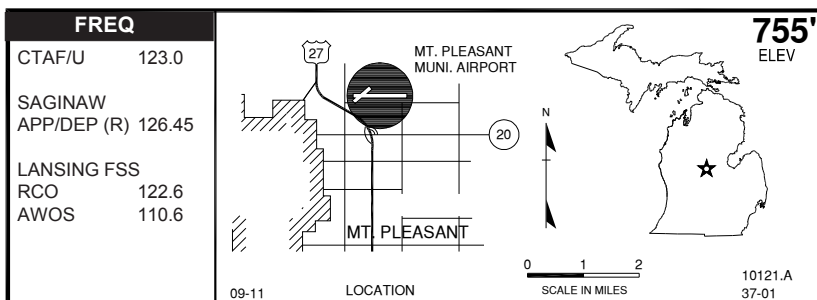
TRNSP: None

MEALS: At arpt

RON: None

- Gas station / store cafe belong to arpt owner.
- Wint opns for ski equipped acct only.
- Birds on and invof arpt.

MT. PLEASANT MUNICIPAL (MOP)



RWY LENGTH BEYOND DISPLACED THR

05/ — * 09/ —
23/ — * 27/ —

COORDINATES

43° 37.30'N
084° 44.24'W

License

General Utility

FM CITY: 2.0 mi NE

LGT: ROTG BCN, MIRL REIL'S, PAPI—STD
PCL CTAF.

MGR: John D. Benzinger
Todd Tarlton, Asst

PH: 989-772-2965
989-944-1188 (cell)
989-772-6375 (Mgr Res)

FBO: Gateway Air Svc 989-775-3515

ATND: 0800-Dusk

RDO NAV AIDS: IAP, 110.6 (MOP) at fld.

FUEL: 100LL, JET A-55MB

RPR: Major A&P

WX: AWOS 989-773-2885, WSI

SNW RMVL: Rwy 09/27

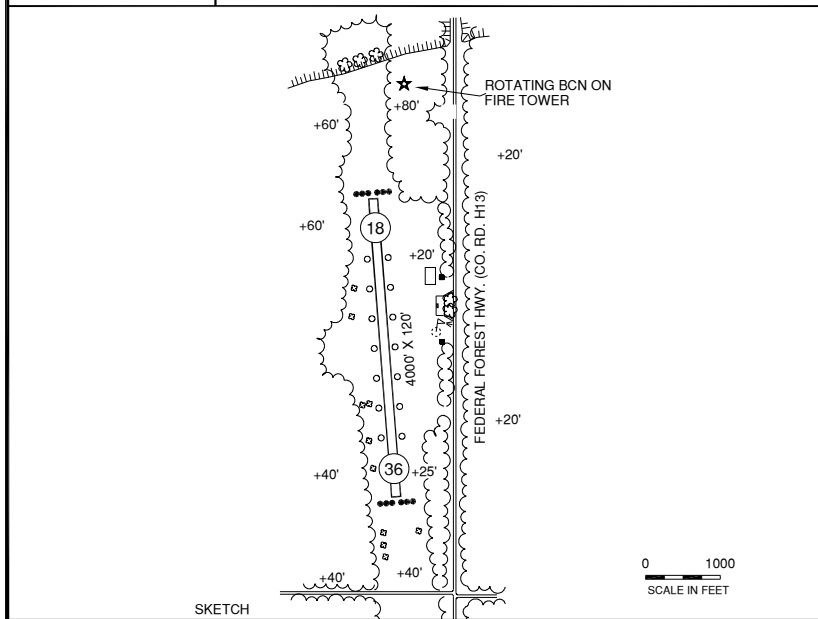
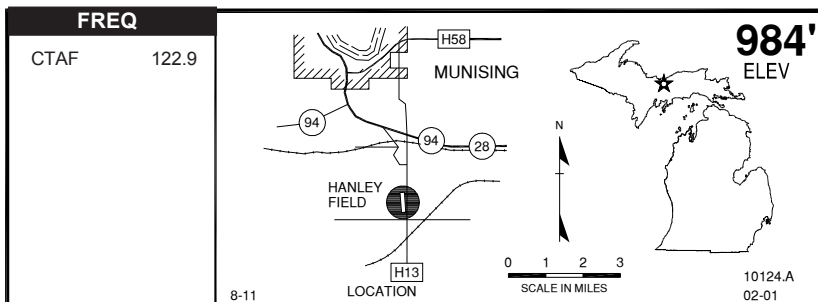
TRNSP: Rntl car, Dial-A-Ride,
taxi 989-779-8294

MEALS: 1.0 mi, CC

RON: 1.0 mi, CC

- Rwy 27 noise abatement; climb on rwy hdg to 1,500' MSL before turning.
- Skydiving activity daily 0900-SS.
- Deer & birds on & invof apt.
- Admin bldg access—depress V, then simultaneous III - II, then I; Gate access, 1,2,3,4.
- 24 hr major credit card self serv.

MUNISING, HANLEY FIELD (5Y7)



RWY LENGTH BEYOND DISPLACED THR

18/ —
36/ —

COORDINATES

46° 21.25'N
086° 37.26'W

License

General Utility

FM CITY: 3.0 mi SE

LGT: ROTG BCN, LIRL (Sumr mos of arpt opn)

MGR: Richard Bowerman

PH: 906-387-3572

FBO: None

ATND: May - Nov Unatnd,

CLSD Nov - May 14 & when snw covered

RDO NAV AIDS: 110.4 (ISQ) 322° 29.0 NM to fld.

FUEL: None

RPR: None

WX: None

SNW RMVL: None

TRNSP: Alger Co Public Transp, Mon-Fri

0700-1700, 906-387-4845 or 800-562-7814

MEALS: In town

RON: In town

- Birds & deer invof arpt.
- Admin bldg access—depress V, then simultaneous III-II, then I.
- Camping permitted.

MUSKEGON COUNTY (MKG)

FREQ	
ATIS	124.3
GND	121.6
TWR/CTAF*	126.25
MKG APP (R)	
NE/NW	118.2
SE/SW	119.8
(OF ACTIVE RWY)	
LANSING FSS	
RCO	122.5
UNICOM	122.95

12-08 LOCATION

629'
ELEV

10127.A
61-01

RWY 06/24	6501' X 150' (1981m X 46m)
RWY 14/32	6100' X 150' (1859m X 46m)

MONA LAKE

AIRPORT RD.

MALSFR

ELLIS RD.

T-HGRS

SCALE IN FEET

MKG
TAXIWAY
SKETCH
NEXT PG

RWY LENGTH BEYOND DISPLACED THR
 06/ — * 14/ —
 24/ — * 32/ —

COORDINATES
 43° 10.13'N
 086° 14.26'W

License
 Air Carrier

FM CITY: 4 mi S
LGT: ROTG BCN. HIRL, MIRL, VASI, REILS,
 MALSFR. Aft twr opn*— STD PCL CTAF.
MGR: Marty Piette
PH: 231-798-4596
 231-798-2126 (Aft hr)
FBO: Executive Air Transport 231-798-2126
ATND: 0600-2100

RDO NAV AIDS: IAP, 115.2 (MKG) 271° 8.7
 NM to fld, NDB (MK) 219 KHz 316° 4.2 NM
 to fld, ILS.
FUEL: 100LL, JET A
RPR: Major A&P, Avncs
WX: HIWAS, ATIS 231-798-1317
SNW RMVL: Yes
TRNSP: Rntl car (at arpt), Taxi, limo
MEALS: At arpt / in town
RON: In town

- FAA Class "D" Airspace durg *twr opn 0600-2300, otr times Class "E".
- Deer & birds on & invof arpt.
- Landing fee.
- Rwy 14/32 clsd between 2300-0600 daily.

MUSKEGON COUNTY TAXIWAY

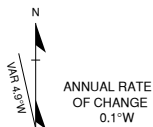
FREQ

ATIS 124.3
 GND 121.6
 TWR/CTAF* 126.25
 MKG APP (R)
 NE/NW 118.2
 SE/SW 119.8
 (OF ACTIVE RWY)

LANSING FSS
 RCO 122.5
 UNICOM 122.95

CAUTION: BE ALERT TO RUNWAY CROSSING CLEARANCES.
 READBACK OF ALL RUNWAY HOLDING INSTRUCTIONS IS REQUIRED.

629



M

