

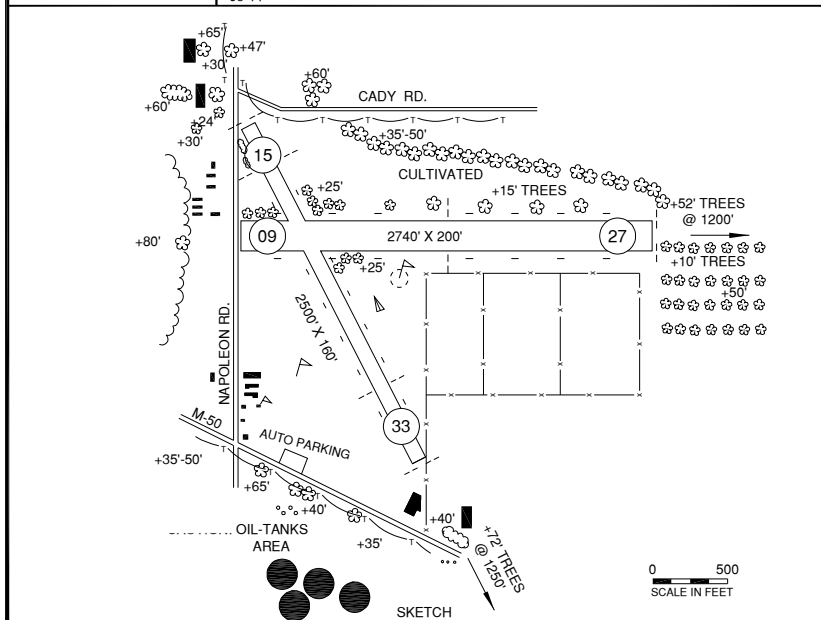
NAPOLEON (3NP)

FREQ	
CTAF	122.9
JXN ATIS	125.725

06-11

10139.A
38-03

963'
ELEV



N

RWY LENGTH BEYOND DISPLACED THR

09/ 1203' * 15/ 2210'
27/ — * 33/ 1950'

COORDINATES

42° 10.25'N
084° 15.58'W

License

Basic Utility

FM CITY: 1.0 mi NW

LGT: None

MGR: Anthony "Tony" Hurst

PH: 517-536-5353 (Untd arpt)
517-740-0333 (Cell)

FBO: None

ATND: Ireg, CLSD when snow covered

NAV AIDS: 109.6 (JXN) 128° 10.0 NM to fld.

FUEL: None

RPR: None

WX: None

SNW RMVL: No

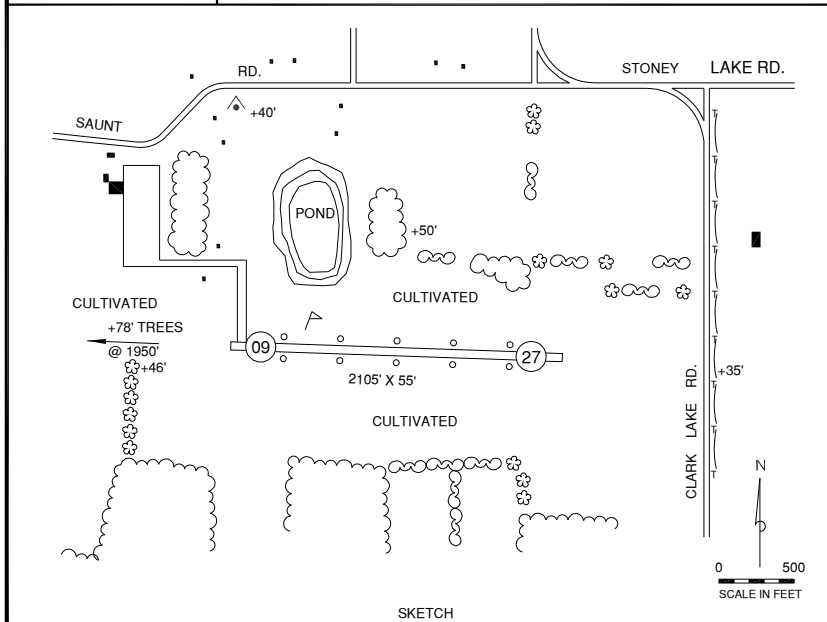
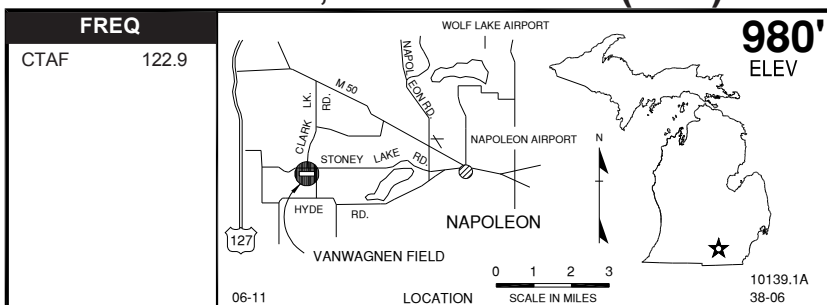
TRNSP: Taxi

MEALS: 0.4 mi

RON: Adj, In town

- Ultralight ops W side Rwy 15/33.
- Oil tanks S of arpt.
- Rwy soft in spring.

NAPOLEON, VANWAGNEN (6H4)



RWY LENGTH BEYOND DISPLACED THR

09/ —
27/ —

COORDINATES

42° 09.39'N
084° 20.06'W

License
Basic Utility

FM CITY: 5.0 mi W

LGT: NSTD LIRL

MGR: Brian Van Wagnen

PH: 517-764-4193

FBO: None

ATND: 24 hrs, Mgr lives @ NW corner of arpt

NAV AIDS: 109.6 (JXN) 143° 8.3 NM to fld.

FUEL: None

RPR: None

WX: None

SNW RMVL: Call for cond

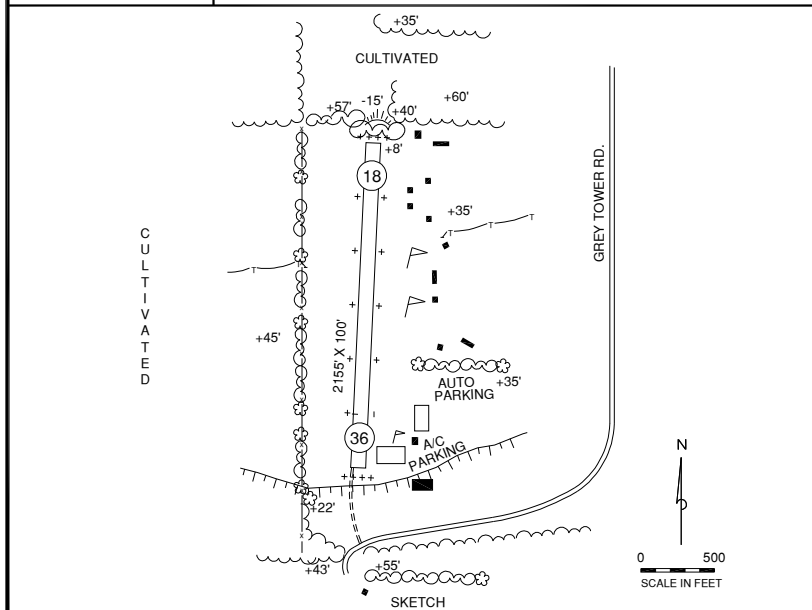
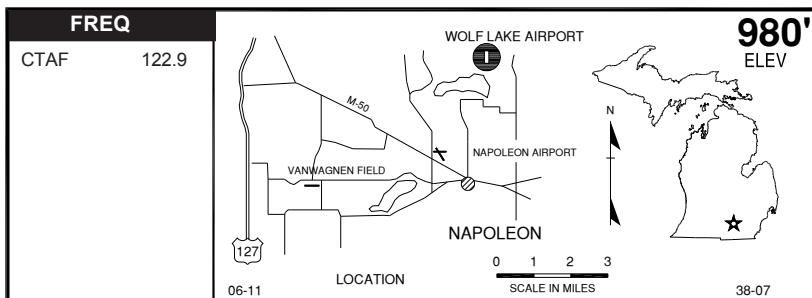
TRNSP: None

MEALS: In town, 4.0 mi

RON: None

● Rwy 27 seasonal +8' corn on apch.

NAPOLEON, WOLF LAKE (26W)



RWY LENGTH BEYOND DISPLACED THR

18/ —
36/ —

COORDINATES

42° 12.47'
84° 14.00'

License
Basic Utility

FM CITY: 4.0 mi NE

LGT: NSTD LIRL not for public use.

MGR: Michael Kraus

PH: 517-522-8202

FBO: None

ATND: Ireg

NAV AIDS: 109.6 (JXN) 112° 11.0 NM to fld.

FUEL: None

RPR: None

WX: None

SNW RMVL: No-vfy cond

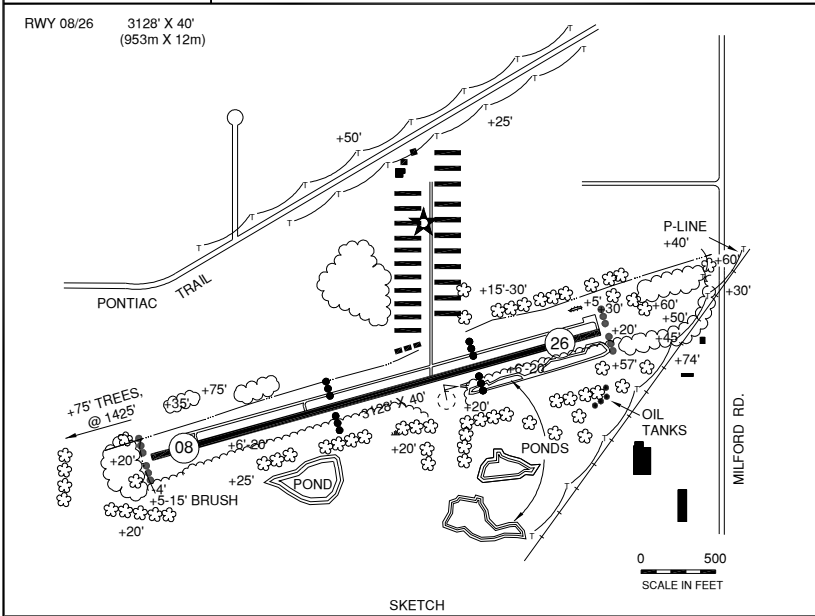
TRNSP: None

MEALS: In town, 4.0 mi

RON: In town, 4.0 mi

NEW HUDSON, OAKLAND / SW (Y47)

FREQ	926' ELEV
CTAF/U 122.7	
DETROIT APP/DEP (R) 127.5	
10-08	LOCATION
	10157.A 63-08



RWY LENGTH BEYOND DISPLACED THR
 08/ 1862'
 26/ 2264'

COORDINATES
 42° 30.19'N
 083° 37.42'W

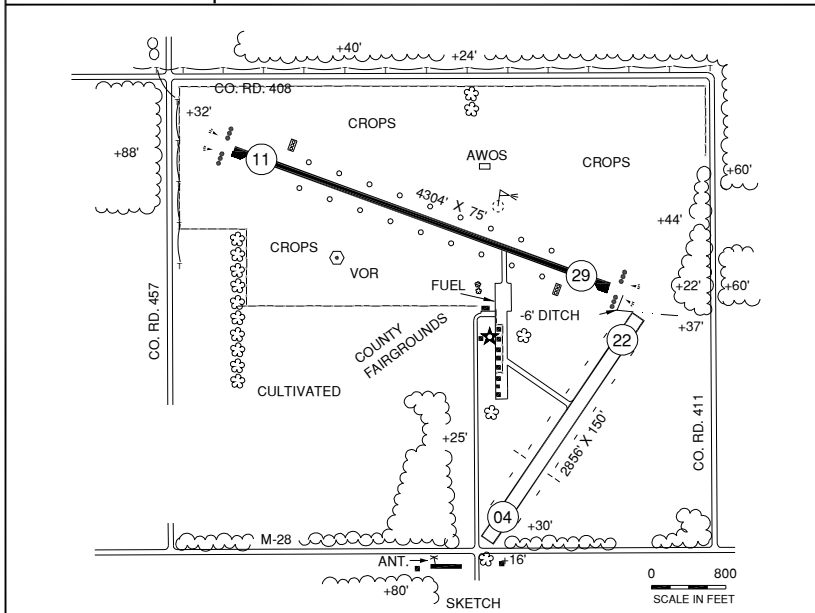
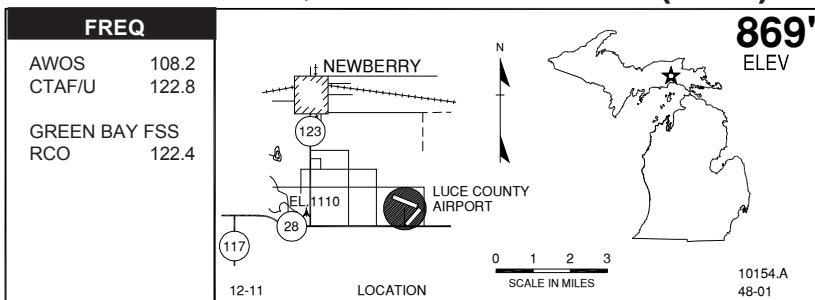
License
 Basic Utility

FM CITY: 1.0 mi SW
LGT: ROTG BCN, LIRL, VASI - CTAF 5x
MGR: Karl Randall
PH: 248-437-2333
 248-666-3900 (Mgr PTK)
FBO: American Aces 248-446-9734
ATND: 0830-Dusk

NAV AIDS: IAP, 114.3 (SVM) 350° 5.8 NM to fld.
FUEL: 100LL*
RPR: Major A&P
WX: DTN
SNW RMVL: Yes
TRNSP: Rntl car, taxi by prior arngmt
MEALS: In town, 0.5 mi
RON: In town, 0.5 mi

- Ocnl 4" - 6" drop off on rwy & taxiway shoulders.
- RDO call "New Hudson"
- *24 hrs self-serv w/major credit card.
- Admin bldg access—depress V, then simultaneous III-II, then I.
- Rwy 08-26 VASI ots indef.
- Trees & brush 70-120' S. side of rwy.

NEWBERRY, LUCE COUNTY (ERY)



N

RWY LENGTH BEYOND DISPLACED THR

11/ — * 04/ 1920'
29/ — * 22/ —

COORDINATES

46° 18.66'N
085° 27.43'W

License

General Utility

FM CITY: 3.0 mi SE

LGT: ROTG BCN SS-SR. MIRL, PAPI rwy 11/29, REIL rwy 11/29, wind cone & apron lgts—key mike 5X CTAF; 7X REILS.

MGR: Jay Hollnagel

PH: 906-293-2926
906-291-0570 (Mgr cell)

FBO: None

ATND: Mon-Fri 0800-1600, Sat, Sun on req

NAV AIDS: IAP, 108.2 (ERY) at fld

FUEL: 100LL* 24 hr Self Serve, Jet A

RPR: None

WX: AWOS 906-293-2979,

WX Briefing system

SNW RMVL: Rwy 11/29, vfy cond

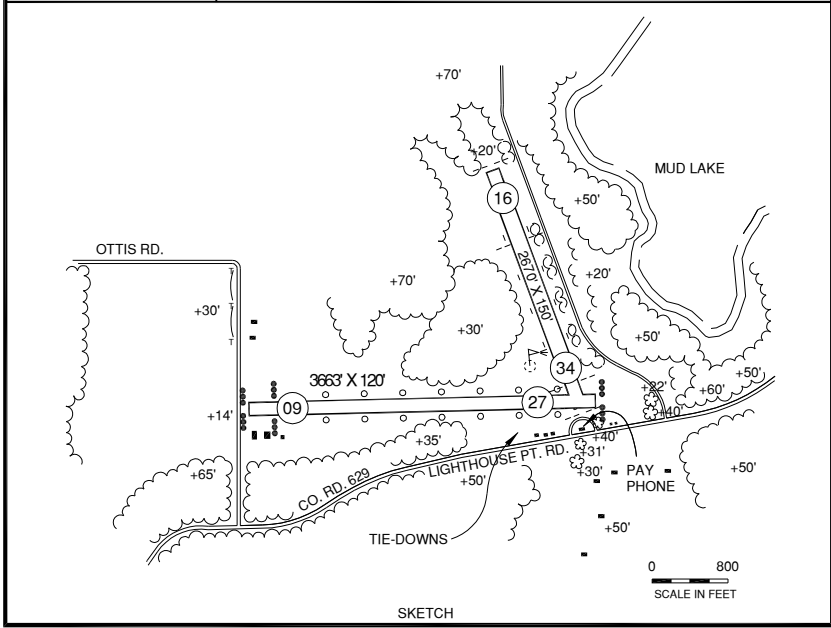
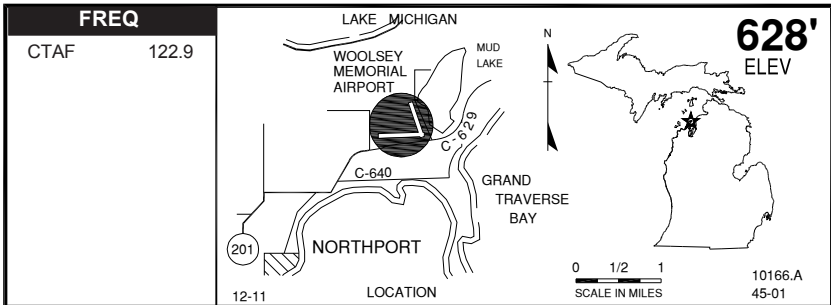
TRNSP: Rntl car (in town) on req

MEALS: 0.4 mi, in town 4.5 mi

RON: In town, 1.0 mi

- Admin bldg access—depress V, then simultaneous III-II, then I.
- Rwy 4/22 clsd Nov-Mar & when snw covered, except for ski equipped acft.
- Transient hgr avbl.

NORTHPORT, WOOLSEY MEM (5D5)



N

RWY LENGTH BEYOND DISPLACED THR
 09/ 3397' * 16/ 1870'
 27/ — * 34/ 2401'

COORDINATES
 45° 09.86'N
 085° 34.53'W

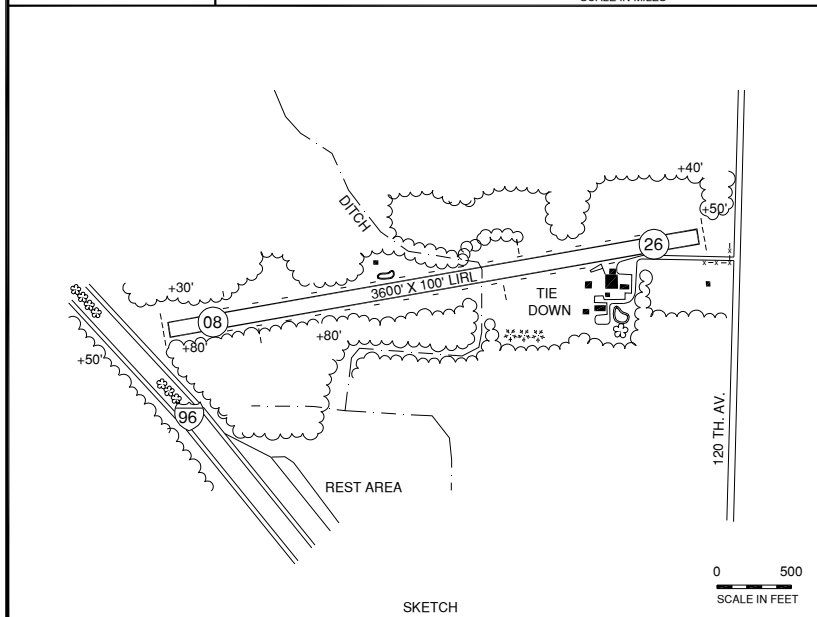
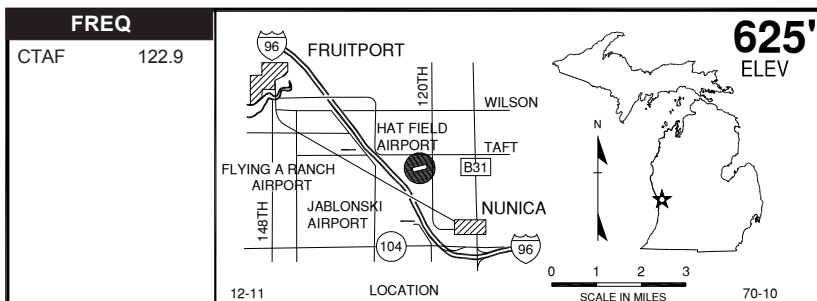
License
 Basic Utility

FM CITY: 3.0 mi NE
LGT: LIRL-PCL 5X CTAF.
MGR: Forbes Houghan
PH: 231-386-7541 (Mgr Res)
FBO: None
ATND: Unatnd, CLSD Nov-Mar & when snow covered.

NAV AIDS: 114.6 (TVC) 001° 30.0 NM to fld.
FUEL: None
RPR: None
WX: None
SNW RMVL: None
TRNSP: None
MEALS: In town, 3.0 mi
RON: In town, 3.0 mi

- Rwy 16/34 slopes up N to S, rwy 9/27 slopes up W to E.
- Deer & birds on & invof arpt.
- Admin bldg access-depress V, then simultaneous III-II, then I.
- Rwy 09/27 slopes up W-E; rwy 16/34 slopes up N-S.

NUNICA, HAT FIELD (5N7)



RWY LENGTH BEYOND DISPLACED THR

08/ 3200'
26/ 2400'

COORDINATES

43° 05.83'N
86° 05.68'W

License

Basic Utility

FM CITY: 2 mi NW

LGT: Not for public use.

MGR: William G. Hatfield
Nancy Hatfield, Asst

PH: 616-837-6979

FBO: Hatfield Spraying Svc & Turbine
Conversions, Ltd 616-837-6979

ATND: Ireg - arpt CLSD Nov-Mar

NAV AIDS: 115.2 (MKG) 223° 4.6 NM to fld

FUEL: None

RPR: None

WX: None

SNW RMVL: None

TRNSP: None

MEALS: In town, 2 mi

RON: 8.0 mi

- Extensive ag opns.
- Deer on & invof arpt.

