

WHAT KIND OF INFORMATION DO I NEED TO PROVIDE?

You need information about the following to apply:

- ◆ Income
- ◆ Social Security number
- ◆ Age
- ◆ Marital status
- ◆ Medical insurance (if you have other insurance)
- ◆ Living arrangements
- ◆ Proof of citizenship and identity

HOW DO I FIND OUT MORE ABOUT OTHER MEDICAID PROGRAMS?

For more information about other programs contact one of these agencies:

- ◆ Your local DHS office
- ◆ Your local health department



FOR MORE INFORMATION CONTACT:

PLAN FIRST!

Family Planning Program

PO Box 30412

Lansing, Michigan 48909

1-800-642-3195 (toll-free)

TTY 1-866-501-5656

www.michigan.gov/mdch

*Michigan Department
of Community Health*



Jennifer M. Granholm, Governor
Janet Olszewski, Director

For questions and/or problems, or help to translate, call the Beneficiary Help Line at 1-800-642-3195 (TTY 1-866-501-5656).
Spanish: Si necesita ayuda para traducir o entender este texto, por favor llame al telefono **1-800-642-3195** (TTY 1-866-501-5656)
Arabic: 1-800-642-3195 (TTY 1-866-501-5656)

إذا كان لديكم أي سؤال، يرجى الإتصال بخط المساعدة على الرقم المجاني ١-٨٠٠-٦٤٢-٣١٩٥

MDCH is an equal opportunity employer, services and program provider.

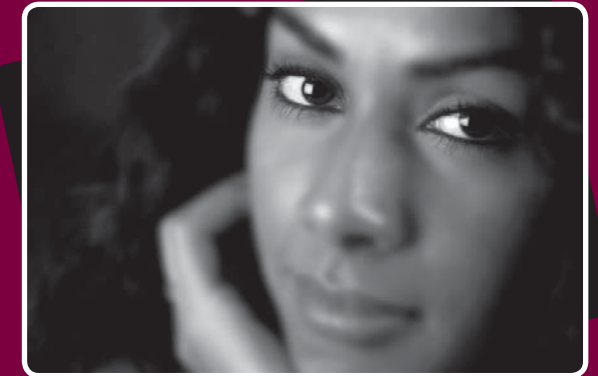
DCH-2840-MSA

11/07

200,000 copies printed at .042 cents each with a total cost of \$8,326.30

PLAN FIRST!

Free family planning services



Family planning helps you decide when to have a baby. This helps you and your babies stay healthy.

Family planning is more than just birth control. Family planning includes screening services that help find serious health problems, such as low blood iron, high blood pressure, and infections sooner.

WHAT'S COVERED?

- ◆ Office visits for family planning-related services
- ◆ Prescriptions for birth control
- ◆ Contraceptive (birth control) supplies and devices
- ◆ Lab tests
- ◆ Treatment of sexually transmitted infections
- ◆ Some sterilizations for women 21 years of age and older

Coverage for abortions and infertility are not covered under this program.



WHO IS ELIGIBLE?

“Plan First!” will provide services to women who:

- ◆ Are age 19 through 44 years
- ◆ Are US citizens or qualified immigrants
- ◆ Are Michigan residents
- ◆ Meet monthly family income limits
- ◆ Have a Social Security number or have applied for one
- ◆ Are not receiving Medicaid

HOW DO I GET MORE INFORMATION ABOUT PLAN FIRST! OR GET HELP APPLYING?

- ◆ For information or to get an application
 - Go to your local Department of Human Services (DHS) or Health Department
 - Call 1-800-642-3195
 - Go to the Michigan Department of Community Health web page - www.michigan.gov/mdch

This new program was approved for up to five years, beginning in July 2006.

HOW DO I APPLY FOR PLAN FIRST?

You must submit a signed application. You can authorize someone to act for you. You can apply for these benefits at your local Department of Human Services (DHS) or by mail. In addition, a number of community agencies, such as your local health department, offer help in applying for the “Plan First!” family planning program. You can print an application from our web site - www.michigan.gov/mdch, or apply online at - www.healthcare4mi.org.

Once you have filled out and signed your application, mail to:

Plan First!
PO Box 30412
Lansing, MI 48909

