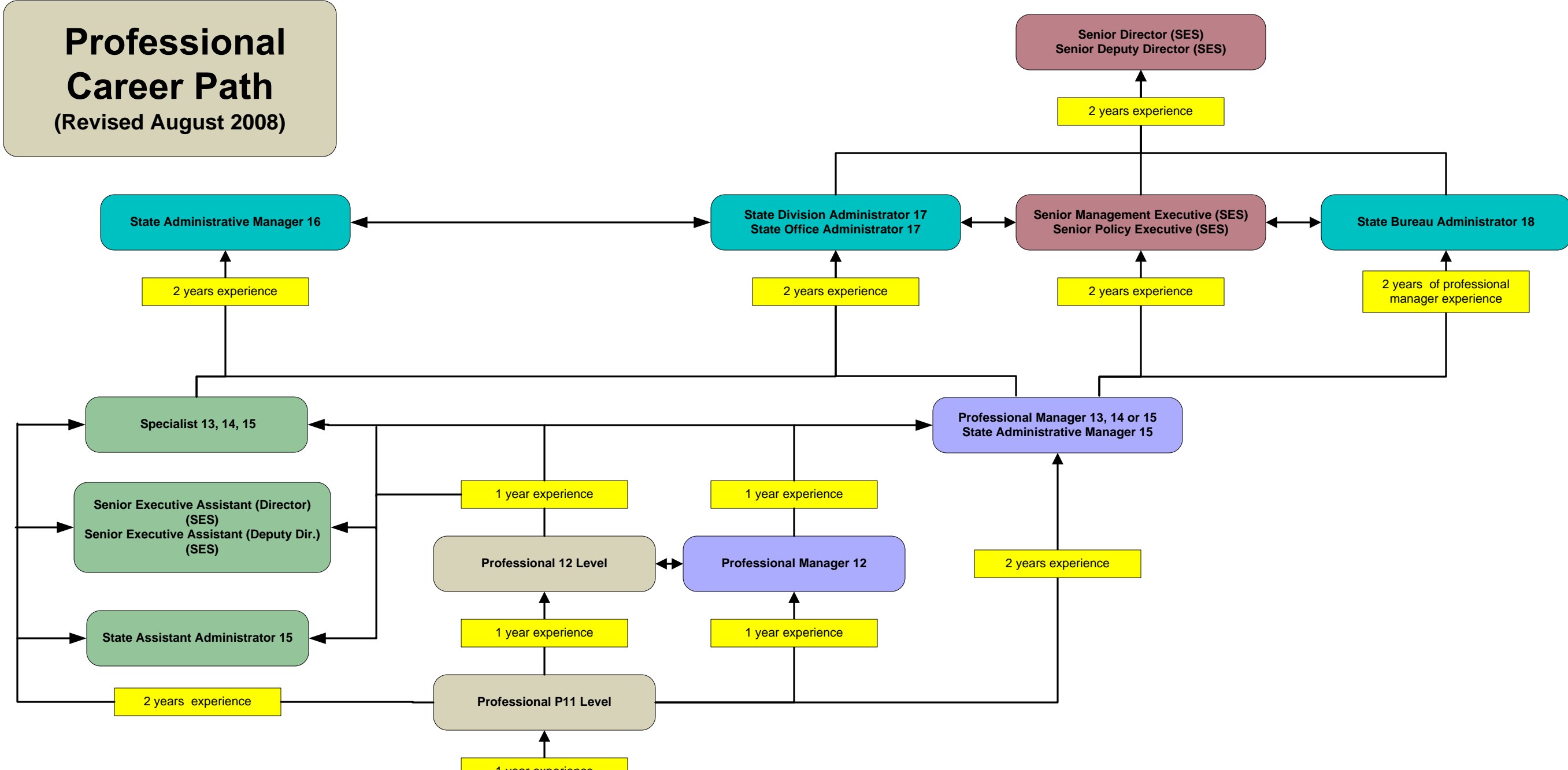


Professional Career Path

(Revised August 2008)



Minimum Departmental Trainee Experience Requirements*	
Administrative Support:	Two years of E10- or E11-level experience, OR Four years of advanced or supervisory 9-level or Senior Executive Management Assistant 9 experience, OR Two years of advanced or supervisory 10-level experience, OR One year of advanced or supervisory 11-level (or higher) experience
Business and Administrative:	Two years of E9- or E10-level experience, OR One year of advanced or supervisory 10-level (or higher) experience
Human Services:	Two years of E9- or 10-level paraprofessional** or nursing experience, OR Two years of E10- or E11- or supervisory 10-level experience, OR One year of advanced or supervisory 11-level (or higher) experience
Engineering and Scientific:	Two years of E10-, E11-level or supervisory 10-level experience, OR One year of advanced or supervisory 11-level (or higher) experience
Safety, Security and Regulatory	Two years of E11-level experience, OR Two years of advanced or supervisory 10-level experience, OR One year of advanced or supervisory 11-level (or higher) experience

*One year of college education may be substituted for one quarter of the required experience for up to one half of the required experience.
**Paraprofessional classifications are those requiring an associate's degree or two years of college.

Entry Level Requirement

Bachelor's Degree

Professional 9 Level

- Buyer 9 (Departmental Trainee)
- Civil Rights Representative 9 (Departmental Trainee)
- Departmental Analyst 9 (Departmental Trainee)
- Economic/Community Development Analyst (Departmental Trainee)
- Financial Analyst 9 (Departmental Trainee)
- Human Resources Developer 9 (Departmental Trainee)
- Occupational Safety Advisor 9 (Departmental Trainee)
- Personnel Management Analyst 9 (Departmental Trainee)
- Property Analyst 9 (Departmental Trainee)
- Regulation Officer 9 (Departmental Trainee)
- Rights Representative 9 (Departmental Trainee)
- Unemployment Insurance Analyst 9 (Departmental Trainee)