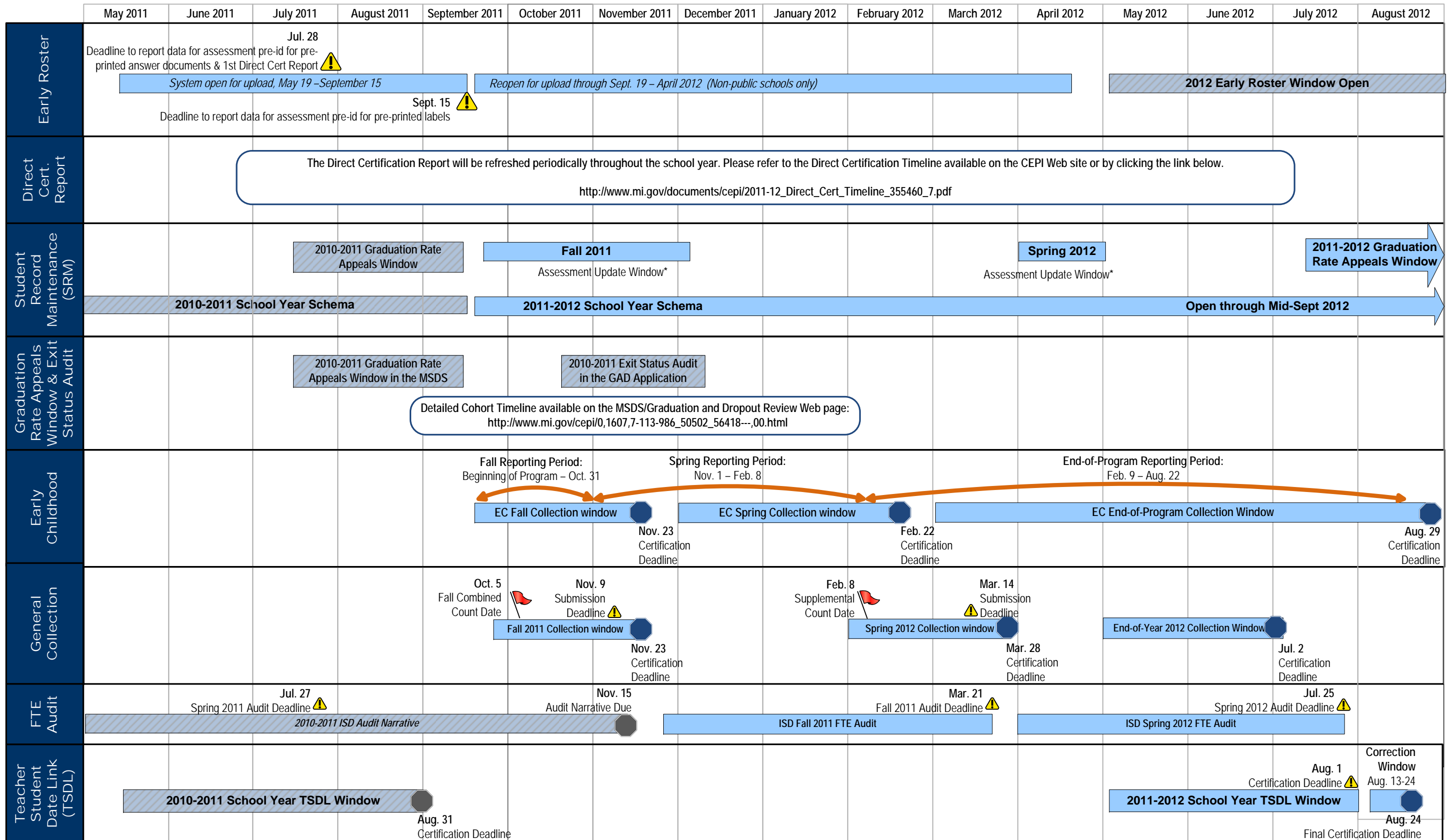




Michigan Student Data System 2011-12 Collection Dates



* During the assessment update window, districts may submit new enrollments, exits or updates to student records through the MSDS SRM Collection to make adjustments to their district's roster for MEAP, MI-Access, ELPA and MME. Please refer to the Michigan Department of Education, Bureau of Assessment and Accountability (BAA) Web site: <http://www.mi.gov/baa>