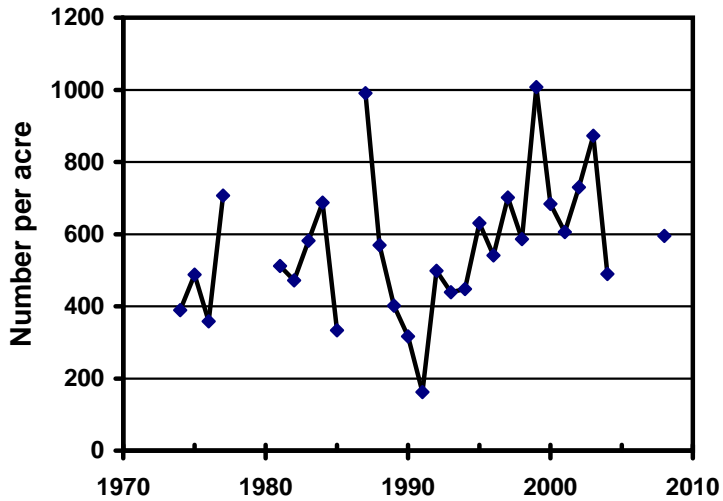
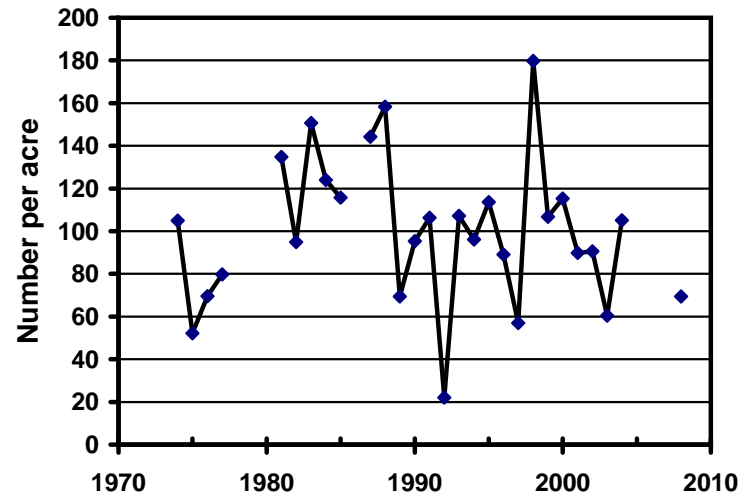


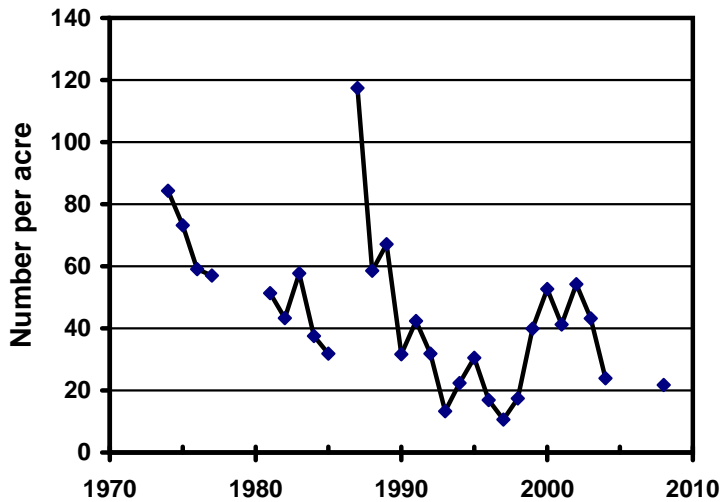
**BROOK + BROWN:** Fall number/acre of young fish from 1.0 - 4.9 inches long at the Smith Bridge population index station on the South Branch Au Sable River 1974 - 2008



**BROOK + BROWN:** Fall number/acre of fish 5.0 - 7.9 inches long at the Smith Bridge population index station on the South Branch Au Sable River 1974 - 2008



**BROOK + BROWN:** Fall number/acre of fish 8.0 - 11.9 inches long at the Smith Bridge population index station on the South Branch Au Sable River 1974 - 2008



**BROOK + BROWN:** Fall number/acre of fish 12 inches or longer at the Smith Bridge population index station on the South Branch Au Sable River 1974 - 2008

