



Michigan Department of Environmental Quality  
Waste and Hazardous Materials Division

## SOLID WASTE DISPOSAL AREA OPERATING LICENSE

This license is issued under the provisions of Part 115, Solid Waste Management, of the Natural Resources and Environmental Protection Act, 1994 PA 451, as amended, MCL 324.11501 et seq., and authorizes the operation of this solid waste disposal area (Facility) in the state of Michigan. This license does not obviate the need to obtain other authorizations as may be required by state law.

FACILITY NAME: Elk Run Landfill

LICENSEE/OPERATOR: Republic Services of Michigan V, LLC

FACILITY OWNER: Republic Services of Michigan V, LLC

PROPERTY OWNER: Republic Services of Michigan V, LLC

FACILITY TYPE(S): Municipal Solid Waste Landfill

FACILITY ID NUMBER: 391216

COUNTY: Presque Isle

LICENSE NUMBER: 9171

ISSUE DATE: November 19, 2007

EXPIRATION DATE: November 19, 2012

FACILITY DESCRIPTION: The Elk Run Landfill, a Municipal Solid Waste Landfill, consists of 99.1 acres located in the NE 1/4, of Section 5, T33N, R2E, Allis Township, Presque Isle County, Michigan, as identified in Attachment A and fully described in this license.

AREA AUTHORIZED FOR DISPOSAL OF SOLID WASTE: Cell A East (4.0 acres), Cell B East (3.7 acres), Cell D East (3.5 acres), Cell E (3.8 acres), and Cell F (2.0 acres).

RESPONSIBLE PARTY: Mr. Ken Schaedig, General Manager  
Republic Services of Michigan V, LLC  
20667 Five Mile Highway  
Onaway, Michigan 49765  
Phone 989-733 6796

**RENEWAL OPERATING LICENSE:** This License Number 9171 supersedes and replaces Solid Waste Disposal Area License Number 9127 issued to Republic Services of Michigan V, LLC on November 7, 2005.

This license is subject to revocation by the Director of the Michigan Department of Environmental Quality if the Director finds that this Facility is not being constructed or operated in accordance with the approved plans, the conditions of a permit or license, Part 115, or the rules promulgated under Part 115. Failure to comply with the terms and provisions of this license may result in legal action leading to civil and/or criminal penalties pursuant to Part 115. This license shall be available through the licensee during its term and remains the property of the Director.

**THIS LICENSE IS NOT TRANSFERABLE.**

Steven R. Sliver, Chief, Storage Tank and Solid Waste Section  
Waste and Hazardous Materials Division

Licensee: Republic Services of Michigan LLC  
Facility Name: Elk run Landfill  
Operating License Number: 9171  
Issue Date: November 19, 2007

f. Perpetual Care Fund Agreement, established as an escrow account, signed by Mr. David Barclay, Vice-President, Republic Services of Michigan V, LLC on January 19, 1999, was executed by the MDEQ on April 8, 1999.

g. Financial Assurance.

i. Financial Assurance Required:

The amount of financial assurance required for this Facility was calculated based on the calculation worksheet form EQP 5507A entitled, "Form A Financial Assurance Required," and is \$3,321,358.60.

The Facility has provided financial assurance totaling \$3,321,359.00, based on the requirements of Section 11523 of Part 115, consisting of a combination of the Perpetual Care Fund established under Section 11525, bonds, and the financial capability of the Applicant as evidenced by a financial test. The financial assurance mechanisms used by the Facility are summarized below in items ii and iii, respectively.

ii. Financial Assurance Provided Via a Perpetual Care Fund:

- (1) The amount of the required financial assurance can be reduced pursuant to Section 11524 of Part 115, if the amount of money in the Perpetual Care Fund plus the amount of the reduced financial assurance equals the amount of financial assurance required in Section 11523 and is approved by the MDEQ.
- (2) The Perpetual Care Fund Agreement statement showed a balance of \$434,554.00 in the Facility's Perpetual Care Fund as of June 30, 2007. Of this amount, the MDEQ has granted the request to use \$434,554.00 toward the total amount of financial assurance required.

iii. Financial Assurance provided via bond:

The following financial assurance has been received from the Applicant to meet the amount of financial assurance required:

Trust Fund	\$2,886,805.00
Total Amount Received:	\$2,886,805.00

iv. Financial Assurance Updates Required:

For Type II landfills, the financial assurance cost estimates of closure and post-closure activities must be updated annually and the corresponding requisite amount of financial assurance must be adjusted annually for the costs of inflation. The corresponding financial assurance, as adjusted for inflation and other factors, is due on November 19, 2008, and each year thereafter.

8. The following documents approved with Construction Permit Number(s) 2065 and 0389 issued to Elk Run Landfill on July 7, 1992 and June 18, 2001, are incorporated in this license by reference:

- a. Allis Park (Elk Run Landfill) Permit Application Package, dated May 29, 1992.
- b. Report of Hydrogeological Investigation for proposed Allis Park Landfill, dated June 1992.
- c. Closure Plan, dated 1997.
- d. Post Closure Care Plan, dated 1997.
- e. Application for Permit Modification, dated February 2001.
- f. Engineering Plans, dated February 2001, revisions dated May 2001.

Licensee: Republic Services of Michigan, LLC  
 Facility Name: Elk run Landfill  
 Operating License Number: 9171  
 Issue Date: November 19, 2007

18. Leakage Control Criteria:

The active portions of the unit(s) authorized to receive waste by this license is a monitorable unit(s) designed with a double-liner system which is in compliance with the provisions of R 299.4422(3) and which is capable of detecting and collecting leakage through the primary composite liner. The action flow rate for each unit containing a secondary collection system is Cell A, Cell B, Cell E, and Cell F; 25 gallons/acre/day; Cell C - East and Cell D - East 200 gallons/acre/day.

19. **VARIANCES:** None.

20. **SPECIAL CONDITIONS:**

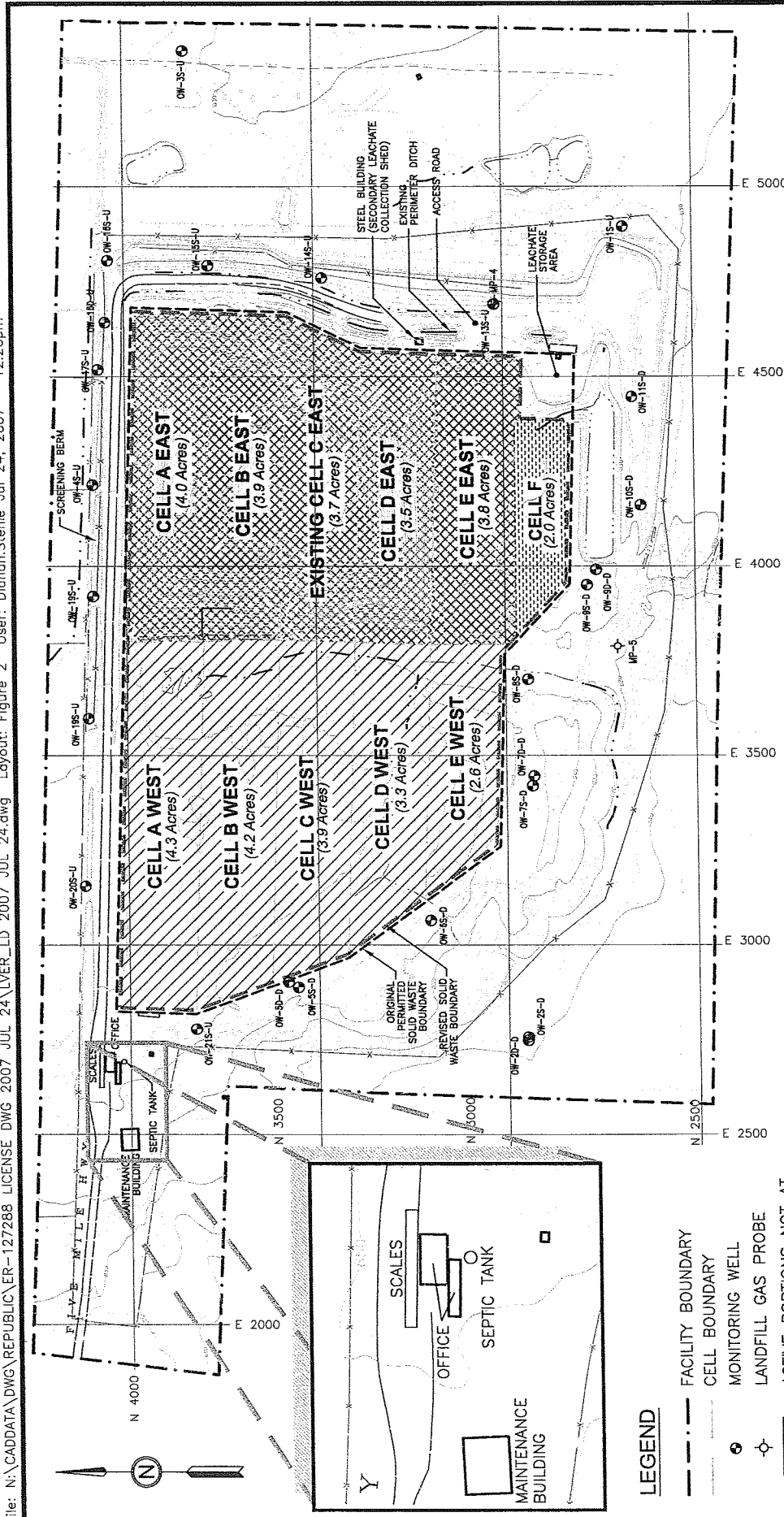
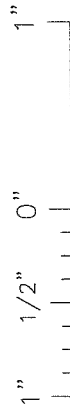
a. The licensee shall place a compacted layer of not less than six inches of earthen material, unless an exemption is granted, of suitable cover material on all exposed solid waste by the end of each working day, as required by R 299.4429(l). Suitable cover shall be either uncontaminated soil or an alternate cover approved by the Waste and Hazardous Materials Division, listed in Item i below. Alternate cover shall be restricted as indicated in Item ii and applied as per the approved operational plan submitted by the licensee.

i. Approved alternate cover shall be any of the following:

<u>Product/Waste Material</u>	<u>Source</u>	<u>Monthly Volume</u>
1. Paper Mill Sludge	Great Lakes Tissue	---
2. Fly Ash	Decorative Panels Inc.	---
3. Con Cover	Con Cover	---
4. Fabrisoil	Fabrisoil	---

ii. The above materials are approved for daily cover when used in the following manner:

- (1) The licensee shall use the material as daily cover only. The material cannot be used for road building or fill in other areas of the Facility's operation.
- (2) The licensee shall maintain written authorization on site, from the generator of the material, to use the material as daily cover.
- (3) The licensee shall only stockpile material in a secure manner within the active cell.
- (4) This approval does not preclude the licensee from disposing of the material as waste in the active fill area instead of using the material as daily cover.
- (5) This approval shall immediately become void upon documentation by the MDEQ that the alternate cover is not being used in accordance with listed conditions, that the alternate cover is not providing the necessary protection, or that the process producing the waste has changed.
- (6) If the material does not meet the guidelines from Attachment 2 of Operational Memo 115-10 Revision 1 for non-volatiles, the licensee shall ensure that fugitive dust emissions from this material do not occur. Acceptable methods to assure fugitive emissions do not occur are:
  - (a) Implement a schedule to wet down material; or
  - (b) Cover the material with a tarp; or
  - (c) Apply an approved foam or other appropriate commercial dust control product.
- (7) This approval to use alternate cover shall expire upon the expiration of this operating license.



**LEGEND**

- FACILITY BOUNDARY
- - - CELL BOUNDARY
- ⊙ MONITORING WELL
- ⊕ LANDFILL GAS PROBE
- ▨ ACTIVE PORTIONS NOT AT FINAL GRADE
- ▧ CONSTRUCTED CERTIFIED WITH THIS APPLICATION (WITH FINANCIAL ASSURANCE)
- ▩ UNCONSTRUCTED WITHOUT FINANCIAL ASSURANCE
- ~ DITCH OR STREAM
- LAKE OR POND

**NOTES:**

1. PHOTOGRAMMETRIC MAPPING PROVIDED BY: AEROTRONICS, INC., DATE OF PHOTOGRAPHY, 04/19/06.
2. TOPOGRAPHY REFERENCED TO THE USGS DATUM OF MEAN SEA LEVEL.
3. SCALE HOUSE LOCATION PROVIDED BY PORTER'S SURVEY, P.C., FILE #33R2153, NOVEMBER 25, 2002.

<b>Shaw</b> The Shaw Group, Inc. 14166 Farmington Road Livonia, Michigan 48154 (734) 524-9610		TITLE <b>SITE MAP</b>	
CLIENT <b>REPUBLIC SERVICES OF MICHIGAN V, LLC</b>		DRWN DGS	CHKD SFL
LOCATION ELK RUN LANDFILL Presque Isle County Onaway, Michigan		APPRVD BY	REVISION DATE
		PROJECT NO.	ATTACHMENT A
		127288	07/24/07

