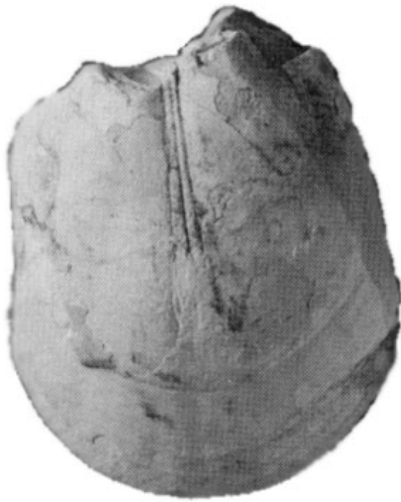


Michigan Fossil Flashcards - A



Michigan Department of Environmental Quality
Geological and Land Management Division
P. O. Box 30256
Lansing, MI 48909-7756



Michigan Fossil Flashcards - A

<p>BRACHIOPOD, invertebrate,</p> <p>Position on poster A2</p> <p>Genus and species: <i>Mucrospifier profundus</i></p> <p>Geologic formation: Silica formation</p> <p>Geologic age: Devonian age, 360 to 410 million years ago</p> <p>Location: Washtenaw County</p> <p>Size: 50 mm, calcite replacement,</p> <p>From the R. Milstein collection</p>	<p>BRACHIOPOD, invertebrate,</p> <p>Position on poster A1</p> <p>Genus and species: <i>Pentamerus</i> sp.</p> <p>Geologic formation: Cordell dolomite</p> <p>Geologic age: Silurian age, 410 to 440 million years ago</p> <p>Location: Chippewa County</p> <p>Size: 65 mm, internal cast or steinkern,</p> <p>om the R. Elowski collection</p>
<p>CORAL or COLONIAL CORAL, invertebrate,</p> <p>Position on poster A4</p> <p>Genus and species: <i>Syringopora</i> sp.</p> <p>Geologic formation: Cordell dolomite</p> <p>Geologic age: Silurian age, 410 to 440 million years ago</p> <p>Location: Chippewa County</p> <p>Size: 125 mm, siliceous replacement,</p> <p>From the R. Milstein collection</p>	<p>TRILOBITE, invertebrate,</p> <p>Position on poster A3</p> <p>Genus and species: <i>Phacops rana</i></p> <p>Geologic formation: Silica formation</p> <p>Geologic age: Devonian age, 360 to 410 million years ago</p> <p>Location: Washtenaw County</p> <p>Size: 70 mm, calcite replacement,</p> <p>From the S. Wilson collection</p>

Print or copy pictures and corresponding text front to back (duplex).

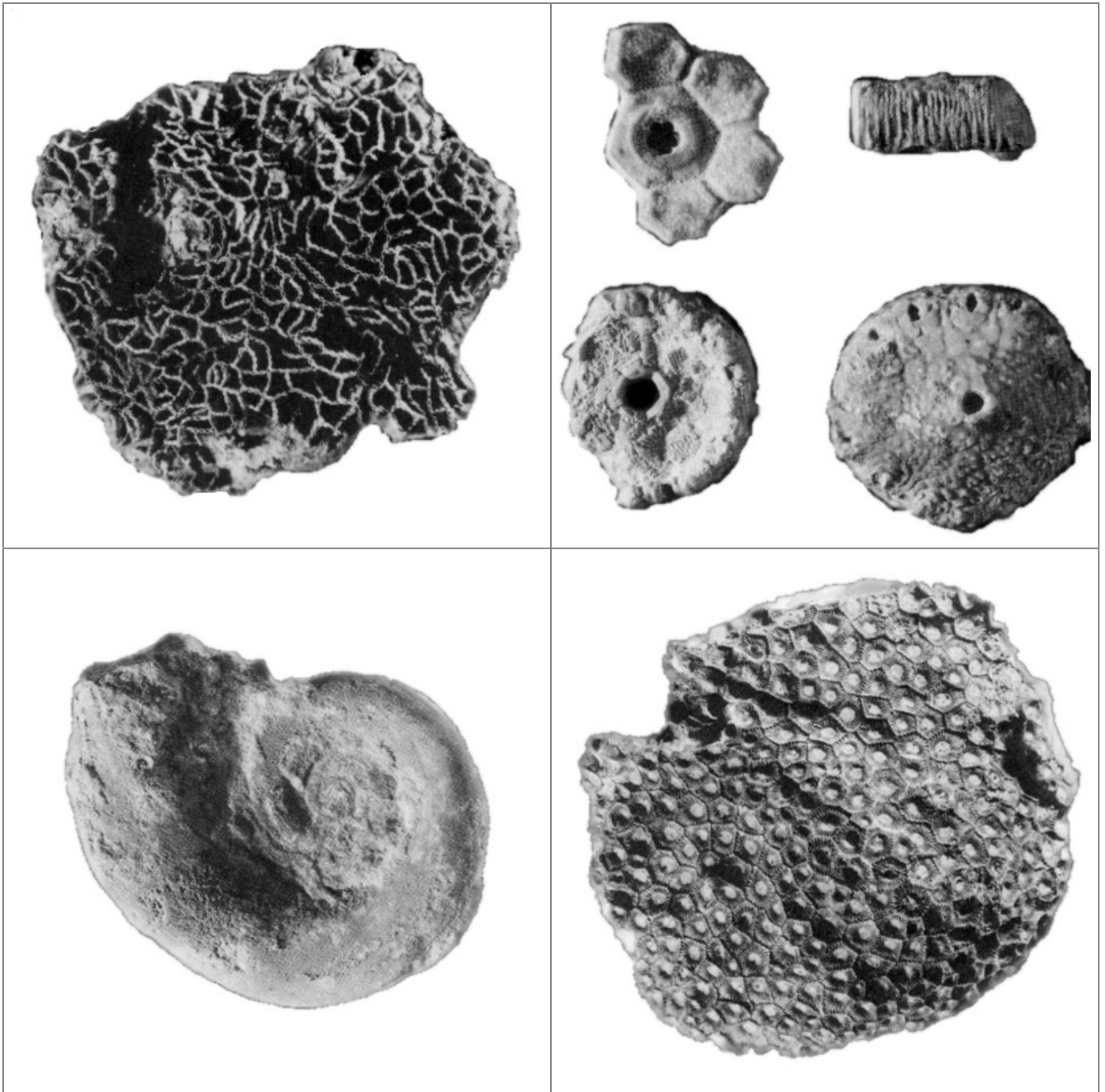
Cut along the grid outlining the illustrations.

You now have a set "Michigan Fossil Flashcards". (collect all 24)

Flashcards can be made using a printer or copier

If you can a heavy or thick paper stock, the cards will hold up better.

Michigan Fossil Flashcards - B



Michigan Department of Environmental Quality
Geological and Land Management Division
P. O. Box 30256
Lansing, MI 48909-7756



Michigan Fossil Flashcards - B

<p>CRINOID pieces, invertebrate, Position on poster B2 Genus and species: <i>Megistocrinus</i> sp. ? Geologic formation: Alpena limestone Geologic age: Devonian age, 360 to 410 million years ago Location: Alpena County Size: 30 mm (lower right), calcite replacement, From the GSD collection</p>	<p>CORAL or CHAIN CORAL, invertebrate, Position on poster B1 Genus and species: <i>Halysites</i> sp. Geologic formation: Cordell dolomite Geologic age: Silurian age, 410 to 440 million years ago Location: Chippewa County Size: 110 mm, siliceous replacement, From the R. Milstein collection</p>
<p>CORAL or COLONIAL CORAL Petoskey Stone, invertebrate, Position on poster B4 Genus and species: <i>Hexagonaria percarinata</i> Geologic formation: Alpena Limestone Geologic age: Devonian age, 360 to 410 million years ago Location: Charlevoix County Size: 200 mm, calcite replacement, From the R. Milstein collection</p>	<p>SNAIL or GASTROPOD, invertebrate, Position on poster B3 Genus and species: genus not determined Geologic formation: Cordell dolomite Geologic age: Silurian age, 410 to 440 million years ago Location: Chippewa County Size: 75 mm, internal cast or steinkern, From the GSD collection</p>

Print or copy pictures and corresponding text front to back (duplex).

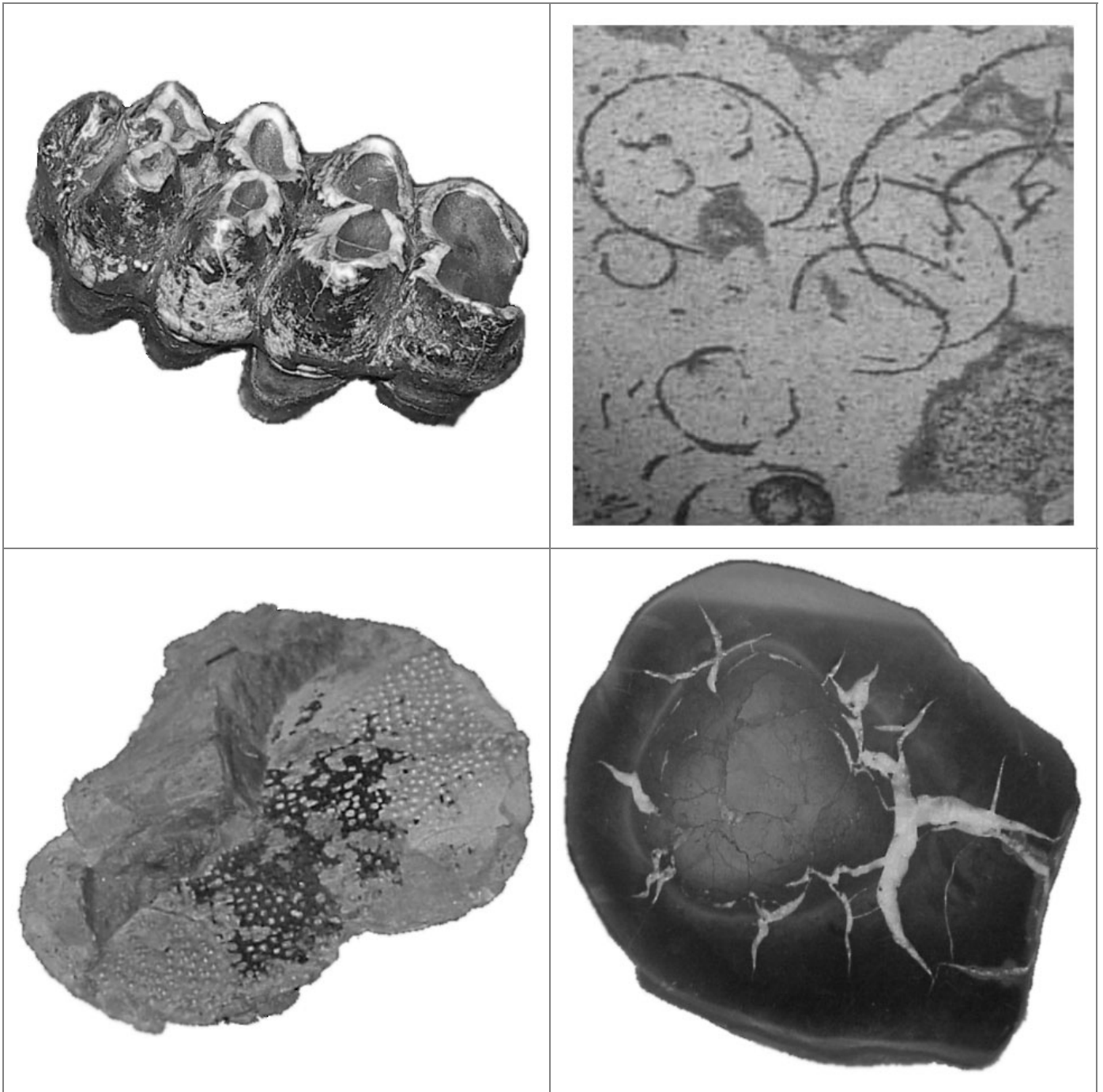
Cut along the grid outlining the illustrations.

You now have a set "Michigan Fossil Flashcards". (collect all 24)

Flashcards can be made using a printer or copier

If you can a heavy or thick paper stock, the cards will hold up better.

Michigan Fossil Flashcards - C



Michigan Department of Environmental Quality
Geological and Land Management Division
P. O. Box 30256
Lansing, MI 48909-7756



Michigan Fossil Flashcards - C

<p>EUCARYOTIC algae filaments, plant,</p> <p>Position on poster C2</p> <p>Genus and species: <i>Grypania spiralis</i></p> <p>Geologic formation: Negaunee Iron Formation</p> <p>Geologic age: Precambrian age, 2,300 million years ago</p> <p>Location: Marquette County</p> <p>Size: large loop about 20 mm, oldest macrofossil,</p> <p>From the GSD collection</p>	<p>MASTODON Tooth, vertebrate,</p> <p>Position on poster C1</p> <p>Genus and species: <i>Mammut americanum</i></p> <p>Geologic formation: Glacial deposit</p> <p>Geologic age: Quaternary age, 1.8 to 0.0 million years ago</p> <p>Location:</p> <p>Size: 200 mm long, the "Michigan State Fossil",</p> <p>From the Central Michigan University Rowe Museum collection</p>
<p>Septarian nodule, pseudofossil,</p> <p>Position on poster C4</p> <p>Genus and species: <i>pseudo fossil</i></p> <p>Geologic formation:</p> <p>Geologic age:</p> <p>Location: Ottawa County</p> <p>Size: 75 mm, Looks like a fossil, but it is not.</p> <p>From the S. Wilson collection</p>	<p>Fish plate, vertebrate,</p> <p>Position on poster C3</p> <p>Genus and species: genus not determined</p> <p>Geologic formation: Alpena Limestone</p> <p>Geologic age: Devonian age, 360 to 410 million years ago</p> <p>Location: Alpena County</p> <p>Size: 200 mm at widest point, calcite replacement,</p> <p>From the S. Wilson collection</p>

Print or copy pictures and corresponding text front to back (duplex).

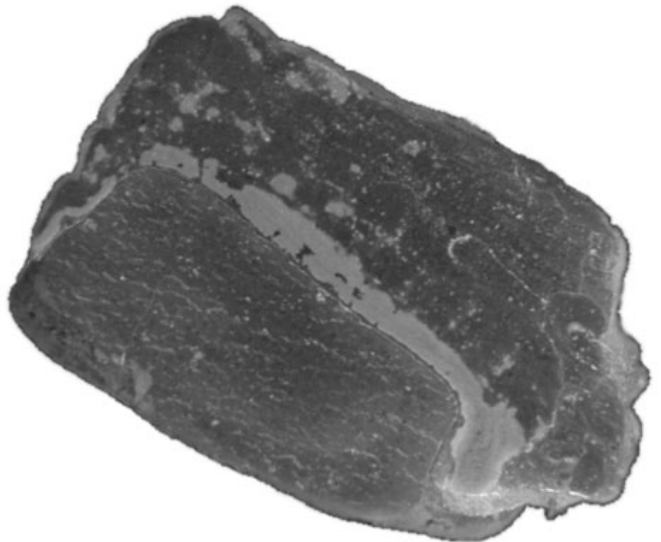
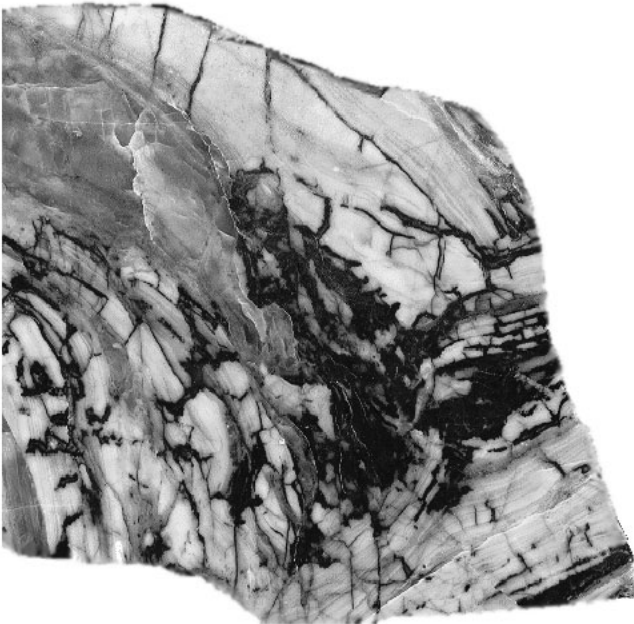
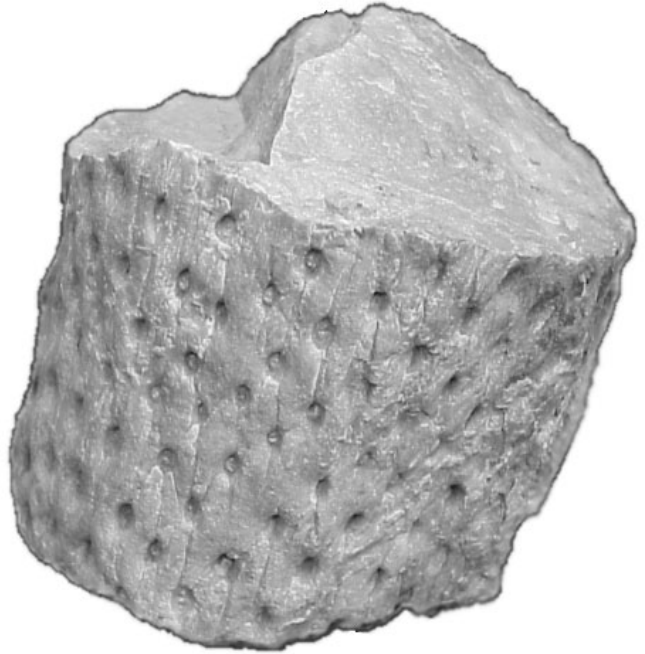
Cut along the grid outlining the illustrations.

You now have a set "Michigan Fossil Flashcards". (collect all 24)

Flashcards can be made using a printer or copier

If you can a heavy or thick paper stock, the cards will hold up better.

Michigan Fossil Flashcards - D



Michigan Department of Environmental Quality
Geological and Land Management Division
P. O. Box 30256
Lansing, MI 48909-7756



Michigan Fossil Flashcards - D

PLANT root section, plant,

Position on poster D2

Genus and species: *Stigmaria*, genus not determined

Geologic formation: Saginaw Formation

Geologic age: Pennsylvanian age, 320 to 285 million years ago

Location: Eaton County

Size: 150 mm in diameter, internal cast,

From the T. Godbold collection

BANDED IRON FORMATION (BIF), from fossils,

Position on poster D1

Genus and species: result of *Grypania* and others

Geologic formation: Banded Iron Formation

Geologic age: Precambrian age, 1,800 to 2,500 million years ago

Location: Marquette County

Size: 600 mm, from the rock walkway at the,
from the Eddy Discovery Center, Rock Walkway collection

Algal stromatolite, plant,

Position on poster D4

Genus and species: *Collenia undosa*

Geologic formation: Copper Harbor Conglomerate

Geologic age: Precambrian age, 1,100 million years ago

Location: Keweenaw County

Size: 100 mm,

From the S. Wilson collection

Kona Dolomite, plant,

Position on poster D3

Genus and species: Algal in origin

Geologic formation: Kona Formation

Geologic age: Precambrian age, 2,200 million years ago

Location: Marquette County

Size: 150 by 200 mm, metamorphosed to a marble,

From the GSD collection

Print or copy pictures and corresponding text front to back (duplex).

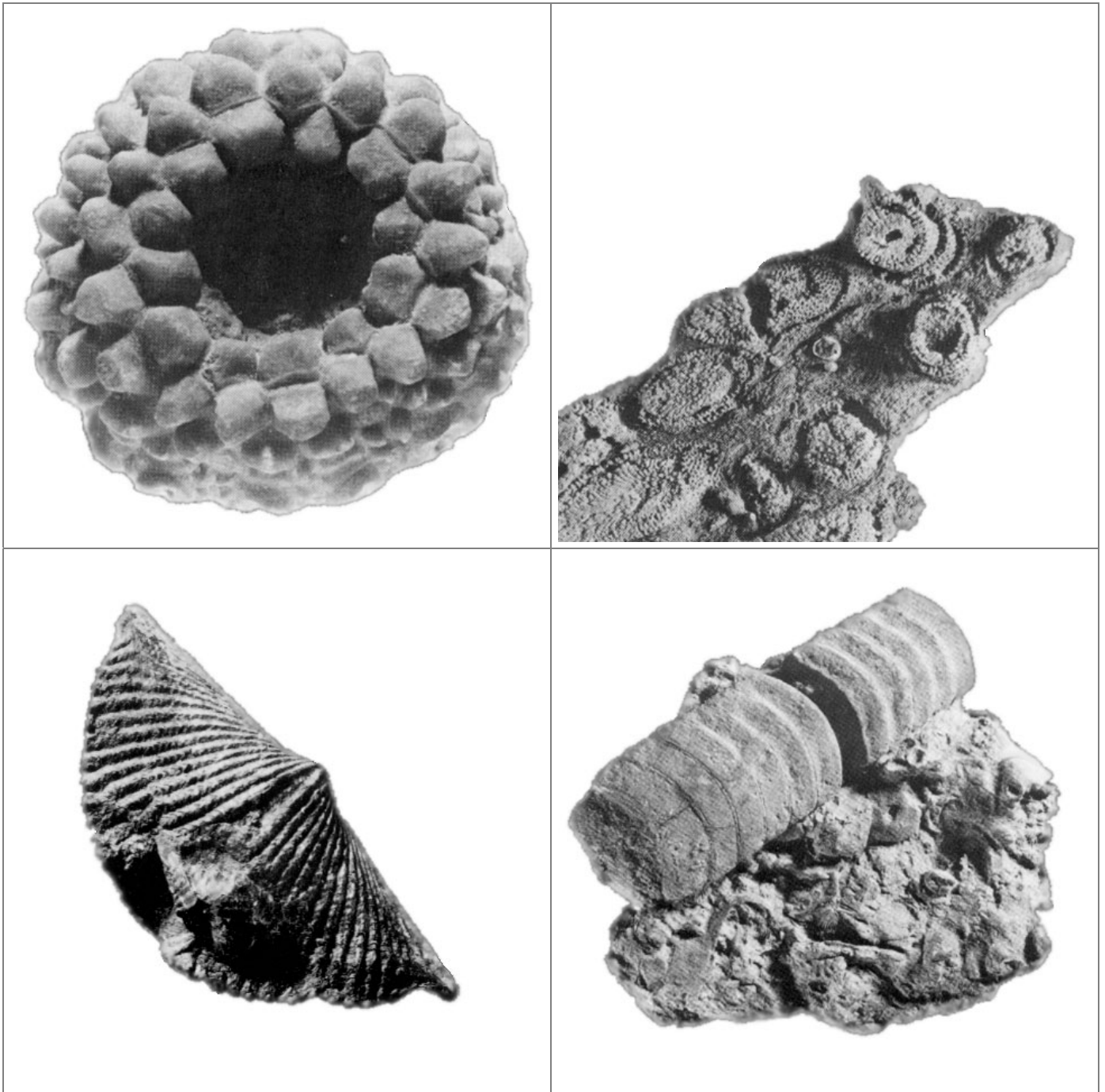
Cut along the grid outlining the illustrations.

You now have a set "Michigan Fossil Flashcards". (collect all 24)

Flashcards can be made using a printer or copier

If you can a heavy or thick paper stock, the cards will hold up better.

Michigan Fossil Flashcards - E



Michigan Department of Environmental Quality
Geological and Land Management Division
P. O. Box 30256
Lansing, MI 48909-7756



Michigan Fossil Flashcards - E

CORAL or COLONIAL CORAL, invertebrate,

Position on poster E1

Genus and species: *Favosites* sp.

Geologic formation: Cordell dolomite

Geologic age: Silurian age, 410 to 440 million years ago

Location: Chippewa County

Size: 70 mm, siliceous replacement,

From the GSD collection

CRINOID, invertebrate,

Position on poster E2

Genus and species: *Megistocrinus concava*

Geologic formation: Thunder Bay limestone

Geologic age: Devonian age, 360 to 410 million years ago

Location: Alpena County

Size: 30 mm, calcite replacement,

From the S. Wilson collection

CEPHALOPOD, invertebrate,

Position on poster E4

Genus and species: *Michelinoceras* sp.

Geologic formation: Ogontz limestone

Geologic age: Ordovician age, 440 to 505 million years ago

Location: Alger County

Size: 100 mm, internal cast or steinkern,

From the R. Milstein collection

BRACHIOPOD, invertebrate,

Position on poster F2

Genus and species: *Mucrospifler mucronatus*

Geologic formation: Silica formation

Geologic age: Devonian age, 360 to 410 million years ago

Location: Washtenaw County

Size: 90 mm, calcite replacement,

From the R. Milstein collection

Print or copy pictures and corresponding text front to back (duplex).

Cut along the grid outlining the illustrations.

You now have a set "Michigan Fossil Flashcards". (collect all 24)

Flashcards can be made using a printer or copier

If you can a heavy or thick paper stock, the cards will hold up better.

Michigan Fossil Flashcards - F



Michigan Department of Environmental Quality
Geological and Land Management Division
P. O. Box 30256
Lansing, MI 48909-7756



Michigan Fossil Flashcards - F

CLAM or PELECYPOD, invertebrate,

Position on poster E3

Genus and species: *Megalomus canadensis*

Geologic formation: Cordell dolomite

Geologic age: Silurian age, 410 to 440 million years ago

Location: Chippewa County

Size: 60 x 75 mm, internal cast or steinkern,

From the GSD collection

BRYOZOAN, invertebrate,

Position on poster F1

Genus and species: *Sulcoretepora deissi*

Geologic formation: Silica formation

Geologic age: Devonian age, 360 to 410 million years ago

Location: Washtenaw County

Size: 25 mm, calcite replacement,

From the S. Wilson collection

STROMATOPOROID, invertebrate,

Position on poster F3

Genus and species: genus not determined

Geologic formation: Alpena Limestone

Geologic age: Devonian age, 360 to 410 million years ago

Location: Charlevoix County

Size: 125 mm, calcite replacement,

From the GSD P041 collection

CORAL or COLONIAL CORAL, invertebrate,

Position on poster F4

Genus and species: *Favosites* sp.

Geologic formation: Alpena Limestone

Geologic age: Devonian age, 360 to 410 million years ago

Location: Charlevoix County

Size: 100 mm (shown), siliceous replacement,

From the R. Reszka collection

Print or copy pictures and corresponding text front to back (duplex).

Cut along the grid outlining the illustrations.

You now have a set "Michigan Fossil Flashcards". (collect all 24)

Flashcards can be made using a printer or copier

If you can a heavy or thick paper stock, the cards will hold up better.