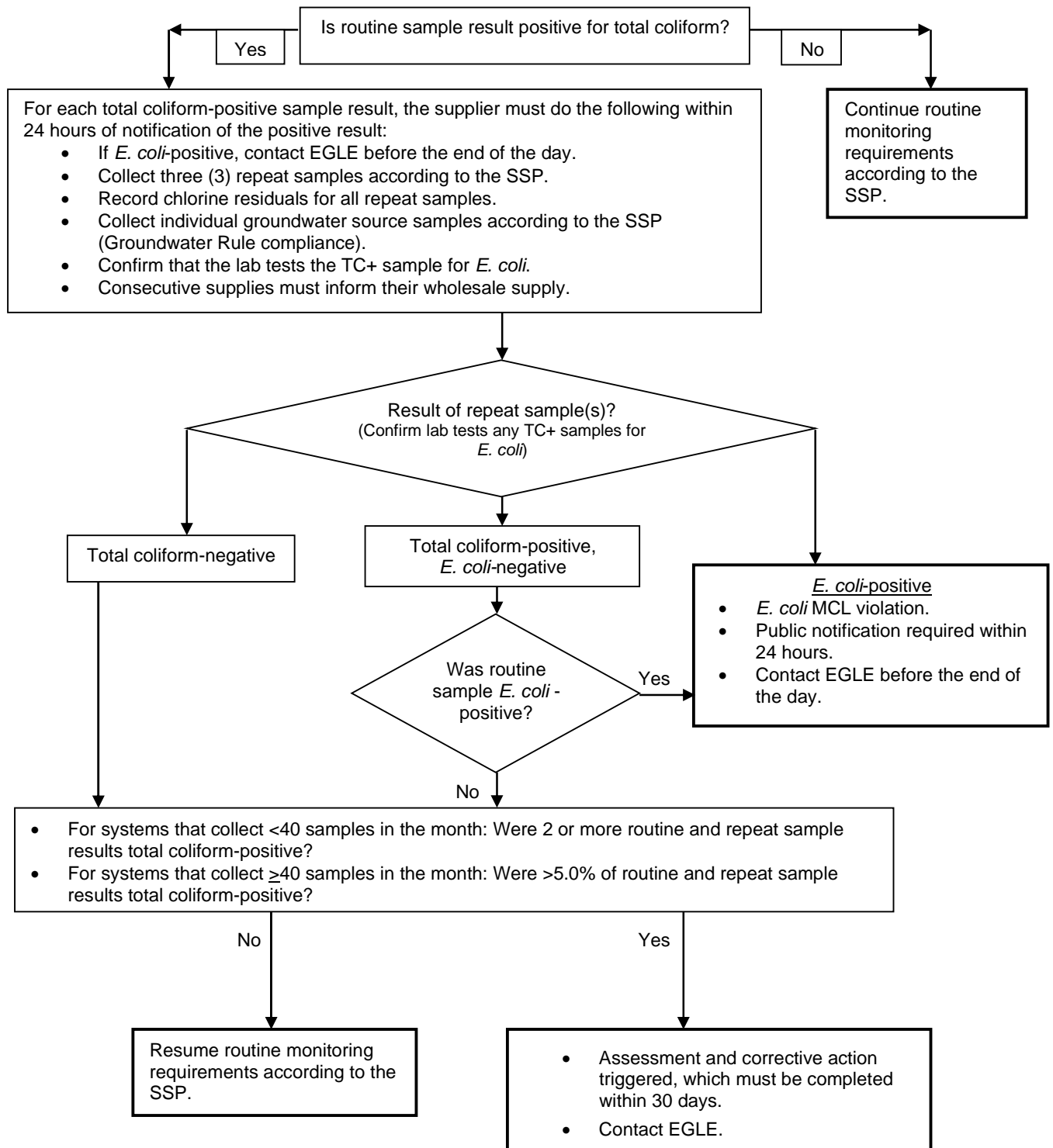




REVISED TOTAL COLIFORM RULE: ROUTINE POSITIVE SAMPLE FLOWCHART (FOR COMMUNITY WATER SUPPLIES)



- Contact EGLE if you have questions or are unsure of how to proceed.
- Contact Pollution Emergency Alerting System (PEAS) if notified of an *E. coli*-positive after-hours.
- PEAS: 1-800-292-4706
- SSP = sample siting plan
- TC+ = total coliform-positive
- MCL = Maximum Contaminant Level