

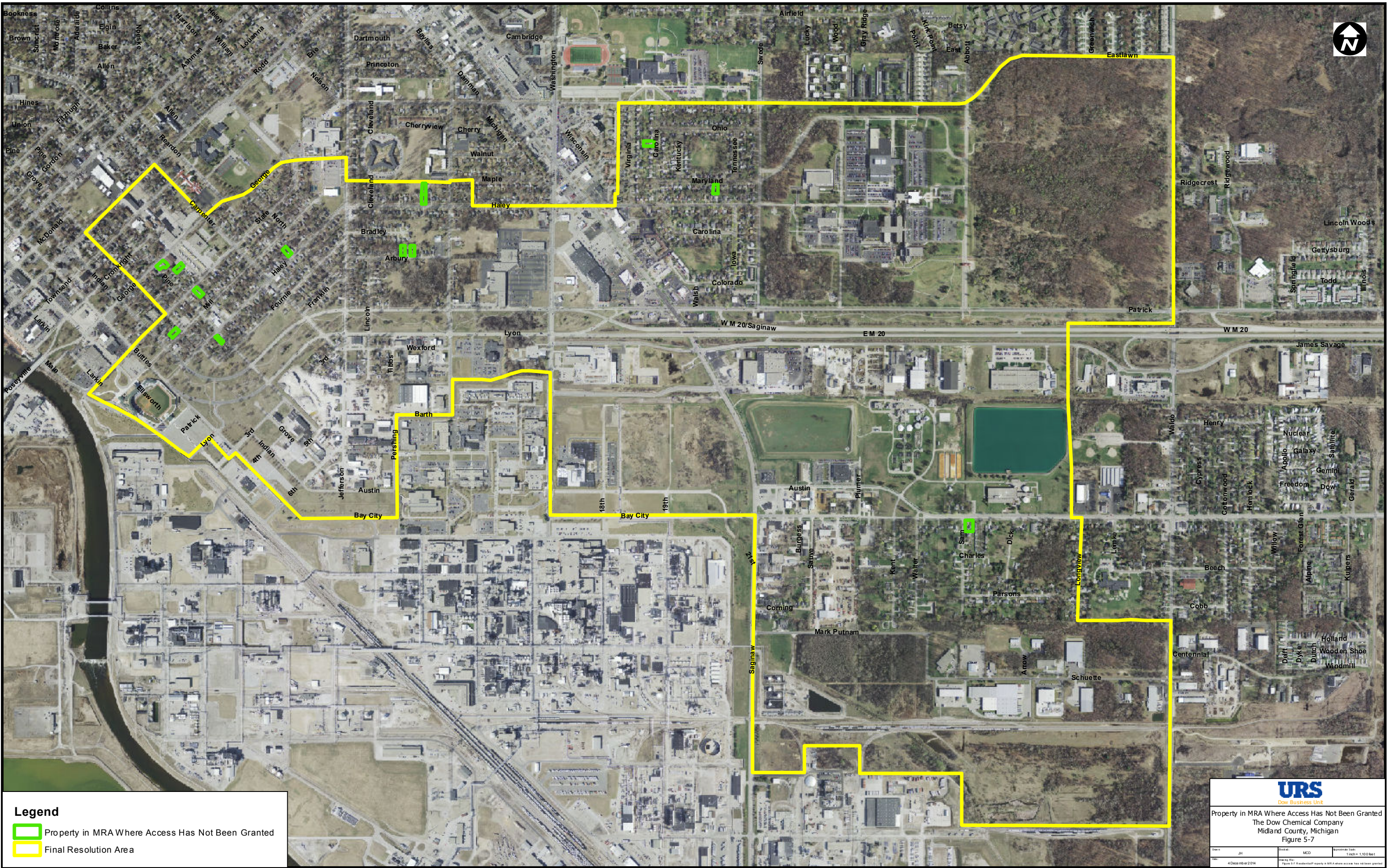
Legend

- Non-Residential Property in MRA apart from Neighborhoods with Soils Less than Generic MDEQ Cleanup Criteria, but may be Greater than SSAL
- Final Resolution Area



Non-Residential Property in MRA apart from Neighborhoods with Soils Less than Generic MDEQ Cleanup Criteria
 The Dow Chemical Company
 Midland County, Michigan
 Figure 5-6

Drawn: JH	Checked: MCD	Approximate Scale: 1 inch = 1,100 feet
Date: 4 December 2014	Revised For: Figure 5-6 Non-Res Prop in MRA apart from Neighborhoods	



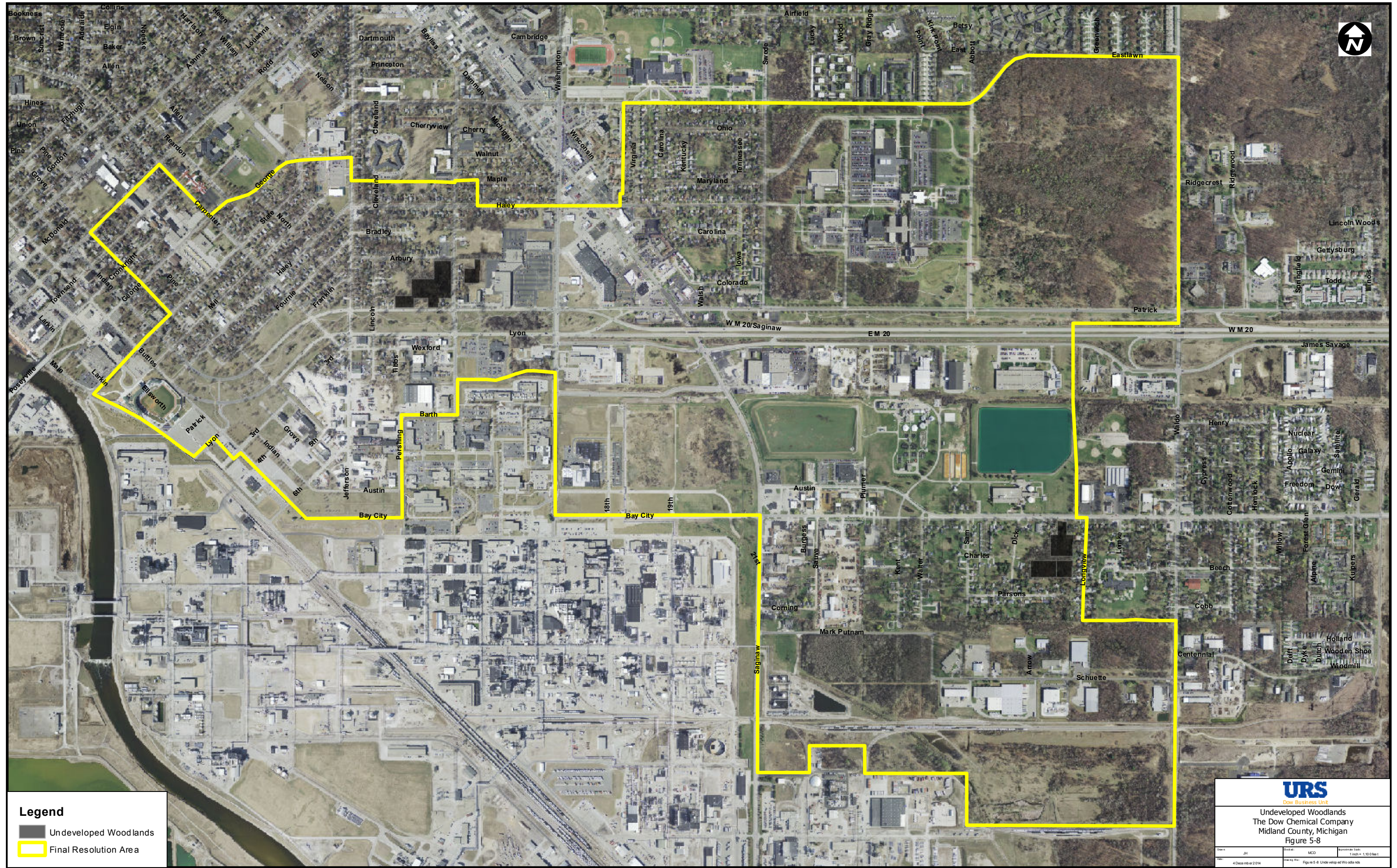
Legend

- Property in MRA Where Access Has Not Been Granted
- Final Resolution Area





Property in MRA Where Access Has Not Been Granted
 The Dow Chemical Company
 Midland County, Michigan
 Figure 5-7

Drawn:	JH	Checked:	MCD	Revised:	1/10/10
Date:	4 Dec 2014	Drawn By:	John J. Radabaugh	Note: MRA Where Access Has Not Been Granted	



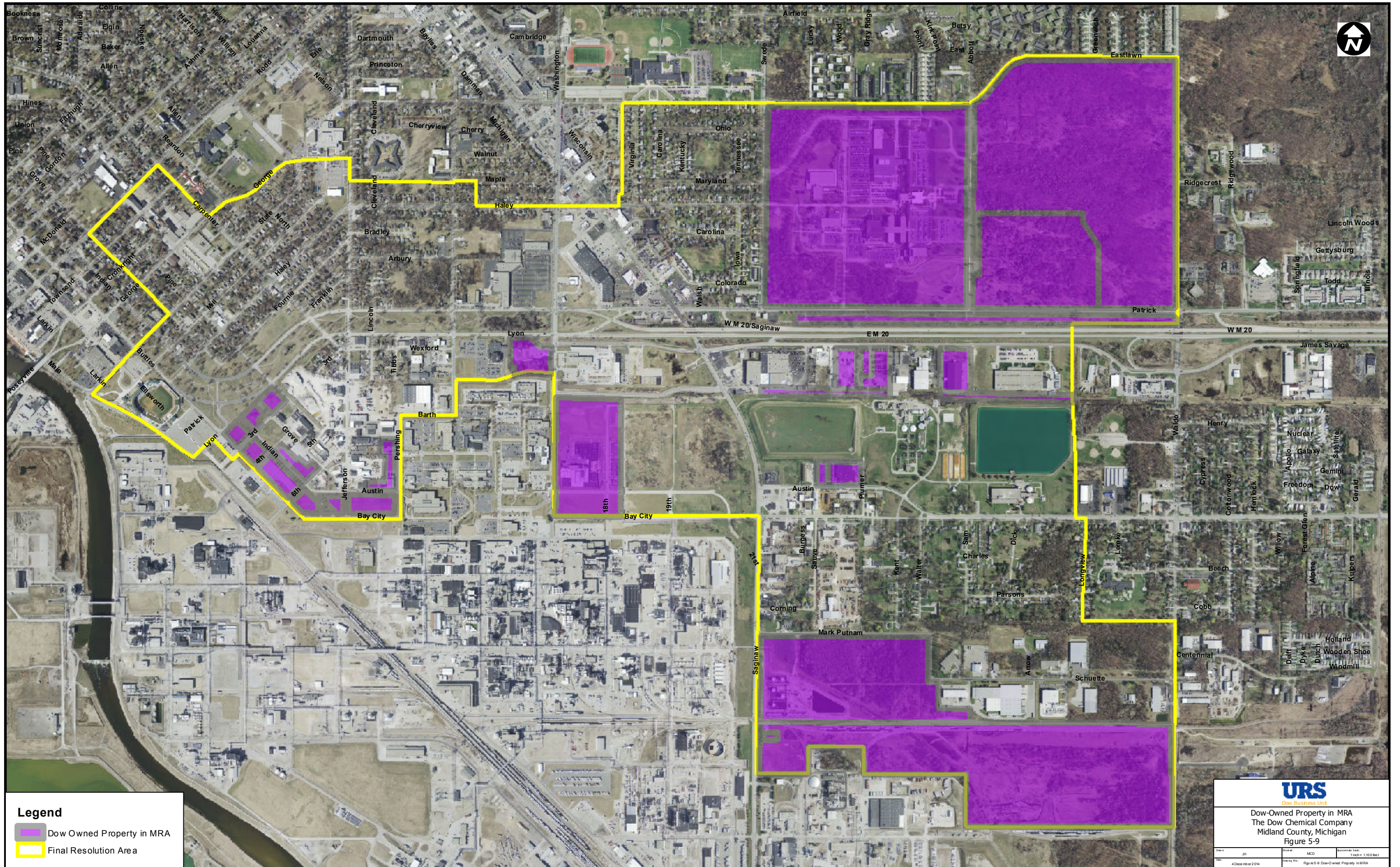
Legend

-  Undeveloped Woodlands
-  Final Resolution Area



Dow Business Unit
 Undeveloped Woodlands
 The Dow Chemical Company
 Midland County, Michigan
 Figure 5-8

Drawn: JH	Scale: MCD	Revision: 1 inch = 1.00 feet
Date: 4 Dec 2014	Drawn By: JH	Figure 5-8 Undeveloped Woodlands



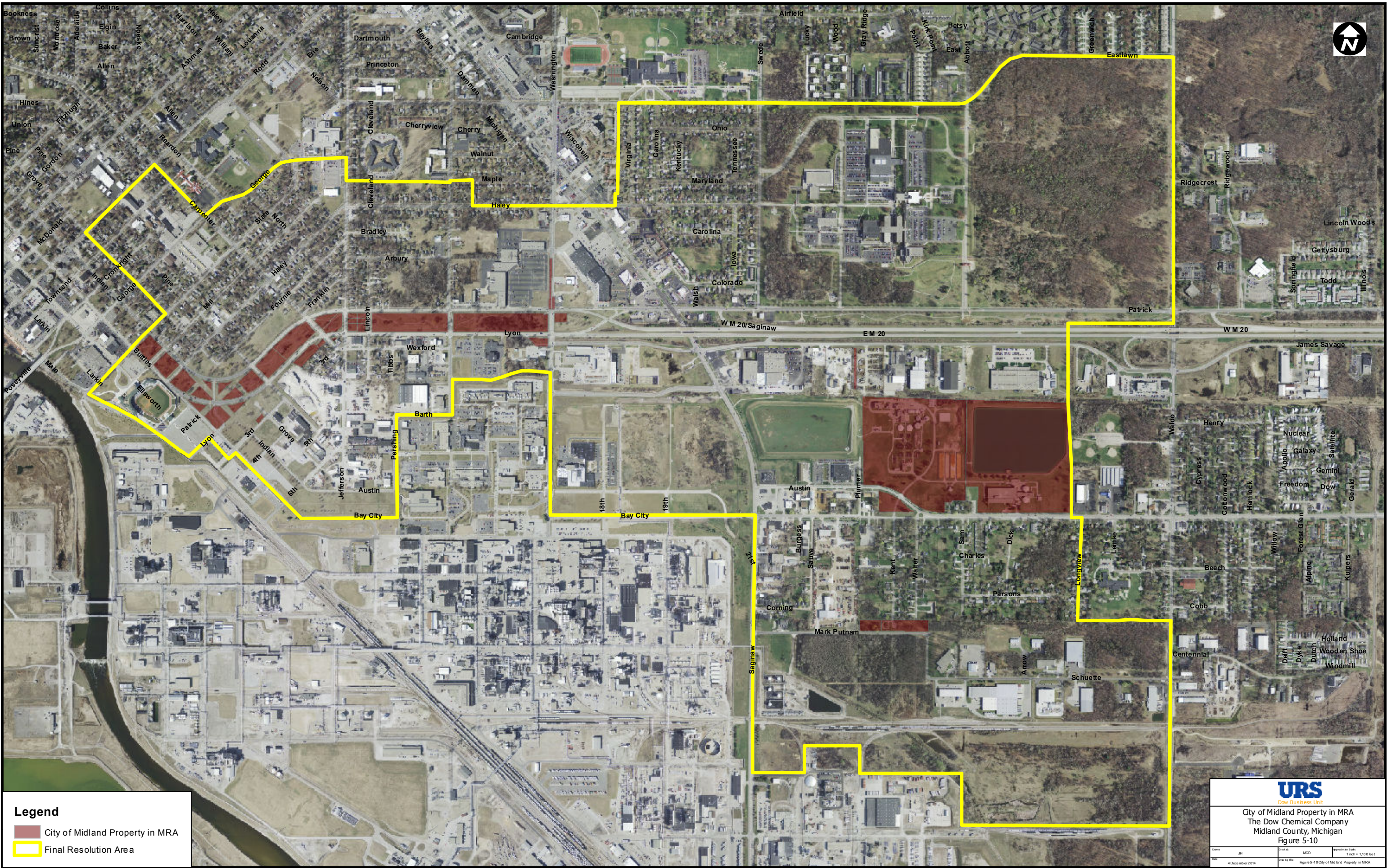
Legend

- Dow Owned Property in MRA
- Final Resolution Area



Dow Business Unit
 Dow-Owned Property in MRA
 The Dow Chemical Company
 Midland County, Michigan
 Figure 5-9

Drawn: JH	Scale: MCD	Horizontal Scale: 1 inch = 1,100 feet
Date: 4 December 2014	Drawn By: JH	Figure 5-9 Dow-Owned Property in MRA



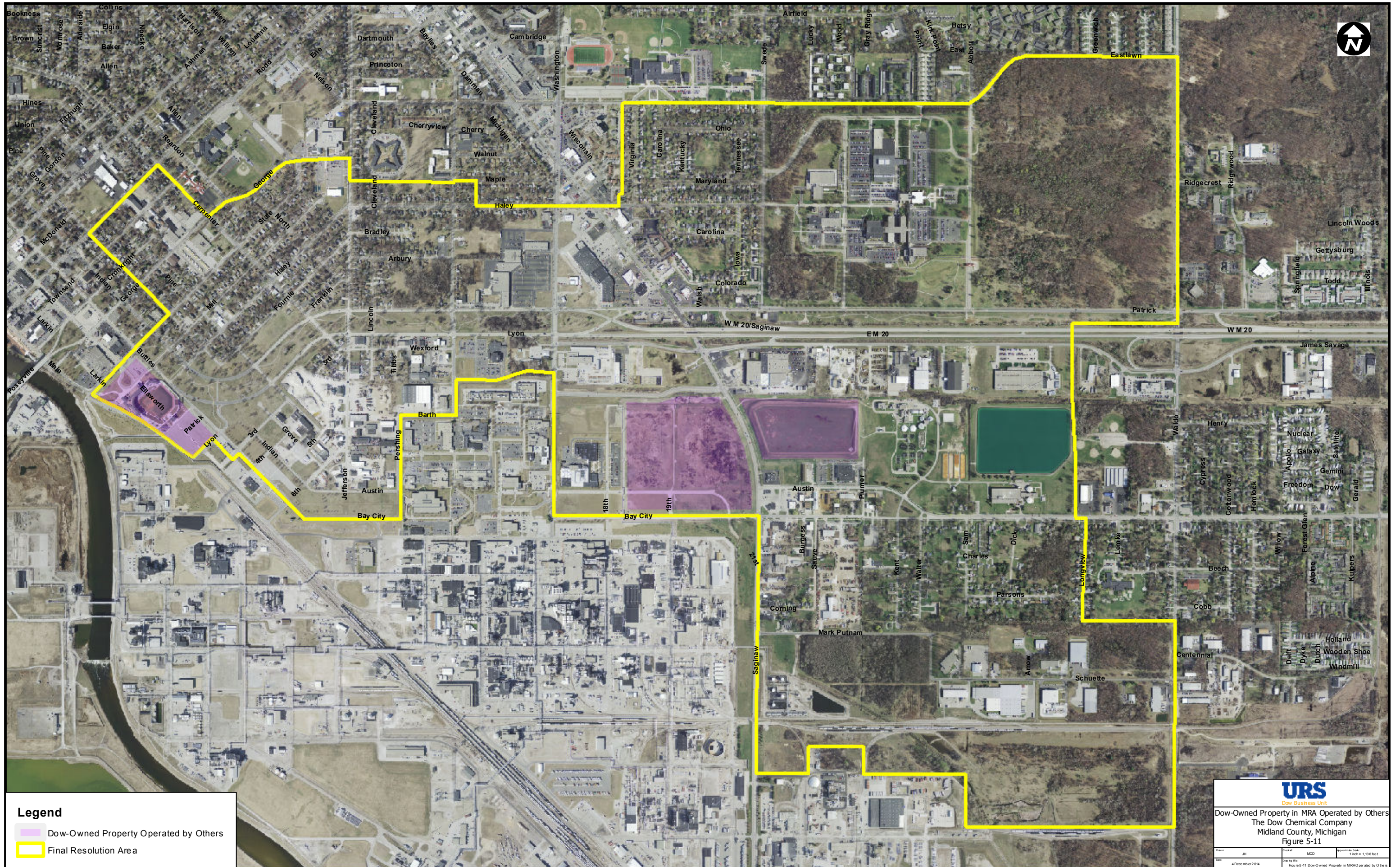
Legend

- City of Midland Property in MRA
- Final Resolution Area




City of Midland Property in MRA
 The Dow Chemical Company
 Midland County, Michigan
 Figure 5-10

Drawn: JH	Checked: MCD	Scale: 1 inch = 1,100 feet
Date: 4 December 2014	Drawn By: Figure 5-10 City of Midland Property in MRA	

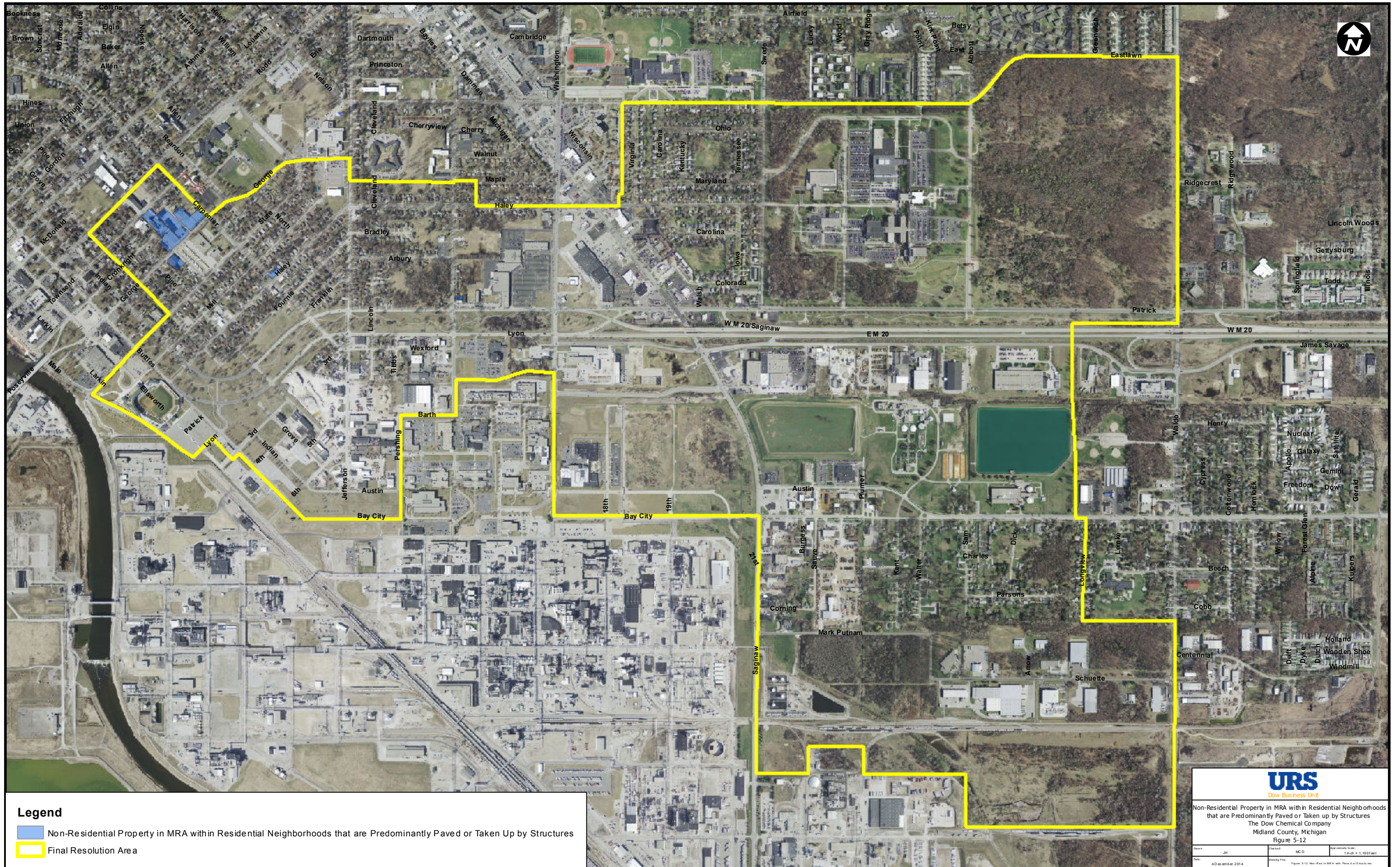


Legend

- Dow-Owned Property Operated by Others
- Final Resolution Area


 Dow Business Unit
Dow-Owned Property in MRA Operated by Others
 The Dow Chemical Company
 Midland County, Michigan
 Figure 5-11

Date: 4 December 2014	Drawing No: MCO	Revision: 1 inch = 1,000 feet
<small>Figure 5-11 Dow-Owned Property in MRA Operated by Others</small>		



Legend

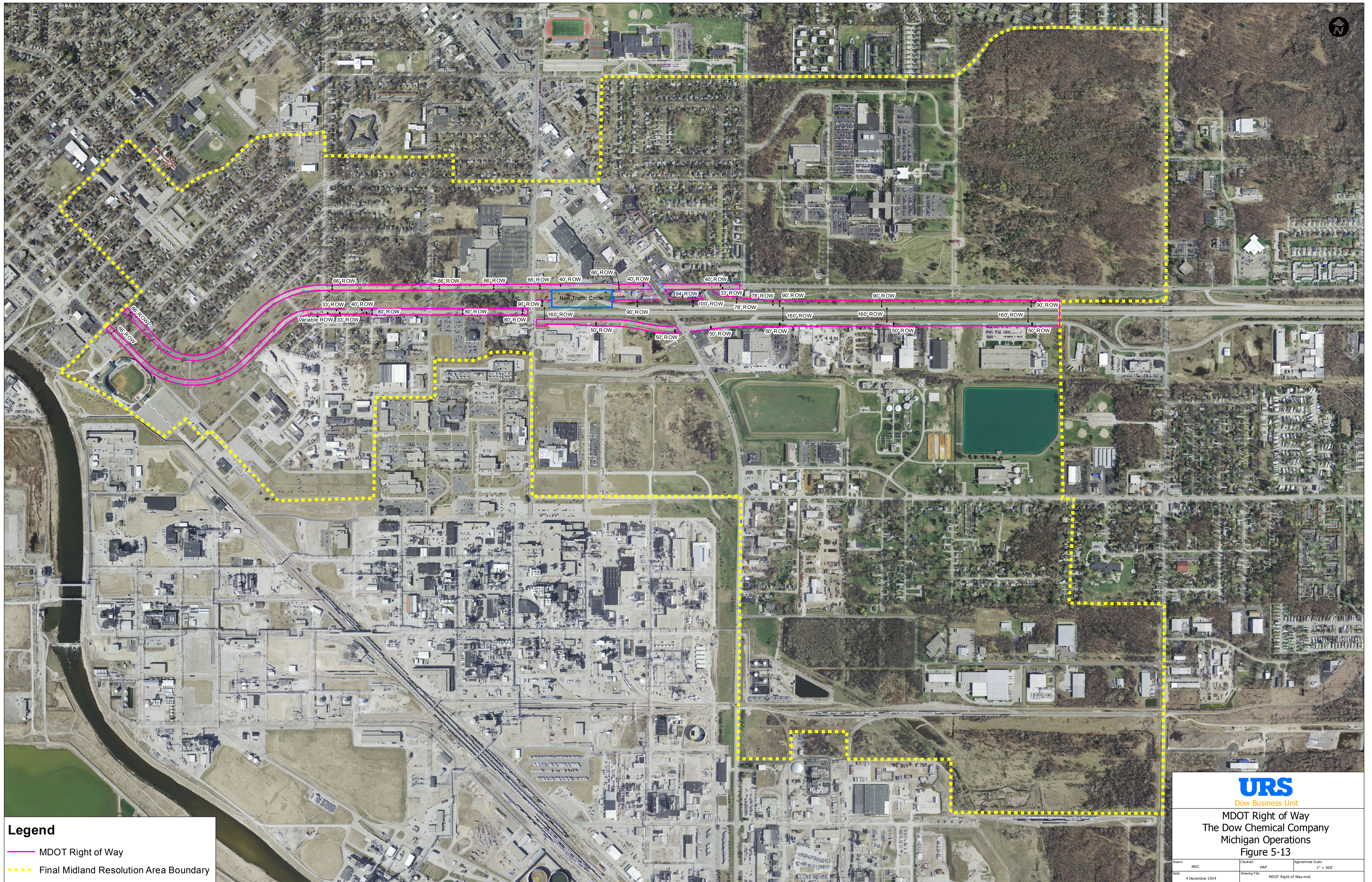
- Non-Residential Property in MRA with Residential Neighborhoods that are Predominantly Paved or Taken up by Structures
- Final Resolution Area



Dow Business Unit


Non-Residential Property in MRA with Residential Neighborhoods that are Predominantly Paved or Taken up by Structures
 The Dow Chemical Company
 Midland County, Michigan
 Figure 5-12

Drawn: JH	Checked: MCD	Map Scale: 1 inch = 1,000 feet
Date: 4D December 2014	Drawing File: Figure 5-12 Non-Res in MRA with Paved or Structures	



Legend

- MDOT Right of Way
- Final Midland Resolution Area Boundary


 Dow Business Unit
 MDOT Right of Way
 The Dow Chemical Company
 Michigan Operations
 Figure 5-13

Drawn: MDC	Checked: HAP	Approximate Scale: 1" = 500'
Date: 4 December 2014	Drawing File: MDOT Right of Way.mxd	