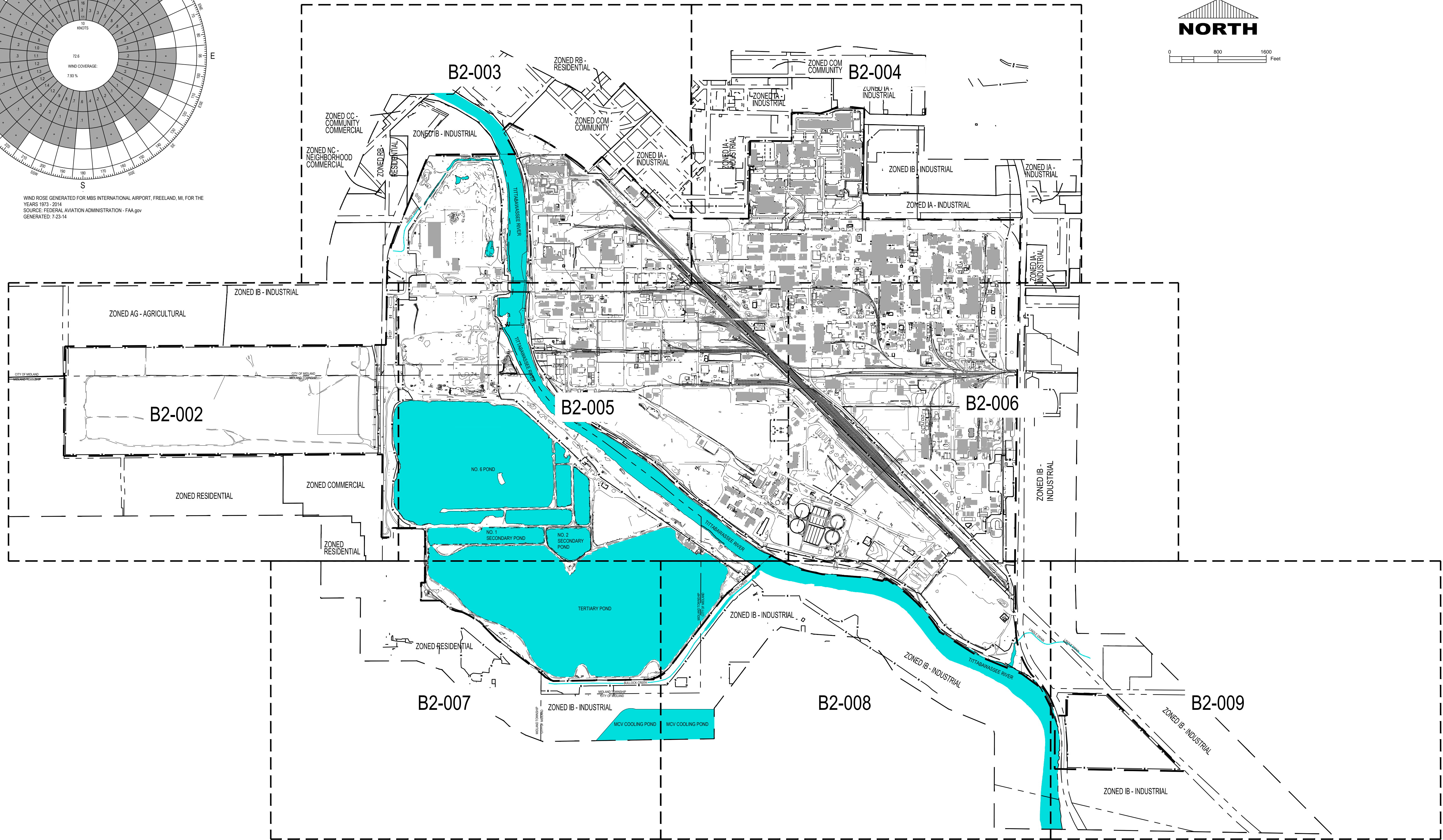
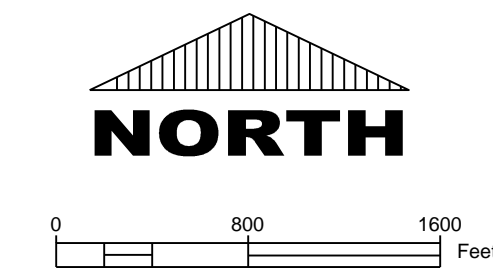


WIND ROSE GENERATED FOR MBS INTERNATIONAL AIRPORT, FREELAND, MI, FOR THE YEARS 1973 - 2014
 SOURCE: FEDERAL AVIATION ADMINISTRATION - FAA.gov
 GENERATED: 7/23/14



ISSUED FOR	
DATE	
IN CHARGE	
APP	
CK	
JDD	
DR	
DA/E TWR	

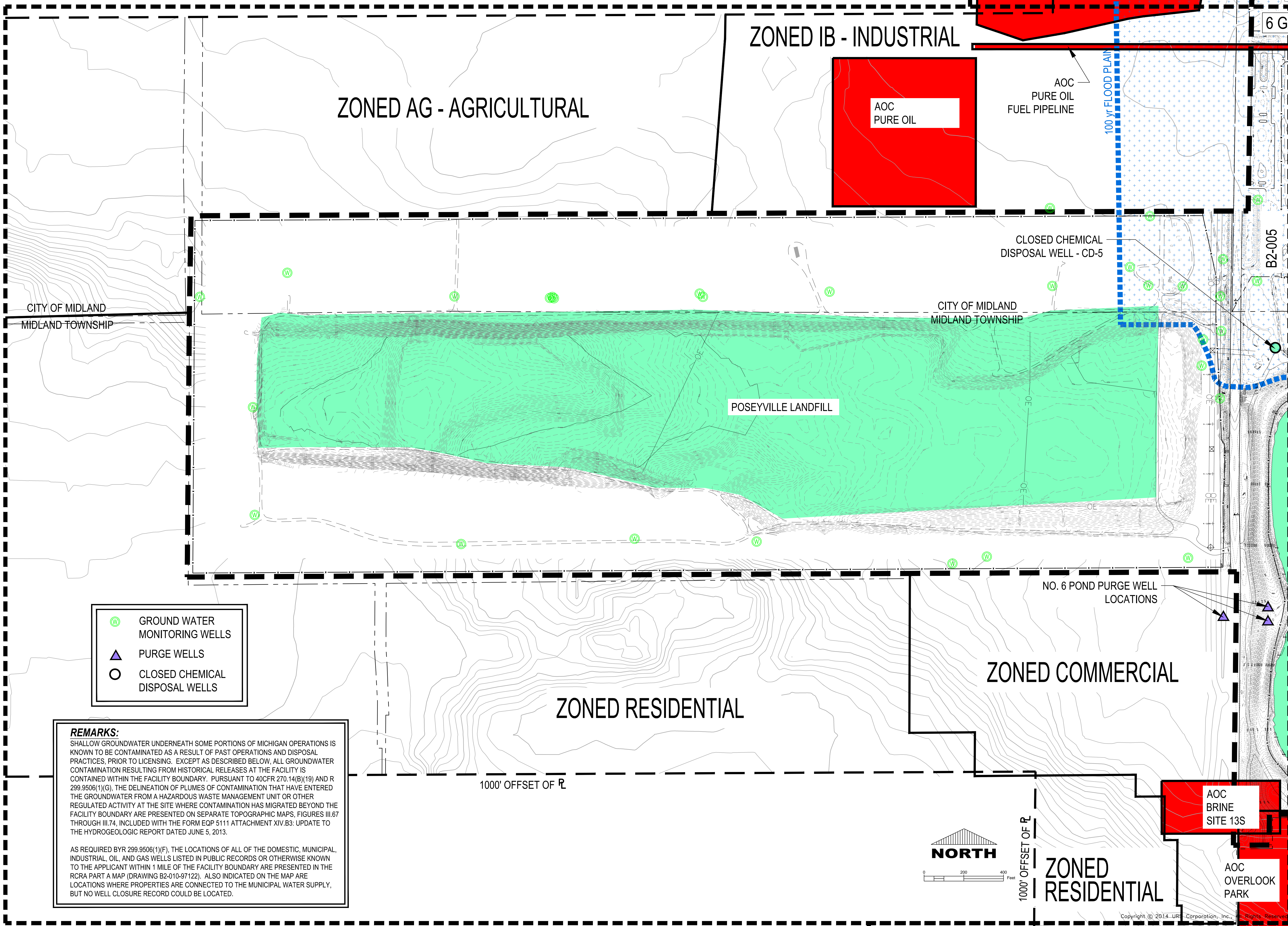
ISSUED FOR	
DATE	
IN CHARGE	
APP	
CK	
JDD	
DR	
DA/E TWR	

SOUTHFIELD, MI,
 27777 FRANKLIN ROAD,
 AMERICAN CENTER BLDG.,
 248.204-3900

THE DOW CHEMICAL COMPANY
 MICHIGAN OPERATIONS




OVERALL SITE TOPOGRAPHIC MAP

DRAWING	B2-001-41569891
FILE	41569891



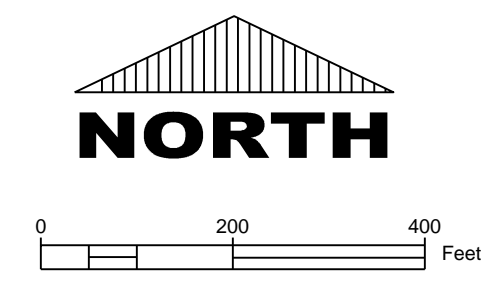
CITY OF MIDLAND
MIDLAND TOWNSHIP

CITY OF MIDLAND
MIDLAND TOWNSHIP

-  GROUND WATER MONITORING WELLS
-  PURGE WELLS
-  CLOSED CHEMICAL DISPOSAL WELLS

REMARKS:
SHALLOW GROUNDWATER UNDERNEATH SOME PORTIONS OF MICHIGAN OPERATIONS IS KNOWN TO BE CONTAMINATED AS A RESULT OF PAST OPERATIONS AND DISPOSAL PRACTICES. PRIOR TO LICENSING. EXCEPT AS DESCRIBED BELOW, ALL GROUNDWATER CONTAMINATION RESULTING FROM HISTORICAL RELEASES AT THE FACILITY IS CONTAINED WITHIN THE FACILITY BOUNDARY. PURSUANT TO 40CFR 270.14(B)(19) AND R 299.9506(1)(G), THE DELINEATION OF PLUMES OF CONTAMINATION THAT HAVE ENTERED THE GROUNDWATER FROM A HAZARDOUS WASTE MANAGEMENT UNIT OR OTHER REGULATED ACTIVITY AT THE SITE WHERE CONTAMINATION HAS MIGRATED BEYOND THE FACILITY BOUNDARY ARE PRESENTED ON SEPARATE TOPOGRAPHIC MAPS, FIGURES III.67 THROUGH III.74, INCLUDED WITH THE FORM EQP 5111 ATTACHMENT XIV.B3: UPDATE TO THE HYDROGEOLOGIC REPORT DATED JUNE 5, 2013.

AS REQUIRED BYR 299.9506(1)(F), THE LOCATIONS OF ALL OF THE DOMESTIC, MUNICIPAL, INDUSTRIAL, OIL, AND GAS WELLS LISTED IN PUBLIC RECORDS OR OTHERWISE KNOWN TO THE APPLICANT WITHIN 1 MILE OF THE FACILITY BOUNDARY ARE PRESENTED IN THE RCRA PART A MAP (DRAWING B2-010-97122). ALSO INDICATED ON THE MAP ARE LOCATIONS WHERE PROPERTIES ARE CONNECTED TO THE MUNICIPAL WATER SUPPLY, BUT NO WELL CLOSURE RECORD COULD BE LOCATED.



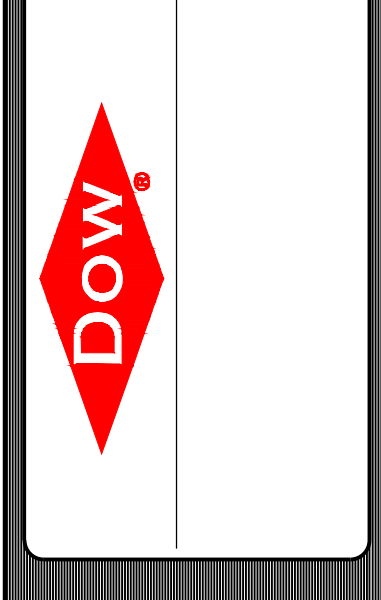
ISSUED FOR	DATE
IN CHARGE	
APP	
CK	
JDD	
TWR	

DA/E	TWR
DR	JDD
CK	TWR
APP	

SOUTHFIELD, MI,
27777 FRANKLIN ROAD,
AMERICAN CENTER BLDG.,
248.204-3900






THE DOW CHEMICAL COMPANY
MICHIGAN OPERATIONS
SITE TOPOGRAPHIC MAP

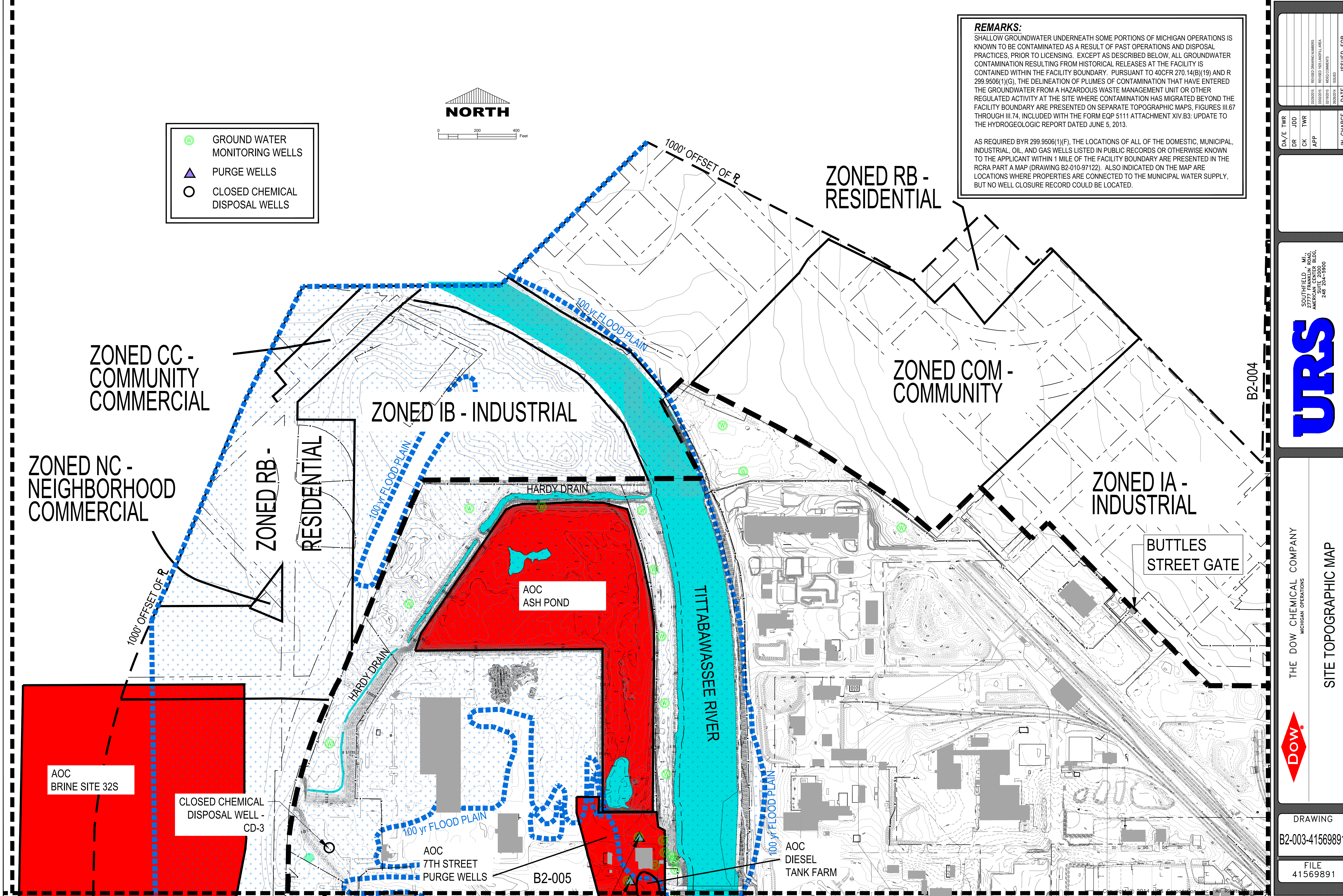
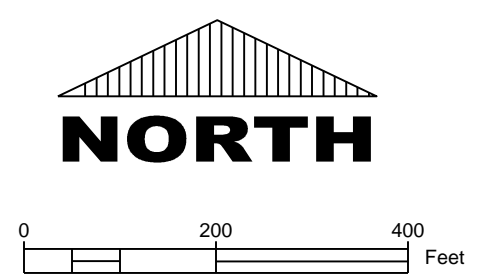


DRAWING	B2-002-41569891
FILE	41569891

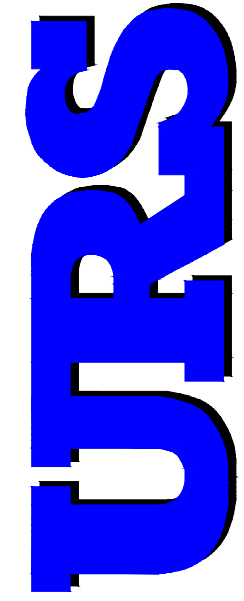
REMARKS:
 SHALLOW GROUNDWATER UNDERNEATH SOME PORTIONS OF MICHIGAN OPERATIONS IS KNOWN TO BE CONTAMINATED AS A RESULT OF PAST OPERATIONS AND DISPOSAL PRACTICES, PRIOR TO LICENSING. EXCEPT AS DESCRIBED BELOW, ALL GROUNDWATER CONTAMINATION RESULTING FROM HISTORICAL RELEASES AT THE FACILITY IS CONTAINED WITHIN THE FACILITY BOUNDARY. PURSUANT TO 40CFR 270.14(B)(19) AND R 299.9506(1)(G), THE DELINEATION OF PLUMES OF CONTAMINATION THAT HAVE ENTERED THE GROUNDWATER FROM A HAZARDOUS WASTE MANAGEMENT UNIT OR OTHER REGULATED ACTIVITY AT THE SITE WHERE CONTAMINATION HAS MIGRATED BEYOND THE FACILITY BOUNDARY ARE PRESENTED ON SEPARATE TOPOGRAPHIC MAPS, FIGURES III.67 THROUGH III.74, INCLUDED WITH THE FORM EQP 5111 ATTACHMENT XIV.B3: UPDATE TO THE HYDROGEOLOGIC REPORT DATED JUNE 5, 2013.

AS REQUIRED BYR 299.9506(1)(F), THE LOCATIONS OF ALL OF THE DOMESTIC, MUNICIPAL, INDUSTRIAL, OIL, AND GAS WELLS LISTED IN PUBLIC RECORDS OR OTHERWISE KNOWN TO THE APPLICANT WITHIN 1 MILE OF THE FACILITY BOUNDARY ARE PRESENTED IN THE RCRA PART A MAP (DRAWING B2-010-97122). ALSO INDICATED ON THE MAP ARE LOCATIONS WHERE PROPERTIES ARE CONNECTED TO THE MUNICIPAL WATER SUPPLY, BUT NO WELL CLOSURE RECORD COULD BE LOCATED.

-  GROUND WATER MONITORING WELLS
-  PURGE WELLS
-  CLOSED CHEMICAL DISPOSAL WELLS




DATE	ISSUED FOR
DA/E TWR	
DR JDD	
CK TWR	
APP	
IN CHARGE	



SOUTHFIELD, MI
 27777 FRANKLIN ROAD, 4TH FLOOR
 AMERICAN CENTER BLDG.
 248.264.3900

THE DOW CHEMICAL COMPANY
 MICHIGAN OPERATIONS



DRAWING
 B2-003-41569891

FILE
 41569891