



**Clean Michigan Initiative
Clean Water Fund Grant**
Tracking code: 2002-0266



Oakland County Drain Commissioner
Telephone: 248 858-5248
Fax: 248 858 1066
Email: fadoirr@oakgov.com

Illicit Discharge Elimination by the Oakland County Drain Commissioner

September 1, 2004, through September 30, 2006

The Clinton River watershed covers 760 square miles in Oakland and Macomb Counties. Land usage consists of a mixture of agricultural, commercial, industrial and residential property. Pollutants impairing the waters of the Clinton River include bacteria, nutrients and sediments. Illegal connections to storm drains have been cited as a major source of contamination to the Clinton River. The Oakland County Drain Commissioner's Office maintains a network of open and enclosed storm drains within the Clinton River Watershed. The goal of the project was to inventory county drains within the Clinton River Watershed in Oakland County and examine them for illicit discharges. Once discovered, discharge sources were investigated and illicit connections found and eliminated to improve water quality in the Clinton River and Lake St. Clair.



Grant Amount: \$ 213,333.86
Match Funds: \$ 78,675.44
Total Amount: \$ 292,009.30

Project Activities:

- Outfall Identification & GIS Mapping
- Dry Weather Screening for Pollutants
- Open & Enclosed Drain Surveys
- Water Quality Testing and Sampling
- Illicit Discharge Investigations
- Facility Inspections
- Illicit Connection Identification
- Illicit Connection / Discharge Elimination
- Complaint Investigations



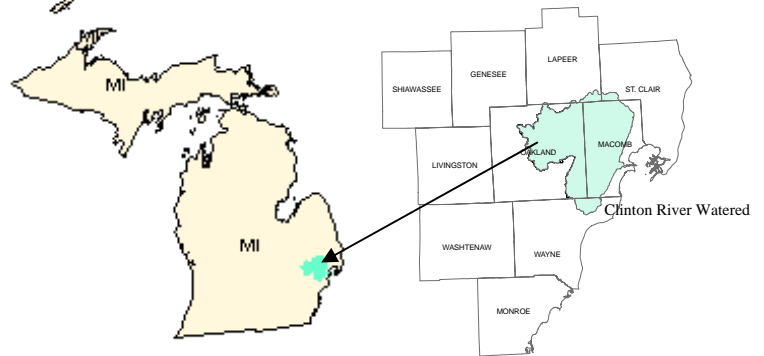
Annual Load Reductions:

- Sewage - 2,691,526 gallons
- Oil / Fuel / Grease- 3,900 gallons
- Sediments- 65,800 lbs.

Project Accomplishments:

- 128 county drains investigated
- 224 miles of open /enclosed drain surveyed
- 1,421 outfalls identified and screened
- 43 water pollution complaints investigated
- 38 illicit discharges eliminated

Project Location

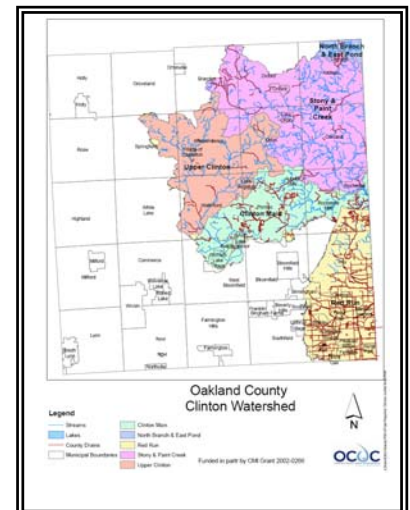


Partners involved:

Oakland County Drain Commissioner



Michigan Department of Environmental Quality

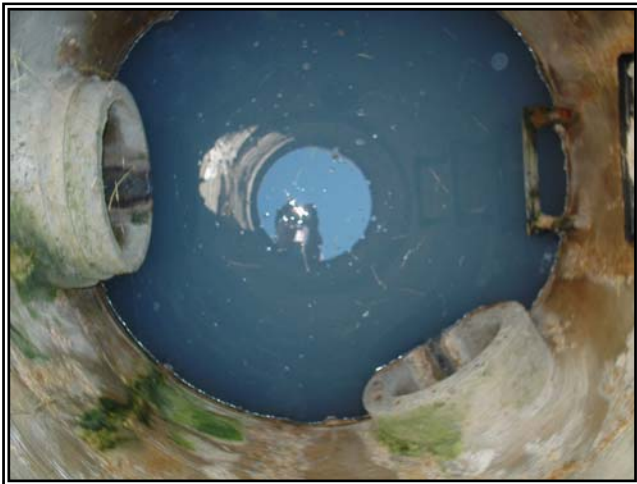




Surveys are done to locate and examine outfalls from county drains for signs of pollution.



Water quality testing for pollutants associated with illicit discharge sources is performed.



Sanitary sewage from misconnected pipes and floor drains can contaminate the river through illicit connections to storm drains.



Improper storage and disposal of wastes and polluting materials at commercial and industrial facilities can pollute local storm drains.



Sanitary sewage from misconnected or failed septic systems can flow into nearby storm drains, creeks and lakes.



Runoff from construction sites with inadequate soil erosion control measures can affect water quality of lakes and streams and ponds.