


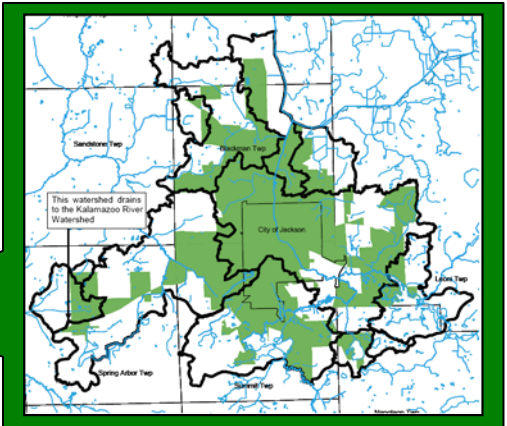


Illicit Discharge Elimination Program for the Upper Grand River Urbanized Area
June 14, 2004, to June 14, 2007

Jackson County officially began its Illicit Discharge Elimination Program in June of 2004, investigating 146 known storm water outfalls to the Grand River located in the Upper Grand River watershed. Twenty-five (25) additional storm water outfalls were identified, but 58 of the original 146 were found not to be outfalls, making the total number of Phase II municipal outfalls investigated 113. During the investigation, seven (7) illicit connections were identified. The sources of the illicit connections included five sanitary system inflows, one combined sewer overflow and one apartment complex.


 **Grant Amount: \$199,000**
Match Funds: \$79,800

Total Amount: \$278,800



Project Activities:

- Developed a Quality Assurance Project Plan to ensure accurate and efficient monitoring procedures were used.
- Developed a standard Illicit Discharge Elimination Program field manual.
- Identified nine possible illicit connections. By the end of the grant, the County had removed four confirmed illicit connection; five still required additional investigation.



Annual Pollutant Load Reductions:

- Wastewater-3.9 million gal/year
- Total Solids-28,661 mg/l
- Grease-3,981 mg/l



Upper Grand River Urbanized Area Project Data:

- Investigated 7 communities
- 113 municipal outfalls investigated
- Land use was rural and urban

Partners Involved: Jackson County Drain Commission • City of Jackson • Jackson County Health Department • Blackman Township • Leoni Township • Spring Arbor Township • Napoleon Township • Rives Township • Summit Township

Engineering Consultant: Tetra Tech



Top Left: Spill controlled boom located below a construction site. Top Right: Catch basin buried by sediment associated with a construction site. Bottom Left: Another outfall with a spill controlled boom located in the downtown area. Bottom Right: Large amount of dry weather flow.

