



Michigan's
Nonpoint Source
Program

Federal Clean Water Act

Section 319

Tracking Code: 2003-0039



Jackson County Drain Commissioner

Contact: Geoff Snyder

Telephone: (517) 788-4398

Fax: (517) 780-4728

Upper Grand River Watershed Management Plan Transition

July 26, 2004 through June 30, 2006

The Upper Grand River Watershed is approximately 700 square miles in size, beginning in northern Hillsdale County and emptying into the Grand River just north of the City of Eaton Rapids. The Grand River continues heading northwest and eventually drains into Lake Michigan. This grant focused on the Upper Grand River Watershed. Thirty-eight (38) local units of government in six counties lie wholly or partially within the Upper Grand River Watershed.

Working together with the Upper Grand River Watershed Council, this Watershed Management Plan (WMP) Addendum was developed to fulfill the new USEPA 319 Nine Minimum Elements of Watershed Planning, and the National Pollutant Discharge Elimination System (NPDES) Phase II requirements. This plan is a supplement to the 2003 Upper Grand River Watershed Management Plan and not a replacement.

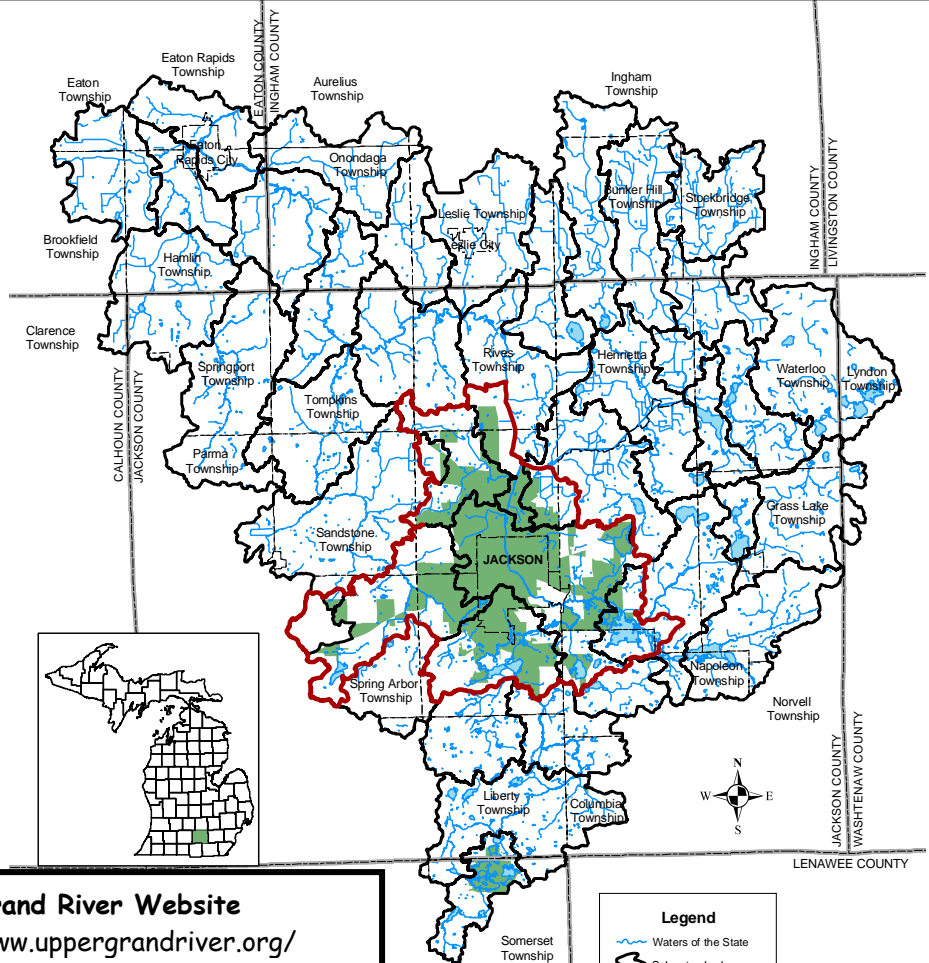
Grant Amount: \$91,200
Match Funds: \$18,000
Total Amount: \$109,200

Watershed Plan Goals:

- Have a well informed and involved public to protect and manage the watershed
- Assure that new development projects will be water quality friendly
- Meet warm water fisheries and aquatic life and wildlife designated uses
- Protect and restore the loss of natural features
- Protect and enhance recreation opportunities
- Encourage water quality friendly agricultural practices
- Increase water quality through pollution prevention/good housekeeping practices for municipal operations
- Continued watershed management plan implementation and institutionalization

Load Reduction Goal:

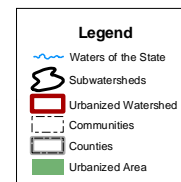
Reduce the nonpoint source sediment by 50% or 8.25 million pounds per year



Upper Grand River Website
<http://www.uppergrandriver.org/>

Partners involved:

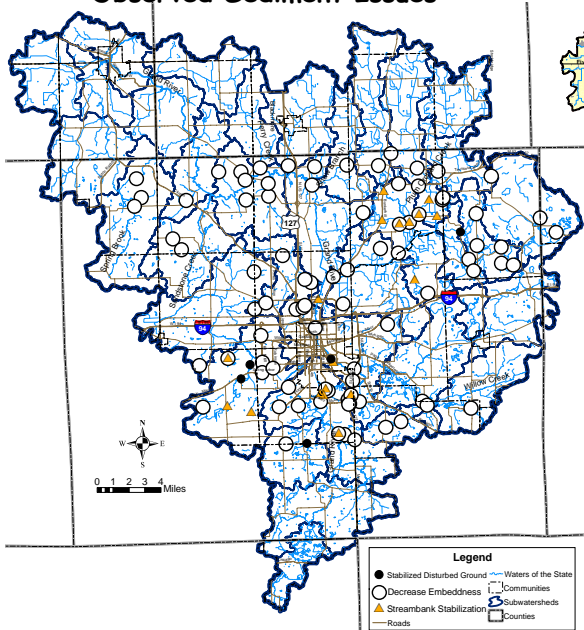
- Upper Grand River Watershed Council
- Grand River Environmental Action Team
- Grand River Inter-County Drainage Board
- Jackson Area Storm Water Phase II Committee
- Jackson County Conservation District
- Michigan Department of Environmental Quality
- Region 2 Planning Commission
- Tetra Tech, Inc.



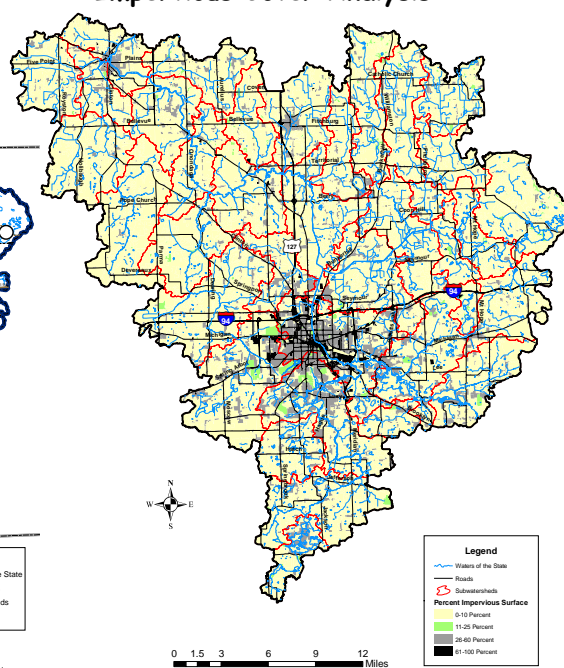
Implementation Schedule Overview

2006	2007	2008	2009	2010	2015	2020	2025	2030
Complete Council Organization, Hire Director, Grow Membership								
Education Targeting Agriculture								
Education Targeting Urbanized Areas								
Evaluate and Improve Municipal Good Housekeeping Activities								
Development Standards; Research, Agree Upon, Implement								
Natural Features Protection; Research, Agree Upon, Implement								
Wetlands; Inventory, Protect, Restore								
Sediment Issues; Start With Easy Sources Gradually Move On To More Complex Issues								
Illicit Discharge Removal (Repeat Every 5 Years)								
Albrow Creek Sanitary Issues								
Recreation Assessment and Improvements								
Impervious Area Retrofit Projects								

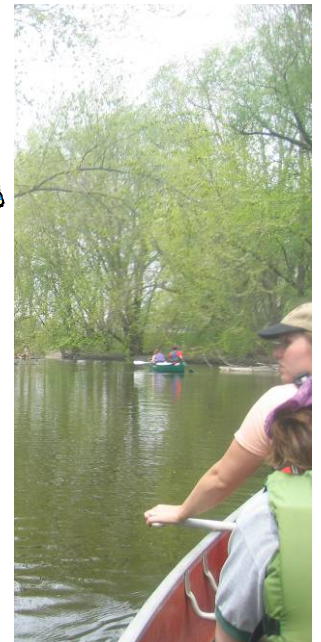
Observed Sediment Issues



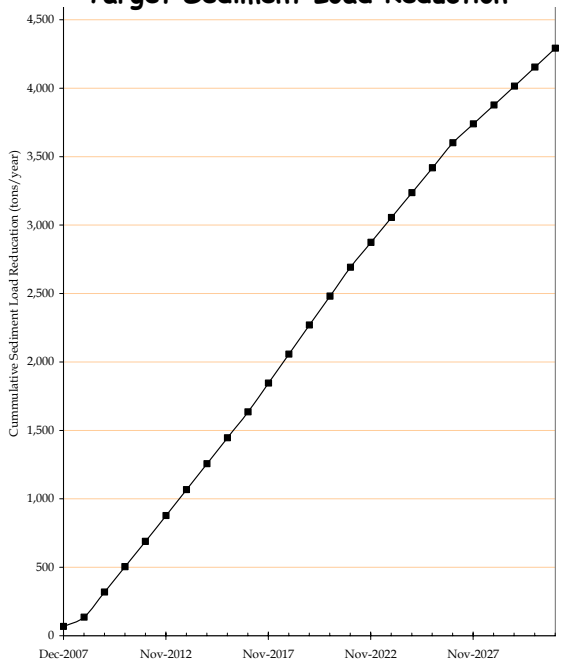
Impervious Cover Analysis



Canoeing



Target Sediment Load Reduction



Streambank Erosion on Grand River

