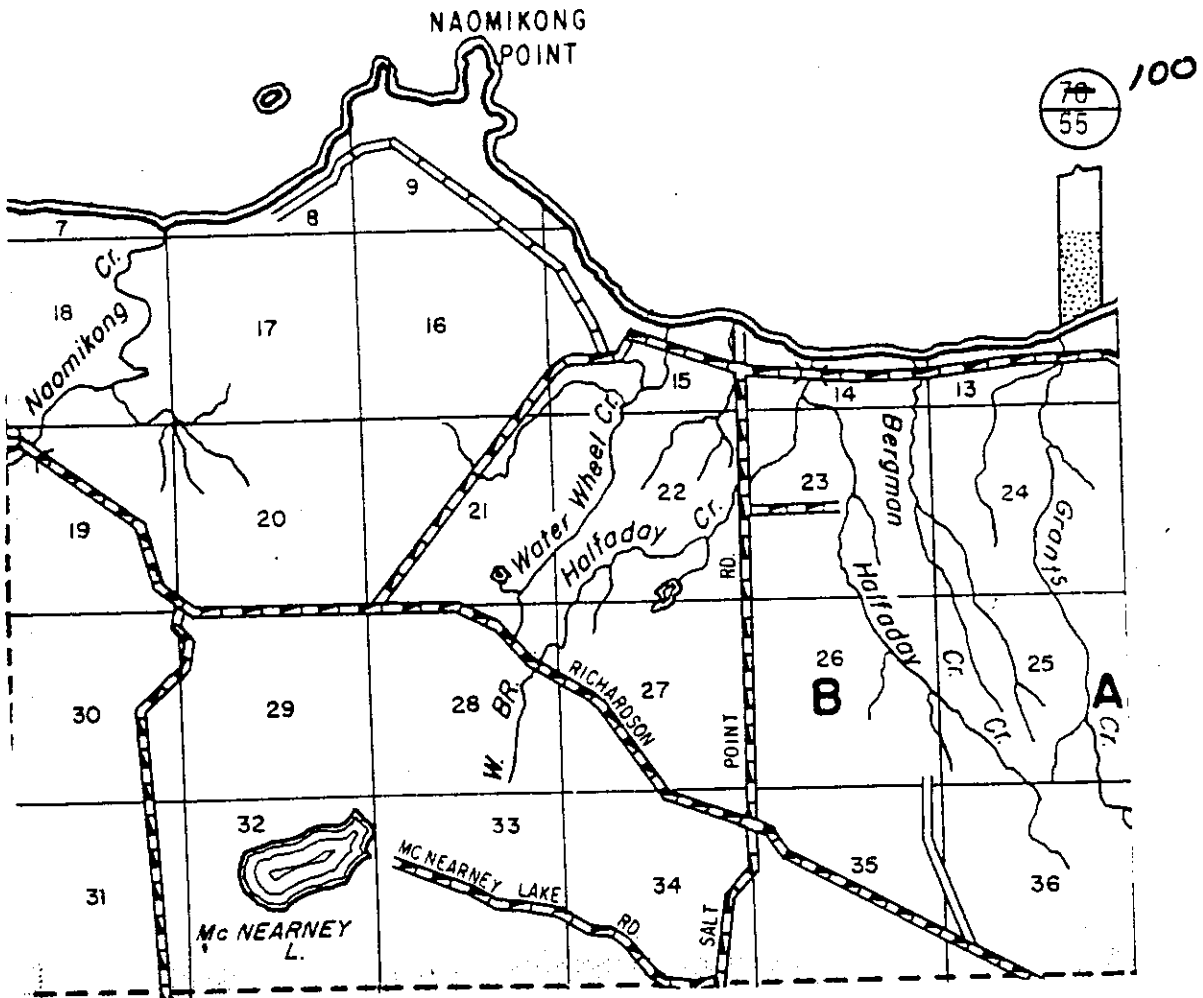
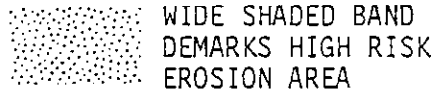
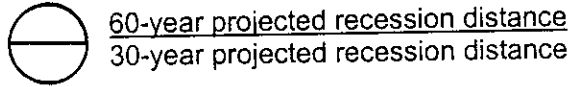
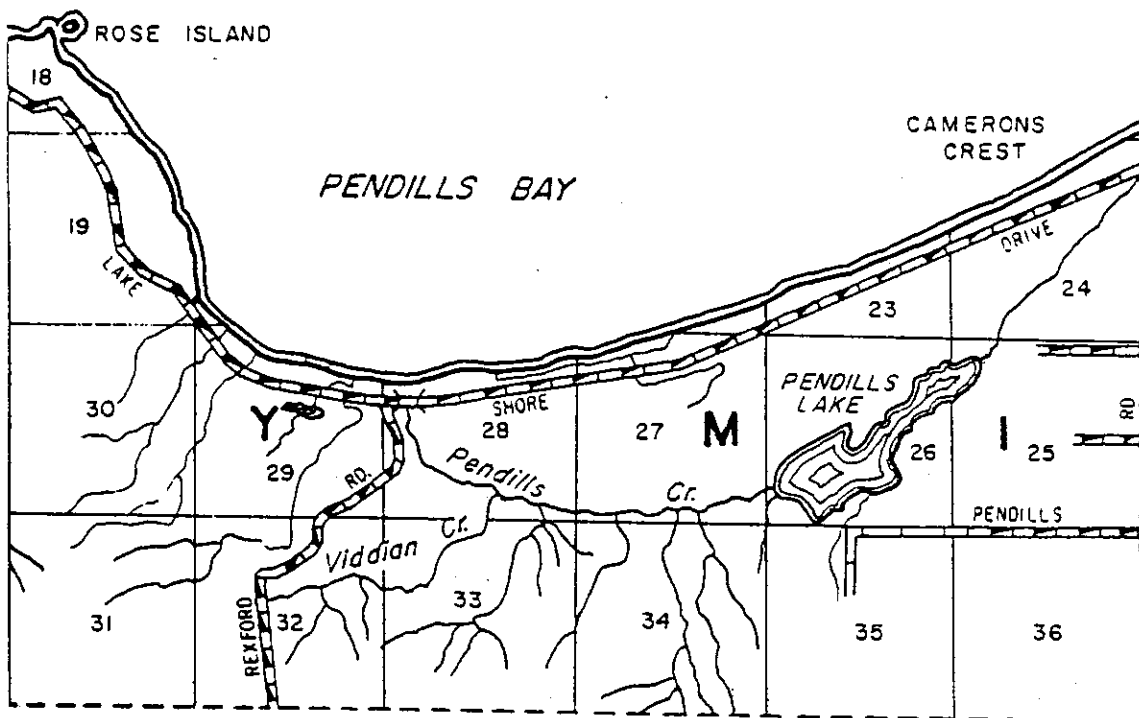


CHIPPEWA COUNTY  
BAY MILLS TOWNSHIP (WEST PART)  
T.47N R.5W



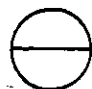
CHIPPEWA COUNTY  
BAY MILLS TOWNSHIP (WEST CENTRAL PART)  
T.47N R.4W

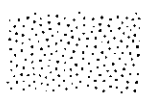
(No high risk erosion areas in  
this portion of the township.)



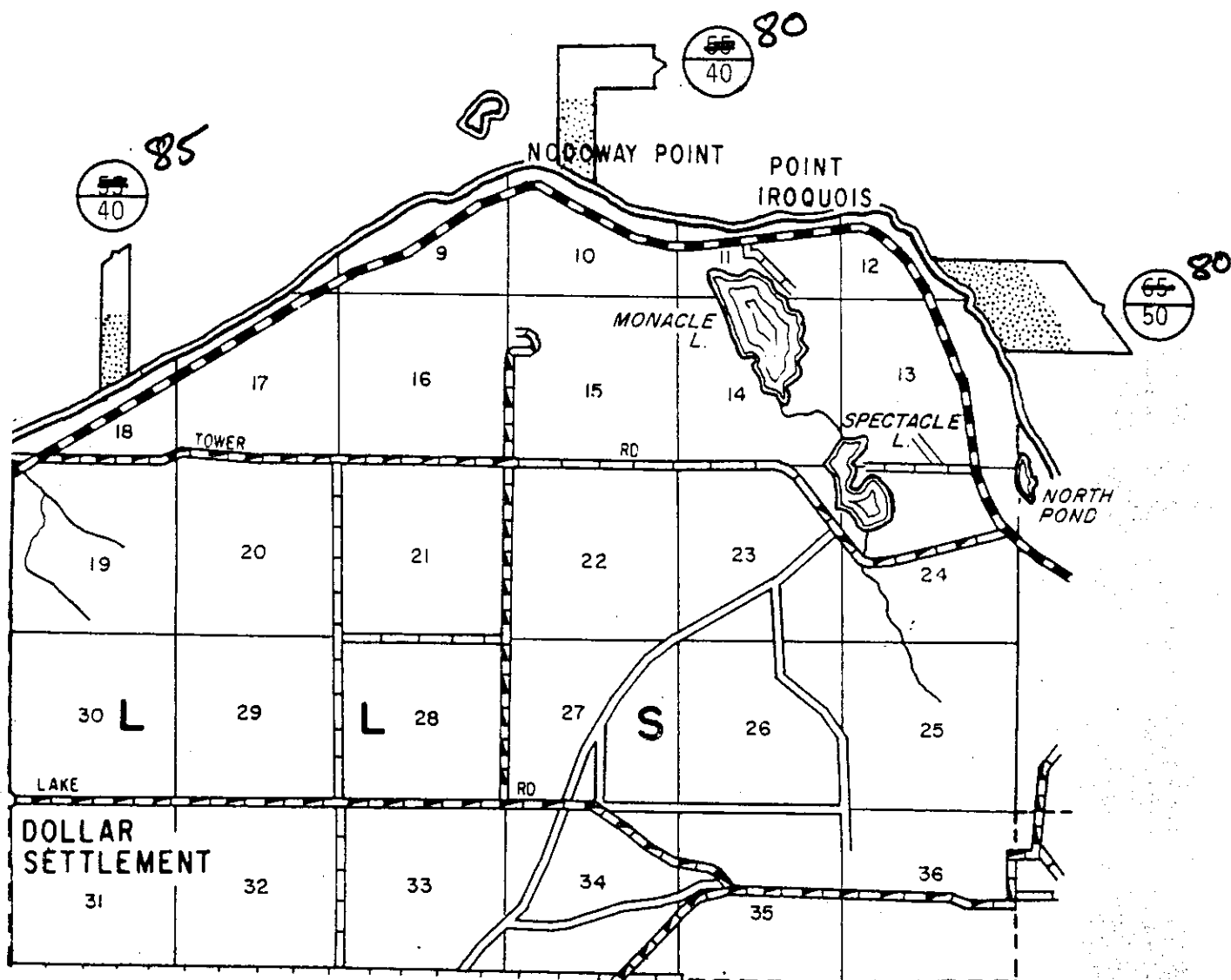
Amended May 1982

CHIPPEWA COUNTY  
BAY MILLS TOWNSHIP (EAST CENTRAL PART)  
T.47N R.3W

 60-year projected recession distance  
30-year projected recession distance

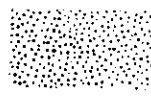
 WIDE SHADED BAND  
DEMARKS HIGH RISK  
EROSION AREA

*(906) 437-5437  
Richard Timmer  
B.M. Top 2A*



CHIPPEWA COUNTY  
BAY MILLS TOWNSHIP (EAST PART)  
T.47N R.2W

 60-year projected recession distance  
30-year projected recession distance

 WIDE SHADED BAND  
DEMARKS HIGH RISK  
EROSION AREA

