

Family Independence Program

EARNED INCOME REPORT

March 2009
Bridges Implementation
Data Valid Only for Non-Bridges Counties

Prepared by:

Rosemary Lee
Budget Division
Michigan Department of Human Services

Earned Income Report

Data for the Earned Income Report is obtained from the Department of Human Service's Client Information Management System (CIMS). The information is point-in-time data and is obtained at the beginning of each month. This data reflects the case transactions that occurred during the previous month.

Due to the nature of the public assistance caseload, the data displayed here represents a picture of a population that is constantly changing. Families move on and off public assistance, gain or lose employment and many move frequently.

For purposes of this report the formula for determining the number of cases required to work is:

(FIP cases) minus (cases open less than 60 days) minus (Work First deferred cases, i.e., those not required to work).

The Michigan Department of Human Service (DHS) assists families in becoming self supportive. By involving the adult members of the household in employment and/or self-sufficiency-related activities leading to self sufficiency, DHS hopes to help restore self-confidence and a sense of self-worth. A tool used to achieve this goal is the Personal Responsibility Plan and Family Contract (PRPFC). This agreement is completed by the client and the caseworker to mutually arrive at a plan which meets the family's goals for self-sufficiency and outlines the family's and the Department's responsibilities. It is required by both federal and state law.

All Family Independence Program (FIP) and Refugee Assistance Program (RAP) eligible adults and 16-and 17-year-olds not in high school full time must be referred to the Jobs, Education and Training (JET) Program or other employment service provider, unless deferred or engaged in activities that meet participation requirements. JET is a program administered by the Michigan Department of Labor and Economic Growth (DLEG), Michigan Works System. The individual sites where clients report are the Michigan Works! Agencies (MWAs). The JET program serves employers and job seekers to ensure that employers have skilled workers and workers have good jobs that provide economic self-sufficiency.

Clients are made aware that public assistance is limited to 48 months to meet their family's needs and that it is their responsibility to achieve self-sufficiency. Information on ways to achieve independence, direct support services, non-compliance penalties, and good cause reasons, is initially shared by DHS when the client applies for cash assistance.

Jobs, Education and Training (JET) program requirements, education and training opportunities, and assessments will be covered by the JET case manager when a mandatory JET participant is referred at application.

All Work Eligible Individuals (WEIs), unless deferred, disregarded or working 40 hours per week, must engage in employment at or above minimum wage or participate in other MWA approved activities. [For specific policy guidelines and reasons for deferrals, see Policy Eligibility Manual Item 230A.]

Additional resources are being developed within the department as well as efforts to coordinate with other departments such as Transportation, MSHDA, and other community agencies. In addition DHS staff will be working with clients to eliminate barriers to employment and promote independence.

Data Source: SW-210.

NOTE: The absolute integrity of the data (beginning with 11/03 data) cannot be assured until systems are updated. There are problems with the employment codes. Also, effective in the month of August, 2008, the Bridges computer eligibility system will be rolled out to various counties throughout the state. Bridges Wave 1 Implementation in the western area of the state is effective 03/17/09. Comparable earned income data is not available after implementation.

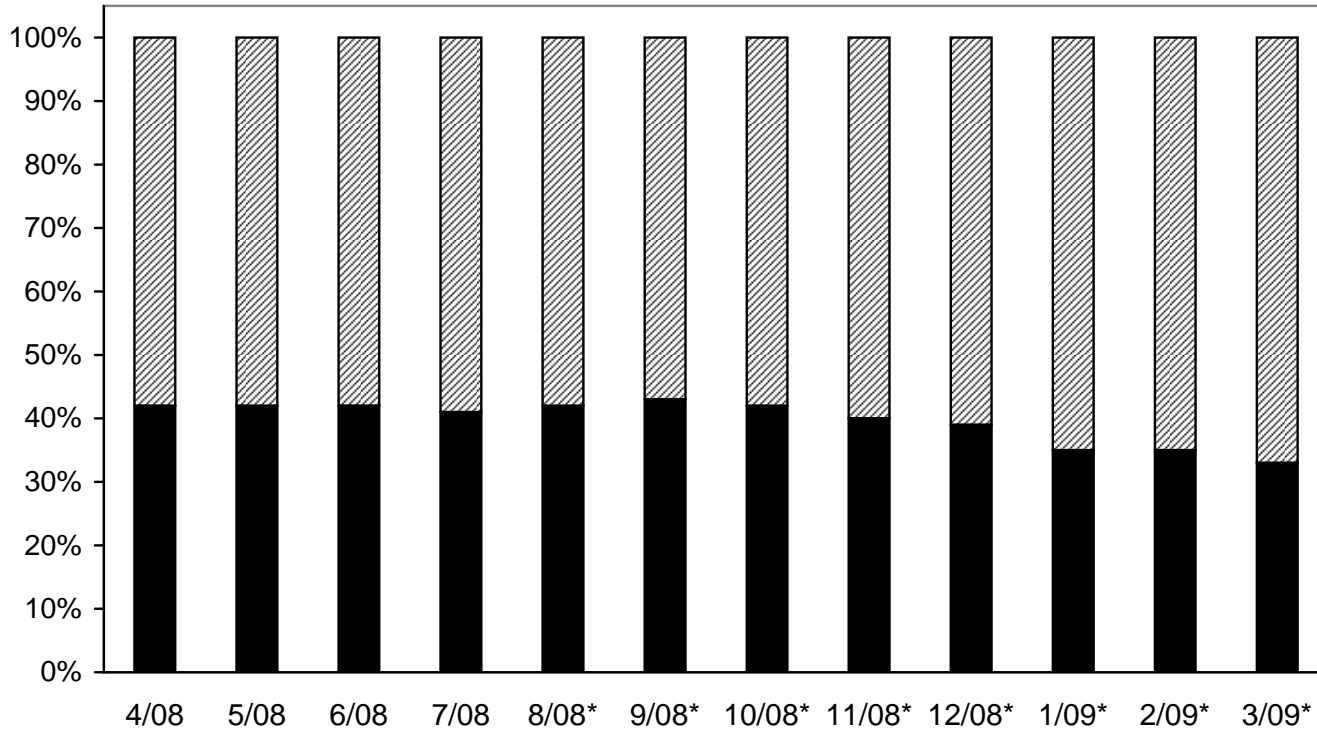
[lee]EIR/March 2009.doc

STATE TOTAL

Target Group Cases: With and Without Earned Income

Point-in-Time Data

Percentage of Cases with Earned Income



■ Percent Without Earned Income	58%	58%	58%	59%	58%	57%	58%	60%	61%	65%	65%	67%
■ Percent With Earned Income	42%	42%	42%	41%	42%	43%	42%	40%	39%	35%	35%	33%
Cases Without Earned Income	15,030	14,816	14,728	14,779	13,707	13,201	13,647	14,768	15,050	17,063	15,934	13,812
Cases With Earned Income	10,708	10,757	10,542	10,329	9,963	9,893	9,806	9,714	9,458	9,264	8,401	6,790
TOTAL Target Group Cases	25,738	25,573	25,270	25,108	23,670	23,094	23,453	24,482	24,508	26,327	24,335	20,602

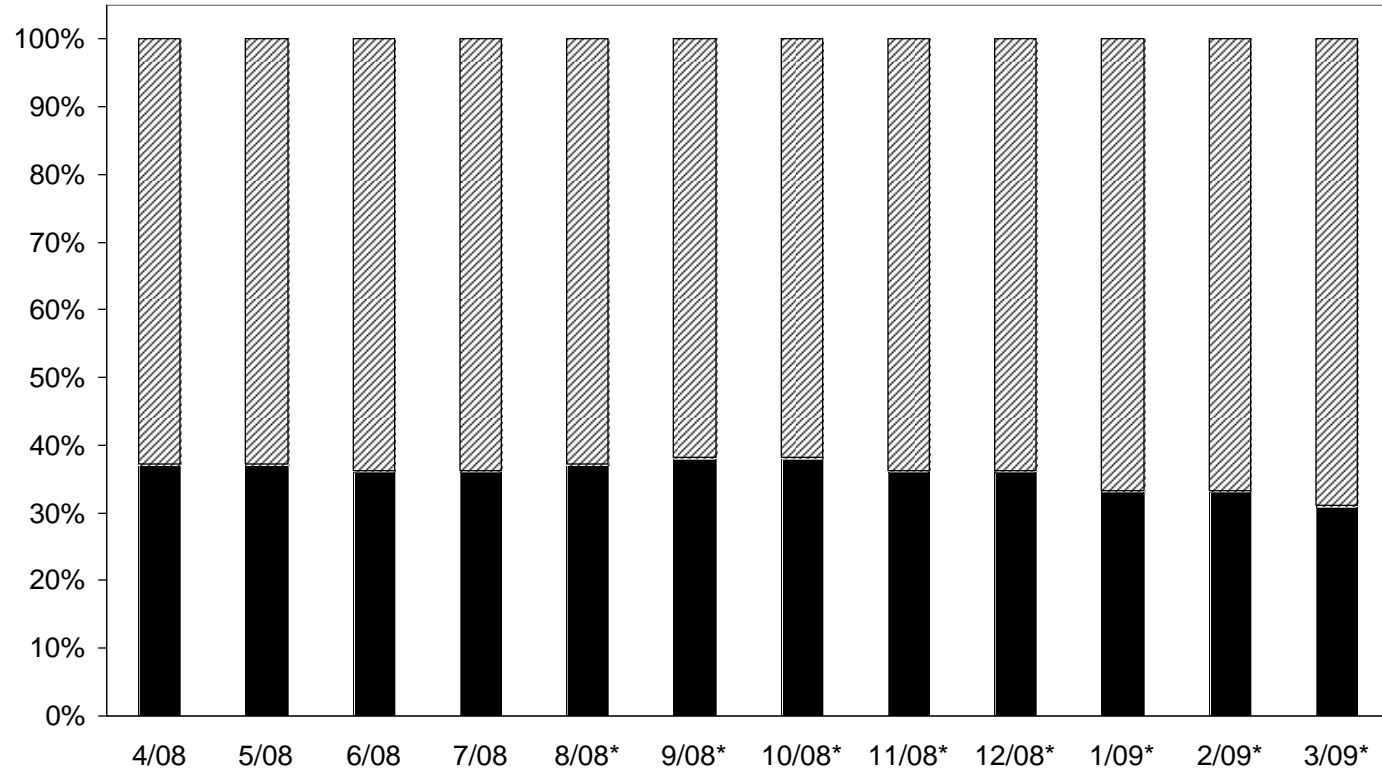
*State totals do not include all pilot, extended pilot and Wave 1 Bridges counties.

WAYNE COUNTY TOTAL

Target Group Cases: With and Without Earned Income

Point-in-Time Data

Percentage of Cases with Earned Income



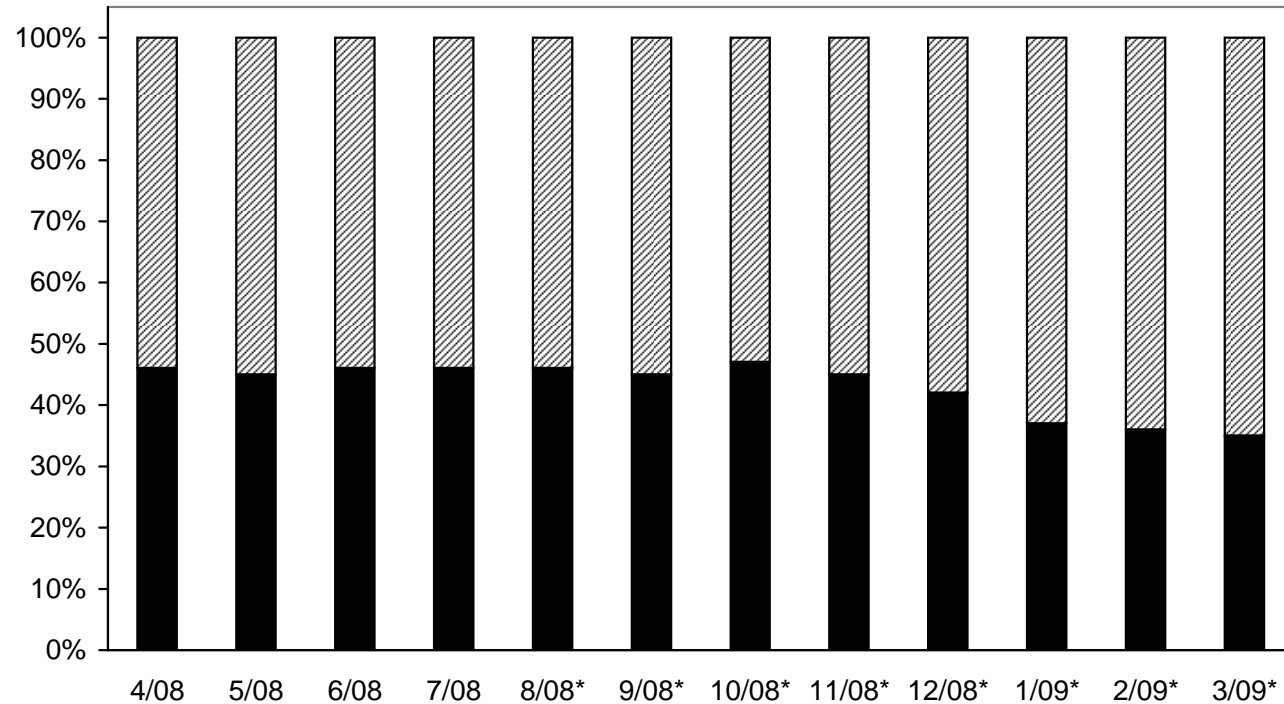
▨ Percent Without Earned Income	63%	63%	64%	64%	63%	62%	62%	64%	64%	67%	67%	69%
■ Percent With Earned Income	37%	37%	36%	36%	37%	38%	38%	36%	36%	33%	33%	31%
Cases Without Earned Income	7,409	7,312	7,303	7,269	6,881	6,488	6,496	6,926	6,788	7,652	7,329	7,551
Cases With Earned Income	4,297	4,273	4,195	4,074	3,970	3,915	3,948	3,976	3,844	3,853	3,647	3,423
TOTAL Target Group Cases	11,706	11,585	11,498	11,343	10,851	10,403	10,444	10,902	10,632	11,505	10,976	10,974

*State totals do not include all pilot, extended pilot and Wave 1 Bridges counties.

OUTSTATE TOTAL

Target Group Cases: With and Without Earned Income Point-in-Time Data

Percentage of Cases with Earned Income



■ Percent Without Earned Income	54%	55%	54%	54%	54%	55%	53%	55%	58%	63%	64%	65%
■ Percent With Earned Income	46%	45%	46%	46%	46%	45%	47%	45%	42%	37%	36%	35%
■ Cases Without Earned Income	7,621	7,504	7,425	7,510	6,826	6,713	7,151	7,842	8,262	9,411	8,605	6,261
■ Cases With Earned Income	6,411	6,484	6,347	6,255	5,993	5,978	5,858	5,738	5,614	5,411	4,754	3,367
TOTAL Target Group Cases	14,032	13,988	13,772	13,765	12,819	12,691	13,009	13,580	13,876	14,822	13,359	9,628

*State totals do not include all pilot, extended pilot and Wave 1 Bridges counties.

ALL COUNTIES - EARNED INCOME REPORT, MARCH 2009

COUNTY	Bridges Status	Total FIP Caseload	Number Open < 60 Days	Number of Work First Deferred Cases	TARGET GROUP CASES		
					Number of Cases	Percent With Earned Income	Percent Without Earned Income
1 Alcona-Wave 1	1	21	6	7	8	25%	75%
2 Alger		22	3	13	6	1%	99%
3 Allegan-Wave 1	1	15	1	10	4	25%	75%
4 Alpena-Wave 1	1	187	39	106	42	55%	45%
5 Antrim-Wave 1	1	23	5	18	0	0%	0%
6 Arenac		87	8	44	35	54%	46%
7 Baraga		46	14	22	10	40%	60%
8 Barry-Extended Pilot	XP	BRIDGES	BRIDGES	BRIDGES	BRIDGES	BRIDGES	BRIDGES
9 Bay		600	109	282	209	48%	52%
10 Benzie-Wave 1	1	54	14	13	27	37%	63%
11 Berrien-Wave 1	1	32	1	26	5	0%	100%
12 Branch		253	53	69	131	47%	53%
13 Calhoun**-Pilot	P	BRIDGES	BRIDGES	BRIDGES	BRIDGES	BRIDGES	BRIDGES
14 Cass-Wave 1	1	10	0	5	5	20%	80%
15 Charlevoix-*Wave 1	1						
16 Cheboygan-Wave 1	1	80	15	54	11	55%	45%
17 Chippewa		130	29	60	41	44%	56%
18 Clare		217	36	132	49	29%	71%
19 Clinton-Wave 1	1						
20 Crawford-Wave 1	1	47	12	28	7	43%	50%
21 Delta		121	21	64	36	50%	50%
22 Dickinson		60	23	26	11	82%	18%
23 Eaton-Extended Pilot	XP	BRIDGES	BRIDGES	BRIDGES	BRIDGES	BRIDGES	BRIDGES
24 Emmet-Wave 1	1	87	22	52	13	31%	69%
25 Genesee		5,765	745	2,317	2,703	26%	74%
26 Gladwin		160	34	76	50	42%	58%
27 Gogebic		164	19	55	90	43%	57%
28 Grand Traverse-Wave 1	1	129	27	74	28	36%	64%
29 Gratiot-Wave 1	1						
30 Hillsdale		223	60	101	62	39%	61%
31 Houghton		63	15	35	13	62%	38%
32 Huron		96	16	57	23	48%	52%
33 Ingham-Extended Pilo	XP	BRIDGES	BRIDGES	BRIDGES	BRIDGES	BRIDGES	BRIDGES
34 Ionia-Wave 1	1	4	1	2	1	0%	100%
35 Iosco-Wave 1	1	138	24	66	48	35%	65%
36 Iron		49	13	17	19	42%	58%
37 Isabella		146	26	88	32	56%	44%
38 Jackson-Wave 1	1	30	8	12	10	30%	70%
39 Kalamazoo-Wave 1	1	36	4	26	6	50%	50%
40 Kalkaska-Wave 1	1	71	20	27	24	38%	62%
41 Kent		3,984	700	2,179	1,105	34%	66%
42 Keweenaw		2	0	1	1	0%	0%

Note: Percents may not add due to rounding. Absolute integrity of the data cannot be assured (effc.11/03) until systems are updated.

ALL COUNTIES - EARNED INCOME REPORT, MARCH 2009

COUNTY	Bridges Status	Total FIP Caseload	Number Open < 60 Days	Number of Work First Deferred Cases	TARGET GROUP CASES		
					Number of Cases	Percent With Earned Income	Percent Without Earned Income
43 Lake-Wave 1	1	0					100%
44 Lapeer		255	43	139	73	37%	63%
45 Leelanau-Wave 1	1						
46 Lenawee		359	71	195	93	46%	54%
47 Livingston		204	34	117	53	58%	42%
48 Luce		49	11	11	27	22%	78%
49 Mackinac		17	4	9	4	50%	50%
50 Macomb		3,102	568	1,339	1,195	33%	67%
51 Manistee-Wave 1	1	119	22	57	40	35%	65%
52 Marquette		178	50	104	24	46%	54%
53 Mason-Wave 1	1	1	0	1	0	0%	100%
54 Mecosta-Wave 1	1	0					100%
55 Menominee		48	5	32	11	45%	55%
56 Midland		227	44	143	40	52%	48%
57 Missaukee-Wave 1	1						
58 Monroe		638	124	384	130	46%	54%
59 Montcalm-Wave 1	1	7	2	1	4	50%	50%
60 Montmorency-Wave 1	1	33	4	23	6	17%	83%
61 Muskegon-Wave 1	1	65	8	29	28	25%	75%
62 Newaygo-Wave 1	1	5	1	3	1	0%	100%
63 Oakland		3,309	602	1,661	1,046	42%	58%
64 Oceana-Wave 1	1	4	1	2	1	0%	100%
65 Ogemaw-Wave 1	1	126	21	80	25	28%	72%
66 Ontonagon		20	7	7	6	67%	33%
67 Osceola-Wave 1	1	0					
68 Oscoda-Wave 1	1	42	7	22	13	38%	62%
69 Otsego-Wave 1	1	103	19	67	17	65%	35%
70 Ottawa-Wave 1	1	12	3	7	2	0%	100%
71 Presque Isle-Wave 1	1	36	5	20	11	36%	64%
72 Roscommon-Wave 1	1	137	29	83	25	44%	56%
73 Saginaw		2,447	359	962	1,126	35%	65%
74 St. Clair		838	192	423	223	35%	65%
75 St. Joseph-Wave 1	1	5	0	5	0	0%	100%
76 Sanilac		166	30	86	50	44%	56%
77 Schoolcraft		45	13	18	14	29%	71%
78 Shiawassee		328	74	156	98	51%	49%
79 Tuscola		236	38	155	43	37%	63%
80 Van Buren-Wave 1	1	11	2	6	3	33%	67%
81 Washtenaw		996	178	534	284	50%	50%
82 Wayne		27,418	3,253	13,191	10,974	31%	69%
83 Wexford-Wave 1	1	222	43	136	43	53%	47%
Statewide Total	40	54,960	7,993	26,395	20,602	33%	67%

Note: Percents may not add due to rounding.

ALL COUNTIES - EARNED INCOME REPORT, MARCH 2009

WAYNE COUNTY DISTRICT OFFICES	Bridges Status	Total FIP Caseload	Number Open < 60 Days	Number of Work First Deferred Cases	TARGET GROUP CASES		
					Number of Cases	Percent With Earned Income	Percent Without Earned Income
ZONE VIII**							
13 Redford		<i>closed</i>	<i>closed</i>	<i>closed</i>	<i>closed</i>	<i>closed</i>	<i>closed</i>
14 Lincoln Park		<i>closed</i>	<i>closed</i>	<i>closed</i>	<i>closed</i>	<i>closed</i>	<i>closed</i>
15 Greydale		2,219	271	1,058	890	33%	67%
17 Greenfield/Joy		2,318	242	1,277	799	28%	72%
18 Taylor		1,212	199	683	330	38%	62%
19 Inkster		1,939	308	1,000	631	37%	63%
32 Tireman		<i>closed</i>	<i>closed</i>	<i>closed</i>	<i>closed</i>	<i>closed</i>	<i>closed</i>
35 Schoolcraft		3,322	364	1,454	1,504	33%	67%
39 Fullerton		<i>closed</i>	<i>closed</i>	<i>closed</i>	<i>closed</i>	<i>closed</i>	<i>closed</i>
TOTAL		11,010	1,384	5,472	4,154	33%	67%
ZONE IX**							
41 Fort Wayne		2,317	334	1,421	562	30%	70%
43 Glendale		1,980	242	961	777	30%	70%
49 Grand River/Warren		2,605	263	1,115	1,227	31%	69%
55 Hamtramck		984	84	494	406	36%	64%
56 Highland Park		<i>closed</i>	<i>closed</i>	<i>closed</i>	<i>closed</i>	<i>closed</i>	<i>closed</i>
57 Medbury		2,127	225	885	1,017	30%	70%
58 Lafayette***		1,137	118	577	442	35%	65%
59 McNichols/Goddard		1,179	137	451	591	31%	69%
73 Forest/Elery		1,301	124	574	603	29%	71%
74 Kercheval		<i>closed</i>	<i>closed</i>	<i>closed</i>	<i>closed</i>	<i>closed</i>	<i>closed</i>
76 Maddelein		2,757	334	1,231	1,192	24%	76%
79 Warren/Conner		<i>closed</i>	<i>closed</i>	<i>closed</i>	<i>closed</i>	<i>closed</i>	<i>closed</i>
80 Lafayette/Hospital Corridor		N/A	N/A	N/A	N/A	N/A	N/A
TOTAL		16,387	1,861	7,709	6,817	30%	70%
99 WAYNE - OTHER		21	8	10	3	0%	100%
WAYNE COUNTY TOTAL		27,418	3,253	13,191	10,974	31%	69%
OUTSTATE TOTAL		27,546	4,740	13,204	9,628	36%	64%
STATE TOTALS		54,964	7,990	26,372	20,602	33%	67%
PROJECT SITE TOTAL		54,964	7,990	26,372	20,602	33%	67%

** Wayne County Districts have been realigned into Administrative Regions VIII and IX as outlined above.

*** District 58 was added on August 18, 2003.

Note: Percents may not add due to rounding.

[RML]EIR/Pages 6-8/March 09

ALL COUNTIES - CASES WITHOUT EARNED INCOME

COUNTY	JULY, 1996			February, 2009			MARCH, 2009			
	Target Group Cases	Number Without Earned Income	Percent Without Earned Income	Target Group Cases	Number Without Earned Income	Percent Without Earned Income	Target Group Cases	Number Without Earned Income	Percent Without Earned Income	Percent Change From Previous Month
1 Alcona-Wave 1	73	26	36%	10	7	0%	8	6	75%	0%
2 Alger	53	23	43%	6	1	0%	6	1	17%	0%
3 Allegan-Wave 1	402	217	54%	99	53	54%	4	3	75%	-94%
4 Alpena-Wave 1	294	106	36%	44	20	45%	42	19	45%	-5%
5 Antrim-Wave 1	80	36	45%	1	0	0%	0	0	0%	0%
6 Arenac	175	75	43%	33	16	48%	35	16	46%	0%
7 Baraga	104	54	52%	8	5	0%	10	6	60%	20%
8 Barry-Extended Pilot	254	114	45%	BRIDGES	BRIDGES	BRIDGES	BRIDGES	BRIDGES	NA	NA
9 Bay	1,397	566	41%	229	126	55%	209	109	52%	-13%
10 Benzie-Wave 1	46	19	41%	17	10	59%	27	17	63%	70%
11 Berrien-Wave 1	2,031	1,073	53%	330	219	66%	5	5	100%	-98%
12 Branch	245	131	53%	128	73	57%	131	70	53%	-4%
13 Calhoun-Pilot	1,681	913	54%	BRIDGES	BRIDGES	BRIDGES	BRIDGES	BRIDGES	NA	NA
14 Cass-Wave 1	471	307	65%	78	53	68%	5	4	80%	-92%
15 Charlevoix-Wave 1	75	33	44%							
16 Cheboygan-Wave 1	160	58	36%	11	5	45%	11	5	0%	-100%
17 Chippewa	233	115	49%	49	22	45%	41	23	45%	-77%
18 Clare	495	242	49%	68	48	71%	49	35	56%	-52%
19 Clinton-Wave 1	223	91	41%	14	4	29%			0%	0%
20 Crawford-Wave 1	159	65	41%	11	6	55%	7	4	0%	-100%
21 Delta	411	207	50%	42	24	57%	36	18	57%	-83%
22 Dickinson	185	105	57%	10	2	20%	11	2	50%	0%
23 Eaton-Extended Pilot	463	234	51%	BRIDGES	BRIDGES	BRIDGES	BRIDGES	BRIDGES	NA	NA
24 Emmet-Wave 1	102	40	39%	14	7	0%	13	9	69%	0%
25 Genesee	9,926	6,135	62%	2,748	2,017	73%	2,703	2,011	74%	0%
26 Gladwin	269	91	34%	53	32	60%	50	29	58%	-9%
27 Gogebic	220	144	65%	92	52	57%	90	51	57%	-2%
28 Grand Traverse-Wave 1	201	87	43%	29	22	76%	28	18	64%	-18%
29 Gratiot-Wave 1	378	201	53%	50	20	40%	62	38	61%	90%
30 Hillsdale	228	129	57%	63	41	65%	13	5	38%	-88%
31 Houghton	307	118	38%	10	3	30%	23	12	52%	300%
32 Huron	196	76	39%	22	12	55%	3	2	67%	-83%
33 Ingham-Extended Pilot	3,323	1,595	48%	BRIDGES	BRIDGES	BRIDGES	BRIDGES	BRIDGES	BRIDGES	BRIDGES
34 Ionia-Wave 1	355	179	50%	63	46	73%	1	1	100%	-98%
35 Iosco-Wave 1	194	87	45%	45	27	60%	48	31	65%	15%
36 Iron	97	45	46%	13	7	54%	19	11	58%	57%
37 Isabella	420	206	49%	47	23	49%	32	14	44%	-39%
38 Jackson-Wave 1	1,620	895	55%	310	205	66%	10	7	70%	-97%
39 Kalamazoo-Wave 1	2,054	1,225	60%	506	268	53%	6	3	50%	-99%
40 Kalkaska-Wave 1	68	34	50%	19	11	0%	24	15	63%	36%
41 Kent	3,889	2,383	61%	1,204	764	63%	1,105	733	66%	-4%
42 Keweenaw	4	2	50%	2	2	0%	1	1	0%	0%

Note: Percents may not add due to rounding.

* Calhoun County data unavailable due to the implementation of Bridges.

[rm]EIR/Pages 10-11-March 09.xls

ALL COUNTIES - CASES WITHOUT EARNED INCOME

COUNTY	JULY, 1996			February, 2009			MARCH, 2009			
	Target Group Cases	Number Without Earned Income	Percent Without Earned Income	Target Group Cases	Number Without Earned Income	Percent Without Earned Income	Target Group Cases	Number Without Earned Income	Percent Without Earned Income	Percent Change From Previous Month
43 Lake-Wave 1	159	91	57%	12	5	42%	0	0	0%	-100%
44 Lapeer	309	134	43%	70	47	67%	73	46	63%	-2%
45 Leelanau-Wave 1	25	11	44%							
46 Lenawee	697	392	56%	91	44	48%	93	50	54%	14%
47 Livingston	272	141	52%	52	20	38%	53	22	42%	10%
48 Luce	74	35	47%	31	25	81%	27	21	78%	-16%
49 Mackinac	44	23	52%	3	2	0%	4	2	0%	0%
50 Macomb	3,358	1,791	53%	1,135	748	66%	1,195	802	67%	7%
51 Manistee-Wave 1	199	94	47%	37	20	54%	40	26	65%	30%
52 Marquette	481	183	38%	34	18	53%	24	13	54%	-28%
53 Mason-Wave 1	222	101	45%	23	11	48%	0	0	0%	-100%
54 Mecosta-Wave 1	384	206	54%	47	24	51%				
55 Menominee	116	57	49%	13	7	54%	11	6	55%	-14%
56 Midland	676	284	42%	38	18	47%	40	19	48%	6%
57 Missaukee-Wave 1	127	54	43%							
58 Monroe	948	466	49%	130	75	58%	130	70	54%	-7%
59 Montcalm-Wave 1	422	229	54%	66	44	67%	4	2	50%	-95%
60 Montmorency-Wave 1	86	30	35%	4	4	100%	6	5	83%	0%
61 Muskegon-Wave 1	2,344	1,370	58%	1,458	1,040	71%	28	21	75%	-98%
62 Newaygo-Wave 1	297	183	62%	38	19	50%	1	1	100%	-95%
63 Oakland	6,042	3,631	60%	1,144	683	60%	1,046	603	58%	-12%
64 Oceana-Wave 1	191	83	43%	107	77	72%	1	1	100%	-99%
65 Ogemaw-Wave 1	268	97	36%	21	12	57%	25	18	72%	50%
66 Ontonagon	60	34	57%	6	2	33%	6	2	33%	0%
67 Osceola-Wave 1	266	141	53%							
68 Oscoda-Wave 1	91	44	48%	8	5	63%	13	8	62%	0%
69 Otsego-Wave 1	72	33	46%	27	8	30%	17	6	35%	-25%
70 Ottawa-Wave 1	376	161	43%	91	50	55%	2	2	100%	-96%
71 Presque Isle-Wave 1	65	24	37%	8	3	0%	11	7	64%	0%
72 Roscommon-Wave 1	307	118	38%	25	12	48%	25	14	56%	17%
73 Saginaw	4,616	2,435	53%	1,121	718	64%	1,126	737	65%	3%
74 St. Clair	1,207	587	49%	239	158	66%	223	146	65%	-8%
75 St. Joseph-Wave 1	396	248	63%	131	88	67%	0	0	0%	0%
76 Sanilac	224	85	38%	48	30	63%	50	28	56%	-7%
77 Schoolcraft	121	66	55%	11	8	73%	14	10	71%	25%
78 Shiawassee	488	223	46%	104	55	53%	98	48	49%	-13%
79 Tuscola	355	155	44%	49	30	61%	43	27	63%	-10%
80 Van Buren-Wave 1	756	396	52%	120	79	66%	3	2	67%	-97%
81 Washtenaw	1,663	970	58%	290	136	47%	284	142	50%	4%
82 Wayne	60,090	46,029	77%	10,976	7,329	67%	10,974	7,551	69%	3%
83 Wexford-Wave 1	242	117	48%	38	21	55%	43	20	47%	-5%
Statewide Total	122,697	80,034	65%	24,325	15,928	65%	20,602	13,812	67%	-13%

* Missaukee County is now part of a dual county - Missaukee/Wexford - and data is combined under Wexford.
 Note : Percents may not add due to rounding.

[rm]EIR/Pages 10-11-March 09.xls

ALL COUNTIES - CASES WITHOUT EARNED INCOME

WAYNE COUNTY DISTRICT OFFICES	JULY, 1996			February, 2009			MARCH, 2009			
	Target Group Cases	Number Without Earned Income	Percent Without Earned Income	Target Group Cases	Number Without Earned Income	Percent Without Earned Income	Target Group Cases	Number Without Earned Income	Percent Without Earned Income	Percent Change From Previous Month
ZONE VIII*										
13 Redford	2,181	1,520	70%	closed	closed	closed	closed	closed	closed	closed
14 Lincoln Park	1,946	1,303	67%	closed	closed	closed	closed	closed	closed	closed
15 Greydale/Grand River	3,115	2,473	79%	995	646	65%	890	599	67%	-7%
17 Greenfield/Joy	2,977	2,352	79%	820	573	70%	799	573	72%	0%
18 Taylor	1,988	1,203	61%	358	213	59%	330	204	62%	-4%
19 Inkster	2,826	1,813	64%	631	371	59%	631	395	63%	6%
32 Tireman/Central	1,921	1,458	76%	closed	closed	closed	closed	closed	closed	closed
35 Schoolcraft/Stansbury	3,032	2,349	77%	1,402	921	66%	1,504	1,001	67%	9%
39 Fullerton/Jeffries	2,677	2,199	82%	closed	closed	closed	closed	closed	closed	closed
TOTAL	22,663	16,670	74%	4,206	2,724	65%	4,154	2,772	67%	2%
ZONE IX*										
41 Fort Wayne	2,664	2,038	77%	542	359	66%	562	395	70%	10%
43 Glendale	1,511	1,119	74%	735	488	66%	777	542	70%	11%
49 Grand River/Warren	1,677	1,360	81%	1,238	805	65%	1,227	841	69%	4%
55 Hamtramck	2,204	1,710	78%	417	259	62%	406	258	64%	0%
56 Highland Park	1,844	1,480	80%	closed	closed	closed	closed	closed	closed	closed
57 Medbury	1,950	1,588	81%	1,008	696	69%	1,017	709	70%	2%
58 Lafayette*				477	304	64%	442	287	65%	-6%
59 McNichols/Goddard	3,332	2,674	80%	657	450	68%	591	410	69%	-9%
73 Forest/Ellery	1,534	1,156	75%	583	409	70%	603	428	71%	5%
74 Kercheval	1,684	1,265	75%	closed	closed	closed	closed	closed	closed	closed
76 Maddelein				1,111	833	75%	1,192	906	76%	9%
79 Warren/Conner	1,997	1,682	84%	closed	closed	closed	closed	closed	closed	closed
80 Lafayette/Hospital Corridor	N/A	N/A	N/A	N/A	N/A	N/A	N/A	N/A	N/A	N/A
TOTAL	20,397	16,072	79%	6,768	4,603	68%	6,817	4,776	70%	4%
99 WAYNE - OTHER	126	71	11%	2	2	100%	3	3	100%	0%
WAYNE COUNTY TOTAL	60,090	46,029	77%	10,976	7,329	67%	10,974	7,551	69%	3%
OUTSTATE TOTAL	62,607	34,005	54%	13,349	8,599	64%	9,628	6,261	65%	-27%
STATE TOTALS	122,697	80,034	65%	24,375	15,928	65%	20,602	13,812	67%	-13%
PROJECT SITE TOTAL	4,691	2,807	60%	24,375	15,928	65%	20,602	13,812	67%	-13%

* Wayne County Districts have been realigned into Administrative Regions VIII and IX as outlined above. New District 58 was added on 8/14/03.

Note: Percents may not add due to rounding.

[rm]EIR/Pages 10-11-March 09.xls

ALL COUNTIES - EARNED INCOME REPORT, MARCH 2009

COUNTY	Bridges Status	Total FIP Caseload	Number Open < 60 Days	Number of Work First Deferred Cases	TARGET GROUP CASES		
					Number of Cases	Percent With Earned Income	Percent Without Earned Income
43 Lake-Wave 1	1	0					100%
44 Lapeer		0					100%
45 Leelanau-Wave 1	1						
46 Lenawee		0					100%
47 Livingston		0					100%
48 Luce		0					100%
49 Mackinac		0					100%
50 Macomb		0					100%
51 Manistee-Wave 1	1	0					100%
52 Marquette		0					100%
53 Mason-Wave 1	1	0					100%
54 Mecosta-Wave 1	1	0					100%
55 Menominee		0					100%
56 Midland		0					100%
57 Missaukee-Wave 1	1						
58 Monroe		0					100%
59 Montcalm-Wave 1	1	0					100%
60 Montmorency-Wave 1	1	0					100%
61 Muskegon-Wave 1	1	0					100%
62 Newaygo-Wave 1	1	0					100%
63 Oakland		0					100%
64 Oceana-Wave 1	1	0					100%
65 Ogemaw-Wave 1	1	0					100%
66 Ontonagon		0					100%
67 Osceola-Wave 1	1	0					
68 Oscoda-Wave 1	1	0					100%
69 Otsego-Wave 1	1	0					100%
70 Ottawa-Wave 1	1	0					100%
71 Presque Isle-Wave 1	1	0					100%
72 Roscommon-Wave 1	1	0					100%
73 Saginaw		0					100%
74 St. Clair		0					100%
75 St. Joseph-Wave 1	1	0					100%
76 Sanilac		0					100%
77 Schoolcraft		0					100%
78 Shiawassee		0					100%
79 Tuscola		0					100%
80 Van Buren-Wave 1	1	0					100%
81 Washtenaw		0					100%
82 Wayne		0					100%
83 Wexford-Wave 1	1	0					100%
Statewide Total	40	0	0	0	0		100%

Note: Percents may not add due to rounding.

ALL COUNTIES - EARNED INCOME REPORT, MARCH 2009

WAYNE COUNTY DISTRICT OFFICES	Bridges Status	Total FIP Caseload	Number Open < 60 Days	Number of Work First Deferred Cases	TARGET GROUP CASES		
					Number of Cases	Percent With Earned Income	Percent Without Earned Income
ZONE VIII**							
13 Redford		<i>closed</i>	<i>closed</i>	<i>closed</i>	<i>closed</i>	<i>closed</i>	<i>closed</i>
14 Lincoln Park		<i>closed</i>	<i>closed</i>	<i>closed</i>	<i>closed</i>	<i>closed</i>	<i>closed</i>
15 Greydale		0					100%
17 Greenfield/Joy		0					100%
18 Taylor		0					100%
19 Inkster		0					100%
32 Tireman		<i>closed</i>	<i>closed</i>	<i>closed</i>	<i>closed</i>	<i>closed</i>	<i>closed</i>
35 Schoolcraft		0					100%
39 Fullerton		<i>closed</i>	<i>closed</i>	<i>closed</i>	<i>closed</i>	<i>closed</i>	<i>closed</i>
TOTAL	0	0	0	0	0		100%
ZONE IX**							
41 Fort Wayne		0					100%
43 Glendale		0					100%
49 Grand River/Warren		0					100%
55 Hamtramck		0					100%
56 Highland Park		<i>closed</i>	<i>closed</i>	<i>closed</i>	<i>closed</i>	<i>closed</i>	<i>closed</i>
57 Medbury		0					100%
58 Lafayette***		0					100%
59 McNichols/Goddard		0					100%
73 Forest/Ellery		0					100%
74 Kercheval		<i>closed</i>	<i>closed</i>	<i>closed</i>	<i>closed</i>	<i>closed</i>	<i>closed</i>
76 Maddelein		0					100%
79 Warren/Conner		<i>closed</i>	<i>closed</i>	<i>closed</i>	<i>closed</i>	<i>closed</i>	<i>closed</i>
80 Lafayette/Hospital Corridor		N/A	N/A	N/A	N/A	N/A	N/A
TOTAL	0	0	0	0	0		100%
99 WAYNE - OTHER		0					100%
WAYNE COUNTY TOTAL		0	0	0	0	33%	67%
OUTSTATE TOTAL		0	0	0	0	36%	64%
STATE TOTALS		0	0	0	0	35%	65%
PROJECT SITE TOTAL		0	0	0	0	35%	65%

** Wayne County Districts have been realigned into Administrative Regions VIII and IX as outlined above.

*** District 58 was added on August 18, 2003.

Note: Percents may not add due to rounding.

[RML]EIR/Pages 6-8/March 09