



DTMB

Department of Technology,
Management & Budget
Facilities Administration
Design & Construction Division

Fact Sheet

March 2010

SOIL EROSION & SEDIMENTATION CONTROL (SESC) PROGRAM

Overview

Pursuant to Part 91 of 1994 PA 451, Soil Erosion and Sedimentation Control (SESC), formerly 1972 PA 347, as amended, the Department of Technology, Management and Budget (DTMB) has established SESC procedures to provide effective soil erosion and sediment control, inspection and enforcement on State of Michigan construction projects. These procedures and guidelines are provided in detail in the DTMB [Soil Erosion and Sedimentation Control Guidebook](#).

As an Authorized Public Agency (APA), the DTMB is responsible for controlling erosion and sedimentation on all DTMB construction projects. During the planning/design stage, each project will be evaluated to determine if Part 91 requirements are applicable. When the project involves an earth change in excess of 1 acre or is within 500 feet of a waterbody, the DTMB Design and Construction Division will implement these procedures. For each project involving an earth change, potential SESC problem areas will be identified and a comprehensive SESC plan developed to minimize erosion and off-site sedimentation. The plan will show the quantity, type and location of each control measure including construction sequencing, provide installation and maintenance schedules, and provide installation details or specifications. The plan or bid document will also provide for miscellaneous materials or quantities to address unanticipated control needs. Best Management Practices recommended by DTMB along with

details and specifications can be found in the DTMB SESC Guidebook. A compact disc accompanies the Guidebook where the details and specifications are available in pdf format as well as AutoCAD.

Plan Review

The DTMB SESC Program shall review the SESC plans at 90% to assure that the architect/engineer has included at a minimum all the information required in R323.1703 of Part 91. At least two weeks should be allowed for the review process. The following are a few, but not all of the items, that shall be considered in the SESC plan:

- ⌚ Permanent SESC shall be installed within 5 days of final grade
- ⌚ Erosion control blanket will be utilized on slopes steeper than 1:4
- ⌚ Dust control and street sweeping shall be considered
- ⌚ Impacted storm inlets shall be protected

Implementation Plan and Authorization to Proceed with Earth Change

Following the award of a contract the contractor shall prepare and issue for approval an "SESC Implementation Plan", which indicates the contractor's intended implementation of SESC on the project including a schedule and sequence. The SESC Program, upon approval of the implementation plan, will issue to the contractor an "Authorization to Proceed with Earth Change" document, which is to be posted at the jobsite. This document is issued in lieu of a permit

from the county. Earthwork shall not begin prior to the issuance of this Authorization.

Inspections

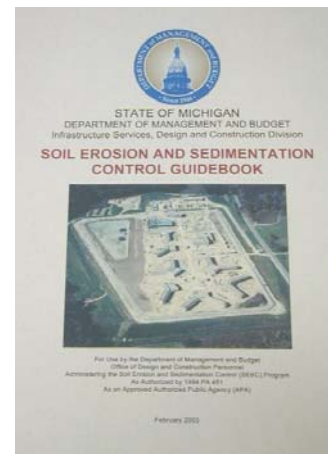
DTMB inspectors will conduct SESC inspections with support from the SESC Program. Project Contractors shall continuously monitor the project site and adjacent areas for ineffective SESC measures and conduct regular maintenance. **NOTE:** The DTMB inspections are not to take the place of the contractor's own SESC inspections, but rather to verify that the contractor is following regulations, plans and specifications, conducting regular maintenance activities and that the SESC plan is sufficient for the current site conditions. The DTMB inspector will write a report documenting his/her observations and recommendations. The contractor will be made aware of any issues with maintenance or improper installation of soil erosion and sedimentation controls at time of inspection. Copies of the reports are distributed to the architect/engineer, and the Project Manager to interpret and give the contractor direction if necessary. The contractor does NOT receive a copy of the report; the architect/engineer is responsible for relaying the report to the contractor.

Enforcement

Construction contracts, especially those with Performance Bonds, contain language that allows DTMB to impose fines of at least \$500 per day and assess actual damage costs if the contractor refuses to comply with SESC requirements and corrective measures contained in the construction contract. For bonded projects, the Surety Company shall be held responsible for these costs in the event the contractor refuses to perform or is found to be in default. The SESC Program Manager is empowered to direct the contractor to perform SESC corrective measures.

Soil Erosion and Sedimentation Control Guidebook

The DTMB SESC Control Guidebook is a resource created by the Design and Construction Division to assist architects, engineers and contractors in maintaining control of soil erosion and sediment on State of Michigan construction projects. The details and specifications contained within the SESC manual and the accompanying compact disc (CD) are designed to provide standard guidelines for the design of soil erosion and sedimentation controls into State of Michigan, Department of Technology, Management and Budget administered construction plans and specifications.



Contact

To obtain a copy of the [DTMB SESC Guidebook](http://www.michigan.gov/dmb/0,1607,7-150-41516-155023--,00.html), please contact our office or complete the SESC Guidebook Order Form. For copies of the order form, implementation plan checklist and this fact sheet, visit <http://www.michigan.gov/dmb/0,1607,7-150-41516-155023--,00.html>. The DTMB SESC Program is prepared to provide technical support, inspection assistance or answer any questions regarding the program.

**DTMB – Facilities Administration
Design & Construction Division
Attn: SESC Program
Stevens T Mason Bldg, 2nd Fl.
P.O. Box 30026
Lansing, Michigan 48909
517.335.1451**