

APPENDIX J

Fire Insurance Maps



EDR® Environmental
Data Resources Inc

"Linking Technology with Tradition"®

Sanborn® Map Report

Ship To: Steve Young
Materials Testing
693 Plymouth NE
Grand Rapids, MI 49505

Order Date: 3/12/2007 **Completion Date:** 3/12/2007

Inquiry #: 1875393.3s

P.O. #: NA

Site Name: Michigan State Fairgrounds

Address: 1120 W. State Fair Ave

City/State: Detroit, MI 48203

Cross Streets:

Customer Project: 061586
1011807MEN 616-456-5469

Based on client-supplied information, fire insurance maps for the following years were identified

1910 - 1 Map	1987 - 2 Maps
1915 - 1 Map	1990 - 2 Maps
1950 - 2 Maps	1993 - 2 Maps
1952 - 2 Maps	
1957 - 2 Maps	
1961 - 2 Maps	
1978 - 2 Maps	
1984 - 2 Maps	

Limited Permission to Photocopy

Total Maps: 20

Materials Testing Consultants (the client) is permitted to make up to THREE photocopies of this Sanborn Map transmittal and each fire insurance map accompanying this report solely for the limited use of its customer. No one other than the client is authorized to make copies. Upon request made directly to an EDR Account Executive, the client may be permitted to make a limited number of additional photocopies. This permission is conditioned upon compliance by the client, its customer and their agents with EDR's copyright policy; a copy of which is available upon request.

This Report contains certain information obtained from a variety of public and other sources reasonably available to Environmental Data Resources, Inc. It cannot be concluded from this Report that coverage information for the target and surrounding properties does not exist from other sources. NO WARRANTY EXPRESSED OR IMPLIED, IS MADE WHATSOEVER IN CONNECTION WITH THIS REPORT. ENVIRONMENTAL DATA RESOURCES, INC. SPECIFICALLY DISCLAIMS THE MAKING OF ANY SUCH WARRANTIES, INCLUDING WITHOUT LIMITATION, MERCHANTABILITY OR FITNESS FOR A PARTICULAR USE OR PURPOSE. ALL RISK IS ASSUMED BY THE USER. IN NO EVENT SHALL ENVIRONMENTAL DATA RESOURCES, INC. BE LIABLE TO ANYONE, WHETHER ARISING OUT OF ERRORS OR OMISSIONS, NEGLIGENCE, ACCIDENT OR ANY OTHER CAUSE, FOR ANY LOSS OF DAMAGE, INCLUDING, WITHOUT LIMITATION, SPECIAL, INCIDENTAL, CONSEQUENTIAL, OR EXEMPLARY DAMAGES. ANY LIABILITY ON THE PART OF ENVIRONMENTAL DATA RESOURCES, INC. IS STRICTLY LIMITED TO A REFUND OF THE AMOUNT PAID FOR THIS REPORT. Purchaser accepts this Report AS IS. Any analyses, estimates, ratings, environmental risk levels or risk codes provided in this Report are provided for illustrative purposes only, and are not intended to provide, nor should they be interpreted as providing any facts regarding, or prediction or forecast of, any environmental risk for any property. Only a Phase I Environmental Site Assessment performed by an environmental professional can provide information regarding the environmental risk for any property. Additionally, the information provided in this Report is not to be construed as legal advice.

Copyright 2007 by Environmental Data Resources, Inc. All rights reserved. Reproduction in any media or format, in whole or in part, of any report or map of Environmental Data Resources, Inc., or its affiliates, is prohibited without prior written permission. EDR and its logos (including Sanborn and Sanborn Map) are trademarks of Environmental Data Resources, Inc. or its affiliates. All other trademarks used herein are the property of their respective owners.

USER'S GUIDE

This User's Guide provides guidelines for accessing Sanborn Map® images and for transferring them to your Word Processor.

Reading Sanborn Maps

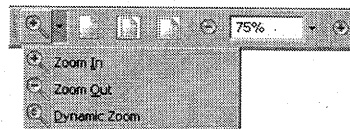
- Sanborn Maps document historical property use by displaying property information through words, abbreviations, and map symbols. The Sanborn Map Key provides information to help interpret the symbols and abbreviations used on Sanborn Maps. The Key is available from EDR's Web Site at: <http://www.edrnet.com/reports/samples/key.pdf>

Organization of Electronic Sanborn Image File

- Sanborn Map Report, listing years of coverage
- User's Guide
- Oldest Sanborn Map Image
- Most recent Sanborn Map Image

Navigating the Electronic Sanborn Image File

1. Open file on screen.
2. Identify TP (Target Property) on the most recent map.
3. Find TP on older printed images.
4. Using Acrobat® Reader®, zoom to 250% in order to view more clearly. (200-250% is the approximate equivalent scale of hardcopy Sanborn Maps.)
 - A. On the menu bar, click "View" and then "Zoom to..."
 - B. Or, use the magnifying tool and drag a box around the TP



Printing a Sanborn Map From the Electronic File

- EDR recommends printing images at 300 dpi (300 dpi prints faster than 600 dpi)
- To print only the TP area, cut and paste from Acrobat to your word processor application.

Acrobat Versions 6 and 7

1. Go to the menu bar
2. Click the "Select Tool"
3. Draw a box around the area selected
4. "Right click" on your mouse
5. Select "Copy Image to Clipboard"
6. Go to Word Processor such as Microsoft Word, paste and print.



Acrobat Version 5

1. Go to the menu bar
2. Click the "Graphics Select Tool"
3. Draw a box around the area selected
4. Go to "Menu"
5. Highlight "Edit"
6. Highlight "Copy"
7. Go to Word Processor such as Microsoft Word, paste and print.



Important Information about Email Delivery of Electronic Sanborn Map Images

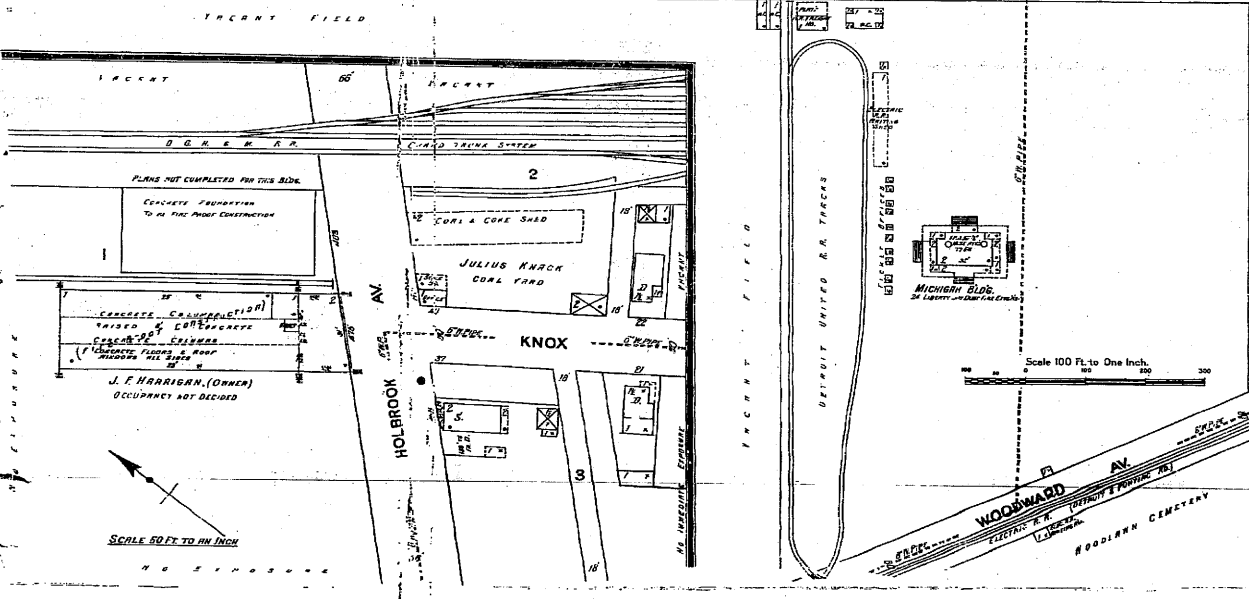
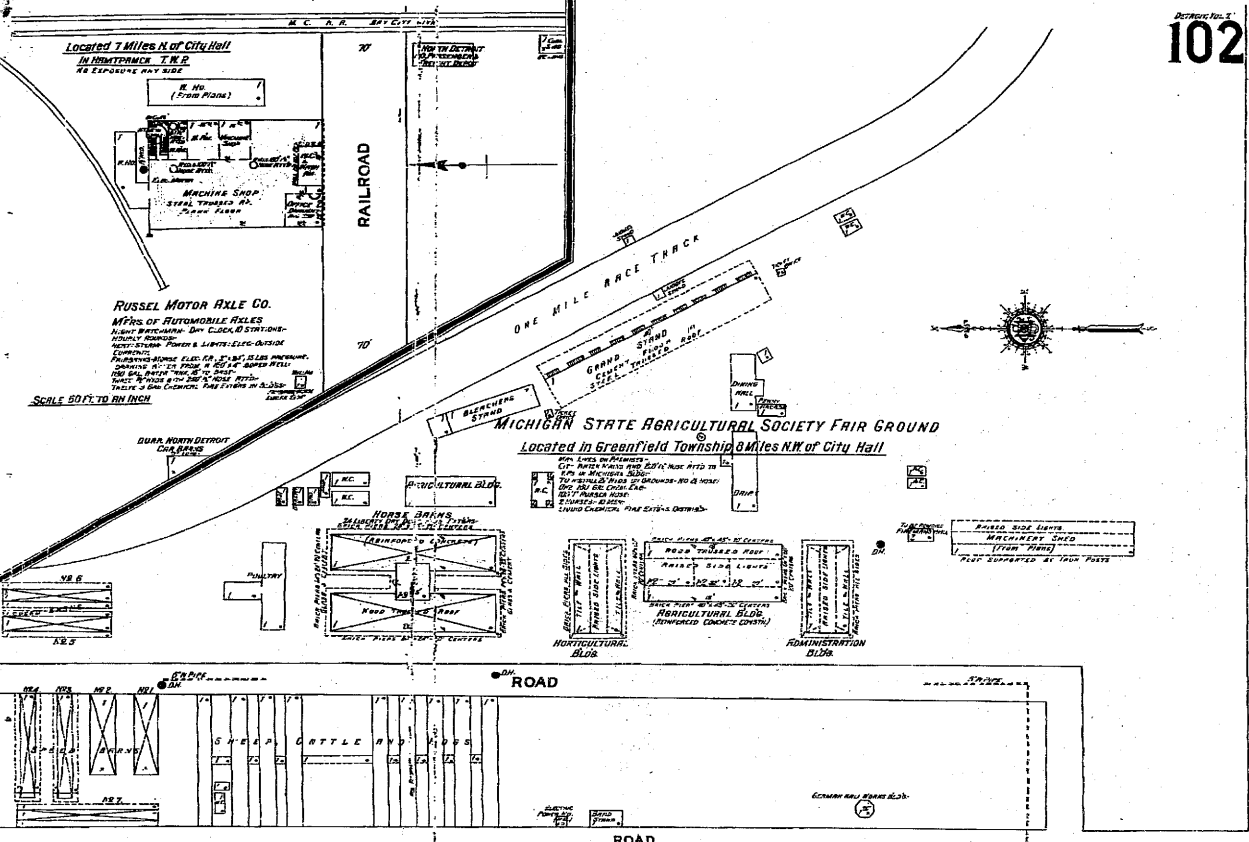
- Images are grouped into one file, up to 2MB.
- In cases where in excess of 6-7 map years are available, the file size typically exceeds 2MB. In these cases, you will receive multiple files, labeled as "1 of 3", "2 of 3", etc. including all available map years.
- Due to file size limitations, certain ISPs, including AOL, may occasionally delay or decline to deliver files. Please contact your ISP to identify their specific file size limitations.

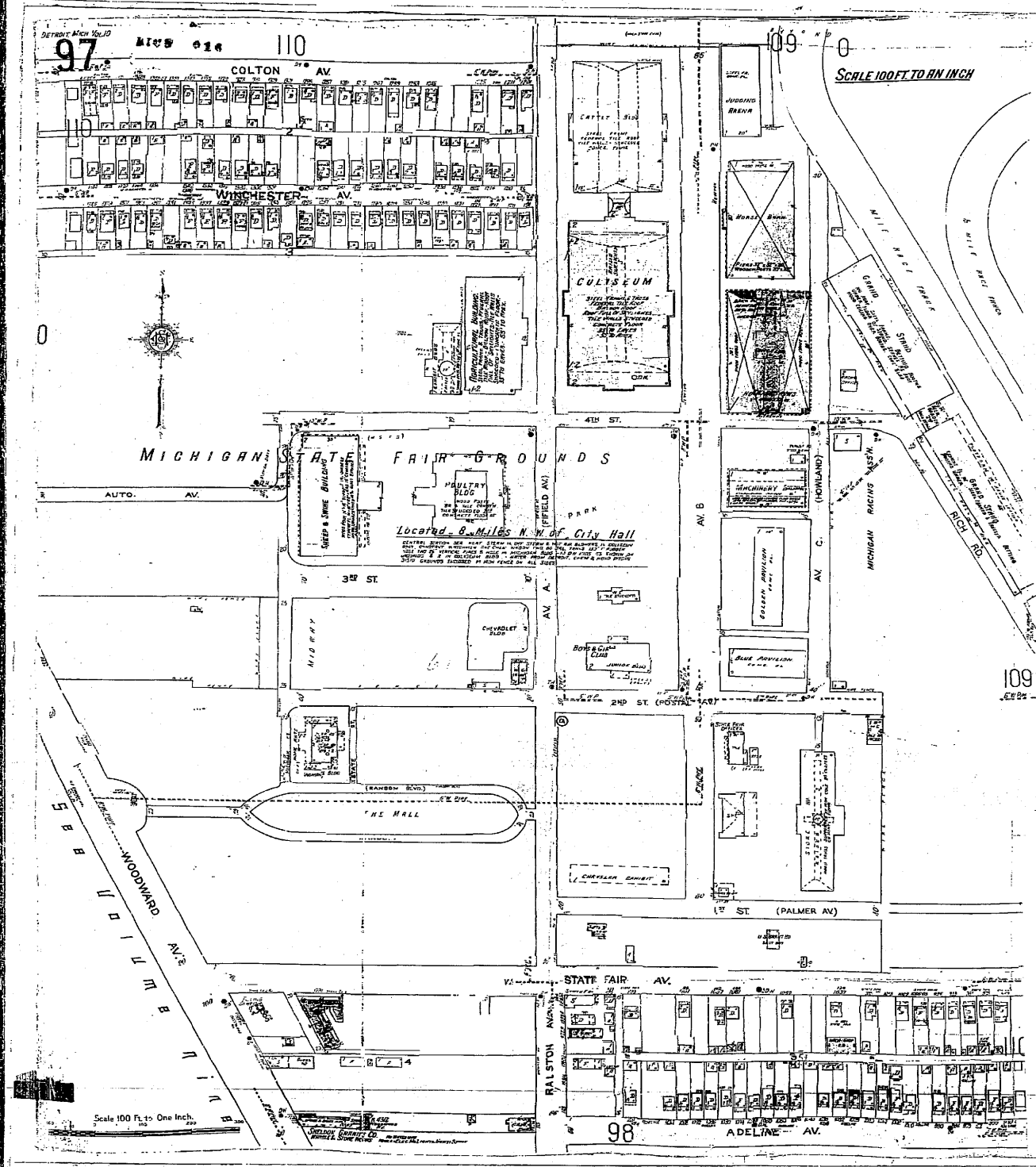
Located 1 Miles N of City Hall
IN HUNTERDICK TWP
NE CORNER MAY SIDE

RUSSEL MOTOR AXLE CO.
MFRS OF AUTOMOBILE AXLES
RIGHT BEARING, DAY CLOCKS STRONG-
HEAVY ROAD-
MOTOR DRUMS, PUMPS & LIGHTS-ELC-OUTSIDE
COURT-
CONCRETE FLOOR FLD. FOR 25,000 LBS. MACHINERY.
CONCRETE FLD. FOR 10,000 LBS. MACHINERY.
100 GAL. WATER TANK 10' DIA. HOOP
TANK 2' DIA. HOOP 10' DIA. HOOP
TANKS 2' DIA. HOOP 10' DIA. HOOP

SCALE 50 FT. TO AN INCH

MICHIGAN STATE AGRICULTURAL SOCIETY FAIR GROUND
Located in Greenfield Township 3 Miles N.W. of City Hall





SCALE 100 FT TO AN INCH

Scale 100 Ft to One Inch



The Sanborn Library, LLC

Copyright © 1950 The Sanborn Library, LLC LHE
Year EDR Research Associate

Reproduction in whole or in part of any map of The Sanborn Library, LLC may be prohibited without prior written permission from The Sanborn Library, LLC.



The Sanborn Library, LLC

Copyright © 1950 The Sanborn Library, LLC LHE
Year EDR Research Associate

Reproduction in whole or in part of any map of The Sanborn Library, LLC may be prohibited without prior written permission from The Sanborn Library, LLC.

109
NICE 16
ADDL SHEET 89
FEB. 1933
SCALE 100 FT. TO AN INCH
ENTIRE ST. EST.





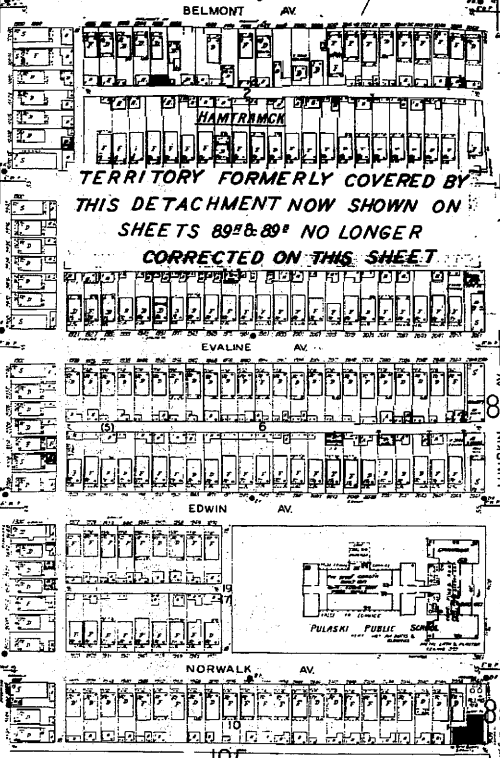
The Sanborn Library, LLC

Copyright © 1952 The Sanborn Library, LLC LHE
Year EDR Research Associate

Reproduction in whole or in part of any map of The Sanborn Library, LLC may be prohibited without prior written permission from The Sanborn Library, LLC.

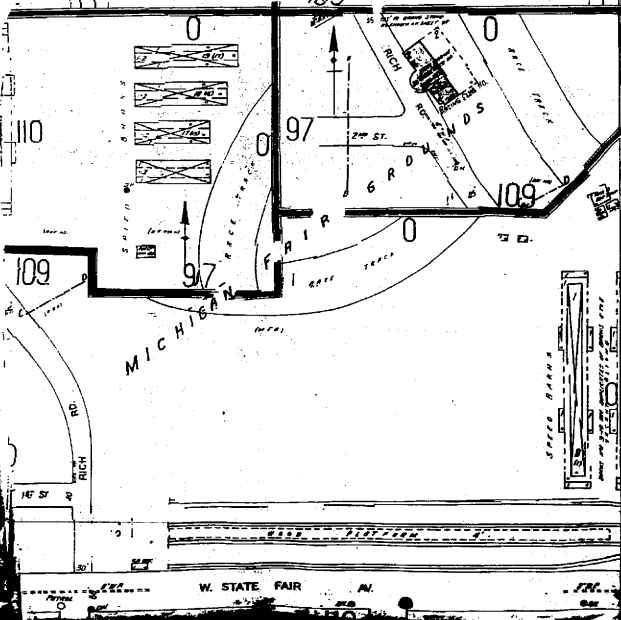
109

ADDL SHEET SCALE 100 FT. TO AN INCH
FEB. 1933 89 - ENTIRE SHEET -

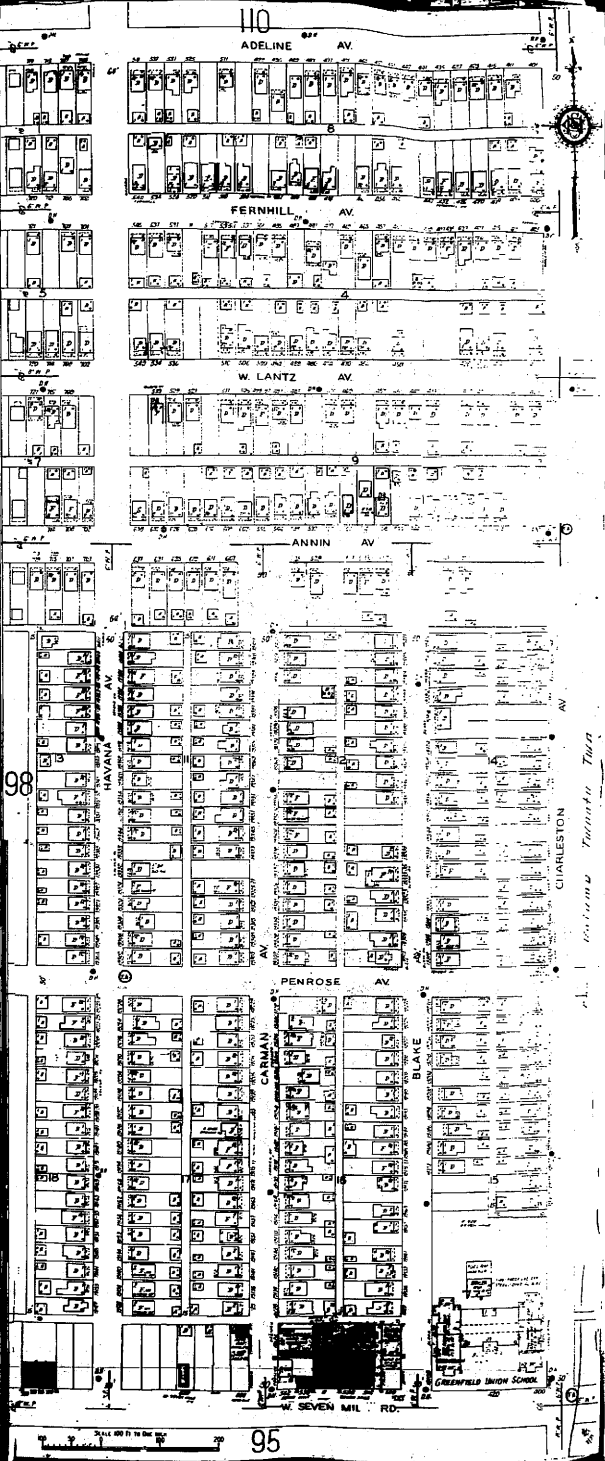


TERRITORY FORMERLY COVERED BY
THIS DETACHMENT NOW SHOWN ON
SHEETS 89# & 89# NO LONGER
CORRECTED ON THIS SHEET

PULASKI PUBLIC SCHOOL



W. STATE FAIR AV



110

ADELINE AV

FERNHILL AV

W. LANTZ AV

ANNIN AV

PENROSE AV

95

CLARLESTON
COLUMBIA TOWER TOWER



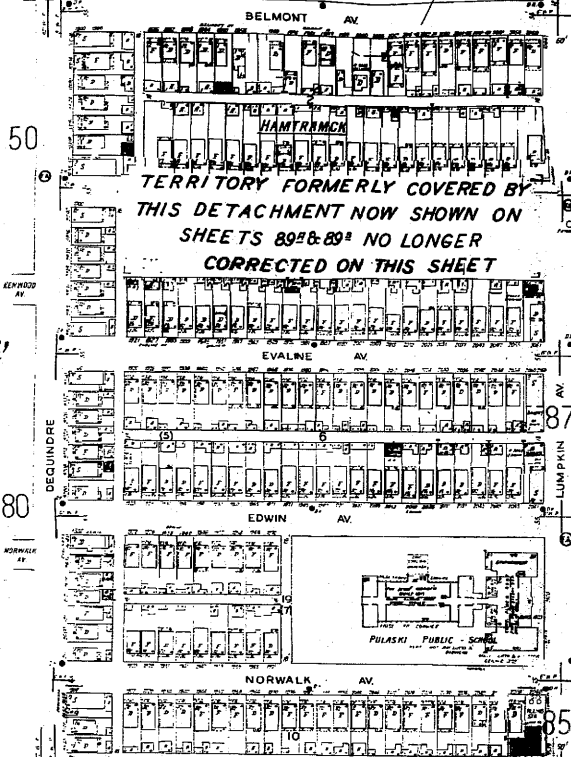
The Sanborn Library, LLC

Copyright © 1957 The Sanborn Library, LLC LHE
Year EDR Research Associate

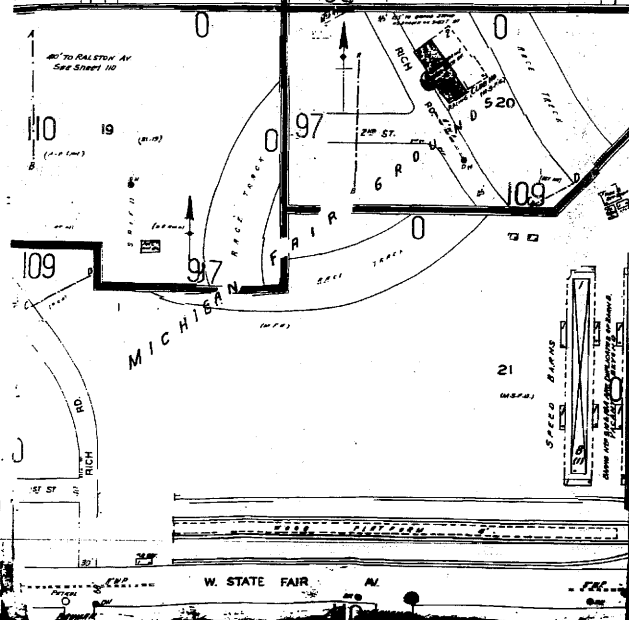
Reproduction in whole or in part of any map of The Sanborn Library, LLC may be prohibited without prior written permission from The Sanborn Library, LLC.

109

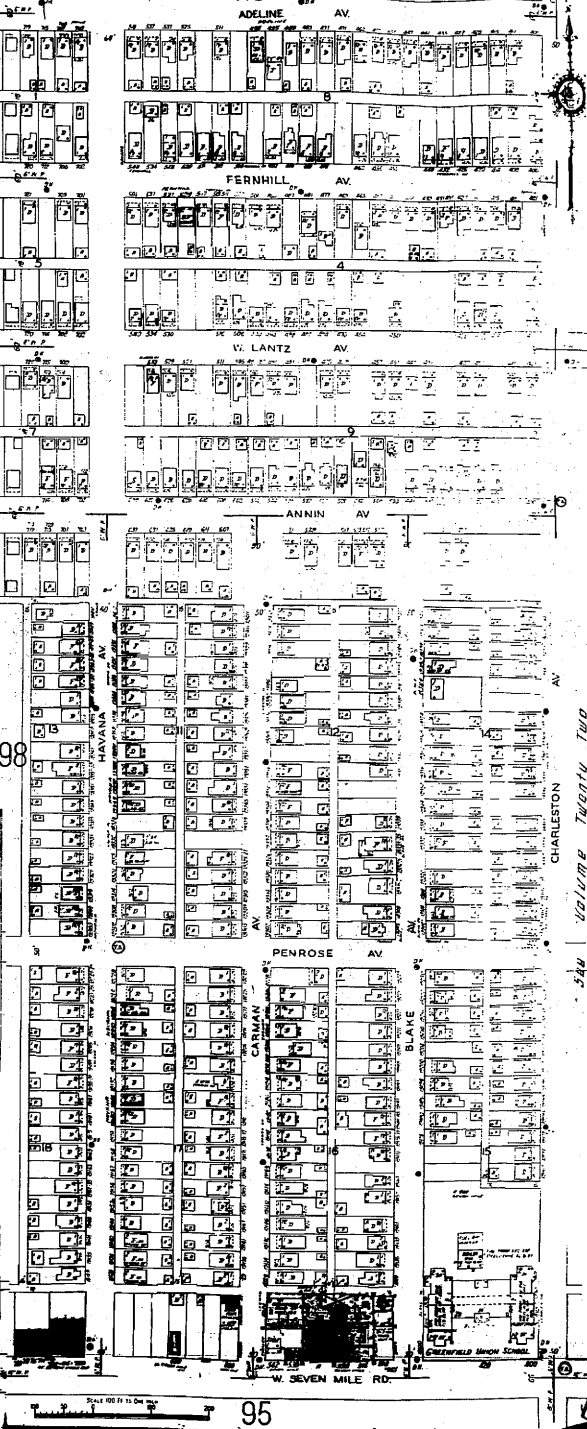
ADDL. SHEET SCALE 100 FT. TO AN INCH
FEB. 1933 89 - ENTIRE SHEET -



TERRITORY FORMERLY COVERED BY
THIS DETACHMENT NOW SHOWN ON
SHEETS 89⁸ & 89⁹ NO LONGER
CORRECTED ON THIS SHEET



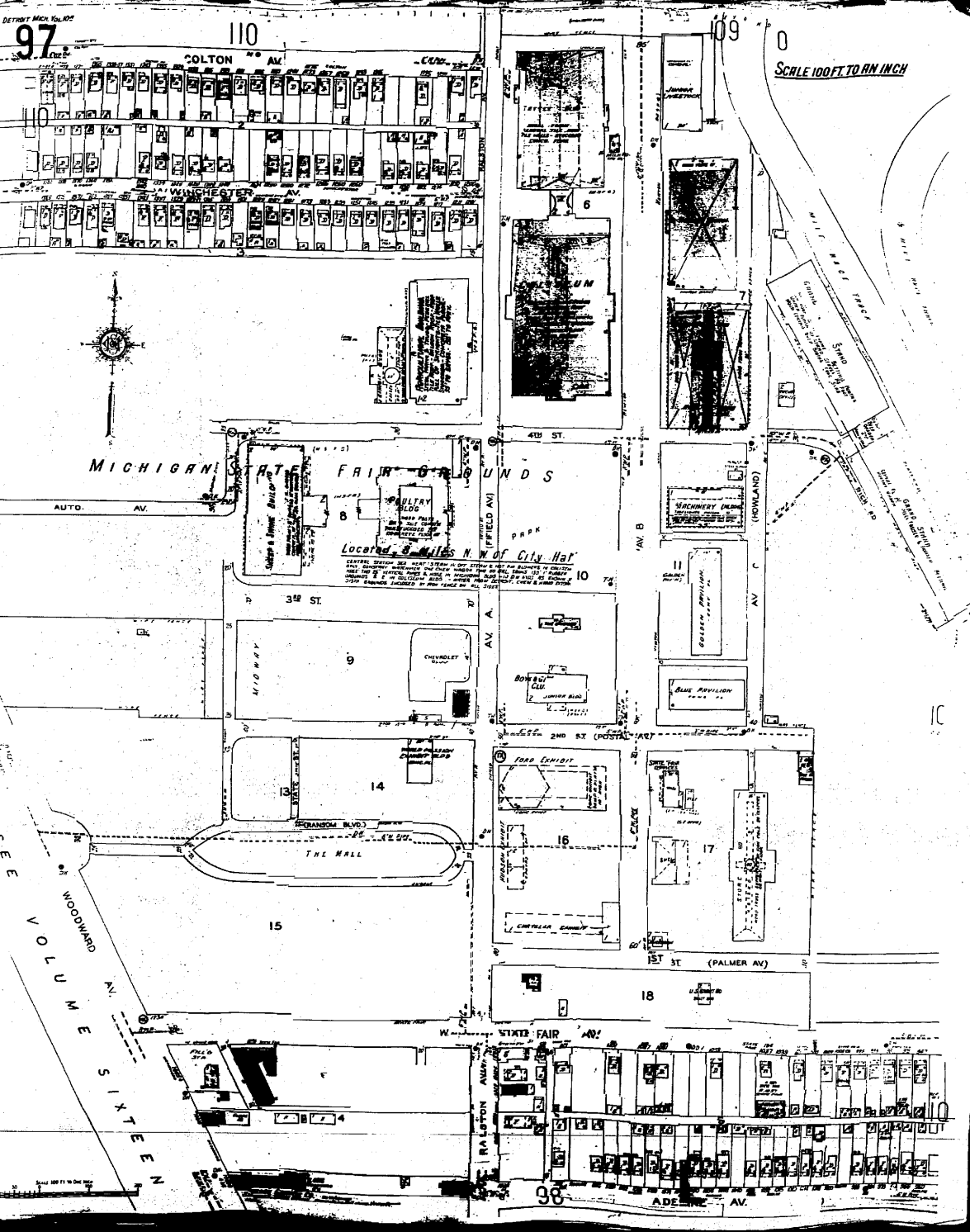
110



95

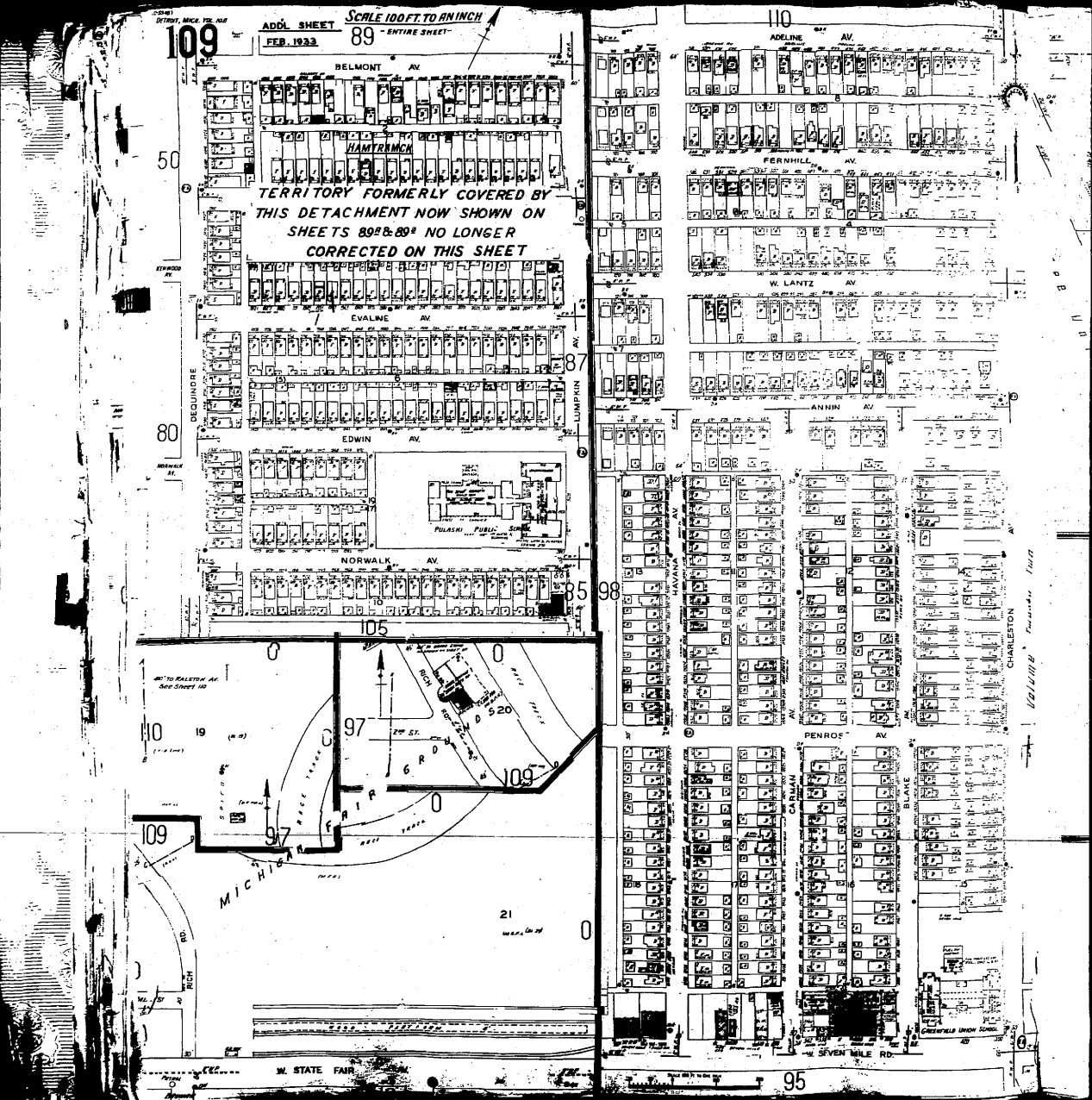
- 63
- 64
- 65
- 66
- 67
- 68
- 69
- 70
- 71
- 72
- 73
- 74
- 75
- 76
- 77
- 78
- 79
- 80
- 81
- 82
- 83
- 84
- 85
- 86
- 87
- 88
- 89
- 90
- 91
- 92
- 93
- 94
- 95
- 96
- 97
- 98
- 99
- 100
- 101
- 102
- 103
- 104
- 105
- 106
- 107
- 108
- 109
- 110
- 111
- 112
- 113
- 114
- 115
- 116
- 117
- 118
- 119
- 120

Volume Twenty Two

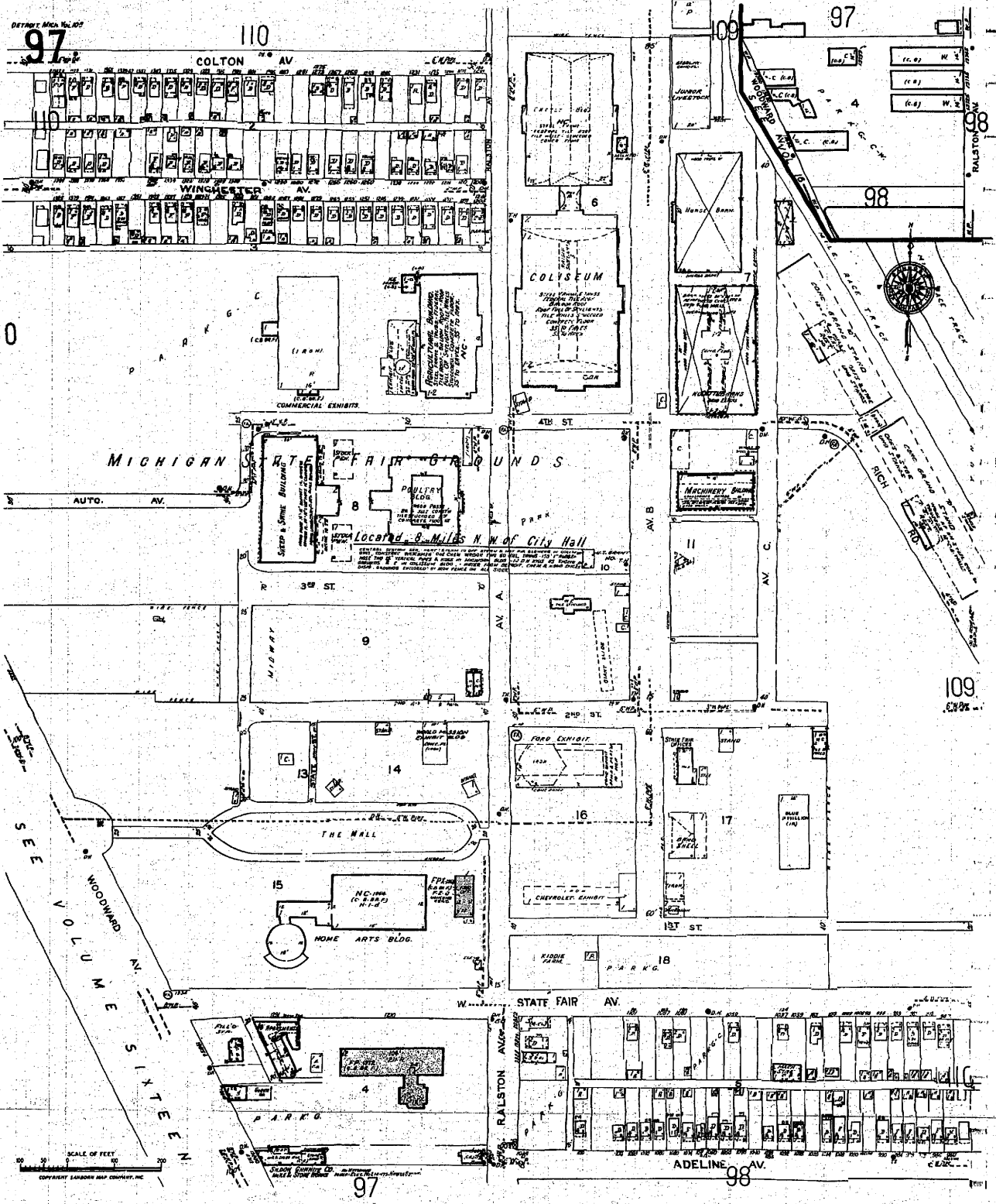


63
64
65
66
67
68
69
70
71
72
73
74
75
76
77
78
79

65



DETROIT, MICH. 48205



© Sanborn Co., EDR Sanborn, Inc. 1978



The Sanborn Library, LLC

Copyright © 1978 The Sanborn Library, LLC LHE
Year EDR Research Associate

Reproduction in whole or in part of any map of The Sanborn Library, LLC may be prohibited without prior written permission from The Sanborn Library, LLC.

DETROIT, MICH. Plat. 109



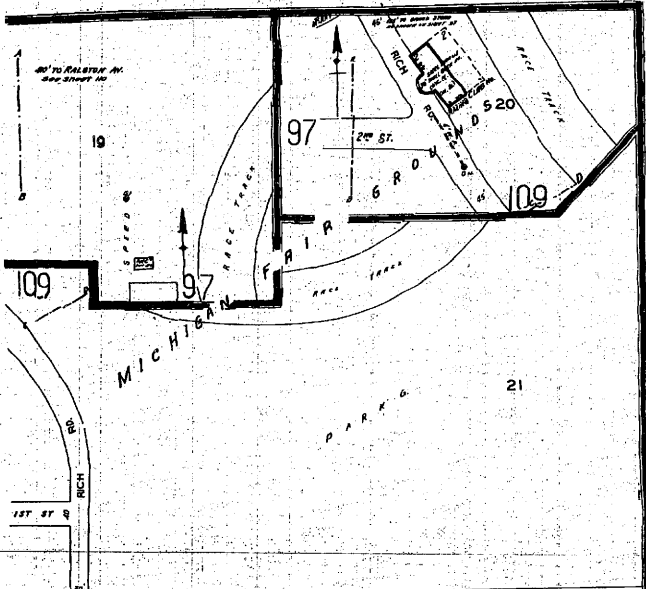
The Sanborn Library, LLC

Copyright © 1978 The Sanborn Library, LLC LHE
Year EDR Research Associates

Reproduction in whole or in part of any map of The Sanborn Library, LLC may be prohibited without prior written permission from The Sanborn Library, LLC.



Volume Twenty Two



SCALE OF FEET
0 50 100 200
COPYRIGHT SANBORN MAP COMPANY, INC. 95

© Sanborn Co., EDR Sanborn, Inc. 1978

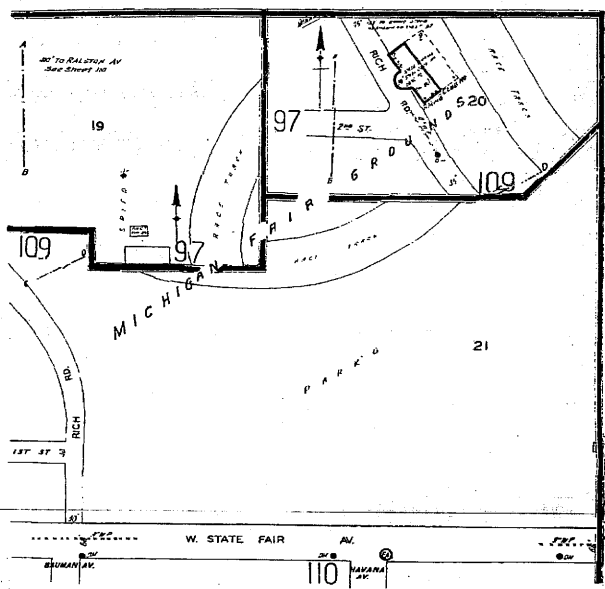


The Sanborn Library, LLC

Copyright © 1984 The Sanborn Library, LLC LHE
Year EDR Research Associate

Reproduction in whole or in part of any map of The Sanborn Library, LLC may be prohibited without prior written permission from The Sanborn Library, LLC.

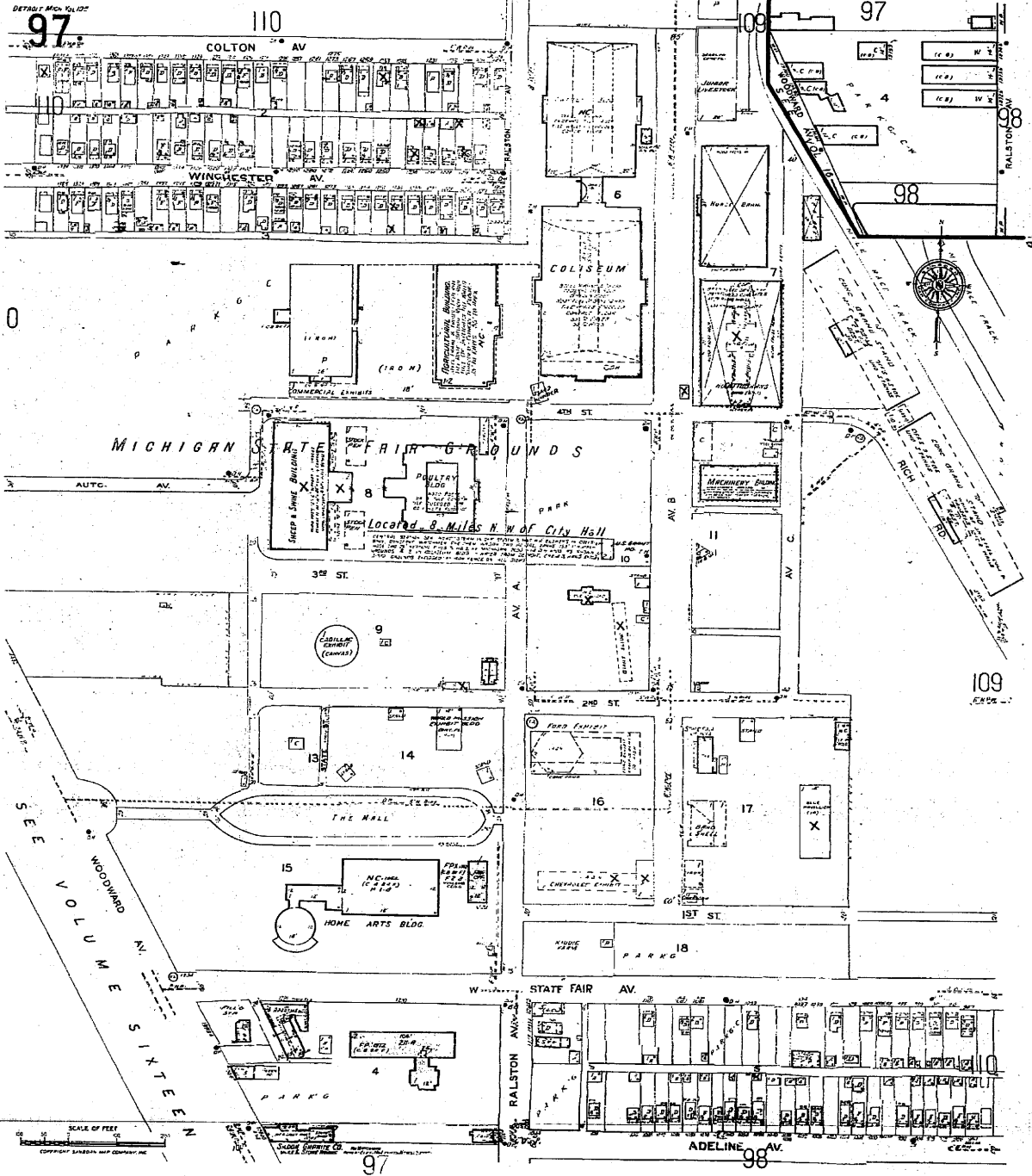
DIVISION, MICH. No. 1027
109



Volume Twenty Two

348

DETROIT MICH 1912

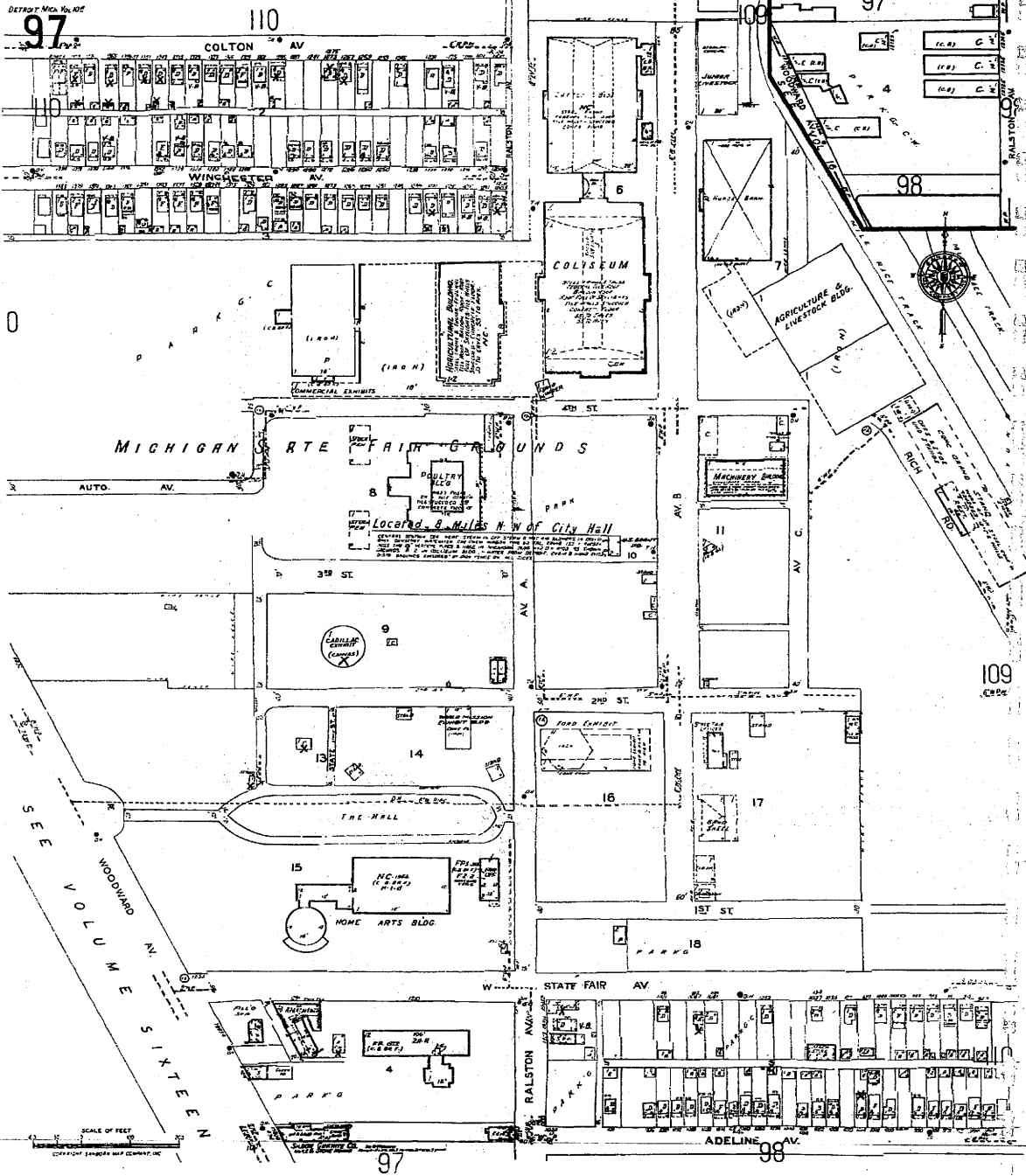


The Sanborn Library, LLC

Copyright © 1984 The Sanborn Library, LLC LHE
 Year EDI Research Associate

Reproduction in whole or in part of any map of The Sanborn Library, LLC may be prohibited without prior written permission from The Sanborn Library, LLC.

DETROIT MIC. 1902

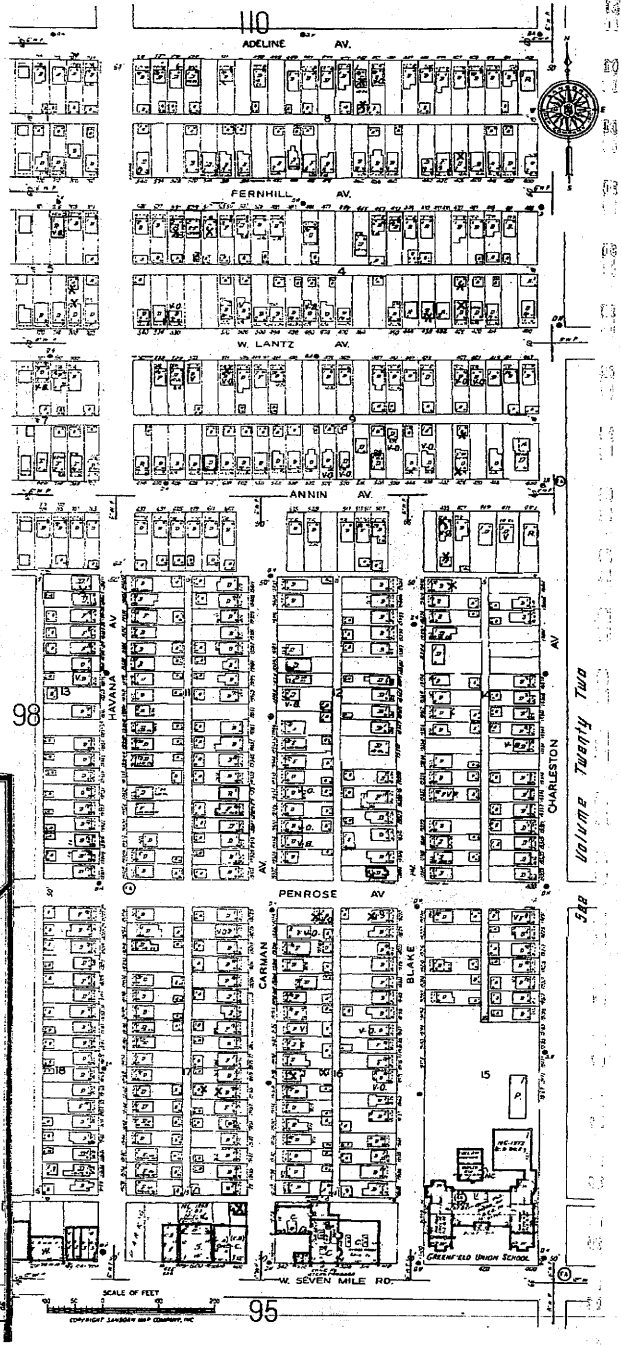


The Sanborn Library, LLC

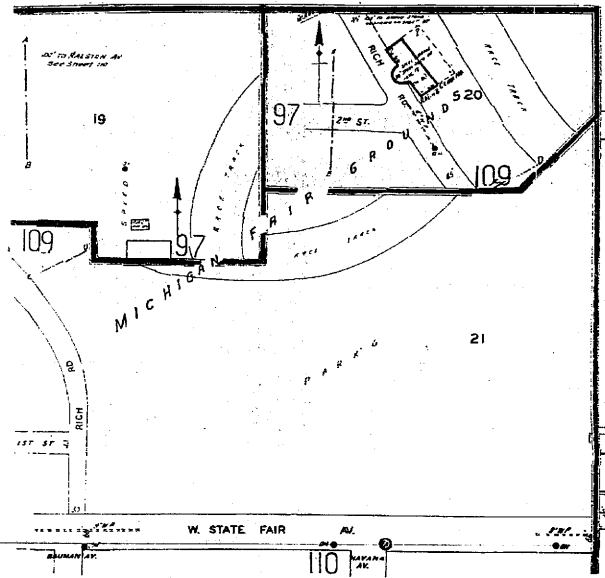
Copyright © 1987 The Sanborn Library, LLC LHE
Year EDR Research Associate

Reproduction in whole or in part of any map of The Sanborn Library, LLC may be prohibited without prior written permission from The Sanborn Library, LLC.

DETROIT, MICH., Vol. 108
109

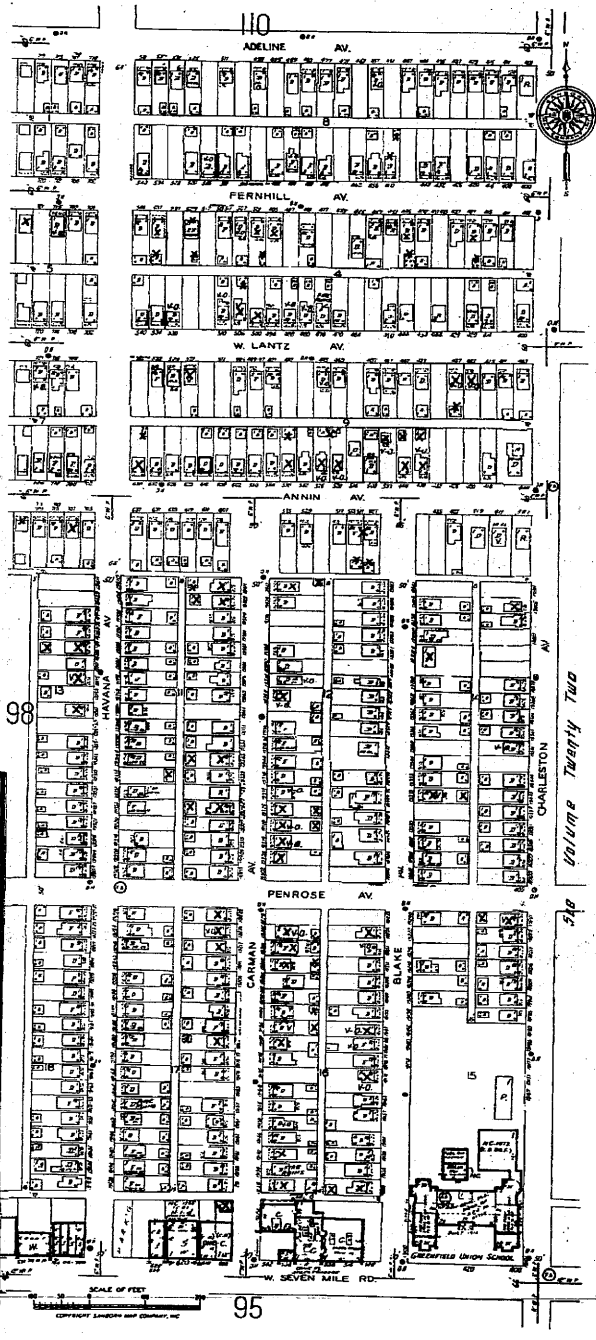
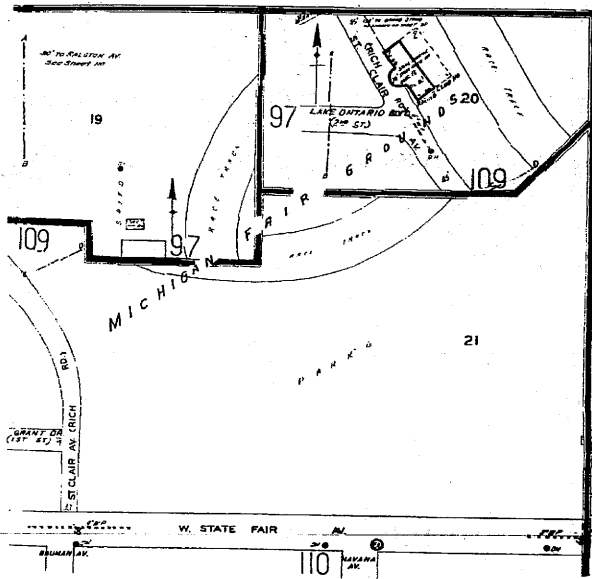


Volume Twenty Two
 588



SCALE OF FEET
 0 10 20 30 40 50 60 70 80 90 100
 COPYRIGHT SANBORN MAP COMPANY, INC.

DETROIT, MICH. Vol. 109
109

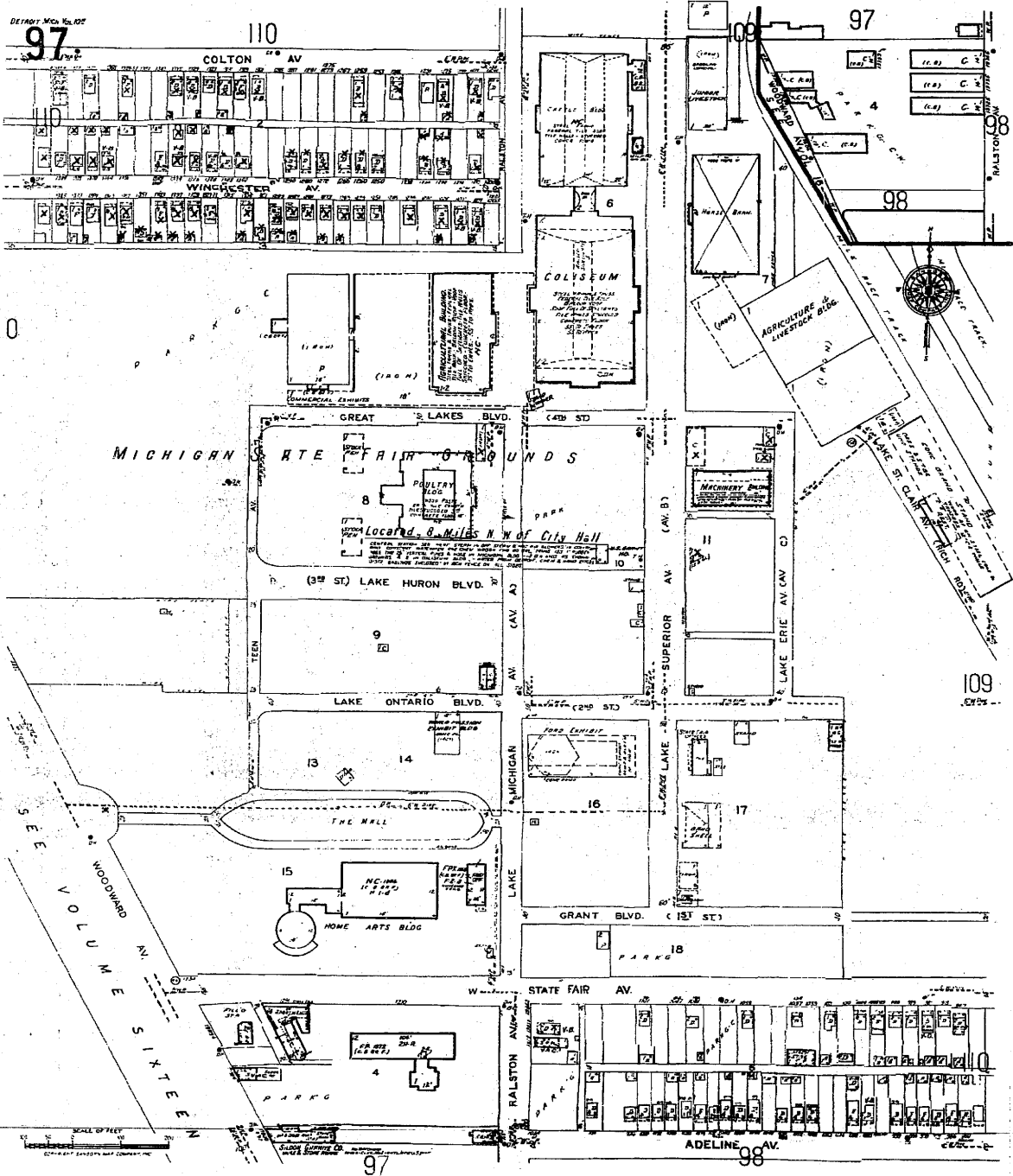


Volume Twenty Two

510

95

DETROIT MAP NO. 107



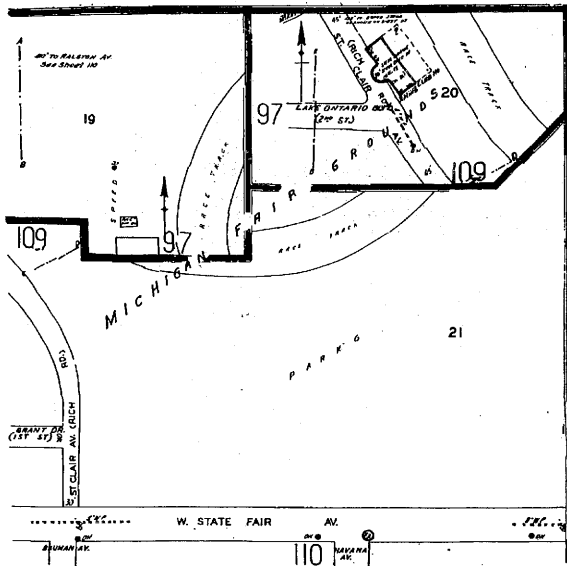


The Sanborn Library, LLC

Copyright © 1993 The Sanborn Library, LLC LHE
Year EDR Research Associate

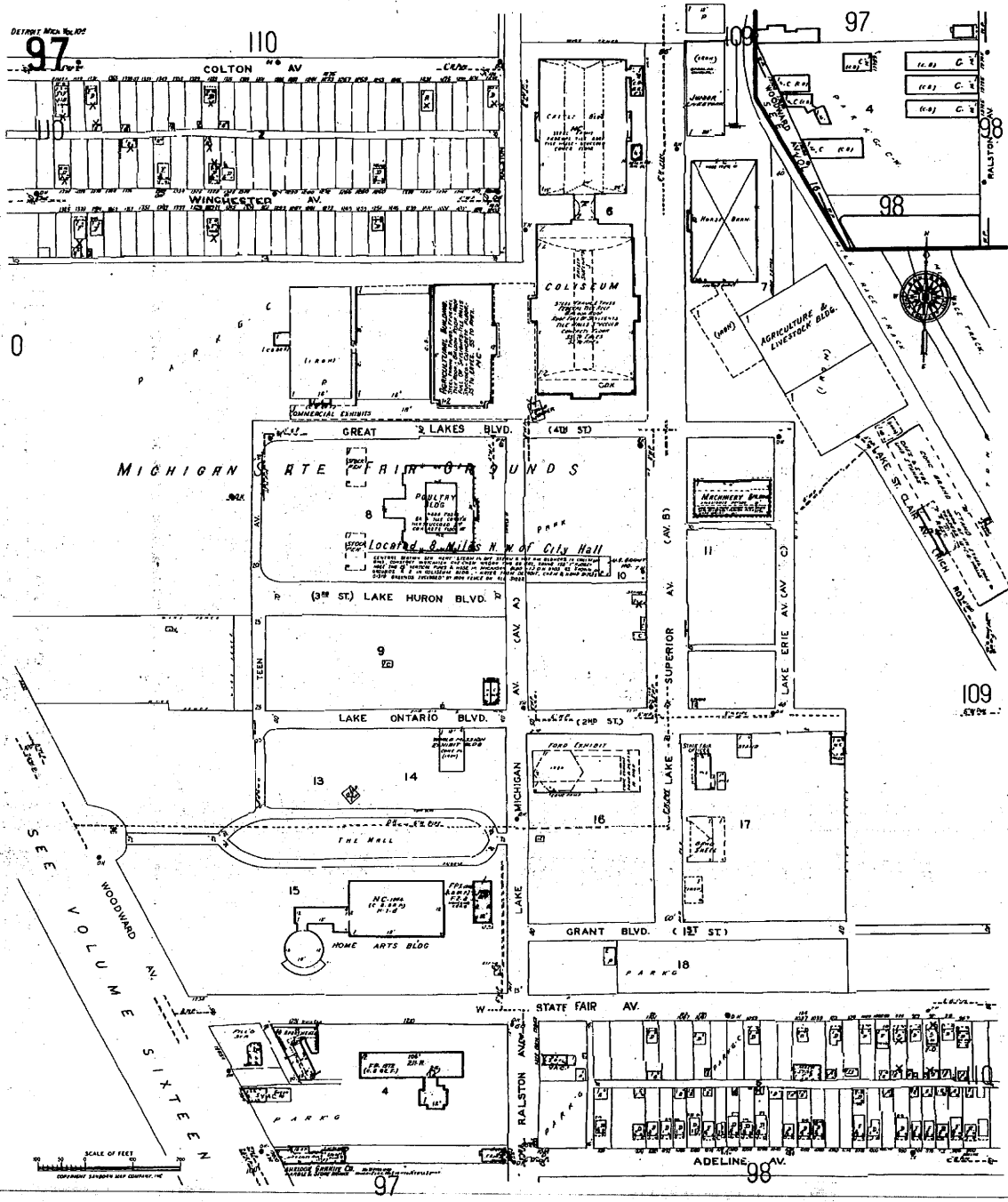
Reproduction in whole or in part of any map of The Sanborn Library, LLC may be prohibited without prior written permission from The Sanborn Library, LLC.

DETROIT, MICH. 1887, 1903
109




Volume Twenty Two

540



©1993 Sanborn Co., EDR Sanborn, Inc.


The Sanborn Library, LLC
 Copyright © 1993 The Sanborn Library, LLC LHE
 Year EDR Research Associate
 Reproduction in whole or in part of any map of The Sanborn Library, LLC may be prohibited without prior written permission from The Sanborn Library, LLC.