

Natural Resources Commission Meeting



NRC Policy Committee on Wildlife and Fisheries
November 10, 2011

NRC Policy Committee on Wildlife and Fisheries

November 10, 2011

- Updates
 - Wildlife Division Chief Updates
 - Deer Baiting in Northeast Michigan
 - Fisheries Division Chief Updates
- NRC Action
 - Amendment to Deer Baiting Ban Area in the Lower Peninsula



NRC Policy Committee on Wildlife and Fisheries

November 10, 2011

- Director – For Information (Action in December)
 - 6 Fisheries Orders
- Director's Action
 - 3 Fisheries Orders



Wildlife Division Update



Russ Mason, Chief
Wildlife Division
November 10, 2011



Updates

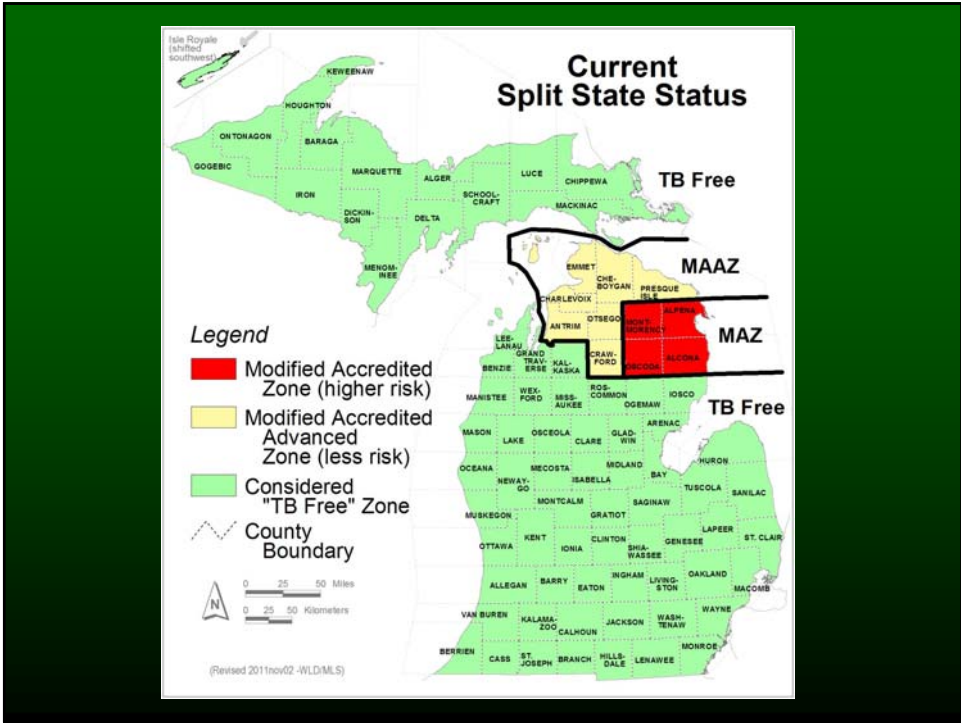
- Stephen Beyer
 - New Research & Management Section Supervisor
- Status of federal funding for wolf depredation through USDA Wildlife Services



Thank You



www.michigan.gov/dnr



Thank You



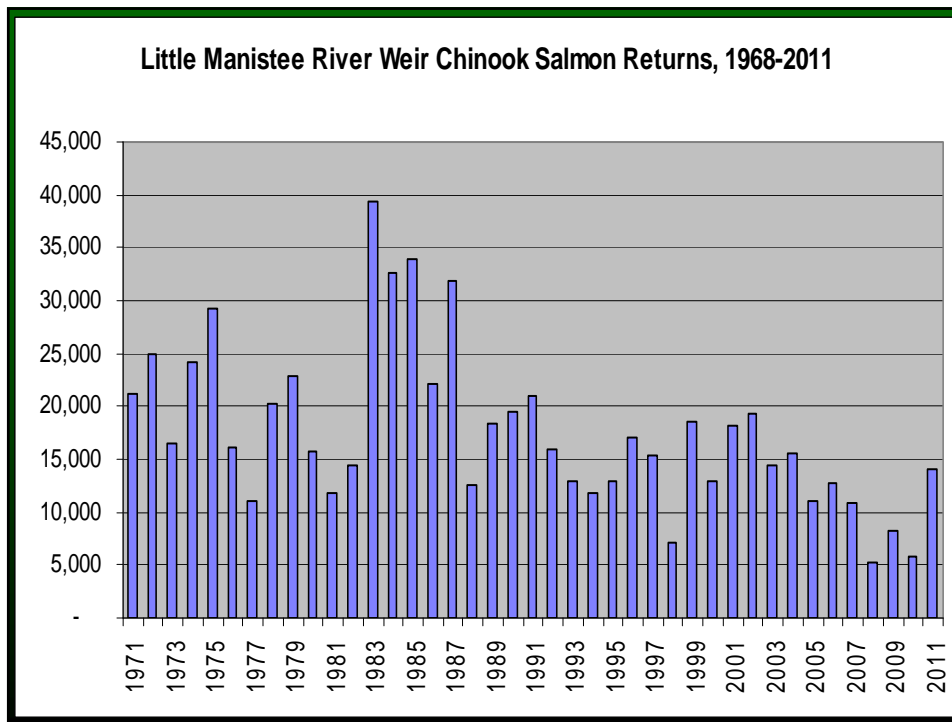
www.michigan.gov/deer

Fisheries Division Update



Jim Dexter, Acting Chief
Fisheries Division
November 10, 2011





Weir updates

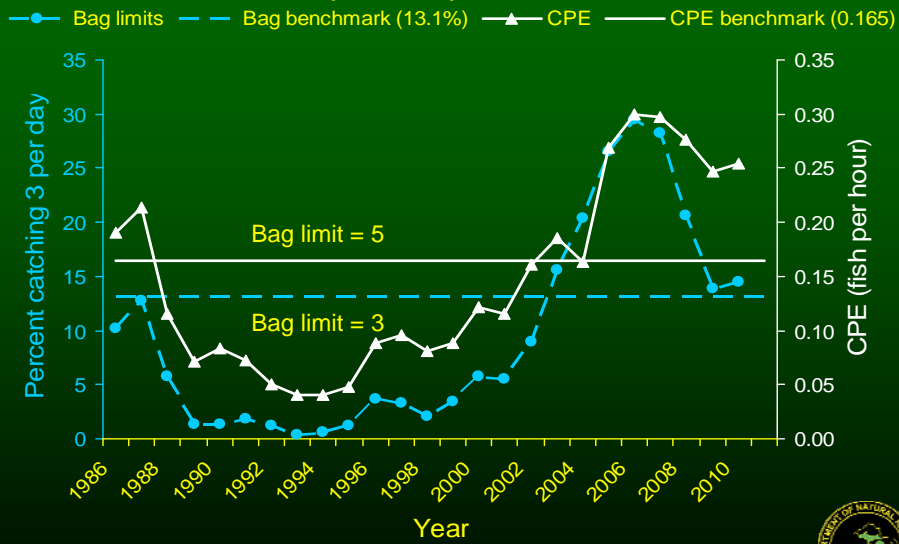
- All weir returns up 140 to 900%
- LMRW: 6.5 million Chinook eggs
- Platte: 5.0 million Coho eggs
- All weirs above average except Swan
- Boardman River Coho run twice historical high

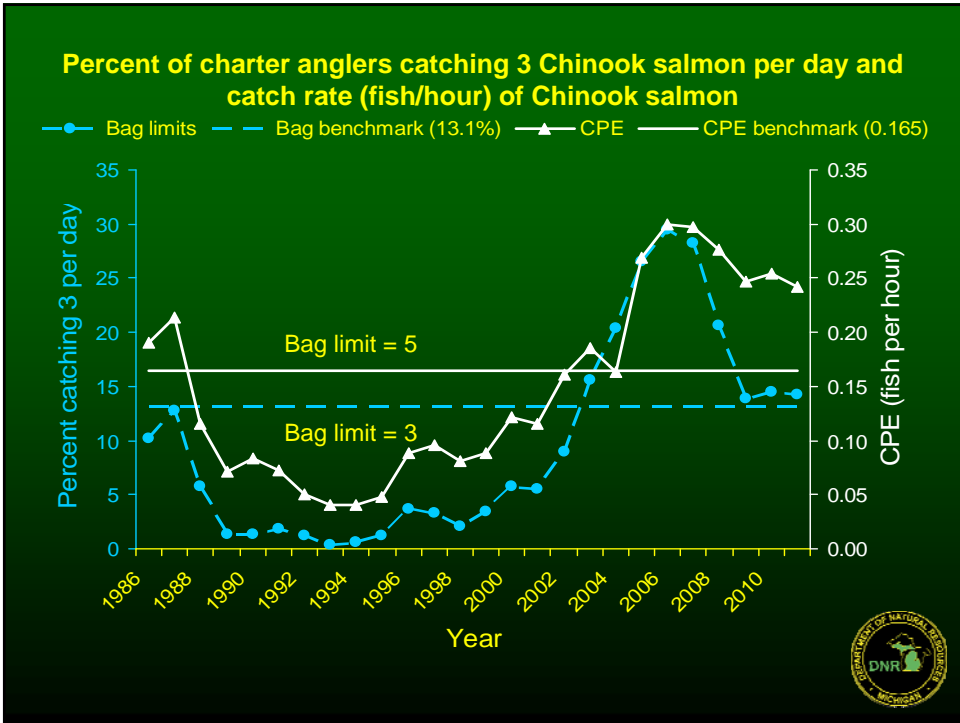
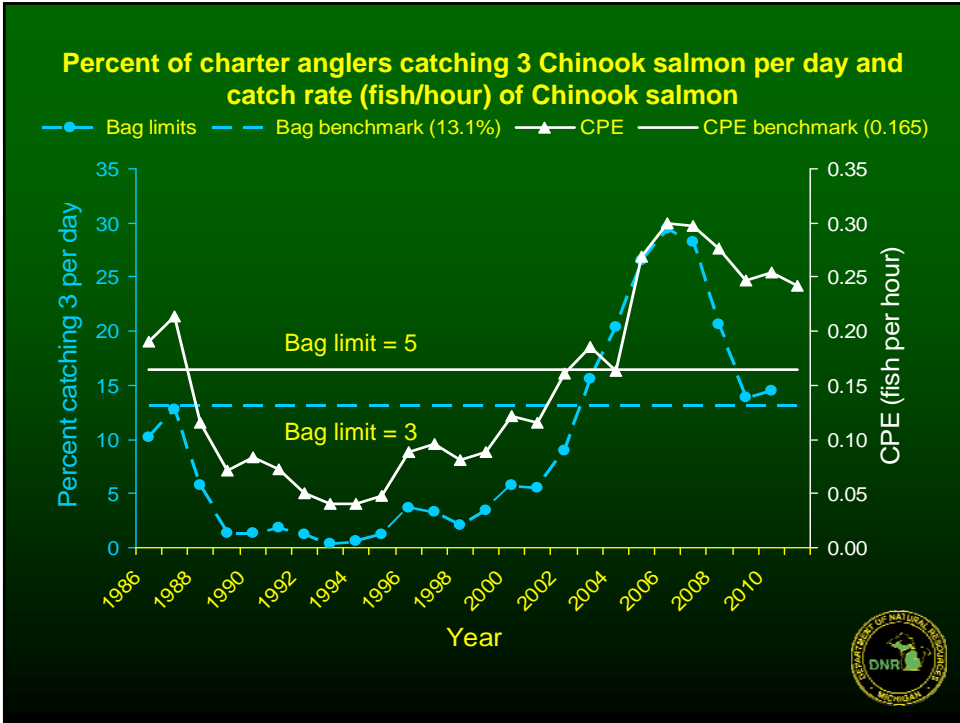


Salmon Bag Limit



Percent of charter anglers catching 3 Chinook salmon per day and catch rate (fish/hour) of Chinook salmon





Thank You



www.michigan.gov/dnr

Fisheries Orders for Information



FO- 200: Statewide Trout, Salmon, Whitefish and Lake Herring Regulations

- Removal of Johnson Cr. (Wayne Co.) from GRS to Type 1
- Two stream Type class changes
- One stream boundary modification
- Two stream removals
- Seven lake removals
- MH-1 Lake trout



FO- 203: Waters Closed to the Take of Minnows for Personal Use

- Addition of Kent Lake (Livingston/Oakland) and Silver Lake (Oceana County) due to recent findings of Koi herpes virus
- Includes tributaries to both lakes



FO-204: Spawning Closures

- Clinton Creek, Presque Isle County
- Platte River Benzie County
- Pere Marquette River, Mason County



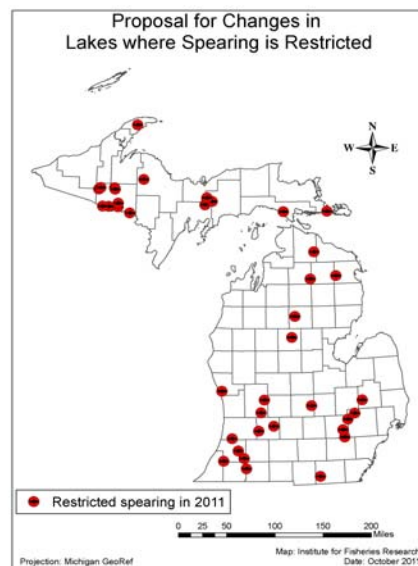
FO- 216: Regulations for the taking of Minnows for Commercial Use

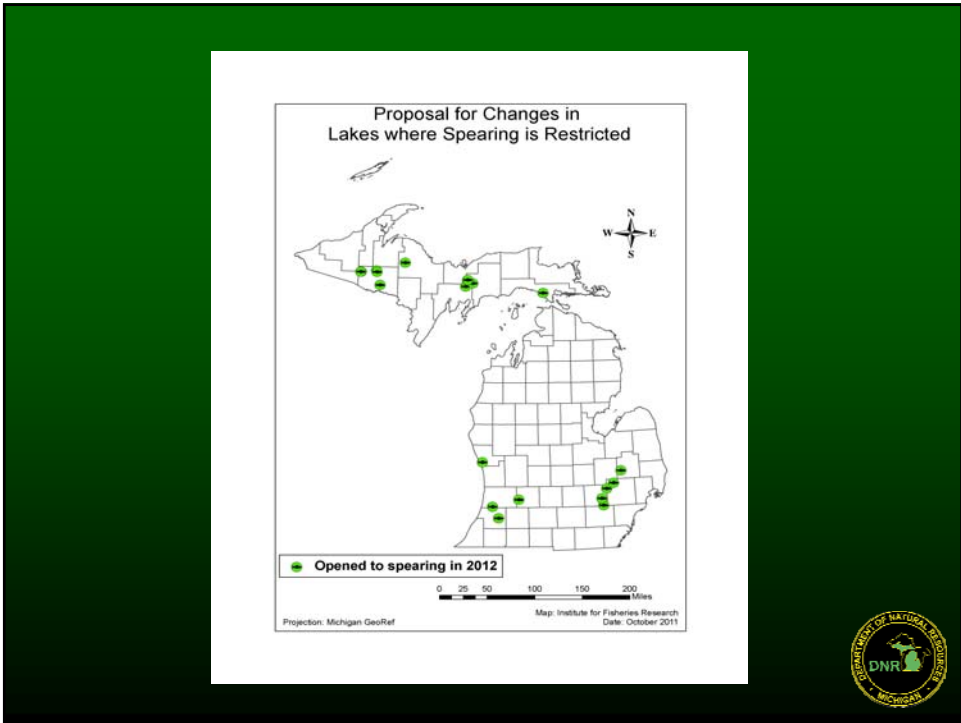
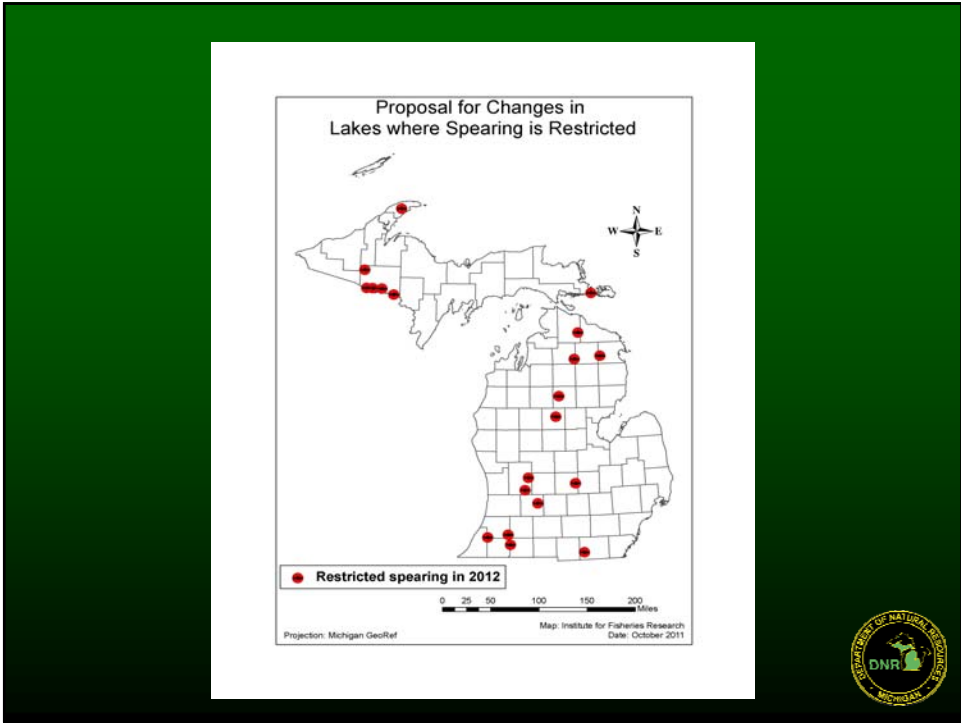
- Prohibiting take from Kent Lake (Livingston/Oakland) and Silver Lake (Oceana County) due to recent finding of Koi herpes virus
- Includes tributaries to waters
- Opens Lake Superior waters



FO- 219: Spearing Regulations - Statewide

- Expanding the season on many waters
- Expanding the waters bodies open
- Expanding the type of gear that can be used
- Expanding the list of species
- Elimination of many restrictions and exceptions = **simplification**





Justifications for Closures

- Musky broodstock (3)
- Backup musky broodstock (3)
- Protect stocked musky (2)
- Protect stocked musky and low pike populations (3)
- Low level natural populations of musky (5)
- Reduce harvest on pike (2)
- Closed by statute (1)



FO- 245: Fish Disease Control

- Addition of a Koi herpes virus section
- Added Cisco to list of VHS susceptible species
- Noticing fish health certification requirements for private fish stocking
- Removing restriction that requires roe to be on a hook



Thank You!



www.michigan.gov/dnr

Fisheries Education & Salmon in the Classroom Update

Shana Ramsey

Hatchery Interpreter

Salmon in the Classroom Co-Coordinator

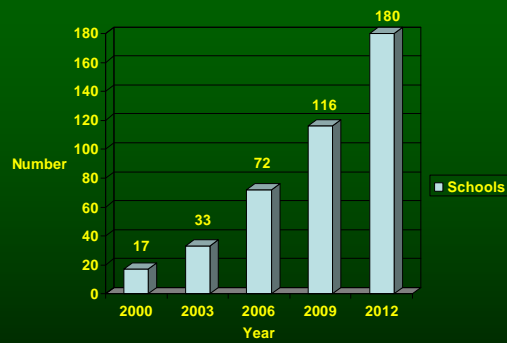




Salmon in the Classroom



Salmon in the Classroom









Little Manistee Weir

One week and 6.5 million Chinook salmon eggs later...





Start Video...



www.michigan.gov/sic