



**STATE OF MICHIGAN  
DEPARTMENT OF NATURAL RESOURCES  
LAW ENFORCEMENT DIVISION**

**2007-2008  
SNOWMOBILE FATALITY REPORT**

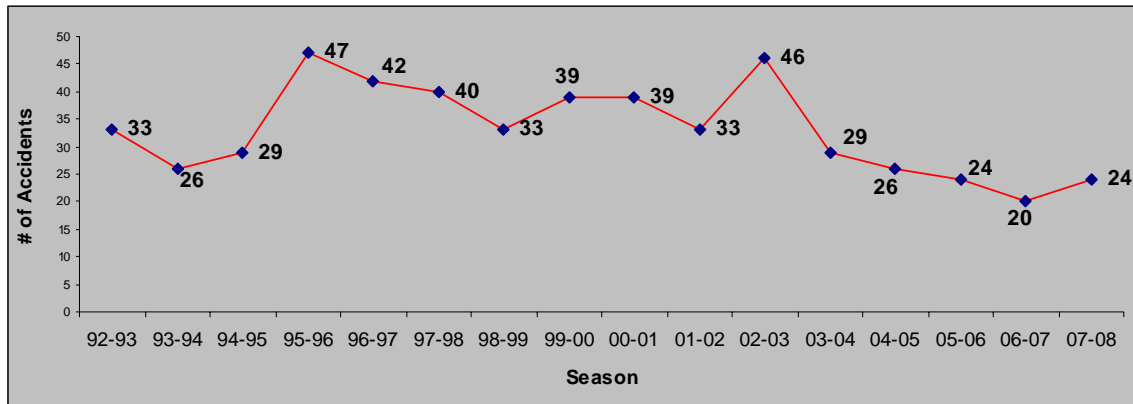
## Snowmobile Fatality Report for 2007-2008

The following summary examines fatal crashes for the 2007-2008 snowmobile season.

Statistics are derived from State of MI Traffic Crash Reports and MI DNR LE Snowmobile Accident Reports. The data has been updated through 5/13/2008.

There were twenty-four (24) fatal snowmobile crashes during the 2007-2008 season resulting in twenty-five (25) fatalities. That is an increase in both areas from 2006-2007 season's twenty (20) fatal snowmobile crashes and twenty-one (21) fatalities. However, the average number of accidents over the past 5 seasons, 24.6, is a 26% decrease from the average of the previous 16 seasons, 33.1.

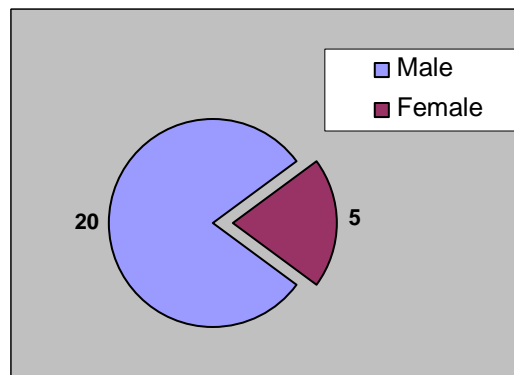
**Accidents by Season**



### WHO WERE THE VICTIMS?

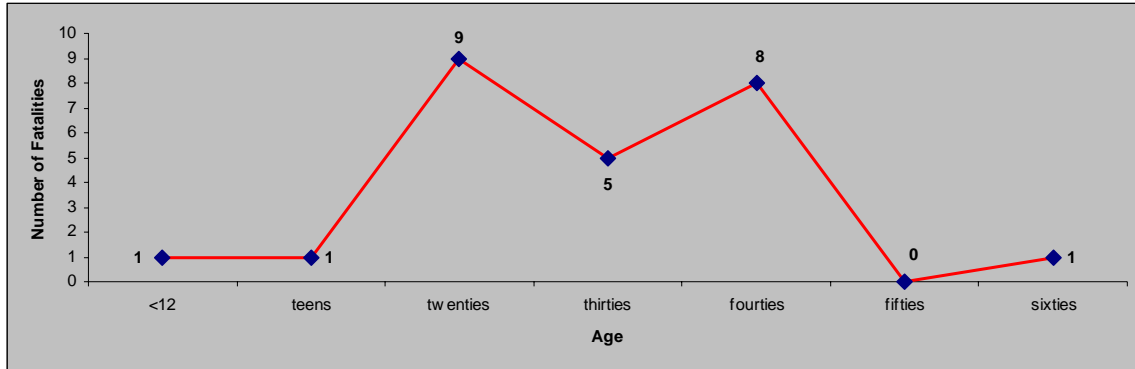
Twenty (20) of the fatalities, 80%, were male. Five (5) of the fatalities, 20%, were female.

**Fatalities by Gender**



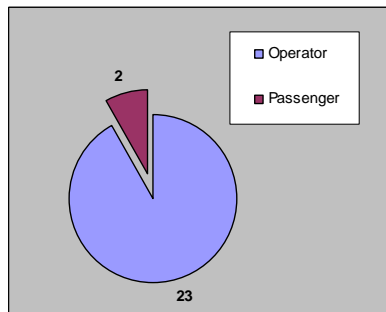
One (1) of the fatalities, 4%, was 12 years or younger. One (1) of the fatalities, 4%, was a teenager. Nine (9) of the fatalities, 36%, were in their twenties. Five (5) of the fatalities, 20%, were in their thirties. Eight (8) of the fatalities, 32%, were in their forties. One (1) of the fatalities, 4%, was in his/her sixties.

**Fatalities by Age**



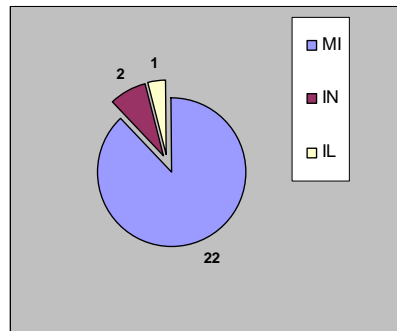
Twenty-three (23) of the fatalities, 92%, were the Operator of a snowmobile at the time of the crash. Two (2) of the fatalities, 8%, were the Passenger at the time of the crash.

**Fatalities by Role**



Twenty-two (22) of the fatalities, 88%, were Michigan residents. Two (2) of the fatalities, 8%, were Indiana residents. One (1) was an Illinois resident.

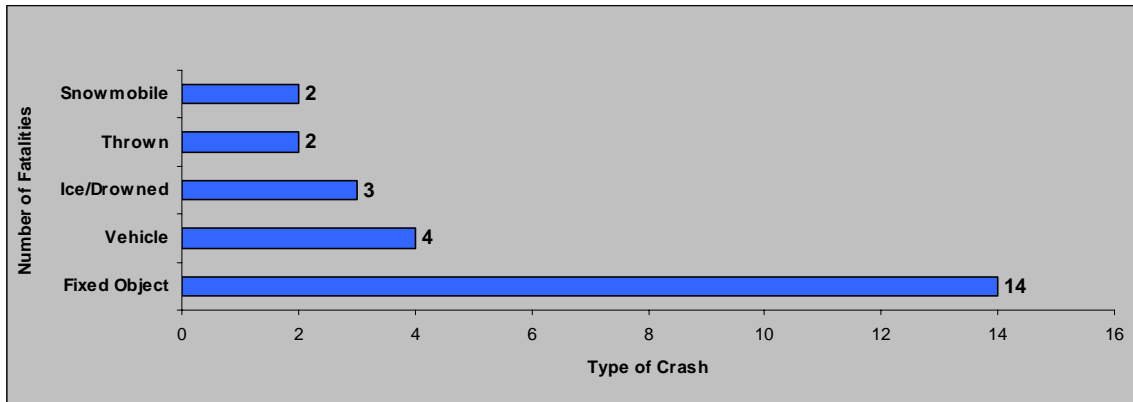
**Fatalities by Residency**



## WHAT HAPPENED?

Fourteen (14) of the crashes, 56%, were collisions with fixed objects. Four (4) of the crashes were collisions with motor vehicles. Three (3) of the crashes, 12%, involved the victims veering off the frozen surface of a lake and into open water and drowning. Two (2) of the crashes, 8%, involved the victims being thrown from their snowmobile and colliding with the ground. Two (2) of the crashes, 8%, were collisions with other snowmobiles.

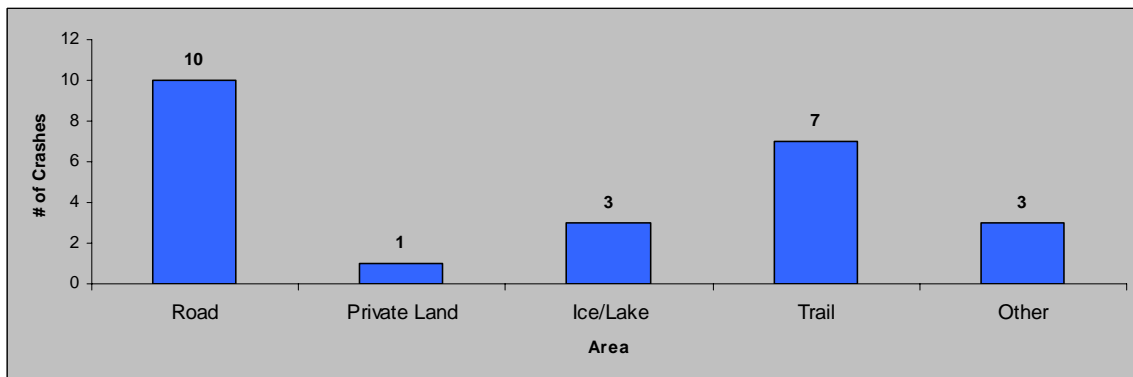
**Crash Type**



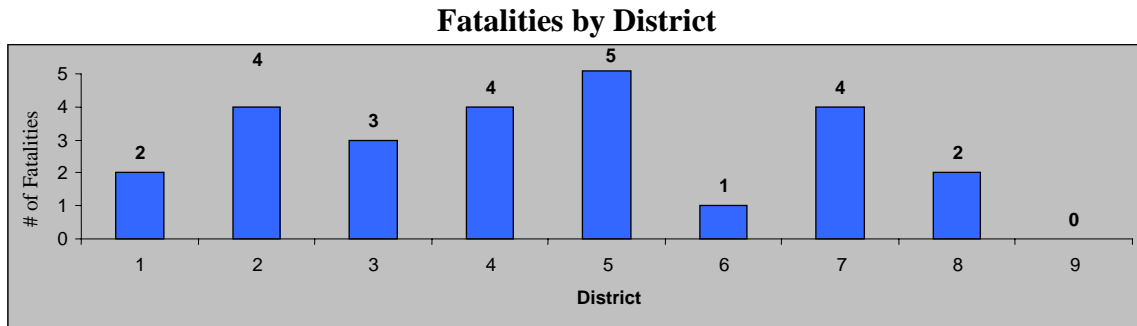
## WHERE DID THE FATAL CRASHES OCCUR?

Ten (10) of the crashes, 40%, occurred on or near a road. Seven (7) of the crashes, 28%, occurred on snowmobile trails. Three (3) of the crashes, 12%, occurred within the boundaries of a lake, including frozen surfaces and open water. One (1), or 4% of the crashes, occurred on private property. Three (3) of the crashes, 12%, occurred in other areas.

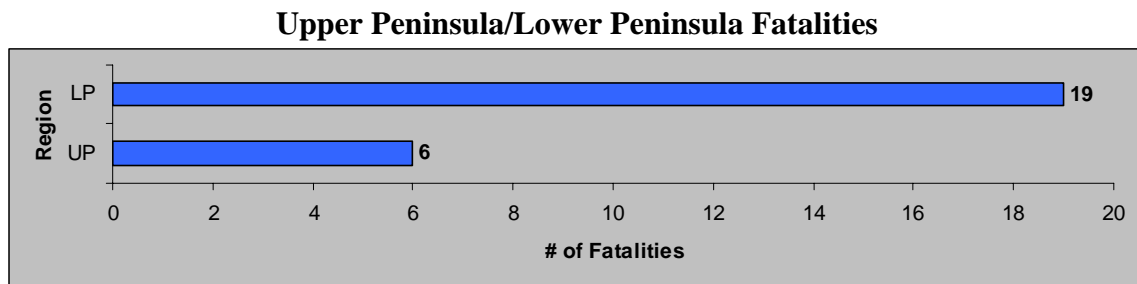
**Area of Crash**



Two (2) of the fatalities, 8%, occurred in District 1. Four (4) of the fatalities, 16%, occurred in District 2. Three (3) of the fatalities, 12%, occurred in District 3. Four (4) of the fatalities, 16%, occurred in District 4. Five (5) of the fatalities, 20%, occurred in District 5. One (1) fatality, 4%, occurred in District 6. Four (4) of the fatalities, 16%, occurred in District 7. Two (2) of the fatalities, 8%, occurred in District 8. No fatalities occurred in District 9.



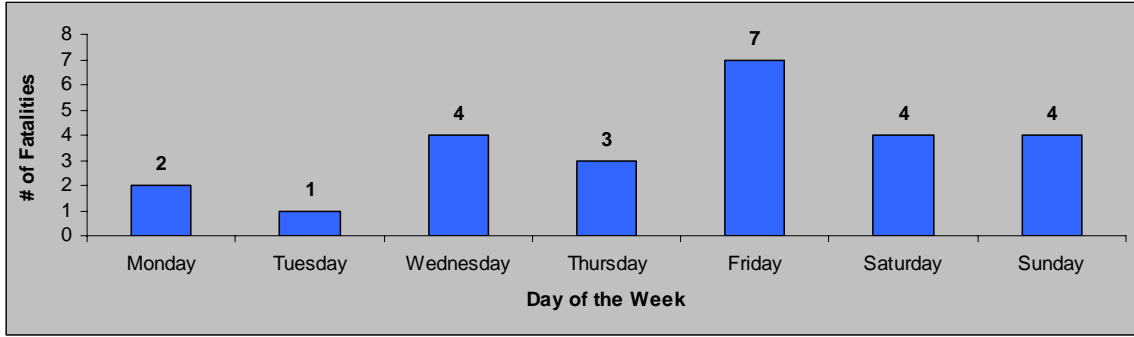
Nineteen (19) of the fatalities, 76%, occurred in the Lower Peninsula. Six (6) of the fatalities, 24%, occurred in the Upper Peninsula.



**WHEN DID THE FATALITIES OCCUR?**

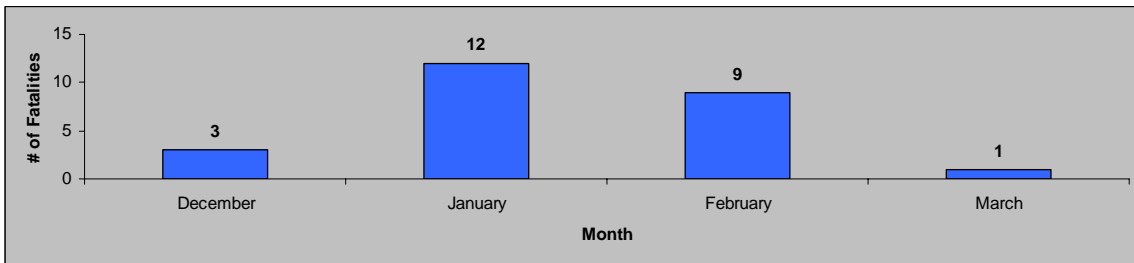
Ten (10) of the fatalities, 40%, occurred between Monday and Thursday. Fifteen of the fatalities, 60%, occurred between Friday and Sunday.

### Fatalities by Day of the Week



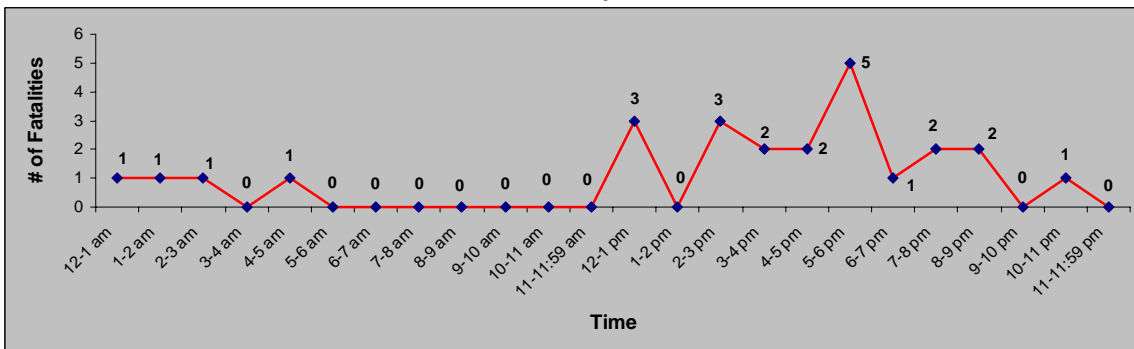
Three (3) of the fatalities, 12%, occurred during the month of December. Twelve (12) of the fatalities, 48%, occurred during the month of January. Nine (9) of the fatalities, 36%, occurred during the month of February. One (1) fatality, 4%, occurred during the month of March. No fatalities occurred between the months of April and November.

### Fatalities by Month



Four (4) of the fatalities, 16%, occurred between 12-6 AM. No fatalities occurred between 6-11:59 AM. Fifteen (15) of the fatalities, 60%, occurred between 12-6 PM. Six (6) of the fatalities, 24%, occurred between 6-11:59 PM. The highest hour of the day was 5-6 PM, with 5 fatalities. The next highest hours were 12-1 PM and 2-3 PM with 3 fatalities each.

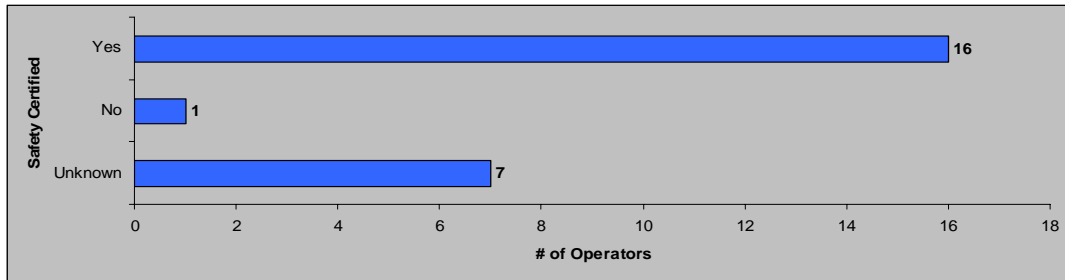
### Fatalities by Time



## **WHY DID THE FATAL CRASHES OCCUR?**

Sixteen (16) of the snowmobile operators, 67%, were safety certified at the time of the fatal crash. One (1) of the snowmobile operators, 4%, was not safety certified. The safety certification of seven (7) snowmobile operators, 29%, is unknown.

**Safety Certification**



Alcohol consumption was confirmed in nine (9), 36%, of the fatal crashes. Sixteen (16) of the fatal crashes, 64%, did not involve alcohol consumption. The number of fatalities involving alcohol was down to 36% from 60% the 2006-2007 season. All nine fatalities involving alcohol were males. Their ages ranged from 27 to 46, with an average age of 37 years old.

**Alcohol Involvement**

