

FISHERIES DIVISION  
MICHIGAN  
DEPARTMENT OF  
NATURAL  
RESOURCES

# West Lake Superior Management Unit



ISSUE 5

MARCH 2017

## Staff:

**George Madison**

Senior Fisheries Biologist

Baraga Customer Service  
Center

**Cory Kovacs**

Acting Lake Superior Unit  
Manager

Newberry Customer Service  
Center

The West Lake Superior Management Unit works as a combined staffing unit with the Northern Lake Michigan management unit with shared field technician staff who work out of the Crystal Falls DNR office.

## 2016-17 *Newsletter*

This newsletter for Michigan DNR Fisheries Division's West Lake Superior Management Unit is intended to provide you with a brief overview of the fisheries management activities that are occurring either Statewide or are occurring in the Western Upper Peninsula of Michigan. Information shared in this document will summarize lake and stream surveys, sportfishing regulation proposals, research activities, upcoming projects, and fish stocking summaries. Other similar newsletters are drafted by the other seven management units across the State and these newsletters can be accessed from the Michigan DNR website or can be mailed to you by calling any Michigan DNR office. From these newsletters, if you have questions or would like additional information, please contact your local DNR-Fisheries staff and we will make sure you get the information that you are looking for.

DNR / FISHING / MANAGING MICHIGAN'S FISHERIES / BASINS AND MANAGEMENT UNITS

- [Western Lake Superior →](#)
- [Eastern Lake Superior →](#)
- [Northern Lake Michigan →](#)
- [Northern Lake Huron →](#)
- [Central Lake Michigan →](#)
- [Southern Lake Huron →](#)
- [Southern Lake Michigan →](#)
- [Lake Erie →](#)



## Small Water Kayak Experience

The recent increase in kayak sport recreation has created a new demand for quiet water panfishing. Small inland puddle lakes that typically have not seen any angling activity are now being visited by outdoor enthusiasts who are looking for places to get away from the crowds. Past DNR-Fisheries newsletters have discussed bluegill rearing and panfish stocking, and these programs have been well received by anglers who enjoy fishing these waters with light-weight tackle. Panfish rearing and stocking will continue to be a part of the Western Upper Peninsula fisheries management programs. In 2016 bluegill stocking was implemented on the following waters; Rockland Pond (Ontonagon County), Manganese Lake (Keweenaw County), Silver Lake Basin (Marquette County), and Tourist Park Impoundment (Marquette County). Additional waters will be stocked in 2017.

### Fishing Gets Futuristic:

Nationwide, there has been rising interest in sport fishing using quadcopters.

- One company has developed a quadcopter that lets anglers fly out their bait and find plant-free spots with plenty of fish.
- This company's copter has a winch that lowers an underwater camera and the bait. The copter is flown out over the water before the bait is lowered. It lets fishermen avoid getting their line stuck in plants.
- A special waterproof camera beams back live footage so the angler can see if there are any fish at that location.

Kayak sales have soared in the past few years and it is not uncommon to see trucks on the road with two kayaks in the bed.



Duck Lake (Gogebic County): This 616 acre lake is noted for a sport fishery consisting of walleye, northern pike, large-mouth bass, bluegill, and black crappie. The US Forest Service Ottawa National Forest fisheries specialist, John Pagel, worked with assistance of three lake residents to conduct a week-long netting survey here. Fish collection results of this survey documented a reasonable population of all the fish species mentioned above. Biennial stocking of walleye helps maintain this sport fishery, therefore 15,389 walleye fingerlings were introduced to this lake during late June 2016, with another allocation scheduled for June 2018.

Little Duck Lake (Gogebic County): The success of annual stocking of yearling rainbow trout in this Gogebic County inland lake has been questionable since the 1990's. There are no reports of angling success and periodic netting surveys typically capture less than 10 rainbow trout. A two-night fall 2016 netting survey in this 42 acre lake, using four fyke nets (hoop style trap nets) and three experimental gill nets, captured only five rainbow trout. One angler was interviewed during this netting survey and he reported that he fishes the lake regularly and caught one rainbow trout in 2015 and no rainbow trout in 2016. The return to creel of the annual stocking cost is not an effective stocking program to develop a sport fishery. Rainbow stocking will be terminated in 2017 and a water column temperature profile review will be scheduled for documentation to the management file for this lake.



Fisheries survey using a Fyke Net

## 2016 Fisheries Surveys

**Emily Lake (Houghton County):** Emily Lake is a small 54 acre lake that has been stocked with trout since 1957. This is a deep lake, with two basins of 90 feet and 67 feet, accessed by a well developed concrete boat launch located on the western shore. A small State Forest campground is located on the southern shore, with picturesque campsites that look out over the lake. This lake receives 5,000 spring yearling rainbow trout annually every May. An October 31-November 1st netting survey using two gill nets and five fyke nets collected 34 largemouth bass, 81 bluegill, 8 yellow perch, and 6 rainbow trout. The rainbow trout caught in this survey ranged from 12-21 inches in size. Emily Lake is a Type-B sportfishing regulation classified trout water and will continue to be stocked with rainbow trout each spring.

**Lake On Three (Houghton County):** Lake On Three is a 25 acre lake with good depth profile of water reaching 45 deep. This is a clear-cold lake with water clarity of 17 feet. This lake has been managed as a trout fishery since 1960 with the stocking of brook trout and rainbow trout. An October 4-6, 2016 netting survey using two experimental mesh gill nets and three fyke nets found 44 largemouth bass, 17 pumpkinseed sunfish, and 8 rainbow trout ranging between 12-22 inches in size. This is a Type-B classified trout water, which means that the lake is open to fishing all year with a 12 inch minimum length possession for rainbow trout, and a daily possession limit of 5 trout of which no more than 3 may be of 15 inches or larger. The spring stocking of 1,250 yearling rainbow trout will be continued on an annual basis here.



Lake On Three Rainbow Trout

**Killdeer Lake (Iron County):** Killdeer Lake is a small 8 acre bog lake that is readily accessible to anglers. Annual fall stocking of 800 fingerling Assinica strain brook trout helps maintain the sport fishery here. This lake is a Type-A category sport fishing regulation lake, which means the open fishing season is from the last Saturday in April—September 30, no-minnows as bait, a 10 inch minimum size limit for brook trout, and a daily possession limit of 5 trout of which no more than 3 may be of 15 inches or larger. A netting survey was conducted during the period of October 4-6, 2016, using 3 fyke nets. Netting results captured 7 brook trout ranging from 9—16 inches, along with a variety of brook stickleback and mudminnows. The shoreline of this lake reflects moderate fishing pressure, and past survey write-ups comment that the regular fishing pressure is likely responsible for low abundances of legal-size trout. This is a very scenic lake, so if you are looking for a kayak or belly-boat fishery, Killdeer Lake would be a nice place to fish.

**McDonald Lake Impoundment (Gogebic County):** McDonald Lake is a Michigan DNR designated Family Friendly Fishing Water, which means this lake has good populations of fish which provide easy angling and catch rates for citizens who are looking for a place to take their family out fishing. A Gogebic County park and boat launch provides easy access to this lake, along with a small fishing pier next to the boat launch. Michigan DNR fisheries staff conducted a June 6-9, 2016 netting survey here using six fyke nets and two gill nets. Netting results caught abundant numbers of bluegill averaging 8 inches in size, along with abundant numbers of pumpkinseed sunfish averaging 6 inches in size, and fair numbers of black crappie averaging 10 inches in size.



McDonald Lake Impoundment

Northern pike and largemouth bass were also collected in this survey. This water body has very dark, shallow water with a multitude of submerged deadhead stumps, so if you navigate this water with a boat then you should proceed very carefully and slow.

**Middle Branch Ontonagon River, (Gogebic County):** This 500 foot survey station is located about five miles east of Watersmeet and is flanked by Russ's Road and an abandoned railroad grade. Four staff members used a barge electro-shocker boat collected 125 brook trout ranging from 4-10 inches in size. This is a non-stocked trout stream and the brook trout fishery is supported by wild natural reproduction.



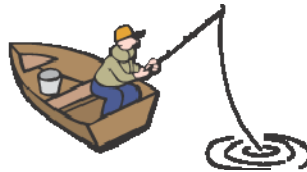
Walleye are one of the most sought after gamefish species of the Midwest. Through management techniques such as stocking, regulations, and habitat protection/improvement, fisheries managers work to keep Michigan's fisheries strong.

Regular fisheries surveys with electrofishing gear and/or nets, allows for evaluation of the fisheries management techniques to determine if the tools used are appropriate for the respective lake. Fisheries Division's management techniques are regularly reviewed in-house by peer staff to ensure for reasonable and science based plans. In 2014, Michigan DNR's Iron and Dickinson County walleye management techniques were evaluated by third party scientists consisting of Wisconsin DNR walleye researchers, for an objective and impartial assessment of our work. In 2016, Michigan State University's Quantitative Fisheries Center (QFC) conducted a management review of the Lake Gogebic walleye management program. Both reviews concluded that prudent and appropriate management was occurring with Michigan's waters, and additionally provided recommendations for improving management tools.

The QFC report, entitled Stock Assessment Review of Michigan's Lake Gogebic Walleye Fishery was published in December 2016 and is available at the DNR-Fisheries, West Lake Superior Management Unit website at [http://www.michigan.gov/dnr/0,4570,7-153-10364\\_52259\\_65090---,00.html](http://www.michigan.gov/dnr/0,4570,7-153-10364_52259_65090---,00.html) or can be mailed to you by contacting any Michigan DNR office. The QFC report concluded the following:

The following conclusions and recommendations were provided to stakeholders and the Michigan DNR.

- 1) There is no evidence that either fish stocking or habitat enhancements will have a major impact on the Lake Gogebic walleye population, but it's important to emphasize that past habitat enhancement efforts here and elsewhere have lacked adequate follow-up monitoring, so it is difficult to say much about the likely effects of future habitat work.
- 2) Given current low exploitation levels, there is no immediate need to reduce exploitation risk.
- 3) Further modeling exercises should be considered to inform decisions on possible changes to size limits, with special consideration for angler satisfaction and density-dependent growth.
- 4) Finally, the Michigan DNR should consider more regular assessment efforts in Lake Gogebic, given the size of the lake and regional importance of the fishery, to better inform future management decisions.



As part of the ongoing efforts to track the Lake Gogebic fishery, a fisheries survey will be conducted in the spring of 2017 to calculate a walleye population estimate as well as to assess the status of the fishery as a whole. Additionally a creel census clerk will be stationed at Lake Gogebic through the spring and summer of 2017 to document sport catch rates on gamefish, which will allow for a monitoring of the two following special sportfishing regulations here; (1) yellow perch, daily possession of no more than 25 fish of which 5 may be of 12 inches or larger, and (2) of the walleye daily possession limit of 5 fish of 15 inches and larger, 2 of these fish may be of 13 inches and larger.

### 2016 Walleye Stocking:

The following waters of the West Lake Superior Management Unit were stocked with walleye in June 2016. For information on other Upper Peninsula or statewide waters that received walleye allocations, please check the following Michigan DNR website, <http://www.michigandnr.com/fishstock/> or call any Michigan DNR office.

Water Body		# Stocked
Hoist Basin	Marquette	10,000
Portage Lake	Kewenaw	110,677
Duck Lake	Gogebic	15,400
Sunday Lake	Gogebic	5,000
Lake Independence	Marquette	10,000
Worm Lake	Baraga	10,000
Lac Labelle	Kewenaw	17,750
Huron Bay	Baraga	48,104



### 2016 Trout Stocking:

Some people ask why certain waters receive significant stocking allocations of trout when compared to other waters. The answer is that these are management experiments to evaluate the results of intensive stocking inputs with results to the sport fishery catch. A summary of Western UP trout stocking can be found at the last three pages of this newsletter or at the website mentioned above.



The following sportfishing regulation proposals are being considered for implementation on April 1, 2018

- On non-Type classified trout streams, we plan to change all trout (rainbow, brook, brown) minimum possession size limits to make them the same as what exists for Type-1 classified streams. Historically the minimum size limit (MSL) for brook trout on Upper Peninsula waters was 8 inches until the year 2000 when "Type" category stream regulations were enacted, and for Type-1 trout streams and the brook trout MSL was lowered to 7 inches. In 2000, when the MSL on the Type-1 streams across Michigan was lowered to 7 inches, the non-Type classified streams remained at an 8 inch minimum size for all species of trout. Therefore, the change for Type-1 brook trout MSL left non-classified trout streams with an 8 inch MSL for all trout, which made these streams more restrictive to anglers than a stream managed with a Type 1-4 designation. There is confusion to some trout stream anglers as to what the minimum size limit is for the stream on which they are fishing, sometimes not knowing whether they are fishing a Type-1 or non-classified stream. This size limit change for non-classified streams is an opportunity to simplify the Michigan trout fishing regulations.
- Coregonids are the family of fishes in the Great Lakes that include Lake Whitefish, Cisco (lake herring), and Round Whitefish (also known as menominee). Round Whitefish are currently not included within the general hook and line sportfishing regulations, therefore the current regulations are as follows:
  - 1. Lake Whitefish and Cisco (Lake Herring), no size limit and a daily possession limit of 12 in any combination. Possession season is open all year.
  - 2. Round Whitefish (menominee), no size limit and no limit on quantities to be possessed.It is proposed to include Round Whitefish and with the Lake Whitefish and Cisco under the general hook and line regulations, so that the daily possession limit will include all of these fish subspecies of coregonids.
- Hannah-Webb Lake (Iron County), we propose to remove Type-A sportfishing classification. Hannah Webb Lake has been managed for trout since 1944. A 2009 survey of the lake documented the presence (contamination) of bluegill, pumpkinseed sunfish, and yellow perch. Walleye, and northern pike were also collected. Angler and homeowner comments since the 2009 survey reflect a non-existent trout fishery combined with an abundance of yellow perch and panfish, and one fisherman caught a 44 inch northern muskellunge. Beginning in 2016, fisheries management of this lake was switched from a trout emphasis to a panfish/perch composition. Removal of the Type-A regulation will allow for winter ice fishing to a legal activity on this lake.
- Black River Lake (Gogebic County), we propose to remove the Type-B sportfishing classification thereby avoiding confusion to the public who might think that this is a stocked trout lake. Black River Lake is a shallow impoundment on the headwaters of Gogebic County's Black River. While this lake once had brook trout and rainbow trout as part of the fish community, there are no longer any trout in this impoundment and the fishery is dominated with black crappie, bluegill, and yellow perch. Trout stocking here would be inefficient due to the competition with the non-trout fish species. A rotenone chemical reclamation of the impoundment would be unsuccessful due to the presence of groundwater springs that exist, of which these springs would provide safe refuge for fish during a chemical treatment. The current fishery provides attractive public angling for the panfishes of crappie and bluegill, therefore continued management of this impoundment as a family friendly panfish lake would be the most prudent function of this lake.



**The following sportfishing regulation proposals are being considered for implementation on April 1, 2018**

- Lake Roland and Gerald (Houghton County), we propose to remove the Type-B inland trout lake designation, thereby effectively changing the current 15"-inch minimum size limit for rainbow trout, lake trout and splake to 8-inches. By removing the Type-B regulation, and having this lake be a non-classified inland trout water, the daily possession limit would remain at 5 fish of which no more than 3 may be of 15-inches or larger. Located 26 miles southwest of the cities of Houghton/Hancock, Lakes Roland and Gerald provide 552 acres of trout and panfishing opportunity. These lakes have been largely managed for walleye, bass, and panfish since the 1930's. Stocking of rainbow trout began in 1972. In recent years, trout survival has diminished, possibly due to warmer lake waters combined with increases in nutrient loading. Michigan DNR Fisheries stocks an average of 6,500 yearling rainbow trout on an annual springtime basis, with the stocked fish averaging 6-7 inches in length. In recent years lake trout have also been stocked into these lakes, often with these fish averaging 13-14 inches in length. Current sportfishing regulations for Lake Roland and Gerald allow for a minimum size limit of 12 inches for keeping rainbow trout and 15 inches for keeping lake trout. With numerous cabin owners at these lakes, along with the 175 acre Twin Lakes State Park, fishing pressure is quite steady year round. Sublegal size rainbow trout and lake trout are often caught and released by novice anglers who put stress on these fish when handling them for the removal of hooks. This handling stress is particularly acute soon after springtime fish stocking when the trout are easiest to catch. With an 8-inch minimum size limit, most of the trout within Lakes Roland and Gerald would be of legal size. The lower minimum size limit also will allow more anglers to keep their fish. In addition, the removal of the current Type-B fishing regulation will help simplify overall sportfishing regulations.
- Quality walleye size limit regulation. The proposed change will have a common quality walleye regulation for the Ontonagon River, Portage/Torch Lake, and Little Bay de Noc as follows; 15 inch minimum size, 5 daily possession limit, only one walleye can be 23 inches or larger. The current mix of quality walleye regulations of one fish over a specified length is confusing to sport anglers, and the angling community has requested that we standardize the quality walleye regulation to one designated type. As community groups see the expansion of quality size walleye regulations, there has been a mix of different proposals for size lengths, slot limits, season adjustments, and other regulation types. Conversion to a designated quality regulation will provide a common guideline to aide stakeholder groups who wish to propose a quality walleye regulation for other waters. This regulation change will only effect walleye size limits in the above three mentioned waters. The daily possession limit and fishing seasons will remain the same.



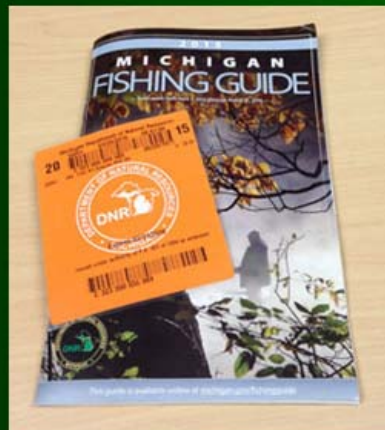
## Lake Superior Chinook salmon stocking analysis

	2012	2013	2014	2015	Total
Number stocked	406,730	342,861	392,590	408,365	1,550,546
Stocking cost	\$ 105,750	\$ 89,144	\$ 102,073	\$ 106,175	\$ 403,142
Pct of harvest from stocking	<1%	<1%	<1%	<1%	
Pct return from stocking	0.0148%	0.0168%	0.0059%	0.0057%	
Cost/fish harvested	\$ 1,762	\$ 1,543	\$ 4,382	\$ 4,558	



## Cost of Chinook per fishing license

If you figure the average cost of a Chinook caught by a sport angler at \$3,000 per fish, it would take 115 Michigan Fishing licenses to cover the cost of that fish.



If you figure the entire cost of Michigan’s Lake Superior Chinook stocking program, it would take 6,615 Michigan Fishing licenses to cover the \$172,000 cost of a one year stocking allocation. Michigan DNR has ceased stocking Chinook in Lake Superior based on these results.

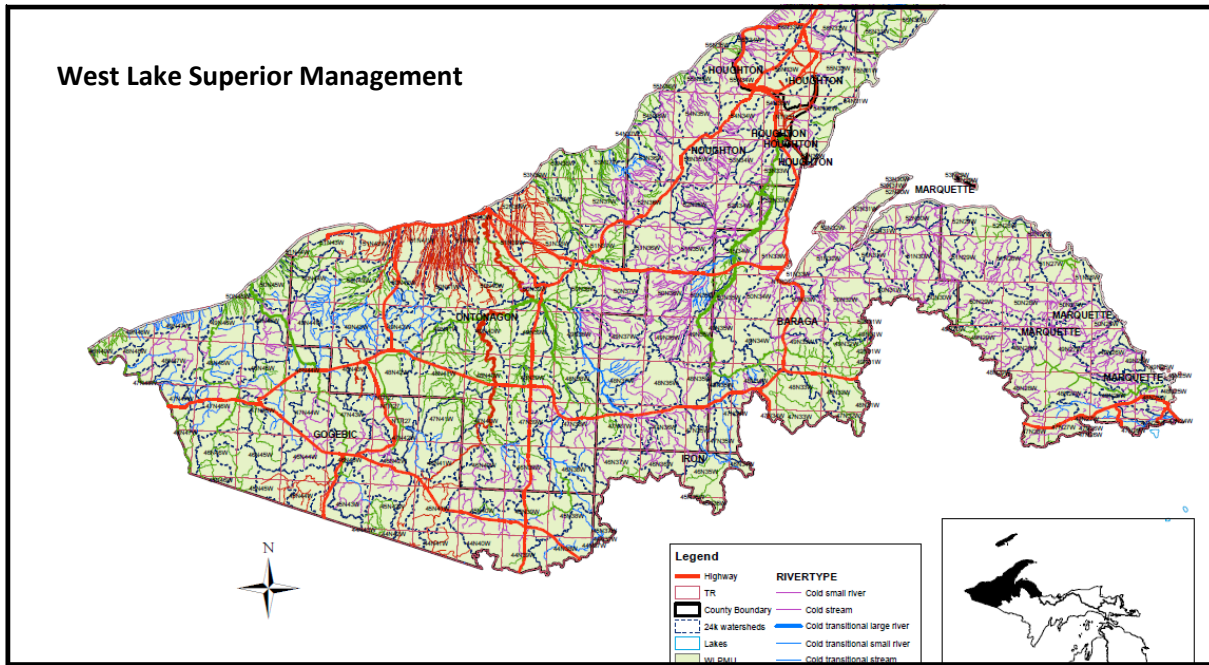


### Conversations and Coffee (WLSMU 2017 spring meetings):

- April 5, 2017, Ishpeming Township Hall  
7:00 – 9:00 eastern time.
- April 12, 2017, Gogebic Community College  
6:00 – 8:00 central time.
- April 13, 2017, Portage Lake District Library – Houghton  
7:00 – 9:00 eastern time.

Conversations and Coffee meetings are held throughout Michigan each spring to allow citizens the opportunity to hear what activities are occurring in their area, and to get public feedback with ongoing fisheries management programs. These meetings are good venues to ask questions and to propose requests on ideas that local anglers and citizens might have. If your schedule does not allow for you to attend one of these meetings, please feel free to call our fisheries staff and we will share the presentation summaries with you.





## Fisheries Division Website

There are numerous links on Fisheries Division’s website that will help you with your fishing experience. Many of these links are very handy with smartphone technology.

### Fishing - Michigan.gov/fishing



With best wishes for an enjoyable and productive 2017 fishing season

*George Madison*

George Madison

### Contact Information

George Madison, Fisheries Division  
 Baraga Operations Service Center  
 427 US-41 North  
 Baraga, Michigan 49908  
 Phone: (906) 353-6651 ext. 119

# West Lake Superior Unit Stocking Summary

Check out where we stock fish: The following is a summary of the fish that were stocked in the West Lake Superior Management Unit waters. You can check out where fish are stocked in other areas of Michigan by visiting the following DNR website: <http://www.michigandnr.com/fishstock/>

County	Water Body	Town	Range	Sec.	Species	Strain	Date	Number	Length	Operation	Fin Clips
Baraga	Alberta Pond	49N	33W	18	Brook trout	Assinica	04/28/2016	1100	8.07	State Plant	none
Baraga	Alberta Pond	49N	33W	18	Brook trout	Assinica	11/22/2016	175	14.45	State Plant	none
Baraga	East Branch Huron River	52N	30W	36	Rainbow trout	Michigan	05/18/2016	21000	8.27	State Plant	none
Baraga	Falls River - Golf Course Rd	50N	33W	16	Rainbow trout	Michigan	05/10/2016	15000	7.91	State Plant	none
Baraga	Lake Alice	50N	30W	29	Splake	Hybrid	05/10/2016	2250	8.27	State Plant	none
Baraga	Lake Superior - Huron Bay	52N	31W	27	Walleye	Bay De Noc	07/02/2016	48104	1.73	State Plant	none
Baraga	Lake Superior - Keweenaw Bay	50N	34W	1	Splake	Hybrid	05/20/2016	16208	8.62	State Plant	none
Baraga	Roland Lake	51N	31W	12	Brook trout	Assinica	04/28/2016	1500	8.07	State Plant	none
Baraga	Roland Lake	51N	31W	12	Brook trout	Assinica	11/22/2016	180	14.45	State Plant	none
Baraga	Sturgeon River @ M-38	51N	34W	28	Lake sturgeon	Sturgeon-Baraga	06/07/2016	22410	0.75	State Plant	none
Baraga	Worm (Vermilac) Lake	48N	34W	24	Walleye	Bay De Noc	06/28/2016	9979	1.85	State Plant	none
Gogebic	Beatons Lake	45N	41W	1	Rainbow trout	Eagle Lake	05/11/2016	5000	6.14	State Plant	none
Gogebic	Beatons Lake	45N	41W	1	Splake	Hybrid	04/28/2016	5000	7.95	State Plant	none
Gogebic	BLACK R. Hedberg Rd.	48N	46W	32	Brook trout	Assinica	05/05/2016	510	8.31	State Plant	none
Gogebic	BLACK R. Mosinee Grade	46N	46W	28	Brook trout	Assinica	05/05/2016	510	8.31	State Plant	none
Gogebic	BLACK R. Hedberg Rd.	48N	46W	32	Brown trout	Wild Rose	05/18/2016	500	7.72	State Plant	none
Gogebic	Black River Camp Nine Rd.	48N	46W	17	Brown trout	Wild Rose	05/18/2016	500	7.72	State Plant	none
Gogebic	Castle Lake	45N	38W	9	Brook trout	Assinica	10/26/2016	2800	6.06	State Plant	none
Gogebic	Castle Lake				Brook trout	Assinica	11/28/2016	150	14.45	State Plant	none
Gogebic	Cornelia Lake	45N	42W	25	Brook trout	Assinica	04/26/2016	1050	8.15	State Plant	none
Gogebic	Duck Lake	44N	39W	20	Walleye	Bay De Noc	06/29/2016	15389	1.85	State Plant	none
Gogebic	Imp Lake	44N	38W	16	Splake	Hybrid	04/26/2016	3360	7.76	State Plant	none
Gogebic	BLACK RIVER HARBOR	49N	46W	3	Brown trout	Wild Rose	05/18/2016	8000	7.72	State Plant	none
Gogebic	BLACK RIVER HARBOR	49N	46W	3	Chinook salmon	Michigan	05/11/2016	70800	3.23	State Plant	adipose
Gogebic	BLACK RIVER HARBOR	49N	46W	3	Rainbow trout	Michigan	05/11/2016	15000	8.23	State Plant	none
Gogebic	Little Duck Lake	44N	39W	7	Rainbow trout	Eagle Lake	05/11/2016	2100	6.14	State Plant	none
Gogebic	Massie Park Pond	47N	46W	9	Brook trout	Tobin Harbor	05/10/2016	25	15.00	Federal Plant	none
Gogebic	Montreal River	47N	47W	34	Brown trout	Gilchrist Creek	05/11/2016	800	5.20	State Plant	none
Gogebic	Moon Lake	44N	39W	33	Splake	Hybrid	04/28/2016	2325	7.95	State Plant	none
Gogebic	Powder Mill Cr. @ Harding Rd	47N	46W	29	Brook trout	Assinica	05/05/2016	500	8.31	State Plant	none
Gogebic	Powder Mill Cr. @ Hill Avenue	47N	46W	17	Brook trout	Assinica	05/05/2016	500	8.31	State Plant	none
Gogebic	Powder Mill Cr. @ Old Co. Rd.	47N	46W	16	Brook trout	Assinica	05/05/2016	500	8.31	State Plant	none
Gogebic	Powder Mill Cr. @ US-2	47N	46W	8	Brook trout	Assinica	05/05/2016	500	8.31	State Plant	none
Gogebic	Presque Isle River Flooding	46N	43W	32	Bluegill		05/17/2016	1000	4.00	Private Plant	none
Gogebic	Presque Isle River Flooding	46N	43W	32	Brook trout		05/17/2016	1000	5.00	Private Plant	none
Gogebic	Redboat Lake	46N	44W	35	Brook trout	Assinica	10/21/2016	2000	6.06	State Plant	none
Gogebic	Sunday Lake	47N	45W	8	Walleye	Bay De Noc	06/29/2016	5033	1.85	State Plant	none
Gogebic	Thousand Island Lake	44N	41W	11	Muskellunge	Northern	10/17/2016	200	13.00	Private Plant	none
Gogebic	Thousand Island Lake	44N	41W	11	Walleye	Bay De Noc	10/17/2016	5000	8.00	Private Plant	none

# West Lake Superior Unit Stocking Summary

County	Water Body	Town	Range	Sec.	Species	Strain	Date	Number	Length	Operation	Fin Clips
Houghton	Clear Lake	51N	36W	4	Brook trout	Assinica	04/28/2016	1900	8.07	State Plant	none
Houghton	E. Br. Ontonagon R. @ Lk 13 Rd	47N	36W	15	Rainbow trout	Michigan	05/24/2016	24800	8.07	State Plant	none
Houghton	Emily Lake	52N	36W	34	Rainbow trout	Eagle Lake	05/17/2016	5000	6.69	State Plant	none
Houghton	Lake On Three	47N	36W	34	Rainbow trout	Eagle Lake	05/17/2016	1250	6.69	State Plant	none
Houghton	Lake Perrault	54N	35W	34	Brook trout	Assinica	10/25/2016	3250	6.06	State Plant	none
Houghton	Lake Perrault				Brook trout	Assinica	11/29/2016	165	9.80	State Plant	none
Houghton	Lake Roland	52N	36W	22	Rainbow trout	Eagle Lake	05/17/2016	6500	6.69	State Plant	none
Houghton	Penegor Lake	49N	36W	30	Brook trout	Assinica	10/25/2016	440	6.06	State Plant	none
Houghton	Portage Lake - Chassell	54N	33W	32	Walleye	Bay De Noc	05/17/2016	100000	0.35	State Plant	none
Keweenaw	Lac La Belle	58N	29W	32	Walleye	Bay De Noc	06/30/2016	17750	2.01	State Plant	none
Keweenaw	Lake Fanny Hooe	59N	28W	32	Lake trout	Klondike Reef	10/05/2016	100	24.10	Federal Plant	none
Keweenaw	Lake Medora	58N	29W	9	Lake trout	Seneca Lake	10/05/2016	500	12.00	Federal Plant	adipose
Keweenaw	Lake Medora	58N	29W	9	Rainbow trout	Michigan	10/06/2016	20904	3.46	State Plant	none
Keweenaw	COPPER HARBOR	59N	28W	32	Splake	Hybrid	05/16/2016	25000	8.27	State Plant	none
Keweenaw	Lost Lake	58N	28W	14	Brook trout	Assinica	10/25/2016	600	6.06	State Plant	none
Keweenaw	No Name Pond	57N	31W	8	Brook trout	Assinica	05/13/2016	280	8.54	State Plant	none
Marquette	Carp River @ M-35	48N	26W	34	Brook trout	Assinica	04/26/2016	830	8.15	State Plant	none
Marquette	Carp River @ North Rd.	48N	26W	30	Brook trout	Assinica	04/28/2016	830	8.07	State Plant	none
Marquette	Carp River @ M-35	48N	26W	34	Brook trout	Assinica	05/13/2016	200	8.54	State Plant	none
Marquette	Carp River @ Ski Hill	48N	25W	34	Chinook salmon	Michigan	05/16/2016	93703	3.43	State Plant	adipose
Marquette	Carp River @ Ski Hill	48N	25W	34	Rainbow trout	Michigan	04/21/2016	7000	8.15	State Plant	none
Marquette	Carp River @ Ski Hill	48N	25W	34	Rainbow trout	Michigan	04/21/2016	7000	8.15	State Plant	none
Marquette	Clear Lake	48N	29W	5	Brook trout	Assinica	05/10/2016	1342	8.15	State Plant	none
Marquette	Conway Lake	52N	28W	26	Walleye	Bay De Noc	11/01/2016	1800	7.00	Private Plant	none
Marquette	Dead River @ Wright Street	48N	25W	9	Brown trout	Gilchrist Creek	05/23/2016	434	5.39	State Plant	none
Marquette	Dead River @ Mouth	48N	25W	10	Chinook salmon	Michigan	05/27/2016	93481	3.23	State Plant	adipose
Marquette	Howe Lake	52N	29W	23	Brown trout		05/12/2016	300	9.00	Private Plant	none
Marquette	Howe Lake	52N	29W	23	Rainbow trout	Gerrard Kamloop.	05/12/2016	200	9.00	Private Plant	none
Marquette	Lake Angeline	47N	27W	10	Rainbow trout	Eagle Lake	06/06/2016	6561	6.93	State Plant	none
Marquette	Lake Angeline	47N	27W	10	Splake	Hybrid	05/18/2016	5886	8.54	State Plant	none
Marquette	Lake Angeline	47N	27W	10	Splake	Hybrid	05/19/2016	4114	8.50	State Plant	none
Marquette	Lake Ann	52N	29W	25	Brown trout		05/12/2016	150	9.00	Private Plant	none
Marquette	Lake Ann	52N	29W	25	Rainbow trout	Gerrard Kamloop.	05/12/2016	150	9.00	Private Plant	none
Marquette	MARQUETTE BAY-SPEARS COAL DOCK	48N	25W	23	Brook trout	Tobin Harbor	05/10/2016	5000	4.29	Federal Plant	adipose
Marquette	MARQUETTE BAY-SPEARS COAL DOCK	48N	25W	23	Splake	Hybrid	05/18/2016	25000	8.54	State Plant	none
Marquette	Partridge Creek	47N	27W	3	Brook trout	Assinica	10/25/2016	200	6.06	State Plant	none
Marquette	Hoist Basin (Dead R Basin)	48N	26W	8	Walleye	Bay De Noc	06/28/2016	9979	1.85	State Plant	none

# West Lake Superior Unit Stocking Summary

County	Water Body	Town	Range	Sec.	Species	Strain	Date	Number	Length	Operation	Fin Clips
Marquette	Teal Lake	48N	26W	31	Muskellunge	Great Lakes	11/03/2016	699	8.35	State Plant	none
Marquette	Upper Dead River below Silver Lake	49N	28W	17	Brook trout	Assinica	05/04/2016	610	7.72	State Plant	none
Marquette	Yellow Dog River - Mulligan Truck Trail	50N	29W	13	Brook trout	Assinica	05/04/2016	3100	7.72	State Plant	none
Marquette	YELLOW DOG RIVER-Bushy Creek Truck Trail	50N	27W	17	Brown trout	Gilchrist Creek	05/23/2016	2076	5.39	State Plant	none
Marquette	YELLOW DOG RIVER-(washout bridge above 510)	50N	28W	13	Brown trout	Gilchrist Creek	05/23/2016	1000	5.39	State Plant	none
Marquette	YELLOW DOG RIVER-(Bob Lk Crossing)	50N	28W	20	Brown trout	Gilchrist Creek	05/23/2016	1028	5.39	State Plant	none
Marquette	YELLOW DOG RIVER-Bushy Creek Truck Trail	50N	27W	17	Rainbow trout	Eagle Lake	05/23/2016	2000	6.69	State Plant	none
Marquette	YELLOW DOG RIVER-(washout bridge above 510)	50N	28W	13	Rainbow trout	Eagle Lake	05/23/2016	1000	6.69	State Plant	none
Marquette	YELLOW DOG RIVER-(Bob Lk Crossing)	50N	28W	20	Rainbow trout	Eagle Lake	05/23/2016	1000	6.69	State Plant	none
Ontonagon	Big Iron River @ Silver City	51N	42W	12	Brown trout	Wild Rose	05/27/2016	10000	6.72	State Plant	none
Ontonagon	Big Iron River @ Silver City	51N	42W	12	Chinook salmon	Michigan	05/10/2016	56400	2.95	State Plant	adipose
Ontonagon	Courtney Lake	50N	37W	4	Brook trout	Assinica	11/22/2016	180	14.45	State Plant	none
Ontonagon	Firesteel River @ Hardley Able Bridge	52N	38W	27	Rainbow trout	Michigan	04/28/2016	15194		State Plant	none
Ontonagon	M. Br. Ontonagon River south of M-28	47N	39W	36	Brook trout	Assinica	05/11/2016	4606	7.76	State Plant	none
Ontonagon	Mirror Lake	50N	44W	2	Splake	Hybrid	03/04/2016	2400	7.48	State Plant	none
Ontonagon	Ontonagon River - net pen	52N	40W	25	Chinook salmon	Michigan	05/27/2016	19800	3.35	State Plant	adipose
Ontonagon	Ontonagon River @ M-45	50N	39W	27	Lake sturgeon	Sturgeon-Baraga	08/01/2016	263	7.64	State Plant	PIT tag
Ontonagon	Ontonagon R. @ Victoria Road Bridge	50N	39W	20	Lake sturgeon	Sturgeon-Baraga	10/04/2016	263	7.64	State Plant	PIT tag
Ontonagon	Trout Creek Pond	47N	38W	14	Brook trout	Assinica	05/11/2016	250	7.76	State Plant	none

