

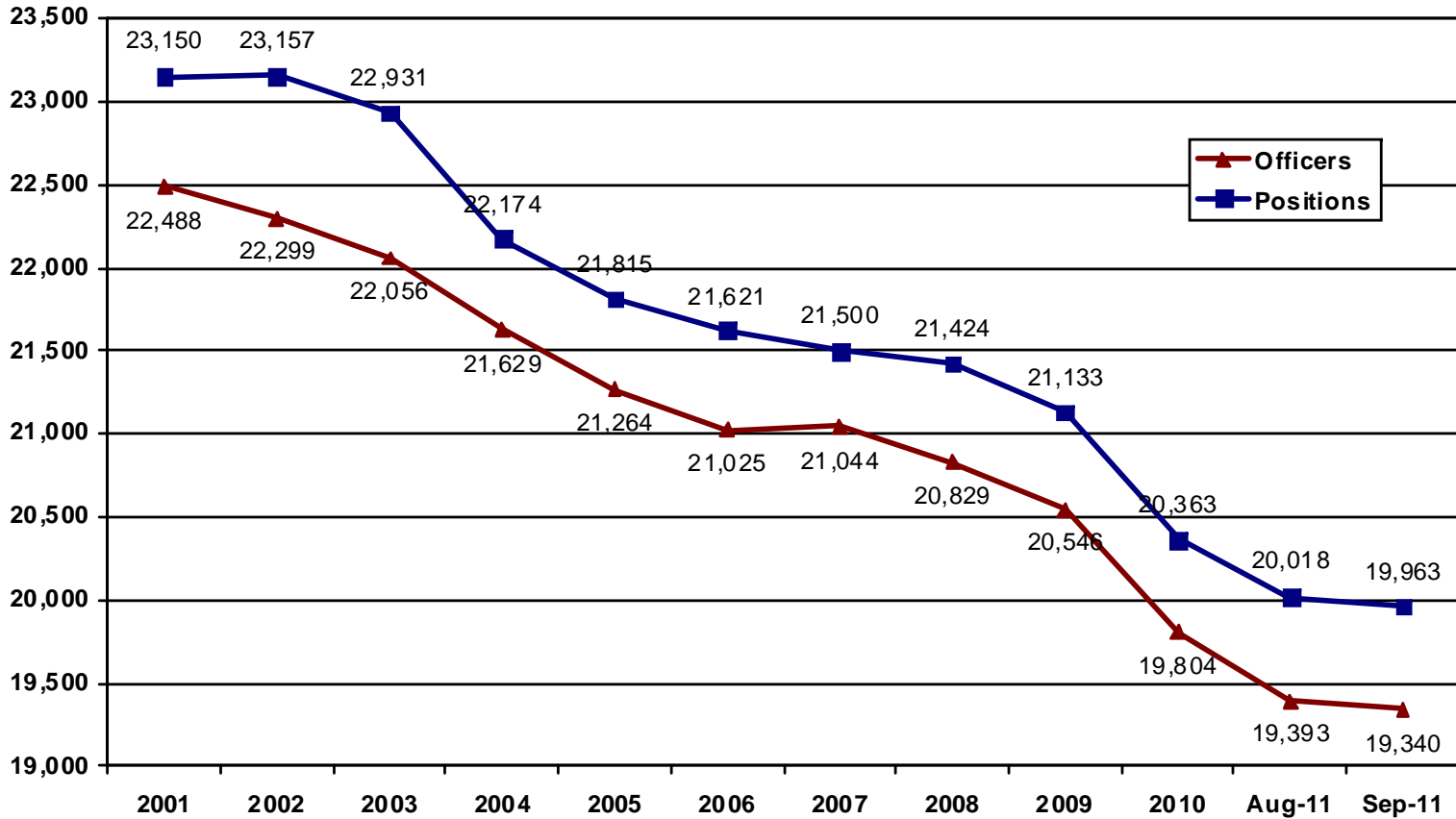
**Michigan Commission on Law Enforcement Standards
Law Enforcement Population Trends**

Law Enforcement Agencies

Year	2001	2002	2003	2004	2005	2006	2007	2008	2009	2010	08/2011	09/2011	1 Month	Overall
Agencies	613	613	615	610	609	608	609	608	611	609	609	608	-1	-5

Law Enforcement Positions and Officers¹

Year	2001	2002	2003	2004	2005	2006	2007	2008	2009	2010	Aug-11	Sep-11	1 Month	Overall
Positions	23,150	23,157	22,931	22,174	21,815	21,621	21,500	21,424	21,133	20,363	20,018	19,963	-55	-3,187
Officers	22,488	22,299	22,056	21,629	21,264	21,025	21,044	20,829	20,546	19,804	19,393	19,340	-53	-3,148



¹ Positions, whether full or part time, include officers who may have multiple law enforcement employment relationships, i.e. one officer employed at two agencies counts as two positions. Historical data (2001-2010) is a snapshot of law enforcement positions taken on 12/31 of each calendar year. The 2011 data is current as of 10/01/2011.