

## Preparedness and Planning

### Plague And Tularemia Detection Kits Receive FDA Clearance

Idaho Technology, Inc. (ITI) announced clearance from the Food and Drug Administration (FDA) for marketing of two new biothreat detection kits, the Joint Biological Agent Identification and Diagnostic System plague and tularemia Detection Kits. Both kits utilize real-time polymerase chain reaction technology to identify the causative agents of plague (*Yersinia pestis*) and tularemia (*Francisella tularensis*).

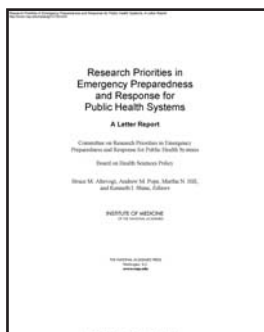


©1997 The Learning Company, Inc.

### Public Health Preparedness Research Priorities

This report delineates a set of research priorities for emergency preparedness and response in public health systems that are relevant to the specific expertise at schools of public health. The Coordinating Office for Terrorism Preparedness and Emergency Response (COTPER) will use these priorities to develop research funding opportunity announcements that must be issued and filled, according to congressional mandate, during the 2008 fiscal year. The committee considered areas of interest specifically articulated in the Centers for Disease Control's (CDC's) *Advancing the Nation's Health: A Guide for Public Health Research Needs, 2006–2015*, with special attention given to:

- Protecting vulnerable populations in emergencies (improving the identification of health vulnerability and evaluating interventions to lessen the risk of poor health outcomes);
- Strengthening response systems (developing and evaluating integrated systems of emergency public health services and incident management); preparing the public health workforce (developing and evaluating strategies and tools to train and exercise the public health workforce to meet responsibilities for detection, mitigation, and recovery in varied settings and populations);
- Improving timely emergency communications (evaluating characteristics of effective risk communication in emergency settings and system enhancements to improve effective information exchange across diverse partners and populations under emergency conditions); and
- Improving information management to increase use (scenario modeling and forecasting; information and knowledge management tools to improve the availability and usefulness during crisis decision making).



## News

### Influenza Vaccine Developments

Recent research has led to several promising leads in the search for a new influenza vaccine. There are some indications that an oral or nasal powder vaccine may arrive in the near future. Similarly, a shorter production time is right around the corner for conventional influenza vaccines. Read pages 2-3 for more information.

### Drug Resistant Flu in Europe

A small number of flu viruses resistant to Tamiflu®, a top antiviral drug, have been detected in Europe. See page 4 for full details.

### Region 7 to Conduct Full-Scale Exercise

CHEMTERR-08 is planned for mid-June 2008. The exercise will test four objectives identified by the region, focusing on (1) area & unified command, (2) CHEMPACK deployment, (3) victim & responder tracking, and (4) on-scene & hospital-based decontamination. See page 7 for more information.

## Table of Contents...

|                                 |   |
|---------------------------------|---|
| Preparedness and Planning ..... | 1 |
| Surveillance .....              | 3 |
| Pandemic Planning .....         | 5 |
| Regional News .....             | 7 |
| Other News .....                | 7 |
| Training & Education .....      | 8 |

Read the Next *Guardian* Issue:  
February 22, 2008

### **School Infectious Disease Plans**

The U.S. Department of Education recently released [\*Managing an Infectious Disease Outbreak in a School\*](#). The document provides suggestions for school districts to consider when developing emergency management plans that incorporate planning for an infectious disease outbreak.

### **Citizenship Documents Needed to Cross Border**

The U.S. Department of Homeland Security (DHS) reminds travelers that beginning January 31, 2008, border crossers will be asked to present [documents denoting citizenship](#) and identity when entering the United States through land and sea ports of entry. This change primarily affects United States and Canadian citizens, who have previously been permitted entry by oral declaration alone, and marks the transition toward standard and consistent documents for all travelers entering the country. It is also the start of a more robust and concerted public education campaign, intended to inform travelers of document requirements that will be implemented next year.



### **Kansas Vulnerable Populations Outreach**

This [Special Needs Populations Assessment Toolkit](#) represents part of a pandemic influenza mapping and outreach project conducted by the Kansas Association of Local Health Departments. The toolkit provides detailed assessments for needs experienced by the elderly; disabled; non-English speakers; and people who live in shelters, institutional facilities, and other specialized housing. The household survey queries families with vulnerable members about medical needs, disability status, and general preparedness requirements. The agency needs assessment asks organizations in the community about the populations they serve, communication mechanisms, and preparedness status. This toolkit may be quite useful as agencies identify the populations on whom they need to focus their efforts.

### **Universal Influenza Vaccine?**

On January 3, 2008, Acambis plc, a British–American vaccine development company, issued a [press release](#) announcing positive preliminary results from two studies of its universal influenza vaccine, ACAM-FLU-A™. Currently available vaccines for influenza A primarily target specific antigenic sites on the hemagglutinin surface glycoprotein. These sites are constantly changing due to mutation. Therefore, vaccines developed against one influenza A strain may afford limited protection against another strain, even if they are closely related. For this reason, annual flu vaccination is needed to provide maximal protection. A “universal” influenza vaccine, on the other hand, is one that may provide immunity to many or all influenza A strains. To be successful, a [universal vaccine](#) must target an antigen that is highly conserved, which means that it changes very little from strain-to-strain.

### **Oral Flu Vaccine?**

Relief may be on the way for those youngsters trembling at the thought of another needle jab. One day the flu vaccine may be placed under the tongue. Korean researchers say the new vaccine worked in mice, avoiding not only the painful prick but also the discomfort some people feel from the inhaled vaccine. The research reported its findings the online edition of Proceedings of the National Academy of Sciences. Better ways of delivering vaccine have long been under study, ranging from orally to inhaled, but all seem to have drawbacks. Two doses of influenza vaccine under the tongue of mice primed the animals’ immune system to fight off what would otherwise have been a deadly dose of flu. The [under-the-tongue vaccine](#) worked whether it was a live or inactivated virus.

### **Nasal Powder H5N1 Avian Influenza Vaccine**

Carrington Laboratories, Inc. announced that its wholly owned DelSite Biotechnologies, Inc. subsidiary has successfully completed pre-clinical toxicology studies of its GelVac™ nasal powder influenza vaccine under FDA-reviewed protocols. Successful toxicology studies in two animal models using the H5N1 (bird flu) antigen were required in order to proceed with a planned Phase I clinical trial later this year. The bird flu antigen used in these pre-clinical studies was from a non-egg-based source. This vaccine candidate is believed to be the only nasal powder vaccine under development that, if approved, could be shipped without refrigeration to peoples' homes and self-administered in the event of a pandemic outbreak of avian bird flu.



### **Vaccine Holds Hope of Stopping Influenza Pandemic**

Kaiser Permanente's Vaccine Study Center in Northern California is conducting a clinical trial of Protein Sciences' genetically engineered pandemic flu vaccine, FluBlok®. The vaccine is produced by inserting an insect virus containing influenza proteins into cell cultures from a caterpillar; the protein generates an immune response and is quickly replicated in the cell along with the virus. Given that it takes only four weeks to prepare the FluBlok® vaccine for shipment, versus upwards of six months for conventional vaccines involving the incubated eggs, experts believe the vaccine has the best chance of meeting the needs of the population during a pandemic.

### **Human Tests on Fast-Track Avian Flu Vaccine**

Avian flu vaccine research conducted by a team from the University of Pittsburgh has generated some excitement because of the development of technology that would enable a vaccine to be manufactured in two months. Production speed is critical because a mutated bird flu virus could reach pandemic levels in two weeks, according to the scientists. The goal is to manufacture an avian flu vaccine within one month after the virus has been isolated.

### **Infant Study Casts Doubt on Vaccine-Autism Link**

Researchers at the University of Rochester in New York report that thimerosal, the mercury-containing preservative used to prevent bacterial contamination in vaccines, does not cause nerve damage or cause autism in children because it vacates their bodies too quickly. Published in the journal *Pediatrics*, the study examines the blood-mercury levels of 216 infants at R. Gutierrez Children's Hospital in Argentina, prior to and after newborn, two-month, and six-month vaccinations. Researchers discovered that the half-life of the ethyl mercury used in the vaccine preservative was just 3.7 days, versus the 44-day half-life of methyl mercury. The researchers also noted that safe levels of methyl mercury were detected in many of the infants' blood prior to their very first vaccinations. *Pediatrics* is a members' only website.

## **Surveillance**

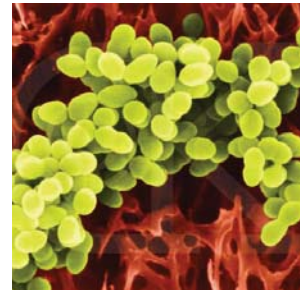
### **Bangkok International Conference on Avian Influenza**

The Bangkok International Conference took place at the end of January 2008 in Bangkok, Thailand. The forum provided ample opportunity for sharing knowledge, particularly lessons learned during the last three years. The conference also facilitated international understanding and collaboration, which is obviously essential for handling this global threat. Some key reports from the conference are listed below.

- Bird Flu Under-reported in Children. Bird flu infections in some children may be going undetected because the virus causes mild or no symptoms, researchers in Cambodia found, indicating more human cases have probably occurred than have been officially recorded.
- Crucell, a Dutch biotechnology company, reported that engineered human monoclonal antibodies to the H5N1 virus protected mice from several strains of the virus. Crucell created the human antibodies by mixing antibody fragments taken from 9 blood donors with antigens from two H5N1 strains found in VietNam and Indonesia.

### **Influenza-Associated Pediatric Mortality and *Staphylococcus aureus* Co-infection**

Since 2004, the Influenza-Associated Pediatric Mortality Surveillance System, part of the Nationally Notifiable Disease Surveillance System, has collected information on deaths among children due to laboratory-confirmed influenza, including the presence of other medical conditions and bacterial infections at the time of death. Data on the presence (or absence) of bacterial co-infections were recorded for 69 of these cases; 30 (44%) had a bacterial co-infection, and 22 (73%) of these 30 were infected with *Staphylococcus aureus*. Health care providers should be alerted to the possibility of bacterial co-infection among children with influenza.



### **Drug-resistant Flu Is Found in Europe**

A small number of flu viruses resistant to Tamiflu®, a top antiviral drug, have been detected in Europe. Data from more than a dozen European countries show that Tamiflu® doesn't work in about 13 percent of H1N1 viruses, the main flu strain causing illness this year. In the United States, nearly 3 percent of tested flu samples have been resistant. The highest resistance levels have been found in Norway, where nearly 70 percent of tested strains have been resistant. Experts are worried that if the resistance becomes widespread, Tamiflu®, one of the best tools for fighting flu, might become useless. But the resistant H1N1 strains do not mean that H5N1, the bird flu many experts fear could spark a flu pandemic, will develop similar resistance. However, experts believe that relying exclusively on Tamiflu® is unwise. Public health agencies say their recommendations on Tamiflu® use remain unchanged.

*Excerpted from Maria Cheng / AP Medical Writer*

### **WHO Catalogs H5N1 Viruses, Launches Tracking System**

On the heels of the report on H5N1 specimens submitted, the World Health Organization (WHO) unveiled an online system to provide information on H5N1 specimens shared with WHO through its Global Influenza Surveillance Network. The system permits anyone to search for particular isolates by date of submission, source country, host species, and several other variables. The system provides a page of detailed information for each isolate, including a list of all the laboratories to which the virus has been distributed, including pharmaceutical companies.

### **Bird Flu Is Still Hazardous to Birds**

Last year, for the first time since avian flu emerged as a global threat, the number of human cases was down from the year before. There were 86 confirmed human cases in 2007 compared with 115 in 2006, and 59 deaths compared with 79. H5 viruses have been around for 100 years and never caused a pandemic and probably never will, but preparedness efforts are still important because of the "knock-on effect" for a pandemic from an H1, H2 or H3, the subtypes responsible for six previous epidemics. Avian influenza is still lethal and widespread in birds.

## CDC Emergency MedKit Evaluation Study Summary Fact Sheet

The overarching aim of the emergency MedKit evaluation study was to evaluate a strategy that addresses the timeliness of distributing antibiotics to the general public as an effective measure against a release of anthrax. This [fact sheet](#) presents five modalities for bolstering the nation's capacity to respond to large-scale events by providing the necessary countermeasures to the population in a timely manner.

## Pandemic Planning

### Fatality Management during a Pandemic

Two white papers identify key issues that need to be addressed when considering fatality management during an influenza pandemic. Information focuses primarily on morgue operations during a pandemic. The papers address issues such as how to identify unattended remains; prioritize Medical Examiner/Coroner services; expedite processing of remains; recruit volunteers and vehicles to transport remains; and process death certificates. Recommendations include creating a separate Emergency Support Functions to deal exclusively with mass fatalities during a pandemic and creating memoranda of understanding with pathologists, anthropologists, dentists, and other professionals with similar skill sets. [These documents](#) offer valuable information on dealing with excess mortality expected during a pandemic.

### Comments on the ECDC Interim Guide

Dr. Susan Chu, editor of FluWiki, has written a [response](#) to the European Center for Disease Prevention and Control (ECDC) [Interim Guide to Public Health Measures](#). Dr. Chu is involved with public engagement of public health policy and interventions.

### Influenza-Testing and Antiviral-Agent Prescribing Practices

To assess influenza-testing and antiviral-agent [prescribing practices](#) during the 2006--07 influenza season, personnel at four of 10 Emerging Infections Program (EIP) sites with influenza hospitalization surveillance surveyed PCPs. This report describes the results of that survey, which indicated that 69.0% of the PCPs administered influenza tests to patients who had ILI during the influenza season and 53.8% prescribed antiviral agents, including two (i.e., amantadine and rimantadine) no longer recommended by CDC. Health agencies, medical societies, and continuing medical education organizations should advance programs for physicians that increase awareness of recommendations regarding appropriate influenza testing and use of antiviral agents.



### Maritime Quarantine in South Pacific Jurisdictions, 1918–19 Influenza Pandemic

Researchers reviewed [mortality data](#) from eleven South Pacific Island jurisdictions during the 1918–19 influenza pandemic. Four of the jurisdictions appear to have successfully delayed or excluded the arrival of pandemic influenza by imposing strict maritime quarantine. They also experienced lower excess death rates than the other jurisdictions that didn't apply quarantine measures.

### **Parents' Guide to Pandemic Influenza**

This brief [handbook](#), from Kalamazoo County Health and Community Services Department, provides a clearly written, manageable introduction to pandemic influenza and personal preparedness for parents. The guide contains useful materials to help parents learn about the basics of pandemic flu. A helpful checklist of influenza symptoms aids parents in distinguishing between flu and colds. The guide also introduces and defines basic concepts such as isolation, quarantine, and respiratory hygiene. The materials offer concrete steps for how parents can prepare their family for a pandemic, plan for school closure, and stockpile items for children.

### **Pandemic Influenza Guide**

The [Privacy and Pandemic Flu Guide](#), released by the Association of State and Territorial Health Officers (ASTHO), is designed to aid public health professionals when privacy concerns are raised about activities related to pandemic flu planning and response. The guide describes four steps that will walk a public health professional through an analysis of the activities. The guide was developed as a result of a May 2007 discussion among a small group of experts in privacy and preparedness. This guide is intended to be a dynamic document, and it is hoped that feedback from the field on its utility will inform future iterations.



### **Business Preparedness for Pandemic Influenza**

This [four-disc DVD](#) set provides video recordings of key presentations and panel discussions from the Center for Disease and Research Policy's Business Preparedness for Pandemic Influenza: Second National Summit. Representatives from nearly 200 companies gathered on February 5-6, 2007, to hear from experts about pandemic influenza and how to prepare businesses for this inevitability. Specific information on the DVDs includes: discover risk-communication techniques to help combat "pandemic fatigue"; gain access to the scientific and business facts necessary to gain "buy in" with internal and external constituents; benchmark your organization's pandemic preparedness to discover how your budget allocations and major decisions stack up against others'. The cost for the DVD set is \$495 and can be purchased online.

### **Preparing for Pandemic Flu Handbook**

This [handbook](#) from the Arlington County Public Health Division provides concise public education on individual preparedness and response to an influenza pandemic. The book discusses the differences between seasonal and pandemic influenza. It includes a helpful chart for differentiating cold and flu symptoms. Other chapters focus on good health and hygiene practices; social distancing, masks, and respirators; self-care; and detailed criteria for when to take an adult or a child to the emergency room. The handbook uses clear and simple language.

### **Constraints on Using Antivirals and Vaccines to Forestall a Pandemic**

The Government Accountability Office (GAO) was asked to examine (1) constraints upon the use of antivirals and vaccines to forestall a pandemic and (2) efforts under way to overcome these constraints. GAO reviewed documents and consulted with officials of the Departments of State and Health and Human Services (HHS), international organizations, and pharmaceutical manufacturers. WHO commented that [the report](#) was comprehensive and useful. HHS stressed that vaccines and antivirals must be viewed in a larger context.

## Regional News

### Alternate Care Center Caches

For the past few years, the Region 7 Bio-defense Network partners have worked on a project that is critical to our Modular Emergency Medical System (MEMS) and overall medical surge capabilities, namely the development of mobile caches of equipment and supplies. The Region 7 Medical Bio-defense and Region 7 Homeland Security planning boards recently purchased and delivered three 8' x 24' trailers, stocked wall-to-wall with materiel, to Region 7. Each of these trailers contains a wide variety of items to enable provision of acute care services for a minimum of 150 patient days. Medical capabilities supported by these contents were designed to meet anticipated patient needs under a variety of incident types, using an all-hazards approach. These trailers are being readied for transport to their home locations around the region, where area personnel will receive on-site orientation to learn about these new regional resources.

### Full-scale Chemical Terrorism Exercise

Planning for CHEMTERR-08, a Region 7 multi-site, full-scale exercise, is underway. Regional partners participating in the exercise design team include representatives from local airport, hazardous materials, hospital, Emergency Medical Services, law enforcement, emergency management, public health and other entities. We additionally anticipate participation from several state and federal entities, including the CHEMPACK Communications Agency, key MDCH-OPHP personnel, Regional Response Team, 51st Civil Support Team, Transportation Security Administration, Federal Bureau of Investigation and others. The exercise will test four objectives identified by the region, focusing on (1) area & unified command, (2) CHEMPACK deployment, (3) victim & responder tracking, and (4) on-scene & hospital-based decontamination. Additional objectives will be identified and tested by local players in the three communities where this exercise will be conducted, with the scenario involving a coordinated chemical terrorist attack on these communities' airports. Beyond this, local agencies will be welcome to play along functionally – using tools such as telephone, E-Team, Michigan Public Safety Communications Systems, EMResource, etc. – to test capabilities such as multi-agency coordination and communications. CHEMTERR-08 is planned for mid-June 2008.

## Other News

### High-risk Farm Chemicals

The Department of Homeland Security (DHS) is working to make the screening process regarding [chemical security](#) regulations more appropriate for farmers. The U.S. Department of Agriculture, the Extension Disaster Education Network (EDEN) and farm organizations will work with the department to help develop a system more appropriate for agriculture.

### Drinking Water and Blue-green Algal Toxins

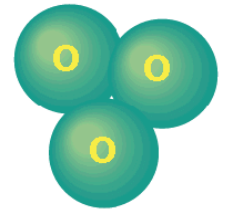
The U.S. Environmental Protection Agency awarded nearly \$700,000 to the University of Cincinnati to establish a baseline understanding of how toxins produced by cyanobacteria (blue-green algae) can be changed by exposure to ultraviolet (UV) light, a process used to disinfect drinking water. The [research](#) will be critical to developing cost-efficient UV technologies to treat water contaminated by such toxins. Research is also investigating treatment of



algae-contaminated water specifically using sunlight and an environmentally friendly catalyst. Some of the cyanobacterial toxins have even been included in the list of chemical or biological warfare agents.

### Alternative Methods of Water Disinfection

There is nothing wrong with suggesting states consider use of ozone as a means of water disinfection, as it might be safer. Most systems still need some chlorine to disinfect residuals in drinking water, however. The concept of safer chemical substitution, used so much in worker health and safety training, is not the top priority for potable water professionals. It is prudent for any community to consider all their options.



### Global Risk Network Report

The Global Risk Network focused on four emerging issues that may fundamentally shape not only the year ahead, but also the decades to come. These issues – systemic financial risk, food security, supply chains and the role of energy – are all central to the functioning of the world economy and to the well-being of global society. The risks associated with them cannot be eliminated, but they can be better understood and better managed.

## Training & Education

| Date/Time                       | Event  | Location  |
|---------------------------------|--|---|
| Feb. 14, 2008<br>10-11:15am     | <b>Dealing with Animals in Emergencies</b><br>This <u>program</u> will highlight the importance of developing local preparedness initiatives to manage animal emergencies. The speaker will describe the human resources potentially involved in animal emergency preparedness and response activities, and the benefits to their integration into the local emergency management system.  | OPHP *<br>Large Training Room<br>(517) 335-8150 |
| Feb. 27, 2008<br>2-3pm          | <b>Virtual Terrorism Response Academy</b><br>The Interactive Media Laboratory (IML), part of the Department of Community and Family Medicine at Dartmouth Medical School, provides more than 16 hours of training through the Virtual Terrorism Response Academy. Live Response explores this videogame-based interactive training <u>program</u> examining how it prepares first responders for chemical, biological, radiological, nuclear, and explosive emergencies. | OPHP *<br>Large Training Room<br>(517) 335-8150 |
| Feb. 28-29 or<br>Mar. 5-6, 2008 | <b>Basic PIOs' Workshop</b><br>This is a two-day <u>workshop</u> for entry-level or less experienced disaster Public Information Officers (PIOs) and staff, emphasizing the skills needed to manage crisis information in emergency and disaster events. Topics include responsibilities of a Public Information Officer in disasters, effective media interviews, crisis information planning, and Joint Information Center (JIC) management.                           | Gaylord<br>Lansing                              |

| Date/Time                    | Event  | Location  |
|------------------------------|--|---|
| Mar. 3-4, 2008               | <p><b>National Hospital Emergency Preparedness Conference</b></p> <p>The <a href="#">conference</a> will provide information on the new Joint Commission standards, the new NIOSH requirements, how the federal funding stream works, the role of the corporate office in the midst of a crisis, and how to handle staff behavioral health support. CME, ANCC Contact hours and ACEH credits are offered. For more information, call Ms. Lisa Rizzolo at (202) 877-7453.</p>   | Washington, DC  |
| Mar. 4-6, 2008               | <p><b>Agriculture and Food Vulnerability Assessment</b></p> <p>To assist communities and industry to prevent and deter terrorist acts that target the agriculture and food sectors. Participants will learn how to assess community-wide vulnerabilities for agricultural and food facilities; how to assess vulnerabilities within agricultural and food systems and facilities; and how to identify and implement mitigation measures to reduce vulnerabilities. See the <a href="#">informational handouts</a> for more information. If you would like to attend this course, send the information requested on the registration form by email to johnsonmw@michigan.gov.</p> | Emergency Management and Homeland Security Training Center<br>7426 Osborn Rd.<br>Lansing, MI 48913  |
| Mar. 5, 2008<br>8:30am-4pm   | <p><b>Health Literacy</b></p> <p>The "Plain Language" training will feature Janet Ohene-Frempong who is a specialist in developing clear, effective cross-cultural consumer communications. Their focus is on nutrition but health literacy principles will be covered. <a href="#">Reservation information</a> will be located online. The registration fee is \$35.</p>  | Michigan State Univ.<br>Kellogg Center<br>Big Ten Room<br>East Lansing, MI 48824  |
| Mar. 10-Apr. 25, 2008        | <p><b>Beyond Numbers: Qualitative Research Methods, Application, and Analysis</b></p> <p>Health behavior models, methods of qualitative research, analysis of qualitative data, and application of participatory research methods are examined. Participants will gain knowledge and skills to conduct better interviews with clients, make effective use of responses to open-ended survey questions, and develop and conduct a qualitative research plan. For more information, see the <a href="#">Michigan Public Health Training Center website</a>.</p>  | School of Public Health<br>University of Michigan<br>109 S. Observatory,<br>Rm. 2675<br>Ann Arbor, MI 48109<br>T: 734-615-9439<br>F: 734-763-7976<br>E: mphtc@umich.edu |
| Mar. 11-14, 2008<br>8:30-5pm | <p><b>Emergency Services Media Relations Seminar</b></p> <p>This intensive, <a href="#">four-day seminar</a> has been developed especially for senior leaders, PIOs and others with media and public relations responsibilities in law enforcement, fire, medical, health, schools and other emergency services, hospitals, government and private organizations with crisis communication needs. This course is especially designed to train you how to work and partner with those in other fields during a crisis. Fee is \$525.</p>  | Virginia Beach Resort<br>Virginia Beach, VA   |
| Mar. 17-May 2, 2008          | <p><b>Conducting Useful Program Evaluations</b></p> <p>Program evaluations influence policy and program development. Content modules will describe several different evaluation models. Emphasis in the course will be placed on introducing the tools and on building the skills helpful in using these tools in real-world program evaluations. For more information, see the <a href="#">Michigan Public Health Training Center website</a>.</p>  | School of Public Health<br>University of Michigan<br>109 S. Observatory,<br>Rm. 2675<br>Ann Arbor, MI 48109<br>T: 734-615-9439<br>F: 734-763-7976<br>E: mphtc@umich.edu |

| Date/Time                            | Event   | Location   |
|--------------------------------------|---|--|
| Mar. 19, 2008                        | <p><b>Tools for Investigating Outbreaks</b><br/> This computer-based workshop focuses on Epi Info™, a powerful tool used to investigate disease outbreaks. The workshop stresses the utility of this essential tool and provides guided practice for participants. During this hands-on session, participants will be asked to apply their knowledge of Epi Info to a public health outbreak scenario. For more information, see the <a href="#">University of Michigan's School of Public Health website</a>.</p>  | <p><a href="#">MSU Henry Center</a><br/> 3535 Forest Road<br/> Lansing, MI 48910</p>   |
| Apr. 8-9, 2008                       | <p><b><u>Building the Future of Public Health: re-focus, redesign, reenergize</u></b><br/> Participants will have opportunities to discuss the changing dynamics of public health as well as issues that are essential to the future of public health, including health equity, social justice, racial disparities, emergency preparedness, mental health impacts, and women's roles as health leaders. With this, we aim to strengthen public health efforts and improve the public's health in Genesee County and beyond! Speakers include Peter Ajluni, Kevin Stephens, and Julie Gerberding.</p>  | <p><a href="#">Flint Cultural Center</a><br/> 1198 Longway Blvd.<br/> Flint, MI 48503<br/> T: (810) 237-7333</p>   |
| Apr. 14-May 30, 2008                 | <p><b>Budgeting and Accounting</b><br/> The development and use of budgets as planning and management tools for organizations comprise the course content. Participants will develop an understanding of the financial constraints that must be managed by an organization, in terms of costs and revenues. Modules cover how to use various measures of cost in making, planning, and operating decisions for their organizations. For more information, see the Michigan Public Health Training Center website.</p>   | <p>School of Public Health<br/> University of Michigan<br/> 109 S. Observatory,<br/> Rm. 2675<br/> Ann Arbor, MI 48109<br/> T: 734-615-9439<br/> F: 734-763-7976<br/> E: mphtc@umich.edu</p> |
| Apr. 15-16, 2008<br>Jun. 17-18, 2008 | <p><b>PREPARE Train-the-Trainer</b><br/> Prepare the long-term care workforce with knowledge and competencies to deal with natural disasters and other public health emergencies. Readiness, recognition, and multidisciplinary response to disasters and emergencies. Educate core trainers. Produce an effective long-term care workforce able to treat older adults in such emergencies. Alert the public health system of emergencies. Resources for continuing disaster preparedness education. Evaluating the program's impact. There is no charge for attending this program. See the <a href="#">informational flyer</a> for details. <a href="#">Register now</a> as seating is limited.</p> | <p>Gaylord<br/> Lansing</p>  |
| Apr. 22-24, 2008                     | <p><b>Great Lakes Homeland Security Conference</b><br/> Save the Date! More details will follow.</p>  | <p><a href="#">DeVos Center</a><br/> 303 Monroe Ave. NW<br/> Grand Rapids, MI 49503<br/> T: (616) 742-6500</p>   |
| Apr. 30-May 2, 2008                  | <p><b>COOP Train-the Trainer</b><br/> This course provides emergency planners and other interested parties with the knowledge and skills to develop Continuity of Operations (COOP) plans and then be able to offer training to other emergency planners and state, local, and tribal personnel in their jurisdiction. Look for the COOP link on the <a href="#">MI-TRAIN homepage</a> for more information.</p>  | <p>OPHP<br/> Joint Activity Room<br/> Lansing, MI</p>  |

| Date/Time            | Event  | Location  |
|----------------------|--|---|
| May 5-6, 2008        | <p><b>Emergency Planning</b></p> <p>This two-day <a href="#">course</a> examines emergency and disaster planning principles and Michigan initiatives for new emergency management professionals. Planning concepts include preparedness, mitigation planning, hazard analysis, hazardous material planning, and new federal initiatives. This course is strongly recommended for all entry-level emergency managers.</p>   | Lansing   |
| May 19-22, 2008      | <p><b>Effective Managing Transit Emergencies</b></p> <p>This <a href="#">course</a> will provide information on understanding the importance, purpose, development, and implementation of emergency management and how it relates to the other safety functions of a transit system. Participants will learn how to better understand the emergency management concept and the role of the transit system in responding to emergency/disaster situations in both the community and transit system. Materials fee is \$55.</p>  | Grand Rapids, MI  |
| May 22, 2008         | <p><b>Developing Volunteer Resources</b></p> <p>This one-day <a href="#">course</a> is designed to cover a broad range of issues in disaster volunteerism expanding on the concepts presented in the prerequisite Independent Study. Topics will include spontaneous volunteerism in disasters, liability issues, marketing, recruitment, and recognition of volunteers.</p>   | Lansing   |
| May 27-Jul. 14, 2008 | <p><b>Demystifying Data: Accessing, Interpreting, and Using Health Data</b></p> <p>This online, mentored course focuses on the effective and systematic use of data in an evidence-based approach to decision making. Participants will be able to use data to develop a brief statement of the problem, describe the issue quantitatively, and develop data-based program or policy options. The course is designed for those who need to use data in their daily work but may not have considerable training in the use of data. For more information, see the <a href="#">Michigan Public Health Training Center website</a>.</p> | <p>School of Public Health<br/>University of Michigan<br/>109 S. Observatory,<br/>Rm. 2675<br/>Ann Arbor, MI 48109<br/>T: 734-615-9439<br/>F: 734-763-7976<br/>E: mphtc@umich.edu</p> |
| Jun. 11-14, 2008     | <p><b>HIV Prevention Leadership Summit</b></p> <p>This year's <a href="#">Summit</a> will again include institutes, workshops, roundtables and other sessions geared to planning groups, health departments and community-based organizations providing HIV, viral hepatitis, STD and TB prevention services, Centers for Disease Control and Prevention (CDC) capacity building assistance providers, and other federal and national partner agencies involved in HIV, viral hepatitis, STD and TB prevention.</p>  | <p><a href="#">Renaissance Center</a><br/>Detroit, MI 48243<br/>T: (313) 568-8000</p>   |
| Jun. 12, 2008        | <p><b>Behavioral Mental Health Conference</b></p> <p>This annual forum promotes an intellectual exchange among Michigan's behavioral health professionals, local health departments and others involved in improving mental health surrounding public health preparedness, mitigation, response and recovery to emergency and disaster. Please note there is a non-refundable conference fee of \$20.00. Logon to <a href="#">MI-TRAIN</a>, search for course ID 1010420, and register today!</p>  | <p><a href="#">Lansing Conf. Center</a><br/>333 E. Michigan Ave.<br/>Lansing, MI 48933</p>  |

| Date/Time        | Event  | Location   |
|------------------|--|--|
| Jul. 6-25, 2008  | <b>Graduate Sessions in Epidemiology</b><br>Courses are for all public health professionals and anyone interested in health research. One- and three-week courses are available in a range of topics. Distance learning courses available for the Fundamentals of Biostatistics, and the Fundamentals of Epidemiology. CME credit is available.  | The Univ. of Michigan<br>School of Public Health<br>109 Observatory St.<br>Ann Arbor, MI 48109 |
| Jul. 8-10, 2008  | <b>Great Lakes Border Health Initiative Conference</b><br>Save the Date! For more information, view the <a href="#">announcement flyer</a> .   | Ann Arbor, MI  |
| Jul. 23-24, 2008 | <b>Emergency Planning for Special Needs Populations</b><br>This two-day <u>course</u> covers the unique concerns for organizations responsible for the care of "special needs" groups in disasters. This course will expand on the concepts covered in the prerequisite Independent Study 197 by discussing definition of "special needs populations" and highlighting the planning elements of mass care, sheltering, and evacuation. | Lansing  |



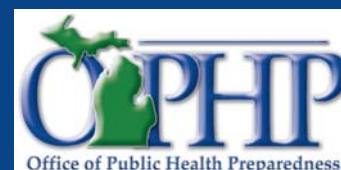
Photo by Robert Sawtelle



Photo by Aaron McKee



Mailing Address:  
Office of Public Health Preparedness  
Capitol View Building - 201 Townsend Street - Lansing, MI 48913  
(517) 335-8150 — <http://www.michigan.gov/ophp>



This publication is supported by Cooperative Agreement Number U90/CCU517018-08 from the Centers for Disease Control and Prevention (CDC). Its contents are solely the responsibility of the authors and do not necessarily represent the official views of CDC.