

Preparedness and Planning

Podcasts from the MDCH Director

In order to further communicate our health message to you, the Michigan Department of Community Health (MDCH) has added podcasts as a new feature on [their website](#). All podcasts will feature tips and information on various topics such as the benefits of maintaining a healthy heart, visiting a doctor and dentist routinely, eating the right foods and exercising. Podcasts will be updated regularly to accompany various events and news related to health issues in Michigan. Please enjoy this new tool as you take charge of your health. To hear a seasonal flu message, scroll down to the podcast entitled "MDCH Encourages Residents to Get Your Flu Shot".

Health Equity Campaign

Shortly after Hurricane Katrina, it was apparent that existing evacuation plans did not adequately plan for the number of poor and sick individuals. The poor had spent their lives being battered by hundreds of mini-Katrinass in the shape of social and institutional abuse, deprivation and neglect. These factors take a cumulative toll on the body over the years. [Unnatural Causes](#) is a four-hour limited series that will for the first time on television sound the alarm about our huge and disturbing socio-economic and racial/ethnic disparities in health--and search for their causes. [A preview](#) of the documentary series can be viewed online. The full documentary will air on PBS on March 27-April 17, 2008.



Heredity Seen as a Factor in Death from Flu

Using the comprehensive Utah database, researchers estimated the relative risks of [death due to influenza](#) for the relatives of 4,855 individuals who died of influenza in the past 100 years. They found people may inherit a genetic predisposition to dying from influenza virus infection. All "first-degree" relatives (parents, sisters, brothers) of individuals who died of influenza had a 54 percent higher risk of dying from influenza. The risk was 74 percent higher in siblings, 37 percent higher in parents, and 59 percent higher in children. The risk of death from influenza in second-degree relatives of individuals who died of influenza was 22 percent and in more distant third-degree relatives it was 16 percent higher.

SARS and International Legal Preparedness

The disease known now as severe acute respiratory syndrome (SARS) first emerged in November 2002 in China's Guangdong Province and has since been described as the first severe, readily transmissible new disease of the twenty-first century. [This paper](#) discusses examples of how

News

Flu Vaccine Mismatch

This year's flu epidemic is more severe than those of the last two years. This year's isolates are not included in this year's vaccine yielding little protection for many. See [page 2](#) for more information.

Michigan Public Health Week and Our Hometown Health Heroes

Michigan will celebrate Public Health Week April 14-18, 2008. You can nominate individuals, organizations, groups, or coalitions from Michigan that are doing great work in this year's theme areas. See [page 4](#) for a list of the themes and how to nominate.

Rogue Satellite Shot Down

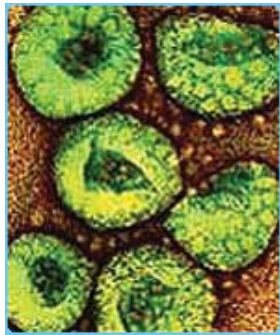
On February 20, the U.S. Department of Defense shot down a malfunctioning satellite that contained toxic rocket fuel. See [page 4](#) for more information.

Table of Contents...

Preparedness and Planning	1
Surveillance	2
Pandemic Planning	2
Regional News	3
Other News	4
Training & Education	5

Read the Next *Guardian* Issue:
March 14, 2008

regions faced with SARS turned to disease control strategies based on public health law, such as “personal control measures” like quarantine and isolation; weaknesses in the ability of nations’ legal systems to frame balanced, coordinated and well-executed public health programs for rapid disease contain-



ment; and the responses of diverse populations to restrictive personal control measures. The paper uses the experiences of governmental entities of Singapore, the Hong Kong Special Administrative Region, Canada, and the United States to illustrate important public health law and preparedness challenges for infectious disease control. While the experiences of these nations may not perfectly apply in other nations, they represent a spectrum of political and legal cultures. The paper concludes with recommendations encouraging enhanced legal preparations for public health emergencies.

Surveillance

Influenza Vaccine Mismatch

As the seasonal flu epidemic gets into full swing across the U.S., the Centers for Disease Control and Prevention (CDC) is reporting that this year’s flu epidemic is more severe than those of the last two years. Antigenic typing of flu isolates shows that, like last year, A/H1N1 is the predominant strain nationally. However, both A/H3N2 and Influenza B are increasing in frequency and are now predominant in some regions. This is significant because 87% of this year’s H3N2 isolates are the Brisbane strain, which was not included in this year’s vaccine, and 93% of the influenza B isolates belong to the Yamagata lineage, also not included in this year’s vaccine. This means that the vaccine does not match 43% of flu isolates in this country.

Pandemic Planning

USDA Pandemic Influenza Strategy Report

As outlined in the *National Strategy for Pandemic Influenza* in May 2006, the U.S. Department of Agriculture (USDA) was assigned ninety-eight tasks to complete. Each task was given a measure of performance that was to be completed by a specific date. The measures of performance required USDA to implement and/or revise procedures and coordinate with other federal agencies to prepare for a possible pandemic. The USDA’s Office of Inspector General evaluated whether USDA had adequately implemented the actions outlined in the national plan and released the USDA’s *Implementation of the National Strategy for Pandemic Influenza*.

Historical 1918 Influenza Pandemic Website

An influenza pandemic occurred in three waves in the United States throughout 1918 and 1919. Visit this [new website](#) from the U.S. Department of Health and Human Services to learn more about the pandemic, along with the nation’s health and the medical care system and how they were affected. Also, take a glance at some people who fought influenza in the United States.

New Pandemic Preparedness Website

A flu pandemic has the potential to cause massive disruption of essential services throughout the world because many people may not report for work.

Preparation could be the difference between a family that copes versus a family struggling for survival. [This website](#) has been created to provide everyday people with straight-forward information and easy-to-follow advice for how to prepare and protect you and your family in the event of a wide-spread influenza outbreak.

Financial Institutions' Pandemic Exercise Report

Beginning September 24, 2007, more than 2,700 U.S. financial services organizations participated in a three-week exercise simulating a severe global pandemic flu. This report details the results from this exercise including how the exercise was constructed by the financial services sector through a public/private partnership, the findings from the exercise, and future considerations for the sector and the regulators. Based on the [exercise results](#), it is apparent that financial organizations of different sizes have different needs and responses to the challenges posed by a potential pandemic flu epidemic.

Wisconsin's Public Pandemic Materials

The Wisconsin Public Health Association and the Wisconsin Division of Public Health are pleased to provide the [Wisconsin Pandemic Toolkit](#). The toolkit was developed to assist in preparing for a potential pandemic influenza crisis and contains information such as fact sheets, frequently asked questions, and promotional materials. The Wisconsin toolkit is also available in Spanish and Hmong.

Regional News

- The Regional Planning Board has recognized for some time that the name Bioterrorism Defense Network Region 3 (BTDN Region 3) has not accurately reflected the broad scope of the preparedness activities undertaken by the hospitals, medical control authorities and other partners in our 14 counties. Therefore, after some considerable discussion, the Board formally adopted a new name: Region 3 Healthcare Preparedness Network (Region 3 HPN). The Region is now working to develop a new logo.
- Patient Electronic Tracking Systems are meant to allow for accurate triage and tracking of patients during an emergency. Region 3's Technology and Communications workgroup of the Regional Advisory Committee and our Board have approved a new plan to allow the patient tracking assets to more quickly come into play at a mass casualty or disaster scene. Soon, a patient scanner will be placed in an EMS supervisor vehicle (or other appropriate vehicle) in each of Region 3's eleven Medical Control Authorities (MCA's). The new deployment plan will also involve a revised training design for EMS and other key players.
- Region 3 has had difficulty offering training opportunities due to their vast geographic size. To address this challenge, they have hired Comprehensive Emergency Management Associates of Lansing to help develop web-based training programs. The initial four programs include an orientation to the region and the Medical Coordination Center, an orientation to the Acute Care Center (ACC) and MCI trailers and their deployment procedures, Radio Communications techniques, and the MEDTRAX/EMTRACK patient tracking system. At the end of the grant year, Region 3 will have at least four up to date and usable training opportunities for our hospital, EMS and other colleagues.

Region 3

Other News

Michigan Celebrates Public Health Week and Our Hometown Health Heroes

Michigan will celebrate Public Health Week April 14-18, 2008. The theme for Public Health Week in 2008 is "Climate Change: Our Health in Balance." Each day of the week has a theme:

- April 14 – Celebrating Public Health Week
- April 15 – Preparedness & Extreme Weather Conditions
- April 16 – Air Pollution & Respiratory Health
- April 17 – Water- & Vector-Borne Diseases
- April 18 – Food & Water Supply
- April 21 – Mental Health

You can nominate individuals, organizations, groups, or coalitions from Michigan that are doing great work in these areas. The nomination form for these Hometown Health Heroes is available on the Michigan Department of Community Health [website](#), and nominations are due by March 7, 2008. MDCH Director Janet Olszewski will recognize the Hometown Health Heroes at a special ceremony on April 22. For further information, contact Mr. Jim Koval at (517) 335-9732 or email at kovalj@michigan.gov.

Rogue Satellite Caused Concern

On February 20, the U.S. Department of Defense [successfully destroyed](#) a non-functioning satellite that was expected to fall to Earth in the next few weeks. The 5,000-pound satellite malfunctioned soon after it was launched in 2006, making it unresponsive to ground control. It was carrying a tank full of [hydrazine](#), a toxic rocket fuel that could have potentially survived the return from orbit and impacted populated areas.



Refrigerated, Frozen, and Cupboard Storage Charts

This is a list from Kansas State University Research and Extension that shows the shelf life of different kinds of food. These lists include, freezer, shelf, and refrigerator storage. This list will aid in keeping the food we have for emergencies fresh for as long as possible. [The lists](#) are available online.

Hesperian Foundation Online Library

The Hesperian Foundation is dedicated to helping those in less privileged countries with the medical care they need. They have written several books on how to survive if medical care is not available. [These books](#) are in both English and Spanish and available online.



NIMBY – Not In My Back Yard

NIMBY is an acronym describing opposition to something newly proposed for the neighborhood of the opponent. Peter Sandman, a risk communication consultant, writes on the subject of necessary infrastructure that no one wants to accept into their living areas, but agree the items are needed. [The article](#) can be accessed online.

Training & Education

IS-800 National Response Framework Introduction

The Federal Emergency Management Agency is offering independent study

course [IS-800.B](#), an Introduction to the *National Response Framework*. At the end of the course, participants will be able to describe: the purpose of and response doctrine established by the *National Response Framework*, the roles and responsibilities of entities, the actions that support national response, the response organizations used for multiagency coordination, and how planning relates to national preparedness.

Date/Time	Event	Location
Online	<p>Crisis & Emergency Risk Communication (CERC) This course will stress the fundamentals of the Centers for Disease Control and Prevention's CERC instructor-led course. The course has been designed to serve those who will perform crisis and risk communication and media relations in the event of a public health emergency. This course is divided into five modules and should take approximately two hours to complete.</p>	Online
Feb. 26, 2008 1-2pm	<p>Community Preparedness This presentation will enhance clinicians' knowledge of emerging or re-emerging threats, their effects on human populations and medical evaluation and management of these threats. Please visit the Centers for Disease Control and Prevention website for call-in information, objectives and Continuing Education Credit information. The PowerPoint presentation will be posted by Feb. 25.</p>	Conference Call
Feb. 27, 2008 8am-1:30pm	<p>Basic Disaster Life Support This course is designed to develop commonality of approach and language and to improve the care and coordination of response in disaster and public health emergencies. The curriculum includes an overview of the D-I-S-A-S-T-E-R paradigm, injuries and responses associated with different types of disasters, an overview of the public health system, and the psychosocial aspects of disasters. Please refer to the informational flyer and registration form for more information. This course is free to Region 2 South members and neighboring emergency preparedness partners.</p>	RESA Annex Auditorium 5454 Venoy Road Wayne, MI 48184
Feb. 27, 2008 2-3pm	<p>Virtual Terrorism Response Academy The Interactive Media Laboratory (IML), part of the Department of Community and Family Medicine at Dartmouth Medical School, provides more than 16 hours of training through the Virtual Terrorism Response Academy. Live Response explores this videogame-based interactive training program examining how it prepares first responders for chemical, biological, radiological, nuclear, and explosive emergencies.</p>	OPHP * Large Training Room (517) 335-8150
Feb. 28-29 or Mar. 5-6, 2008	<p>Basic PIOs' Workshop This is a two-day workshop for entry-level or less experienced disaster Public Information Officers (PIOs) and staff, emphasizing the skills needed to manage crisis information in emergency and disaster events. Topics include responsibilities of a Public Information Officer in disasters, effective media interviews, crisis information planning, and Joint Information Center (JIC) management.</p>	Gaylord Lansing

Date/Time	Event	Location
Mar. 3-4, 2008	<p>National Hospital Emergency Preparedness Conference</p> <p>The conference will provide information on the new Joint Commission standards, the new NIOSH requirements, how the federal funding stream works, the role of the corporate office in the midst of a crisis, and how to handle staff behavioral health support. CME, ANCC Contact hours and ACEH credits are offered. For more information, call Ms. Lisa Rizzolo at (202) 877-7453.</p>	Washington, DC
Mar. 4-6, 2008	<p>Agriculture and Food Vulnerability Assessment</p> <p>To assist communities and industry to prevent and deter terrorist acts that target the agriculture and food sectors. Participants will learn how to assess community-wide vulnerabilities for agricultural and food facilities; how to assess vulnerabilities within agricultural and food systems and facilities; and how to identify and implement mitigation measures to reduce vulnerabilities. See the informational handouts for more information. If you would like to attend this course, send the information requested on the registration form by email to johnsonmw@michigan.gov.</p>	Emergency Management and Homeland Security Training Center 7426 Osborn Rd. Lansing, MI 48913
Mar. 5, 2008 8:30am-4pm	<p>Health Literacy</p> <p>The "Plain Language" training will feature Janet Ohene-Frempong who is a specialist in developing clear, effective cross-cultural consumer communications. Their focus is on nutrition but health literacy principles will be covered. Reservation information will be located online. The registration fee is \$35.</p>	Michigan State Univ. Kellogg Center Big Ten Room East Lansing, MI 48824
Mar. 10-Apr. 25, 2008	<p>Beyond Numbers: Qualitative Research Methods, Application, and Analysis</p> <p>Health behavior models, methods of qualitative research, analysis of qualitative data, and application of participatory research methods are examined. Participants will gain knowledge and skills to conduct better interviews with clients, make effective use of responses to open-ended survey questions, and develop and conduct a qualitative research plan. For more information, see the Michigan Public Health Training Center website.</p>	School of Public Health University of Michigan 109 S. Observatory, Rm. 2675 Ann Arbor, MI 48109 T: 734-615-9439 F: 734-763-7976 E: mphtc@umich.edu
Mar. 11-14, 2008 8:30-5pm	<p>Emergency Services Media Relations Seminar</p> <p>This intensive, four-day seminar has been developed especially for senior leaders, PIOs and others with media and public relations responsibilities in law enforcement, fire, medical, health, schools and other emergency services, hospitals, government and private organizations with crisis communication needs. This course is especially designed to train you how to work and partner with those in other fields during a crisis. Fee is \$525.</p>	Virginia Beach Resort Virginia Beach, VA
Mar. 17-May 2, 2008	<p>Conducting Useful Program Evaluations</p> <p>Program evaluations influence policy and program development. Content modules will describe several different evaluation models. Emphasis in the course will be placed on introducing the tools and on building the skills helpful in using these tools in real-world program evaluations. For more information, see the Michigan Public Health Training Center website.</p>	School of Public Health University of Michigan 109 S. Observatory, Rm. 2675 Ann Arbor, MI 48109 T: 734-615-9439 F: 734-763-7976 E: mphtc@umich.edu

Date/Time	Event	Location
Mar. 19, 2008	<p>Tools for Investigating Outbreaks This computer-based workshop focuses on Epi Info™, a powerful tool used to investigate disease outbreaks. The workshop stresses the utility of this essential tool and provides guided practice for participants. During this hands-on session, participants will be asked to apply their knowledge of Epi Info to a public health outbreak scenario. For more information, see the University of Michigan's School of Public Health website.</p>	<p>MSU Henry Center 3535 Forest Road Lansing, MI 48910</p>
Mar. 26, 2008 11:30-1pm	<p>Public Health Grand Rounds: Public Health in China Presenters open the session by framing the topic from research and practice perspectives. These talks are followed by a facilitated discussion with presenters and audience. Participants can join live or by webcast. For more information, please see the University of Michigan's School of Public Health website.</p>	<p>University of Michigan School of Public Health Crossroads Building Room 1690 Ann Arbor, MI 48109 T: 734-615-9439 F: 734-763-7976 E: mphtc@umich.edu</p>
Apr. 2-4, 2008	<p>American Association on Intellectual and Developmental Disabilities Conference Sessions include alternatives to pain management and well-being, building a new image of individuals labeled as 'disabled', building and maintaining support, social security disability programs, Medicaid basics, and many others. Please see the conference brochure for full details.</p>	<p>Valley Plaza Resorts 5221 Bay City Road Midland, MI 48642 T: (989) 496-2700</p>
Apr. 8-9, 2008	<p><u>Building the Future of Public Health: re-focus, redesign, reenergize</u> Participants will have opportunities to discuss the changing dynamics of public health as well as issues that are essential to the future of public health, including health equity, social justice, racial disparities, emergency preparedness, mental health impacts, and women's roles as health leaders. With this, we aim to strengthen public health efforts and improve the public's health in Genesee County and beyond! Speakers include Peter Ajluni, Kevin Stephens, and Julie Gerberding.</p>	<p>Flint Cultural Center 1198 Longway Blvd. Flint, MI 48503 T: (810) 237-7333</p>
Apr. 14-May 30, 2008	<p>Budgeting and Accounting The development and use of budgets as planning and management tools for organizations comprise the course content. Participants will develop an understanding of the financial constraints that must be managed by an organization, in terms of costs and revenues. Modules cover how to use various measures of cost in making, planning, and operating decisions for their organizations. For more information, see the Michigan Public Health Training Center website.</p>	<p>School of Public Health University of Michigan 109 S. Observatory, Room 2675 Ann Arbor, MI 48109 T: 734-615-9439 F: 734-763-7976 E: mphtc@umich.edu</p>
Apr. 15-16, 2008 Jun. 17-18, 2008	<p>PREPARE Train-the-Trainer Prepare the long-term care workforce with knowledge and competencies to deal with natural disasters and other public health emergencies. Produce an effective long-term care workforce able to treat older adults in such emergencies. Alert the public health system of emergencies. Resources for continuing disaster preparedness education. Evaluating the program's impact. There is no charge for attending this program. See the informational flyer for details. Register now as seating is limited.</p>	<p>Gaylord Lansing</p>

Date/Time	Event	Location
Apr. 22-24, 2008	Great Lakes Homeland Security Conference Save the Date! More details will follow.	DeVos Center 303 Monroe Ave. NW Grand Rapids, MI 49503 T: (616) 742-6500
Apr. 30-May 2, 2008	COOP Train-the Trainer This course provides emergency planners and other interested parties with the knowledge and skills to develop Continuity of Operations (COOP) plans and then be able to offer training to other emergency planners and state, local, and tribal personnel in their jurisdiction. Look for the COOP link on the MI-TRAIN homepage for more information.	OPHP Joint Activity Room Lansing, MI
May 5-6, 2008	Emergency Planning This two-day course examines emergency and disaster planning principles and Michigan initiatives for new emergency management professionals. Planning concepts include preparedness, mitigation planning, hazard analysis, hazardous material planning, and new federal initiatives. This course is strongly recommended for all entry-level emergency managers.	Lansing
May 19-22, 2008	Effective Managing Transit Emergencies This course will provide information on understanding the importance, purpose, development, and implementation of emergency management and how it relates to the other safety functions of a transit system. Participants will learn how to better understand the emergency management concept and the role of the transit system in responding to emergency/disaster situations in both the community and transit system. Materials fee is \$55.	Grand Rapids, MI
May 22, 2008	Developing Volunteer Resources This one-day course is designed to cover a broad range of issues in disaster volunteerism expanding on the concepts presented in the prerequisite Independent Study. Topics will include spontaneous volunteerism in disasters, liability issues, marketing, recruitment, and recognition of volunteers.	Lansing
May 27-Jul. 14, 2008	Demystifying Data: Accessing, Interpreting, and Using Health Data This course focuses on the effective and systematic use of data in an evidence-based approach to decision making. Participants will be able to use data to develop a brief statement of the problem, describe the issue quantitatively, and develop data-based program or policy options. The course is designed for those who need to use data in their daily work but may not have considerable training in the use of data. For more information, see the Michigan Public Health Training Center website .	School of Public Health University of Michigan 109 S. Observatory, Rm. 2675 Ann Arbor, MI 48109 T: 734-615-9439 F: 734-763-7976 E: mphtc@umich.edu
Jun. 11-14, 2008	HIV Prevention Leadership Summit This year's Summit will again include institutes, workshops, roundtables and other sessions geared to planning groups, health departments and community-based organizations providing HIV, viral hepatitis, STD and TB prevention services, Centers for Disease Control and Prevention (CDC) capacity building assistance providers, and other federal and national partner agencies involved in HIV, viral hepatitis, STD and TB prevention.	Renaissance Center Detroit, MI 48243 T: (313) 568-8000

Date/Time	Event	Location
Jun. 12, 2008	<p>Behavioral Mental Health Conference</p> <p>This annual forum promotes an intellectual exchange among Michigan's behavioral health professionals, local health departments and others involved in improving mental health surrounding public health preparedness, mitigation, response and recovery to emergency and disaster. Please note there is a non-refundable conference fee of \$20.00. Logon to MI-TRAIN, search for course ID 1010420, and register today!</p>	<p>Lansing Conf. Center 333 E. Michigan Ave. Lansing, MI 48933</p>
Jul. 6-25, 2008	<p>Graduate Sessions in Epidemiology</p> <p>Courses are for all public health professionals and anyone interested in health research. One- and three-week courses are available in a range of topics. Distance learning courses available for the Fundamentals of Biostatistics, and the Fundamentals of Epidemiology. CME credit is available.</p>	<p>The Univ. of Michigan School of Public Health 109 Observatory St. Ann Arbor, MI 48109</p>
Jul. 8-10, 2008	<p>Great Lakes Border Health Initiative Conference</p> <p>Save the Date! For more information, view the announcement flyer.</p>	<p>Ann Arbor, MI</p>
Jul. 23-24, 2008	<p>Emergency Planning for Special Needs Populations</p> <p>This two-day course covers the unique concerns for organizations responsible for the care of "special needs" groups in disasters. This course will expand on the concepts covered in the prerequisite Independent Study 197 by discussing definition of "special needs populations" and highlighting the planning elements of mass care, sheltering, and evacuation.</p>	<p>Lansing</p>



Photo by Tracey L. Warner



Photo by Kelly Drummelsmith

Mailing Address:
Office of Public Health Preparedness
Capitol View Building - 201 Townsend Street - Lansing, MI 48913
(517) 335-8150 — <http://www.michigan.gov/ophp>



This publication is supported by Cooperative Agreement Number U90/CCU517018-08 from the Centers for Disease Control and Prevention (CDC). Its contents are solely the responsibility of the authors and do not necessarily represent the official views of CDC.