

Preparedness and Planning

Midwest States Receive Less Funding from CDC

Trust for America's Health released a new study that finds Midwestern states receive less funding from the U.S. Centers for Disease Control and Prevention (CDC) than other states. Midwestern states receive an average of \$16.24 per person. This figure is compared with \$19.74 for Western states, \$23.37 for Northeastern states, and \$29.40 for Southern states. The new analysis, *Shortchanging America's Health: A State-By-State Look at How Federal Public Health Dollars Are Spent -- 2008*, reviews key health statistics and federal funding for public health on a state-by-state level.

MDCH Urges Medical Providers to Eliminate Mercury

The Michigan Department of Community Health (MDCH) is urging medical providers eliminate mercury from their buildings. MDCH has responded to two large mercury spills (more than one pound, which is about two tablespoons) in medical clinics within the last month. The spills were caused by broken blood pressure devices, and caused evacuation, clinic closures, employee medical testing, and thousands of dollars in cleanup costs. Exposure to mercury vapor can cause a range of complications including brain damage, memory loss, tremors, numbness in the fingers and toes, mood changes, and kidney damage. Mercury spilled on a hot surface, such as a stove or heater, can



quickly produce high concentrations of mercury vapor that can lead to death. For more information, contact MDCH at 1-800-648-6942 or visit the [MDCH mercury website](#).

Social Problems Perspective on Disasters

Has the emergency management profession been going the wrong direction since 9-11? [This essay](#) explores the intellectual contexts wherein disasters are defined as non-routine social problems. The argument proposes that theoretical orientation can both open new doors for researchers and assist emergency management professionals in critically reviewing existing policy and future proposals. The essay provides a social-problems perspective which analyzes insights from past disasters and their implications for the emergency management community.

State Evacuation Planning

The best emergency plan is one that is comprehensive and understandable. For the past two years, anecdotal evidence suggests that perhaps planning, especially for total building evacuations, had stalled since 9/11. [This research](#) explores the reality of key emergency planning elements

News

Coast Guard Struggling to Meet Missions

The Coast Guard is struggling to meet its homeland security missions in addition to its traditional missions, according to a new report from Homeland Security Inspector General (IG). See [page 2](#) for more details.

Hurricane Playbook

The Office of the Assistant Secretary for Preparedness and Response (ASPR) has posted its *Hurricane Playbook*, the first in a series of documents designed to outline key options and recommended actions to support the response to disasters and other large-scale emergencies. See [page 3](#) for more information.

Great Lakes Homeland Security Conference

This conference, held April 22-24, is a unique opportunity to: network with your peers, hear nationally recognized speakers, and see the latest in homeland security and emergency preparedness and response related products and services. See [page 5](#) for more details.

Table of Contents...

Preparedness and Planning	1
Surveillance	2
Pandemic Planning	3
Communications	3
Regional News	3
Training & Education	4

(specifically evacuations and alternate operational locations) in a statistically valid, targeted survey. The goal of the process was to determine if, in fact, the anecdotal evidence was a better picture of the state of evacuation planning than might be evidenced in business reports.

Coast Guard Struggling to Meet Missions

The Coast Guard is struggling to meet its homeland security missions in addition to its traditional missions, according to a [new report](#) from Homeland Security Inspector General (IG). To address the Homeland Security Act of 2002 requirements, the IG reviewed the Coast Guard resource hours used to perform the various homeland security and non-homeland security missions, as well as performance goals and results, from FY 2001 through FY 2006. The Coast Guard did not meet performance goals for three of its missions – Undocumented Migrant Interdiction, Defense Readiness, and Marine Safety.



EMAC Strategic Plan Revised

In June 2007, the United States Government Accountability Office (GAO) issued "[Enhancing EMAC's Collaborative and Administrative Capacity Should Improve National Disaster Response](#)", which identified four goals set forth in the 2006 Five-Year Strategic Plan for the Emergency Management Assistance Compact (EMAC). The GAO report identified the lack of qualified measures or targets for its many goals and objectives for activities within the strategic plan and suggested the addition of performance measures for these activities. In response to the GAO Report, the EMAC Committee revised the Strategic Plan to include performance measures for the goals as identified in the EMAC Strategic Plan: 2007 – 2012. A survey tool using these performance measures will be developed and distributed to the 52 states and territory EMAC coordinators to evaluate past EMAC response efforts to disasters.

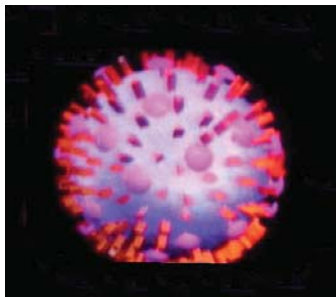
Human Factors in Business Continuity

This is the second of a series of [articles](#) by Siobhán McGee and Emerald-Jane Turner which explore human resource aspects of business continuity management. Here, the authors discuss the second phase of their human resources business continuity model: the proactive phase.

Surveillance

Improper H5N1 Surveillance

Since 2000, researchers have collected samples from and screened more than 200,000 samples from chickens, aquatic and wild birds for the H5N1 virus in China. Recombinomics, a molecular evolution research company, believes there are a host of shortfalls in the current surveillance and associated sequencing, which significantly limits current analysis. This commentary discusses how current surveillance techniques are inhibiting detection of H5N1. This [article](#) can be viewed online.



Pandemic Planning

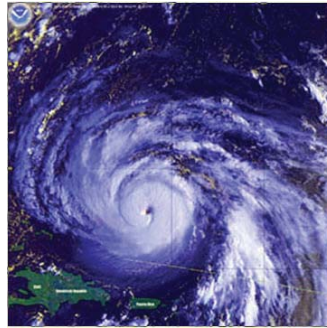
USDOT's Pandemic Flu Plans

The U.S. Department of Transportation (USDOT) has posted their pandemic plans online. The five annexes are intended to assist the Transportation Sub-Sectors, and associated public and private sector businesses plan for a severe influenza pandemic. These sector-specific guidelines are annexes to the Pandemic Influenza Preparedness, Response, and Recovery Guide for Critical Infrastructure and Key Resources developed by the Department of Homeland Security. There are [plans available](#) for aviation, maritime, highway, mass transit, and railroads.

Communications

Hurricane Playbook

The Department of Health and Human Services (HHS), Office of the Assistant Secretary for Preparedness and Response (ASPR) has posted its [Hurricane Playbook](#), the first in a series of documents designed to outline key options and recommended actions to support the response to disasters and other large-scale emergencies. The playbooks are written at a strategic level to highlight key decision points, actions, capabilities and assets that may be required to support an incident response.



New PERI Website

The Public Entity Risk Institute (PERI), a nonprofit research institute focused on risk management, recently launched a new and improved [website](#) designed to ease access to an extensive collection of risk management publications, programs and tools. Among the enhanced features of the new website is an expanded Resource Library which is organized by topic, audience, and type of resource for more user-friendly research.

Homeland1.com

This new website aims to be the most comprehensive online resource for domestic preparedness. With a full range of articles, videos, training tips and product information, [Homeland1.com](#) addresses the wide-ranging needs of emergency managers, disaster planners and counter-terrorism officials across the country. The website covers topics such as command and control, bioterrorism, disaster exercises, and funding.

Regional News

Region 2 North Sponsors Training for Laboratory Personnel

Region 2 North, in collaboration with the Oakland County Health Division (OCHD) Reference Laboratory, presented an educational conference last summer regarding emergency preparedness in the event of a chemical exposure. The program, titled "When Chemicals Go Astray: Responding to Exposure Events", was held in June 2007 at Crittenton Hospital in Rochester. Speakers included the Region 2 North Medical Director, who discussed how chemicals have been used as weapons, and a spokesperson from the Poison Control Center, who spoke about the different classes of chemicals.

Over eighty participants attended including doctors, nurses, laboratory technologists, infection control personnel and other emergency health professionals. The program covered such key aspects as:

- protecting yourself and family in the event of an exposure
- how to assist a chemically exposed person until professional help arrives
- collecting and transporting chemical event samples
- chemical preparedness, past, present and future

Lab and nursing personnel had the opportunity to obtain continuing education credits for this program. Each participant received a book titled, "Chemical Terrorism - Laboratory Preparedness Guide", which was prepared by the MDCH Bureau of Laboratories.

With the success of this program, Region 2 North and the OCHD Reference Lab are already in the planning stages for the spring 2008 conference. The subject matter for this conference will be "Bio Safety and Bio-Security". Future details, including registration information, will be posted on MI-TRAIN as the program details are finalized.

While most laboratory conferences can be very technical, these educational conferences focus on integrating laboratory staff with other emergency preparedness partners and have been extremely well-received based upon program evaluations.

Training & Education

Public Health Emergency Law and Forensic Epidemiology CD-ROM

The Public Health Law Program has released the latest version of their Public Health Emergency Law and Forensic Epidemiology training materials on CD-ROM. These self-contained training packages were developed for instructors who provide public health preparedness training to front-line practitioners. The "Public Health Emergency Law" portion of the CD is targeted at public health practitioners and emergency management professionals to improve understanding of the role of law as a public health tool. The "Forensic Epidemiology" portion of the CD is designed to help public health and law enforcement agencies strengthen coordination of responses to pandemic influenza and similar threats. To learn more about the courses or to order a free CD-ROM, visit the [CDC website](#).



Date/Time	Event Description	Location
Online	<p>Ready, Willing, & Able: Assisting People with Disabilities during Disasters</p> <p>The free, professional, two-hour, introductory, online training course is offered for independent study and for continuing education. Specific training covers disability etiquette, terminology, communications and assistance techniques during disasters for assisting people with disabilities. Course participants will become familiar with various disaster assistance needs of persons with sight, mobility, hearing, and cognitive disabilities. To access the training, first create an account at http://www.train.org/.</p>	Online

Date/Time	Event Description	Location
Apr. 14-May 30, 2008	<p>Budgeting and Accounting</p> <p>The development and use of budgets as planning and management tools for organizations comprise the course content. Participants will develop an understanding of the financial constraints that must be managed by an organization, in terms of costs and revenues. Modules cover how to use various measures of cost in making, planning, and operating decisions for their organizations. For more information, see the Michigan Public Health Training Center website.</p>	<p>School of Public Health University of Michigan 109 S. Observatory, Room 2675 Ann Arbor, MI 48109 T: 734-615-9439 F: 734-763-7976 E: mphtc@umich.edu</p>
Apr. 15-16, 2008 Jun. 17-18, 2008	<p>PREPARE Train-the-Trainer</p> <p>Prepare the long-term care workforce with knowledge and competencies to deal with natural disasters and other public health emergencies. Produce an effective long-term care workforce able to treat older adults in such emergencies. Alert the public health system of emergencies. Resources for continuing disaster preparedness education. Evaluating the program's impact. There is no charge for attending this program. See the informational flyer for details. Register now as seating is limited.</p>	<p>Gaylord Lansing</p>
Apr. 22-24, 2008	<p>Great Lakes Homeland Security Conference</p> <p>This conference is a unique opportunity to: network with your peers, hear nationally recognized speakers, and see the latest in homeland security and emergency preparedness and response related products and services. The registration fee is \$400. Lodging is not included. Please see the Michigan State Police's Emergency Management and Homeland Security (EMHSD website) for more information, including online registration.</p>	<p>DeVos Center 303 Monroe Ave. NW Grand Rapids, MI 49503 T: (616) 742-6500</p>
Apr. 23, 2008 11-12pm	<p>Personal Protective Equipment Rule</p> <p>Employers have until May 15, 2008 to comply with OSHA's new Employer Payment for Personal Protective Equipment (PPE) rule. To help clarify OSHA's PPE Standard, the National Safety Council (NSC) will host this 60-minute interactive web-based seminar that explains the guidelines OSHA published in this regulation. In addition, he will answer questions on compliance with the PPE Standard during the live Q&A session. To register, visit the NSC website or call or call NSC Customer Service at 800-621-7615.</p>	<p>Webinar</p>
Apr. 23, 2008 2-3pm	<p>Live Response: Critical Incident Protocol</p> <p>The School of Criminal Justice, located at Michigan State University, offers training that is a facilitation of partnerships between public and private sectors for joint managing of critical incidents by establishing protocols. Live Response explores how communities will work on emergency preparedness, mitigation, response, and recovery through joint planning, exercising and training.</p>	<p>OPHP Large Training Room (517) 335-8150</p>
Apr. 23, 2008 2-3pm	<p>Applying ICS to Enhance Preparedness</p> <p>This program will describe a training curriculum that they have used with regional Medical Reserve Corps (MRC) volunteers on points of distribution (POD) operations to gain fundamental knowledge and skills that enhance the capacity and quality of POD services within an ICS structure.</p>	<p>OPHP Library (517) 335-8150</p>
Apr. 30-May 2, 2008	<p>COOP Train-the Trainer</p> <p>This course provides emergency planners and other interested parties with the knowledge and skills to develop Continuity of Operations (COOP) plans and then be able to offer training to other emergency planners and state, local, and tribal personnel in their jurisdiction. Look for the COOP link on the MI-TRAIN homepage for more information.</p>	<p>OPHP Joint Activity Room Lansing, MI</p>

Date/Time	Event Description	Location
May 5-6, 2008	<p>Emergency Planning</p> <p>This two-day course examines emergency and disaster planning principles and Michigan initiatives for new emergency management professionals. Planning concepts include preparedness, mitigation planning, hazard analysis, hazardous material planning, and new federal initiatives. This course is strongly recommended for all entry-level emergency managers.</p>	Lansing
May 16, 2008 8am-1pm	<p>Active Duty: Making Data, Policy, and Politics Work for Public Health</p> <p>This half-day workshop will focus on the important role of health-related data in formulating effective public health policy in the context of a political society. This is a hands-on workshop, so come prepared for participation and lively discussion! We will work through real and specific examples and you should leave with practice materials. To register and for more information, please see the Michigan Center for Public Health Preparedness's website or call (734) 763-6526.</p>	University of Michigan School of Public Health 109 S. Observatory Rm 2675 Ann Arbor, MI 48109 T: 734-615-9439 F: 734-763-7976 E: mphtc@umich.edu
May 19-22, 2008	<p>Effective Managing Transit Emergencies</p> <p>This course will provide information on understanding the importance, purpose, development, and implementation of emergency management and how it relates to the other safety functions of a transit system. Participants will learn how to better understand the emergency management concept and the role of the transit system in responding to emergency/disaster situations in both the community and transit system. Materials fee is \$55.</p>	Grand Rapids, MI
May 22, 2008	<p>MDCH Communicable Disease Conference</p> <p>This conference will provide the latest knowledge on communicable disease diagnosis, surveillance and reporting, incorporation of epidemiologic principles, and laboratory test interpretation. Conference fee is \$20 per person. Please see the informational brochure for more information, including registration details.</p>	Comfort Inn & Suites Hotel and Conf. Center 2424 South Mission St. Mt. Pleasant, MI 48858 T: (989) 772-4000
May 22, 2008	<p>Developing Volunteer Resources</p> <p>This one-day course is designed to cover a broad range of issues in disaster volunteerism expanding on the concepts presented in the prerequisite Independent Study. Topics will include spontaneous volunteerism in disasters, liability issues, marketing, recruitment, and recognition of volunteers.</p>	Lansing
May 27-Jul. 14, 2008	<p>Demystifying Data: Accessing, Interpreting, and Using Health Data</p> <p>This course focuses on the effective and systematic use of data in an evidence-based approach to decision making. Participants will be able to use data to develop a brief statement of the problem, describe the issue quantitatively, and develop data-based program or policy options. The course is designed for those who need to use data in their daily work but may not have considerable training in the use of data. For more information, see the Michigan Public Health Training Center website.</p>	School of Public Health University of Michigan 109 S. Observatory, Rm. 2675 Ann Arbor, MI 48109 T: 734-615-9439 F: 734-763-7976 E: mphtc@umich.edu
Jun. 11-14, 2008	<p>HIV Prevention Leadership Summit</p> <p>This year's Summit will again include institutes, workshops, roundtables and other sessions geared to planning groups, health departments and community-based organizations providing HIV, viral hepatitis, STD and TB prevention services, Centers for Disease Control and Prevention (CDC) capacity building assistance providers, and other federal and national partner agencies involved in HIV, viral hepatitis, STD and TB prevention.</p>	Renaissance Center Detroit, MI 48243 T: (313) 568-8000

Date/Time	Event Description	Location
Jun. 12, 2008	<p>"Tools of the Trade for Human Service Workers in Preparedness and Response" Conference</p> <p>This annual conference promotes an intellectual exchange among Michigan's behavioral health professionals, local health departments and others involved in improving mental health surrounding public health preparedness, mitigation, response and recovery to emergency and disaster. Please note there is a non-refundable conference fee of \$20. Logon to MI-TRAIN, search for course ID 1010420, and register today!</p>	<p>Lansing Conf. Center 333 E. Michigan Ave. Lansing, MI 48933</p>
Jul. 6-25, 2008	<p>Graduate Sessions in Epidemiology</p> <p>Courses are for all public health professionals and anyone interested in health research. One- and three-week courses are available in a range of topics. Distance learning courses available for the Fundamentals of Biostatistics, and the Fundamentals of Epidemiology. CME credit is available.</p>	<p>The Univ. of Michigan School of Public Health 109 Observatory St. Ann Arbor, MI 48109</p>
Jul. 8-10, 2008	<p>Great Lakes Border Health Initiative Conference</p> <p>Save the Date! For more information, view the announcement flyer.</p>	<p>Ann Arbor, MI</p>
Jul. 23-24, 2008	<p>Emergency Planning for Special Needs Populations</p> <p>This two-day course covers the unique concerns for organizations responsible for the care of "special needs" groups in disasters. This course will expand on the concepts covered in the prerequisite Independent Study 197 by discussing definition of "special needs populations" and highlighting the planning elements of mass care, sheltering, and evacuation.</p>	<p>Lansing</p>



Mailing Address:
Office of Public Health Preparedness
Capitol View Building - 201 Townsend Street - Lansing, MI 48913
(517) 335-8150 — <http://www.michigan.gov/ophp>

This publication is supported by Cooperative Agreement Number U90/CCU517018-08 from the Centers for Disease Control and Prevention (CDC). Its contents are solely the responsibility of the authors and do not necessarily represent the official views of CDC.

