

MEDICAID BLOOD LEAD TESTING

*Michigan Department
of Community Health*



May 2012

Blood Lead Testing Methodology

- **Children must have been eligible for one of the following programs in May 2012**
 - Medicaid Managed Care (MC)
 - enrolled in a Medicaid Health Plan (MHP)
 - Medicaid Fee-for-Service (FFS)
 - enrolled for Medicaid Only FFS coverage
 - Medicaid and CSHCS Dual Eligible (Duals)
 - dually eligible for both Medicaid and CSHCS
- **Blood Lead testing results include children tested:**
 - on or before indicated birthday for 2 and 3 year old
 - at any time between ages 1 to 6
- **Unique Client Identifier (UCI) used to establish link between Medicaid and lead databases.**

Blood Lead Testing Summary

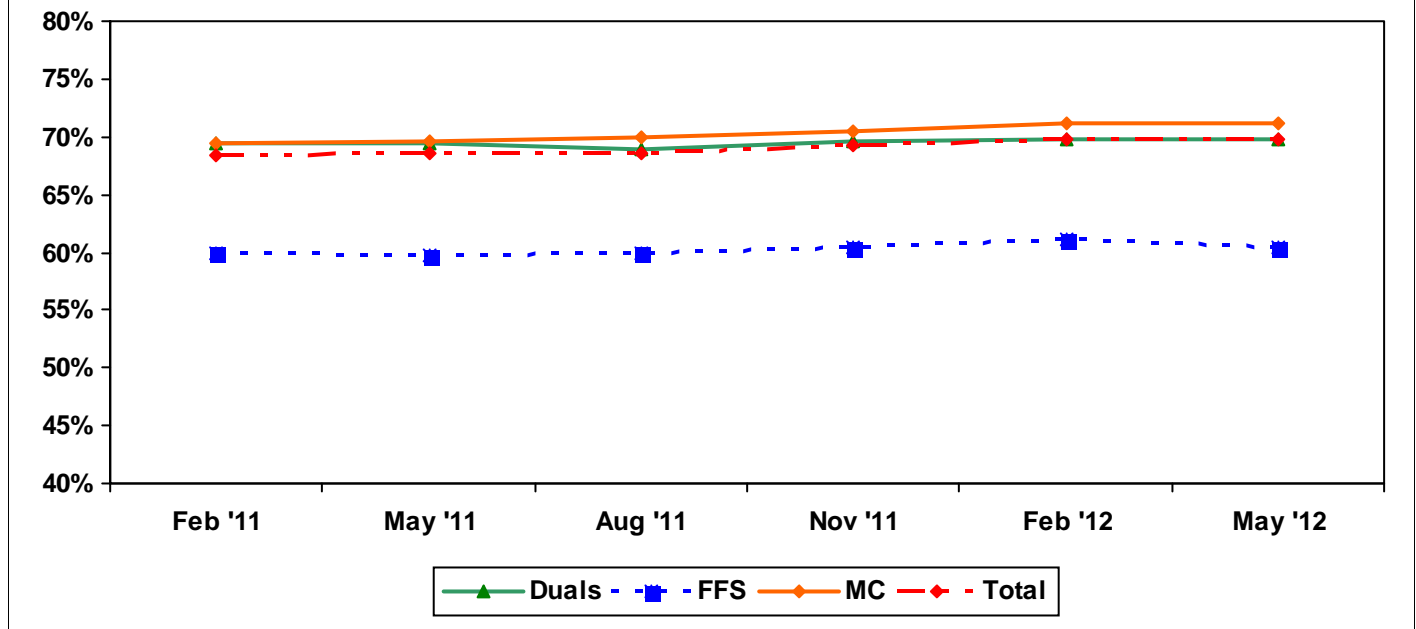
- **2 year old children tested on or before their 2nd birthday**

- 70% Statewide
- 70% City of Detroit
- 71% Statewide for Medicaid MC
 - 77% Statewide for Medicaid MC with 12-Month Continuous Enrollment
- 60% Statewide for Medicaid Only FFS Eligibles
- 70% Statewide for CSHCS Duals

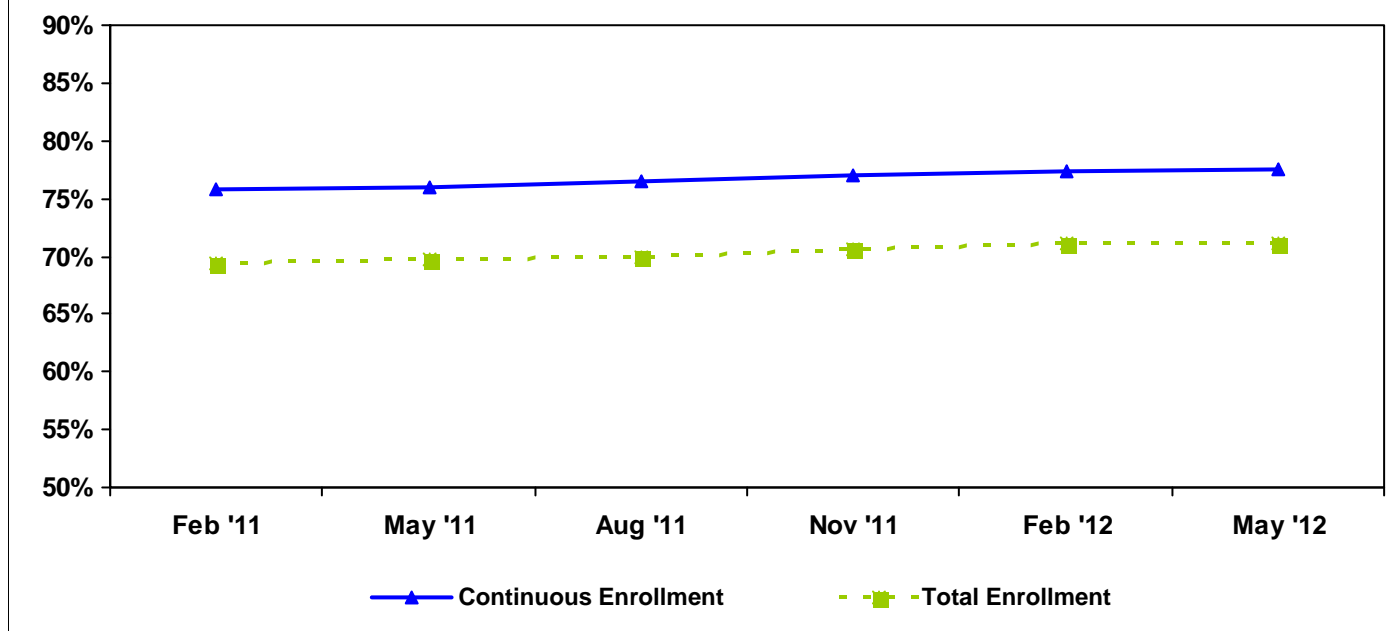
- **3 year old children tested on or before their 3rd birthday**

- 76% Statewide
- 80% City of Detroit
- 78% Statewide for Medicaid MC
 - 83% Statewide for Medicaid MC with 12-Month Continuous Enrollment
- 67% Statewide for Medicaid Only FFS Eligibles
- 77% Statewide for CSHCS Duals

Children Receiving at Least One Blood Lead Test on or before Second Birthday by Program Eligibility



Managed Care Enrolled Children Receiving at Least One Lead Test on or before Second Birthday



Total Enrollment

-Enrolled in measurement month

Continuous Enrollment

-Based on MMIS eligibility system

-Enrolled in same health plan for the measurement month and 12 months preceding 2nd birthday, with a 1-month allowable gap.

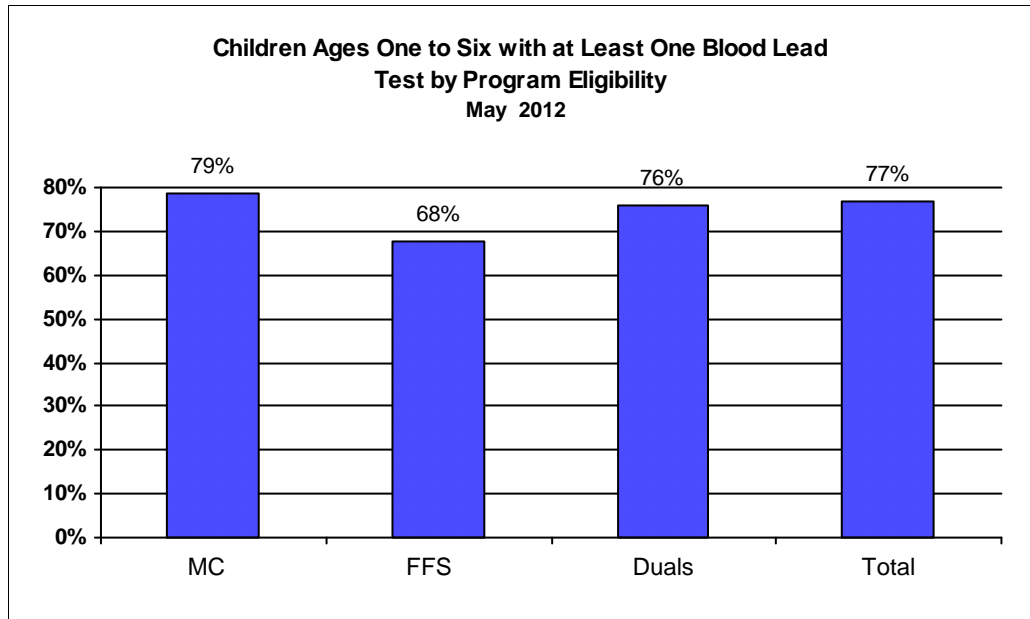
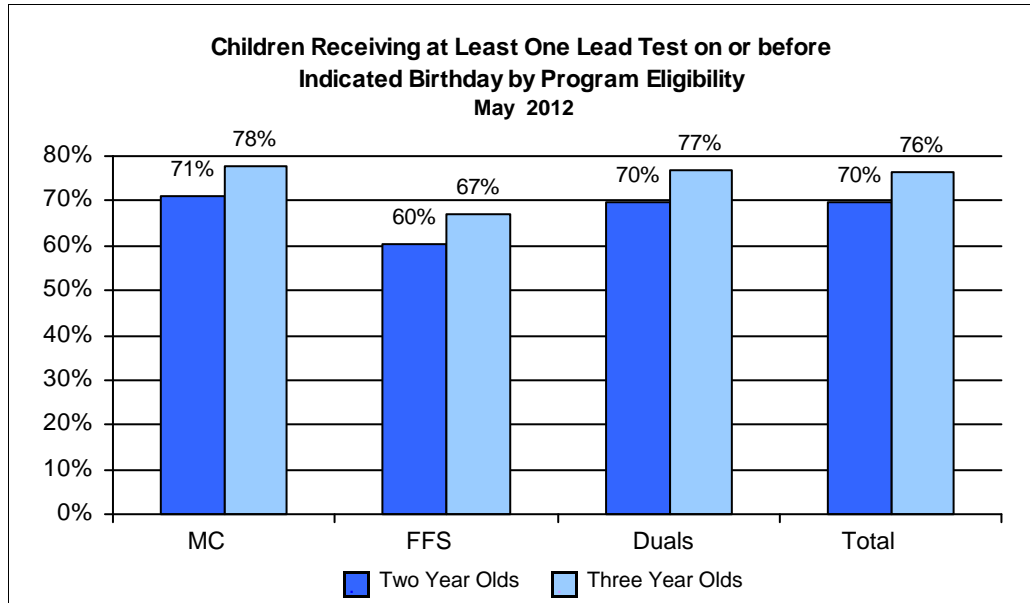


Table 1. Percent of Children with at Least One Blood Lead Test on or before their Second Birthday

Program	May-11	Jun-11	Jul-11	Aug-11	Sep-11	Oct-11	Nov-11	Dec-11	Jan-12	Feb-12	Mar-12	Apr-12	May-12
MC	69.7%	69.9%	69.7%	69.9%	69.9%	70.2%	70.6%	70.8%	70.9%	71.1%	71.1%	71.1%	71.1%
FFS	59.8%	60.4%	61.1%	59.9%	59.9%	60.7%	60.5%	59.9%	60.9%	61.1%	61.9%	61.6%	60.5%
Duals	69.4%	68.9%	69.1%	68.9%	68.9%	69.4%	69.6%	68.6%	68.9%	69.8%	69.4%	69.6%	69.8%
Total	68.6%	68.7%	68.7%	68.5%	68.5%	68.9%	69.2%	69.3%	69.5%	69.7%	69.8%	69.8%	69.7%

Table 2. Percent of Children with at Least One Blood Lead Test on or before their Third Birthday

Program	May-11	Jun-11	Jul-11	Aug-11	Sep-11	Oct-11	Nov-11	Dec-11	Jan-12	Feb-12	Mar-12	Apr-12	May-12
MC	75.9%	76.2%	76.6%	76.8%	76.8%	77.1%	77.1%	77.2%	77.4%	77.6%	77.6%	77.7%	77.7%
FFS	66.0%	66.1%	66.8%	66.6%	66.6%	66.9%	66.5%	66.8%	67.2%	67.7%	67.0%	66.6%	67.2%
Duals	76.1%	77.2%	77.2%	77.5%	77.5%	77.4%	77.0%	77.1%	77.2%	77.2%	77.5%	77.2%	77.0%
Total	74.8%	75.0%	75.5%	75.4%	75.4%	75.6%	75.7%	75.8%	76.0%	76.2%	76.1%	76.2%	76.2%

Table 3. Percent of Children Ages One to Six with at Least One Blood Lead Test

Program	May-11	Jun-11	Jul-11	Aug-11	Sep-11	Oct-11	Nov-11	Dec-11	Jan-12	Feb-12	Mar-12	Apr-12	May-12
MC	76.4%	76.8%	76.7%	78.5%	78.5%	78.5%	78.7%	78.9%	78.5%	78.6%	78.3%	78.3%	78.5%
FFS	67.3%	67.3%	67.2%	68.1%	68.1%	68.2%	67.7%	68.0%	68.0%	68.3%	67.9%	67.7%	67.5%
Duals	75.6%	76.2%	75.7%	76.8%	76.8%	77.0%	76.6%	76.6%	76.2%	75.9%	75.7%	75.6%	76.0%
Total	75.4%	75.6%	75.6%	77.0%	77.0%	77.0%	77.1%	77.3%	77.0%	77.1%	76.8%	76.8%	76.9%

Table 4. Statewide Blood Lead Testing of Two and Three Year Old Children for All Programs

May 2012

County	2 Years of Age			3 Years of Age		
	Eligibles	Eligibles with at least 1 test on or before their 2nd birthday	Percent of Eligibles with at least 1 test on or before their 2nd birthday	Eligibles	Eligibles with at least 1 test on or before their 3rd birthday	Percent of Eligibles with at least 1 test on or before their 3rd birthday
ALCONA	35	29	83%	32	24	75%
ALGER	46	39	85%	45	39	87%
ALLEGAN	654	391	60%	640	402	63%
ALPENA	172	133	77%	167	132	79%
ANTRIM	117	96	82%	117	94	80%
ARENAC	66	50	76%	102	92	90%
BARAGA	46	41	89%	53	47	89%
BARRY	288	211	73%	282	220	78%
BAY	560	460	82%	587	504	86%
BENZIE	77	57	74%	76	60	79%
BERRIEN	1,109	744	67%	1,084	817	75%
BRANCH	318	226	71%	327	242	74%
CALHOUN	969	663	68%	1,019	787	77%
CASS	338	215	64%	315	228	72%
CHARLEVOIX	145	114	79%	123	93	76%
CHEBOYGAN	150	117	78%	133	94	71%
CHIPPEWA	220	176	80%	204	171	84%
CLARE	229	175	76%	231	200	87%
CLINTON	248	192	77%	248	200	81%
CRAWFORD	71	49	69%	73	52	71%
DELTA	203	164	81%	212	171	81%
DICKINSON	132	111	84%	116	96	83%
EATON	445	342	77%	481	391	81%
EMMET	139	103	74%	138	103	75%
GENESEE	3,122	2,065	66%	3,265	2,366	72%
GLADWIN	132	109	83%	119	97	82%
GOGEBIC	81	60	74%	77	63	82%
GRAND TRAVERSE	426	277	65%	425	289	68%
GRATIOT	259	184	71%	255	179	70%
HILLSDALE	273	188	69%	292	214	73%
HOUGHTON	173	126	73%	193	148	77%
HURON	170	138	81%	166	140	84%
INGHAM	1,572	1,177	75%	1,592	1,326	83%
IONIA	374	269	72%	399	305	76%
IOSCO	142	82	58%	145	124	86%
IRON	63	50	79%	77	64	83%
ISABELLA	333	210	63%	324	214	66%
JACKSON	1,016	810	80%	1,006	841	84%
KALAMAZOO	1,464	1,110	76%	1,424	1,179	83%
KALKASKA	128	91	71%	136	95	70%
KENT	3,988	3,132	79%	4,052	3,314	82%
KEWEENAW	7	6	86%	8	4	50%

County	2 Years of Age			3 Years of Age		
	Eligibles	Eligibles with at least 1 test on or before their 2nd birthday	Percent of Eligibles with at least 1 test on or before their 2nd birthday	Eligibles	Eligibles with at least 1 test on or before their 3rd birthday	Percent of Eligibles with at least 1 test on or before their 3rd birthday
LAKE	60	48	80%	78	63	81%
LAPEER	414	247	60%	415	278	67%
LEELANAU	74	56	76%	60	47	78%
LENAWEE	596	467	78%	583	482	83%
LIVINGSTON	490	368	75%	506	344	68%
LUCE	42	39	93%	31	29	94%
MACKINAC	47	38	81%	41	35	85%
MACOMB	4,013	2,509	63%	3,938	2,669	68%
MANISTEE	135	110	81%	130	111	85%
MARQUETTE	305	223	73%	279	230	82%
MASON	180	160	89%	206	176	85%
MECOSTA	241	169	70%	248	177	71%
MENOMINEE	110	89	81%	118	86	73%
MIDLAND	382	220	58%	367	283	77%
MISSAUKEE	96	70	73%	98	72	73%
MONROE	784	592	76%	678	518	76%
MONTCALM	409	268	66%	422	327	77%
MONTMORENCY	52	45	87%	44	35	80%
MUSKEGON	1,336	812	61%	1,428	1,103	77%
NEWAYGO	355	269	76%	355	275	77%
OAKLAND	4,182	3,007	72%	4,309	3,269	76%
OCEANA	243	198	81%	247	199	81%
OGEMAW	144	91	63%	133	107	80%
ONTONAGON	22	18	82%	23	19	83%
OSCEOLA	176	132	75%	165	122	74%
OSCODA	42	20	48%	46	37	80%
OTSEGO	163	126	77%	184	123	67%
OTTAWA	1,138	646	57%	1,139	683	60%
PRESQUE ISLE	57	49	86%	46	34	74%
ROSCOMMON	120	92	77%	156	127	81%
SAGINAW	1,373	1,061	77%	1,415	1,208	85%
SAINT CLAIR	945	635	67%	936	633	68%
SAINT JOSEPH	483	295	61%	522	394	75%
SANILAC	273	194	71%	241	181	75%
SCHOOLCRAFT	44	37	84%	45	43	96%
SHIAWASSEE	391	288	74%	378	298	79%
TUSCOLA	309	252	82%	314	252	80%
VAN BUREN	572	338	59%	560	395	71%
WASHTENAW	1,298	758	58%	1,226	819	67%
DETROIT, CITY OF	10,148	7,063	70%	9,779	7,841	80%
WAYNE, ex Detroit	4,974	3,149	63%	5,026	3,631	72%
WEXFORD	251	181	72%	284	215	76%
MICHIGAN	57,969	40,411	70%	57,959	44,191	76%

Table 5. Statewide Blood Lead Testing of Two and Three Year Old Children Enrolled in Managed Care

May 2012

County	2 Years of Age			3 Years of Age		
	Eligibles	Eligibles with at least 1 test on or before their 2nd birthday	Percent of Eligibles with at least 1 test on or before their 2nd birthday	Eligibles	Eligibles with at least 1 test on or before their 3rd birthday	Percent of Eligibles with at least 1 test on or before their 3rd birthday
ALCONA	31	27	87%	24	19	79%
ALGER	35	29	83%	35	29	83%
ALLEGAN	518	330	64%	502	332	66%
ALPENA	152	123	81%	145	117	81%
ANTRIM	93	78	84%	89	74	83%
ARENAC	56	41	73%	81	74	91%
BARAGA	31	29	94%	33	28	85%
BARRY	199	156	78%	179	152	85%
BAY	488	404	83%	513	443	86%
BENZIE	61	45	74%	60	45	75%
BERRIEN	979	674	69%	939	720	77%
BRANCH	263	197	75%	262	201	77%
CALHOUN	806	557	69%	858	674	79%
CASS	272	178	65%	267	202	76%
CHARLEVOIX	117	93	79%	94	74	79%
CHEBOYGAN	111	88	79%	97	68	70%
CHIPPEWA	127	104	82%	117	98	84%
CLARE	202	161	80%	198	175	88%
CLINTON	206	163	79%	201	164	82%
CRAWFORD	60	42	70%	60	44	73%
DELTA	171	139	81%	165	135	82%
DICKINSON	104	89	86%	100	84	84%
EATON	355	286	81%	413	340	82%
EMMET	107	84	79%	100	76	76%
GENESEE	2,750	1,849	67%	2,893	2,132	74%
GLADWIN	120	99	83%	94	76	81%
GOGEBIC	70	51	73%	61	52	85%
GRAND TRAVERSE	344	236	69%	349	242	69%
GRATIOT	217	160	74%	208	154	74%
HILLSDALE	222	155	70%	251	182	73%
HOUGHTON	147	108	73%	157	123	78%
HURON	136	115	85%	132	110	83%
INGHAM	1,352	1,031	76%	1,379	1,162	84%
IONIA	302	220	73%	311	243	78%
IOSCO	129	74	57%	120	107	89%
IRON	58	47	81%	68	58	85%
ISABELLA	275	184	67%	261	184	70%
JACKSON	842	684	81%	839	710	85%
KALAMAZOO	1,223	950	78%	1,199	1,003	84%
KALKASKA	111	81	73%	117	84	72%
KENT	3,309	2,633	80%	3,348	2,790	83%
KEWEENAW	7	6	86%	6	3	50%

County	2 Years of Age			3 Years of Age		
	Eligibles	Eligibles with at least 1 test on or before their 2nd birthday	Percent of Eligibles with at least 1 test on or before their 2nd birthday	Eligibles	Eligibles with at least 1 test on or before their 3rd birthday	Percent of Eligibles with at least 1 test on or before their 3rd birthday
LAKE	56	45	80%	69	56	81%
LAPEER	340	213	63%	344	244	71%
LEELANAU	56	46	82%	40	34	85%
LENAWEE	495	395	80%	473	400	85%
LIVINGSTON	412	319	77%	392	270	69%
LUCE	30	27	90%	23	22	96%
MACKINAC	31	25	81%	27	22	81%
MACOMB	3,455	2,229	65%	3,384	2,358	70%
MANISTEE	103	83	81%	105	91	87%
MARQUETTE	268	200	75%	242	201	83%
MASON	157	141	90%	176	151	86%
MECOSTA	203	149	73%	216	153	71%
MENOMINEE	83	65	78%	85	66	78%
MIDLAND	321	188	59%	288	224	78%
MISSAUKEE	77	57	74%	78	63	81%
MONROE	628	488	78%	547	420	77%
MONTCALM	317	218	69%	353	273	77%
MONTMORENCY	46	40	87%	37	30	81%
MUSKEGON	1,145	704	61%	1,200	940	78%
NEWAYGO	298	231	78%	297	231	78%
OAKLAND	3,557	2,635	74%	3,701	2,870	78%
OCEANA	198	171	86%	186	160	86%
OGEAW	120	75	63%	112	89	79%
ONTONAGON	18	15	83%	18	15	83%
OSCEOLA	132	106	80%	130	99	76%
OSCODA	35	17	49%	40	33	83%
OTSEGO	134	108	81%	152	103	68%
OTTAWA	849	484	57%	861	530	62%
PRESQUE ISLE	48	43	90%	38	28	74%
ROSCOMMON	108	80	74%	126	101	80%
SAGINAW	1,178	927	79%	1,253	1,085	87%
SAINT CLAIR	810	563	70%	788	552	70%
SAINT JOSEPH	388	248	64%	420	321	76%
SANILAC	232	170	73%	202	156	77%
SCHOOLCRAFT	36	30	83%	36	36	100%
SHIAWASSEE	324	252	78%	330	270	82%
TUSCOLA	265	226	85%	269	221	82%
VAN BUREN	482	290	60%	479	350	73%
WASHTENAW	1,093	645	59%	1,007	706	70%
DETROIT, CITY OF	9,048	6,372	70%	8,663	6,996	81%
WAYNE, ex Detroit	4,311	2,768	64%	4,304	3,170	74%
WEXFORD	185	139	75%	216	164	76%
MICHIGAN	49,230	35,027	71%	49,032	38,087	78%

**Table 6. Statewide Blood Lead Testing of Two and Three Year Old Children Eligible for Medicaid Only Fee-for-Service Coverage
May 2012**

County	2 Years of Age			3 Years of Age		
	Eligibles	Eligibles with at least 1 test on or before their 2nd birthday	Percent of Eligibles with at least 1 test on or before their 2nd birthday	Eligibles	Eligibles with at least 1 test on or before their 3rd birthday	Percent of Eligibles with at least 1 test on or before their 3rd birthday
ALCONA	2	0	0%	7	4	57%
ALGER	9	8	89%	10	10	100%
ALLEGAN	124	51	41%	125	63	50%
ALPENA	18	9	50%	20	13	65%
ANTRIM	23	17	74%	23	16	70%
ARENAC	8	7	88%	14	11	79%
BARAGA	15	12	80%	20	19	95%
BARRY	81	49	60%	93	61	66%
BAY	62	47	76%	67	54	81%
BENZIE	15	11	73%	13	12	92%
BERRIEN	119	63	53%	128	82	64%
BRANCH	49	25	51%	55	34	62%
CALHOUN	148	93	63%	140	96	69%
CASS	62	35	56%	46	26	57%
CHARLEVOIX	23	16	70%	23	16	70%
CHEBOYGAN	39	29	74%	32	23	72%
CHIPPEWA	88	69	78%	85	71	84%
CLARE	24	11	46%	28	21	75%
CLINTON	36	23	64%	43	33	77%
CRAWFORD	10	6	60%	10	5	50%
DELTA	27	21	78%	44	33	75%
DICKINSON	28	22	79%	15	11	73%
EATON	83	53	64%	60	44	73%
EMMET	28	16	57%	33	23	70%
GENESEE	313	172	55%	306	185	60%
GLADWIN	12	10	83%	23	19	83%
GOGEBIC	9	7	78%	16	11	69%
GRAND TRAVERSE	72	32	44%	69	40	58%
GRATIOT	36	20	56%	45	23	51%
HILLSDALE	46	30	65%	35	26	74%
HOUGHTON	23	15	65%	32	22	69%
HURON	31	22	71%	32	28	88%
INGHAM	196	125	64%	184	139	76%
IONIA	62	41	66%	79	56	71%
IOSCO	10	6	60%	21	13	62%
IRON	5	3	60%	8	5	63%
ISABELLA	52	24	46%	56	27	48%
JACKSON	136	95	70%	133	103	77%
KALAMAZOO	211	136	64%	192	148	77%
KALKASKA	15	10	67%	16	8	50%
KENT	593	434	73%	631	467	74%
KEWEENAW	0	0	NA	2	1	50%

County	2 Years of Age			3 Years of Age		
	Eligibles	Eligibles with at least 1 test on or before their 2nd birthday	Percent of Eligibles with at least 1 test on or before their 2nd birthday	Eligibles	Eligibles with at least 1 test on or before their 3rd birthday	Percent of Eligibles with at least 1 test on or before their 3rd birthday
LAKE	3	2	67%	8	6	75%
LAPEER	67	29	43%	64	30	47%
LEELANAU	17	10	59%	19	12	63%
LENAWEE	88	60	68%	103	76	74%
LIVINGSTON	68	43	63%	97	61	63%
LUCE	9	9	100%	7	6	86%
MACKINAC	15	12	80%	14	13	93%
MACOMB	483	237	49%	496	276	56%
MANISTEE	29	24	83%	22	17	77%
MARQUETTE	35	22	63%	34	26	76%
MASON	19	16	84%	26	22	85%
MECOSTA	30	13	43%	29	22	76%
MENOMINEE	26	23	88%	33	20	61%
MIDLAND	49	24	49%	68	49	72%
MISSAUKEE	15	10	67%	19	9	47%
MONROE	145	96	66%	116	87	75%
MONTCALM	78	44	56%	60	46	77%
MONTMORENCY	5	4	80%	6	4	67%
MUSKEGON	171	96	56%	205	148	72%
NEWAYGO	50	32	64%	50	38	76%
OAKLAND	544	317	58%	529	342	65%
OCEANA	42	24	57%	55	34	62%
OGEMAW	20	14	70%	20	17	85%
ONTONAGON	4	3	75%	3	2	67%
OSCEOLA	37	22	59%	31	20	65%
OSCODA	6	2	33%	6	4	67%
OTSEGO	24	14	58%	27	17	63%
OTTAWA	259	145	56%	246	131	53%
PRESQUE ISLE	7	4	57%	5	3	60%
ROSCOMMON	10	10	100%	26	23	88%
SAGINAW	172	117	68%	145	110	76%
SAINT CLAIR	120	63	53%	135	74	55%
SAINT JOSEPH	81	38	47%	90	63	70%
SANILAC	38	22	58%	35	21	60%
SCHOOLCRAFT	7	6	86%	9	7	78%
SHIAWASSEE	60	30	50%	42	23	55%
TUSCOLA	37	22	59%	37	24	65%
VAN BUREN	73	37	51%	76	43	57%
WASHTENAW	178	96	54%	188	92	49%
DETROIT, CITY OF	969	605	62%	956	708	74%
WAYNE, ex Detroit	584	333	57%	631	397	63%
WEXFORD	61	38	62%	64	47	73%
MICHIGAN	7,678	4,643	60%	7,846	5,272	67%

Table 7: Blood Lead Testing of Two Year Old Children by Length of Enrollment
May 2012

Health Plan Name	Total Enrollment			Continuous Enrollment			
	Eligibles	Eligibles with at least 1 test on or before their 2nd birthday	Percent of Eligibles with at least 1 test on or before their 2nd birthday	Eligibles	Eligibles with at least 1 test on or before their 2nd birthday	Percent of Eligibles with at least 1 test on or before their 2nd birthday	Percentage Point Difference with Continuous Enrollment
BlueCaid	771	513	67%	451	338	75%	8
Care Source	1,329	978	74%	754	586	78%	4
Great Lakes Health Plan	9,709	7,048	73%	6,013	4,708	78%	6
Health Plan of MI	12,745	9,213	72%	7,457	5,995	80%	8
HealthPlus Partners	2,490	1,859	75%	1,733	1,386	80%	5
McLaren Health Plan	3,284	2,405	73%	1,978	1,609	81%	8
Midwest Health Plan	2,741	1,662	61%	1,506	1,014	67%	7
Molina Healthcare of Michigan	8,173	5,806	71%	5,316	3,995	75%	4
OmniCare	1,458	1,011	69%	985	724	74%	4
PHP of Mid Michigan Family Care	751	577	77%	452	373	83%	6
Priority Health Government Programs	2,649	1,861	70%	1,500	1,144	76%	6
Procure Health Plan	215	111	52%	91	46	51%	-1
Total Health Care	1,731	1,034	60%	1,024	672	66%	6
Upper Peninsula Health Plan	1,217	965	79%	800	699	87%	8
Managed Care Totals/Percent	49,263	35,043	71%	30,060	23,289	77%	6
Current Performance Monitoring Standard			N/A			80%	
FFS (Title XIX only)	7,706	4,656	60%	1,433	1,003	70%	10
FFS (Title V/XIX)	1,063	741	70%	-364	-272	75%	5
FFS Totals (Title XIX & V/XIX)	8,769	5,397	62%	1,069	731	68%	6

Total Enrollment

- Based on MMIS eligibility system
- Enrolled in plan (health plan or FFS) for the measurement month

Continuous Enrollment

- Based on MMIS eligibility system
- Enrolled in same plan (health plan or FFS) for the measurement month and 12 months preceding 2nd birthday, with 1-month allowable gap

**Table 8. Blood Lead Testing of Three Year Old Children by Length of Enrollment
May 2012**

Health Plan Name	Total Enrollment			Continuous Enrollment			
	Eligibles	Eligibles with at least 1 test on or before their 3rd birthday	Percent of Eligibles with at least 1 test on or before their 3rd birthday	Eligibles	Eligibles with at least 1 test on or before their 3rd birthday	Percent of Eligibles with at least 1 test on or before their 3rd birthday	Percentage Point Difference with Continuous Enrollment
BlueCaid	764	533	70%	511	386	76%	6
Care Source	1,287	984	76%	776	632	81%	5
Great Lakes Health Plan	9,545	7,567	79%	6,196	5,224	84%	5
Health Plan of MI	12,280	9,426	77%	7,523	6,304	84%	7
HealthPlus Partners	2,709	2,184	81%	1,987	1,671	84%	3
McLaren Health Plan	3,276	2,504	76%	2,061	1,682	82%	6
Midwest Health Plan	2,756	2,030	74%	1,679	1,330	79%	5
Molina Healthcare of Michigan	8,297	6,612	80%	5,767	4,814	83%	3
OmniCare	1,435	1,153	80%	1,013	834	82%	2
PHP of Mid Michigan Family Care	759	643	85%	494	449	91%	6
Priority Health Government Programs	2,818	2,107	75%	1,706	1,369	80%	5
Procure Health Plan	160	103	64%	76	53	70%	6
Total Health Care	1,799	1,281	71%	1,084	847	78%	7
Upper Peninsula Health Plan	1,181	979	83%	809	721	89%	6
Managed Care Totals/Percent	49,066	38,106	78%	31,682	26,316	83%	5
FFS (Title XIX only)	7,888	5,295	67%	1,943	1,445	74%	7
FFS (Title V/XIX)	1,086	836	77%	829	646	78%	1
FFS Totals (Title XIX & V/XIX)	8,974	6,131	68%	2,772	2,091	75%	7

Total Enrollment

- Based on MMIS eligibility system
- Enrolled in plan (health plan or FFS) for the measurement month

Continuous Enrollment

- Based on MMIS eligibility system
- Enrolled in same plan (health plan or FFS) for the measurement month and 12 months preceding 3rd birthday, with 1-month allowable gap