

MEDICAID BLOOD LEAD TESTING

*Michigan Department
of Community Health*



April 2012

Blood Lead Testing Methodology

- **Children must have been eligible for one of the following programs in April 2012**
 - Medicaid Managed Care (MC)
 - enrolled in a Medicaid Health Plan (MHP)
 - Medicaid Fee-for-Service (FFS)
 - enrolled for Medicaid Only FFS coverage
 - Medicaid and CSHCS Dual Eligible (Duals)
 - dually eligible for both Medicaid and CSHCS
- **Blood Lead testing results include children tested:**
 - on or before indicated birthday for 2 and 3 year old
 - at any time between ages 1 to 6
- **Unique Client Identifier (UCI) used to establish link between Medicaid and lead databases.**

Blood Lead Testing Summary

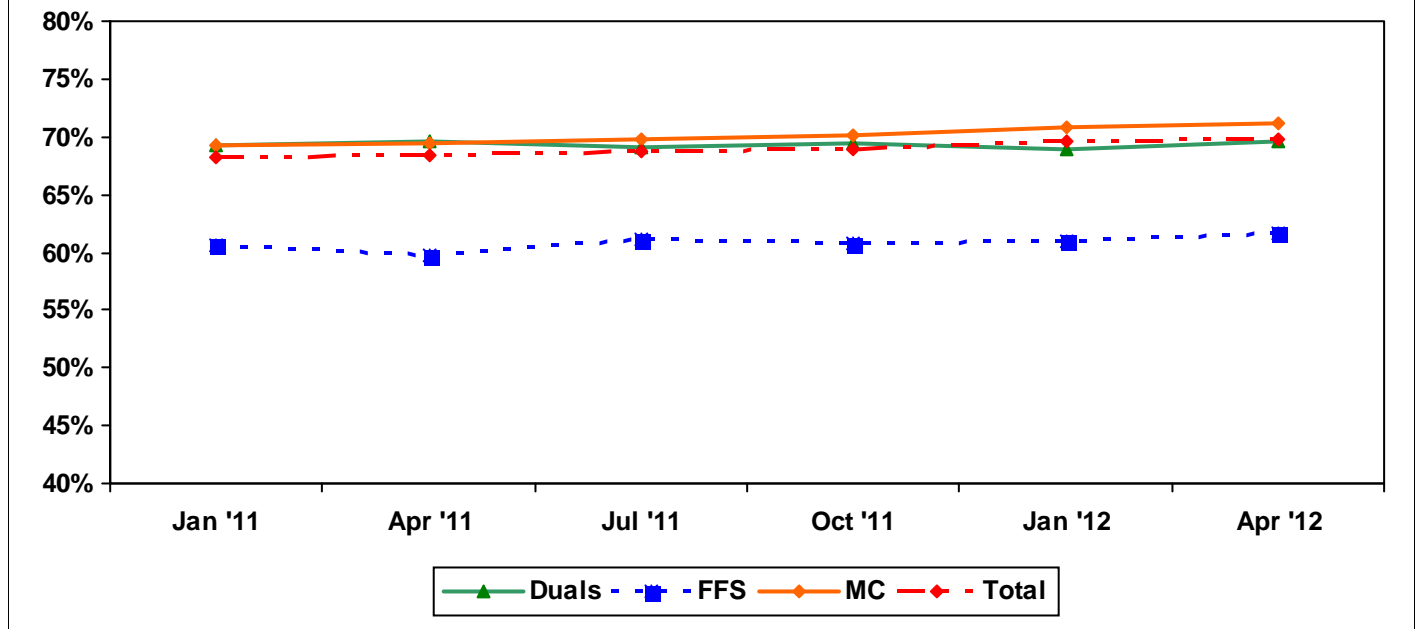
- **2 year old children tested on or before their 2nd birthday**

- 70% Statewide
- 70% City of Detroit
- 71% Statewide for Medicaid MC
 - 77% Statewide for Medicaid MC with 12-Month Continuous Enrollment
- 62% Statewide for Medicaid Only FFS Eligibles
- 70% Statewide for CSHCS Duals

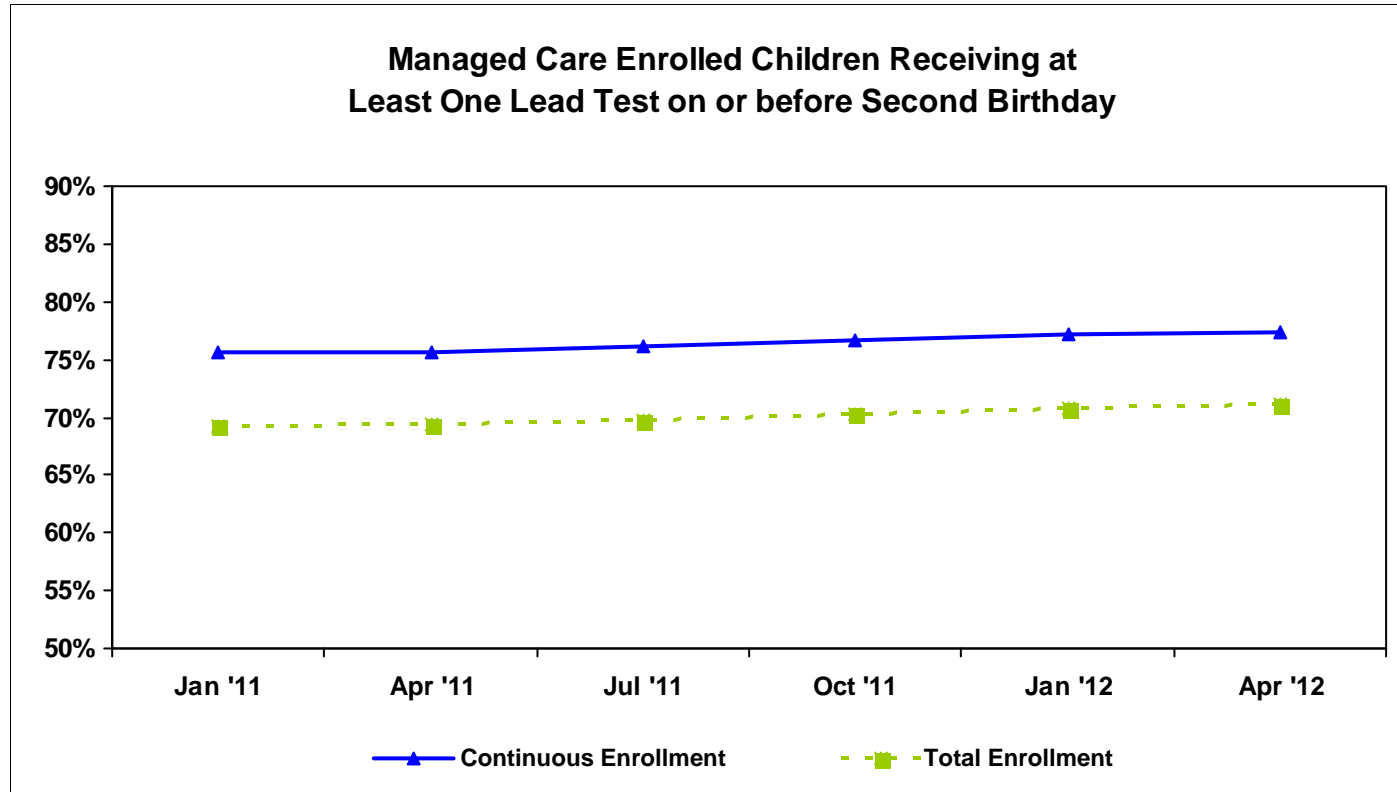
- **3 year old children tested on or before their 3rd birthday**

- 76% Statewide
- 80% City of Detroit
- 78% Statewide for Medicaid MC
 - 83% Statewide for Medicaid MC with 12-Month Continuous Enrollment
- 67% Statewide for Medicaid Only FFS Eligibles
- 77% Statewide for CSHCS Duals

Children Receiving at Least One Blood Lead Test on or before Second Birthday by Program Eligibility



Managed Care Enrolled Children Receiving at Least One Lead Test on or before Second Birthday



Total Enrollment

-Enrolled in measurement month

Continuous Enrollment

-Based on MMIS eligibility system

-Enrolled in same health plan for the measurement month and 12 months preceding 2nd birthday, with a 1-month allowable gap.

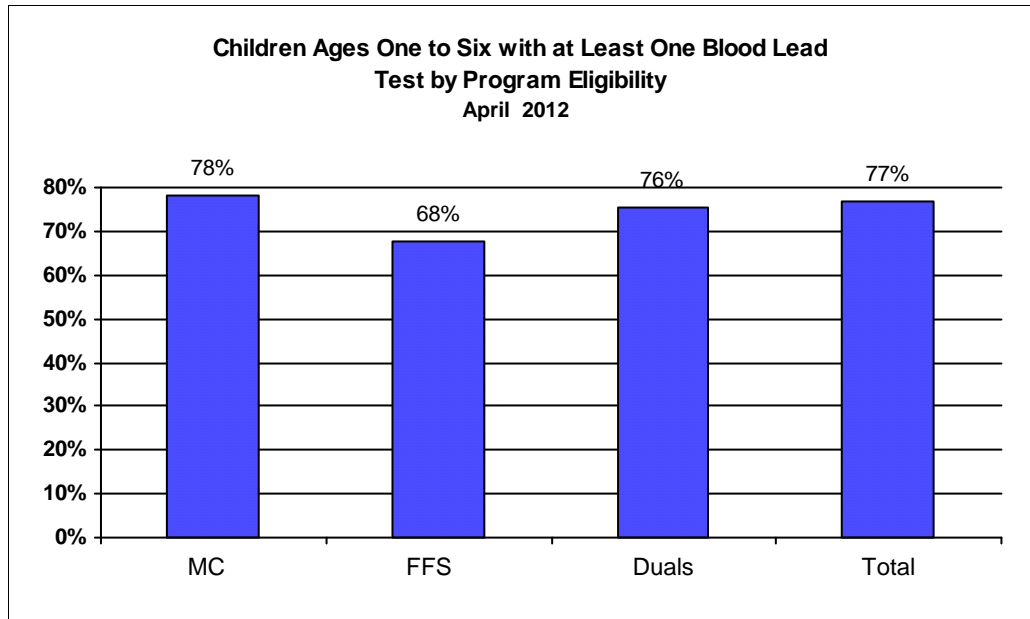
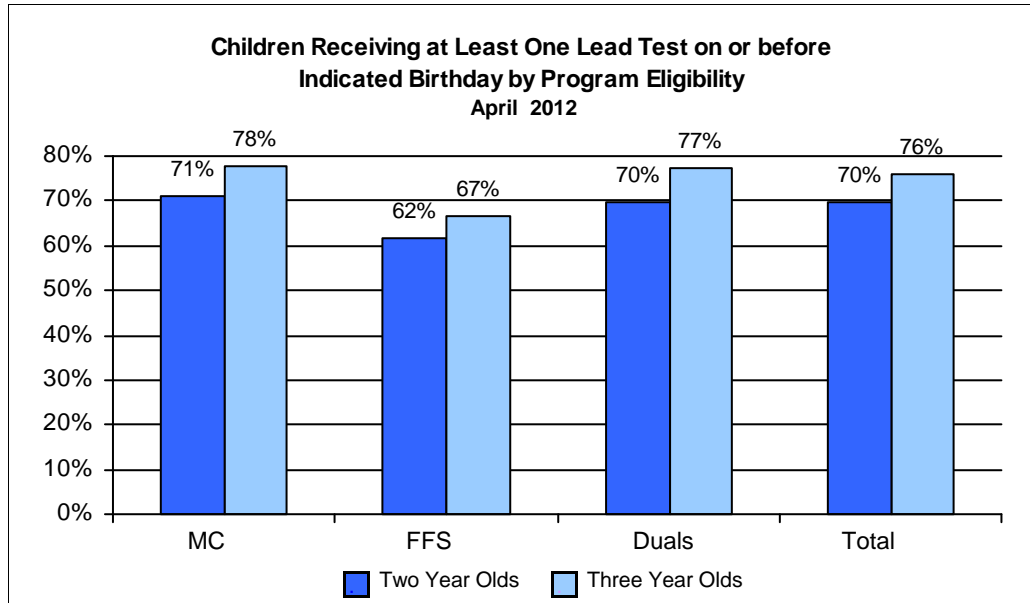


Table 1. Percent of Children with at Least One Blood Lead Test on or before their Second Birthday

Program	Apr-11	May-11	Jun-11	Jul-11	Aug-11	Sep-11	Oct-11	Nov-11	Dec-11	Jan-12	Feb-12	Mar-12	Apr-12
MC	69.5%	69.7%	69.9%	69.7%	69.9%	69.9%	70.2%	70.6%	70.8%	70.9%	71.1%	71.1%	71.1%
FFS	59.7%	59.8%	60.4%	61.1%	59.9%	59.9%	60.7%	60.5%	59.9%	60.9%	61.1%	61.9%	61.6%
Duals	69.7%	69.4%	68.9%	69.1%	68.9%	68.9%	69.4%	69.6%	68.6%	68.9%	69.8%	69.4%	69.6%
Total	68.4%	68.6%	68.7%	68.7%	68.5%	68.5%	68.9%	69.2%	69.3%	69.5%	69.7%	69.8%	69.8%

Table 2. Percent of Children with at Least One Blood Lead Test on or before their Third Birthday

Program	Apr-11	May-11	Jun-11	Jul-11	Aug-11	Sep-11	Oct-11	Nov-11	Dec-11	Jan-12	Feb-12	Mar-12	Apr-12
MC	75.7%	75.9%	76.2%	76.6%	76.8%	76.8%	77.1%	77.1%	77.2%	77.4%	77.6%	77.6%	77.7%
FFS	65.8%	66.0%	66.1%	66.8%	66.6%	66.6%	66.9%	66.5%	66.8%	67.2%	67.7%	67.0%	66.6%
Duals	75.8%	76.1%	77.2%	77.2%	77.5%	77.5%	77.4%	77.0%	77.1%	77.2%	77.2%	77.5%	77.2%
Total	74.5%	74.8%	75.0%	75.5%	75.4%	75.4%	75.6%	75.7%	75.8%	76.0%	76.2%	76.1%	76.2%

Table 3. Percent of Children Ages One to Six with at Least One Blood Lead Test

Program	Apr-11	May-11	Jun-11	Jul-11	Aug-11	Sep-11	Oct-11	Nov-11	Dec-11	Jan-12	Feb-12	Mar-12	Apr-12
MC	76.4%	76.4%	76.8%	76.7%	78.5%	78.5%	78.5%	78.7%	78.9%	78.5%	78.6%	78.3%	78.3%
FFS	67.1%	67.3%	67.3%	67.2%	68.1%	68.1%	68.2%	67.7%	68.0%	68.0%	68.3%	67.9%	67.7%
Duals	75.8%	75.6%	76.2%	75.7%	76.8%	76.8%	77.0%	76.6%	76.6%	76.2%	75.9%	75.7%	75.6%
Total	75.2%	75.4%	75.6%	75.6%	77.0%	77.0%	77.0%	77.1%	77.3%	77.0%	77.1%	76.8%	76.8%

Table 4. Statewide Blood Lead Testing of Two and Three Year Old Children for All Programs

April 2012

County	2 Years of Age			3 Years of Age		
	Eligibles	Eligibles with at least 1 test on or before their 2nd birthday	Percent of Eligibles with at least 1 test on or before their 2nd birthday	Eligibles	Eligibles with at least 1 test on or before their 3rd birthday	Percent of Eligibles with at least 1 test on or before their 3rd birthday
ALCONA	35	29	83%	34	26	76%
ALGER	47	40	85%	40	35	88%
ALLEGAN	627	374	60%	635	409	64%
ALPENA	163	126	77%	154	122	79%
ANTRIM	121	100	83%	112	90	80%
ARENAC	69	53	77%	104	94	90%
BARAGA	42	37	88%	55	49	89%
BARRY	286	207	72%	288	225	78%
BAY	571	470	82%	574	487	85%
BENZIE	76	52	68%	83	65	78%
BERRIEN	1,105	757	69%	1,080	809	75%
BRANCH	323	231	72%	317	236	74%
CALHOUN	973	683	70%	1,023	798	78%
CASS	334	218	65%	319	228	71%
CHARLEVOIX	133	103	77%	122	94	77%
CHEBOYGAN	144	109	76%	134	96	72%
CHIPPEWA	215	171	80%	198	166	84%
CLARE	234	180	77%	225	194	86%
CLINTON	254	198	78%	252	198	79%
CRAWFORD	67	49	73%	80	54	68%
DELTA	210	168	80%	216	174	81%
DICKINSON	125	106	85%	126	105	83%
EATON	450	340	76%	483	396	82%
EMMET	143	106	74%	137	104	76%
GENESEE	3,072	2,030	66%	3,319	2,370	71%
GLADWIN	127	104	82%	115	94	82%
GOGEBIC	85	64	75%	77	64	83%
GRAND TRAVERSE	421	277	66%	419	284	68%
GRATIOT	262	189	72%	256	180	70%
HILLSDALE	274	191	70%	311	224	72%
HOUGHTON	169	120	71%	198	156	79%
HURON	177	143	81%	154	127	82%
INGHAM	1,572	1,181	75%	1,593	1,331	84%
IONIA	361	269	75%	401	299	75%
IOSCO	143	86	60%	143	121	85%
IRON	62	50	81%	75	65	87%
ISABELLA	339	213	63%	325	211	65%
JACKSON	993	793	80%	1,028	859	84%
KALAMAZOO	1,417	1,087	77%	1,420	1,179	83%
KALKASKA	135	97	72%	132	90	68%
KENT	3,972	3,106	78%	4,061	3,295	81%
KEWEENAW	11	9	82%	3	0	0%

County	2 Years of Age			3 Years of Age		
	Eligibles	Eligibles with at least 1 test on or before their 2nd birthday	Percent of Eligibles with at least 1 test on or before their 2nd birthday	Eligibles	Eligibles with at least 1 test on or before their 3rd birthday	Percent of Eligibles with at least 1 test on or before their 3rd birthday
LAKE	64	51	80%	82	71	87%
LAPEER	405	240	59%	425	286	67%
LEELANAU	68	52	76%	62	50	81%
LENAWEE	603	472	78%	574	474	83%
LIVINGSTON	483	362	75%	513	337	66%
LUCE	36	34	94%	36	33	92%
MACKINAC	46	37	80%	45	38	84%
MACOMB	3,982	2,486	62%	3,906	2,646	68%
MANISTEE	130	107	82%	129	106	82%
MARQUETTE	310	227	73%	287	232	81%
MASON	190	167	88%	209	178	85%
MECOSTA	248	174	70%	240	169	70%
MENOMINEE	103	84	82%	121	92	76%
MIDLAND	391	229	59%	363	284	78%
MISSAUKEE	95	69	73%	98	69	70%
MONROE	767	580	76%	694	528	76%
MONTCALM	406	270	67%	430	328	76%
MONTMORENCY	51	45	88%	46	37	80%
MUSKEGON	1,352	840	62%	1,425	1,110	78%
NEWAYGO	364	280	77%	343	262	76%
OAKLAND	4,248	3,067	72%	4,304	3,266	76%
OCEANA	236	198	84%	235	193	82%
OGEMAW	140	92	66%	131	107	82%
ONTONAGON	21	17	81%	23	20	87%
OSCEOLA	168	126	75%	160	117	73%
OSCODA	41	21	51%	48	39	81%
OTSEGO	155	115	74%	182	125	69%
OTTAWA	1,152	646	56%	1,122	674	60%
PRESQUE ISLE	54	45	83%	47	38	81%
ROSCOMMON	136	101	74%	145	116	80%
SAGINAW	1,377	1,082	79%	1,410	1,206	86%
SAINT CLAIR	918	594	65%	938	635	68%
SAINT JOSEPH	486	297	61%	515	385	75%
SANILAC	277	197	71%	239	184	77%
SCHOOLCRAFT	42	36	86%	42	39	93%
SHIAWASSEE	386	279	72%	390	316	81%
TUSCOLA	304	249	82%	324	267	82%
VAN BUREN	575	344	60%	560	390	70%
WASHTENAW	1,330	766	58%	1,226	804	66%
DETROIT, CITY OF	10,010	6,963	70%	9,782	7,868	80%
WAYNE, ex Detroit	4,973	3,156	63%	5,044	3,638	72%
WEXFORD	245	177	72%	289	211	73%
MICHIGAN	57,707	40,290	70%	58,005	44,171	76%

Table 5. Statewide Blood Lead Testing of Two and Three Year Old Children Enrolled in Managed Care

April 2012

County	2 Years of Age			3 Years of Age		
	Eligibles	Eligibles with at least 1 test on or before their 2nd birthday	Percent of Eligibles with at least 1 test on or before their 2nd birthday	Eligibles	Eligibles with at least 1 test on or before their 3rd birthday	Percent of Eligibles with at least 1 test on or before their 3rd birthday
ALCONA	31	27	87%	27	20	74%
ALGER	36	29	81%	31	27	87%
ALLEGAN	491	307	63%	488	336	69%
ALPENA	149	119	80%	132	107	81%
ANTRIM	99	83	84%	88	74	84%
ARENAC	57	42	74%	81	74	91%
BARAGA	30	28	93%	36	31	86%
BARRY	205	160	78%	172	145	84%
BAY	491	404	82%	498	423	85%
BENZIE	54	36	67%	64	49	77%
BERRIEN	983	688	70%	928	710	77%
BRANCH	276	207	75%	265	201	76%
CALHOUN	803	564	70%	851	674	79%
CASS	277	185	67%	273	202	74%
CHARLEVOIX	97	76	78%	83	69	83%
CHEBOYGAN	109	83	76%	85	63	74%
CHIPPEWA	132	107	81%	112	93	83%
CLARE	210	169	80%	187	165	88%
CLINTON	212	168	79%	204	160	78%
CRAWFORD	52	40	77%	64	46	72%
DELTA	172	139	81%	179	144	80%
DICKINSON	97	86	89%	111	98	88%
EATON	363	287	79%	406	340	84%
EMMET	104	83	80%	99	75	76%
GENESEE	2,724	1,818	67%	2,937	2,137	73%
GLADWIN	111	91	82%	96	78	81%
GOGEBIC	75	56	75%	61	52	85%
GRAND TRAVERSE	339	238	70%	350	240	69%
GRATIOT	225	167	74%	207	153	74%
HILLSDALE	222	158	71%	258	188	73%
HOUGHTON	144	105	73%	166	132	80%
HURON	142	118	83%	122	99	81%
INGHAM	1,352	1,029	76%	1,378	1,163	84%
IONIA	300	226	75%	311	238	77%
IOSCO	129	76	59%	124	109	88%
IRON	56	45	80%	65	57	88%
ISABELLA	282	186	66%	261	181	69%
JACKSON	806	661	82%	852	722	85%
KALAMAZOO	1,196	930	78%	1,201	1,016	85%
KALKASKA	115	86	75%	116	82	71%
KENT	3,291	2,605	79%	3,376	2,784	82%
KEWEENAW	11	9	82%	2	0	0%

County	2 Years of Age			3 Years of Age		
	Eligibles	Eligibles with at least 1 test on or before their 2nd birthday	Percent of Eligibles with at least 1 test on or before their 2nd birthday	Eligibles	Eligibles with at least 1 test on or before their 3rd birthday	Percent of Eligibles with at least 1 test on or before their 3rd birthday
LAKE	59	48	81%	71	60	85%
LAPEER	336	206	61%	354	251	71%
LEELANAU	52	41	79%	42	37	88%
LENAWEE	499	399	80%	465	390	84%
LIVINGSTON	399	310	78%	410	269	66%
LUCE	25	23	92%	27	25	93%
MACKINAC	33	26	79%	27	22	81%
MACOMB	3,429	2,214	65%	3,340	2,333	70%
MANISTEE	94	77	82%	105	87	83%
MARQUETTE	271	203	75%	252	205	81%
MASON	166	146	88%	179	154	86%
MECOSTA	209	151	72%	209	147	70%
MENOMINEE	77	60	78%	81	63	78%
MIDLAND	318	187	59%	295	237	80%
MISSAUKEE	79	58	73%	79	61	77%
MONROE	628	483	77%	564	432	77%
MONTCALM	317	226	71%	359	277	77%
MONTMORENCY	45	40	89%	40	32	80%
MUSKEGON	1,171	737	63%	1,185	941	79%
NEWAYGO	295	233	79%	287	223	78%
OAKLAND	3,635	2,684	74%	3,667	2,850	78%
OCEANA	195	169	87%	192	163	85%
OGEAW	114	74	65%	110	89	81%
ONTONAGON	18	15	83%	18	15	83%
OSCEOLA	132	103	78%	129	97	75%
OSCODA	35	18	51%	42	35	83%
OTSEGO	126	100	79%	156	112	72%
OTTAWA	847	480	57%	829	513	62%
PRESQUE ISLE	45	40	89%	38	30	79%
ROSCOMMON	120	87	73%	119	93	78%
SAGINAW	1,186	951	80%	1,240	1,071	86%
SAINT CLAIR	792	536	68%	793	557	70%
SAINT JOSEPH	396	249	63%	427	323	76%
SANILAC	236	175	74%	208	166	80%
SCHOOLCRAFT	32	26	81%	35	34	97%
SHIAWASSEE	331	249	75%	338	280	83%
TUSCOLA	261	222	85%	271	228	84%
VAN BUREN	486	295	61%	471	340	72%
WASHTENAW	1,093	634	58%	1,022	697	68%
DETROIT, CITY OF	8,904	6,264	70%	8,700	7,044	81%
WAYNE, ex Detroit	4,259	2,733	64%	4,288	3,173	74%
WEXFORD	176	130	74%	221	164	74%
MICHIGAN	48,971	34,823	71%	49,032	38,077	78%

**Table 6. Statewide Blood Lead Testing of Two and Three Year Old Children Eligible for Medicaid Only Fee-for-Service Coverage
April 2012**

County	2 Years of Age			3 Years of Age		
	Eligibles	Eligibles with at least 1 test on or before their 2nd birthday	Percent of Eligibles with at least 1 test on or before their 2nd birthday	Eligibles	Eligibles with at least 1 test on or before their 3rd birthday	Percent of Eligibles with at least 1 test on or before their 3rd birthday
ALCONA	3	1	33%	6	5	83%
ALGER	9	9	100%	9	8	89%
ALLEGAN	123	56	46%	133	66	50%
ALPENA	12	6	50%	20	13	65%
ANTRIM	19	14	74%	21	13	62%
ARENAC	10	9	90%	16	13	81%
BARAGA	12	9	75%	19	18	95%
BARRY	76	42	55%	105	72	69%
BAY	69	56	81%	70	58	83%
BENZIE	21	15	71%	15	12	80%
BERRIEN	114	65	57%	135	84	62%
BRANCH	39	20	51%	44	29	66%
CALHOUN	153	104	68%	151	107	71%
CASS	53	31	58%	44	26	59%
CHARLEVOIX	31	22	71%	32	21	66%
CHEBOYGAN	34	25	74%	46	31	67%
CHIPPEWA	79	62	78%	83	70	84%
CLARE	21	9	43%	33	25	76%
CLINTON	37	25	68%	43	34	79%
CRAWFORD	14	8	57%	13	5	38%
DELTA	33	25	76%	34	27	79%
DICKINSON	28	20	71%	14	6	43%
EATON	80	50	63%	69	49	71%
EMMET	36	21	58%	33	25	76%
GENESEE	289	168	58%	321	188	59%
GLADWIN	16	13	81%	17	14	82%
GOGEBIC	8	6	75%	16	12	75%
GRAND TRAVERSE	71	30	42%	62	38	61%
GRATIOT	31	18	58%	46	24	52%
HILLSDALE	46	30	65%	46	30	65%
HOUGHTON	22	12	55%	28	21	75%
HURON	32	24	75%	30	26	87%
INGHAM	196	132	67%	189	145	77%
IONIA	51	35	69%	80	54	68%
IOSCO	11	8	73%	15	8	53%
IRON	6	5	83%	9	7	78%
ISABELLA	52	25	48%	56	26	46%
JACKSON	147	99	67%	147	114	78%
KALAMAZOO	193	135	70%	185	136	74%
KALKASKA	18	11	61%	13	5	38%
KENT	597	436	73%	611	455	74%
KEWEENAW	0	0	NA	1	0	0%

County	2 Years of Age			3 Years of Age		
	Eligibles	Eligibles with at least 1 test on or before their 2nd birthday	Percent of Eligibles with at least 1 test on or before their 2nd birthday	Eligibles	Eligibles with at least 1 test on or before their 3rd birthday	Percent of Eligibles with at least 1 test on or before their 3rd birthday
LAKE	4	2	50%	10	10	100%
LAPEER	62	29	47%	64	31	48%
LEELANAU	16	11	69%	19	12	63%
LENAWEE	95	65	68%	102	78	76%
LIVINGSTON	74	47	64%	86	54	63%
LUCE	9	9	100%	8	7	88%
MACKINAC	12	10	83%	18	16	89%
MACOMB	480	230	48%	502	274	55%
MANISTEE	34	28	82%	21	16	76%
MARQUETTE	35	22	63%	34	26	76%
MASON	20	18	90%	26	21	81%
MECOSTA	32	17	53%	29	20	69%
MENOMINEE	25	23	92%	40	29	73%
MIDLAND	59	31	53%	59	39	66%
MISSAUKEE	12	8	67%	18	8	44%
MONROE	129	90	70%	114	83	73%
MONTCALM	76	39	51%	62	43	69%
MONTMORENCY	4	3	75%	6	5	83%
MUSKEGON	159	90	57%	215	152	71%
NEWAYGO	61	41	67%	50	34	68%
OAKLAND	528	323	61%	554	354	64%
OCEANA	38	26	68%	36	24	67%
OGEMAW	22	16	73%	20	17	85%
ONTONAGON	3	2	67%	3	3	100%
OSCEOLA	31	20	65%	26	16	62%
OSCODA	5	2	40%	6	4	67%
OTSEGO	25	12	48%	22	10	45%
OTTAWA	271	148	55%	260	137	53%
PRESQUE ISLE	7	3	43%	6	5	83%
ROSCOMMON	13	11	85%	24	22	92%
SAGINAW	169	115	68%	152	121	80%
SAINT CLAIR	109	48	44%	134	73	54%
SAINT JOSEPH	75	38	51%	77	53	69%
SANILAC	38	20	53%	26	14	54%
SCHOOLCRAFT	9	9	100%	7	5	71%
SHIAWASSEE	48	24	50%	46	31	67%
TUSCOLA	36	23	64%	46	33	72%
VAN BUREN	73	39	53%	85	48	56%
WASHTENAW	213	117	55%	172	84	49%
DETROIT, CITY OF	978	612	63%	915	680	74%
WAYNE, ex Detroit	639	380	59%	669	405	61%
WEXFORD	62	41	66%	65	44	68%
MICHIGAN	7,682	4,733	62%	7,894	5,261	67%

Table 7: Blood Lead Testing of Two Year Old Children by Length of Enrollment
April 2012

Health Plan Name	Total Enrollment			Continuous Enrollment			
	Eligibles	Eligibles with at least 1 test on or before their 2nd birthday	Percent of Eligibles with at least 1 test on or before their 2nd birthday	Eligibles	Eligibles with at least 1 test on or before their 2nd birthday	Percent of Eligibles with at least 1 test on or before their 2nd birthday	Percentage Point Difference with Continuous Enrollment
BlueCaid	755	500	66%	435	312	72%	5
Care Source	1,337	974	73%	745	573	77%	4
Great Lakes Health Plan	9,715	7,074	73%	5,995	4,698	78%	6
Health Plan of MI	12,661	9,110	72%	7,349	5,888	80%	8
HealthPlus Partners	2,484	1,865	75%	1,732	1,391	80%	5
McLaren Health Plan	3,289	2,410	73%	1,995	1,601	80%	7
Midwest Health Plan	2,708	1,634	60%	1,492	996	67%	6
Molina Healthcare of Michigan	8,118	5,781	71%	5,295	3,983	75%	4
OmniCare	1,429	989	69%	979	717	73%	4
PHP of Mid Michigan Family Care	763	587	77%	455	378	83%	6
Priority Health Government Programs	2,649	1,849	70%	1,499	1,132	76%	6
Procure Health Plan	225	112	50%	95	46	48%	-1
Total Health Care	1,682	1,011	60%	1,007	669	66%	6
Upper Peninsula Health Plan	1,205	954	79%	797	702	88%	9
Managed Care Totals/Percent	49,020	34,850	71%	29,870	23,086	77%	6
Current Performance Monitoring Standard			N/A			80%	
FFS (Title XIX only)	7,705	4,741	62%	1,407	973	69%	7
FFS (Title V/XIX)	1,058	735	69%	-328	-241	73%	4
FFS Totals (Title XIX & V/XIX)	8,763	5,476	62%	1,079	732	68%	6

Total Enrollment

- Based on MMIS eligibility system
- Enrolled in plan (health plan or FFS) for the measurement month

Continuous Enrollment

- Based on MMIS eligibility system
- Enrolled in same plan (health plan or FFS) for the measurement month and 12 months preceding 2nd birthday, with 1-month allowable gap

Table 8. Blood Lead Testing of Three Year Old Children by Length of Enrollment
April 2012

Health Plan Name	Total Enrollment			Continuous Enrollment			
	Eligibles	Eligibles with at least 1 test on or before their 3rd birthday	Percent of Eligibles with at least 1 test on or before their 3rd birthday	Eligibles	Eligibles with at least 1 test on or before their 3rd birthday	Percent of Eligibles with at least 1 test on or before their 3rd birthday	Percentage Point Difference with Continuous Enrollment
BlueCaid	795	531	67%	534	390	73%	6
Care Source	1,280	987	77%	777	640	82%	5
Great Lakes Health Plan	9,555	7,556	79%	6,198	5,220	84%	5
Health Plan of MI	12,261	9,435	77%	7,509	6,297	84%	7
HealthPlus Partners	2,733	2,178	80%	2,013	1,680	83%	3
McLaren Health Plan	3,235	2,474	76%	2,060	1,680	82%	6
Midwest Health Plan	2,728	2,023	74%	1,665	1,331	80%	6
Molina Healthcare of Michigan	8,364	6,660	80%	5,839	4,860	83%	3
OmniCare	1,423	1,142	80%	1,014	838	83%	3
PHP of Mid Michigan Family Care	756	643	85%	493	450	91%	6
Priority Health Government Programs	2,790	2,080	75%	1,703	1,360	80%	5
Procure Health Plan	156	104	67%	73	50	68%	1
Total Health Care	1,792	1,290	72%	1,100	858	78%	6
Upper Peninsula Health Plan	1,207	1,002	83%	831	742	89%	6
Managed Care Totals/Percent	49,075	38,105	78%	31,809	26,396	83%	5
FFS (Title XIX only)	7,932	5,281	67%	1,933	1,433	74%	7
FFS (Title V/XIX)	1,081	834	77%	834	653	78%	1
FFS Totals (Title XIX & V/XIX)	9,013	6,115	68%	2,767	2,086	75%	7

Total Enrollment

- Based on MMIS eligibility system
- Enrolled in plan (health plan or FFS) for the measurement month

Continuous Enrollment

- Based on MMIS eligibility system
- Enrolled in same plan (health plan or FFS) for the measurement month and 12 months preceding 3rd birthday, with 1-month allowable gap