

Cryptosporidiosis Tip Sheet for Local Health Departments

Michigan Department of Health & Human Services

Reporting and Case Classification

- Infection with any *Cryptosporidium* species is a reportable condition in Michigan
- Outbreaks should be reported immediately to MDHHS at 517-335-8165
- Information regarding the clinical presentation and laboratory testing results are necessary to correctly classify cases
- Please see the attached “Algorithm for Classifying Cryptosporidiosis Cases” for instructions on correctly classifying cases in MDSS

Laboratory Testing

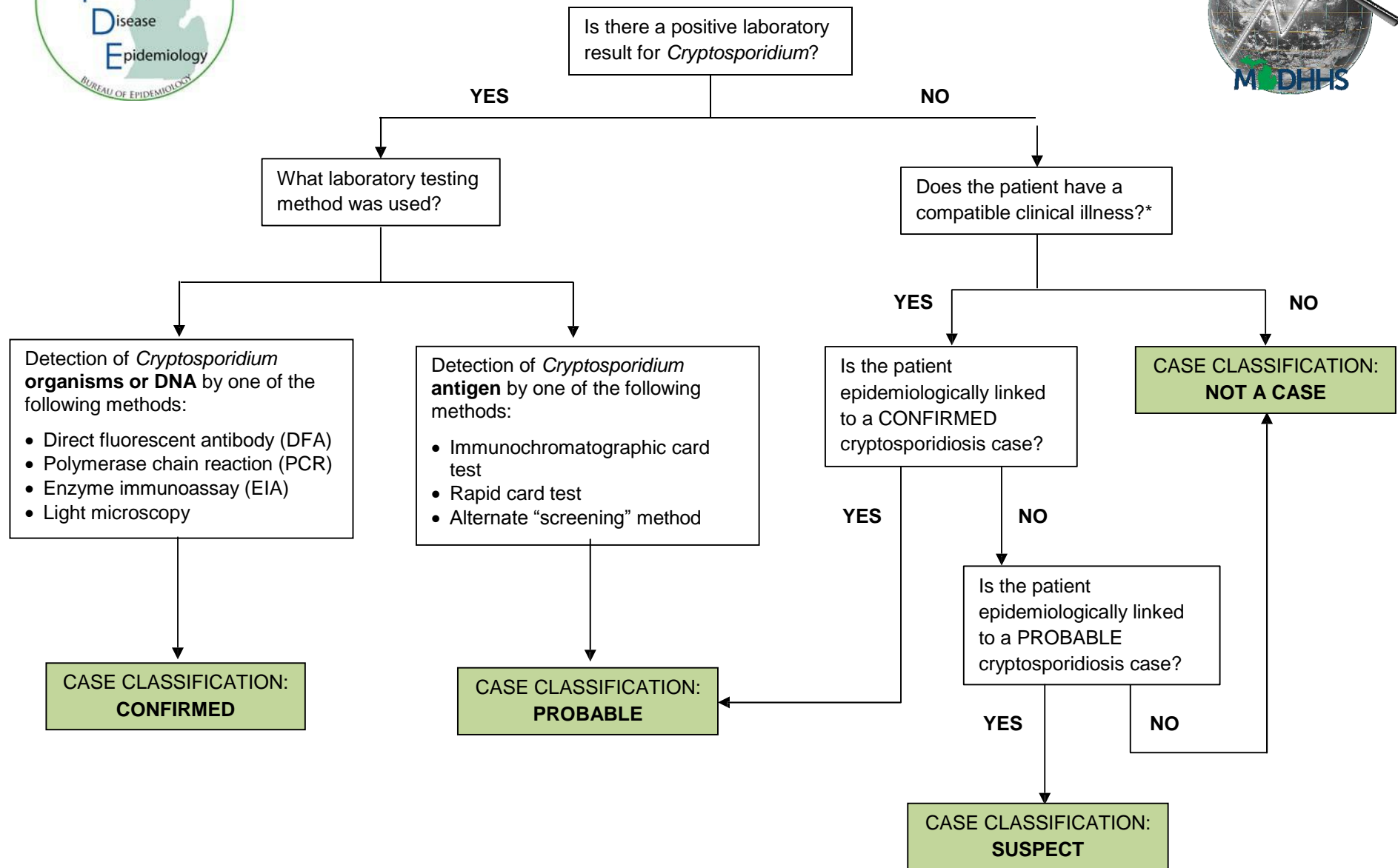
- Laboratory testing for *Cryptosporidium* is often not included with a standard O&P parasite exam of the stool and may need to be specifically requested
- Testing for *Cryptosporidium* is available at MDHHS Bureau of Laboratories:
 - Stool specimens must be submitted in two separate containers: one with formalin preservative and one with PVA-Zinc preservative
 - Specimens should be stored at room temperature
 - *Cryptosporidium* testing must be specifically requested on the test request form
 - MDHHS will only accept routine specimens for O&P examination from local health departments. Outbreak specimens will need prior MDHHS approval.
 - Clinical labs may submit positive specimens for confirmation.
- Testing for *Cryptosporidium* in human, environmental and animal specimens related to outbreaks of human illness is available on a case-by-case basis through the CDC:
 - Pre-approval **must** be obtained from MDHHS Division of Communicable Disease (phone: 517-335-8165)
 - In order to perform strain matching on human and environmental/animal specimens, human specimens must be stored in Cary-Blair media

Additional Resources

- MDHHS Division of Communicable Disease at 517-335-8165
- MDHHS Bureau of Laboratories testing information: go to the following website http://www.michigan.gov/mdhhs/0,5885,7-339-71551_2945_5103_26138-15179-,-00.html and click on “Parasitology Examination (Intestinal)”
- CDC’s *Cryptosporidium* website: <http://www.cdc.gov/parasites/crypto/>



Algorithm for Classifying Cryptosporidiosis Cases



*Clinical definition: A gastrointestinal illness characterized by diarrhea and one or more of the following: diarrhea duration of 72 hours or more, abdominal cramping, vomiting or anorexia.