



Former Mount Clemens Landfill Site

Fall 2011 Update

Michigan Department
of Community Health



Background

In April 2011, the Michigan Department of Community Health (MDCH) and the City of Mount Clemens distributed a fact sheet about the former Mount Clemens landfill. This fact sheet is an update of that fact sheet explaining current activities.

The Mount Clemens Landfill was operated from 1940 to 1965. It is no longer active and has been closed for many years.

Since that time, several housing complexes have been built above or next to the landfill, including Park Place Towers, Clinton Place Apartments, Sunset Manor and Holiday Gardens.

What is methane gas?

Methane gas is one of several gases that comes from landfills as waste breaks down. It is colorless and odorless. If enough methane is in the air, it can cause an explosion or fire.

Methane can enter indoors through very small cracks in a building's foundation. Therefore, it is important that any methane gas is controlled.

The City of Mount Clemens has been monitoring levels of methane, an explosive gas, underground. The city has found a way to control the landfill gases and vent it safely to ensure people living in the area stay safe.



What's been done?

The City of Mount Clemens conducted a pilot study to test a way to actively ventilate the landfill site. Active ventilation pulls methane out of the landfill, preventing it from potentially gathering under the surrounding buildings.



Based on the success of the pilot study, a system to actively ventilate the landfill site was designed by an environmental engineering firm. The city requested assistance from the United States Environmental Protection Agency (U.S. EPA) to construct and install the system.

What's happening now?

The city is partnering with U.S. EPA Region 5 Chicago Office to install the system by the end of the year.

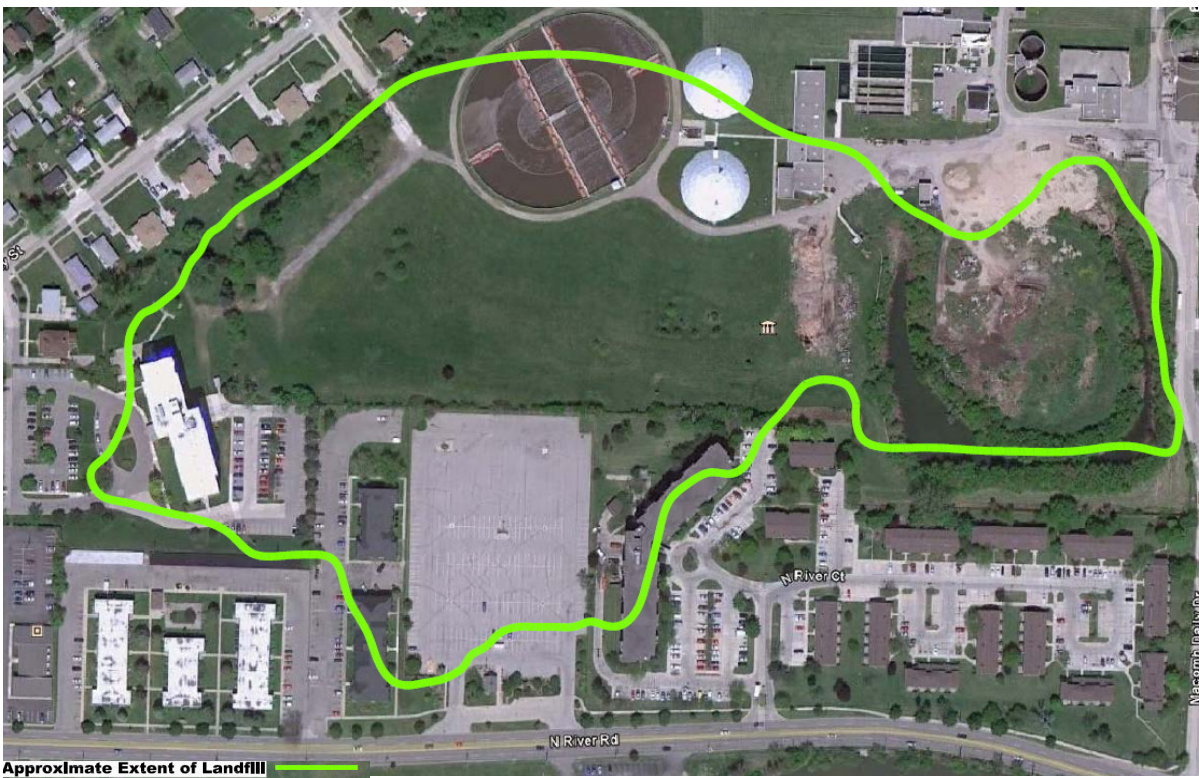
Contractors will drill at certain locations to catch landfill gas and pipe it underground to one of two flaring stations to be located atop the landfill. Two metal sheds will house blowers and control equipment to send the gas into solar-powered flares which will burn off the gas safely and effectively. It is not expected that the flares will operate all the time.



There might be odors during construction, but no odors are expected once construction is done.

The city continues to monitor for other possible landfill gases.

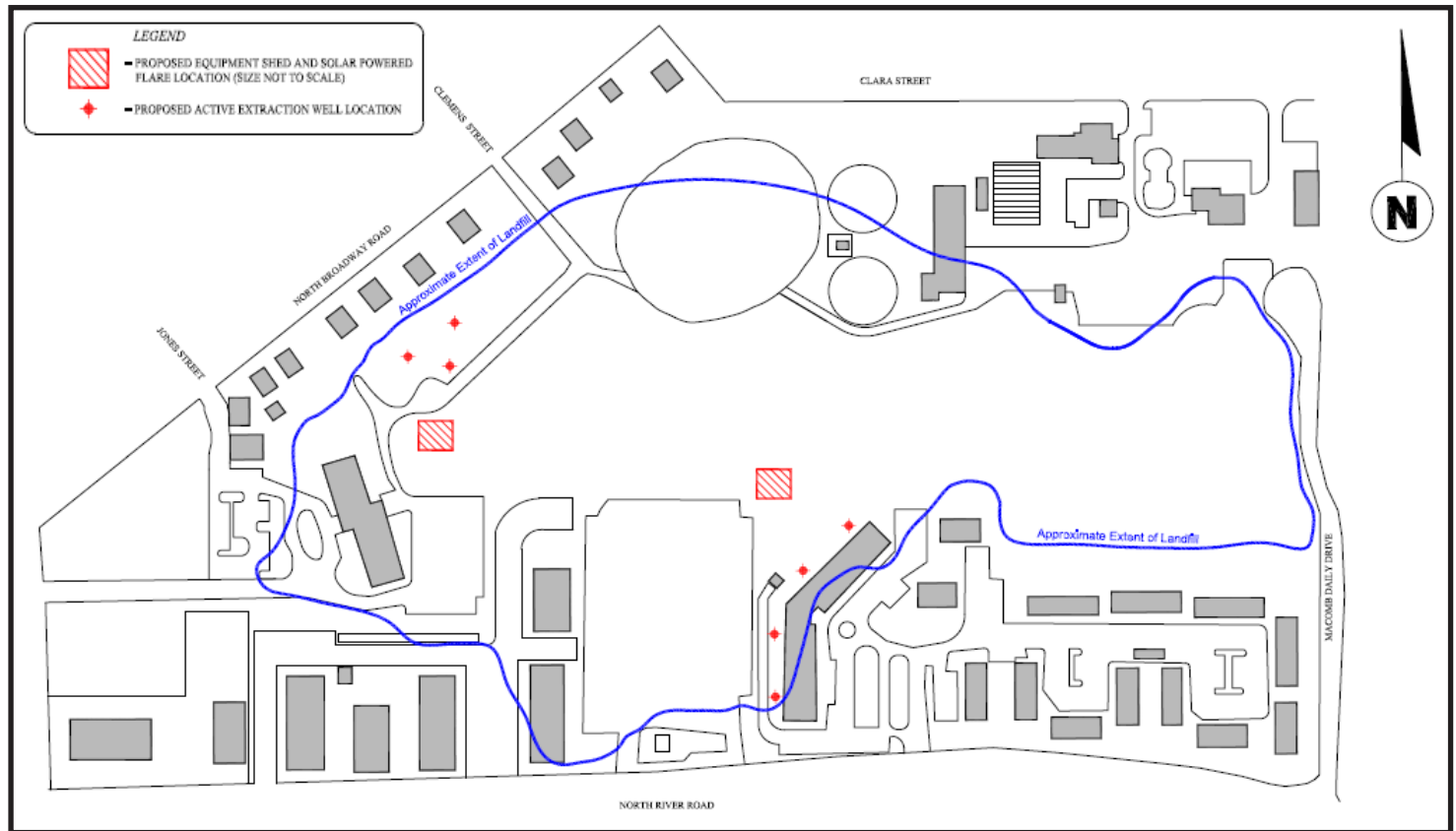
For the locations of the flares, sheds and extraction well locations see the maps on the back page.



Maps prepared by:

AKTPEERLESS
 environmental & energy services
 CHICAGO DETROIT FARMINGTON LANSING SAGINAW
 www.aktpeerless.com

Approximate Extent of Landfill



Who to call

For more information about the Mount Clemens Landfill Project, contact Jeff Wood at the City of Mount Clemens at 586-469-6818.

For information about landfill gases and methane hazards, contact the Michigan Department of Community Health (MDCH) at 1-800-MI-TOXIC (1-800-648-6942) or visit www.michigan.gov/mdch-toxic and look for the Mount Clemens Landfill link under Health Assessments and Related Documents.

To learn more about the Mount Clemens Landfill Project active ventilation installation and updates, visit www.epaos.org/formermountclemenslandfill.