

**Module #1:
Emergency Medical Services
Overview**



EMS Overview

Objective: Describe the EMS MD's and other health care providers' roles in the process of EMS systems medical oversight.



EMS System

- EMS system means a comprehensive and integrated arrangement of the personnel, facilities, equipment, services, communications, medical control, and organizations necessary to provide emergency medical services and trauma care within a particular geographic area.



EMS

- EMS is defined to mean the emergency medical services personnel, ambulances, non-transport prehospital life support vehicles, aircraft transport vehicles, medical first response vehicles, and equipment required for transport or treatment of an individual requiring medical first response life support, basic life support, limited advanced life support, or advanced life support.

EMS

- EMS is the provision of medical care in the out-of-hospital setting by trained personnel extenders functioning under the supervision of the physician medical director.





Medical Director

- Medical Director is appointed by the Medical Control Authority with the advice of the advisory body.
- Medical Director is a physician who is board certified in emergency medicine or who practices emergency medicine and has successfully completed and is current in both ACLS and ATLS.

Medical Director

- Medical Director is the physician who has primary responsibility and authority to provide medical oversight for all aspects of EMS in an effort to assure its quality of patient care.
- The medical director is an agent of the medical control authority and is responsible for medical control for the EMS system served by the medical control authority. MCL 333.20918





Medical Control

- “Medical control” means supervising and coordinating emergency medical services through a medical control authority, as prescribed, adopted, and enforced through department-approved protocols, within an emergency medical services system.

Supervision

- Supervision



It is often misstated that EMTs function under the license of the physician MD.

Actually, the EMT's are functioning under the supervision of the physician Medical Director.

Responsibilities



□ Responsibilities

- The MD shall ensure the provision of medical control.
- The MD signature on a life support agency's application for licensure affirms that the MCA intends to provide medical control to that agency.

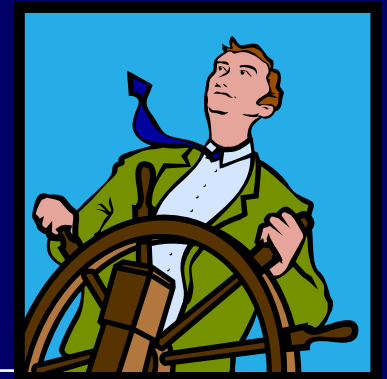
The MD may be responsible for:

- A specific agency
- An entire EMS system with multiple agencies
- An educational program

Leadership

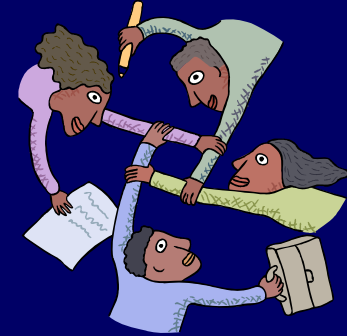
□ Medical Leadership

It is highly recommended that a single MD serve as the focal point for medical leadership of the organization. This individual sets the standards and tone for the agency or system as it relates to patient care activities.





Collaboration



The MD works in collaboration with others in the agency or system (a cooperative interaction). Many others actively participate in this collaboration,

Including:

- Nurses
- Nurse Practitioners
- Physician Assistants
- EMS personnel (educators, supervisors, etc.)
- Emergency Management personnel

Additional Input

- Many physician specialties must be available as resources to provide input into the EMS system for the system to function effectively,

Including:

- Emergency Medicine
- Trauma Surgery
- Cardiology
- Pediatrics
- Neurology
- Others based upon the setting and system resources available



Liaison

- The MD serves as the interface and liaison between the EMS system and the medical community in general.



EMS History

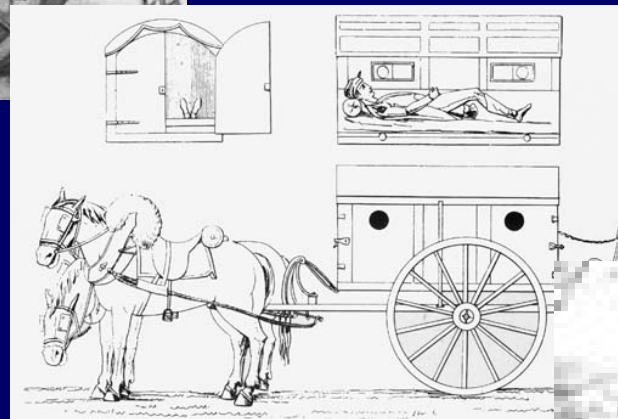


- 1500 B.C. Edwin Smith Papyrus
- Babylonian Code of Hammurabi
- Old Testament...Elisha
- Dr. Jean Dominique Larrey (Napoleon)
- Civil War (Barnes & Letterman)
- Clara Barton
- Civilian Ambulance (Edward Dalton)
- WW I Traction Splint (Thomas)
- Physician Interns to Mortuary Attendants

Les Ambulance Volantes



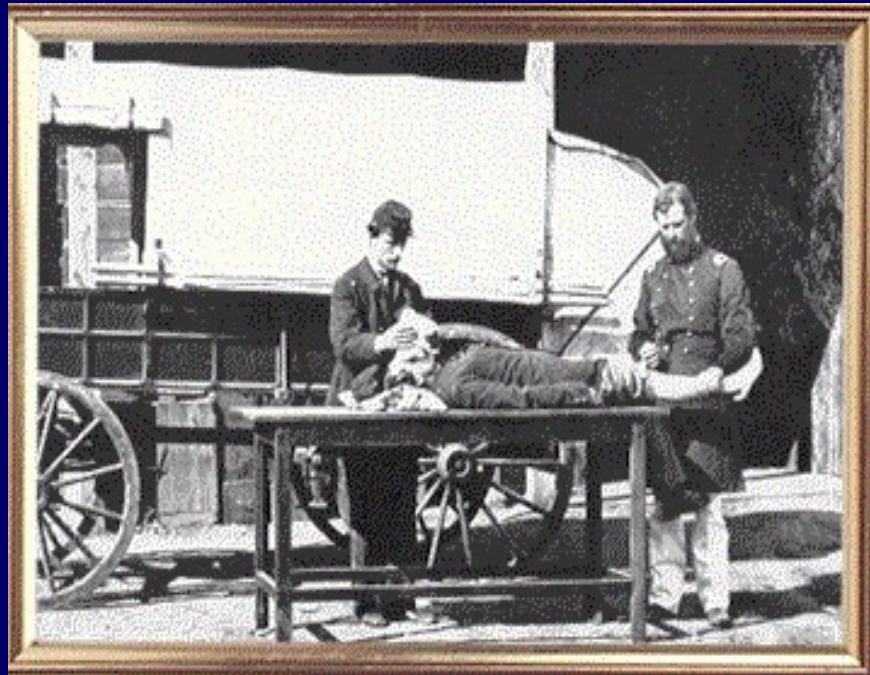
“The Flying Ambulance”



From Napoleon to Vietnam



Civil War Barnes and Letterman



Letterman Ambulance Plan

EMS History

- Modern History of EMS
 - Two epidemics
 - Cardiac Arrest
 - Major Highway Trauma
 - CPR
 - White Paper
 - Dr. Pantridge (Northern Ireland)



Evolution

□ *Emergency*



Paramedic pilot programs were started in the 60's with close medical oversight. Physicians served as mentors, educators, and leaders of the early systems. (Nagel, Warren, Rose, Criley)

Physician involvement wained during the 1970's and 1980's.

In the early 1990's that trend began to reverse with the inception of Medical Control Authorities.



Legislation



□ Federal Government Leadership

- Emergency Medical Services Act of 1973 (Public Law 154)
 - *First National Initiative on EMS*
 - *Defined 15 Components of an EMS system*
 - *Lead to the development of DOT national curriculum*
 - *Established the Dept of Health Human Services EMS office (\$\$\$)*
 - *No provision for Medical Control*
 - *Public Law 154 renewed and amended in 1976 and 1979*
 - *Structured federal funding for EMS ended in 1981*

1973 EMS ACT SYSTEMS COMPONENTS

- Manpower
- Training
- Communication
- Transportation
- Emergency Facilities
- Critical Care Units
- Consumer Participation
- Access to Care
- Patient Transfers
- Standardized Record Keeping
- Public Information and Education
- System Review and Evaluation
- Disaster Planning
- Mutual Aid
- Public Safety Agencies

MEDICAL DIRECTION???



NHTSA

- National Highway Safety Traffic Administration
 - Promotion
 - Development
 - Research



Standardized Curricula

- The DOT established national standards for EMT-Basic, EMT-Intermediate, EMT-Paramedic, and medical direction.
- Current Efforts
 - New standard curricula and scope of practice have been released
 - EMS education interface with managed care organizations
 - EMS Research
 - EMS Public Health initiative



EMS Agenda for the Future

- ❑ Created a list of 14 attributes
- ❑ EMS MD's should be familiar with the agenda (*next slide)
- ❑ EMS Agenda Implementation Guide
- ❑ EMS Education Agenda
- ❑ EMS Research Agenda



EMS Agenda for the Future

- Integration of Health Services
- EMS Research
- Legislation and Regulation
- System Finance
- Human Resource
- Medical Direction
- Education Systems
- Public Education
- Prevention
- Public Access
- Communications Systems
- Clinical Care
- Information Systems
- Evaluation



Summary

- ❑ Medical Directors are critical components of the EMS System.
- ❑ Medical Directors are leaders, resources, and advocates for the system.
- ❑ Resources available
- ❑ QUESTIONS?