



Former Mount Clemens Landfill Site

Michigan Department
of Community Health



Introduction

The Mount Clemens Landfill was operated from 1940 to 1965. It is no longer active and has been closed for many years.

Since that time, several housing complexes have been built above or next to the landfill, including Park Place Towers, Clinton Place Apartments, Sunset Manor and Holiday Gardens.

As landfill waste breaks down, gases can form. The City of Mount Clemens has been monitoring levels of methane, an explosive gas, underground. The city is working to find ways to control the landfill gases and vent it safely to ensure people living in the area stay safe.

Several state and federal agencies are also involved and providing assistance to the city in its work.

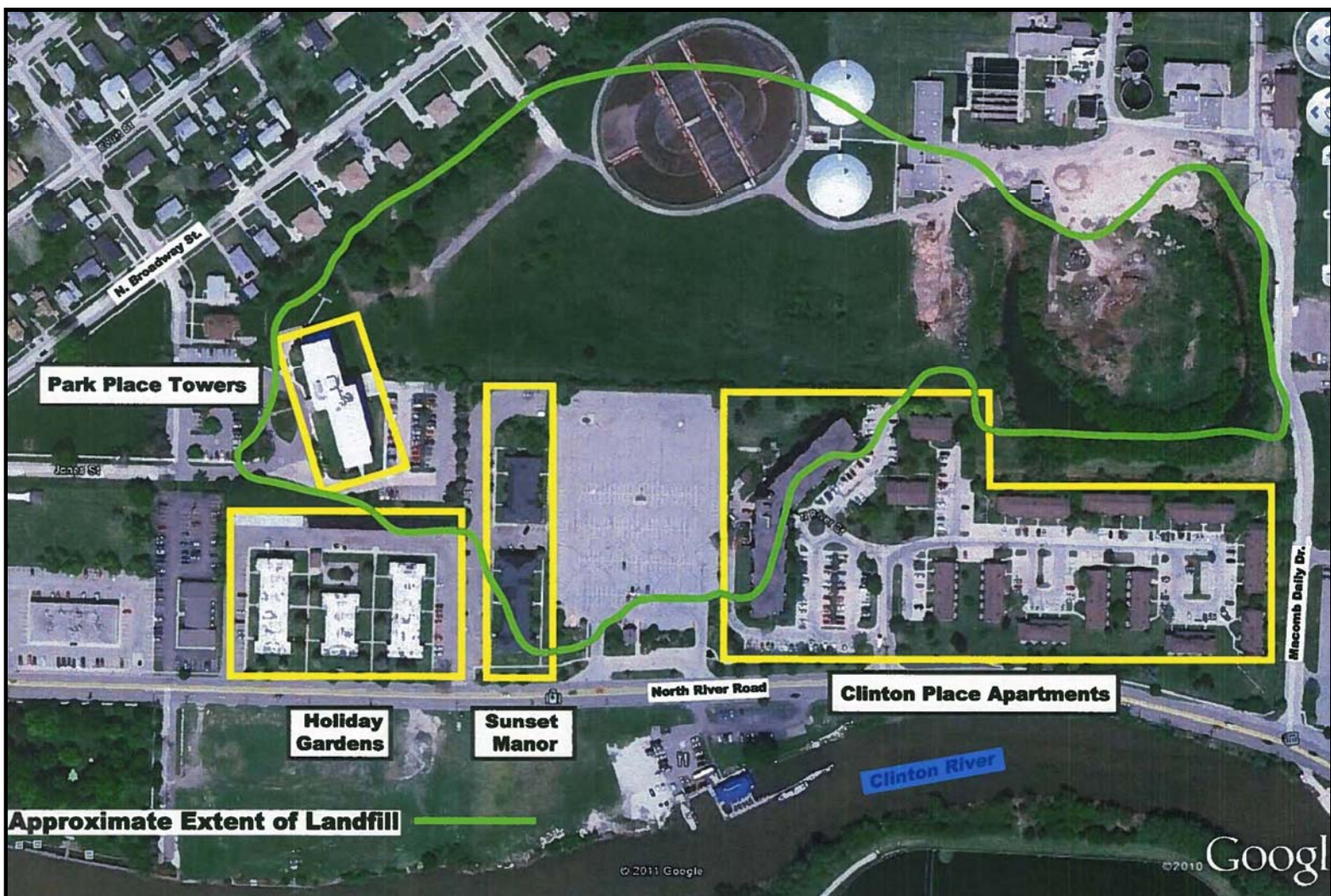
Landfill Gas

Methane is one of several gases that comes from landfills as waste breaks down. It is colorless and odorless. If enough methane is in the air, it can cause an explosion or fire.



Landfills similar to the one in Mount Clemens usually contain methane, carbon dioxide and a small percentage of other gases.

Some gases may have odors. You might not be able to smell them unless there is a lot in the air.



Why the interest in the Mount Clemens Landfill?

Methane can enter indoors through very small cracks in a building's foundation. We need to know how the methane is moving underground before we know if it could enter nearby buildings. Because methane can cause explosions, it is important that any methane gas is detected and controlled.

Methane detectors are in place in the buildings near the landfill continuously monitoring for methane gas. While the methane detectors have not shown any elevated levels of concern for methane, more information is needed about other landfill gases that may be in the air.

What's been done?

The City of Mount Clemens has conducted a pilot study to test a way to actively ventilate the landfill site. Active ventilation would pull methane out of the landfill, preventing it from potentially gathering under the surrounding buildings.

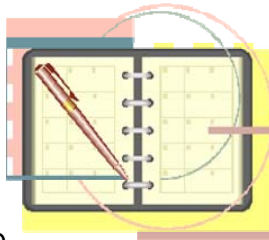


Who is involved?

- City of Mount Clemens
- Environmental consultants
- Building owners and management of apartment complexes
- Mount Clemens Fire Department
- Macomb County Health Department (MCHD)
- Michigan Department of Community Health (MDCH)
- Agency for Toxic Substances and Disease Registry (ATSDR)
- Michigan Department of Environmental Quality (MDEQ)
- Michigan State Housing Development Authority (MSHDA)
- Department of Housing and Urban Development (HUD)

What's happening now?

The city is moving forward with a design for active landfill ventilation. Additional sampling and monitoring is being done by the city to gather more information on the levels, or concentrations, of other possible landfill gases that may be coming indoors.



Why are so many people involved?

People at the federal, state and local levels are working together to prevent methane buildup and to keep you safe. Everyone involved has a specific role to make sure your health and property are protected.

Who to Call

For more information about the Mount Clemens Landfill Investigation status, contact Jeff Wood at the City of Mount Clemens at 586-469-6818.

For general questions about landfill gases and methane hazards, contact the Michigan Department of Community Health (MDCH) at 1-800-MI-TOXIC (1-800-648-6942) or visit www.michigan.gov/mdch-toxics.