

Disproportionate Representation and Significant Disproportionality



Julie Trevino
Eleanor E. White, Ph.D.
Office of Special Education and
Early Intervention Services

Essential Questions

- What is Disproportionate Representation?
- What is Significant Disproportionality?
- What is the difference between Disproportionate Representation and Significant Disproportionality?
- What are the obligations of LEAs, once identified with Disproportionate Representation or Significant Disproportionality?

Disproportionate Representation

Disproportionate representation refers to both “over-representation” and “under-representation” of specific demographic groups of students in special education or related services or programs that is the result of inappropriate identification.

Disproportionate Representation

- State Performance Plan Indicator 9
Racial and ethnic over or under representation in special education due to inappropriate identification practices
- State Performance Plan Indicator 10
Racial and ethnic over or under representation in specific disability categories in special education due to inappropriate identification practices

Disproportionate Representation

- African American
- American Indian
- Asian
- Hispanic
- White

February 10, 2010

Disproportionate Representation

- Autism Spectrum Disorder
- Cognitive Impairment
- Emotional Impairment
- Other Health Impairment
- Specific Learning Disability
- Speech & Language Impairment

Disproportionate Representation

Data Sources:

2008-09 submission of data

- Single Record Student Database (SRSD)
- Michigan Compliance Information System (MI-CIS)

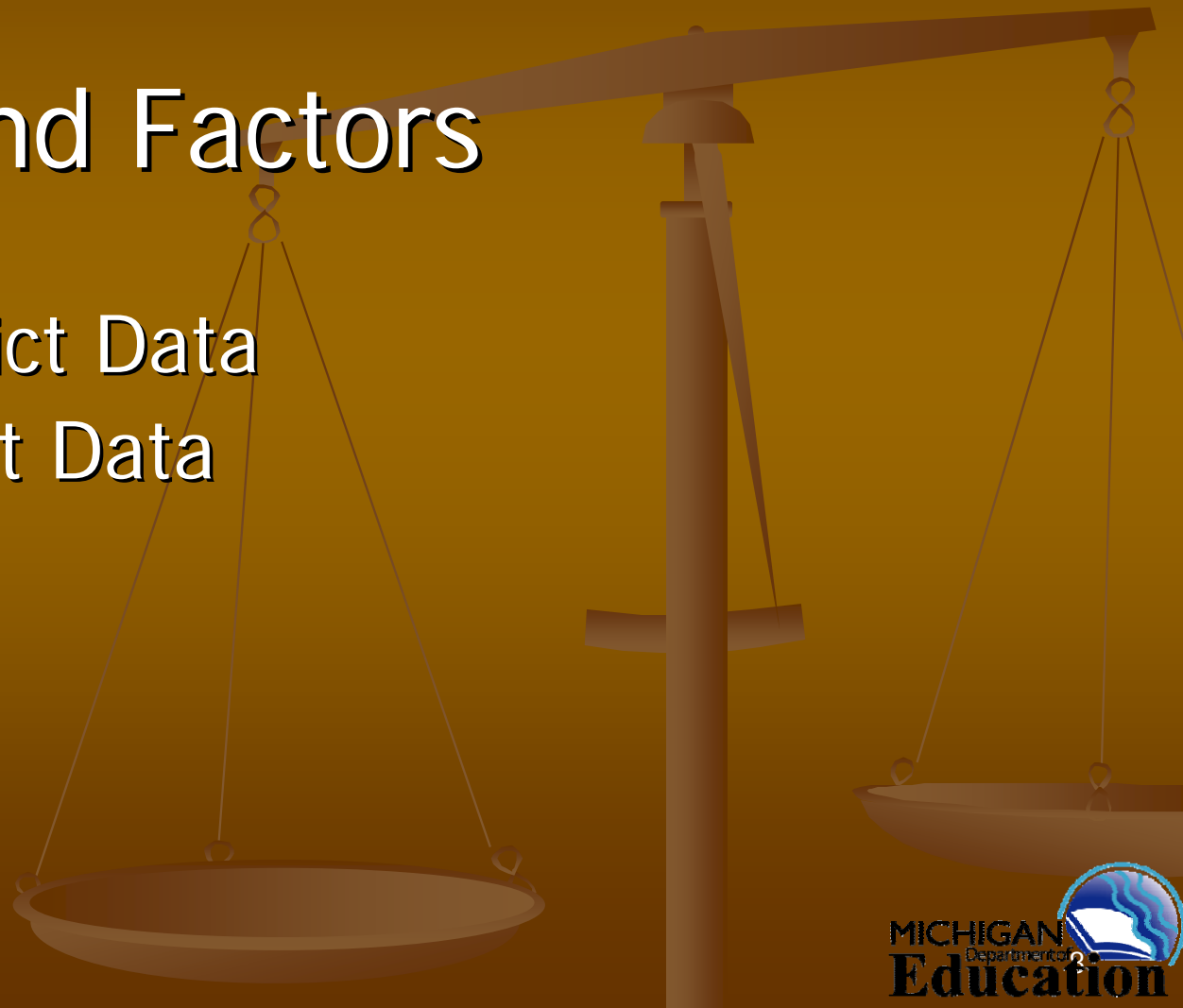
2009-10 submission of data

- Michigan Student Data System (MSDS)
- Michigan Compliance Information System (MI-CIS)

Disproportionate Representation

Calculations and Factors

- Operating District Data
- Resident District Data
- Risk Ratios



February 10, 2010

Disproportionate Representation

A Weighted Risk Ratio (WRR) is used to determine disproportionate representation for a particular racial/ethnic subgroup when there are at least 10 students with disabilities in all other racial/ethnic subgroups (disability comparison group).

Disproportionate Representation

An Alternate Risk Ratio (ARR) is used to determine disproportionate representation for a particular racial/ethnic subgroup when there are fewer than 10 students with disabilities in all other racial/ethnic subgroups (disability comparison group).

Disproportionate Representation

A Risk Ratio (RR) is used to determine disproportionate representation for a particular racial/ethnic subgroup when there are zero African American or White students with disabilities in the district.

Disproportionate Representation

Weighted /Alternate or Risk Ratio for
over-representation > 2.5

Weighted /Alternate or Risk Ratio for
under-representation $< .4$

Disproportionate Representation

- A site visit to your district by OSE-EIS staff and CIMS monitors to determine if there are inappropriate identification policies, procedures or practices
- If required, create and implement an improvement plan; monitored for evidence of change
- Participate in technical assistance

Disproportionate Representation

Overview

- Data can indicate disproportionate representation but findings for SPP 9 and SPP 10 are based on **inappropriate identification policies, practices or procedures.**
- Districts can be identified for either over and under representation
- Disproportionate Representation are compliance indicators and part of the Annual Performance Report

Resources

- Disproportionate Representation and Significant Disproportionality: Requirements in IDEA 2004

http://www.michigan.gov/documents/mde/DisproportionateRep_vs_SignificantDisproportionality_288539_7.pdf

- Business Rules/Procedures

http://www.michigan.gov/documents/mde/BusinessRulesforCalculatingDispro_244321_7.pdf

- FOCUS on Results: Understanding Disproportionate Representation and Significant Disproportionality

http://www.cenmi.org/Portals/0/FocusArticles/Volume7_Issue3_Article2.pdf

Julie Trevino

Data Analyst

trevinoj1@michigan.gov

517 241-0497

Eleanor E. White, Ph.D.

Assistant Director

(517) 241-4521

whitee1@michigan.gov

February 10, 2010