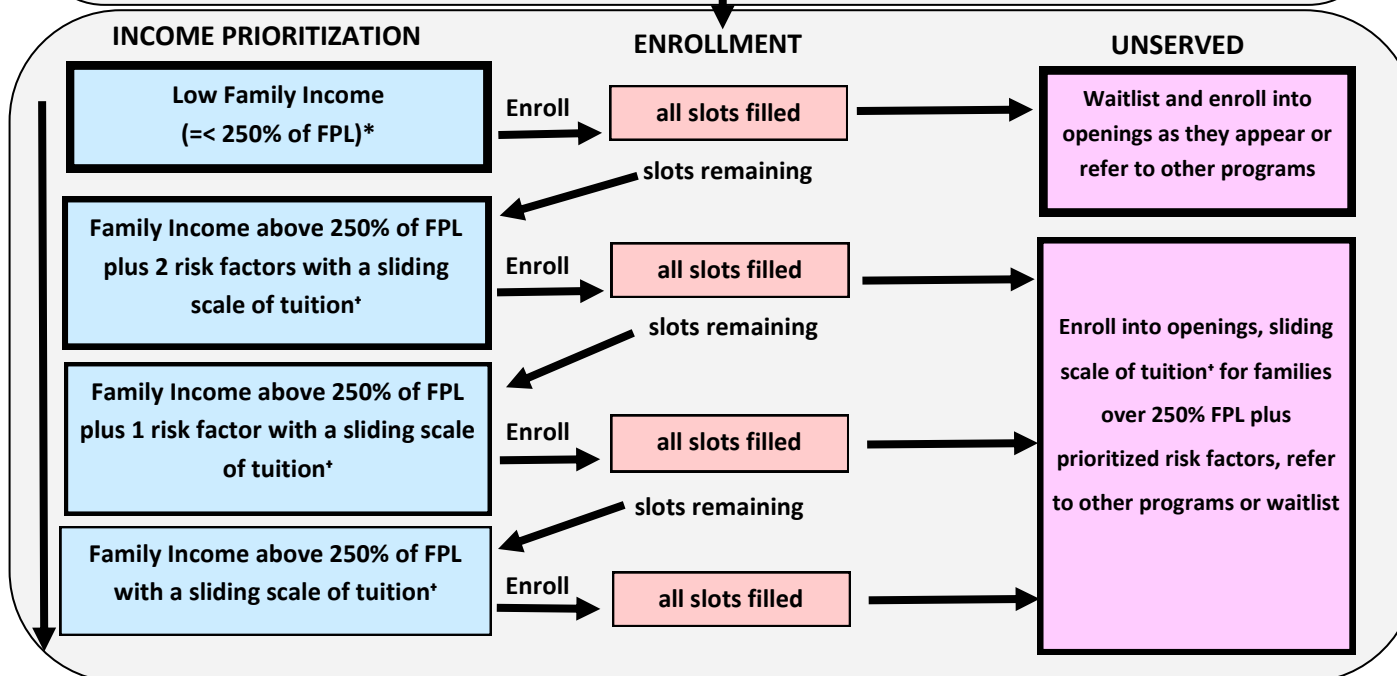
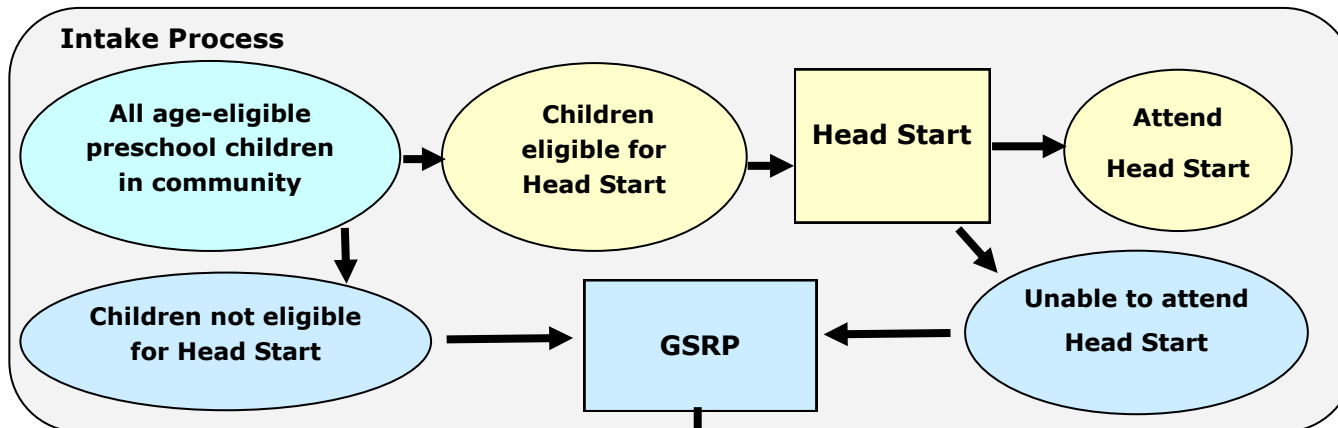


# Great Start Readiness Program

## Participant Eligibility and Prioritization Guidelines



### Eligibility and Enrollment



### Factors Contributing to Educational Risk

- Low Family Income (= < 250% of FPL)
- Diagnosed Disability or Identified Developmental Delay
- Severe or Challenging Behavior
- Primary Home Language Other than English
- Parent/s with Low Educational Attainment
- Abuse/Neglect of Child or Parent
- Environmental Risk

\*Each child's household income is ranked from lowest to highest and divided into quintiles based on how far child's household income is below 250% of FPL, and then enrolling children in the quintile with lowest household income before enrolling children in the quintile with the next lowest household income.

\*A maximum of 10% of enrolled children may be from families above 250% of FPL. These families must pay tuition calculated on a sliding scale based on family income. November 2013