

# SCHOOLS BEATING THE ODDS

April  
19  
2011

# Table of Contents with Hyperlinks

<a href="#"><u>Pasteur Elementary School, Detroit City School District</u></a>	<a href="#"><u>Glenwood Elementary, Kentwood Public Schools</u></a>
<a href="#"><u>Mt. Hope School, Lansing Public School District</u></a>	<a href="#"><u>Meyer Elementary School, Croswell-Lexington Community Schools</u></a>
<a href="#"><u>E.B. Holman Elementary School, Stanton Township Public Schools</u></a>	<a href="#"><u>Frankfort Elementary School, Frankfort-Elberta Area Schools</u></a>
<a href="#"><u>Detroit Service Learning Academy, Detroit</u></a>	<a href="#"><u>North Godwin Elementary School, Godwin Heights Public Schools</u></a>
<a href="#"><u>Grandville West Elementary School, Grandville Public Schools</u></a>	<a href="#"><u>Winn Elementary School, Shepherd Public School District</u></a>
<a href="#"><u>Benzie Central Sr. High School, Benzie County Central Schools</u></a>	<a href="#"><u>Brown Elementary School, Byron Center Public Schools</u></a>
<a href="#"><u>Cass City Middle School, Cass City Public Schools</u></a>	<a href="#"><u>Jeffers Elementary School, Spring Lake Public Schools</u></a>
<a href="#"><u>Martin Luther King, Jr. Education Center Academy, Detroit</u></a>	<a href="#"><u>Angell School, Ann Arbor Public Schools</u></a>
<a href="#"><u>Glen Lake Elementary, Glen Lake Community Schools</u></a>	<a href="#"><u>Saginaw Preparatory Academy, Saginaw</u></a>
<a href="#"><u>Deckerville Elementary School, Deckerville Community School District</u></a>	<a href="#"><u>Commonalities Among Self-Reported Success Factors</u></a>
<a href="#"><u>Gladys Dillon Elementary School, Carman-Ainsworth Community Schools</u></a>	<a href="#"><u>Description of the Methodology</u></a>

# IDENTIFYING SCHOOLS BEATING THE ODDS

- MDE developed two separate studies of schools Beating the Odds using considerably different methodologies. Second study designed with assistance from outside respected expert.
  1. Schools performing above their predicted levels based on risk factors.
  2. Schools performing above a comparison group of the most demographically similar schools in the state.

# RESULTS OF STUDY #1 AND STUDY #2

- Study #1
  - 63 schools identified as outperforming their predicted outcomes.
- Study #2
  - 72 schools identified as outperforming each of the 30 most demographically similar schools in state.
- Combined Results
  - 26 schools identified in both studies as meeting all criteria.

# SCHOOLS PROFILED

- Of the 26 schools identified in both studies as meeting all criteria.
  - 20 schools were interviewed by MDE staff and profiled in this document .
  - Schools include:
    - 18 Elementary Schools
    - 1 Middle School
    - 1 High School
  - 6 schools were not profiled because the school is a gifted and talented magnet school.

# Pasteur Elementary School Detroit City School District

Wayne RESA

## COMPARISON GROUP

- Large-city K-5 to K-8 elementary schools
- SFA of \$7,660
- Enrollment around 475
- Minority around 99%
- ED around 81%
- SWD around 21%
- LEP around 1%

Locale	Focal School	Comparison Group	
		Percent in each locale	
Large city	Yes	100%	
Midsize city			
Small city			
Suburb of large city			
Suburb of midsize city			
Suburb of small city			
Town on urban fringe			
Distant town			
Remote town			
Rural area on urban fringe			
Distant rural area			
Remote rural area			
Grade Configuration	Focal School	Comparison Group	
		Percent w/each grade	
Includes grade K	Yes	100%	
Includes grade 1	Yes	100%	
Includes grade 2	Yes	100%	
Includes grade 3	Yes	100%	
Includes grade 4	Yes	100%	
Includes grade 5	Yes	100%	
Includes grade 6	Yes	63%	
Includes grade 7		47%	
Includes grade 8		43%	
Includes grade 9			
Includes grade 10			
Includes grade 11			
Includes grade 12			
Other	Focal School	Comparison Group	
		Average	St. Dev.
State foundation allowance	\$7,660	\$7,660	\$0
Enrollment	357	464	139
% minority	100%	99%	1%
% economic disadvantage	79%	81%	6%
% students with disabilities	24%	21%	4%
% limited English proficient	0%	1%	2%

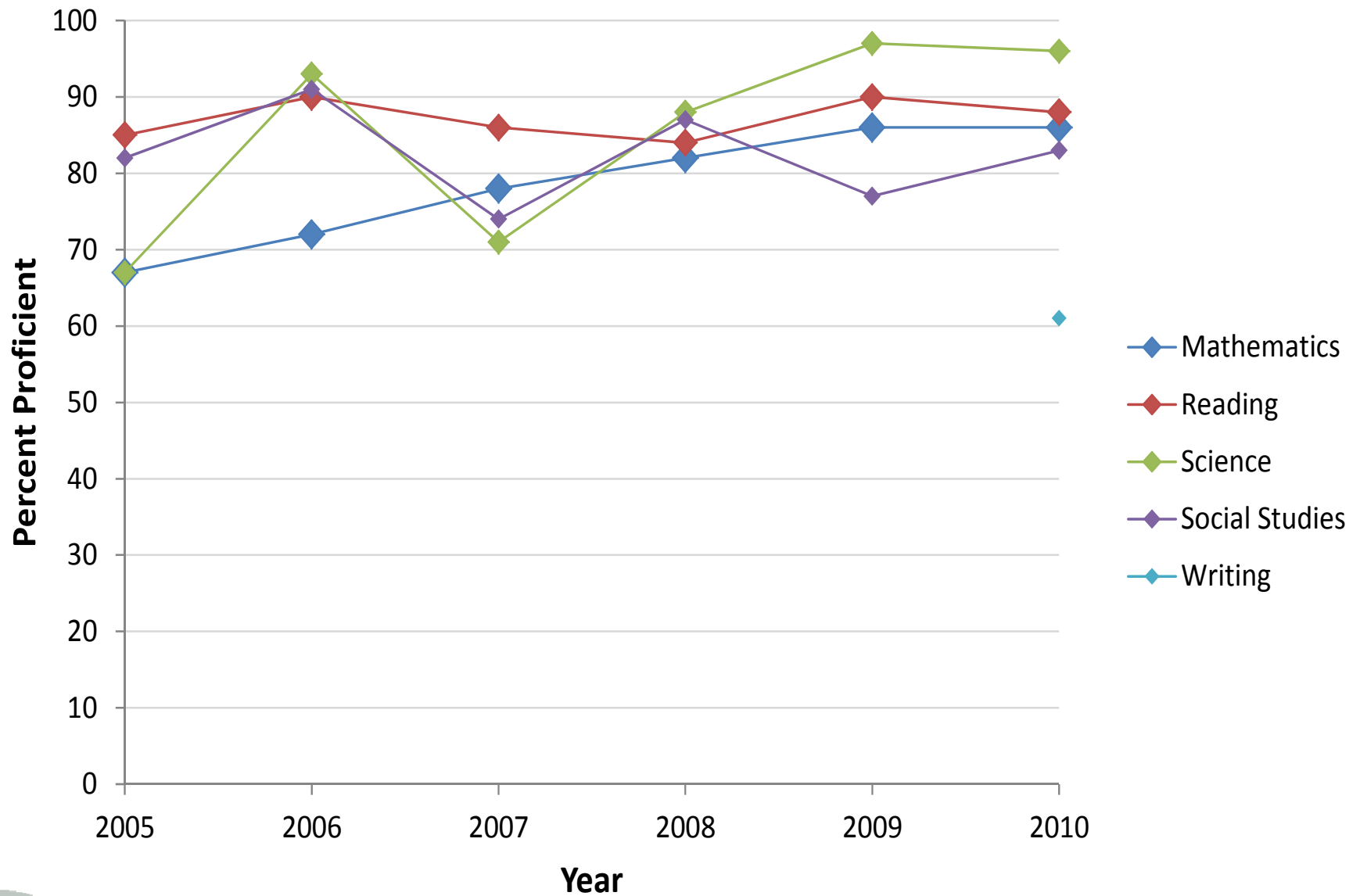
## School Observations

- Education is personalized, with staff investment in each student's learning.
- Committed to a culture of respect for all students.
- Honors individual growth and achievement.
- Recognizes "silent scholars."
- Focuses on collaborative relationships between staff and students.
- Develops collaborative relationships with the community—especially with the alumni association.
- Parents and community members believe that school is a warm, friendly place where students want to come and learn.
- Welcomes, encourages and appreciates public and community engagement and support.

Outcomes	Focal School	Comparison Group	
		Average	St. Dev.
Top to bottom ranking	19	13	16
MEAP data 2009 (Full Academic Year, Feeder School)	Focal School	Comparison Group	
		Average	St. Dev.
% proficient in mathematics	86	65	13
% proficient in reading	84	70	9
% proficient in science	87	56	16
% proficient in social studies	84	43	15
MEAP data 2010 (All Students, Tested School)	Focal School	Comparison Group	
		Average	St. Dev.
% proficient in mathematics	86	66	15
% proficient in reading	88	61	12
% proficient in science	96	44	18
% proficient in social studies	83	47	20
% proficient in writing	61	16	13
ACT data 2010 (All Students)	Focal School	Comparison Group	
		Average	St. Dev.
% meeting benchmark in English	--	--	--
% meeting benchmark in mathematics	--	--	--
% meeting benchmark in reading	--	--	--
% meeting benchmark in science	--	--	--
% meeting benchmarks in all subjects	--	--	--
MME data 2010 (Full Academic Year only)	Focal School	Comparison Group	
		Average	St. Dev.
% proficient in mathematics	--	--	--
% proficient in reading	--	--	--
% proficient in science	--	--	--
% proficient in social studies	--	--	--
% proficient in writing	--	--	--
2010 Graduation and Dropout Rates	Focal School	Comparison Group	
		Average	St. Dev.
4-year cohort graduation percent	--	--	--
4-year cohort dropout percent	--	--	--



### Pasteur Elementary School - Detroit City School District - Wayne RESA



# Mt. Hope School Lansing Public School District

Ingham ISD

## COMPARISON GROUP

- K-5/6 schools in midsize cities
- SFA around \$7,900
- Enrollment around 350
- Minority around 74%
- ED around 85%
- SWD around 17%
- LEP around 3%

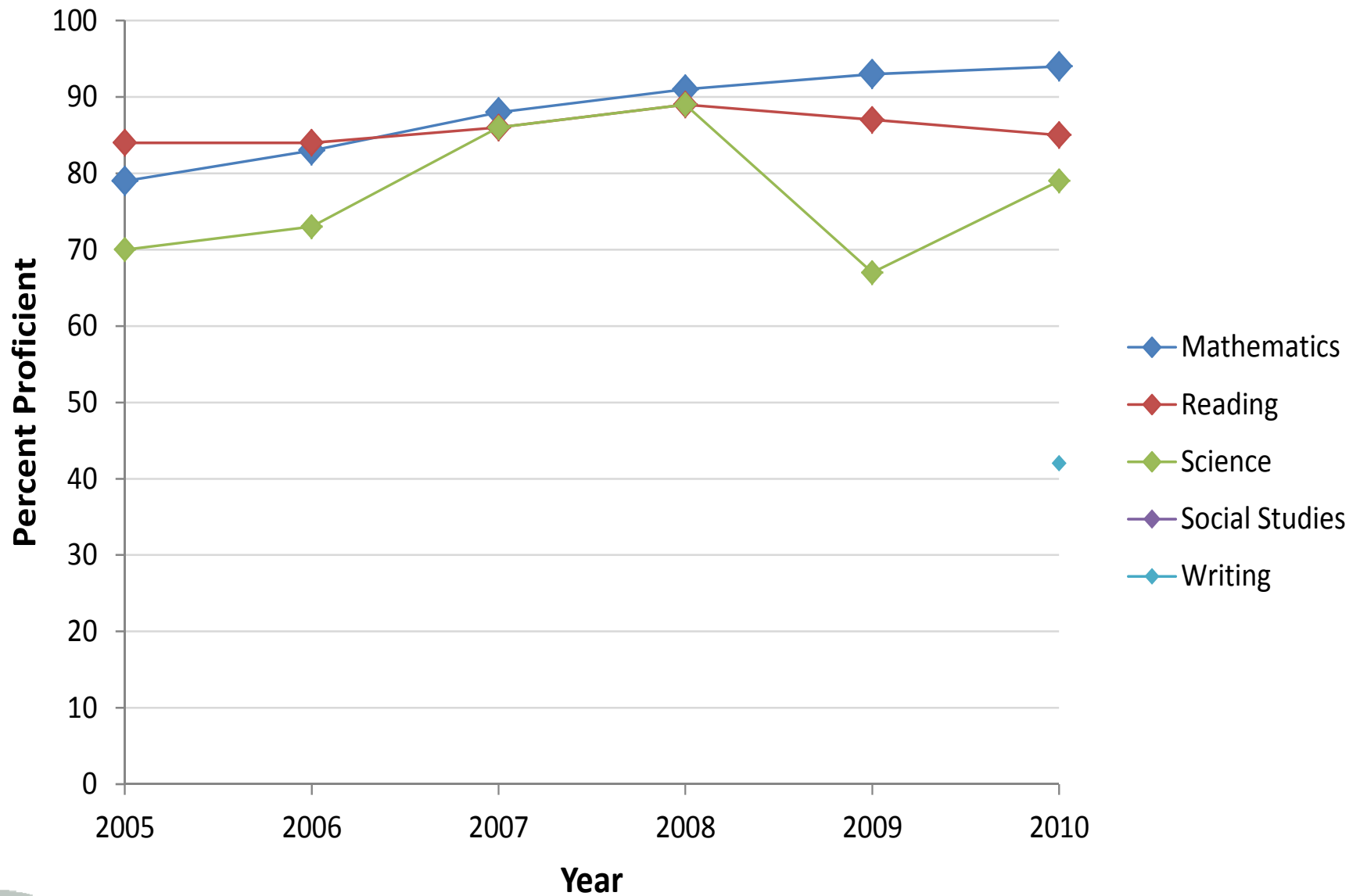
Locale	Focal School	Comparison Group	
		Percent in each locale	
Large city	Yes	100%	
Midsize city			
Small city			
Suburb of large city			
Suburb of midsize city			
Suburb of small city			
Town on urban fringe			
Distant town			
Remote town			
Rural area on urban fringe			
Distant rural area			
Remote rural area			
Grade Configuration	Focal School	Comparison Group	
		Percent w/each grade	
Includes grade K	Yes	100%	
Includes grade 1	Yes	100%	
Includes grade 2	Yes	100%	
Includes grade 3	Yes	100%	
Includes grade 4	Yes	100%	
Includes grade 5	Yes	100%	
Includes grade 6		37%	
Includes grade 7		3%	
Includes grade 8			
Includes grade 9			
Includes grade 10			
Includes grade 11			
Includes grade 12			
Other	Focal School	Comparison Group	
		Average	St. Dev.
State foundation allowance	\$7,835	\$7,894	\$200
Enrollment	299	337	68
% minority	64%	73%	17%
% economic disadvantage	84%	85%	7%
% students with disabilities	17%	17%	4%
% limited English proficient	3%	5%	4%

## School Observations

- Experienced and stable staff with strong curricular knowledge and teaching skills.
- Implementation of *Response to Intervention* and differentiated instruction.
- Uses data analysis to monitor individual student strengths and weaknesses.
- Works with families to address social, emotional, and academic needs of a very diverse population.
- Has a good atmosphere, reduces bullying, helping students through mistakes.
- Teachers connect with students.
- Collaborative team approach across subjects and grades.
- A neighborhood school.
- High student achievement result of committed staff and students.

Outcomes	Focal School	Comparison Group	
		Average	St. Dev.
Top to bottom ranking	68	15	9
MEAP data 2009 (Full Academic Year, Feeder School)	Focal School	Comparison Group	
		Average	St. Dev.
% proficient in mathematics	89	75	9
% proficient in reading	85	74	11
% proficient in science	73	64	17
% proficient in social studies	77	52	15
MEAP data 2010 (All Students, Tested School)	Focal School	Comparison Group	
		Average	St. Dev.
% proficient in mathematics	94	79	8
% proficient in reading	85	73	10
% proficient in science	79	56	15
% proficient in social studies	--	--	--
% proficient in writing	42	29	11
ACT data 2010 (All Students)	Focal School	Comparison Group	
		Average	St. Dev.
% meeting benchmark in English	--	--	--
% meeting benchmark in mathematics	--	--	--
% meeting benchmark in reading	--	--	--
% meeting benchmark in science	--	--	--
% meeting benchmarks in all subjects	--	--	--
MME data 2010 (Full Academic Year only)	Focal School	Comparison Group	
		Average	St. Dev.
% proficient in mathematics	--	--	--
% proficient in reading	--	--	--
% proficient in science	--	--	--
% proficient in social studies	--	--	--
% proficient in writing	--	--	--
2010 Graduation and Dropout Rates	Focal School	Comparison Group	
		Average	St. Dev.
4-year cohort graduation percent	--	--	--
4-year cohort dropout percent	--	--	--

### Mt. Hope School - Lansing Public School District - Ingham ISD



# E.B. Holman Elementary School Stanton Township Public Schools

Copper Country ISD

## COMPARISON GROUP

- Variable grade configuration in a distant rural area (K-5 most prevalent)
- State foundation allowance around \$7,350
- Enrollment around 300
- Minority around 5%
- Economic disadvantage around 62%
- Students with disabilities around 11%
- Limited English Proficient around 0%

Locale	Focal School	Comparison Group	
		Percent in each locale	
Large city			
Midsize city			
Small city			
Suburb of large city			
Suburb of midsize city			
Suburb of small city			
Town on urban fringe			
Distant town			
Remote town			
Rural area on urban fringe			
Distant rural area	Yes	100%	
Remote rural area			
Grade Configuration	Focal School	Comparison Group	
		Percent w/each grade	
Includes grade K	Yes	93%	
Includes grade 1	Yes	93%	
Includes grade 2	Yes	93%	
Includes grade 3	Yes	93%	
Includes grade 4	Yes	83%	
Includes grade 5	Yes	83%	
Includes grade 6	Yes	57%	
Includes grade 7	Yes	17%	
Includes grade 8	Yes	17%	
Includes grade 9		3%	
Includes grade 10		3%	
Includes grade 11		3%	
Includes grade 12		3%	
Other	Focal School	Comparison Group	
		Average	St. Dev.
State foundation allowance	\$7,316	\$7,339	\$105
Enrollment	142	303	115
% minority	1%	5%	6%
% economic disadvantage	69%	62%	6%
% students with disabilities	6%	11%	4%
% limited English proficient	0%	0%	1%

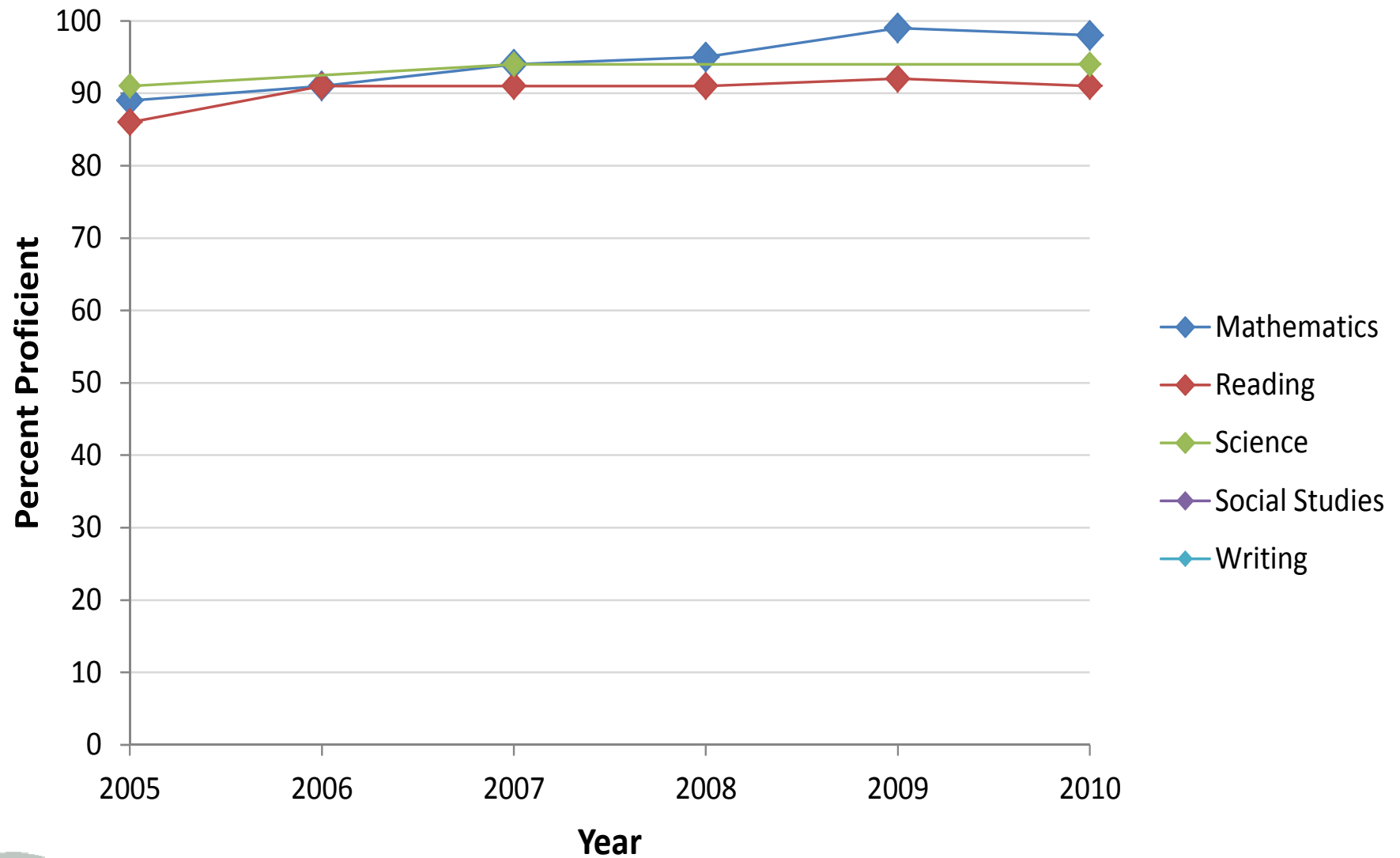
## School Observations

- This school is a rural K-8 school, small in size, and has a high proportion of low income students, but uses these factors to their advantage rather than disadvantage.
- Capitalizes on small student-to-teacher ratio in order to provide personal attention to students.
- Individualizes education, and ensuring their students are ready to transition to high school.
- Focuses on mathematics and science.
- Actively focuses on recruiting and training high-quality teachers.
- This school has a gifted and talented program established to challenge high-performing students within the school.

Outcomes	Focal School	Comparison Group	
		Average	St. Dev.
Top to bottom ranking	73	44	19
MEAP data 2009 (Full Academic Year, Feeder School)	Focal School	Comparison Group	
		Average	St. Dev.
% proficient in mathematics	99	87	8
% proficient in reading	92	86	6
% proficient in science	--	--	--
% proficient in social studies	--	--	--
MEAP data 2010 (All Students, Tested School)	Focal School	Comparison Group	
		Average	St. Dev.
% proficient in mathematics	98	88	8
% proficient in reading	91	84	7
% proficient in science	94	82	8
% proficient in social studies	--	--	--
% proficient in writing	--	--	--
ACT data 2010 (All Students)	Focal School	Comparison Group	
		Average	St. Dev.
% meeting benchmark in English	--	--	--
% meeting benchmark in mathematics	--	--	--
% meeting benchmark in reading	--	--	--
% meeting benchmark in science	--	--	--
% meeting benchmarks in all subjects	--	--	--
MME data 2010 (Full Academic Year only)	Focal School	Comparison Group	
		Average	St. Dev.
% proficient in mathematics	--	--	--
% proficient in reading	--	--	--
% proficient in science	--	--	--
% proficient in social studies	--	--	--
% proficient in writing	--	--	--
2010 Graduation and Dropout Rates	Focal School	Comparison Group	
		Average	St. Dev.
4-year cohort graduation percent	--	--	--



# E.B. Holman Elementary School - Stanton Township Public Schools - Copper Country ISD



# Detroit Service Learning Academy

Detroit

## COMPARISON GROUP

- K-8 schools in large cities
- Foundation allowance around \$7,650
- Enrollment around 700
- Minority around 99%
- Economic disadvantage around 83%
- Students with disabilities around 13%
- Limited English proficient around 1%

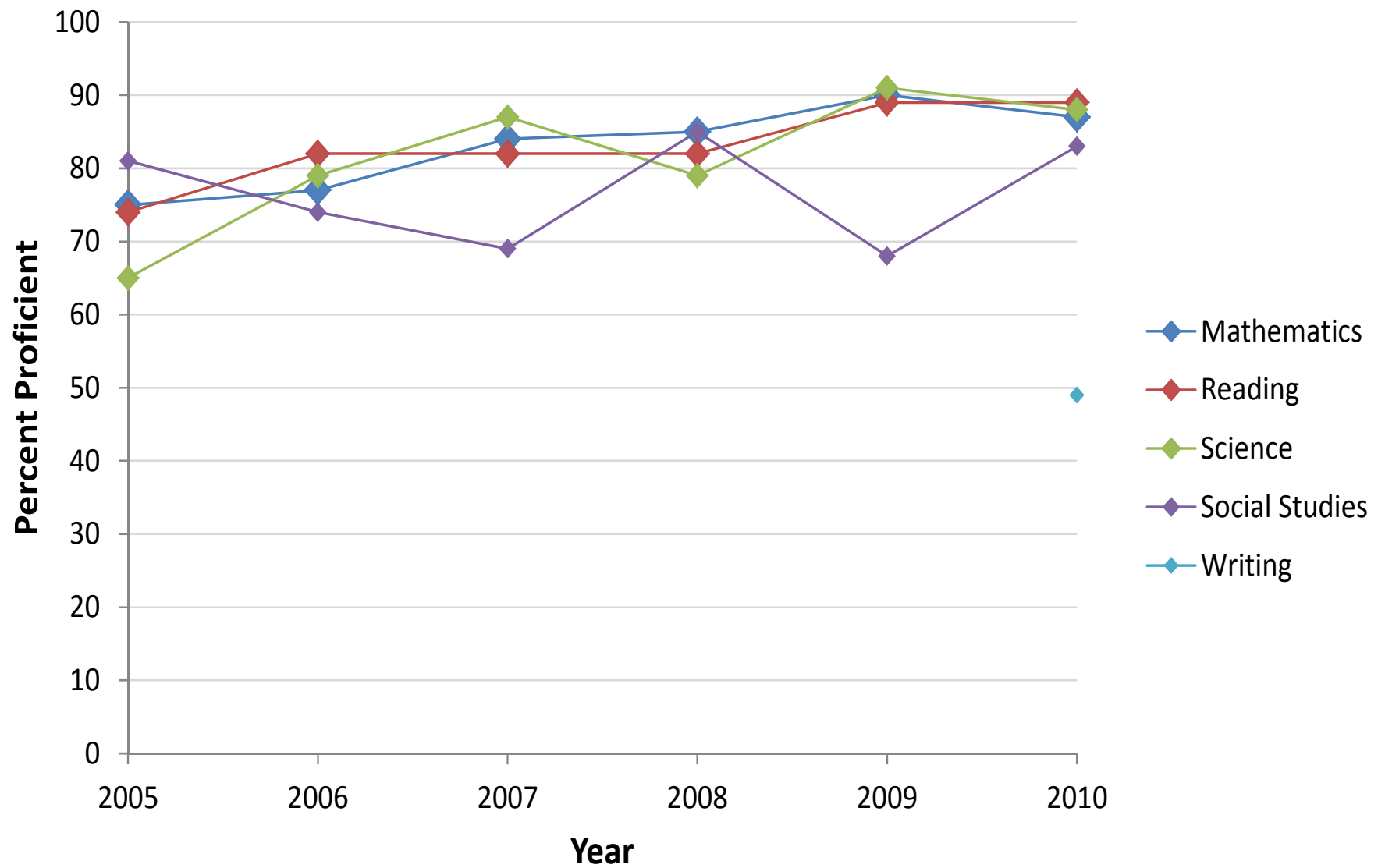
Locale	Focal School	Comparison Group	
		Percent in each locale	
Large city	Yes	100%	
Midsize city			
Small city			
Suburb of large city			
Suburb of midsize city			
Suburb of small city			
Town on urban fringe			
Distant town			
Remote town			
Rural area on urban fringe			
Distant rural area			
Remote rural area			
Grade Configuration	Focal School	Comparison Group	
		Percent w/each grade	
Includes grade K	Yes	100%	
Includes grade 1	Yes	100%	
Includes grade 2	Yes	100%	
Includes grade 3	Yes	100%	
Includes grade 4	Yes	100%	
Includes grade 5	Yes	100%	
Includes grade 6	Yes	93%	
Includes grade 7	Yes	87%	
Includes grade 8	Yes	80%	
Includes grade 9			
Includes grade 10			
Includes grade 11			
Includes grade 12			
Other	Focal School	Comparison Group	
		Average	St. Dev.
State foundation allowance	\$7,580	\$7,631	\$39
Enrollment	1128	700	180
% minority	100%	99%	2%
% economic disadvantage	81%	83%	6%
% students with disabilities	11%	13%	5%
% limited English proficient	0%	1%	2%

## School Observations

- High expectations for all stakeholders.
- Use of research-based instructional practices.
- Small group instruction.
- Integrated service learning.
- High level of collaboration among teachers and a focus on making experts who find their love within education.
- Focus on technology for instruction and for professional development.
- Expectation: "Excellence is in our DNA."
- Provide students with opportunities to be prepared to compete in the global economy, and to develop as critical thinkers.
- Pointed and direct assessment of student learning, using both MEAP and frequent benchmark assessment data.

Outcomes	Focal School	Comparison Group	
		Average	St. Dev.
Top to bottom ranking	72	18	16
MEAP data 2009 (Full Academic Year, Feeder School)	Focal School	Comparison Group	
		Average	St. Dev.
% proficient in mathematics	87	68	11
% proficient in reading	87	73	10
% proficient in science	87	56	14
% proficient in social studies	64	48	14
MEAP data 2010 (All Students, Tested School)	Focal School	Comparison Group	
		Average	St. Dev.
% proficient in mathematics	87	68	11
% proficient in reading	89	66	12
% proficient in science	88	50	15
% proficient in social studies	83	46	20
% proficient in writing	49	25	16
ACT data 2010 (All Students)	Focal School	Comparison Group	
		Average	St. Dev.
% meeting benchmark in English	--	--	--
% meeting benchmark in mathematics	--	--	--
% meeting benchmark in reading	--	--	--
% meeting benchmark in science	--	--	--
% meeting benchmarks in all subjects	--	--	--
MME data 2010 (Full Academic Year only)	Focal School	Comparison Group	
		Average	St. Dev.
% proficient in mathematics	--	--	--
% proficient in reading	--	--	--
% proficient in science	--	--	--
% proficient in social studies	--	--	--
% proficient in writing	--	--	--
2010 Graduation and Dropout Rates	Focal School	Comparison Group	
		Average	St. Dev.
4-year cohort graduation percent	--	--	--
4-year cohort dropout percent	--	--	--

# Detroit Service Learning Academy - Detroit Service Learning Academy - Wayne RESA



# Grandville West Elementary School Grandville Public Schools

Kent ISD

## COMPARISON GROUP

- K-5/6 schools in suburbs of large cities
- SFA around \$7,550
- Enrollment around 400
- Minority around 14%
- ED around 37%
- SWD around 16%
- LEP around 2%

Locale	Focal School	Comparison Group	
		Percent in each locale	
Large city			
Midsize city			
Small city			
Suburb of large city	Yes	100%	
Suburb of midsize city			
Suburb of small city			
Town on urban fringe			
Distant town			
Remote town			
Rural area on urban fringe			
Distant rural area			
Remote rural area			
Grade Configuration	Focal School	Comparison Group	
		Percent w/each grade	
Includes grade K	Yes	93%	
Includes grade 1	Yes	100%	
Includes grade 2	Yes	100%	
Includes grade 3	Yes	100%	
Includes grade 4	Yes	100%	
Includes grade 5	Yes	100%	
Includes grade 6	Yes	47%	
Includes grade 7			
Includes grade 8			
Includes grade 9			
Includes grade 10			
Includes grade 11			
Includes grade 12			
Other	Focal School	Comparison Group	
		Average	St. Dev.
State foundation allowance	\$7,316	\$7,561	\$237
Enrollment	375	406	78
% minority	20%	14%	8%
% economic disadvantage	38%	37%	5%
% students with disabilities	17%	16%	3%
% limited English proficient	2%	2%	2%

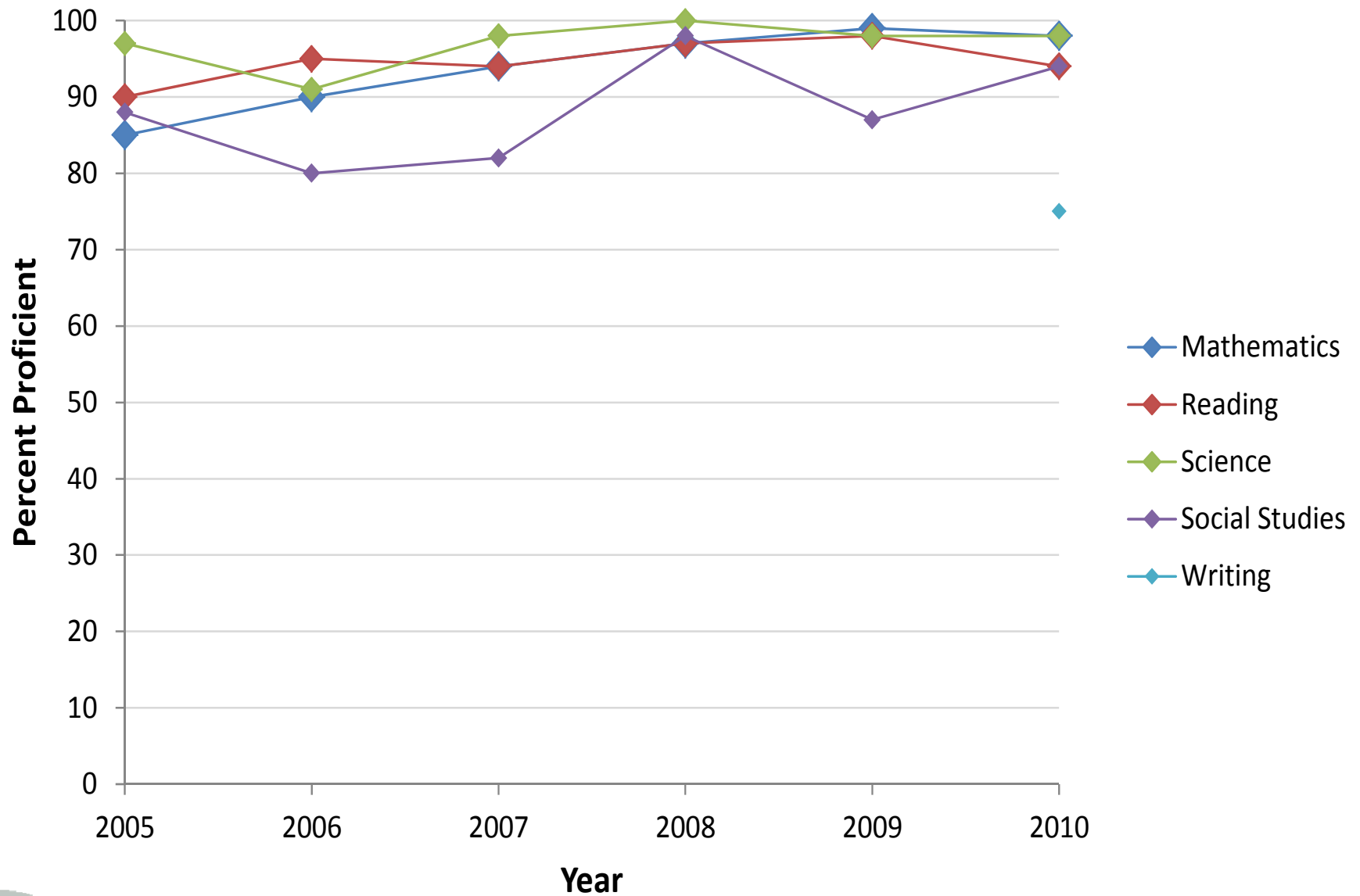
## School Observations

- An aggressive Positive Behavior support plan provides a safe learning environment.
- Reachable goals and small targets, with staff buy-in.
- Implemented Response to Intervention (RTI) and monitor all students' progress every 2-3 weeks to identify what they need help with or how to keep them meeting benchmarks.
- Very dedicated staff with a high regard for education.
- Whole community support, including a program through a local church that brings in mentors from all walks of life.
- Everyone at West is very focused with total commitment from all staff.
- Teacher leaders are important and evident, putting aside socio-economic factors and focusing on learning.

Outcomes	Focal School	Comparison Group	
		Average	St. Dev.
Top to bottom ranking	89	68	16
MEAP data 2009 (Full Academic Year, Feeder School)	Focal School	Comparison Group	
		Average	St. Dev.
% proficient in mathematics	97	91	3
% proficient in reading	96	91	3
% proficient in science	96	87	6
% proficient in social studies	89	85	7
MEAP data 2010 (All Students, Tested School)	Focal School	Comparison Group	
		Average	St. Dev.
% proficient in mathematics	98	92	3
% proficient in reading	94	89	3
% proficient in science	98	85	6
% proficient in social studies	94	86	6
% proficient in writing	75	50	10
ACT data 2010 (All Students)	Focal School	Comparison Group	
		Average	St. Dev.
% meeting benchmark in English	--	--	--
% meeting benchmark in mathematics	--	--	--
% meeting benchmark in reading	--	--	--
% meeting benchmark in science	--	--	--
% meeting benchmarks in all subjects	--	--	--
MME data 2010 (Full Academic Year only)	Focal School	Comparison Group	
		Average	St. Dev.
% proficient in mathematics	--	--	--
% proficient in reading	--	--	--
% proficient in science	--	--	--
% proficient in social studies	--	--	--
% proficient in writing	--	--	--
2010 Graduation and Dropout Rates	Focal School	Comparison Group	
		Average	St. Dev.
4-year cohort graduation percent	--	--	--
4-year cohort dropout percent	--	--	--



### Grandville West Elementary School - Grandville Public Schools - Kent ISD



# Benzie Central Sr. High School Benzie County Central Schools

Traverse Bay Area ISD

## COMPARISON GROUP

- Remote rural high schools
- SFA around \$7,400
- Enrollment around 350
- Minority around 8%
- ED around 54%
- SWD around 13%
- LEP around 1%

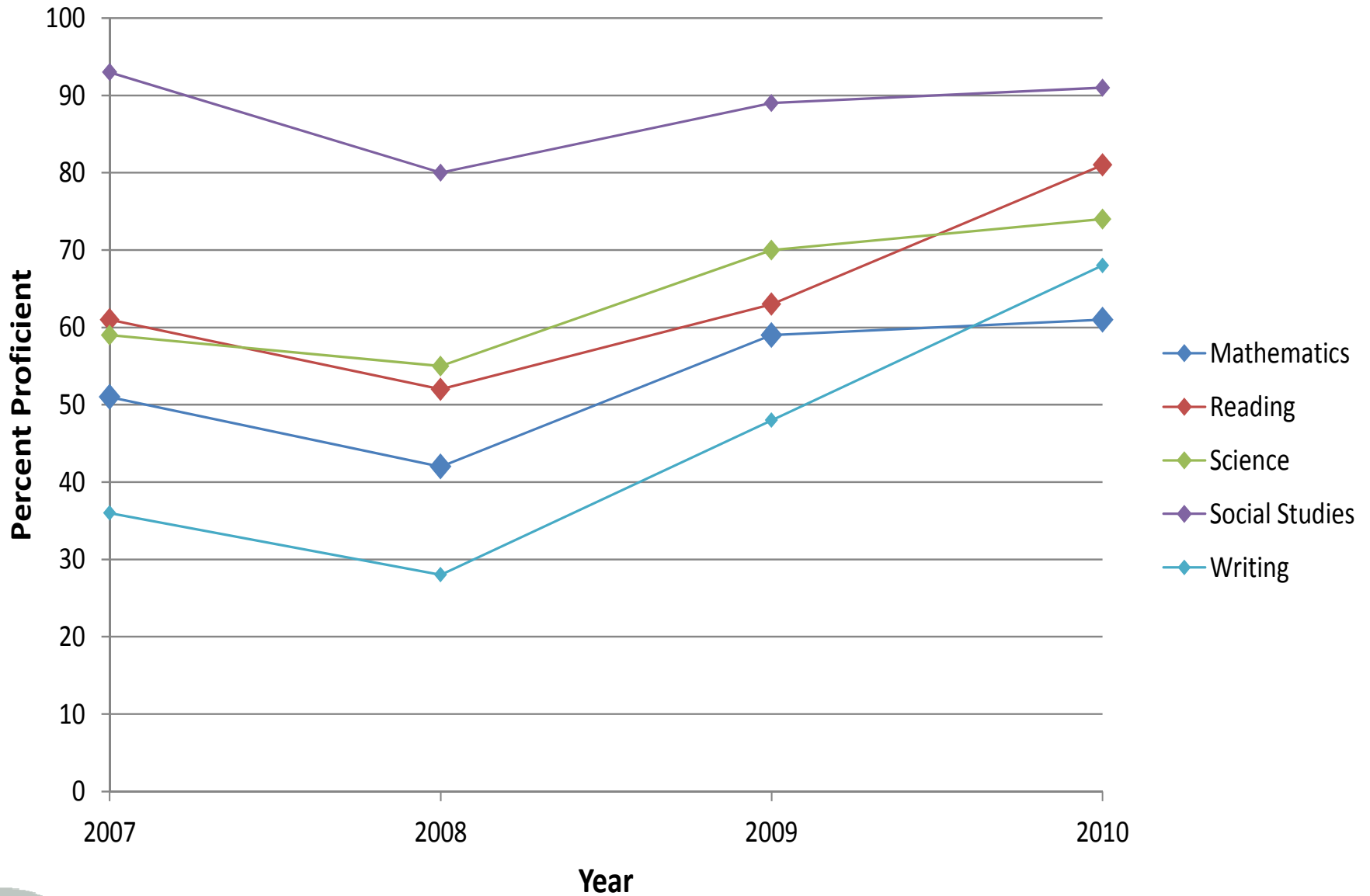
Locale	Focal School	Comparison Group	
		Percent in each locale	
Large city			
Midsize city			
Small city			
Suburb of large city		7%	
Suburb of midsize city			
Suburb of small city			
Town on urban fringe			
Distant town			
Remote town			
Rural area on urban fringe			
Distant rural area		7%	
Remote rural area	Yes	87%	
Grade Configuration	Focal School	Comparison Group	
		Percent w/each grade	
Includes grade K			
Includes grade 1			
Includes grade 2			
Includes grade 3			
Includes grade 4			
Includes grade 5			
Includes grade 6		7%	
Includes grade 7		37%	
Includes grade 8		33%	
Includes grade 9	Yes	100%	
Includes grade 10	Yes	100%	
Includes grade 11	Yes	100%	
Includes grade 12	Yes	100%	
Other	Focal School	Comparison Group	
		Average	St. Dev.
State foundation allowance	\$7,316	\$7,377	\$187
Enrollment	565	355	168
% minority	7%	8%	8%
% economic disadvantage	58%	54%	8%
% students with disabilities	6%	13%	4%
% limited English proficient	0%	1%	2%

## School Observations

- Dedicated K-12 staff, preparation starts at the beginning.
- Assessment taken very seriously, used to provide feedback.
- Programs for all types of learners, challenge all students.
- Focus on higher education.
- Traverse Bay ISD provides excellent support.
- Collaborates with other districts, find efficiencies.
- Strong building leadership focused on student achievement and interested in research-driven work and professional development.
- The community takes pride in students at this school, with many volunteers in the schools and highly engaged community members.
- School Improvement Plan is carefully developed and followed, informed by data; district works closely with RDI and with other partners to use data appropriately.

Outcomes	Focal School	Comparison Group	
		Average	St. Dev.
Top to bottom ranking	94	43	22
MEAP data 2009 (Full Academic Year, Feeder School)	Focal School	Comparison Group	
		Average	St. Dev.
% proficient in mathematics	--	--	--
% proficient in reading	--	--	--
% proficient in science	--	--	--
% proficient in social studies	--	--	--
MEAP data 2010 (All Students, Tested School)	Focal School	Comparison Group	
		Average	St. Dev.
% proficient in mathematics	--	--	--
% proficient in reading	--	--	--
% proficient in science	--	--	--
% proficient in social studies	77	75	7
% proficient in writing	--	--	--
ACT data 2010 (All Students)	Focal School	Comparison Group	
		Average	St. Dev.
% meeting benchmark in English	75	45	11
% meeting benchmark in mathematics	37	20	11
% meeting benchmark in reading	49	35	9
% meeting benchmark in science	25	15	8
% meeting benchmarks in all subjects	18	9	6
MME data 2010 (Full Academic Year only)	Focal School	Comparison Group	
		Average	St. Dev.
% proficient in mathematics	62	46	12
% proficient in reading	82	63	11
% proficient in science	75	56	10
% proficient in social studies	92	79	7
% proficient in writing	68	36	11
2010 Graduation and Dropout Rates	Focal School	Comparison Group	
		Average	St. Dev.
4-year cohort graduation percent	88	87	8
4-year cohort dropout percent	5	6	3

### Benzie Central Sr. High School - Benzie County Central Schools - Traverse Bay Area ISD



# Cass City Middle School Cass City Public Schools

Tuscola ISD

## COMPARISON GROUP

- Middle schools in rural areas near an urban fringe
- State foundation allowance around \$7,400
- Enrollment around 425
- Minority around 8%
- Economic disadvantage around 54%
- Students with disabilities around 13%
- Limited English proficient around 1%

Locale	Focal School	Comparison Group	
		Percent in each locale	
Large city			
Midsize city			
Small city			
Suburb of large city			
Suburb of midsize city			
Suburb of small city			
Town on urban fringe			
Distant town			
Remote town			
Rural area on urban fringe	Yes	83%	
Distant rural area		17%	
Remote rural area			
Grade Configuration	Focal School	Comparison Group	
		Percent w/each grade	
Includes grade K			
Includes grade 1			
Includes grade 2			
Includes grade 3			
Includes grade 4			
Includes grade 5	Yes	37%	
Includes grade 6	Yes	93%	
Includes grade 7	Yes	100%	
Includes grade 8	Yes	93%	
Includes grade 9	Yes	3%	
Includes grade 10		3%	
Includes grade 11		3%	
Includes grade 12		3%	
Other	Focal School	Comparison Group	
		Average	St. Dev.
State foundation allowance	\$7,316	\$7,375	\$195
Enrollment	341	431	138
% minority	2%	8%	7%
% economic disadvantage	57%	54%	8%
% students with disabilities	11%	13%	2%
% limited English proficient	1%	1%	2%

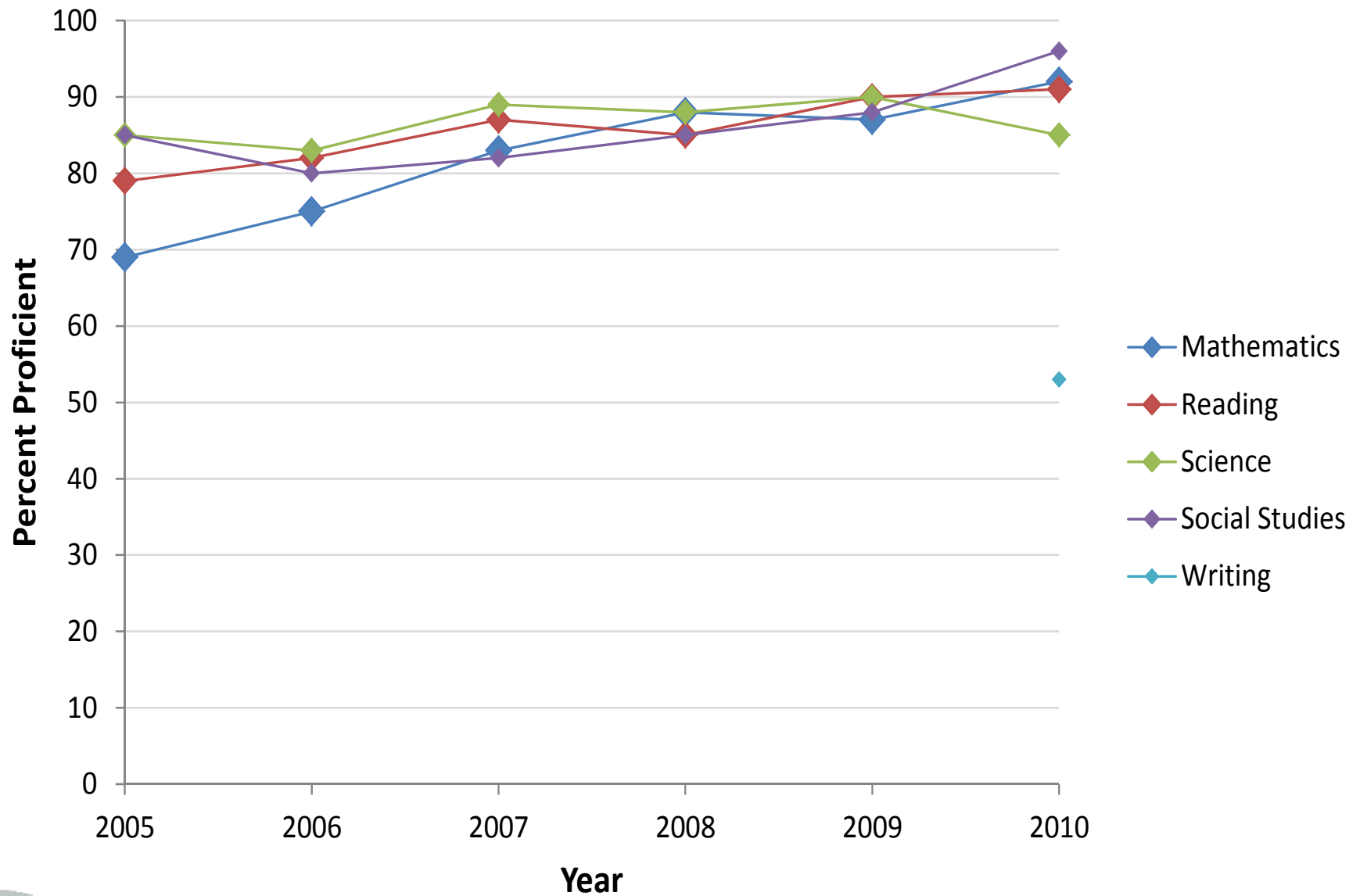
## School Observations

- Great experienced teachers.
- Frequent progress monitoring to identify struggling students and provide targeted support—looking at data and DOING something about it!
- Staff buy-in for using data to inform instruction and action.
- Michigan's Integrated Behavior and Learning Support Initiative (MiBLSi) helps students become responsible for their behavior.
- District Superintendent reports the school is collaborative with good leadership, willing to spend the \$ for professional development for teachers.
- Day care and preschool has resulted in more students prepared for kindergarten.
- Embedded community support.
- Personal attention and individualized instruction for students.
- "Razor-sharp focus on achievement."

Outcomes	Focal School	Comparison Group	
		Average	St. Dev.
Top to bottom ranking	50	44	16
MEAP data 2009 (Full Academic Year, Feeder School)	Focal School	Comparison Group	
		Average	St. Dev.
% proficient in mathematics	88	79	6
% proficient in reading	89	86	4
% proficient in science	88	82	6
% proficient in social studies	85	76	8
MEAP data 2010 (All Students, Tested School)	Focal School	Comparison Group	
		Average	St. Dev.
% proficient in mathematics	92	84	5
% proficient in reading	91	84	4
% proficient in science	85	84	5
% proficient in social studies	96	79	5
% proficient in writing	53	45	10
ACT data 2010 (All Students)	Focal School	Comparison Group	
		Average	St. Dev.
% meeting benchmark in English	--	--	--
% meeting benchmark in mathematics	--	--	--
% meeting benchmark in reading	--	--	--
% meeting benchmark in science	--	--	--
% meeting benchmarks in all subjects	--	--	--
MME data 2010 (Full Academic Year only)	Focal School	Comparison Group	
		Average	St. Dev.
% proficient in mathematics	--	--	--
% proficient in reading	--	--	--
% proficient in science	--	--	--
% proficient in social studies	--	--	--
% proficient in writing	--	--	--
2010 Graduation and Dropout Rates	Focal School	Comparison Group	
		Average	St. Dev.
4-year cohort graduation percent	--	--	--
4-year cohort dropout percent	--	--	--



### Cass City Middle School - Cass City Public Schools - Tuscola ISD



# Martin Luther King, Jr. Education Center Academy

Detroit

## COMPARISON GROUP

- K-8 schools in large cities
- Foundation allowance around \$7,600
- Enrollment around 475
- Minority around 99%
- Economic disadvantage around 85%
- Students with disabilities around 8%
- Limited English proficient around 0%

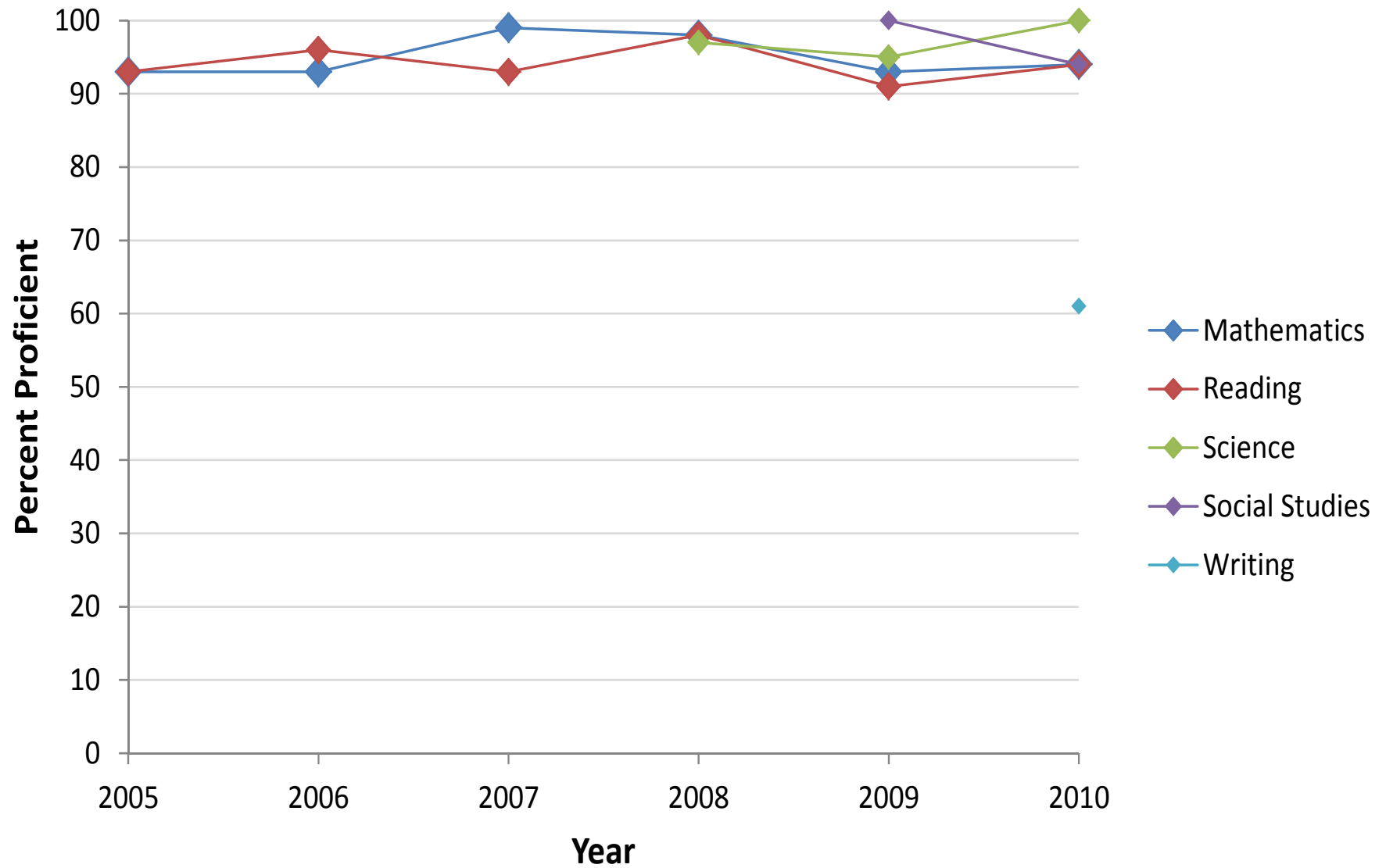
Locale	Focal School	Comparison Group	
		Percent in each locale	
Large city	Yes	100%	
Midsize city			
Small city			
Suburb of large city			
Suburb of midsize city			
Suburb of small city			
Town on urban fringe			
Distant town			
Remote town			
Rural area on urban fringe			
Distant rural area			
Remote rural area			
Grade Configuration	Focal School	Comparison Group	
		Percent w/each grade	
Includes grade K	Yes	97%	
Includes grade 1	Yes	97%	
Includes grade 2	Yes	97%	
Includes grade 3	Yes	100%	
Includes grade 4	Yes	100%	
Includes grade 5	Yes	100%	
Includes grade 6	Yes	83%	
Includes grade 7	Yes	80%	
Includes grade 8	Yes	73%	
Includes grade 9		7%	
Includes grade 10		3%	
Includes grade 11		3%	
Includes grade 12		3%	
Other	Focal School	Comparison Group	
		Average	St. Dev.
State foundation allowance	\$7,580	\$7,601	\$36
Enrollment	314	471	206
% minority	100%	99%	2%
% economic disadvantage	85%	85%	7%
% students with disabilities	0%	8%	3%
% limited English proficient	0%	0%	2%

## School Observations

- School climate is nurturing.
- Belief that children can master basic concepts of reading and math at an early age is foundational for our structured, self-paced kindergarten phonics reading curriculum.
- High expectations and teamwork drive commitment to academic excellence.
- Staff retention rates evidence experience, effective teachers, and strong male presence.
- Small class size enhances individualization and differentiation of instruction.
- Diverse challenging and engaging academic, aesthetic, and technological learning opportunities appropriate to abilities, desire, and motivation.
- School improvement initiatives: stimulating enrichment activities one-on-one tutoring during and after school, & summer school.

Outcomes	Focal School	Comparison Group	
		Average	St. Dev.
Top to bottom ranking	90	17	16
MEAP data 2009 (Full Academic Year, Feeder School)	Focal School	Comparison Group	
		Average	St. Dev.
% proficient in mathematics	91	68	12
% proficient in reading	90	74	7
% proficient in science	95	58	12
% proficient in social studies	95	47	10
MEAP data 2010 (All Students, Tested School)	Focal School	Comparison Group	
		Average	St. Dev.
% proficient in mathematics	94	71	11
% proficient in reading	94	69	11
% proficient in science	100	51	14
% proficient in social studies	94	46	16
% proficient in writing	61	28	14
ACT data 2010 (All Students)	Focal School	Comparison Group	
		Average	St. Dev.
% meeting benchmark in English	--	--	--
% meeting benchmark in mathematics	--	--	--
% meeting benchmark in reading	--	--	--
% meeting benchmark in science	--	--	--
% meeting benchmarks in all subjects	--	--	--
MME data 2010 (Full Academic Year only)	Focal School	Comparison Group	
		Average	St. Dev.
% proficient in mathematics	--	--	--
% proficient in reading	--	--	--
% proficient in science	--	--	--
% proficient in social studies	--	--	--
% proficient in writing	--	--	--
2010 Graduation and Dropout Rates	Focal School	Comparison Group	
		Average	St. Dev.
4-year cohort graduation percent	--	--	--
4-year cohort dropout percent	--	--	--

**Martin Luther King, Jr. Education Center Academy - Martin Luther King, Jr.  
Education Center Academy - Wayne RESA**



# Glen Lake Elementary Glen Lake Community Schools

Traverse Bay Area ISD

## COMPARISON GROUP

- K-5/6 schools in suburbs of large cities
- State foundation allowance of around \$7,550
- Enrollment around 350
- Minority around 10%
- Economic disadvantage around 29%
- Students with disabilities around 10%
- Limited English proficient around 1%

### NOTES

- This school is disadvantaged by the comparison group (a remote rural school compared to the suburbs)

Locale	Focal School	Comparison Group	
		Percent in each locale	
Large city			
Midsize city			
Small city			
Suburb of large city		83%	
Suburb of midsize city			
Suburb of small city			
Town on urban fringe			
Distant town			
Remote town			
Rural area on urban fringe			
Distant rural area		10%	
Remote rural area	Yes	7%	
Grade Configuration	Focal School	Comparison Group	
		Percent w/each grade	
Includes grade K	Yes	100%	
Includes grade 1	Yes	100%	
Includes grade 2	Yes	100%	
Includes grade 3	Yes	100%	
Includes grade 4	Yes	100%	
Includes grade 5	Yes	100%	
Includes grade 6	Yes	50%	
Includes grade 7			
Includes grade 8			
Includes grade 9			
Includes grade 10			
Includes grade 11			
Includes grade 12			
Other	Focal School	Comparison Group	
		Average	St. Dev.
State foundation allowance	\$7,469	\$7,528	\$234
Enrollment	389	449	89
% minority	4%	10%	4%
% economic disadvantage	27%	29%	7%
% students with disabilities	7%	10%	2%
% limited English proficient	0%	1%	2%

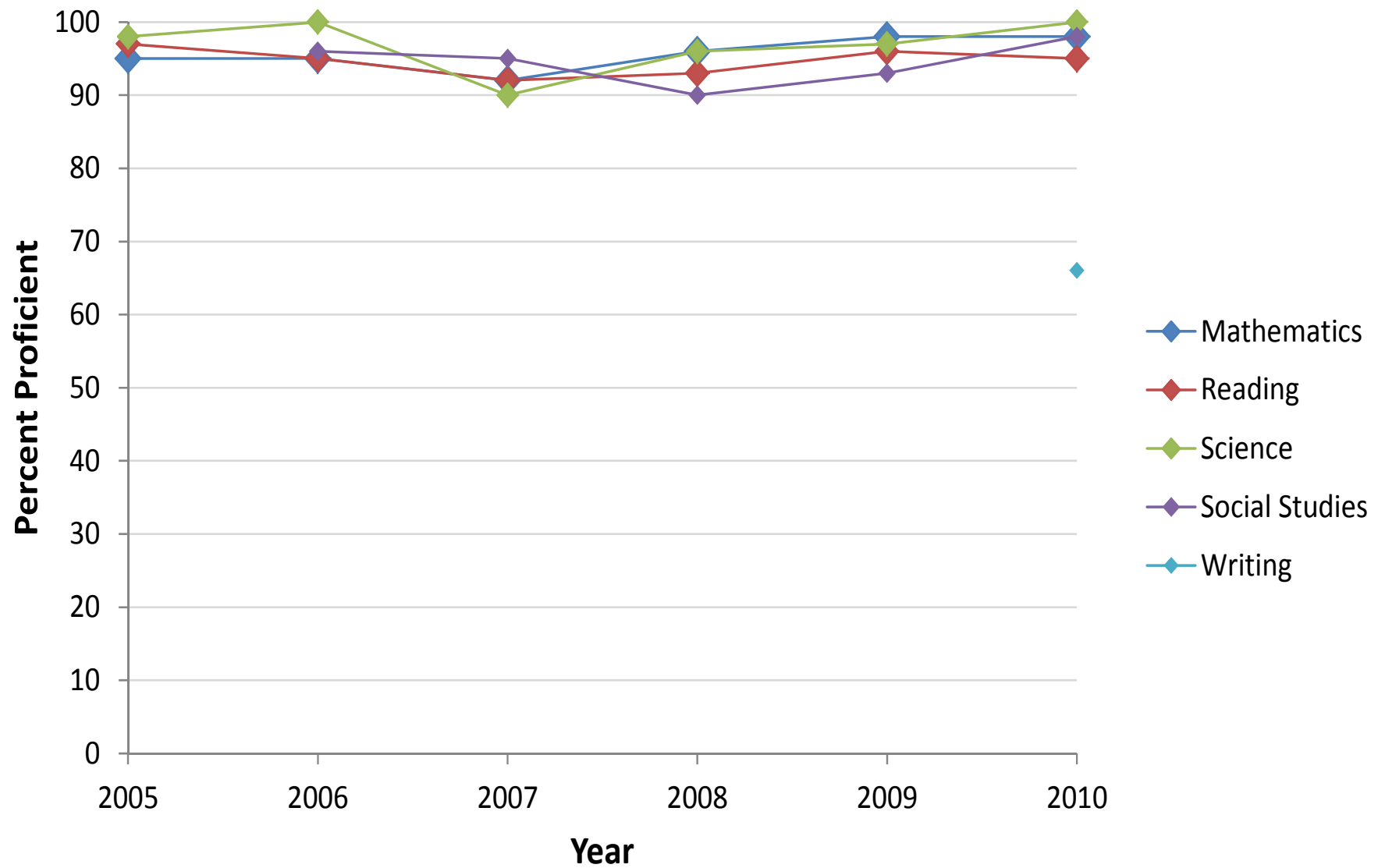
## School Observations

- Systematic approach to instruction including complete curricular alignment at all grade levels and cross-grade level gap analysis.
- Focus on identifying struggling students early, using Response to Intervention (RTI), and increasing instructional time for students who need additional support.
- Extremely dedicated staff and a persistent and focused effort to do what needs to happen for student success.
- Dynamic school culture, including teachers meeting weekly to look at data and curriculum.
- Excellent parental support.

Outcomes	Focal School	Comparison Group	
		Average	St. Dev.
Top to bottom ranking	99	72	16
MEAP data 2009 (Full Academic Year, Feeder School)	Focal School	Comparison Group	
		Average	St. Dev.
% proficient in mathematics	96	93	3
% proficient in reading	95	92	3
% proficient in science	98	91	5
% proficient in social studies	93	85	6
MEAP data 2010 (All Students, Tested School)	Focal School	Comparison Group	
		Average	St. Dev.
% proficient in mathematics	98	93	4
% proficient in reading	95	91	4
% proficient in science	100	88	7
% proficient in social studies	98	86	6
% proficient in writing	66	55	15
ACT data 2010 (All Students)	Focal School	Comparison Group	
		Average	St. Dev.
% meeting benchmark in English	--	--	--
% meeting benchmark in mathematics	--	--	--
% meeting benchmark in reading	--	--	--
% meeting benchmark in science	--	--	--
% meeting benchmarks in all subjects	--	--	--
MME data 2010 (Full Academic Year only)	Focal School	Comparison Group	
		Average	St. Dev.
% proficient in mathematics	--	--	--
% proficient in reading	--	--	--
% proficient in science	--	--	--
% proficient in social studies	--	--	--
% proficient in writing	--	--	--
2010 Graduation and Dropout Rates	Focal School	Comparison Group	
		Average	St. Dev.
4-year cohort graduation percent	--	--	--
4-year cohort dropout percent	--	--	--



# Glen Lake Elementary School - Glen Lake Community Schools - Traverse Bay Area ISD



# Deckerville Elementary School Deckerville Community School District

Sanilac ISD

## COMPARISON GROUP

- K-5/6 schools in distant rural areas
- State foundation allowance around \$7,350
- Enrollment around 350
- Minority around 5%
- Economic disadvantage around 59%
- Students with disabilities around 12%
- Limited English Proficient around 1%

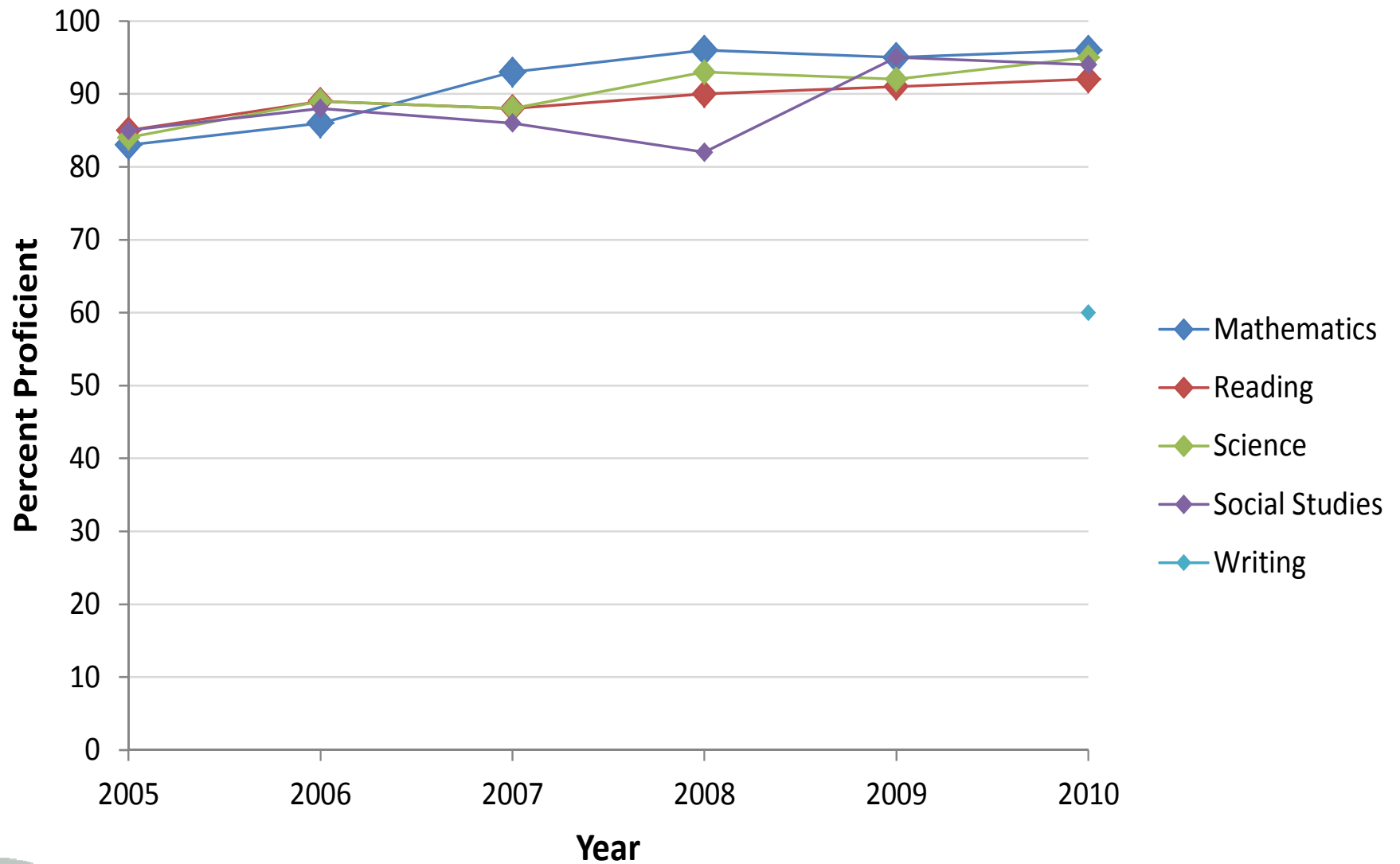
Locale	Focal School	Comparison Group	
		Percent in each locale	
Large city			
Midsize city			
Small city			
Suburb of large city			
Suburb of midsize city			
Suburb of small city			
Town on urban fringe			
Distant town			
Remote town			
Rural area on urban fringe			
Distant rural area	Yes	100%	
Remote rural area			
Grade Configuration	Focal School	Comparison Group	
		Percent w/each grade	
Includes grade K	Yes	100%	
Includes grade 1	Yes	100%	
Includes grade 2	Yes	100%	
Includes grade 3	Yes	100%	
Includes grade 4	Yes	100%	
Includes grade 5	Yes	90%	
Includes grade 6	Yes	53%	
Includes grade 7			
Includes grade 8			
Includes grade 9			
Includes grade 10			
Includes grade 11			
Includes grade 12			
Other	Focal School	Comparison Group	
		Average	St. Dev.
State foundation allowance	\$7,316	\$7,344	\$106
Enrollment	340	349	104
% minority	9%	5%	6%
% economic disadvantage	60%	59%	5%
% students with disabilities	13%	12%	3%
% limited English proficient	3%	1%	3%

## School Observations

- Focus on effective instruction – specifically “time on task.”
- Strong early literacy program including reading recovery, monthly grade level teacher meetings with reading teacher, use of paraprofessionals, early intervention, and ongoing PD.
- Effective school wide positive behavior support.
- Effective use of part time paraprofessionals in the kindergarten classrooms.
- Implementation of Michigan’s Integrated Behavior and Learning Support Initiative (MiBLSi) – the behavior part has been helpful.
- Set student achievement goals at “Advanced” rather than “Proficient” level.
- Administration has 28 years teaching experience so principal mentors teachers and can work with teachers having been in their shoes.
- Dedicated teaching staff.

Outcomes	Focal School	Comparison Group	
		Average	St. Dev.
Top to bottom ranking	76	46	14
MEAP data 2009 (Full Academic Year, Feeder School)	Focal School	Comparison Group	
		Average	St. Dev.
% proficient in mathematics	94	87	5
% proficient in reading	90	87	4
% proficient in science	92	84	8
% proficient in social studies	98	77	10
MEAP data 2010 (All Students, Tested School)	Focal School	Comparison Group	
		Average	St. Dev.
% proficient in mathematics	96	89	6
% proficient in reading	92	86	5
% proficient in science	95	83	7
% proficient in social studies	94	76	9
% proficient in writing	60	40	11
ACT data 2010 (All Students)	Focal School	Comparison Group	
		Average	St. Dev.
% meeting benchmark in English	--	--	--
% meeting benchmark in mathematics	--	--	--
% meeting benchmark in reading	--	--	--
% meeting benchmark in science	--	--	--
% meeting benchmarks in all subjects	--	--	--
MME data 2010 (Full Academic Year only)	Focal School	Comparison Group	
		Average	St. Dev.
% proficient in mathematics	--	--	--
% proficient in reading	--	--	--
% proficient in science	--	--	--
% proficient in social studies	--	--	--
% proficient in writing	--	--	--
2010 Graduation and Dropout Rates	Focal School	Comparison Group	
		Average	St. Dev.
4-year cohort graduation percent	--	--	--
4-year cohort dropout percent	--	--	--

# Deckerville Elementary School - Deckerville Community School District - Sanilac ISD



# Gladys Dillon Elementary School Carman-Ainsworth Community Schools

Genesee ISD

## COMPARISON GROUP

- K-3/4/5 schools in suburbs of large cities
- SFA around \$7,900
- Enrollment around 350
- Minority around 33%
- ED around 74%
- SWD around 22%
- LEP around 3%

Locale	Focal School	Comparison Group	
		Percent in each locale	
Large city			
Midsize city			
Small city			13%
Suburb of large city	Yes		83%
Suburb of midsize city			
Suburb of small city			
Town on urban fringe			
Distant town			
Remote town			
Rural area on urban fringe			
Distant rural area			3%
Remote rural area			
Grade Configuration	Focal School	Comparison Group	
		Percent w/each grade	
Includes grade K	Yes		93%
Includes grade 1	Yes		97%
Includes grade 2	Yes		100%
Includes grade 3	Yes		100%
Includes grade 4			97%
Includes grade 5			87%
Includes grade 6			17%
Includes grade 7			
Includes grade 8			
Includes grade 9			
Includes grade 10			
Includes grade 11			
Includes grade 12			
Other	Focal School	Comparison Group	
		Average	St. Dev.
State foundation allowance	\$8,229	\$7,908	\$435
Enrollment	310	345	109
% minority	26%	33%	16%
% economic disadvantage	74%	74%	6%
% students with disabilities	29%	22%	4%
% limited English proficient	0%	3%	3%

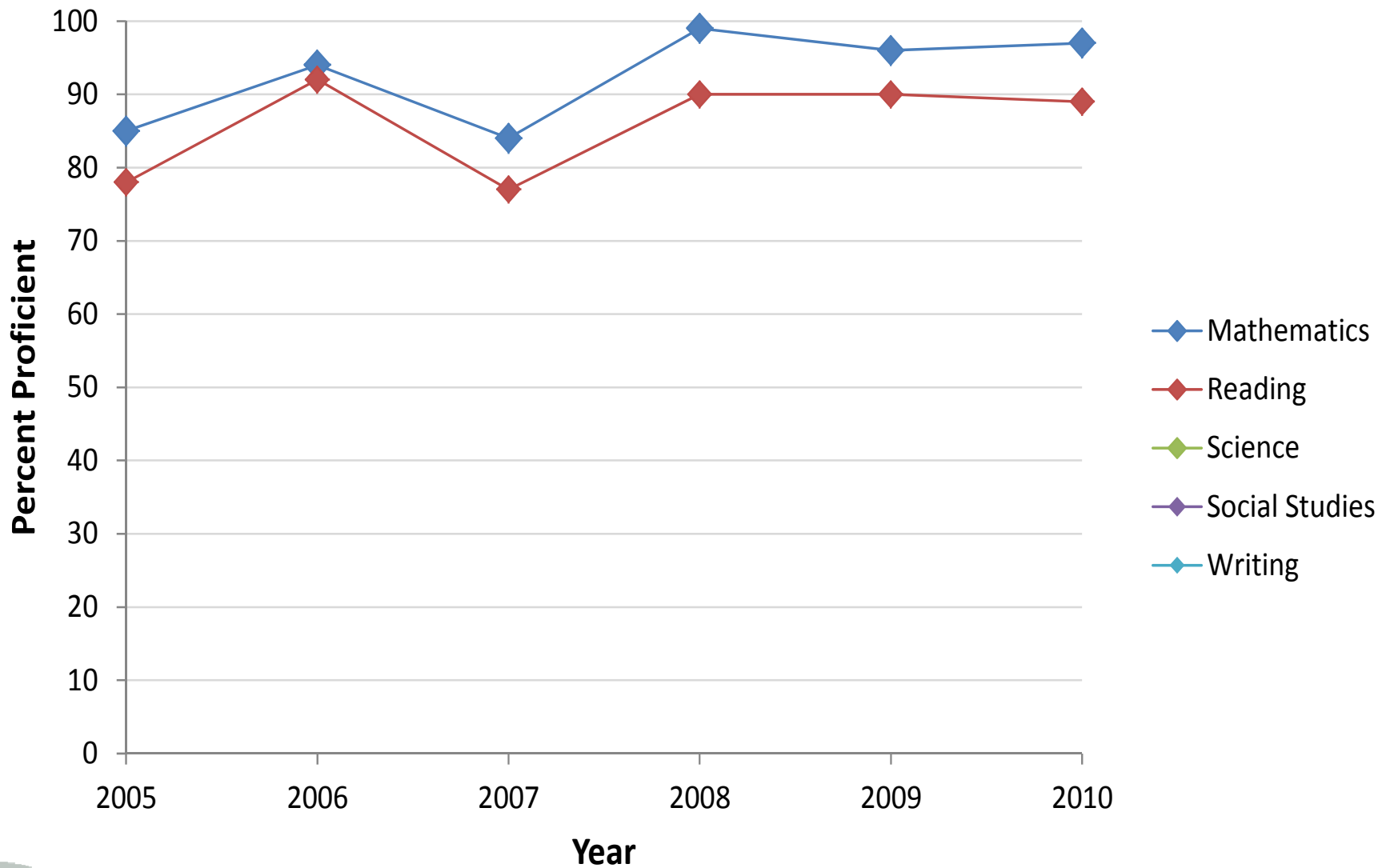
## School Observations

- School focuses on achieving one year of growth from the point at which students entered the school year.
- Because this school serves a transient population, staff focus heavily on growth and moving students forward from wherever they are.
- This school has high expectations for students and staff.
- This school provides weekly professional development time built into the schedule.
- This school focuses on adjusting instruction to support student achievement needs.

Outcomes	Focal School	Comparison Group	
		Average	St. Dev.
Top to bottom ranking	49	28	13
MEAP data 2009 (Full Academic Year, Feeder School)	Focal School	Comparison Group	
		Average	St. Dev.
% proficient in mathematics	97	83	5
% proficient in reading	87	81	4
% proficient in science	--	--	--
% proficient in social studies	--	--	--
MEAP data 2010 (All Students, Tested School)	Focal School	Comparison Group	
		Average	St. Dev.
% proficient in mathematics	97	87	6
% proficient in reading	89	79	6
% proficient in science	--	--	--
% proficient in social studies	--	--	--
% proficient in writing	--	--	--
ACT data 2010 (All Students)	Focal School	Comparison Group	
		Average	St. Dev.
% meeting benchmark in English	--	--	--
% meeting benchmark in mathematics	--	--	--
% meeting benchmark in reading	--	--	--
% meeting benchmark in science	--	--	--
% meeting benchmarks in all subjects	--	--	--
MME data 2010 (Full Academic Year only)	Focal School	Comparison Group	
		Average	St. Dev.
% proficient in mathematics	--	--	--
% proficient in reading	--	--	--
% proficient in science	--	--	--
% proficient in social studies	--	--	--
% proficient in writing	--	--	--
2010 Graduation and Dropout Rates	Focal School	Comparison Group	
		Average	St. Dev.
4-year cohort graduation percent	--	--	--
4-year cohort dropout percent	--	--	--



**Gladys Dillon Elementary School - Carman-Ainsworth Community Schools -  
Genesee ISD**



# Glenwood Elementary Kentwood Public Schools

Kent ISD

## COMPARISON GROUP

- K-5 schools in suburbs of large cities
- SFA around \$7,700
- Enrollment around 350
- Minority around 50%
- ED around 70%
- SWD around 13%
- LEP around 6%

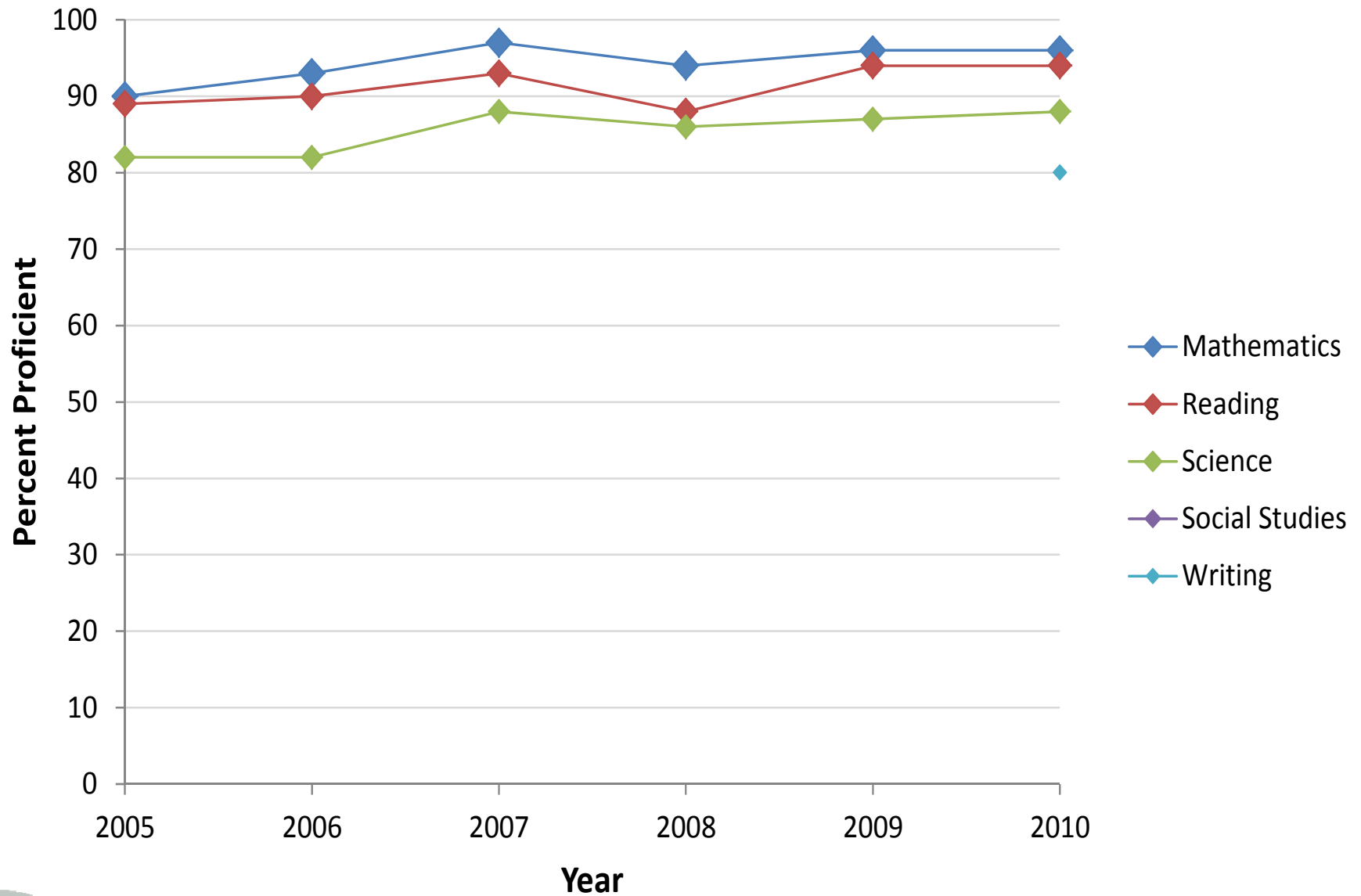
Locale	Focal School	Comparison Group Percent in each locale	
Large city			
Midsize city			
Small city			
Suburb of large city	Yes	100%	
Suburb of midsize city			
Suburb of small city			
Town on urban fringe			
Distant town			
Remote town			
Rural area on urban fringe			
Distant rural area			
Remote rural area			
Grade Configuration	Focal School	Comparison Group Percent w/each grade	
Includes grade K	Yes	97%	
Includes grade 1	Yes	100%	
Includes grade 2	Yes	100%	
Includes grade 3	Yes	100%	
Includes grade 4	Yes	100%	
Includes grade 5	Yes	100%	
Includes grade 6		10%	
Includes grade 7			
Includes grade 8			
Includes grade 9			
Includes grade 10			
Includes grade 11			
Includes grade 12			
Other	Focal School	Comparison Group Average      St. Dev.	
State foundation allowance	\$7,559	\$7,737	\$310
Enrollment	324	347	90
% minority	60%	50%	25%
% economic disadvantage	70%	70%	7%
% students with disabilities	12%	13%	3%
% limited English proficient	8%	6%	4%

## School Observations

- Data-driven and student-focused instruction, with assessments closely linked to instruction and progress monitored regularly.
- Targeted instruction to meet student needs.
- High expectations on student achievement and behavior.
- Uses research-based best practices, like the Linda Mood-Bell program from California for special education, level literacy kits for ELA which focuses on student level achievement in an after school program that meets 4 days a week.
- Uses the Joyce Epstein model for parent involvement.
- Has a 21st century arts program with extended learning for our highest at risk kids.

Outcomes	Focal School	Comparison Group	
		Average	St. Dev.
Top to bottom ranking	93	36	20
MEAP data 2009 (Full Academic Year, Feeder School)	Focal School	Comparison Group	
		Average	St. Dev.
% proficient in mathematics	96	83	7
% proficient in reading	95	83	5
% proficient in science	89	73	10
% proficient in social studies	72	66	12
MEAP data 2010 (All Students, Tested School)	Focal School	Comparison Group	
		Average	St. Dev.
% proficient in mathematics	96	86	7
% proficient in reading	94	79	7
% proficient in science	88	71	13
% proficient in social studies	--	--	--
% proficient in writing	80	36	13
ACT data 2010 (All Students)	Focal School	Comparison Group	
		Average	St. Dev.
% meeting benchmark in English	--	--	--
% meeting benchmark in mathematics	--	--	--
% meeting benchmark in reading	--	--	--
% meeting benchmark in science	--	--	--
% meeting benchmarks in all subjects	--	--	--
MME data 2010 (Full Academic Year only)	Focal School	Comparison Group	
		Average	St. Dev.
% proficient in mathematics	--	--	--
% proficient in reading	--	--	--
% proficient in science	--	--	--
% proficient in social studies	--	--	--
% proficient in writing	--	--	--
2010 Graduation and Dropout Rates	Focal School	Comparison Group	
		Average	St. Dev.
4-year cohort graduation percent	--	--	--
4-year cohort dropout percent	--	--	--

### Glenwood Elementary - Kentwood Public Schools - Kent ISD



# Meyer Elementary School Croswell-Lexington Community Schools

Sanilac ISD

## COMPARISON GROUP

- K-4/5 schools in suburbs of a small city
- SFA around \$7,500
- Enrollment around 425
- Minority around 13%
- ED around 48%
- SWD around 14%
- LEP around 1%

Locale	Focal School	Comparison Group Percent in each locale	
Large city			
Midsize city			
Small city			
Suburb of large city			
Suburb of midsize city			
Suburb of small city	Yes	100%	
Town on urban fringe			
Distant town			
Remote town			
Rural area on urban fringe			
Distant rural area			
Remote rural area			
Grade Configuration	Focal School	Comparison Group Percent w/each grade	
Includes grade K	Yes	90%	
Includes grade 1	Yes	93%	
Includes grade 2	Yes	93%	
Includes grade 3	Yes	100%	
Includes grade 4	Yes	100%	
Includes grade 5		90%	
Includes grade 6		20%	
Includes grade 7		7%	
Includes grade 8		7%	
Includes grade 9			
Includes grade 10			
Includes grade 11			
Includes grade 12			
Other	Focal School	Average	St. Dev.
State foundation allowance	\$7,316	\$7,460	\$282
Enrollment	362	423	123
% minority	2%	13%	11%
% economic disadvantage	54%	48%	13%
% students with disabilities	11%	14%	5%
% limited English proficient	0%	1%	3%

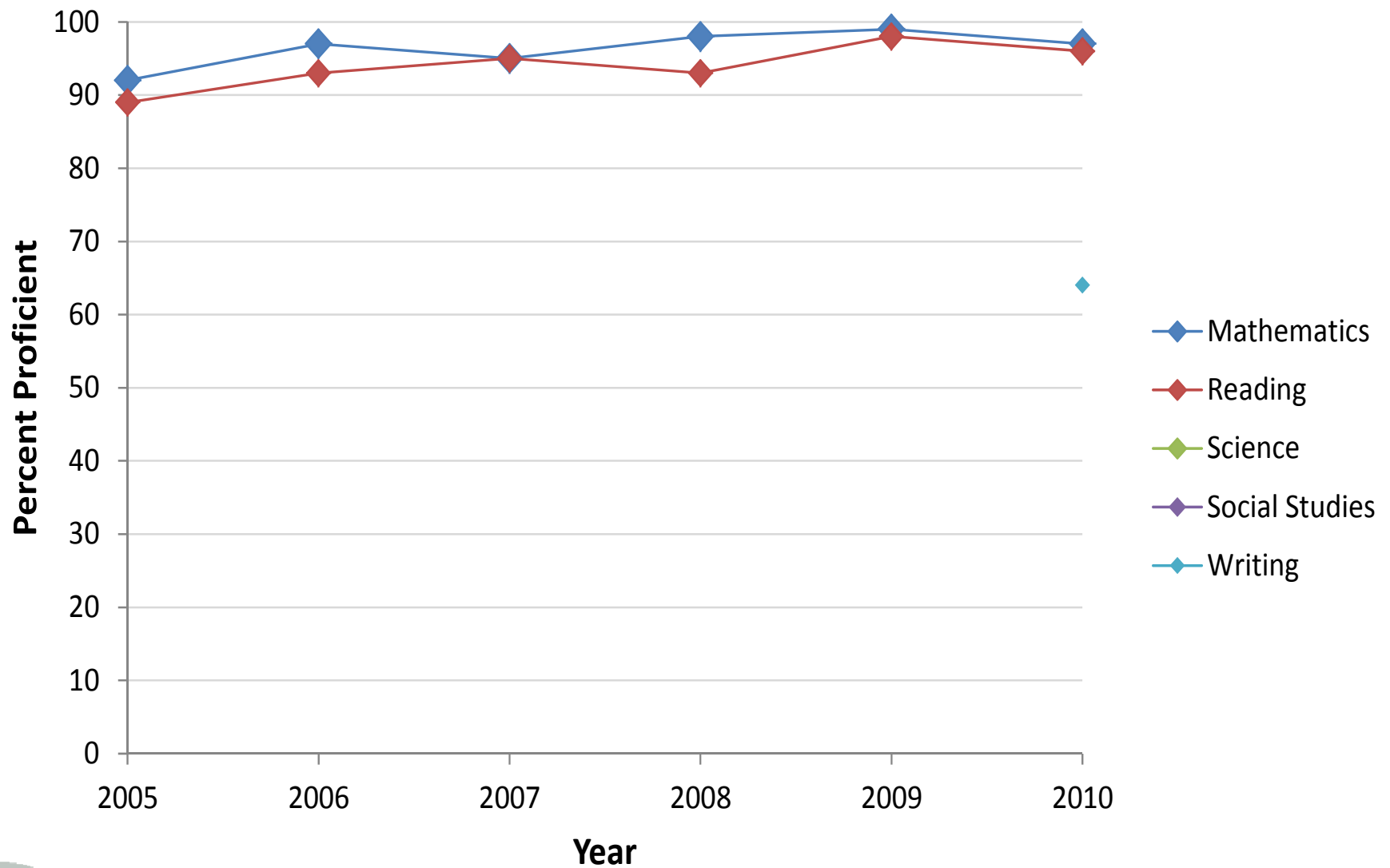
## School Observations

- Excellent and collegial staff with strong collaboration, using a professional learning community format.
- Excellent student support and communication.
- Three-tiered intervention model.
- Student benchmarking, including benchmarking in reading using a formalized Student Support Process which keeps students ready for a Tier 2 intervention.
- Open door policy and excellent communication with parents regarding progress—parents are free to visit anytime.
- Principal and staff are very proud of the achievements of this school, and especially in light of increasing economic hardships in Michigan.

Outcomes	Focal School	Comparison Group	
		Average	St. Dev.
Top to bottom ranking	79	51	23
MEAP data 2009 (Full Academic Year, Feeder School)	Focal School	Comparison Group	
		Average	St. Dev.
% proficient in mathematics	96	88	6
% proficient in reading	96	88	4
% proficient in science	98	85	7
% proficient in social studies	--	--	--
MEAP data 2010 (All Students, Tested School)	Focal School	Comparison Group	
		Average	St. Dev.
% proficient in mathematics	97	90	7
% proficient in reading	96	87	6
% proficient in science	--	--	--
% proficient in social studies	--	--	--
% proficient in writing	64	50	15
ACT data 2010 (All Students)	Focal School	Comparison Group	
		Average	St. Dev.
% meeting benchmark in English	--	--	--
% meeting benchmark in mathematics	--	--	--
% meeting benchmark in reading	--	--	--
% meeting benchmark in science	--	--	--
% meeting benchmarks in all subjects	--	--	--
MME data 2010 (Full Academic Year only)	Focal School	Comparison Group	
		Average	St. Dev.
% proficient in mathematics	--	--	--
% proficient in reading	--	--	--
% proficient in science	--	--	--
% proficient in social studies	--	--	--
% proficient in writing	--	--	--
2010 Graduation and Dropout Rates	Focal School	Comparison Group	
		Average	St. Dev.
4-year cohort graduation percent	--	--	--
4-year cohort dropout percent	--	--	--



# Meyer Elementary School - Croswell-Lexington Community Schools - Sanilac ISD



# Frankfort Elementary School Frankfort-Elberta Area Schools

Traverse Bay Area ISD

## COMPARISON GROUP

- Remote rural K-4/5/6 schools
- SFA around \$7,450
- Enrollment around 270
- Minority around 9%
- ED around 60%
- SWD around 13%
- LEP around 0%

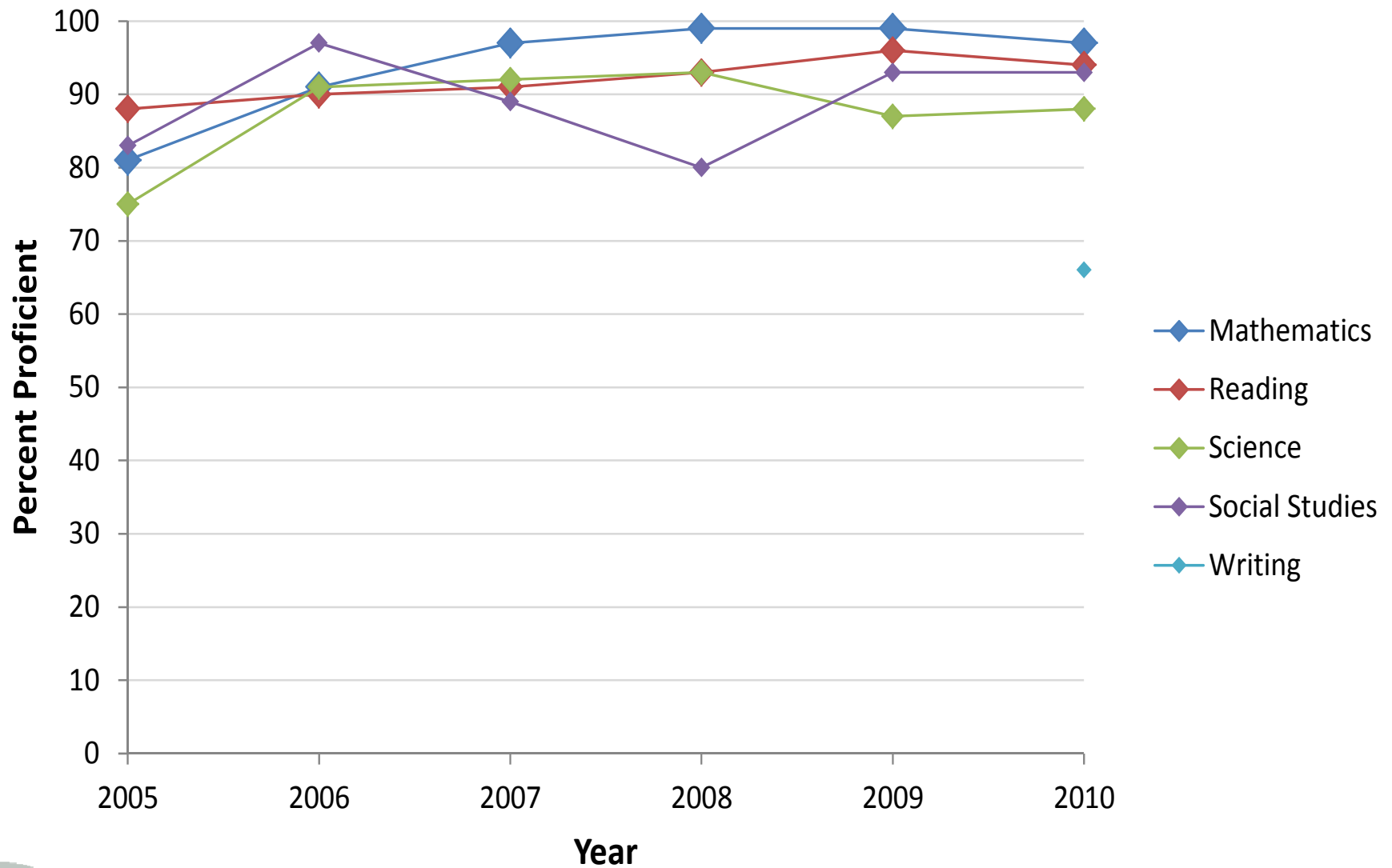
Locale	Focal School	Comparison Group	
		Percent in each locale	
Large city			
Midsize city			
Small city			
Suburb of large city			
Suburb of midsize city			
Suburb of small city			
Town on urban fringe			
Distant town			
Remote town			
Rural area on urban fringe			
Distant rural area			
Remote rural area	Yes	100%	
Grade Configuration	Focal School	Comparison Group	
		Percent w/each grade	
Includes grade K	Yes	100%	
Includes grade 1	Yes	97%	
Includes grade 2	Yes	100%	
Includes grade 3	Yes	100%	
Includes grade 4	Yes	100%	
Includes grade 5	Yes	93%	
Includes grade 6	Yes	47%	
Includes grade 7		3%	
Includes grade 8		3%	
Includes grade 9			
Includes grade 10			
Includes grade 11			
Includes grade 12			
Other	Focal School	Comparison Group	
		Average	St. Dev.
State foundation allowance	\$8,220	\$7,455	\$387
Enrollment	287	266	111
% minority	14%	9%	8%
% economic disadvantage	55%	60%	7%
% students with disabilities	13%	13%	4%
% limited English proficient	0%	0%	0%

## School Observations

- School has outstanding staff who go above and beyond with time and effort to support student learning.
- The district superintendent specifically praised the school principal, citing him as an exceptionally strong leader.
- The school capitalizes on small class sizes to individualize instruction.
- The school fosters a caring atmosphere.
- Adopted AIMSweb (a benchmark assessment and student progress monitoring program), and was named as a special initiative which has been a factor in success.
- Traverse Bay ISD is extremely supportive and the district reports great benefit from that support.
- Strong student intervention program to ensure no one "falls through the cracks."

Outcomes	Focal School	Comparison Group	
		Average	St. Dev.
Top to bottom ranking	89	52	24
MEAP data 2009 (Full Academic Year, Feeder School)	Focal School	Comparison Group	
		Average	St. Dev.
% proficient in mathematics	98	88	5
% proficient in reading	96	89	5
% proficient in science	91	88	6
% proficient in social studies	95	77	10
MEAP data 2010 (All Students, Tested School)	Focal School	Comparison Group	
		Average	St. Dev.
% proficient in mathematics	97	91	6
% proficient in reading	94	88	5
% proficient in science	88	84	9
% proficient in social studies	93	81	7
% proficient in writing	66	41	10
ACT data 2010 (All Students)	Focal School	Comparison Group	
		Average	St. Dev.
% meeting benchmark in English	--	--	--
% meeting benchmark in mathematics	--	--	--
% meeting benchmark in reading	--	--	--
% meeting benchmark in science	--	--	--
% meeting benchmarks in all subjects	--	--	--
MME data 2010 (Full Academic Year only)	Focal School	Comparison Group	
		Average	St. Dev.
% proficient in mathematics	--	--	--
% proficient in reading	--	--	--
% proficient in science	--	--	--
% proficient in social studies	--	--	--
% proficient in writing	--	--	--
2010 Graduation and Dropout Rates	Focal School	Comparison Group	
		Average	St. Dev.
4-year cohort graduation percent	--	--	--
4-year cohort dropout percent	--	--	--

**Frankfort Elementary School - Frankfort-Elberta Area Schools - Traverse Bay  
Area ISD**



# North Godwin Elementary School Godwin Heights Public Schools

Kent ISD

## COMPARISON GROUP

- K-5/6 schools in small cities
- SFA around \$7,600
- Enrollment around 425
- Minority around 66%
- ED around 82%
- SWD around 14%
- LEP around 20%

Locale	Focal School	Comparison Group Percent in each locale	
Large city			
Midsize city			
Small city	Yes	87%	
Suburb of large city		13%	
Suburb of midsize city			
Suburb of small city			
Town on urban fringe			
Distant town			
Remote town			
Rural area on urban fringe			
Distant rural area			
Remote rural area			
Grade Configuration	Focal School	Comparison Group Percent w/each grade	
Includes grade K	Yes	97%	
Includes grade 1	Yes	100%	
Includes grade 2	Yes	100%	
Includes grade 3	Yes	100%	
Includes grade 4	Yes	100%	
Includes grade 5	Yes	93%	
Includes grade 6	Yes	43%	
Includes grade 7		17%	
Includes grade 8		10%	
Includes grade 9			
Includes grade 10			
Includes grade 11			
Includes grade 12			
Other	Focal School	Average	St. Dev.
State foundation allowance	\$8,241	\$7,638	\$342
Enrollment	397	433	131
% minority	62%	66%	19%
% economic disadvantage	77%	82%	6%
% students with disabilities	13%	14%	3%
% limited English proficient	29%	20%	9%

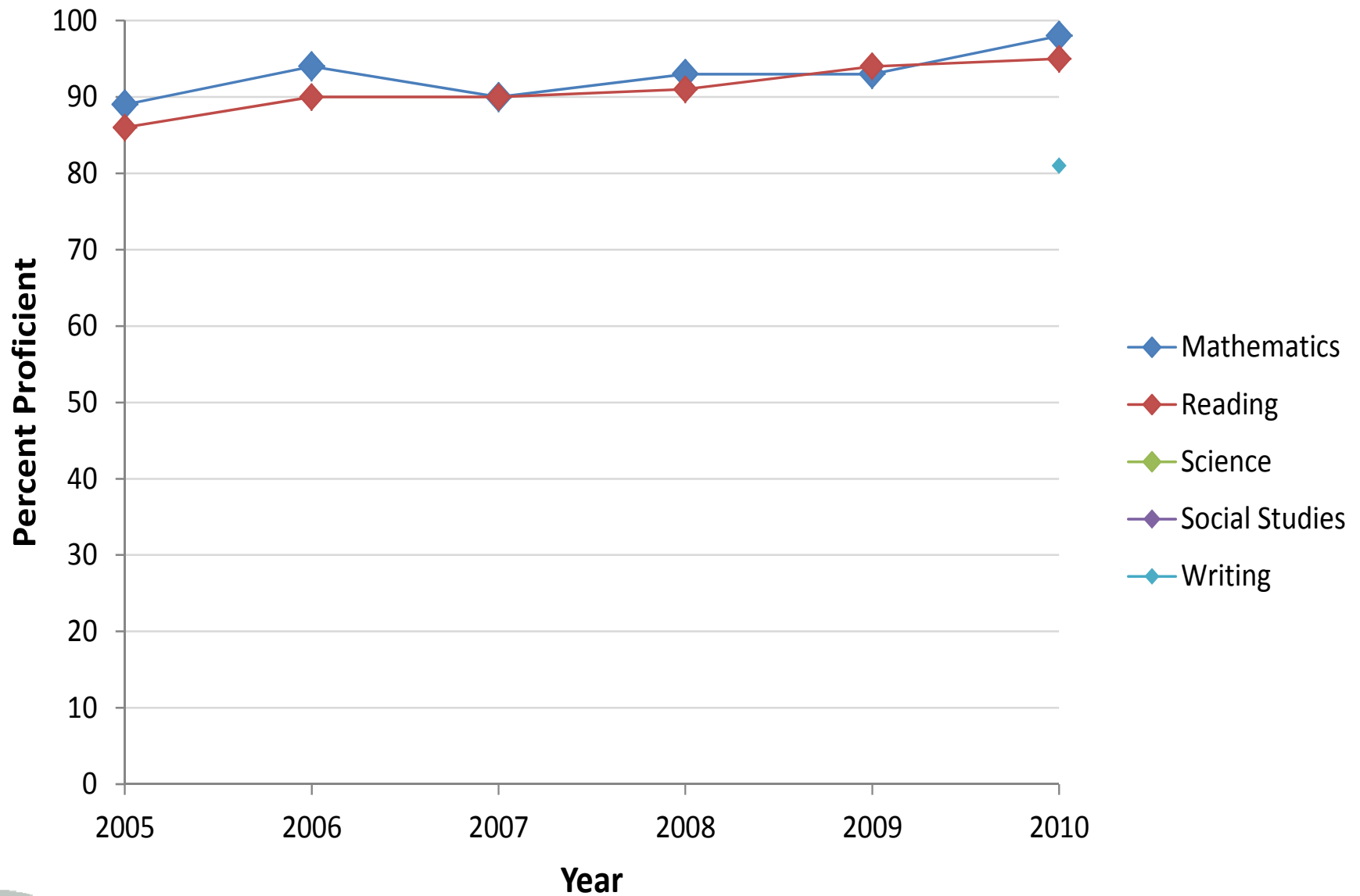
## School Observations

- Instruction is modified based on state and local data.
- Focus on literacy and the common core state standards.
- Collaboration with other schools and ISD for school improvement.
- "Failure is not an option."
- High population of English language learners (ELLs), exceptional collaboration of general education and ELL teachers.
- Set goals for individual students and get data on student performance. Data are shared with students and used daily!
- Strong ELL program & a "Parents as Teachers" program to help their bilingual parents.
- Instructional specialists and literacy coaches available to work with teachers regularly.
- Response to Intervention (RTI) progress with support from Kent ISD.

Outcomes	Focal School	Comparison Group	
		Average	St. Dev.
Top to bottom ranking	53	26	20
MEAP data 2009 (Full Academic Year, Feeder School)	Focal School	Comparison Group	
		Average	St. Dev.
% proficient in mathematics	92	80	10
% proficient in reading	95	77	9
% proficient in science	94	65	17
% proficient in social studies	94	55	14
MEAP data 2010 (All Students, Tested School)	Focal School	Comparison Group	
		Average	St. Dev.
% proficient in mathematics	98	83	9
% proficient in reading	95	75	9
% proficient in science	--	--	--
% proficient in social studies	--	--	--
% proficient in writing	81	32	14
ACT data 2010 (All Students)	Focal School	Comparison Group	
		Average	St. Dev.
% meeting benchmark in English	--	--	--
% meeting benchmark in mathematics	--	--	--
% meeting benchmark in reading	--	--	--
% meeting benchmark in science	--	--	--
% meeting benchmarks in all subjects	--	--	--
MME data 2010 (Full Academic Year only)	Focal School	Comparison Group	
		Average	St. Dev.
% proficient in mathematics	--	--	--
% proficient in reading	--	--	--
% proficient in science	--	--	--
% proficient in social studies	--	--	--
% proficient in writing	--	--	--
2010 Graduation and Dropout Rates	Focal School	Comparison Group	
		Average	St. Dev.
4-year cohort graduation percent	--	--	--
4-year cohort dropout percent	--	--	--



# North Godwin Elementary School - Godwin Heights Public Schools - Kent ISD



# Winn Elementary School Shepherd Public School District

Gratiot-Isabella RESD

## COMPARISON GROUP

- K-5 schools in distant rural areas
- State foundation allowance around \$7,316
- Enrollment around 325
- Minority around 7%
- Economic disadvantage around 41%
- Students with disabilities around 14%
- Limited English proficient around 1%

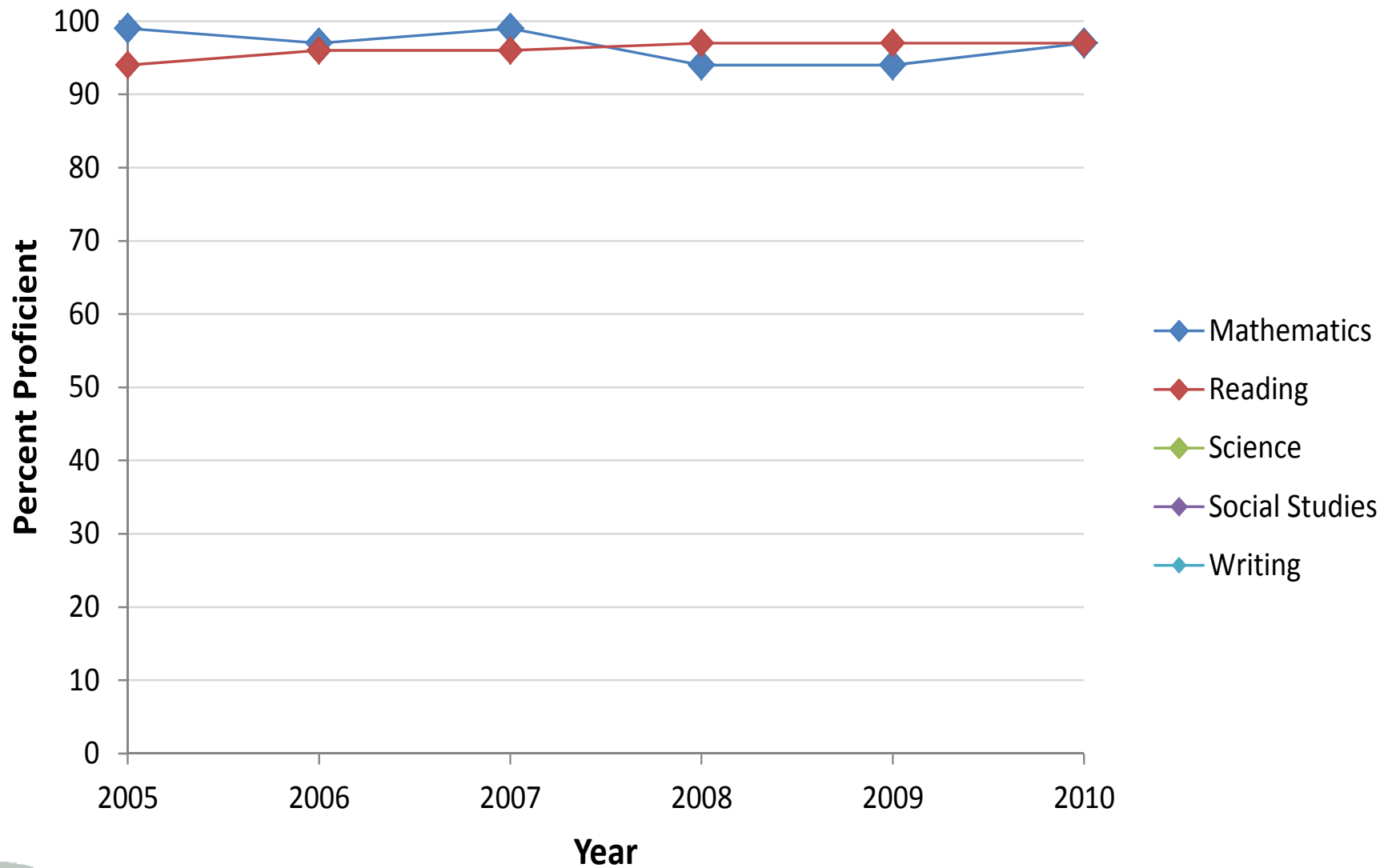
Locale	Focal School	Comparison Group	
		Percent in each locale	
Large city			
Midsize city			
Small city			
Suburb of large city			
Suburb of midsize city			
Suburb of small city			
Town on urban fringe			
Distant town			
Remote town			
Rural area on urban fringe			
Distant rural area	Yes	100%	
Remote rural area			
Grade Configuration	Focal School	Comparison Group	
		Percent w/each grade	
Includes grade K	Yes	100%	
Includes grade 1	Yes	100%	
Includes grade 2	Yes	100%	
Includes grade 3	Yes	100%	
Includes grade 4	Yes	100%	
Includes grade 5	Yes	90%	
Includes grade 6		3%	
Includes grade 7			
Includes grade 8			
Includes grade 9			
Includes grade 10			
Includes grade 11			
Includes grade 12			
Other	Focal School	Comparison Group	
		Average	St. Dev.
State foundation allowance	\$7,316	\$7,369	\$199
Enrollment	150	333	119
% minority	3%	7%	6%
% economic disadvantage	39%	41%	6%
% students with disabilities	18%	14%	4%
% limited English proficient	0%	1%	2%

## School Observations

- The school has a strong sense of community--between staff and students, among staff, and between staff and student families.
- Has a professional learning environment where the entire staff is involved in analyzing student data and test results.
- According to the ISD superintendent, one factor in their success is the strong school leadership, which is very focused on achievement and willing to assist teachers with needs and concerns.
- The leadership fosters a sense of community and pride in student achievement.
- Response to Intervention has been a successful initiative that allows identification of students and appropriate supports before the student loses ground.

Outcomes	Focal School	Comparison Group	
		Average	St. Dev.
Top to bottom ranking	92	63	18
MEAP data 2009 (Full Academic Year, Feeder School)	Focal School	Comparison Group	
		Average	St. Dev.
% proficient in mathematics	97	91	4
% proficient in reading	99	92	3
% proficient in science	--	--	--
% proficient in social studies	--	--	--
MEAP data 2010 (All Students, Tested School)	Focal School	Comparison Group	
		Average	St. Dev.
% proficient in mathematics	97	92	4
% proficient in reading	97	90	4
% proficient in science	--	--	--
% proficient in social studies	--	--	--
% proficient in writing	--	--	--
ACT data 2010 (All Students)	Focal School	Comparison Group	
		Average	St. Dev.
% meeting benchmark in English	--	--	--
% meeting benchmark in mathematics	--	--	--
% meeting benchmark in reading	--	--	--
% meeting benchmark in science	--	--	--
% meeting benchmarks in all subjects	--	--	--
MME data 2010 (Full Academic Year only)	Focal School	Comparison Group	
		Average	St. Dev.
% proficient in mathematics	--	--	--
% proficient in reading	--	--	--
% proficient in science	--	--	--
% proficient in social studies	--	--	--
% proficient in writing	--	--	--
2010 Graduation and Dropout Rates	Focal School	Comparison Group	
		Average	St. Dev.
4-year cohort graduation percent	--	--	--
4-year cohort dropout percent	--	--	--

# Winn Elementary School - Shepherd Public School District - Gratiot-Isabella RES



# Brown Elementary School Byron Center Public Schools

Kent ISD

## COMPARISON GROUP

- K-4/5 schools in suburbs of large cities
- State foundation allowance around \$7,750
- Enrollment around 425
- Minority around 14%
- Economically disadvantaged around 28%
- Students with disabilities around 12%
- Limited English proficient around 2%

Locale	Focal School	Comparison Group Percent in each locale	
Large city			
Midsize city			
Small city			
Suburb of large city	Yes	100%	
Suburb of midsize city			
Suburb of small city			
Town on urban fringe			
Distant town			
Remote town			
Rural area on urban fringe			
Distant rural area			
Remote rural area			
Grade Configuration	Focal School	Comparison Group Percent w/each grade	
Includes grade K	Yes	100%	
Includes grade 1	Yes	100%	
Includes grade 2	Yes	100%	
Includes grade 3	Yes	100%	
Includes grade 4	Yes	100%	
Includes grade 5		77%	
Includes grade 6			
Includes grade 7			
Includes grade 8			
Includes grade 9			
Includes grade 10			
Includes grade 11			
Includes grade 12			
Other	Focal School	Average	St. Dev.
State foundation allowance	\$7,886	\$7,755	\$340
Enrollment	484	425	75
% minority	13%	14%	6%
% economic disadvantage	27%	28%	4%
% students with disabilities	13%	12%	3%
% limited English proficient	3%	2%	2%

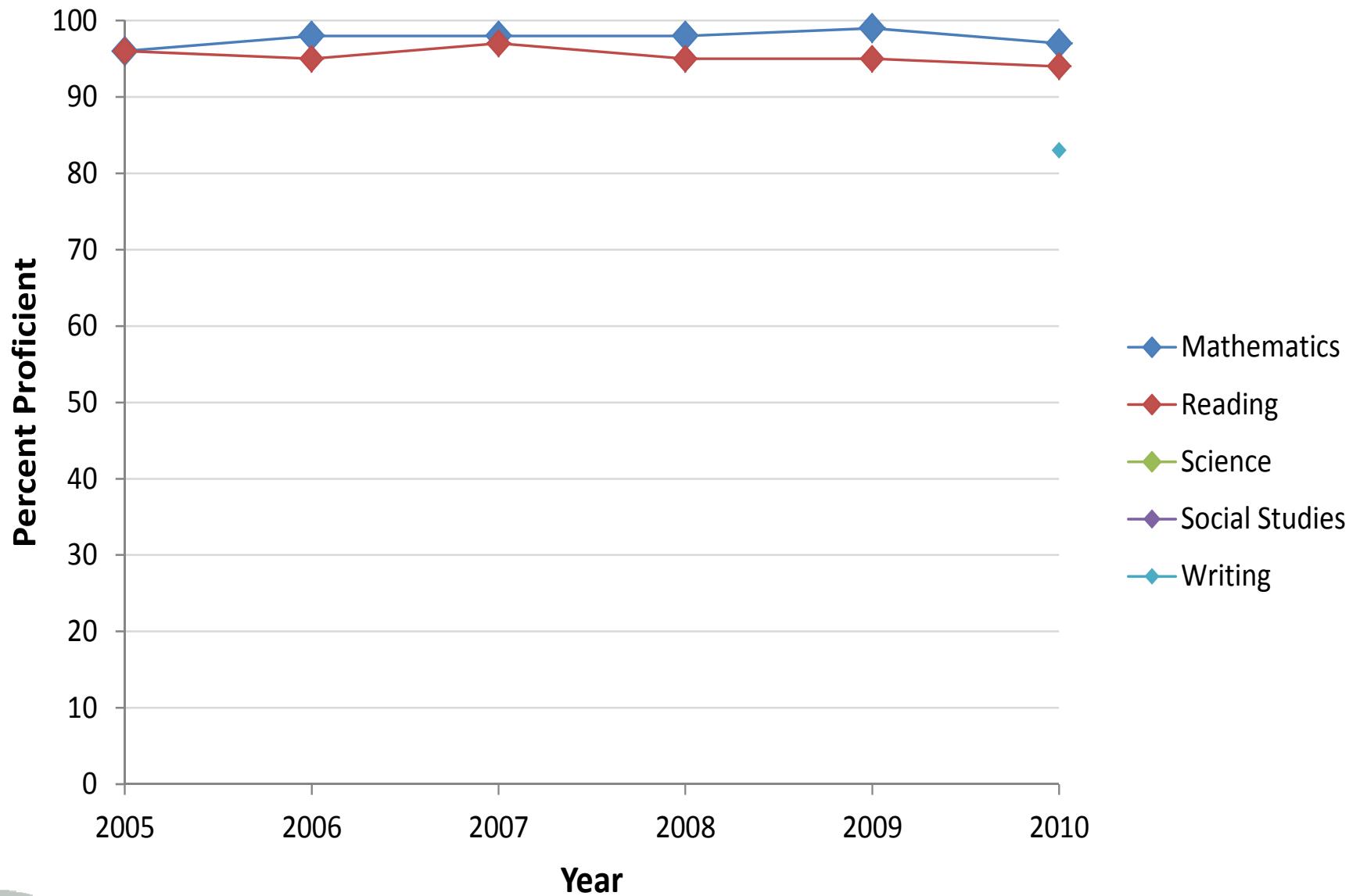
## School Observations

- Use the four R's: relationships, rigor, relevance and reflection.
- Tailor student education for jobs of the future.
- Pays close attention to both students who need enrichment and students who need challenges.
- "Kids of Character" program helps promote a broad level of achievement.
- Positive energy and trust are part of the school culture.
- Parental involvement and appreciation from the school.
- Caring Superintendent who ensures that achievement begins at the top.
- Extensive enrichment activities.
- Focus on differentiation.

Outcomes	Focal School	Comparison Group	
		Average	St. Dev.
Top to bottom ranking	89	72	17
MEAP data 2009 (Full Academic Year, Feeder School)	Focal School	Comparison Group	
		Average	St. Dev.
% proficient in mathematics	97	93	3
% proficient in reading	96	92	3
% proficient in science	95	89	6
% proficient in social studies	--	--	--
MEAP data 2010 (All Students, Tested School)	Focal School	Comparison Group	
		Average	St. Dev.
% proficient in mathematics	97	95	4
% proficient in reading	94	92	3
% proficient in science	--	--	--
% proficient in social studies	--	--	--
% proficient in writing	83	58	12
ACT data 2010 (All Students)	Focal School	Comparison Group	
		Average	St. Dev.
% meeting benchmark in English	--	--	--
% meeting benchmark in mathematics	--	--	--
% meeting benchmark in reading	--	--	--
% meeting benchmark in science	--	--	--
% meeting benchmarks in all subjects	--	--	--
MME data 2010 (Full Academic Year only)	Focal School	Comparison Group	
		Average	St. Dev.
% proficient in mathematics	--	--	--
% proficient in reading	--	--	--
% proficient in science	--	--	--
% proficient in social studies	--	--	--
% proficient in writing	--	--	--
2010 Graduation and Dropout Rates	Focal School	Comparison Group	
		Average	St. Dev.
4-year cohort graduation percent	--	--	--
4-year cohort dropout percent	--	--	--



### Brown Elementary School - Byron Center Public Schools - Kent ISD



# Jeffers Elementary School Spring Lake Public Schools

Ottawa Area ISD

## COMPARISON GROUP

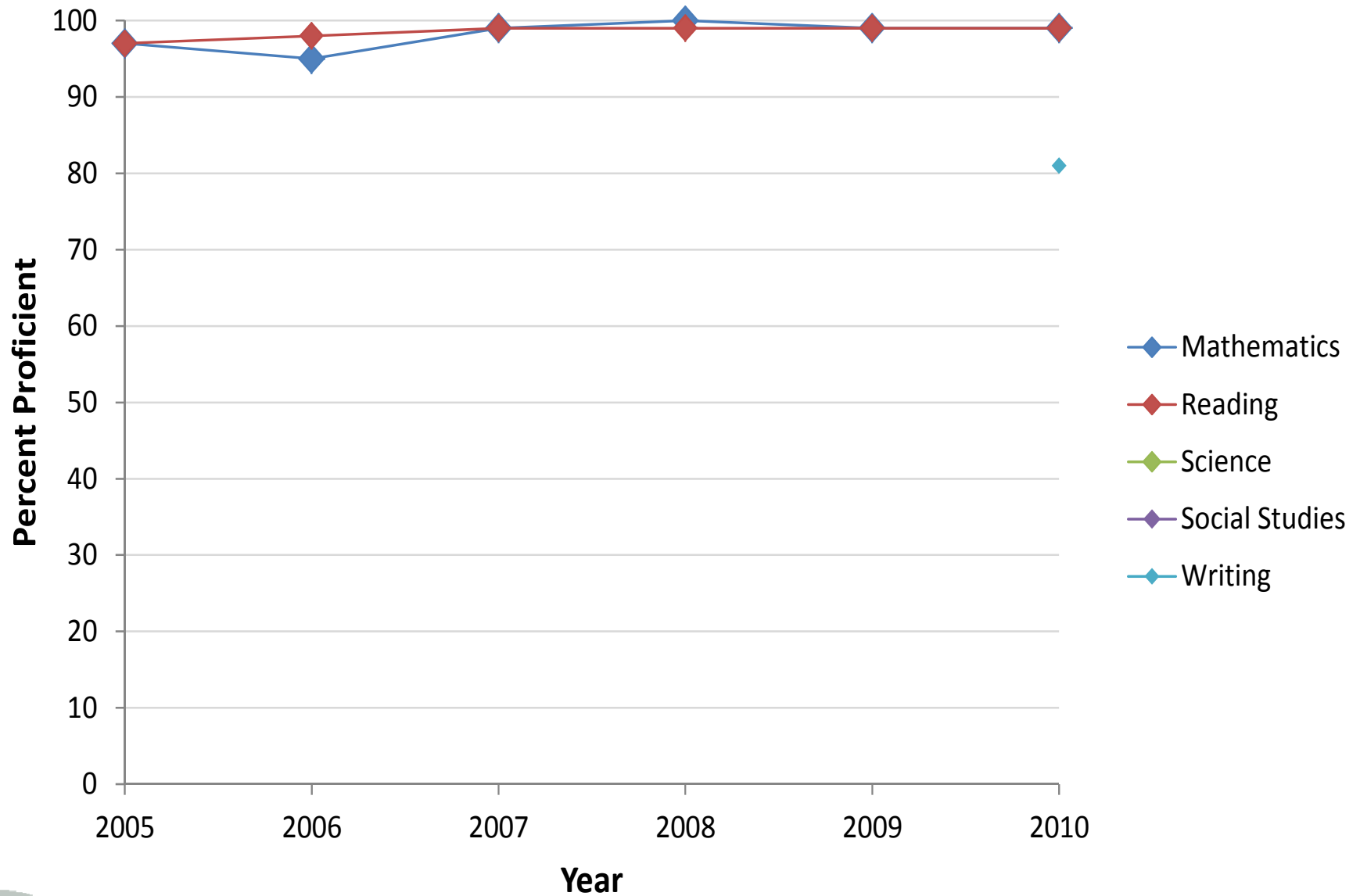
- Rural K-4/5 schools on an urban fringe
- SFA around \$7,400
- Enrollment around 425
- Minority around 6%
- ED around 20%
- SWD around 12%
- LEP around 1%

Locale	Focal School	Comparison Group	
		Percent in each locale	
Large city			
Midsize city			
Small city			
Suburb of large city			
Suburb of midsize city			
Suburb of small city			
Town on urban fringe			
Distant town			
Remote town			
Rural area on urban fringe	Yes	100%	
Distant rural area			
Remote rural area			
Grade Configuration	Focal School	Comparison Group	
		Percent w/each grade	
Includes grade K	Yes	100%	
Includes grade 1	Yes	100%	
Includes grade 2	Yes	100%	
Includes grade 3	Yes	100%	
Includes grade 4	Yes	97%	
Includes grade 5		83%	
Includes grade 6			
Includes grade 7			
Includes grade 8			
Includes grade 9			
Includes grade 10			
Includes grade 11			
Includes grade 12			
Other	Focal School	Comparison Group	
		Average	St. Dev.
State foundation allowance	\$7,350	\$7,407	\$176
Enrollment	398	430	127
% minority	5%	6%	3%
% economic disadvantage	18%	20%	5%
% students with disabilities	12%	12%	4%
% limited English proficient	0%	1%	1%

- They cite their “Big Three” factors for their success: excellent teachers, strong community volunteer network, and extensive parental involvement.
- Children are motivated through positive modeling by the Big Three (teachers, parents and community).
- Many special initiatives, including Response to Intervention, Kids Hope program (sponsored by local churches), Reading Host, and Delta Math through Ottawa ISD.
- Focus on students who are struggling, and provide extra attention to those students.
- High expectations for all, while avoiding high pressure situations.
- The community values education and parents want students to be challenged.

Outcomes	Focal School	Comparison Group	
		Average	St. Dev.
Top to bottom ranking	97	81	13
MEAP data 2009 (Full Academic Year, Feeder School)	Focal School	Comparison Group	
		Average	St. Dev.
% proficient in mathematics	99	95	3
% proficient in reading	99	94	3
% proficient in science	97	94	3
% proficient in social studies	--	--	--
MEAP data 2010 (All Students, Tested School)	Focal School	Comparison Group	
		Average	St. Dev.
% proficient in mathematics	99	96	3
% proficient in reading	99	94	3
% proficient in science	--	--	--
% proficient in social studies	--	--	--
% proficient in writing	81	62	11
ACT data 2010 (All Students)	Focal School	Comparison Group	
		Average	St. Dev.
% meeting benchmark in English	--	--	--
% meeting benchmark in mathematics	--	--	--
% meeting benchmark in reading	--	--	--
% meeting benchmark in science	--	--	--
% meeting benchmarks in all subjects	--	--	--
MME data 2010 (Full Academic Year only)	Focal School	Comparison Group	
		Average	St. Dev.
% proficient in mathematics	--	--	--
% proficient in reading	--	--	--
% proficient in science	--	--	--
% proficient in social studies	--	--	--
% proficient in writing	--	--	--
2010 Graduation and Dropout Rates	Focal School	Comparison Group	
		Average	St. Dev.
4-year cohort graduation percent	--	--	--
4-year cohort dropout percent	--	--	--

### Jeffers Elementary School - Spring Lake Public Schools - Ottawa Area ISD



# Angell School Ann Arbor Public Schools

Washtenaw ISD

## COMPARISON GROUP:

- K-5 schools in midsize cities
- Foundation allowance of around \$9,300
- Enrollment around 400
- Minority around 34%
- Economic disadvantage around 17%
- Students with disabilities around 11%
- Limited English proficient around 6%
- Note on Angell School:  
This school serves a wide range of students, including many children of UM graduate students, foreign-born students, and students spanning the income range.

Locale	Focal School	Comparison Group	
		Percent in each locale	
Large city	Yes		
Midsize city		53%	
Small city		17%	
Suburb of large city		30%	
Suburb of midsize city			
Suburb of small city			
Town on urban fringe			
Distant town			
Remote town			
Rural area on urban fringe			
Distant rural area			
Remote rural area			
Grade Configuration	Focal School	Comparison Group	
		Percent w/each grade	
Includes grade K	Yes	100%	
Includes grade 1	Yes	100%	
Includes grade 2	Yes	100%	
Includes grade 3	Yes	100%	
Includes grade 4	Yes	100%	
Includes grade 5	Yes	100%	
Includes grade 6		3%	
Includes grade 7		3%	
Includes grade 8		3%	
Includes grade 9			
Includes grade 10			
Includes grade 11			
Includes grade 12			
Other	Focal School	Comparison Group	
		Average	St. Dev.
State foundation allowance	\$9,490	\$9,281	\$376
Enrollment	310	410	68
% minority	46%	34%	13%
% economic disadvantage	13%	17%	9%
% students with disabilities	9%	11%	3%
% limited English proficient	8%	6%	6%

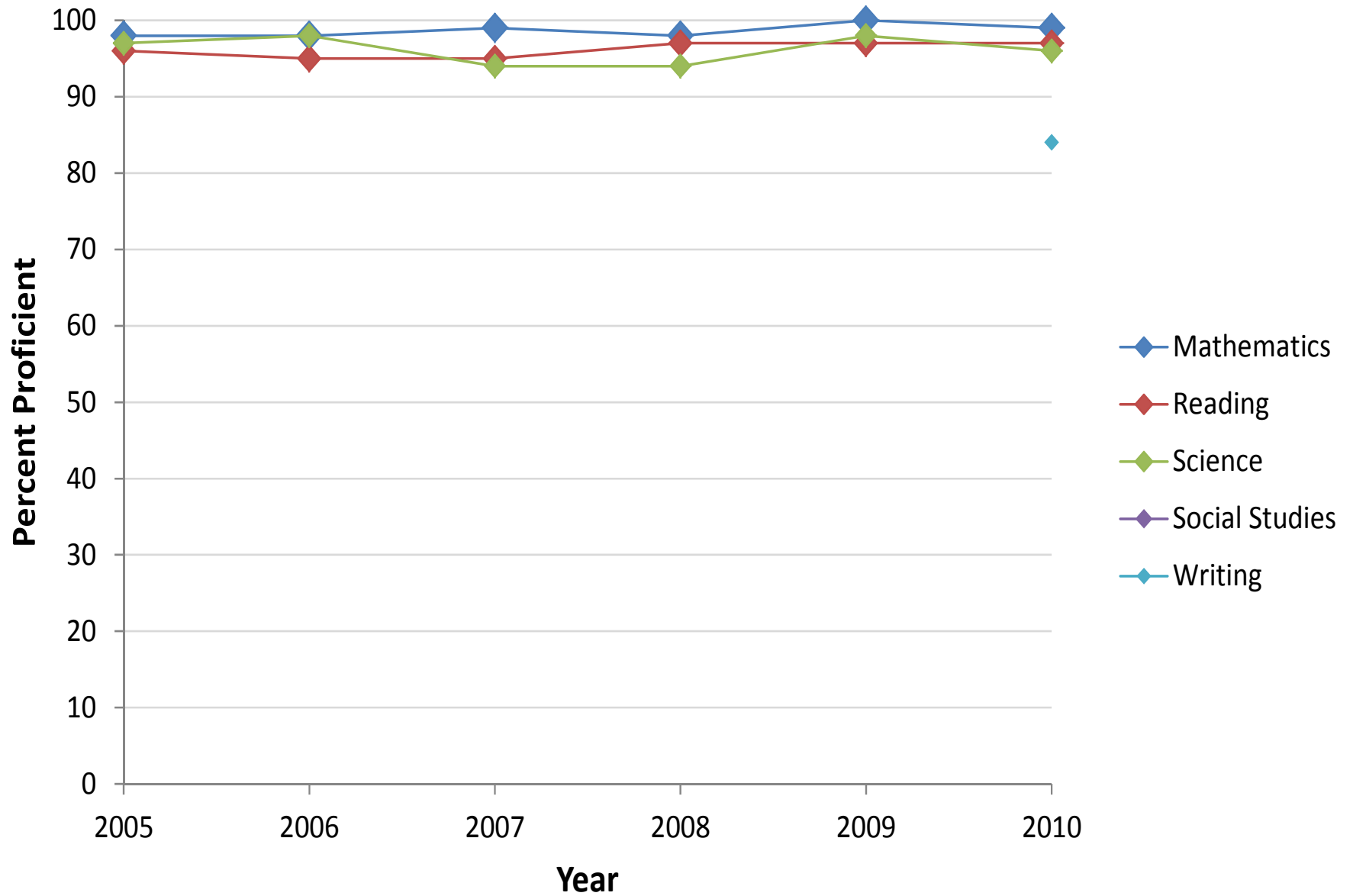
## School Observations

- Caliber and experience of the staff is extremely important, with many staff leaders who are curriculum leaders for the district and who "know their craft."
- Enrichment coordinator for all students, with enrichment activities tied to outcomes.
- Intense focus on individualized learning for all students.
- Stress "horizontal" (kid to kid) and "vertical" (kid to adult) relationships.
- Extensive parental involvement.
- Very hard-working school that takes education very seriously.
- Focus on English Language Learners, including best teaching practices and bilingual translators.
- "Above-proficiency" and customization are the goals at Angell.

Outcomes	Focal School	Comparison Group	
		Average	St. Dev.
Top to bottom ranking	99	88	16
MEAP data 2009 (Full Academic Year, Feeder School)	Focal School	Comparison Group	
		Average	St. Dev.
% proficient in mathematics	100	96	3
% proficient in reading	95	94	2
% proficient in science	98	94	5
% proficient in social studies	--	--	--
MEAP data 2010 (All Students, Tested School)	Focal School	Comparison Group	
		Average	St. Dev.
% proficient in mathematics	99	96	3
% proficient in reading	97	94	3
% proficient in science	96	91	6
% proficient in social studies	--	--	--
% proficient in writing	84	73	11
ACT data 2010 (All Students)	Focal School	Comparison Group	
		Average	St. Dev.
% meeting benchmark in English	--	--	--
% meeting benchmark in mathematics	--	--	--
% meeting benchmark in reading	--	--	--
% meeting benchmark in science	--	--	--
% meeting benchmarks in all subjects	--	--	--
MME data 2010 (Full Academic Year only)	Focal School	Comparison Group	
		Average	St. Dev.
% proficient in mathematics	--	--	--
% proficient in reading	--	--	--
% proficient in science	--	--	--
% proficient in social studies	--	--	--
% proficient in writing	--	--	--
2010 Graduation and Dropout Rates	Focal School	Comparison Group	
		Average	St. Dev.
4-year cohort graduation percent	--	--	--
4-year cohort dropout percent	--	--	--



# Angell School - Ann Arbor Public Schools - Washtenaw ISD



# Saginaw Preparatory Academy

Saginaw

## COMPARISON GROUP

- K-8 schools in suburbs or cities
- Foundation allowance around \$7,661
- Enrollment around 375
- Minority around 89%
- Economic disadvantage around 91%
- Students with disabilities around 17%
- Limited English proficient around 2%

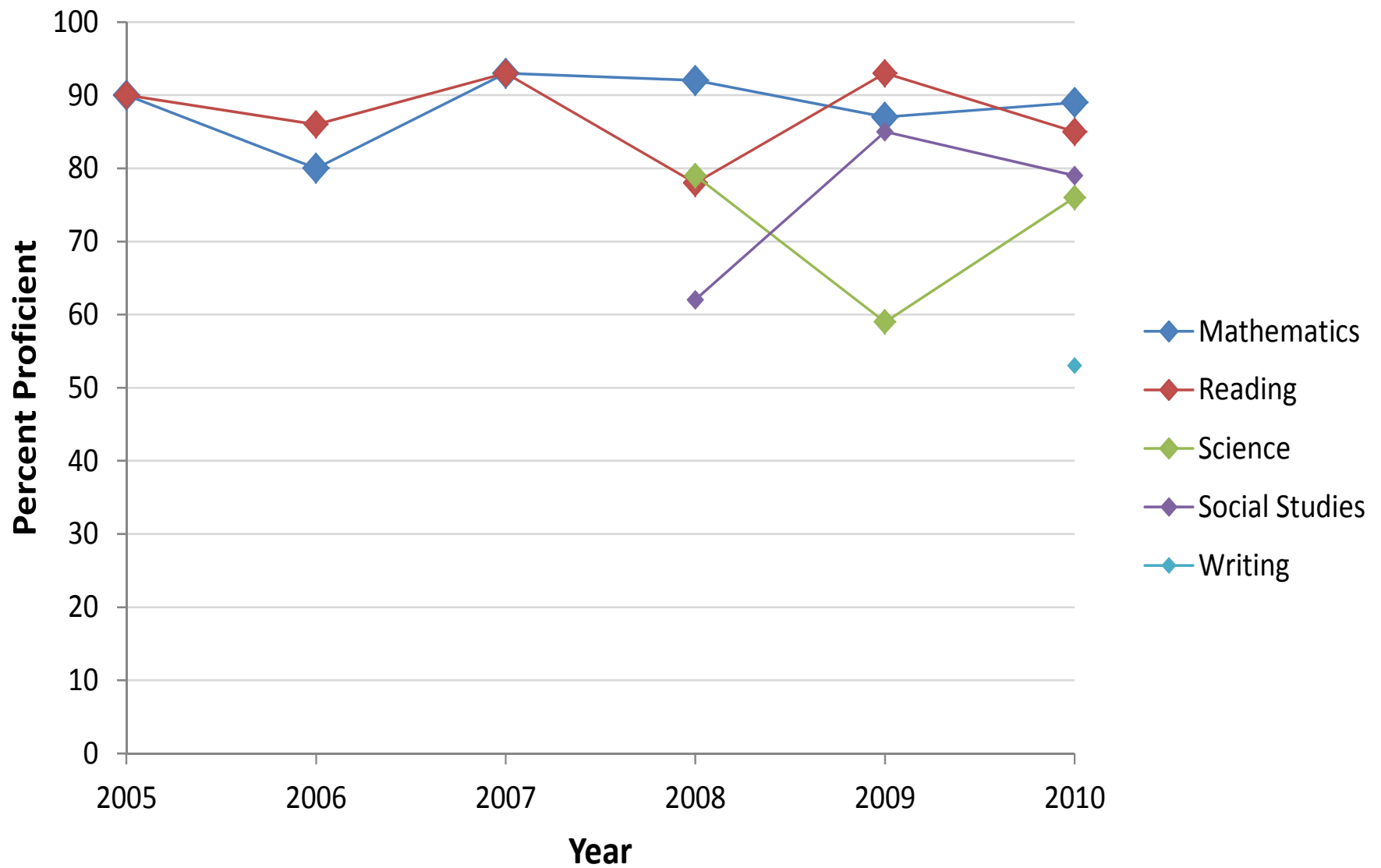
Locale	Focal School	Comparison Group	
		Percent in each locale	
Large city		10%	
Midsize city		7%	
Small city		20%	
Suburb of large city		27%	
Suburb of midsize city	Yes	37%	
Suburb of small city			
Town on urban fringe			
Distant town			
Remote town			
Rural area on urban fringe			
Distant rural area			
Remote rural area			
Grade Configuration	Focal School	Comparison Group	
		Percent w/each grade	
Includes grade K	Yes	87%	
Includes grade 1	Yes	87%	
Includes grade 2	Yes	93%	
Includes grade 3	Yes	93%	
Includes grade 4	Yes	93%	
Includes grade 5	Yes	93%	
Includes grade 6	Yes	77%	
Includes grade 7	Yes	60%	
Includes grade 8	Yes	60%	
Includes grade 9			
Includes grade 10			
Includes grade 11			
Includes grade 12			
Other	Focal School	Comparison Group	
		Average	St. Dev.
State foundation allowance	\$7,580	\$7,661	\$234
Enrollment	320	385	161
% minority	97%	89%	15%
% economic disadvantage	97%	91%	6%
% students with disabilities	21%	17%	5%
% limited English proficient	0%	2%	3%

## School Observations

- High expectations for students and staff.
- Informal, Formative, and Summative assessments are used to drive classroom instruction.
- Data is shared openly with students to encourage goal setting and achievement of goals.
- Data is shared with our parents to help them understand the importance of education.
- Differentiated Instruction is used daily in our classrooms.
- Academically focused summer school program.
- Tutoring is offered and focused on individual students.
- Technology is used daily to prepare our students for success in the 21st century.
- MEAP Quiz Bowl is a friendly competition between peers.

Outcomes	Focal School	Comparison Group	
		Average	St. Dev.
Top to bottom ranking	18	9	9
MEAP data 2009 (Full Academic Year, Feeder School)	Focal School	Comparison Group	
		Average	St. Dev.
% proficient in mathematics	85	64	15
% proficient in reading	89	65	11
% proficient in science	71	47	15
% proficient in social studies	69	40	15
MEAP data 2010 (All Students, Tested School)	Focal School	Comparison Group	
		Average	St. Dev.
% proficient in mathematics	89	68	13
% proficient in reading	85	63	11
% proficient in science	76	46	14
% proficient in social studies	79	46	18
% proficient in writing	53	21	10
ACT data 2010 (All Students)	Focal School	Comparison Group	
		Average	St. Dev.
% meeting benchmark in English	--	--	--
% meeting benchmark in mathematics	--	--	--
% meeting benchmark in reading	--	--	--
% meeting benchmark in science	--	--	--
% meeting benchmarks in all subjects	--	--	--
MME data 2010 (Full Academic Year only)	Focal School	Comparison Group	
		Average	St. Dev.
% proficient in mathematics	--	--	--
% proficient in reading	--	--	--
% proficient in science	--	--	--
% proficient in social studies	--	--	--
% proficient in writing	--	--	--
2010 Graduation and Dropout Rates	Focal School	Comparison Group	
		Average	St. Dev.
4-year cohort graduation percent	--	--	--
4-year cohort dropout percent	--	--	--

# Saginaw Preparatory Academy - Saginaw Preparatory Academy - Saginaw ISD



# Commonalities Among Self-Reported Success Factors

- When the Beating the Odds schools were asked what they felt made them successful, there were some common themes:
  - Individualized and differentiated instruction.
  - Excellent, high-quality, committed staff who are continuously able to hone their craft through strong and targeted professional development.
  - Identifying struggling students early on and providing interventions before the challenges are more severe.
  - Strong parental involvement and community support.
  - District and ISD support.
  - High expectations for all students, a culture of learning, and a belief that excellence is necessary.
  - Preparing students for success in the global economy.

# Description of the Methodology

For Identifying Schools as Beating The Odds

## STUDY #1: SCHOOLS PERFORMING ABOVE PREDICTED PERFORMANCE GIVEN STUDENT DEMOGRAPHICS

- Population
  - Schools that received a top-to-bottom ranking.
- Data
  - Student outcomes on state tests.
    - All subjects.
    - Percent proficient on MEAP, MME, or MI-Access.
    - Leveled playing field across subjects, grades, and test types.
    - Created a single composite measure of school performance.
  - Student demographics.
    - Percent Economically Disadvantaged.
    - Percent Students with Disabilities.
    - Percent Limited English Proficient.



## STUDY #1: SCHOOLS PERFORMING ABOVE PREDICTED PERFORMANCE GIVEN STUDENT DEMOGRAPHICS

- Method
  - Multiple linear regression.
  - Predicted each school's composite outcome based on the student demographic variables.
  - Constructed a 95% confidence interval around the predicted composite outcome.
  - Identified schools that outperformed their predicted composite outcome.
- Results
  - 61 schools identified statewide.

## STUDY #2: SCHOOLS OUTPERFORMING THE 30 MOST DEMOGRAPHICALLY SIMILAR SCHOOLS IN THE STATE

- Population
  - Schools that received a top-to-bottom ranking.
- Outcome data
  - Student outcomes on state tests.
    - All subjects.
    - Percent proficient on MEAP, MME, or MI-Access.
  - High school graduation rate.
  - High school dropout rate.
  - Leveled the playing field across the various outcomes.
  - Created a single composite measure of school performance.

## STUDY #2: SCHOOLS OUTPERFORMING THE 30 MOST DEMOGRAPHICALLY SIMILAR SCHOOLS IN THE STATE

- Demographic data
  - School locale.
    - From National Center for Education Statistics.
  - Grade configuration.
  - State Foundation Allowance.
  - Percent Minority.
  - Percent Economically Disadvantaged.
  - Percent Students with Disabilities.
  - Percent Limited English Proficient.
- Demographics in red weighted more heavily

## STUDY #2: SCHOOLS OUTPERFORMING THE 30 MOST DEMOGRAPHICALLY SIMILAR SCHOOLS IN THE STATE

- Method

- For each school in the population, identify the set of 30 schools that are most demographically similar to the school under consideration.
  - Calculated a demographic “distance” between each school in the population and every other school in the population (used a weighted standardized Euclidean distance measure.)
  - Identified the 30 demographically “closest” schools for each school in the population.
  - Assures that each school is only compared to schools with strongly similar demographic characteristics.
- The 30 closest schools for each school are the comparison group for that school.

## STUDY #2: SCHOOLS OUTPERFORMING THE 30 MOST DEMOGRAPHICALLY SIMILAR SCHOOLS IN THE STATE

- Method, continued...
  - Identify a school as Beating The Odds (in this study) only if the following three conditions are satisfied:
    1. The school's composite outcome is statistically significantly above the average composite outcome of the comparison group (based on a 99% confidence interval.)
    2. The school's composite outcome is higher than the composite outcome for all 30 schools in the comparison group.
    3. The school is not so demographically unique that its comparison group does not make sense.
- Results
  - 72 schools identified.

# SELECTING SCHOOLS TO PROFILE FOR THE STATE BOARD OF EDUCATION

- When identifying schools that appeared as Beating The Odds in both studies...
  - The original results were limited to elementary schools.
  - We were able to identify one high school by relaxing the confidence level of study #1 to 90%.
  - We were able to identify one middle school by further relaxing the confidence level of study #1 to 80%.

# CONTACT INFORMATION

- Joseph A. Martineau, Ph.D.
  - Executive Director
  - Bureau of Assessment & Accountability
  - Michigan Department of Education
  - [martineauj@michigan.gov](mailto:martineauj@michigan.gov)
- Venessa Keesler, Ph.D.
  - Manager of Evaluation Research & Accountability
  - Bureau of Assessment & Accountability
  - Michigan Department of Education
  - [keeslerv@michigan.gov](mailto:keeslerv@michigan.gov)