



Michigan Flu Focus

Weekly Influenza Surveillance Report



Editor: Seth Eckel, MPH
Co-Editor: Macey Ladisky

Editor Email: EckelS1@michigan.gov

January 12, 2018

Vol. 15; No. 13

Week Ending January 6, 2018 | WEEK 1

Michigan Influenza Activity
No Activity
Sporadic
Local
Regional
<u>Widespread</u>

*Clicking on the current activity level will direct you to the CDC webpage defining each activity level for the geographic spread of influenza

Influenza-associated Pediatric Mortality

No pediatric influenza deaths have been reported to date to MDHHS during the 2017-2018 flu season. Nationally, twenty (20) influenza-associated pediatric deaths have been reported thus far for the 2017-2018 flu season.

Updates

It is not too late to receive a flu shot! A study shows that repeated influenza vaccination helps prevent severe flu especially in older adults. See FluBytes link to learn more.

FluBytes

- [Current Flu Vaccine for Northern Hemisphere Includes 'Michigan' Strain](#)
- [Repeated Influenza Vaccination Helps Prevent Severe Flu in Older Adults, Study Finds](#)
- [Flu Counts Jump as 46 States Report Widespread Activity](#)

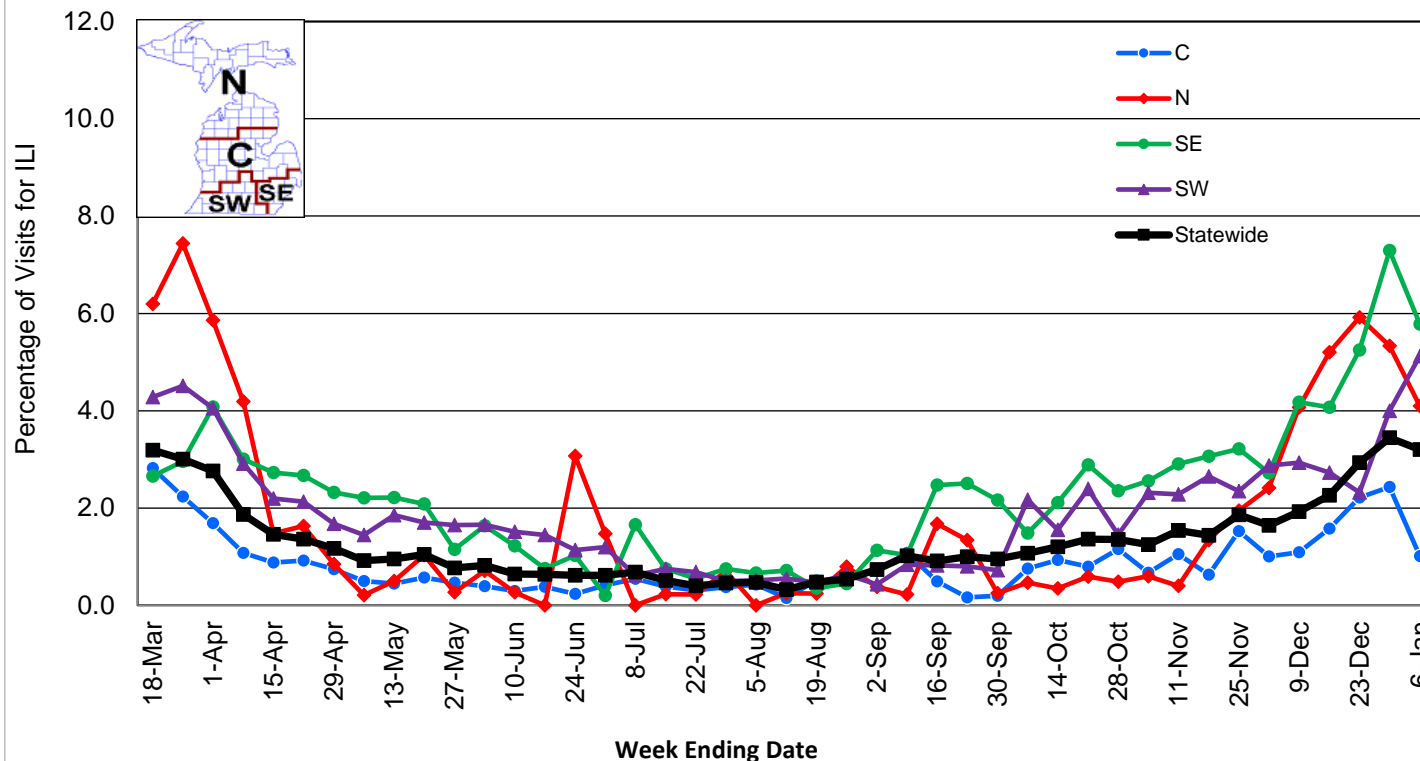
Sentinel Provider Surveillance

- Number of reports by region: 24 total [C(6), N(2), SE(10), SW(6)]
- Proportion of visits due to ILI: ↓ 3.2 % (regional baseline*: 1.8%)
- A total of 322 patient visits due to ILI were reported out of 10,058 office visits

*Regional baseline is developed by calculating the mean percentage of patient visits for ILI during non-influenza weeks for the previous three seasons and adding two standard deviations.

Become a Sentinel Provider! Contact:
EckelS1@michigan.gov

**Percentage of Visits for Influenza-like Illness (ILI)
Reported by Sentinel Providers, Statewide and Regions
2016-17 and 2017-18 Flu Seasons**



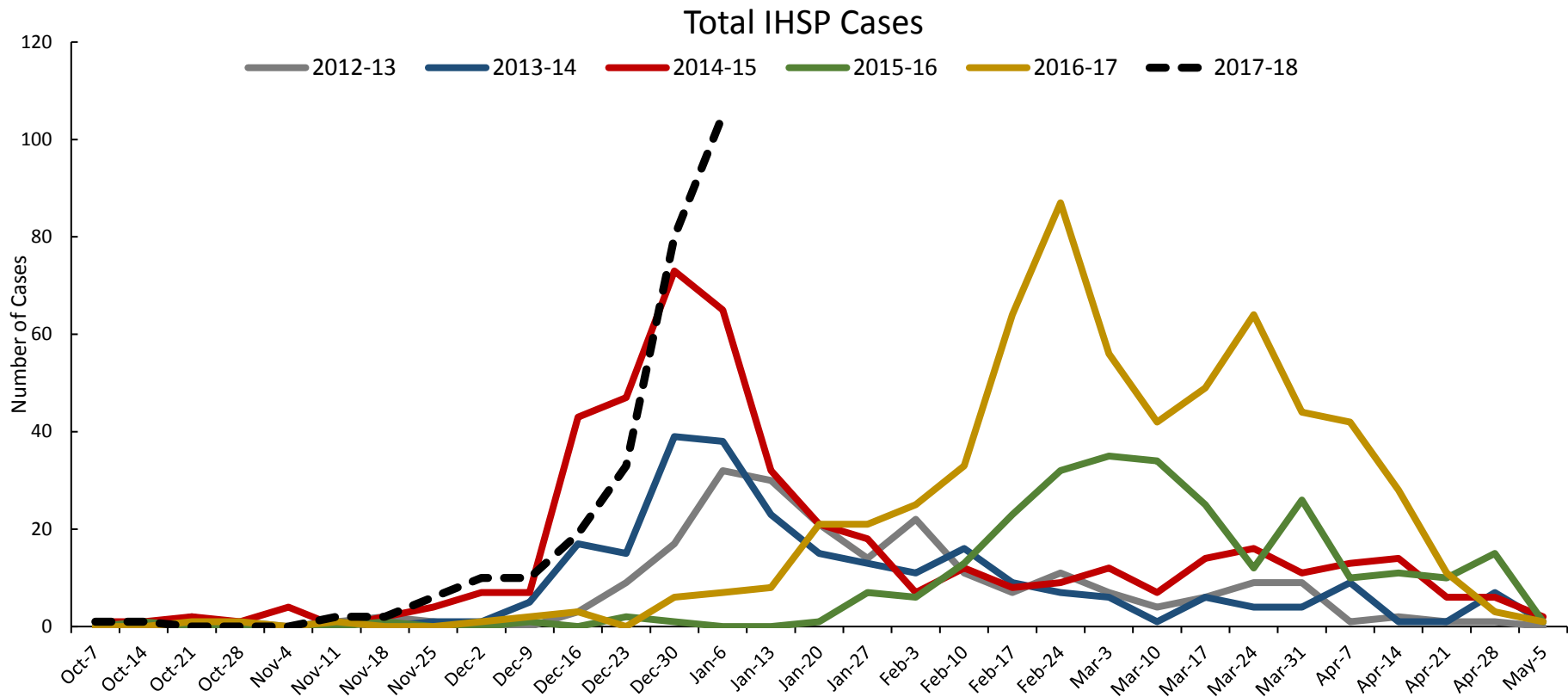
National Surveillance

In the United States, 5.8% of outpatient visits were due to influenza-like illness, which is above the national baseline of 2.2%.

Influenza-related Hospitalization Surveillance

Influenza Hospitalization Surveillance Project

The CDC Influenza Hospitalization Surveillance Project (IHSP) provides population-based rates of hospitalization due to severe influenza-related illness through active surveillance and chart review of lab-confirmed cases from Oct. 1, 2017 until Apr. 30, 2018, for Clinton, Eaton, Ingham, Genesee, and Washtenaw counties. Since Oct. 1, there have been a total of **269 (14 pediatric, 255 adult)** influenza-related hospitalizations reported in the catchment area for the 2017-2018.



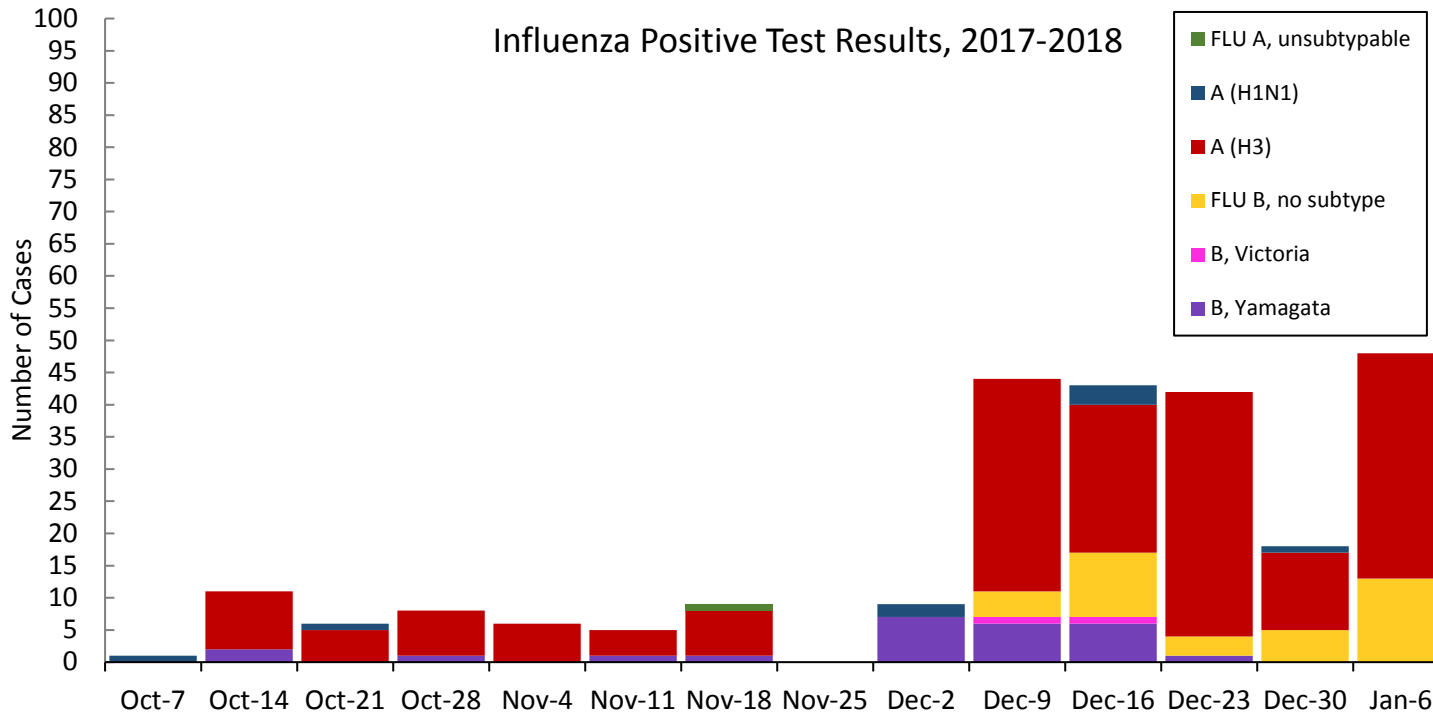
Genesee County was added in 2012-2013

Washtenaw County was added in 2017-2018

Laboratory Surveillance

MDHHS Bureau of Laboratories reported 31 new positive influenza results (18 A/H3, 0 A/H1 & 13 flu B) during this time period. A total of 253 positive influenza results have been reported for the 2017-18 season.

Respiratory Virus	# Positive Respiratory Virus Results by Region				Total
	C	N	SE	SW	
2009 A/H1N1pdm	0	0	7	1	8
Influenza A/H3	59	21	73	44	197
Influenza B	5	5	30	8	48



*Based on MDHHS Laboratory Data

Note: Flu B subtyping will be reported based on MDHHS BOL testing runs (roughly each month) and will be backtracked into this graph.

The most recent MDHHS BOL Flu B subtyping run: **December 16, 2017.**

Sentinel Clinical Lab Activity

Ten (10) sentinel clinical labs (2SE, 2SW, 6C, 0N) reported the following influenza testing results for the current week:

SE Region

- Influenza A: sharply elevated/increasing
- Influenza B: slightly increasing
- Parainfluenza: slightly increased
- RSV: elevated
- Adenovirus: low
- hMPV: slightly increased

Central Region

- Influenza A: moderately/sharply increasing
- Influenza B: low
- Parainfluenza: low
- RSV: elevated/slightly increasing
- Adenovirus: sporadic
- hMPV: low

SW Region

- Influenza A: sharply increasing
- Influenza B: slightly increased
- Parainfluenza: low
- RSV: elevated/increasing
- Adenovirus: low
- hMPV: low

North Region

- No data available

Congregate Setting Outbreaks of Viral Respiratory Illness

There were 27 (1N, 18C, 3SE, 5SW) new respiratory outbreaks reported to MDHHS during this time Period. Respiratory outbreaks for the 2017-2018 season are listed in the table below.

Facility Type	C	N	SE	SW	Total	2015-2016 Total	2016-2017 Total
Schools: K-12 & College	2				2	10	25
Long-term Care / Assisted Living Facility	37	9	10	14	70	60	138
Healthcare Facility	1				1	11	23
Daycare	1			1	2	2	3
Homeless Shelter						0	1
Correction Facilities						2	2
Other (Church, Gym, Unknown)						2	3
Total	41	9	10	15	75	87	195

Did you know?

Congregate setting outbreaks of viral respiratory illnesses are required to be reported to your local health department? See http://www.michigan.gov/documents/mdch/Influenza_Guidance_for_Healthcare_Providers_2015-2016_503396_7.pdf

For questions or to be added to the distribution list, please contact Seth Eckel at EckelS1@michigan.gov

MDHHS Contributors

Bureau of Family Health Services

Bureau of Epidemiology and Population Health – S. Bidol, MPH, S. Eckel, MPH, S. Kim, MPH, M. Ladisky

Bureau of Labs – B. Robeson, MT, V. Vavricka, MS