



Michigan Flu Focus

Weekly Influenza Surveillance Report



Editor: Seth Eckel, MPH
Co-Editor: Macey Ladisky

Editor Email: EckelS1@michigan.gov

February 9, 2018

Vol. 15; No. 17

Week Ending February 3, 2018 | WEEK 5

Michigan Influenza Activity
No Activity
Sporadic
Local
Regional
<u>Widespread</u>

*Clicking on the current activity level will direct you to the CDC webpage defining each activity level for the geographic spread of influenza

Updates of Interest

The Michigan Department of Health and Human Services (MDHHS) recently confirmed Michigan's first influenza-associated pediatric death of the 2017-2018 flu season. Influenza claims the lives of children every year across the United States, which is why MDHHS is reminding residents that it's not too late to get vaccinated for protection this season.

Click [here](#) to view the full press release.

Weekly Influenza Activity Estimates Reported by State & Territorial Epidemiologists*

Week ending February 3, 2018 - Week 5



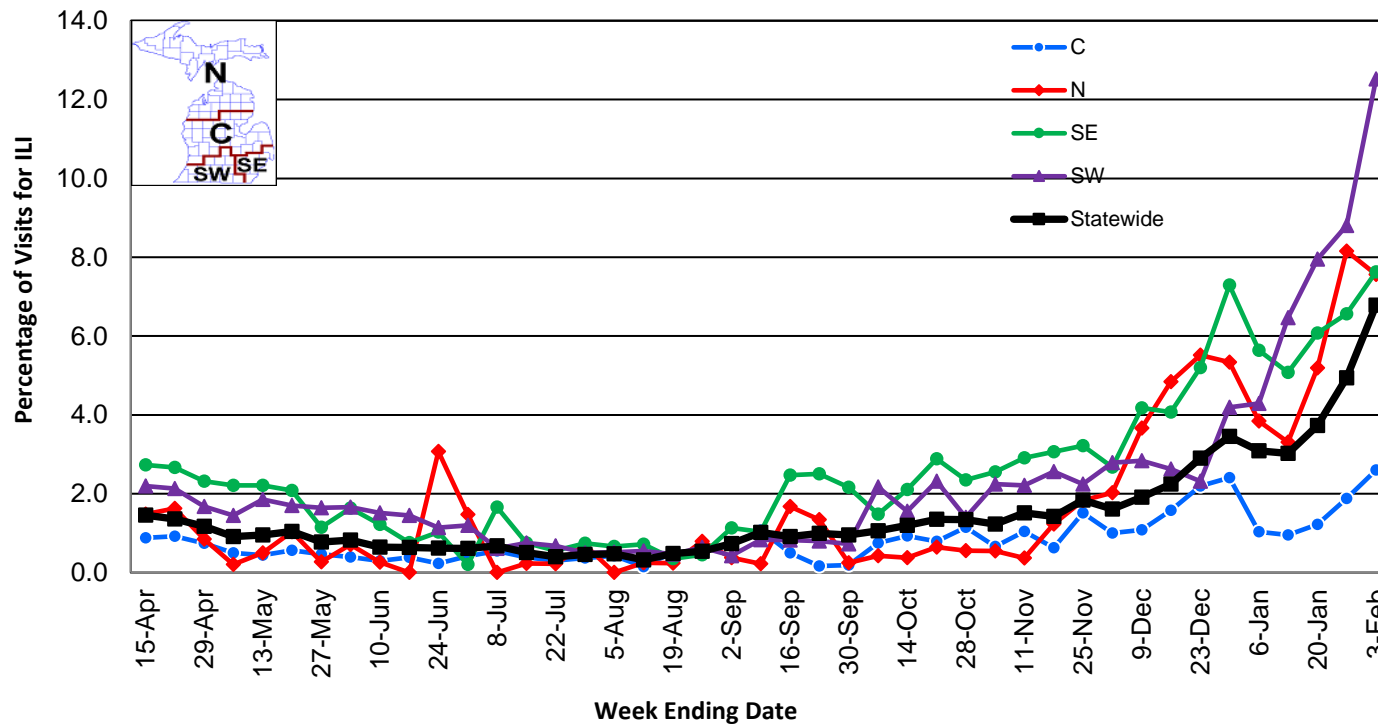
Influenza-associated Pediatric Mortality

One pediatric influenza death (A/H3) has been confirmed by MDHHS to date for the 2017-2018 flu season. Nationally, sixty-three (63) influenza-associated pediatric deaths have been reported thus far for the 2017-2018 flu season.

- Number of reports by region: 38 total [C(10), N(4), SE(15), SW(9)]
- Proportion of visits due to ILI: ↑ 6.8 % (regional baseline*: 1.8%)
- A total of 900 patient visits due to ILI were reported out of 13,268 office visits

*Regional baseline is developed by calculating the mean percentage of patient visits for ILI during non-influenza weeks for the previous three seasons and adding two standard deviations.

Percentage of Visits for Influenza-like Illness (ILI)
Reported by Sentinel Providers, Statewide and Regions
2016-17 and 2017-18 Flu Seasons



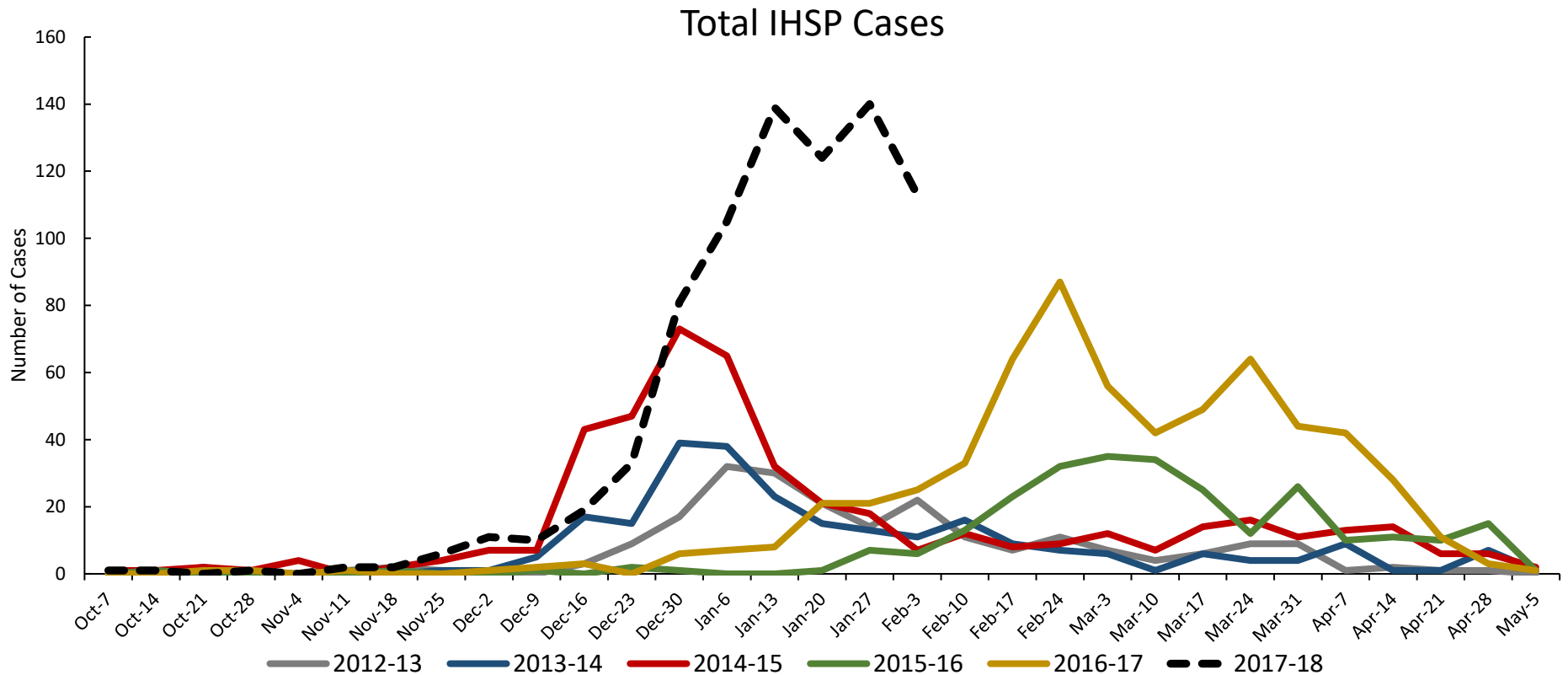
Become a Sentinel Provider! Contact:
EckelS1@michigan.gov

National Surveillance

In the United States, 7.7% of outpatient visits were due to influenza-like illness, which is above the national baseline of 2.2%.

Influenza Hospitalization Surveillance Project

The CDC Influenza Hospitalization Surveillance Project (IHSP) provides population-based rates of hospitalization due to severe influenza-related illness through active surveillance and chart review of lab-confirmed cases from Oct. 1, 2017 until Apr. 30, 2018, for Clinton, Eaton, Ingham, Genesee, and Washtenaw counties. Since Oct. 1, there have been a total of **788 (54 pediatric, 734 adult)** influenza-related hospitalizations reported in the catchment area for the 2017-2018.

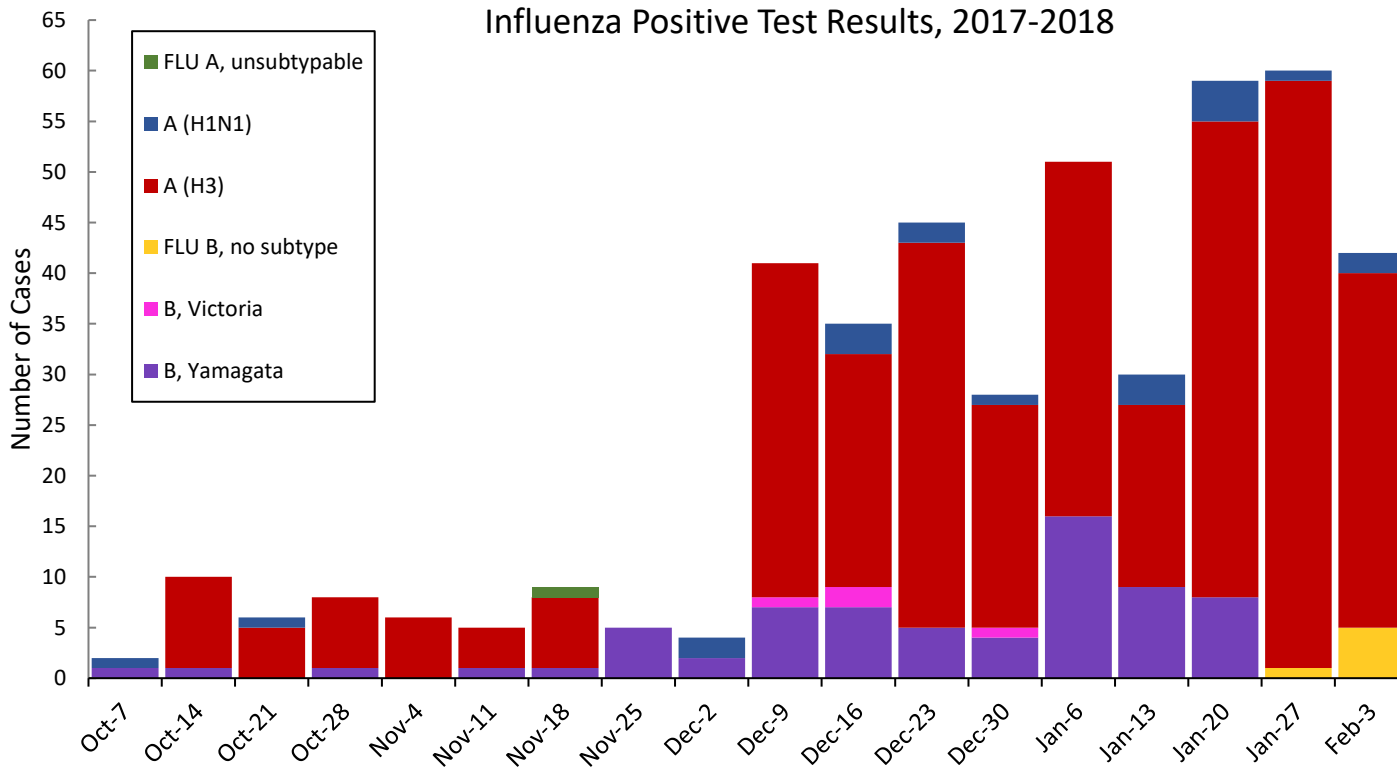


Genesee County was added in 2012-2013

Washtenaw County was added in 2017-2018

MDHHS Bureau of Laboratories reported 42 new positive influenza (27C, 6N, 1SE, 8SW).

Respiratory Virus	# Positive Respiratory Virus Results by Region				Overall Total
	C	N	SE	SW	
2009 A/H1N1pdm	2	1	10	7	20
Influenza A/H3	142	36	89	118	385
Influenza B	12	9	40	16	77
Total	156	46	139	141	482



*Based on STARLIMS MDHHS BOL Testing Portal

Note: Flu B subtyping will be reported based on MDHHS BOL testing runs (roughly each month) and will be backtracked into this graph

Most recent MDHHS BOL Flu B subtyping run: **January 26th, 2018.**

Michigan Sentinel Clinical Lab Respiratory Virus Data

Eleven (11) sentinel clinical labs (3SE, 2SW, 6C, 0N) reported during this week.

SE Region

- Influenza A: very sharply elevated; continued increases
- Influenza B: elevated; some increases
- Parainfluenza: low to slightly elevated
- RSV: elevated; steady
- Adenovirus: slightly elevated
- hMPV: elevated; slightly increasing

Central Region

- Influenza A: moderate to highly elevated; steady
- Influenza B: low to slightly elevated; steady
- Parainfluenza: sporadic
- RSV: elevated; steady
- Adenovirus: low
- hMPV: low

SW Region

- Influenza A: highly elevated; some decreases
- Influenza B: elevated; steady
- Parainfluenza: sporadic
- RSV: elevated; slightly decreasing
- Adenovirus: slightly elevated
- hMPV: slightly elevated; increasing

North Region

- No data available

There were 28 (1N, 11C, 7SE, 9SW) new respiratory viral outbreaks reported to MDHHS during this time Period. Respiratory outbreaks for the 2017-2018 season are listed in the table below.

Facility Type	C	N	SE	SW	Total	2015-2016 Total	2016-2017 Total
Schools: K-12 & College	8		2	3	13	10	25
Long-term Care / Assisted Living Facility	75	9	38	46	168	60	138
Healthcare Facility	2				2	11	23
Daycare	2			1	3	2	3
Homeless Shelter						0	1
Correctional Facility	1	3	1	2	7	2	2
Other						2	3
Total	88	12	41	52	193	87	195

Did you know?

Congregate setting outbreaks of viral respiratory illnesses are required to be reported to your local health department? See:

- [Influenza Guidance for Healthcare Providers](#)
- [Guideline for influenza and Respiratory Virus Outbreaks in Long-Term Care Facilities](#)

FluBytes

- [Flu Costing Billions of Dollars for Businesses](#)
- [16 More Pediatric Deaths from Flu; Flu Season Peak Still Forthcoming](#)
- [High-Path Avian Flu Outbreaks Reported in Mideast, Asia, and Europe](#)

MDHHS Contributors

Bureau of Family Health Services -

Bureau of Epidemiology and Population Health –
S. Bidol, MPH, S. Eckel, MPH, S. Kim, MPH, M. Ladisky

Bureau of Labs – B. Robeson, MT, V. Vavricka, MS

For questions or to be added to the distribution list, please contact Seth Eckel at EckelS1@michigan.gov