



# MI Flu Focus

## Influenza Surveillance Updates

### Bureaus of Epidemiology and Laboratories



Editor: Jalyn Ingalls, MA

[IngallsJ@michigan.gov](mailto:IngallsJ@michigan.gov)

February 13, 2017

Vol. 14; No. 18

### Influenza Surveillance Report for the Week Ending February 4, 2017

**MI's Influenza Activity Level:**  
Widespread

**Updates of Interest:** The CDC is hosting a Clinician Outreach and Community Activity (COCA) Call titled "2016-2017 Influenza Season Activity and Recommendations for Clinicians." See FluBytes on page 4 for more details.

#### Sentinel Provider Surveillance

The proportion of visits due to influenza-like illness (ILI) increased to 3.5% overall, which is above the regional baseline of 1.9%. A total of 346 patient visits due to ILI were reported out of 9,786 office visits. Please note: These rates may change as additional reports are received.

#### Number of Reports by Region (34 total):

- C (11)
- N (2)
- SE (15)
- SW (6)

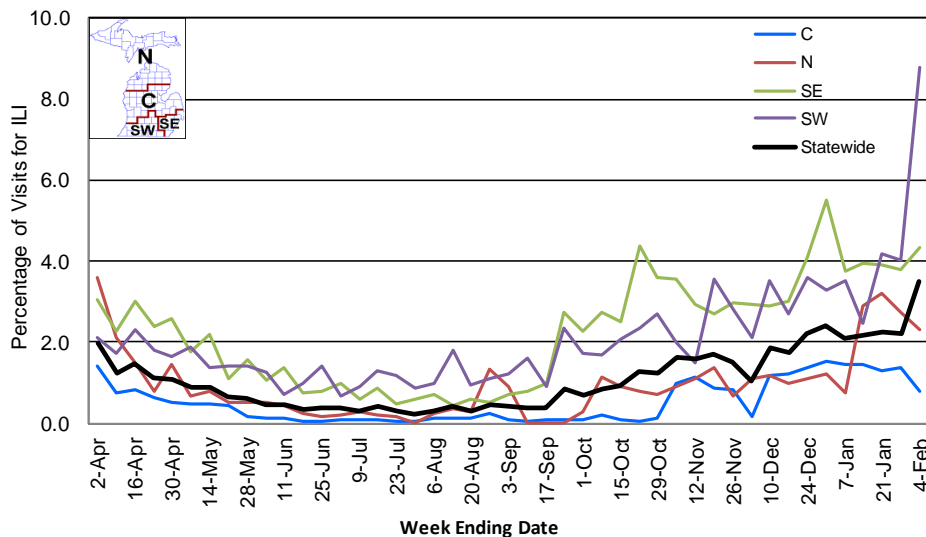
**National Surveillance:** In the United States, 4.8% of outpatient visits were due to influenza-like illness, which is above the national baseline of 2.2%.

#### Become a Sentinel Provider!

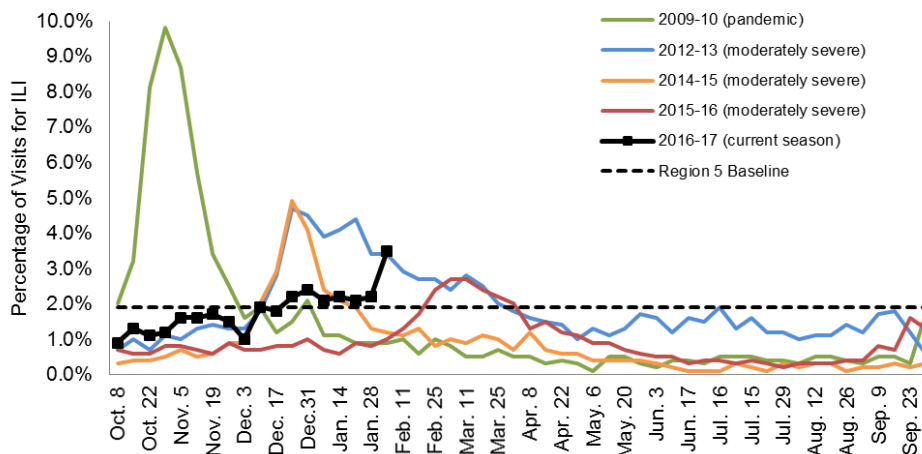
As part of pandemic influenza surveillance, CDC and MDHHS highly encourage year-round participation from all sentinel providers. New practices are encouraged to join the sentinel surveillance program today! Contact Jalyn Ingalls ([IngallsJ@michigan.gov](mailto:IngallsJ@michigan.gov)) for more information.

Additional information is in the weekly FluView reports available at: [www.cdc.gov/flu/weekly](http://www.cdc.gov/flu/weekly).

Percentage of Visits for Influenza-like Illness (ILI) Reported by Sentinel Providers, Statewide and Regions 2015-16 - 2016-17 Flu Seasons



Percentage of Visits for Influenza-like Illness (ILI) Reported by the US Outpatient Influenza-like Illness Surveillance Network (ILINet): Michigan, Select Seasons



## Hospital Surveillance

The CDC Influenza Hospitalization Surveillance Project provides population-based rates of hospitalization due to severe influenza illness through active surveillance and chart review of lab-confirmed cases from Oct. 1, 2016 until Apr. 30, 2017, for Clinton, Eaton, Genesee, and Ingham counties. Since Oct. 1, there have been **11 pediatric and 86 adult** influenza-related hospitalizations reported in the catchment area for the 2016-2017 season. Note: Cumulative totals may change from week to week as cases are reviewed to determine if they meet the case definition.

The MDHHS Influenza Sentinel Hospital Network monitors influenza-related admissions reported voluntarily by hospitals statewide, with 13 facilities (C, N, SE, SW) reporting during this time period. Results for the 2016-17 flu season are listed in the table below. Additional hospitals are encouraged to join; please contact Seth Eckel at [eckels1@michigan.gov](mailto:eckels1@michigan.gov).

Age Group	New Flu Hospitalizations Reported	Total 2016-17 Flu Hospitalizations Reported to Date
0-4 years	0	6 (1N, 2SE, 3SW)
5-17 years	2 (1N, 1SE)	10 (2N, 1C, 4SE, 3SW)
18-49 years	8 (1N, 7SE)	28 (2N, 20SE, 6SW)
50-64 years	6 (5SE, 1SW)	32 (6N, 23SE, 3SW)
65 years & older	38 (5N, 2C, 26SE, 5SW)	132 (25N, 2C, 89SE, 16SW)
<b>Total</b>	<b>54 (7N, 2C, 39SE, 6SW)</b>	<b>208 (36N, 3C, 138SE, 31SW)</b>

## Influenza-associated Pediatric Mortality

No new influenza-associated pediatric deaths were reported to MDHHS. In Michigan, there have been no influenza-associated pediatric deaths reported for the 2016-17 season. Nationally, 20 influenza-associated pediatric deaths have been reported thus far for the 2016-17 flu season.

## Laboratory Surveillance

MDHHS Bureau of Laboratories reported 18 new positive influenza results (17 A/H3 and 1 flu B) during this time period. A total of 232 positive influenza results have been reported for the 2016-17 season. Influenza results for the 2016-17 season are in the table below.

Respiratory Virus	# Positive Respiratory Virus Results by Region				Total	# Specimens Antigenically Characterized	# Tested for Antiviral Resistance
	C	N	SE	SW			# Resistant / Total # Tested
2009 A/H1N1pdm	1		1		2		
Influenza A/H3	49	8	85	48	190	4 (A/HONG KONG/4801/2014-LIKE)	0 / 8
Influenza B	3		23	14	40	3 (B/PHUKET/3073/2013-LIKE) 5 (B/BRISBANE/60/2008-LIKE)	
A / unsubtypeable							
LAIV recovery							

In addition, 11 sentinel clinical labs (2SE, 2SW, 6C, 1N) reported influenza testing results. Ten labs (SE, SW, C) reported influenza A activity ranging from sporadic to further increasing, with notable upticks occurring in the SE, SW, and C regions. Eight labs (SE, SW, C) reported influenza B activity ranging from sporadic to notably increasing, with several sites (SW, C) showing proportional or predominant B activity. One site (N) reported no influenza activity. Three labs (C, SE, SW) reported low or slightly increased Parainfluenza activity. Nine labs (SE, SW, C) reported RSV activity with most sites showing a steady or upward trend. Five labs (SE, SW, C, N) reported sporadic or low Adenovirus activity. Five labs (SE, SW, C) reported low or somewhat elevated hMPV activity. Overall testing volumes are showing further increases, with most sites in the moderate-high range.

### Congregate Setting Outbreaks of Viral Respiratory Illness

There were 5 new respiratory facility outbreaks (2C, 1SE, 2SW) reported to MDHHS during this time period, both of which were confirmed influenza A. Respiratory facility outbreaks for the 2016-2017 season are listed in the table below.

Facility Type	C	N	SE	SW	Total
K-12 School					
Long-term Care / Assisted Living Facility	2		4	11	17
Healthcare Facility					
Daycare				1	1
Homeless Shelter			1		1
<b>Total</b>	<b>2</b>		<b>5</b>	<b>12</b>	<b>19</b>

### Michigan Disease Surveillance System

MDSS influenza data indicated that compared to levels from the previous week, aggregate reports had decreased, while individual reports had increased. Aggregate and individual reports were both higher than levels seen during the same time period last year.

### Emergency Department Surveillance

Compared to levels from the week prior, emergency department visits from constitutional complaints had increased, while respiratory complaints were similar. Levels of constitutional and respiratory complaints were both higher than those recorded during the same time period last year.

- 12 constitutional alerts (3N, 6C, 3SW)
- 3 respiratory alerts (2N, 1C)
- Last MIFF report: 18 constitutional alerts (4N, 7C, 1SE, 4SW, 2 statewide), 8 respiratory alerts (3N, 3C, 1SE, 1SW)

### Weekly Influenza Activity Estimates Reported by State & Territorial Epidemiologists\*

Week ending February 4, 2017 - Week 5





## 2016-2017 INFLUENZA SEASON ACTIVITY AND RECOMMENDATIONS FOR CLINICIANS CALL

The Centers for Disease Control and Prevention (CDC) is hosting a Clinician Outreach and Community Activity (COCA) Call titled “2016-2017 Influenza Season Activity and Recommendations for Clinicians”. During this call, clinicians will learn about 2016-2017 influenza activity to date, and hear an overview of CDC’s recommendations for healthcare providers including influenza vaccination and the use of antiviral medications for the treatment of influenza. The call is scheduled for Thursday, February 16 from 2:00-3:00pm ET. To access the call in information and webinar link, click [here](#).

## 2017 IMMUNIZATION SCHEDULES AVAILABLE

The 2017 recommended immunization schedules have been released. The schedules are revised and approved annually by the Advisory Committee on Immunization Practices (ACIP) and the Centers for Disease Control and Prevention (CDC). The [childhood and adolescent birth through 18 years immunization schedule](#) and [the adult immunization schedule](#) are available online. Please read through the MMWRs for the [Recommended Immunization Schedule for Children and Adolescents Aged 18 Years or Younger](#) and the [Recommended Immunization Schedule for Adults Aged 19 Years or Older](#). Remember to always review the footnotes. For more information, please see [Immunization Schedules](#) webpage on CDC’s website.

## LAST CHANCE TO NOMINATE SOMEONE FOR THE CDC 2017 CHILDHOOD IMMUNIZATION CHAMPION AWARD

The Centers for Disease Control and Prevention (CDC) Childhood Immunization Champion Award is an annual award to recognize individuals who make a significant contribution toward improving public health through their work in childhood immunizations. This award is given jointly by the CDC Foundation and the CDC. Champions can include coalition members, parents, healthcare professionals, and other immunization leaders. All [nominations](#) need to be submitted to MDHHS Division of Immunizations, Attention: Stephanie Sanchez ([SanchezS@michigan.gov](mailto:SanchezS@michigan.gov)) no later than **February 17, 2017**.

## INFLUENZA-RELATED JOURNAL ARTICLES

- [Interim estimates of 2016/17 vaccine effectiveness against influenza A\(H3N2\), Canada, January 2017](#)
- [Human mobility and the spatial transmission of influenza in the United States](#)
- [Developing a system to estimate the severity of influenza infection in England: Findings from a hospital-based surveillance system between 2010/2011 and 2014/2015](#)
- [Inhibition of influenza A virus infection by ginsenosides](#)
- [The need to optimize adolescent immunization](#)
- [Practical approaches to optimize adolescent immunization](#)

## OTHER INFLUENZA-RELATED NEWS

- [State health dept.: Get your flu shot](#)
- [4 children die of flu in New York, health officials say](#)
- [Medical professionals seeing ‘concerning’ spike in local flu cases](#)
- [Flu death rates just hit the epidemic threshold, but this is the real shocker](#)
- [Studies shed light on effects of serial flu shots, current vaccine’s benefits](#)
- [Health division says upward trend in flu cases reported, doubled from this time last flu season](#)

## AVIAN INFLUENZA INTERNATIONAL NEWS

- [Scottish bird flu restrictions to remain in place](#)
- [Bird flu deaths bring live poultry market ban in Hunan province](#)
- [Taiwan reports human H7N9 avian influenza case, dozens of additional cases reported in China](#)
- [H7N9 avian influenza: WHO analysis](#)
- [Avian influenza – update on biosecurity measures](#)
- [Myanmar confirms its first H5N6 outbreak](#)

## FLU WEBSITES

[www.michigan.gov/flu](http://www.michigan.gov/flu)  
[www.cdc.gov/flu](http://www.cdc.gov/flu)  
[www.flu.gov](http://www.flu.gov)  
<http://vaccine.healthmap.org/>

Archived editions of FluBytes are available [here](#) and MI FluFocus archives are [here](#).

For questions or to be added to the distribution list, please contact Jalyn Ingalls at [ingallsj@michigan.gov](mailto:ingallsj@michigan.gov).

### MDHHS Contributors

Bureau of Epidemiology – S. Bidol, MPH, J. Ingalls, MA, S. Eckel, MPH  
Bureau of Labs – B. Robeson, MT, V. Vavricka, MS