



MI Flu Focus

Influenza Surveillance Updates

Bureaus of Epidemiology and Laboratories



Editor: Stefanie Cole, RN, MPH ColeS4@michigan.gov December 23, 2015 Vol. 12; No. 41

Influenza Surveillance Report for the Week Ending December 12, 2015

MI's Influenza Activity Level:
Sporadic

Updates of Interest:

- An article was published in MMWR detailing [vaccine administration errors at an employee flu vaccination clinic](#) in New Jersey earlier this flu season.

Michigan Disease Surveillance System

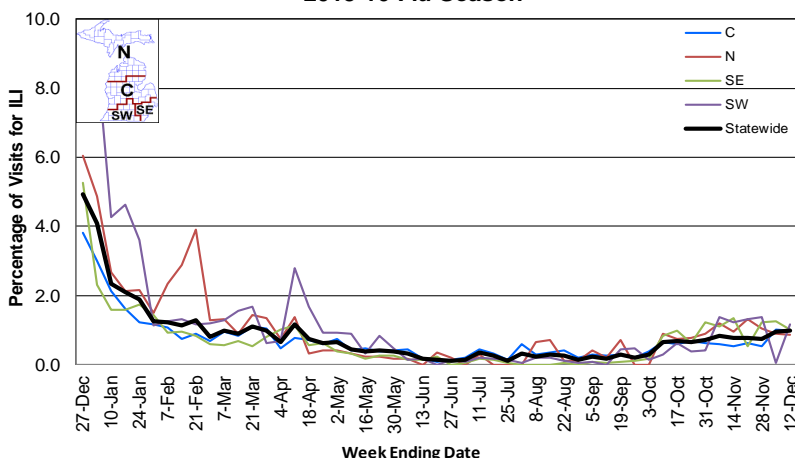
MDSS influenza data indicated that compared to levels from the previous week, aggregate reports decreased while individual reports increased. Both aggregate and individual reports were lower than levels seen during the same time period last year.

Emergency Department Surveillance

Compared to levels from the week prior, emergency department visits from constitutional and respiratory complaints were similar. Levels of both constitutional and respiratory complaints were lower than those recorded during the same time period last year.

- 6 constitutional alerts (1SE, 1SW, 3C, 1N)
- 8 respiratory alerts (2SW, 5C, 1N)
- Last MIFF report: 6 constitutional alerts (2SE, 1SW, 2C, 1N), 7 respiratory alerts (1SE, 2SW, 4C)

Percentage of Visits for Influenza-like Illness (ILI) Reported by Sentinel Providers, Statewide and Regions 2015-16 Flu Season



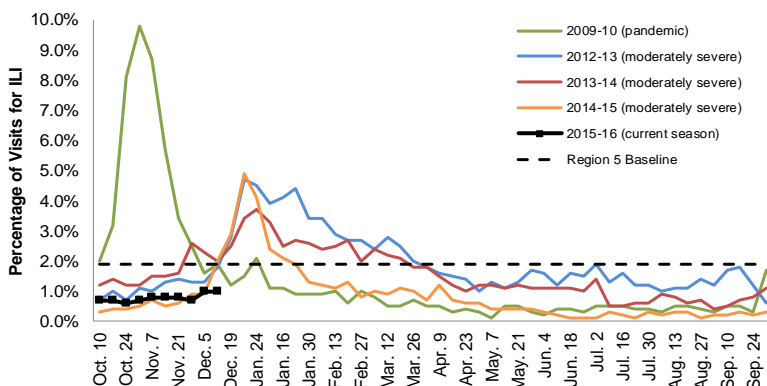
Sentinel Provider Surveillance

The proportion of visits due to influenza-like illness (ILI) remained the same at 1.0% overall; this is below the regional baseline (1.9%). A total of 140 patient visits due to ILI were reported out of 14,064 office visits. Please note: These rates may change as additional reports are received.

Number of Reports by Region (34 total):

- C (16)
- N (3)
- SE (12)
- SW (3)

Percentage of Visits for Influenza-like Illness (ILI) Reported by the US Outpatient Influenza-like Illness Surveillance Network (ILINet): Michigan, Select Seasons



Become a Sentinel Provider!

As part of pandemic influenza surveillance, CDC and MDHHS highly encourage year-round participation from all sentinel providers. New practices are encouraged to join the sentinel surveillance program today! Contact Stefanie Cole (ColeS4@michigan.gov) for more information.

Table of Contents:

Michigan Surveillance.....1-2
National Surveillance.....3
International Surveillance....3
FluBytes3

Hospital Surveillance

The CDC Influenza Hospitalization Surveillance Project provides population-based rates of hospitalization due to severe influenza illness through active surveillance and chart review of lab-confirmed cases beginning on Oct. 1, 2015, for Clinton, Eaton, Genesee, and Ingham counties. Since Oct. 1, there have been 2 pediatric hospitalizations and 1 adult hospitalization reported within the catchment area.

The MDHHS Influenza Sentinel Hospital Network monitors influenza hospitalizations reported voluntarily by hospitals statewide, and 12 hospitals (N, C, SE & SW) reported. Results for the 2015-16 flu season are listed in the table below. Additional hospitals are welcome to join; please contact Seth Eckel at eckels1@michigan.gov.

| Age Group | New Flu Hospitalizations Reported | Total 2015-16 Flu Hospitalizations Reported to Date |
|------------------|-----------------------------------|---|
| 0-4 years | 0 | 0 |
| 5-17 years | 0 | 0 |
| 18-49 years | 0 | 2 (SE) |
| 50-64 years | 0 | 1 (SE) |
| 65 years & older | 0 | 1 (SE) |
| Total | 0 | 4 (SE) |

Laboratory Surveillance

MDHHS Bureau of Laboratories reported 7 new positive influenza results: 4 2009 A/H1N1pdm, 2 A/H3, and 1 influenza B. A total of 26 positive influenza results have been reported for the 2015-16 season. Influenza results for the 2015-16 season are in the table below.

| Respiratory Virus | # Positive Respiratory Virus Results by Region | | | | Total | # Specimens Antigenically Characterized | # Tested for Antiviral Resistance |
|-------------------|--|---|----|----|-------|--|-----------------------------------|
| | C | N | SE | SW | | | # Resistant / Total # Tested |
| 2009 A/H1N1pdm | 1 | | 11 | | 12 | 2* (2 A/California/07/2009-like (H1N1)pdm09**) | 1 / 2 |
| Influenza A/H3 | 3 | | 8 | 2 | 13 | 2* (2 A/Switzerland/9715293/2013-like†) | |
| Influenza B | | | 1 | | 1 | | |
| RSV | | | 2 | | 2 | | |

*Specimens antigenically characterized by CDC; **A/California/07/2009-like (H1N1)pdm09 is the H1N1 component of the 2015-16 Northern Hemisphere flu vaccines; †A/Switzerland/9715293/2013-like (H3N2) is the H3N2 component of the 2015-16 Northern Hemisphere flu vaccines.

In addition, 11 sentinel clinical labs (3SE,2SW,6C) reported influenza results. Two labs (SE,SW) reported sporadic influenza A activity. Two labs (SE,SW) reported sporadic influenza B activity. Four labs (SE,SW,C) reported low or slightly elevated Parainfluenza activity. Six labs (SE,SW,C) reported low or increasing RSV activity. Four labs (SE,SW,C) reported low or slightly elevated Adenovirus activity. One lab (SW) reported sporadic hMPV activity. Most testing volumes are in the low to moderate range with gradual increases continuing.

Influenza Congregate Settings Outbreaks

There was 1 new respiratory facility outbreak reported (influenza A/H3). There have been a total of 2 respiratory facility outbreaks reported to MDHHS for the 2015-16 season. Respiratory facility outbreaks are listed in the table below by facility type and surveillance region.

| Facility Type | C | N | SE | SW | Total |
|---|----------|----------|----------|----------|----------|
| K-12 School | 0 | 0 | 0 | 1 | 1 |
| Long-term Care / Assisted Living Facility | 1 | 0 | 0 | 0 | 1 |
| Total | 1 | 0 | 0 | 1 | 2 |

Influenza-associated Pediatric Mortality

No influenza-associated pediatric deaths have been reported to MDHHS for the 2015-16 season.

National: In the United States, flu activity increased slightly but remained low overall with 1.9% of outpatient visits due to influenza-like illness, which is below the national baseline of 2.1%. Four of 10 regions reported ILI at or above region-specific baselines. No influenza-associated pediatric deaths were reported, for a total of 3 pediatric deaths for the 2015-16 flu season. Additional information is in the weekly FluView reports available at: www.cdc.gov/flu/weekly/.

International: Globally, influenza activity generally remained low in both hemispheres. In a few countries in Central Asia and Northern Europe, there were slight increases in flu detections in recent weeks. More information is available at: www.who.int/influenza/surveillance_monitoring/updates/latest_update_GIP_surveillance/en/.

FluBytes



AVIAN INFLUENZA NEWS IN NORTH AMERICA

- CDC: [For clinicians: Evaluating and managing patients exposed to birds infected with highly pathogenic avian influenza \(HPAI\) A \(H5\) viruses](#) (Dec. 16, 2015)
- CDC: [Self-observation instructions for demobilizing H5 bird flu responders](#) (Dec. 16, 2015)
- [USDA seeking contractors for avian influenza vaccines](#)
- [Kansas Dept. of Agriculture lifts ban on poultry exhibitions and mingled flocks](#)
- Any reports of sick or dead birds should be forwarded immediately to the proper agency:
 - For domestic poultry, contact MDARD:
 - M-F 8AM-5PM, 1-800-292-3939
 - After hours/weekends, 517-373-0440
 - For wildlife (die-off of waterfowl, gulls, or shorebirds), contact DNR:
 - M-F 8AM-5PM, 517-336-5030
 - After hours/weekends, 1-800-292-7800

AVIAN INFLUENZA INTERNATIONAL NEWS

- [France reports 8 new avian flu outbreaks, raising total to 61](#)
- [Avian influenza of high pathogenicity \(H5N1, H5N2, and H5N9\) and low pathogenicity \(H5N2, H5N3\) in poultry in France](#)
- WHO: [Influenza at the human-animal interface - Summary and assessment as of 14 December 2015](#)
- [H9N2 infects 4 children in China](#)
- [China reports 2 more human H7N9 avian influenza cases, 6 cases reported since October](#)

FLU WEBSITES

www.michigan.gov/flu
www.cdc.gov/flu
www.flu.gov
<http://vaccine.healthmap.org/>

MMWR: ERRORS AT FLU VACCINE CLINIC

An article was recently published in *MMWR* about [vaccine administration errors at an employee flu vaccination clinic](#) in New Jersey earlier this flu season and how the state immunization program responded. CDC has [guidelines](#) for planning large-scale flu vaccination clinics and a [resource guide](#) for vaccine administration and storage and handling.

INFLUENZA-RELATED JOURNAL ARTICLES

- [Highly pathogenic avian influenza virus, Midwestern United States](#)
 - Numerous avian flu outbreaks in Minnesota and Iowa appeared to have been caused by local spread rather than multiple introductions from wild birds
- [Transmission of the first influenza A\(H1N1\)pdm09 pandemic wave in Australia was driven by undetected infections: pandemic response implications](#)
 - Those with low-level symptoms and asymptomatic infections were responsible for most of the transmission
- [Cochrane review summary: influenza vaccines for preventing acute otitis media in infants and children](#)
- [Influenza immunization among resident physicians in an urban teaching hospital](#)

OTHER INFLUENZA-RELATED NEWS

- CDC: [143.3 million doses of flu vaccine distributed in U.S.](#)
- [US flu activity low, with H1N1 back on the scene and 1 novel case](#)
- [Judge blocks NYC flu vaccine requirements for preschoolers](#)

Archived editions of FluBytes are available [here](#) and MI FluFocus archives are [here](#).

For questions or to be added to the distribution list, please contact Stefanie Cole at ColeS4@michigan.gov.

MDHHS Contributors

Bureau of Epidemiology – S. Bidol, MPH, S. Cole, RN, MPH, S. Eckel, MPH
Bureau of Labs – B. Robeson, MT, V. Vavricka, MS