



How to...

Import Federal and State Truck Libraries

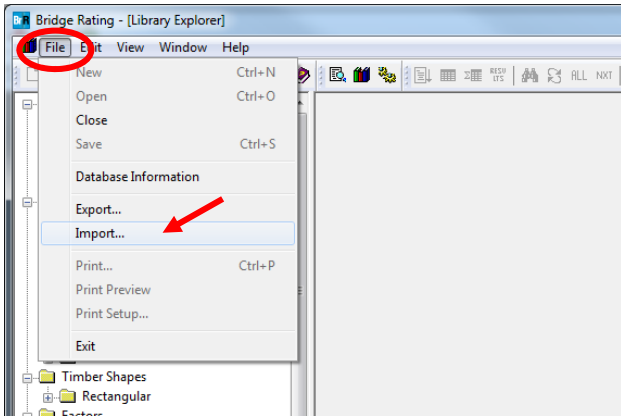
Task Overview: Import Federal and State truck libraries to use for bridge load rating in AASHTOWare BrR.

The following .xml files are available for download:

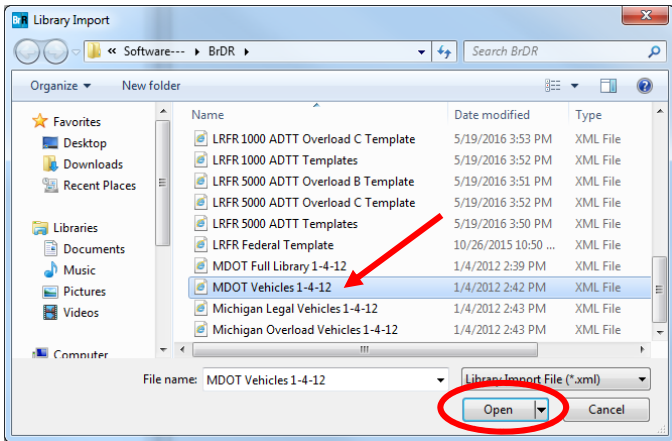
- **Michigan Legal Vehicles**
 - Includes all Michigan Legal Vehicles (1-Unit Trucks, 2-Unit Trucks, 3-Unit Trucks)
- **Michigan Overload Vehicles**
 - Includes all Michigan Overload Trucks (Class A, Class B, Class C)

Instructions

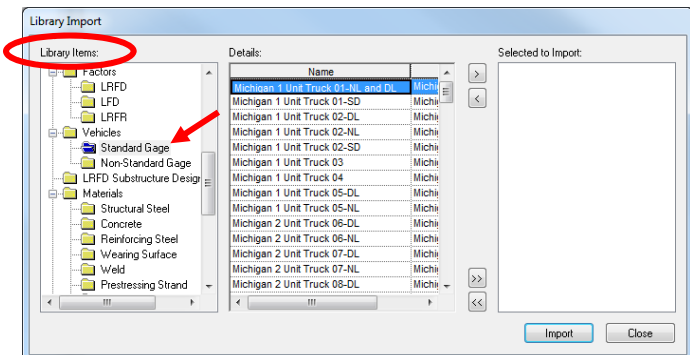
1. From the Library Explorer window (📁), select **File** then **Import**



2. Select the library to be imported and click **Open**

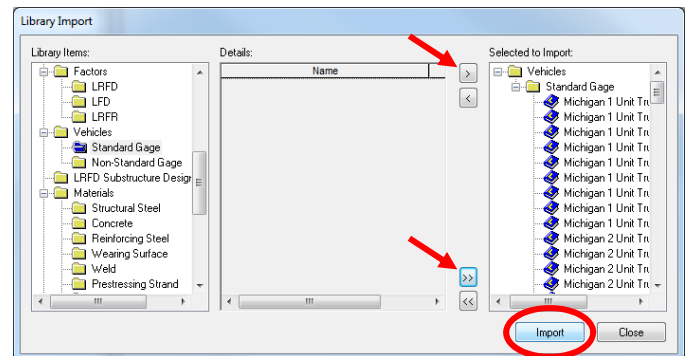


3. Under *Library Items* select the **Standard Gage** subfolder under the **Vehicles** folder.



To import *all* vehicles in the folder, click the double arrows. (Single arrows will import only highlighted vehicle)

Click **Import**



4. From the Rate window (📊), all imported vehicles can be found under *Vehicle Selection* in the **Agency** section.

