

GENERAL DESIGN GUIDELINES - THIS SHEET IS TYPICALLY USED ONLY ON NEW & MAJOR RECONSTRUCT PROJECTS OR PROJECTS WITH MAJOR STORM SEWER WORK. SHEETS MUST SHOW THE FOLLOWING INFORMATION:

- 1] LABEL COUNTY DRAINS AND SHOW THE DRAINAGE EASEMENT WITHIN THE PROJECT LIMITS, MAX SCALE 1"=300' .
- 2] THE DIRECTION OF FLOW FOR ALL PROPOSED AND EXISTING DRAINS, DITCHES AND CULVERTS. (WATER COURSES)
- 3] NAMES OF STREETS, HIGHWAY AND RAILROADS.
- 4] ENLARGE THE SIZE OF THE STATION TEXT AT EVERY 10TH STATION, EX 270, 280, 290 ETC.
- 5] NORTH ARROW
- 6] IN A BOX, PROVIDE SIZE OF CULVERT, CONTRIBUTING DRAINAGE AREA (A), DESIGN DISCHARGE IN CFS FOR CULVERTS Q50 & Q100 & FOR STORM SEWER WITH OUTLET PROVIDE TOTAL DRAINAGE AREA (A) & Q10. DRAINAGE AREA SHALL BE SHOWN IN ACRES, OR SQUARE MILES IF GREATER THAN 1280 ACRES.
- 7] PROVIDE THE OUTLINE OF PROPOSED ROADWAY.
- 8] IF APPLICABLE, SHOW LOCATION OF STORM WATER STRUCTURAL BEST MANAGEMENT PRACTICE (BMP) IN A BOX. EXAMPLE, ARROW POINT TO IT WITH A BOX GIVING STATION, TYPE OF MANAGEMENT USED



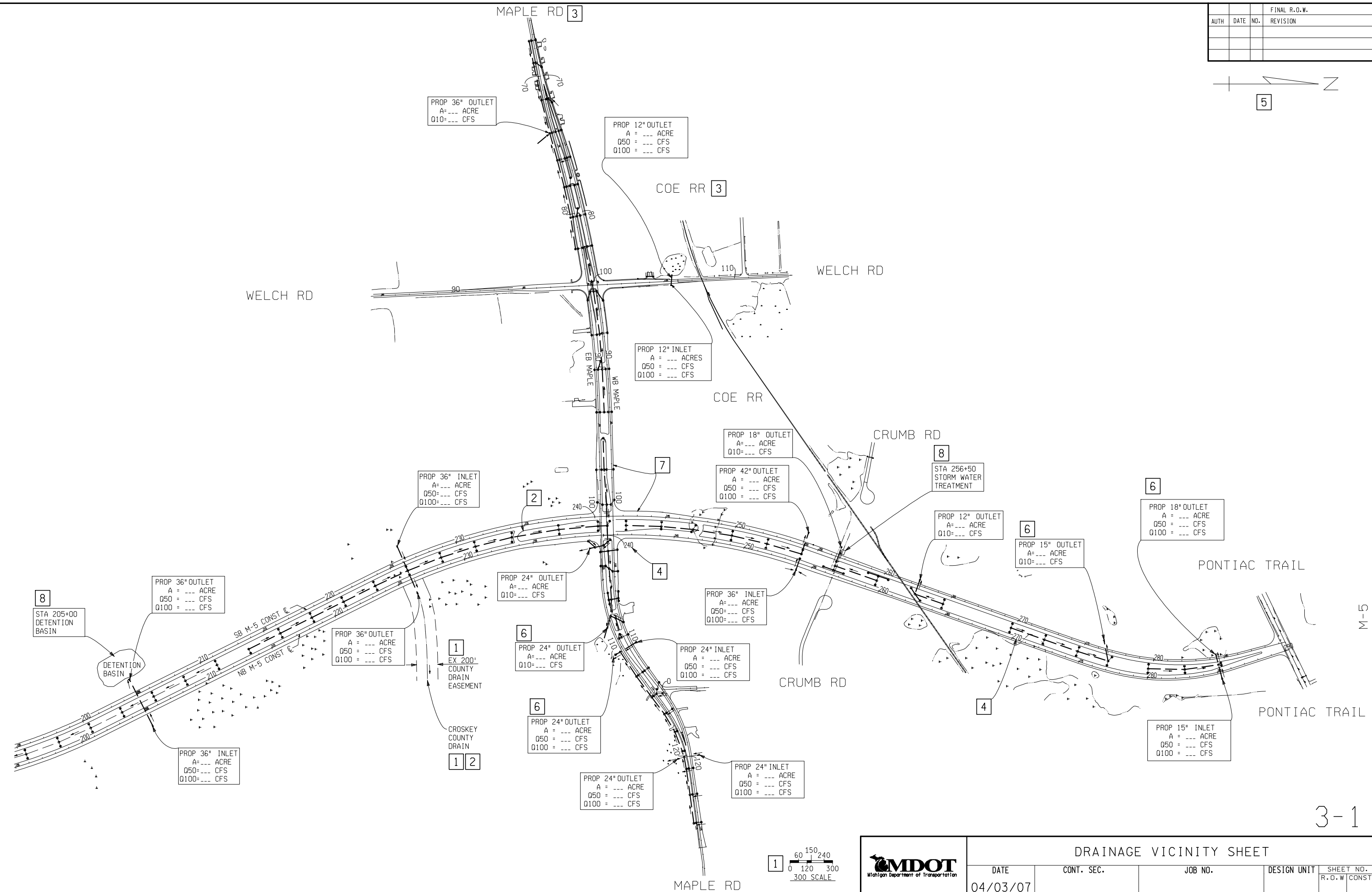
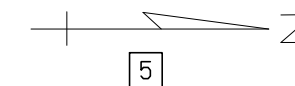
(SEE CHAPTER 9 OF DRAINAGE MANUAL).

- 9] IF AVAILABLE, SHOW SEWER PROFILE.
- 10] SHOW DRAINAGE DISTINCT BOUNDARIES.

NOTE : DRAINAGE AND ROW VICINITY SHEETS MAY BE COMBINED, ON A PER PROJECT BASIS. FOR DRAINAGE AREAS IN EXCESS OF TWO SQUARE MILES (1280 ACRES), A HYDRAULIC SUMMARY TABLE IS REQUIRED ON PLAN SHEET WITH CULVERT CROSSING. REFER TO CHAPTER 5, APPENDIX D, OF THE DRAINAGE MANUAL FOR ADDITIONAL INFORMATION.

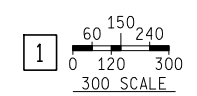
DRAINAGE VICINITY SHEETS

FINAL R.O.W.		
AUTH	DATE	NO. REVISION



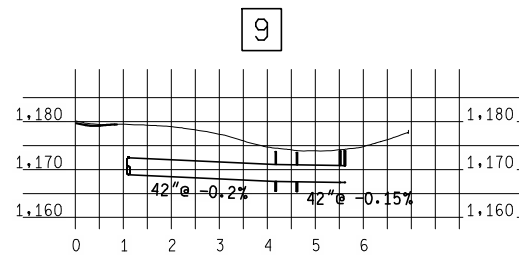
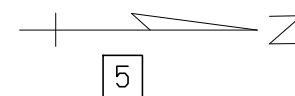
DATE: _____ WORKED ON BY: _____ CHECKED BY: _____ FILE NAME: _____

3-1



MDOT Michigan Department of Transportation					DRAINAGE VICINITY SHEET				
DATE		CONT. SEC.		JOB NO.		DESIGN UNIT		SHEET NO.	
04/03/07								R.O.W CONST.	

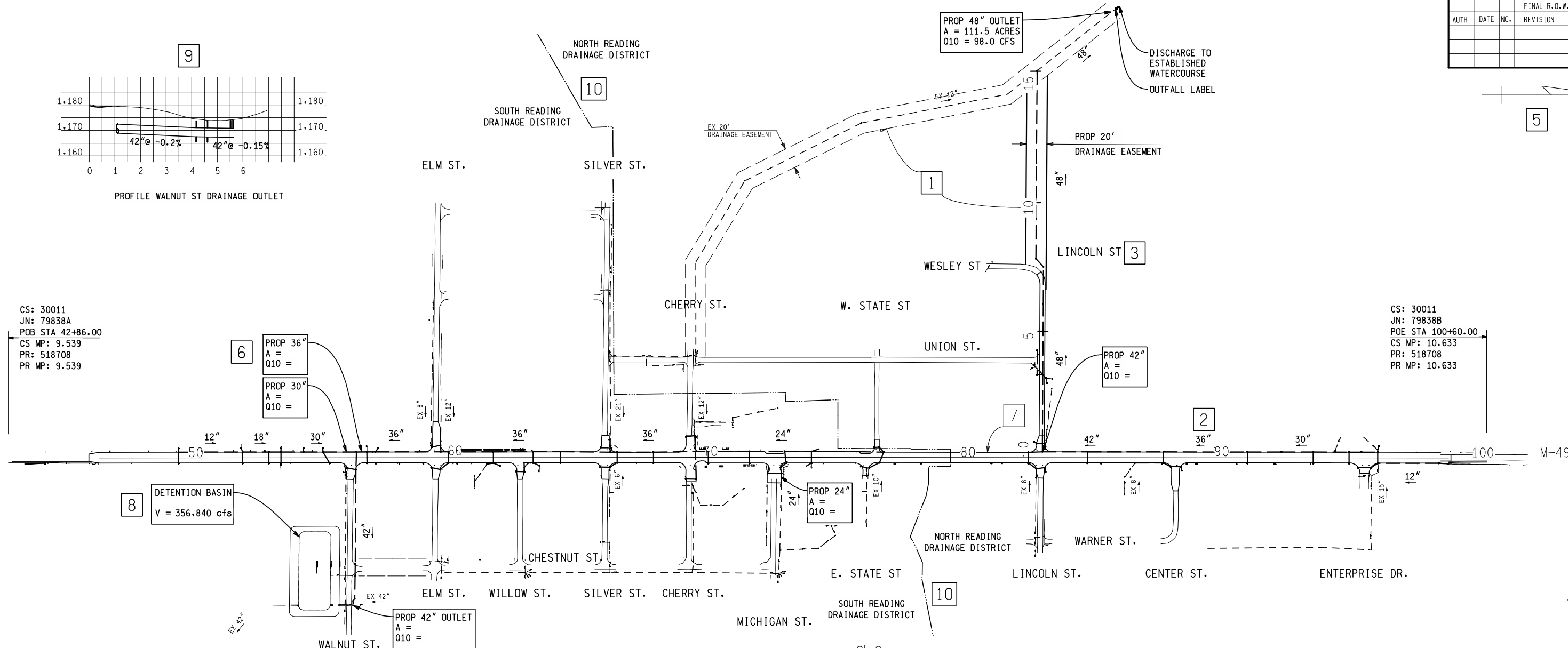
FINAL R.O.W.			
AUTH	DATE	NO.	REVISION



PROFILE WALNUT ST DRAINAGE OUTLET

CS: 30011
 JN: 79838A
 POB STA 42+86.00
 CS MP: 9.539
 PR: 518708
 PR MP: 9.539

CS: 30011
 JN: 79838B
 POE STA 100+60.00
 CS MP: 10.633
 PR: 518708
 PR MP: 10.633



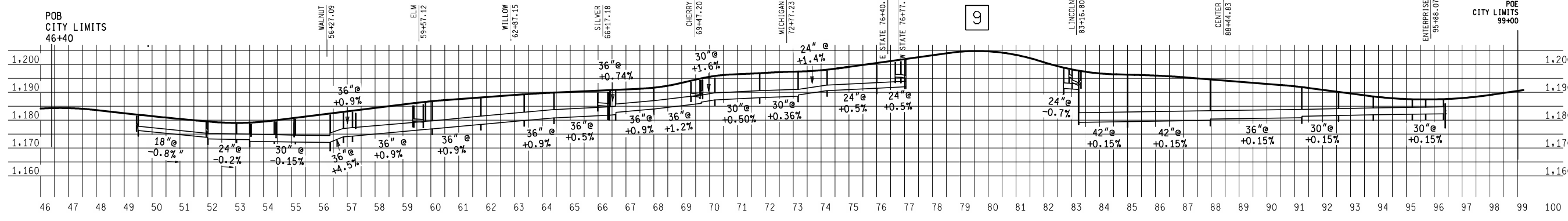
8 DETENTION BASIN
 V = 356,840 cfs

6 PROP 36"
 A =
 Q10 =
 PROP 30"
 A =
 Q10 =

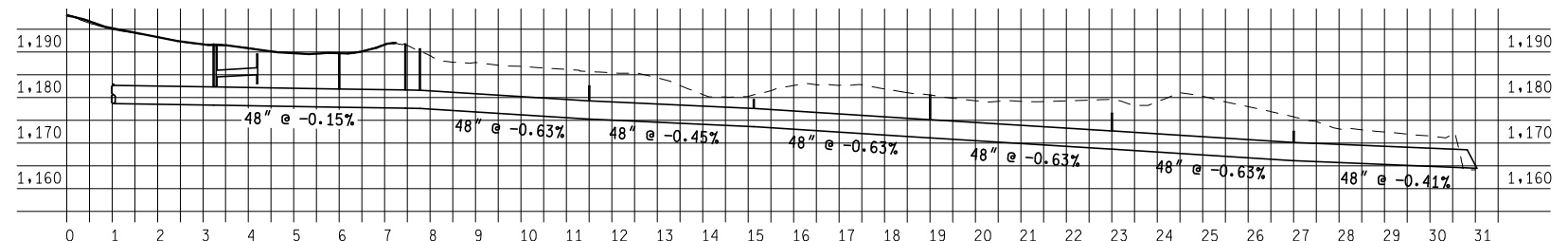
PROP 42"
 A =
 Q10 =

PROP 24"
 A =
 Q10 =

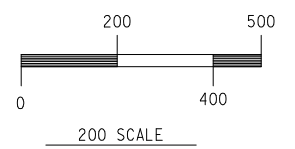
PROP 42" OUTLET
 A =
 Q10 =



PROFILE M-49



PROFILE LINCOLN ST DRAINAGE OUTLET



M-49 DRAINAGE VICINITY SHEET

DATE	CONT. SEC.	JOB NO.	DESIGN UNIT	SHEET NO.
02/05/08				R.O.W CONST.

3-2

CHECKED BY: WORKED ON BY: DATE: FILE NAME: