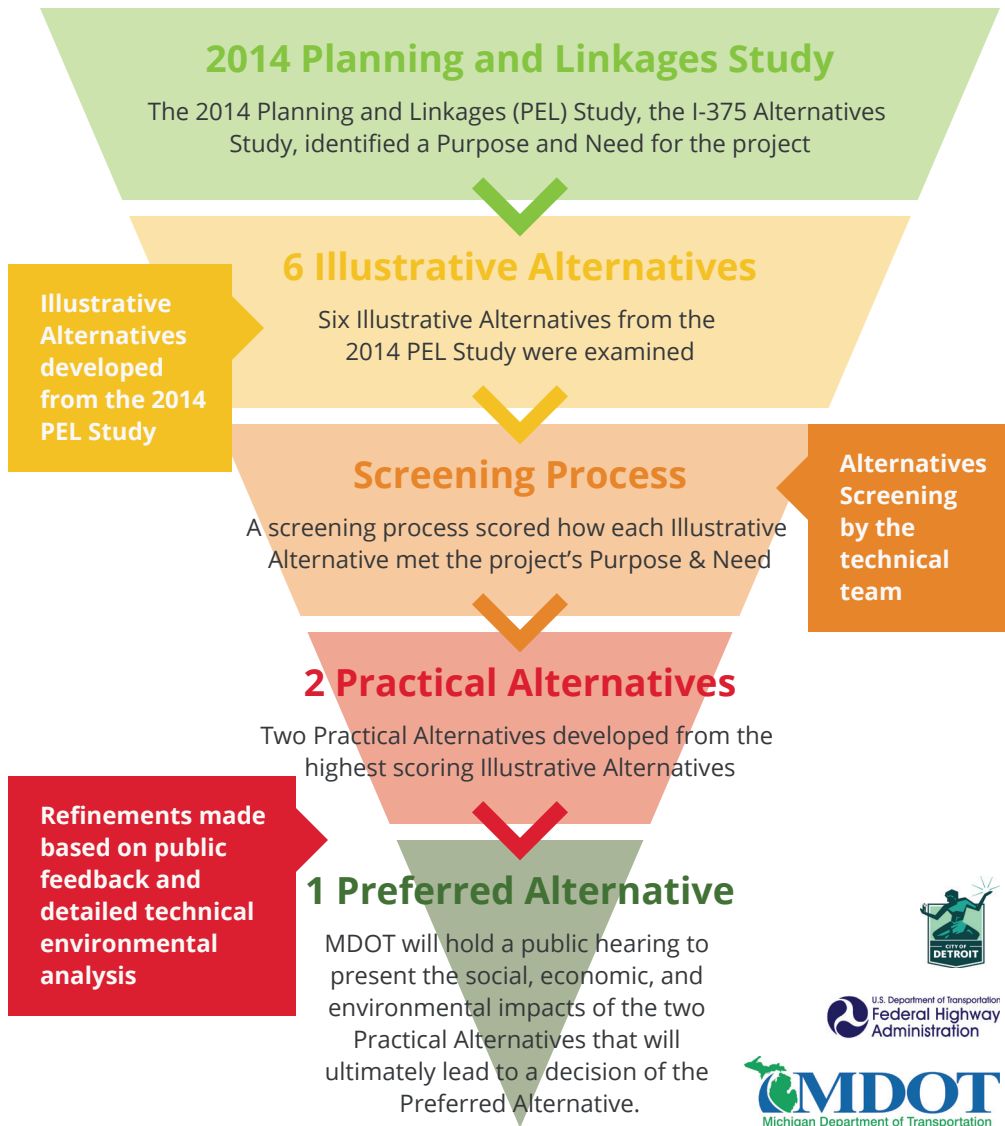


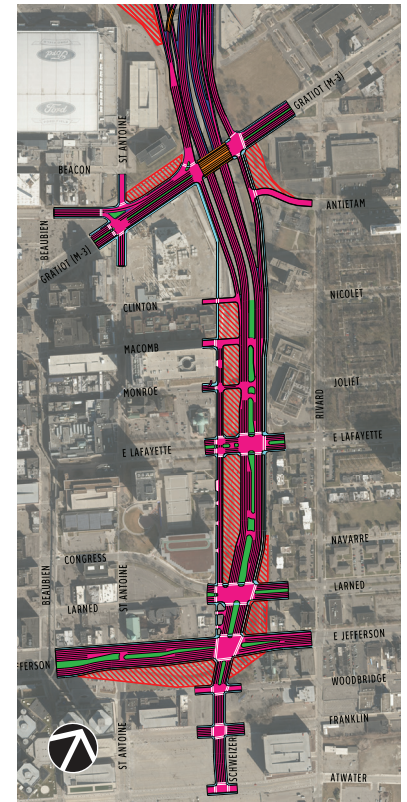
I-375 IMPROVEMENT PROJECT

I-375 was built as a gateway to Downtown Detroit in 1964. After 50 years of use, it needs to be reconstructed. **MDOT is deciding what to do with the I-375 corridor and the I-75/I-375/Gratiot Connector interchange.**

SCREENING PROCESS

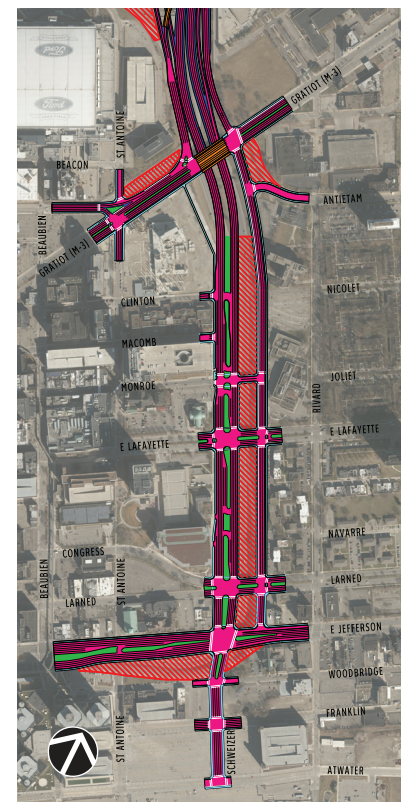


PRACTICAL ALTERNATIVE 4



*Freeway interchange not shown

PRACTICAL ALTERNATIVE 5



*Freeway interchange not shown

SCREENING RESULTS

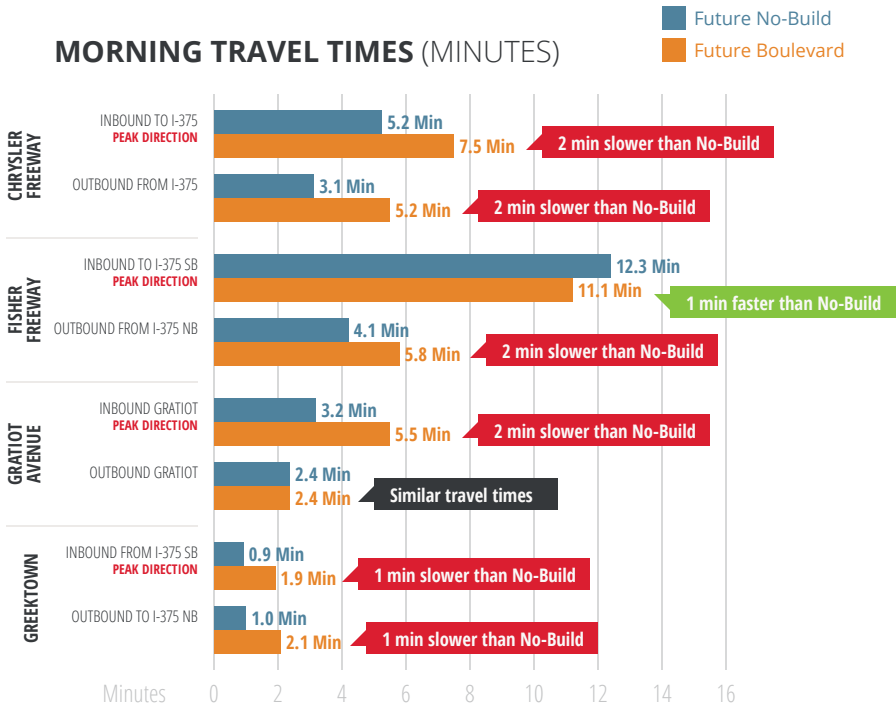
ILLUSTRATIVE ALTERNATIVES

	1	2	3	4	5	6
Meets the Purpose & Need		✓	✓	✓	✓	✓
Best Serves the Needs of Non-Motorized Users			✓	✓	✓	✓
Easiest to Build and Maintain				✓	✓	
Enables Economic Development & Placemaking					✓	

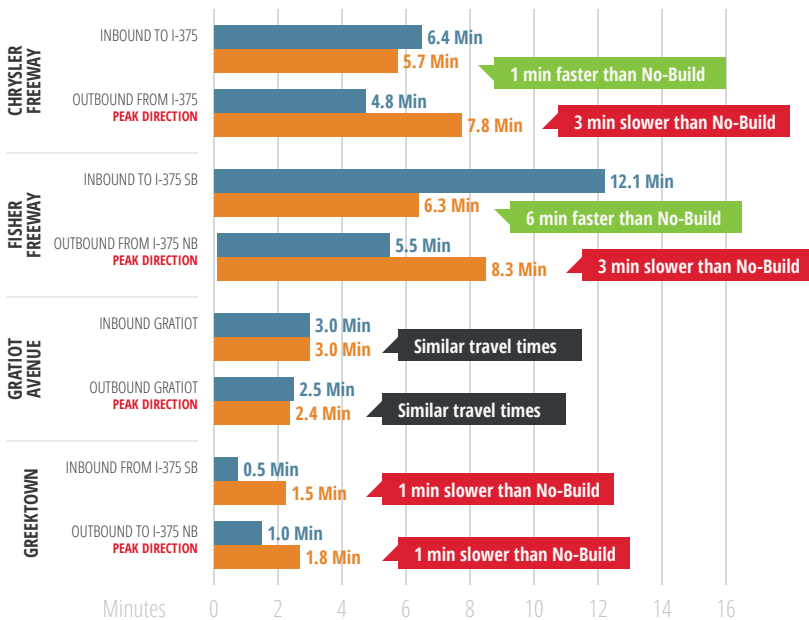
I-375 IMPROVEMENT PROJECT

TRAFFIC OPERATIONS

MORNING TRAVEL TIMES (MINUTES)



AFTERNOON TRAVEL TIMES (MINUTES)



CONTACT US

MDOT PROJECT MANAGER

Jonathan Loree, PE
Senior Project Manager
(313) 967-5420
LoreeJ@michigan.gov

EMAIL US

MDOT-I-375Corridor@michigan.gov

VISIT OUR WEBSITE

www.michigan.gov/i375study

WHAT'S NEXT

FALL/WINTER 2017



Open House Public Meeting to introduce the Practical Alternatives **WE ARE HERE**



Advisory Committee Meetings



Preparation of the Environmental Assessment Report

SPRING 2018



Public Hearing



Identify a Preferred Alternative



Preparation of Final Documentation

SUMMER 2018



Early Preliminary Engineering Phase Risk Mitigation:

- Cost-Estimate
- Utility Coordination
- Develop Construction Procurement Method
- 30% Design Plans

FALL 2019



Begin Final Design Phase

FALL 2021



Construction Letting

SUMMER 2022



Construction Starts