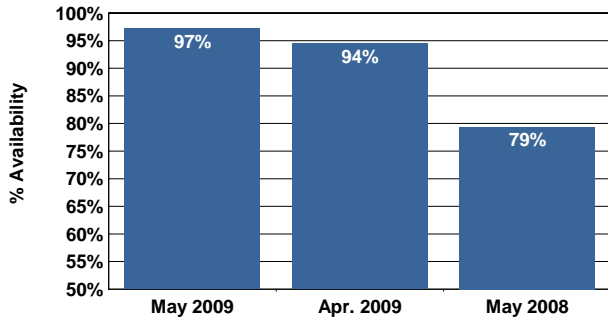
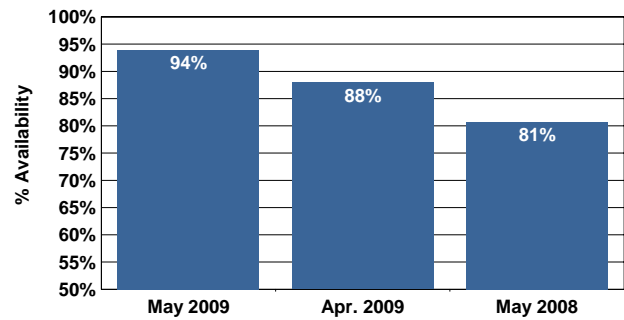


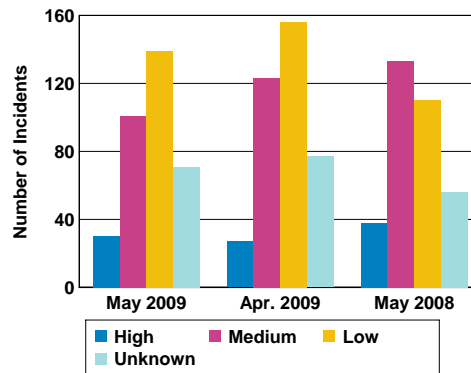
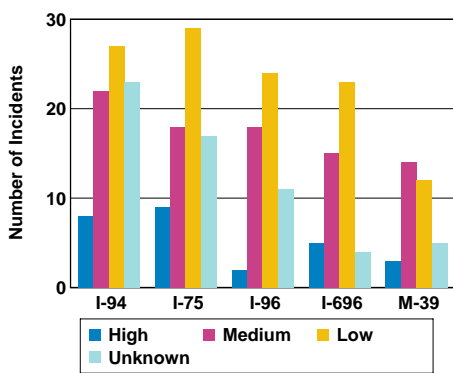
DMS Availability



CCTV Camera Availability

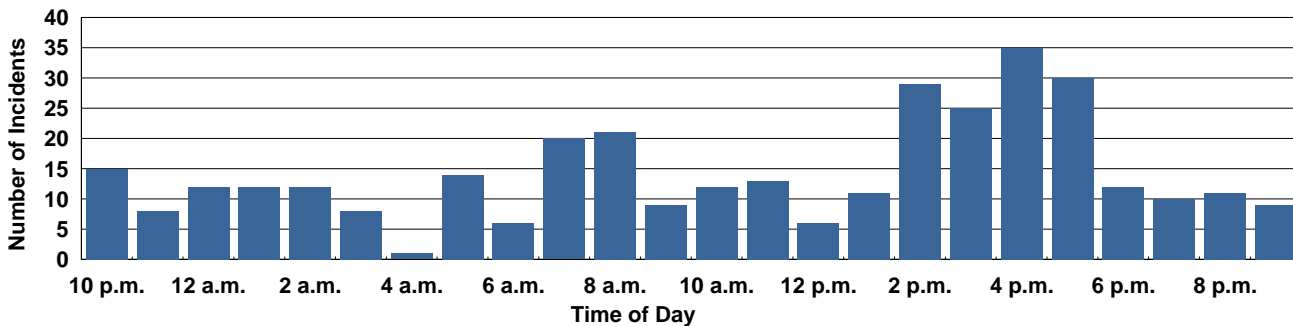


Total Incident Severity/Duration by Month

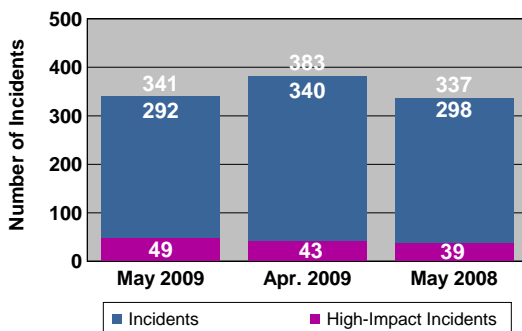


- Single-lane closures equal to 90+ minutes, partial closures (more than one lane, but not all) equal to 45+ minutes, or total closures (all lanes) 20+ minutes
- Shoulder closures equal to 90+ minutes, single-lane closures between 20 and 89 minutes, partial closures (more than one lane, but not all) between 20 and 44 minutes, and total closures (all lanes) less than 20 minutes
- Shoulder closures less than 90 minutes, single-lane closures or partial closures (more than one lane, but not all) less than 20 minutes
- The duration and/or severity is unknown

Total Incidents per Hour



Total Number of Incidents



High-Impact Incident Activity

	May 2009	Apr. 2009	May 2008
Freeway Closures	13	8	17
All Lanes Closed			
Lane Closures	30	32	21
Only One Lane Open			
Ramp Closures	6	3	1
Freeway-to-Freeway			
Total	49	43	39

High-impact incidents account for **14%** of the total incidents in May.

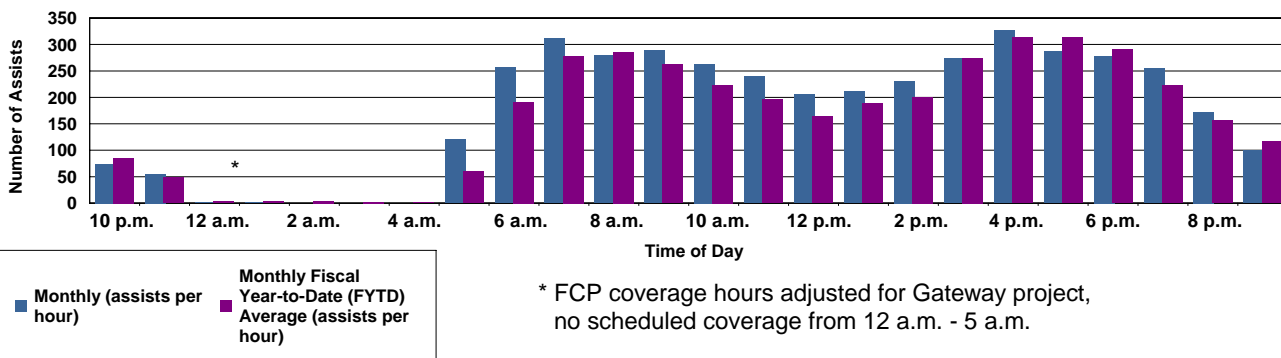
Freeway Courtesy Patrol (FCP) Service Area



Motorist Quote of the Month:

“I recently had a flat tire on I-75. Within minutes, one of your courtesy vans arrived, and the driver efficiently changed the tire and helped me out of a bad situation. He was indeed a credit to himself and MDOT. The incident occurred about 5:45 p.m. on Tuesday, May 5, 2009. I certainly would have contacted you had your courtesy patrolman been rude or inefficient. Thus, it’s only appropriate that I also write when he did his job in a professional manner.”

FCP Assists by Time of Day



FCP Average Service Times

