

Michigan State Transportation Commission

August 27, 2009

**Director Kirk T. Steudle, P.E.
Michigan Department of Transportation**



Today's Topics

- American Recovery and Reinvestment Act - High Speed Rail Update
- Transportation System Performance Measures

American Recovery and Reinvestment Funding High Speed Rail Update



Midwest Governor's High Speed Rail

- Illinois, Indiana, Iowa, Michigan, Minnesota, Missouri, Ohio and Wisconsin
- City of Chicago
- Letter to Secretary LaHood - April 10, 2009
- Memorandum of Understanding - July 27, 2009
- Leadership Group



Governor's Press Conference and Train Ride

- Dearborn
- On board train
- Jackson



High Speed Rail Applications - Four Project Applications

- West Detroit track connection
 - \$48.6 million
 - Improve on-time performance
 - Save 5-10 minutes per train
- DIFT external projects
 - \$72.9 million
 - Eliminate conflicts
 - Improve on-time performance

High Speed Rail Applications – Four Project Applications

- Track Stabilization & Acquisition
 - \$251.1 million
 - Track rehabilitation
 - Train control

- MWRRI Phase 1 Improvements
 - \$413.6 million
 - Track and train control improvements
 - High speeds
 - More trains

High Speed Rail Applications – Five Station Projects

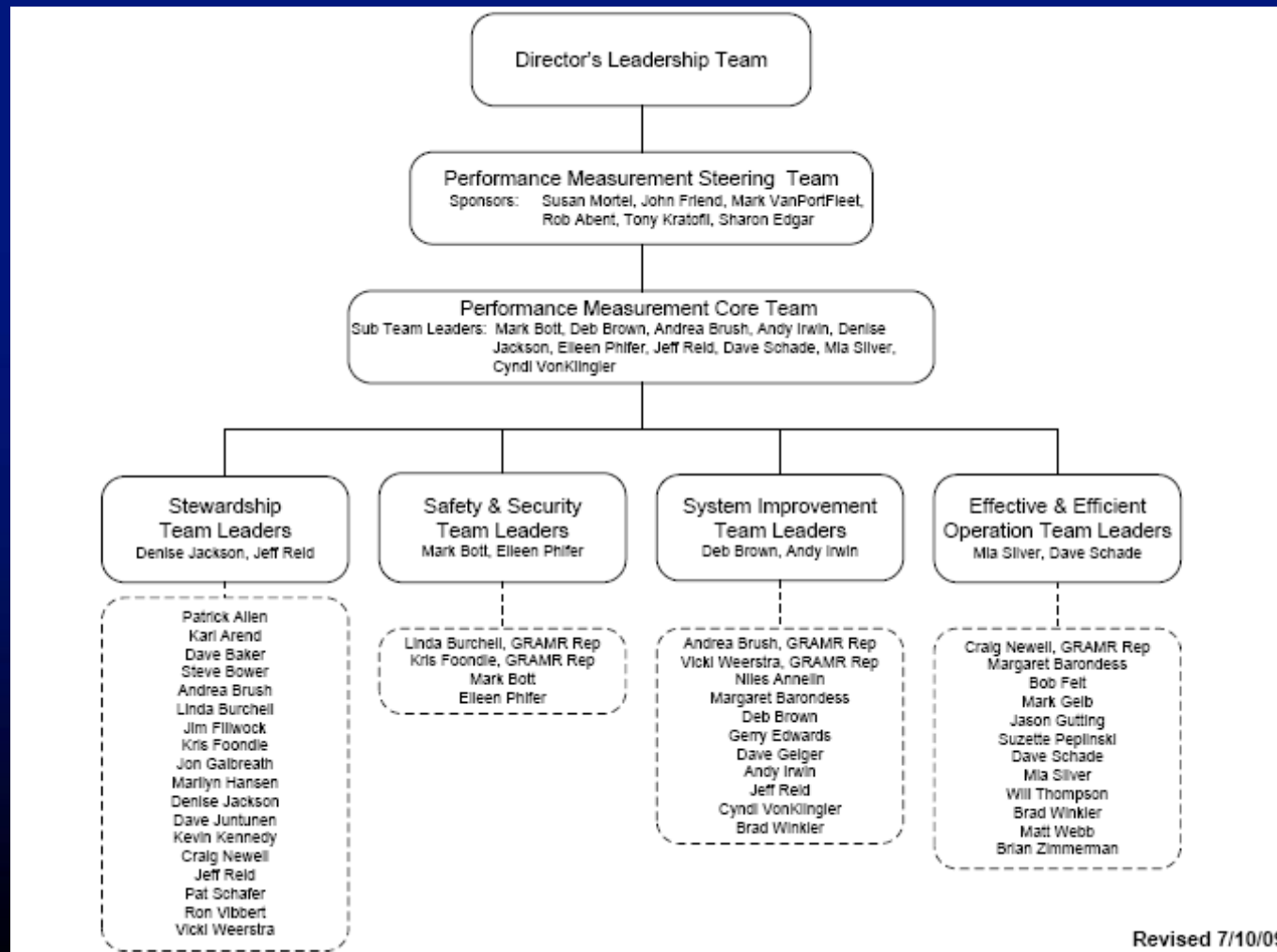
- Troy/Birmingham
 - \$8.4 million
 - New facility
- Dearborn
 - \$28.2 million
 - New facility
- Battle Creek
 - \$3.6 million
 - Renovations
- Ann Arbor
 - \$6.5 million
 - Preliminary engineering
 - Environmental clearance
- Kalamazoo
 - \$0.4 million
 - Covered platform

MDOT Transportation System Performance Measures

Transportation System Performance Measures

- Moves beyond earlier bridge and pavement condition goals to include:
 - All modes and connections between modes
 - Condition of all infrastructure
 - Operating effectiveness (safety, mobility, accessibility)

Team Structure



Transportation System Performance Measures

- Structured around the four goal areas of MiTransportation Plan
- Considers research and the priorities expressed through STC workshop in February 2008
- Uses existing data to the greatest extent possible
- A first phase in terms of content and scope

Transportation System Performance Measures

Find the report on the MDOT Web site at this location:

www.michigan.gov/mdotpr

Click on “Maps and Publication” select “Reports”

First item under “MDOT Reports”

Questions?