

MICHIGAN DEPARTMENT OF STATE POLICE

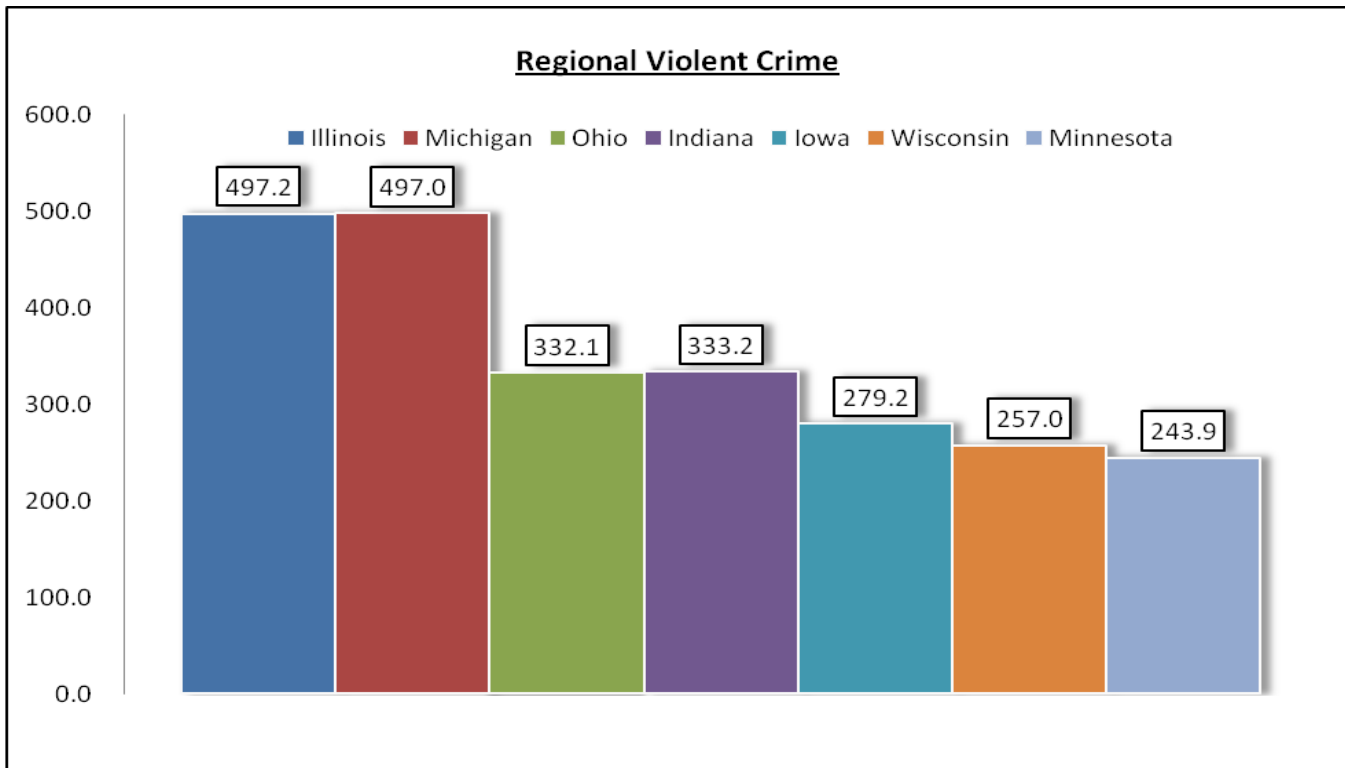


2009 FBI UCR Violent Crime in Michigan

Area	Population	Violent Crime		Murder and Non-Negligent Manslaughter		Forcible Rape		Robbery		Aggravated Assault	
		Offenses	Rate per 100,000	Offenses	Rate per 100,000	Offenses	Rate per 100,000	Offenses	Rate per 100,000	Offenses	Rate per 100,000
Michigan	9,969,727	49,547	497.0	627	6.3	4,514	45.3	12,330	123.7	32,076	321.7
Midwestern States	66,836,911	257,827	385.8	3,054	4.6	21,795	32.6	80,724	120.8	152,254	227.8
Total United States	307,006,550	1,318,398	429.4	15,241	5.0	88,097	28.7	408,217	133.0	806,843	262.8

Of the 12 Midwestern States identified by the FBI's Uniform Crime Report (Illinois, Indiana, Michigan, Ohio, Wisconsin, Iowa, Kansas, Minnesota, Missouri, Nebraska, North Dakota, South Dakota), the State of Michigan reported:

- 14.9% of the Population
- 19.2% of all Violent Crimes
- 20.5% of all Murders
- 20.7% of all Rapes
- 15.2% of all Robberies
- 21.0% of all Aggravated Assaults

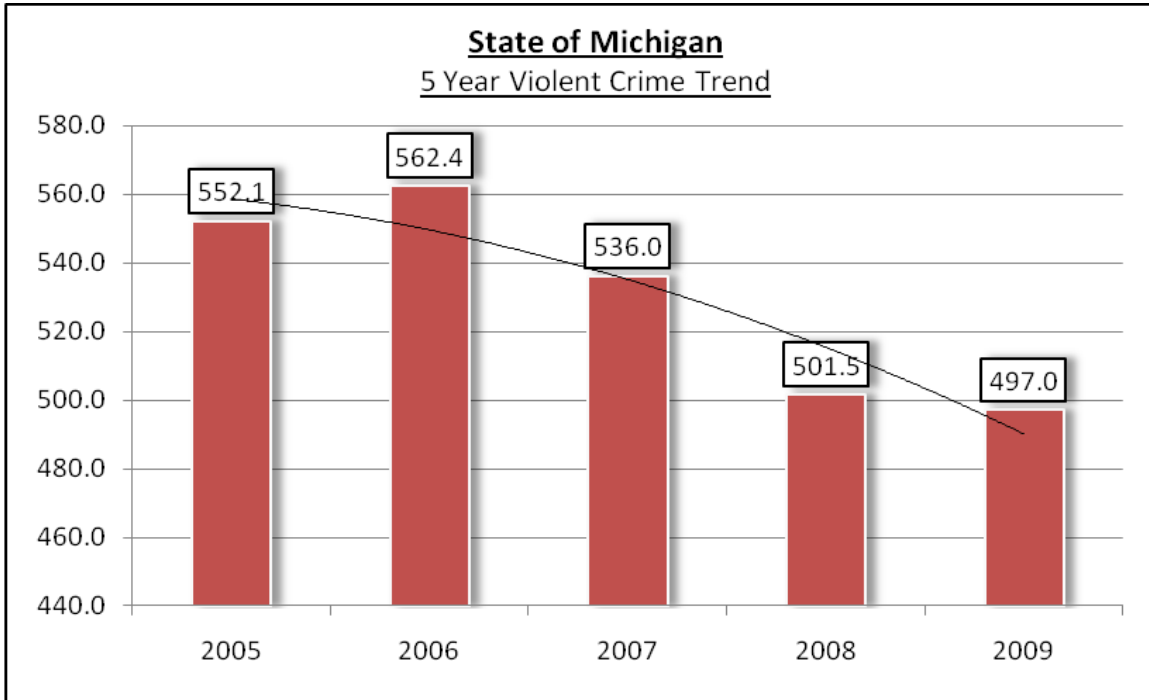


MICHIGAN DEPARTMENT OF STATE POLICE



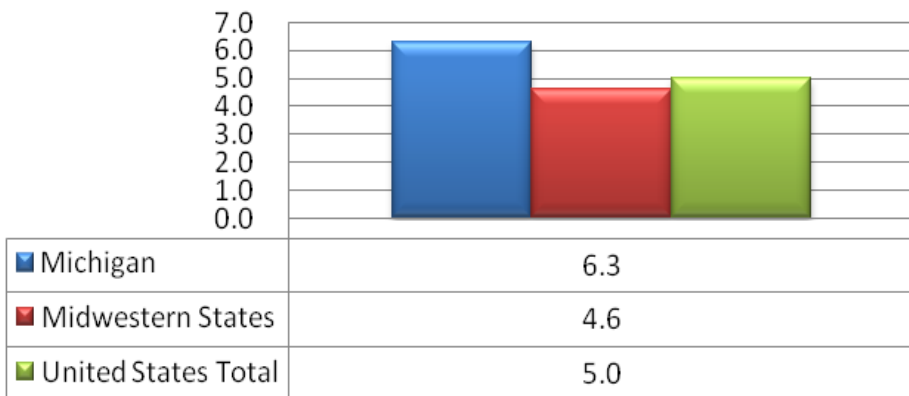
In 2009:

- Michigan reported a violent crime rate of 497.0 violent crimes per 100,000 population which was nearly 29% higher than the Midwestern States violent crime rate of 385.8 violent crimes per 100,000 population.
- Michigan had a 16% higher violent crime rate (497.0) than the National violent crime rate (429.4).



- The violent crime rate in Michigan has declined by nearly 12% from 2006 to 2009.

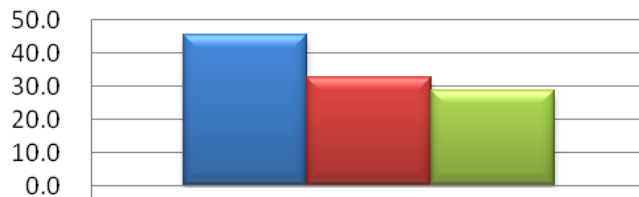
Murder Rate Per 100,000 Population



- Michigan reported 627 Murders in 2009.
- Michigan's rate of 6.3 murders per 100,000 population was 37% higher than the Midwestern states rate of 4.6 and 26% higher than the United States total rate of 5.0.



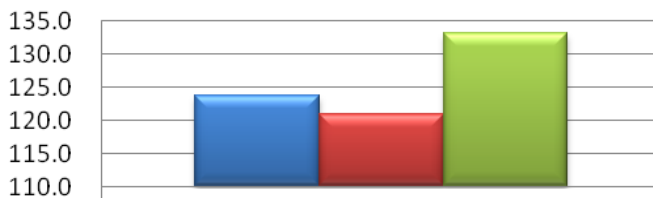
Forcible Rape Rate Per 100,000 Population



Michigan	45.3
Midwestern States	32.6
United States Total	28.7

- Michigan recorded a 39% higher crime rate for *Forcible Rape* (45.3) than that of the Midwestern States (32.6). Additionally, Michigan had a 58% higher crime rate for *Forcible Rape* than the United States rate (28.7).

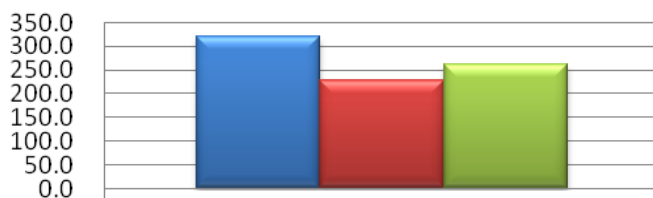
Robbery Rate Per 100,000 Population



Michigan	123.7
Midwestern States	120.8
United States	133.0

- Michigan recorded a 2% higher *Robbery* crime rate (123.7) than the Midwestern States rate (120.8). However, Michigan's *Robbery* crime rate was nearly 8% lower than the United States total rate (133.0).

Aggravated Assault Rate Per 100,000 Population



Michigan	321.7
Midwestern States	227.8
United States Total	262.8

- The crime rate for *Aggravated Assault* in Michigan (321.7) was 41% higher than the Midwestern States rate (227.8) and 22.4% higher than the total US rate (262.8).

*The FBI U.C.R Report 2005-2009 and U.S. Census Bureau
*Data may not be complete due to crime reporting practices.