



I-375 Improvement Project

PUBLIC OPEN HOUSE #2

DECEMBER 5, 2017

375 Improvement Study Public Open House #2 Agenda

- **4 PM- 5 PM OPEN HOUSE**

Time to discuss project with staff

- **5 PM PRESENTATION**

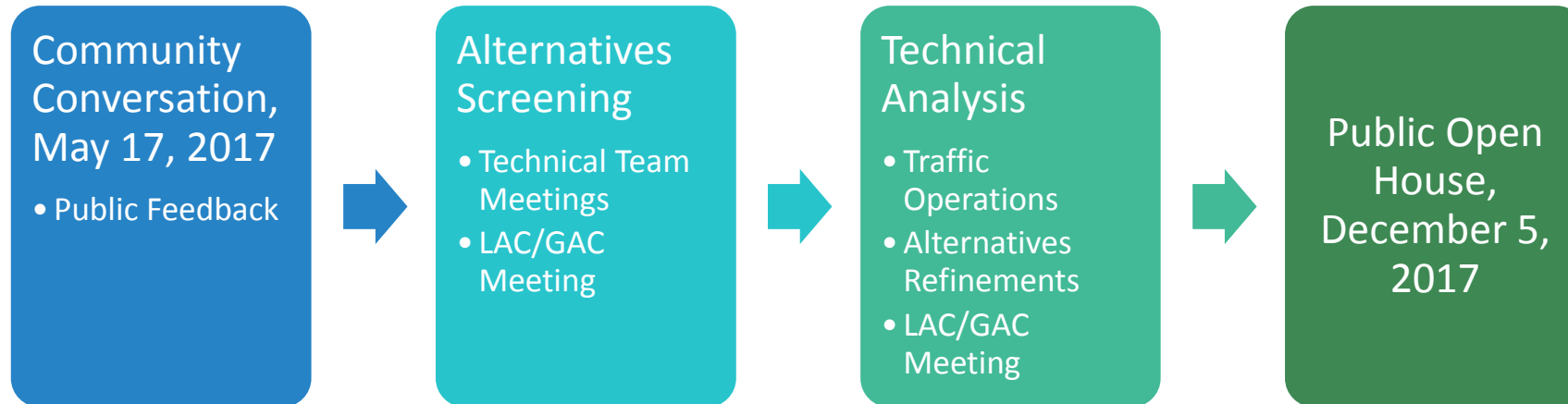
Presentation given by staff. Time for 1:1 Question and Answer following presentation.

- **6 PM PRESENTATION**

Presentation given by staff. Time for 1:1 Question and Answer following presentation.

- **7:30 PM OPEN HOUSE CONCLUDES**

What We've Been Up To



Why Here? Why Now?

1940 1950 1960 1970 1980 1990 2000 2010 2020 2030 2040



GRATIOT AT HASTINGS STREET

- National Federal Highway Act passed (1956)



PARADISE THEATER



- Black Bottom
- Hastings Street
- Paradise Valley

- I-375 construction started (1959)
 - I-375 opens (1964)



- ★ We are Here
EA for 375 Improvement Study (2017)

- I-375 Feasibility Study/EA to improve access to riverfront (1998-2002)
 - MDOT Planning and Environmental Linkages (PEL) Study (2014)
 - Your!Detroit East Riverfront Study (2016-2017)
 - I-375 in MDOT Five Year Program(2022)

Purpose & Need



share your thoughts, shape the vision

Community Workshop
Tuesday, May 24

Please plan to join us on Tuesday, May 24 for the next community workshop. This will be an opportunity to see how your input from our first community workshop is shaping the future of the East Riverfront. A project presentation will be followed by an open house event and chance to talk with the design team and drop by tables to learn about other riverfront programs and activities being planned. The event is free and open to the public!

The event will be held in Eastern Market's Shed 5 at 2934 Russell Street. A 30-minute presentation will begin at 6:00 pm with an open house following through 8:30 pm. Please hold the date for this exciting opportunity to share your thoughts and shape the vision of your riverfront.



Walking Tours
Wednesday, May 25

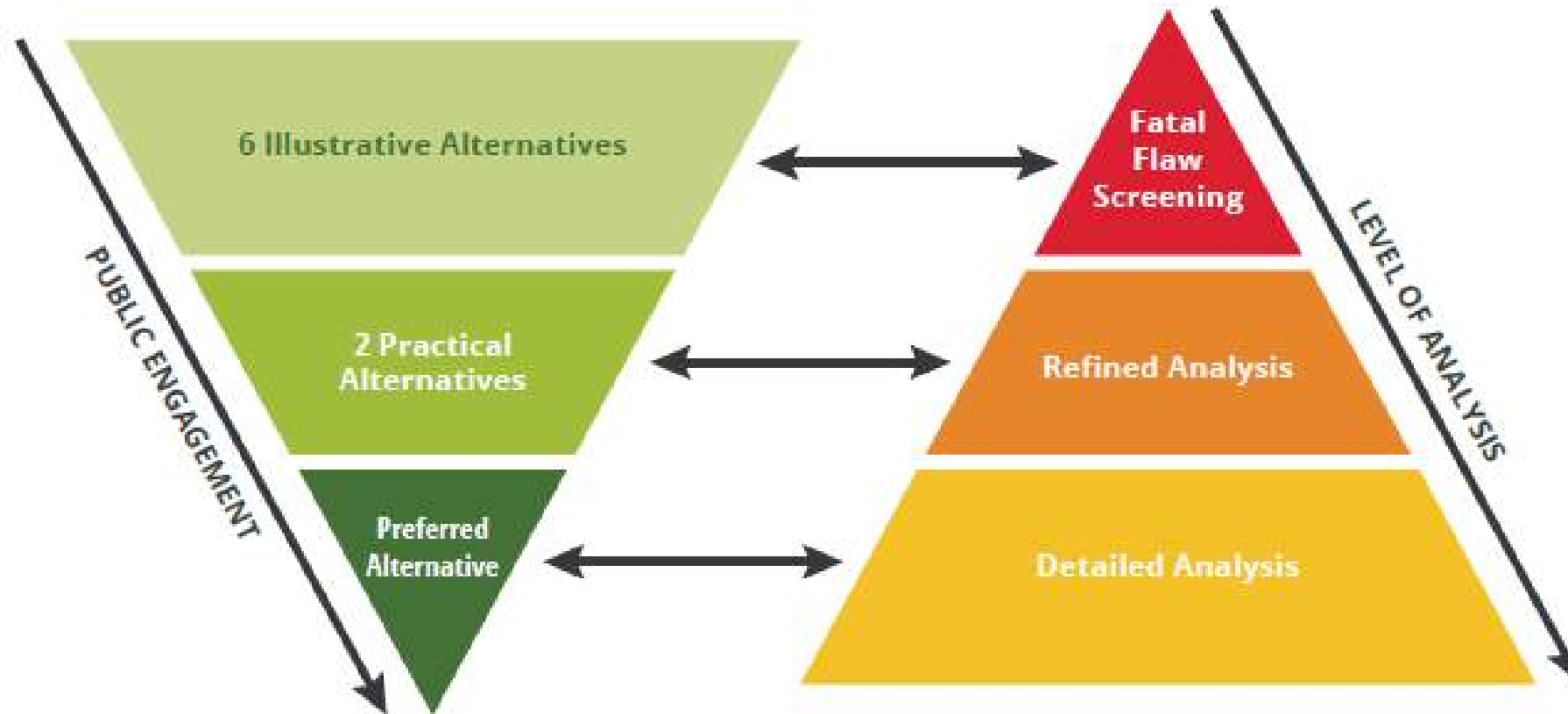
Want to know more about the East Riverfront project and tour the site? Join us for walking tours on Wednesday, May 25, between 4:00 pm and 7:00 pm.

To participate in the tour, meet us at the Outdoor Adventure Center (1801 Atwater St). Each tour will be 60 minutes and a tour will depart every 30 minutes from the Outdoor Adventure Center. From there, we'll tour the riverfront and the surrounding area. The design team will share some of the observation and opportunities that we've started to explore since our initial workshop. The tours are family-friendly and open to all ages.

In the meantime, if you have ideas, questions or concerns, don't hesitate to contact Ritchie Harrison, email: ritchie.harrison@detroitriverfront.org phone: (313) 366 8206



NEPA Process



Alternatives Screening Process

6 Illustrative Alternatives

Six Illustrative Alternatives from the I-375 Alternatives Study were studied



Screening Process

A screening process scored how each Illustrative Alternative met the project's Purpose & Need



2 Practical Alternatives

Two Practical Alternatives were developed from the highest scoring Illustrative Alternatives (4&5)

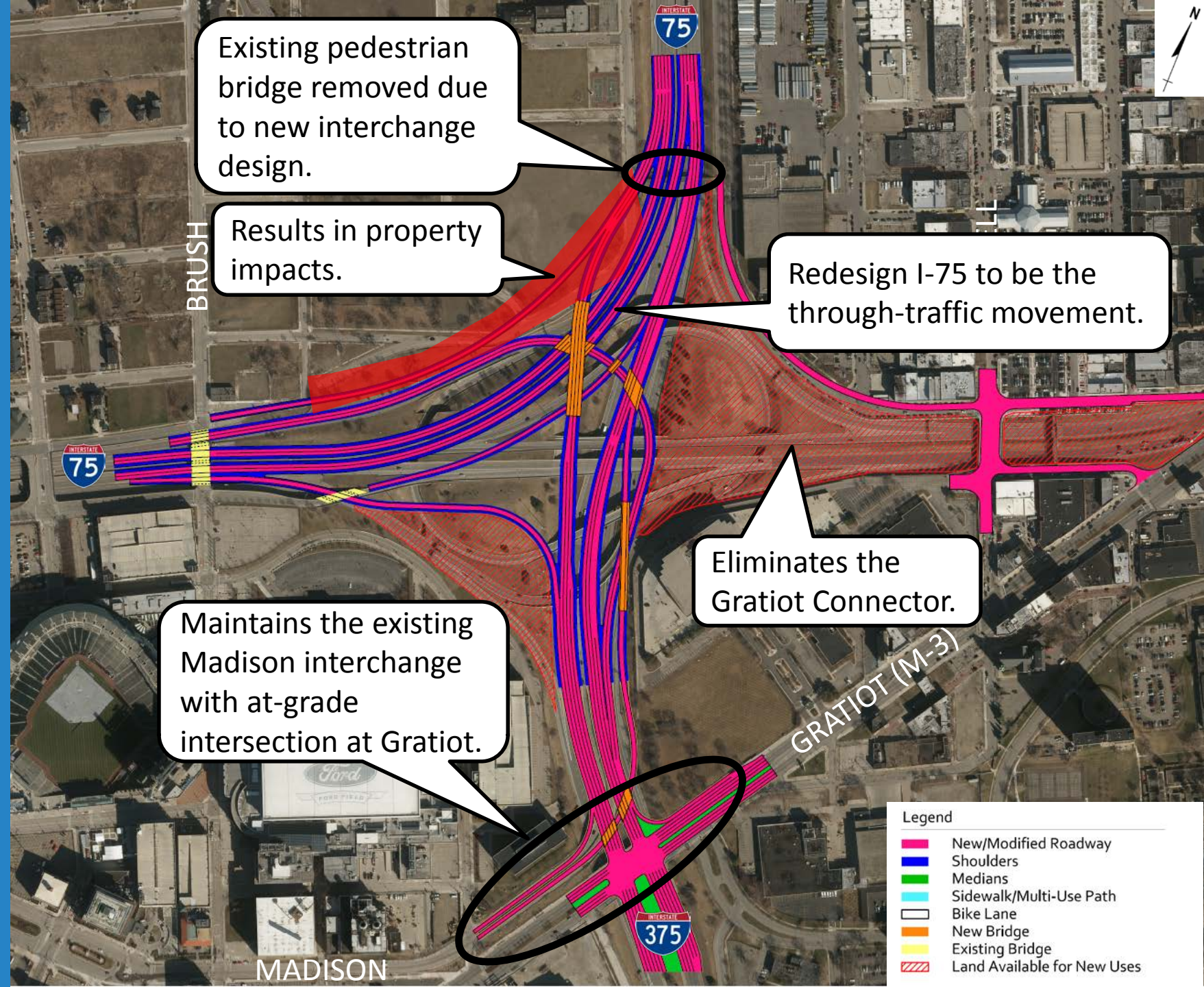


ILLUSTRATIVE ALTERNATIVES

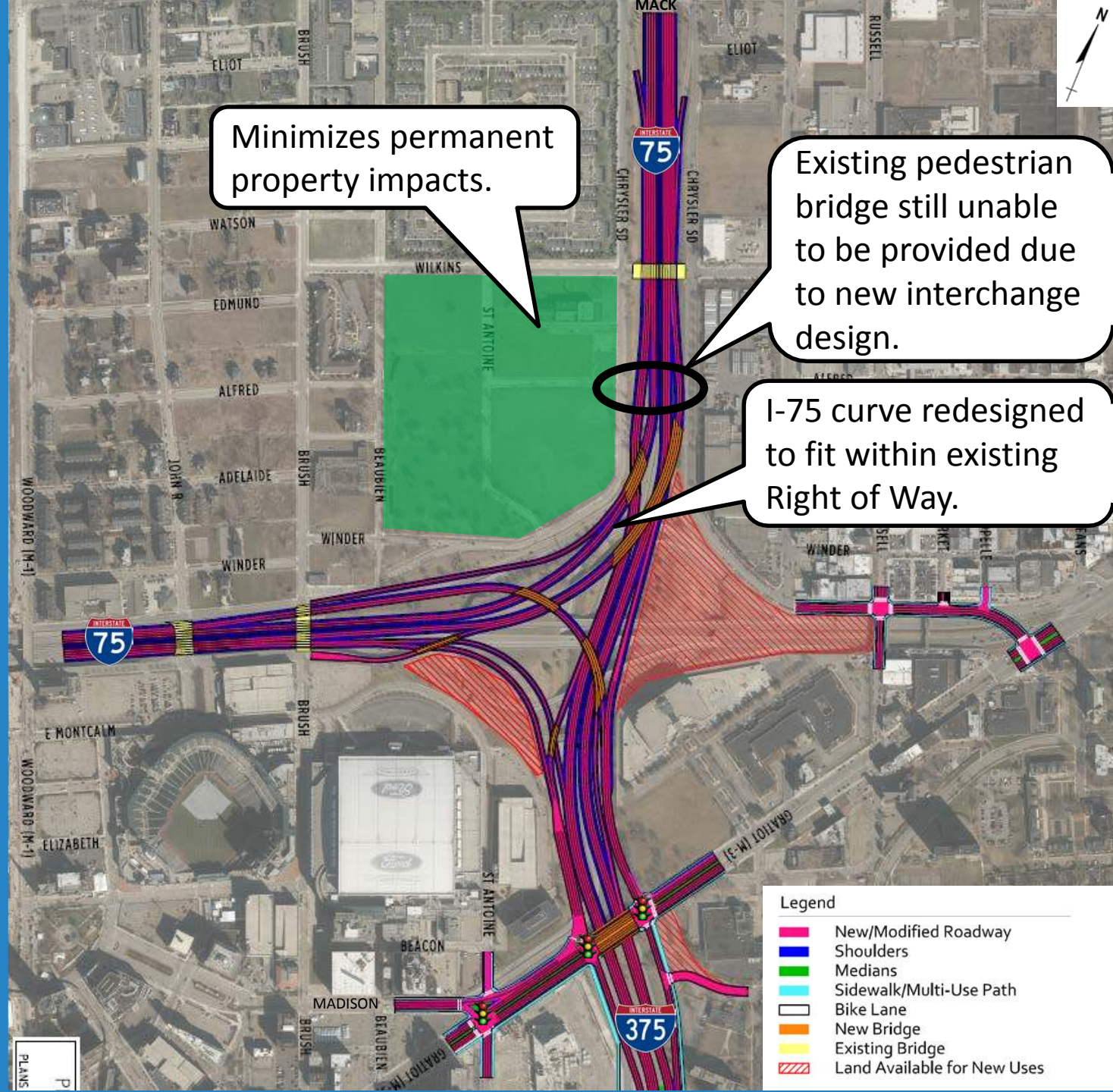
	1	2	3	4	5	6
Meets the Purpose & Need		✓	✓	✓	✓	✓
Best Serves the Needs of Non-Motorized Users			✓	✓	✓	✓
Easiest to Build and Maintain				✓	✓	
Enables Economic Development & Placemaking					✓	

Practical Alternatives

Illustrative Interchange Alternative 2

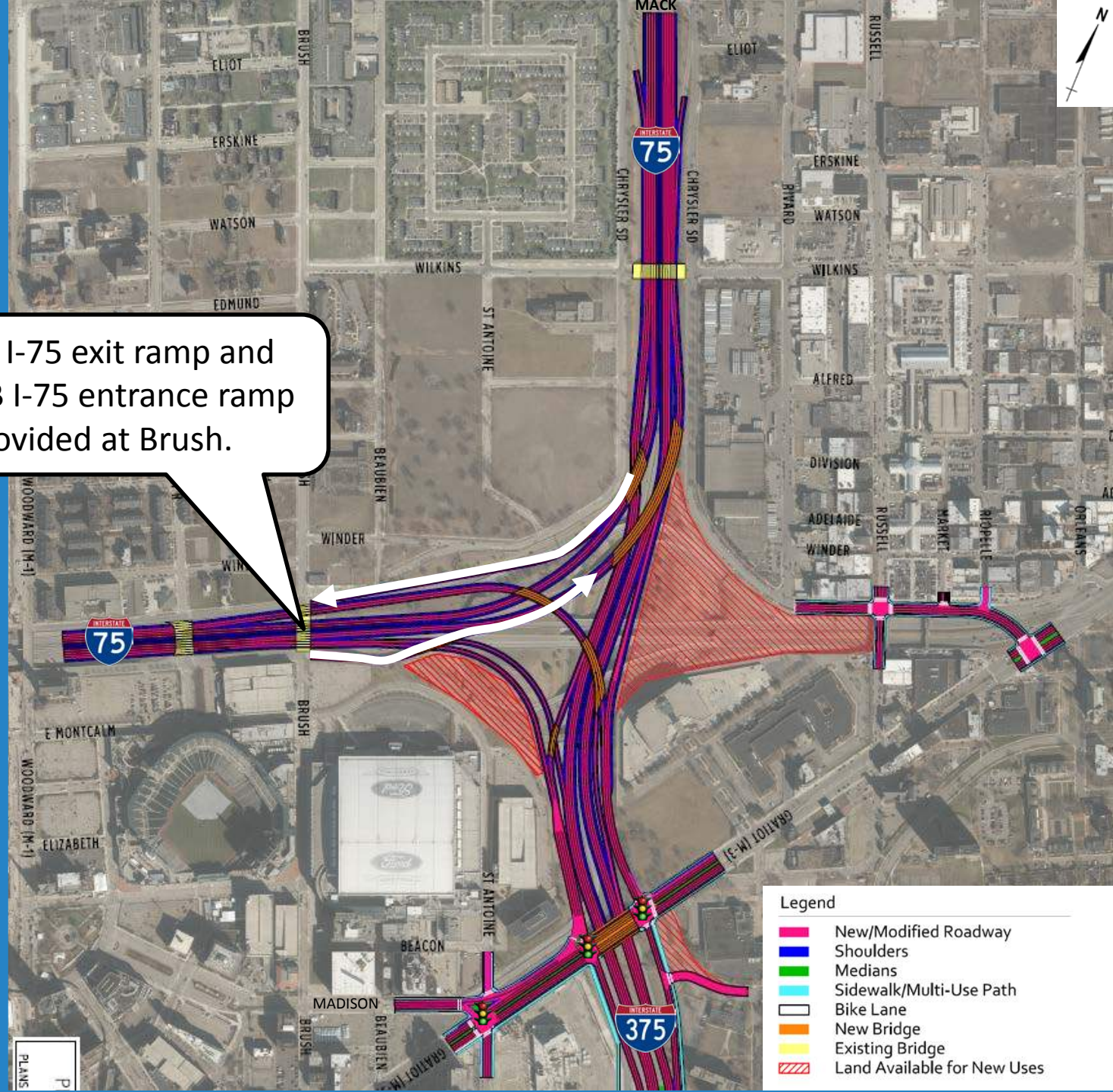


Practical Interchange Alternative

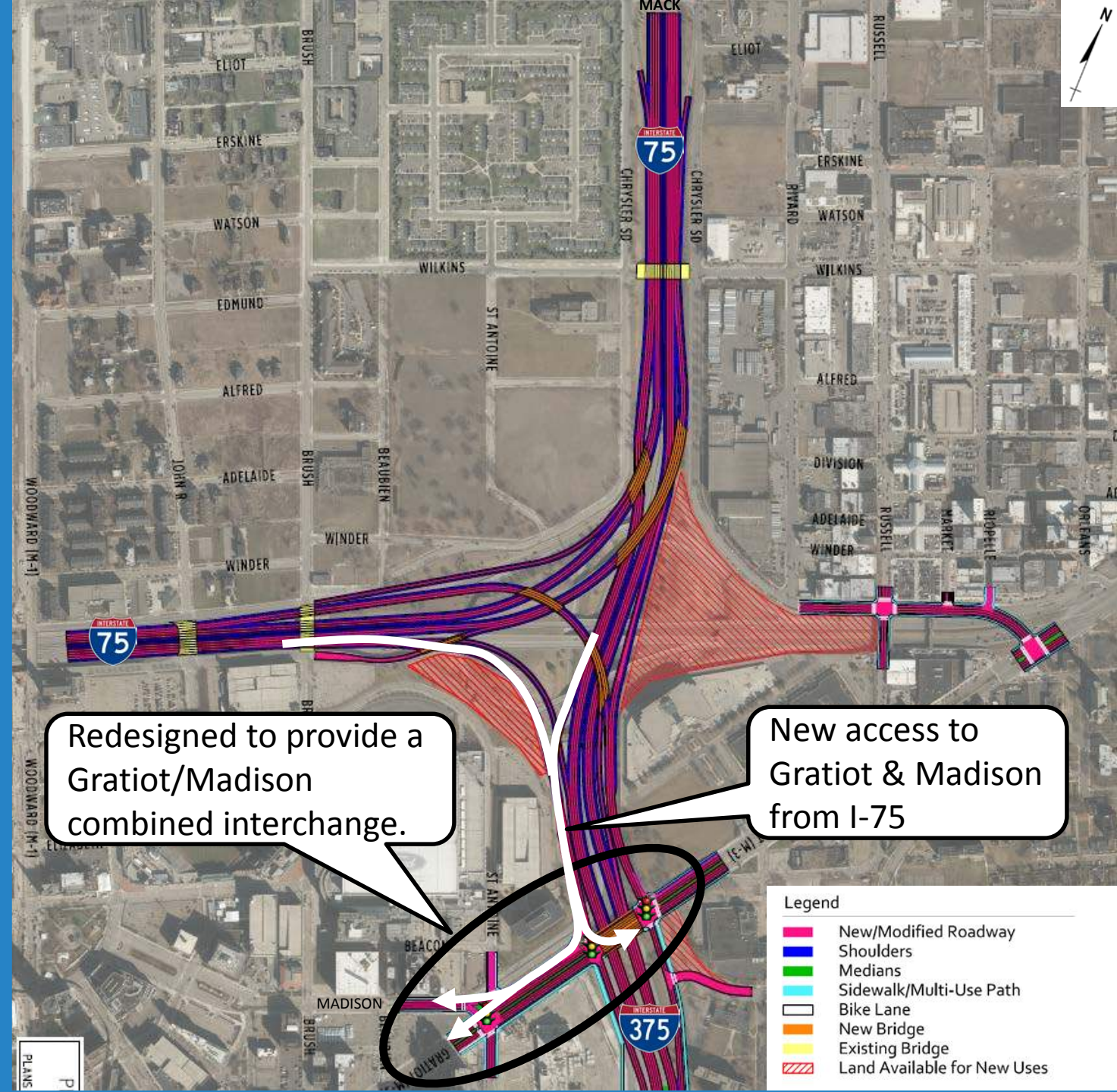


Practical Interchange Alternative

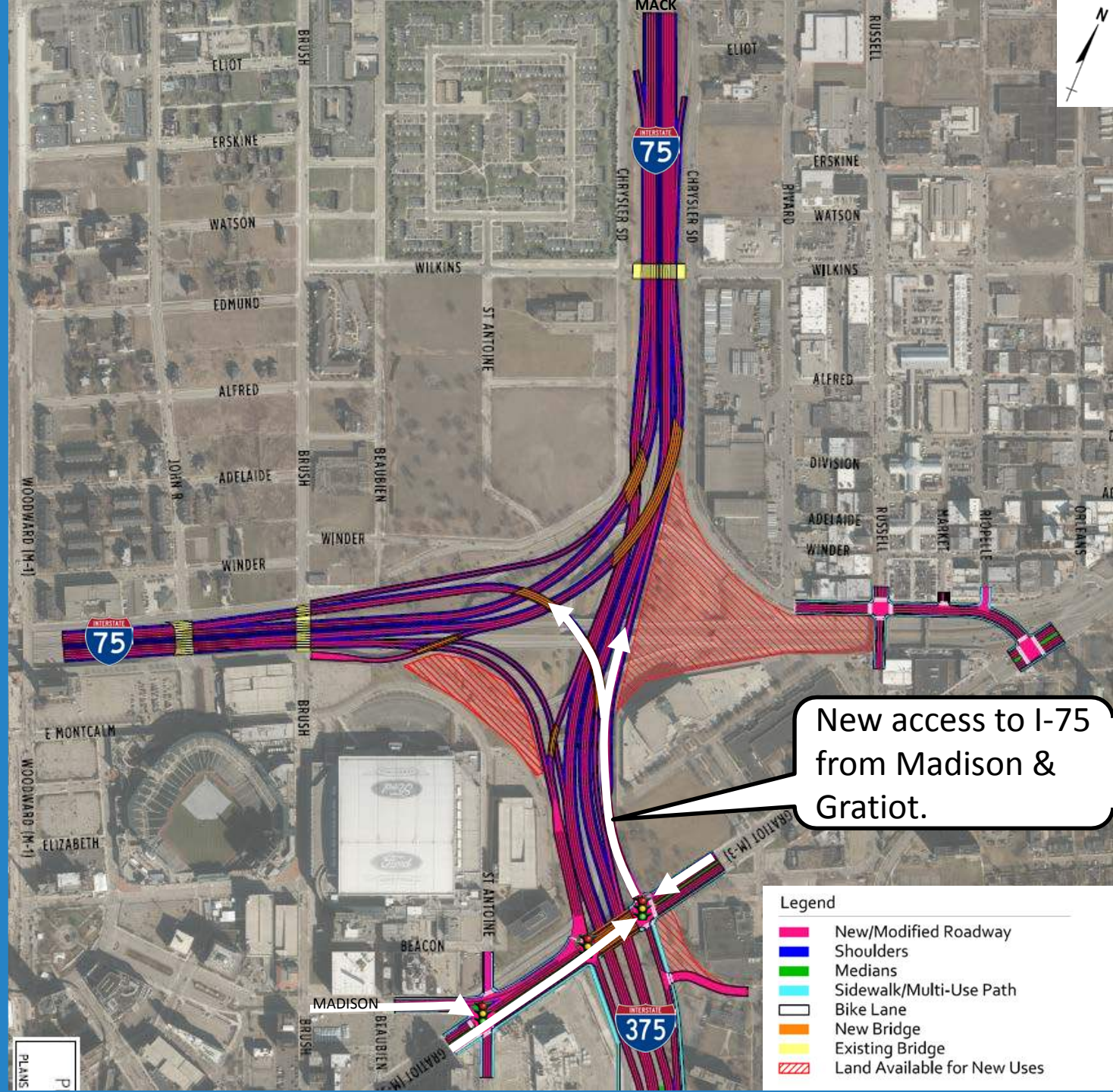
SB I-75 exit ramp and
NB I-75 entrance ramp
provided at Brush.



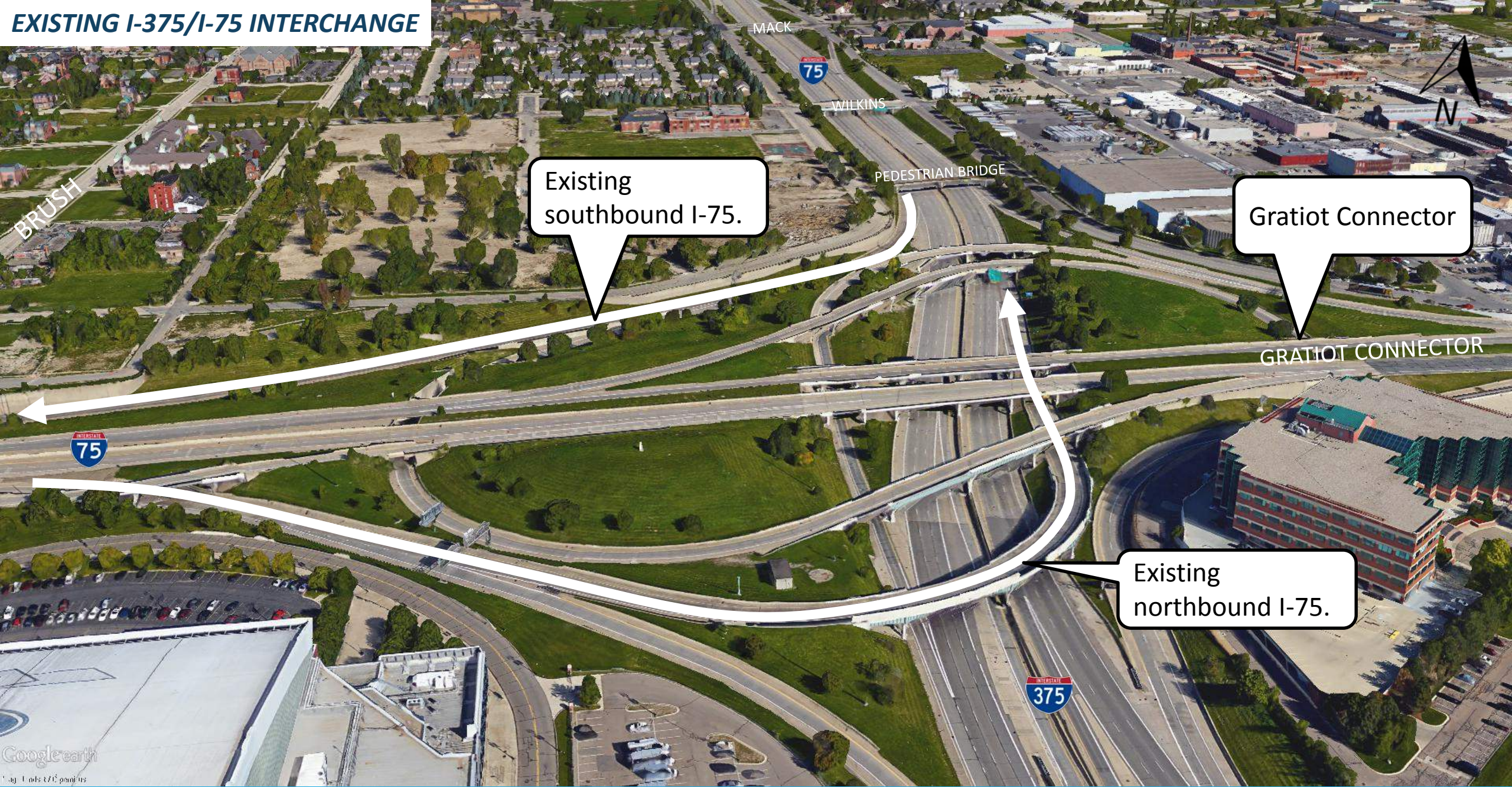
Practical Interchange Alternative



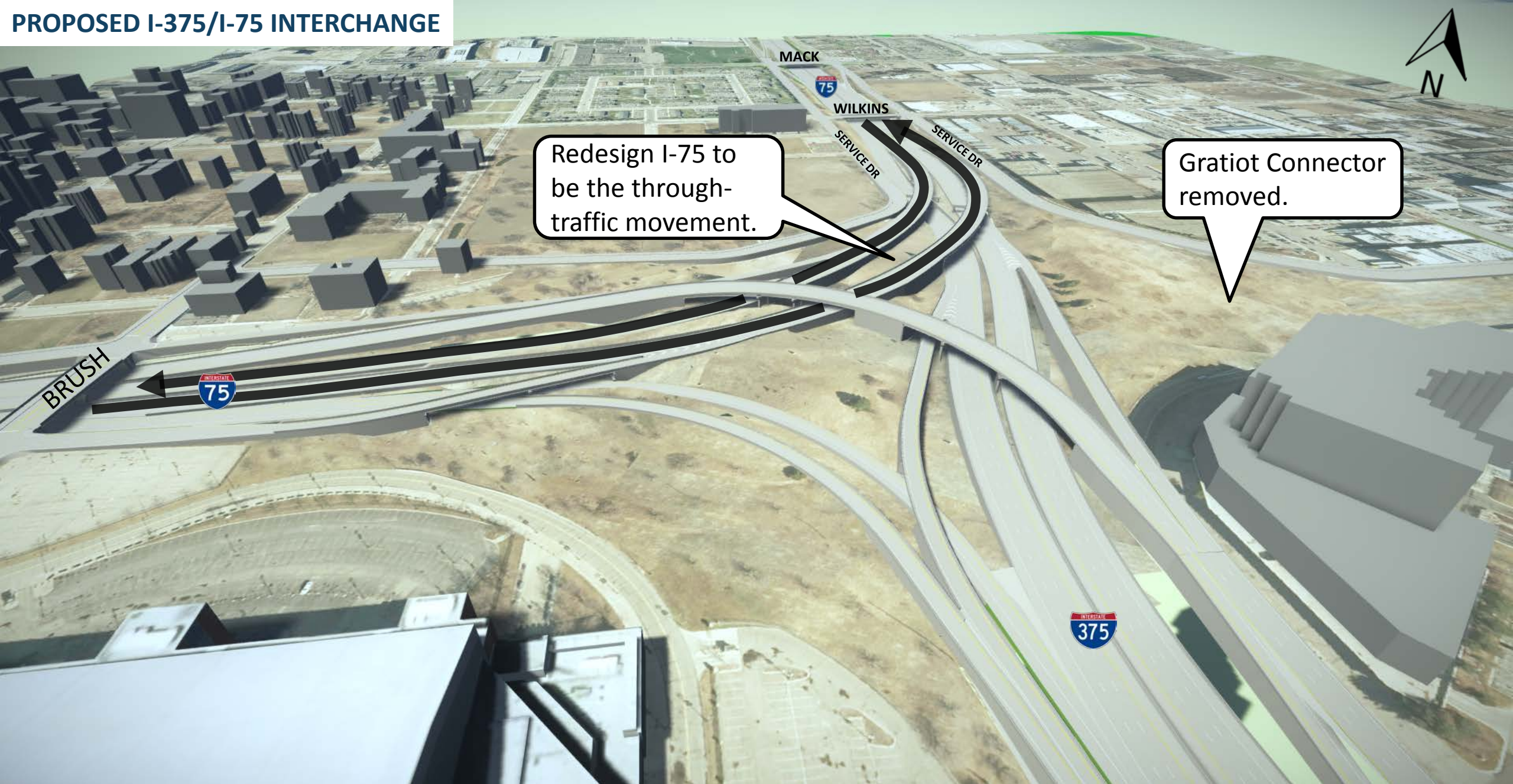
Practical Interchange Alternative



EXISTING I-375/I-75 INTERCHANGE



PROPOSED I-375/I-75 INTERCHANGE



PROPOSED I-375/I-75 INTERCHANGE



Proposed SB I-75
exit ramp to Brush.

Proposed NB I-75 entrance
ramp from Brush.

EXISTING MADISON INTERCHANGE



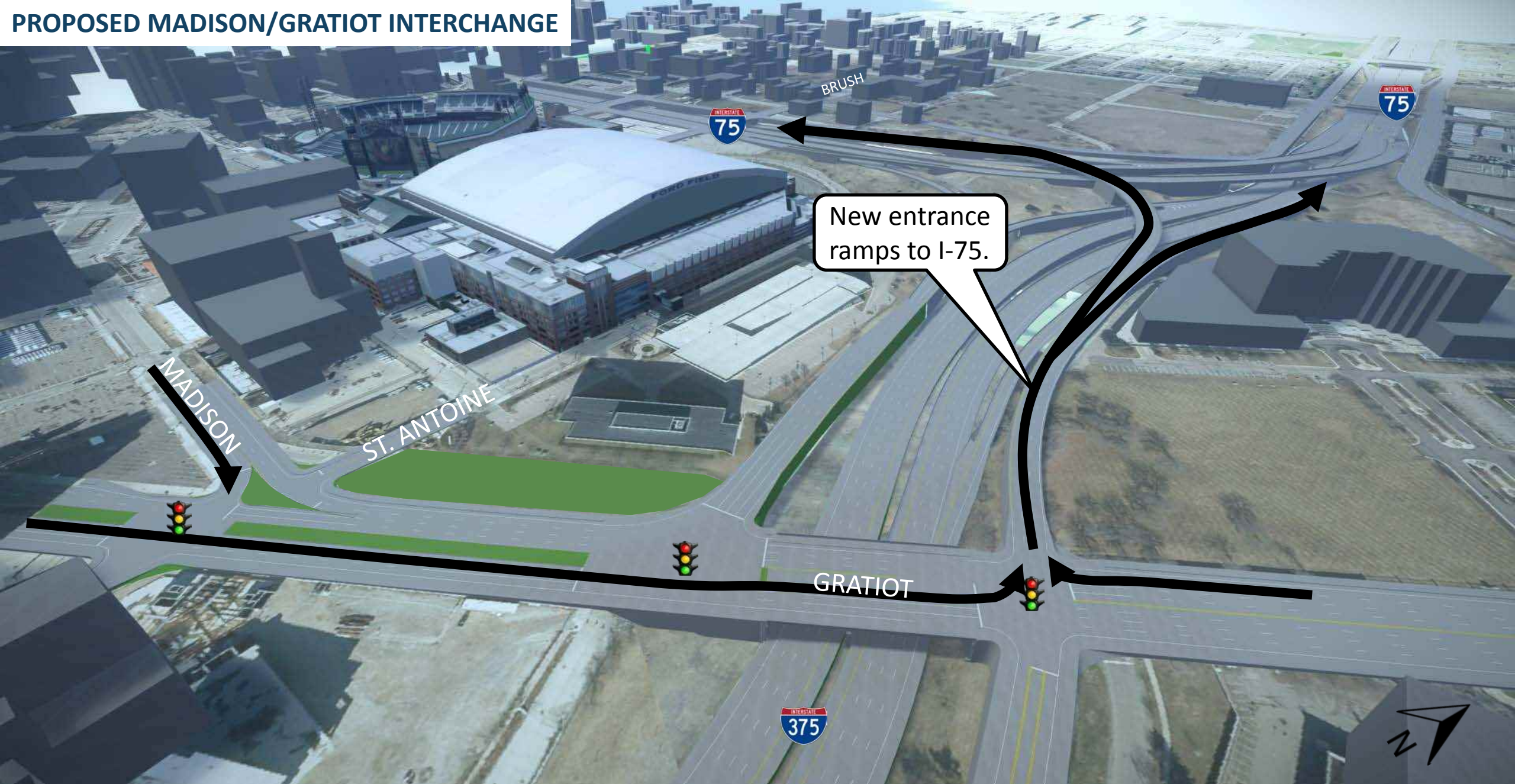
Google earth
Image Landsat / Copernicus

PROPOSED MADISON/GRATIOT INTERCHANGE

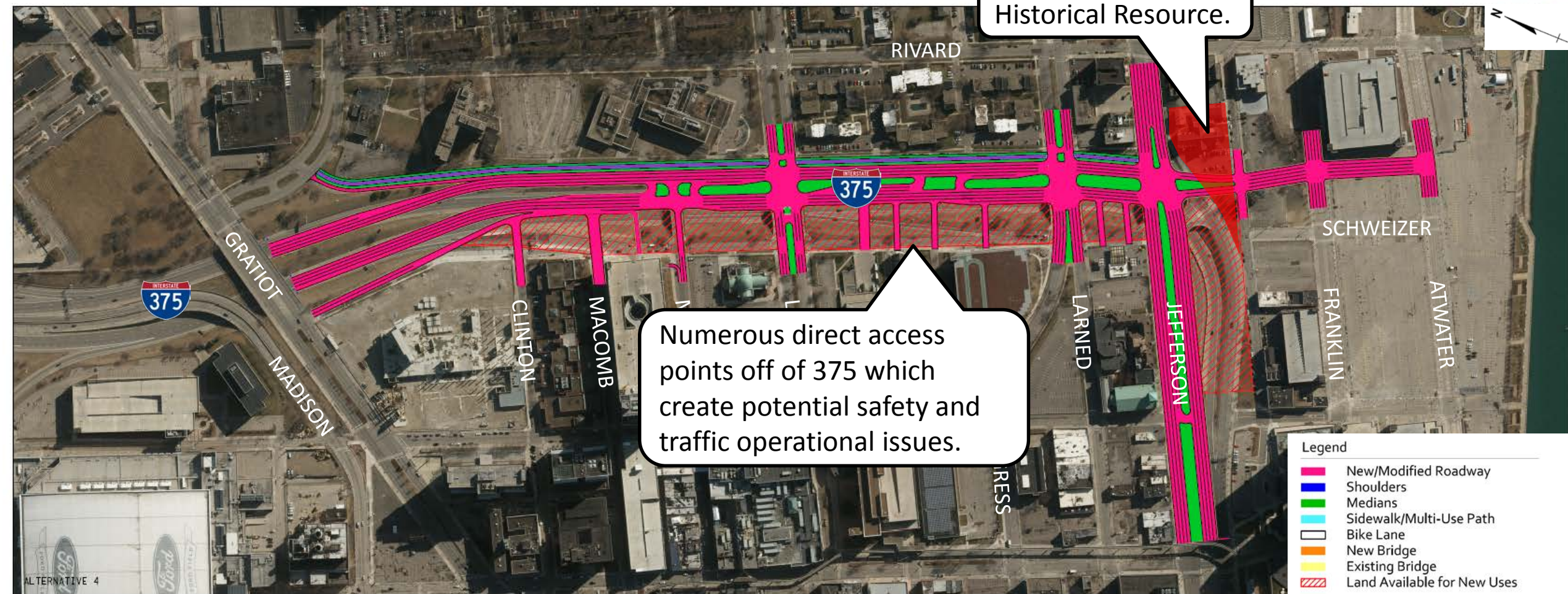


New right-hand exit ramp to Madison/Gratiot.

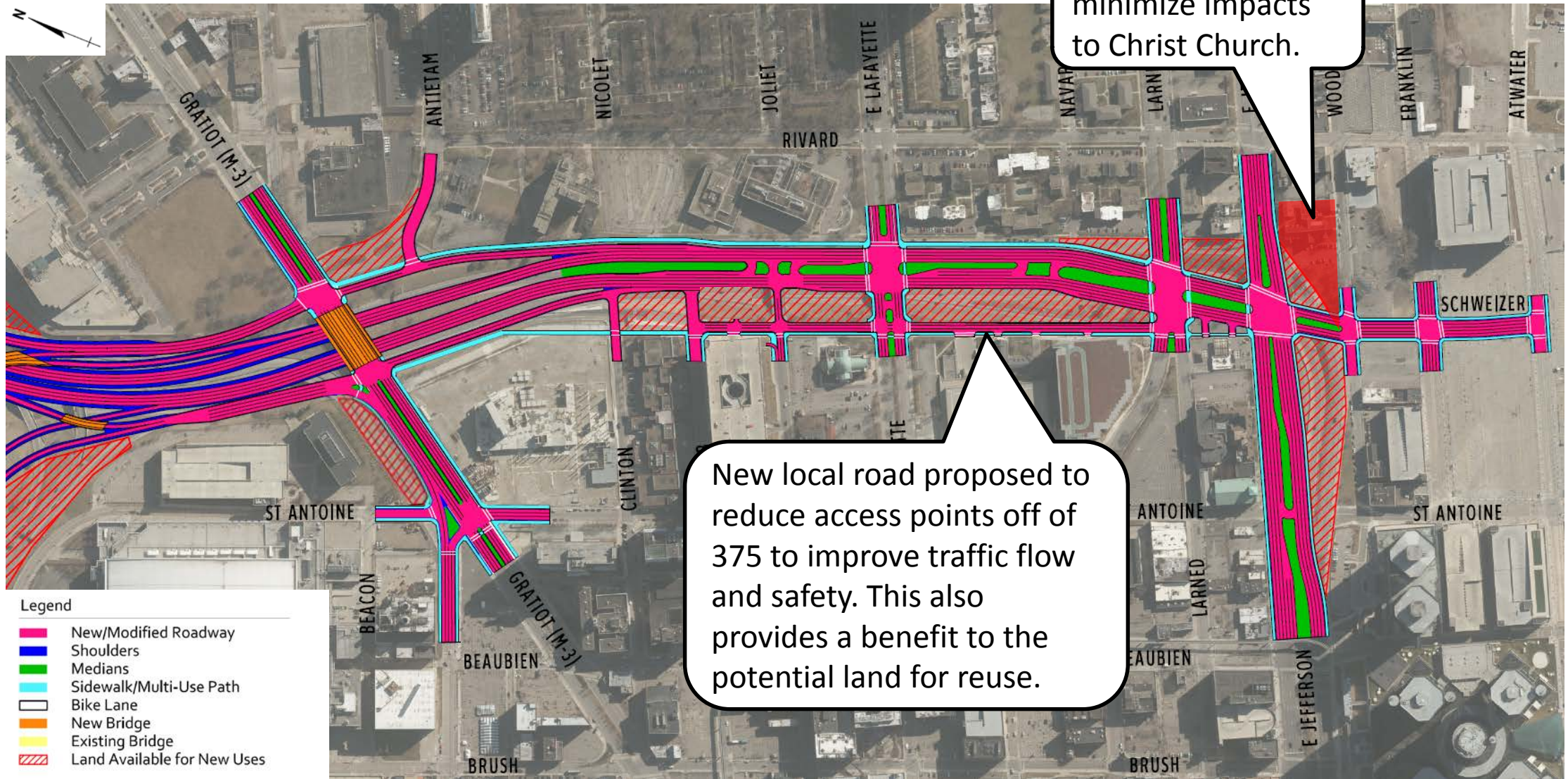
PROPOSED MADISON/GRATIOT INTERCHANGE

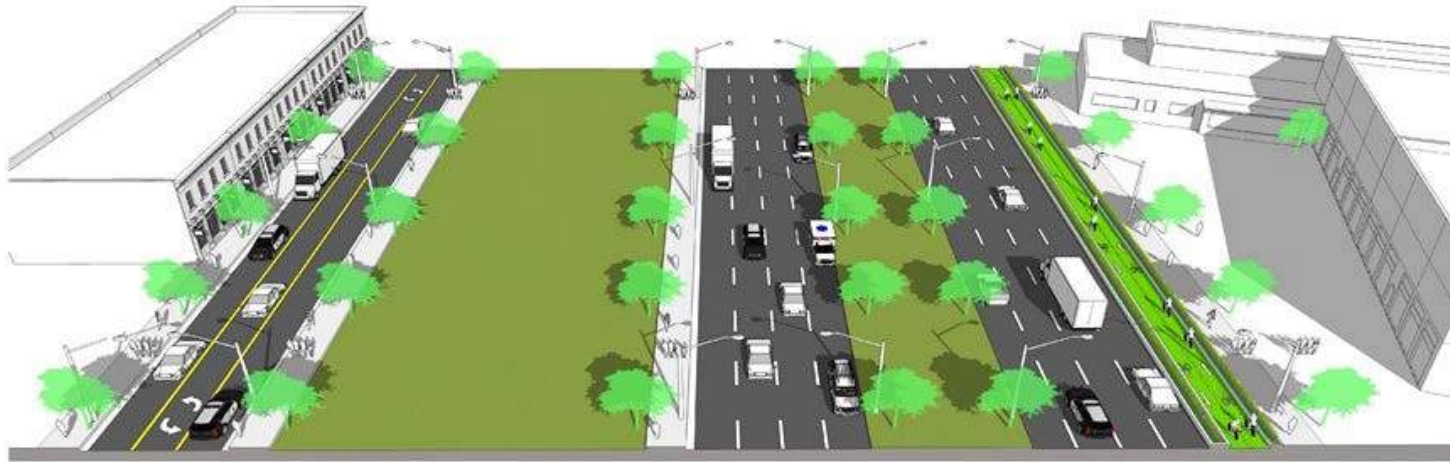


Illustrative Alternative 4



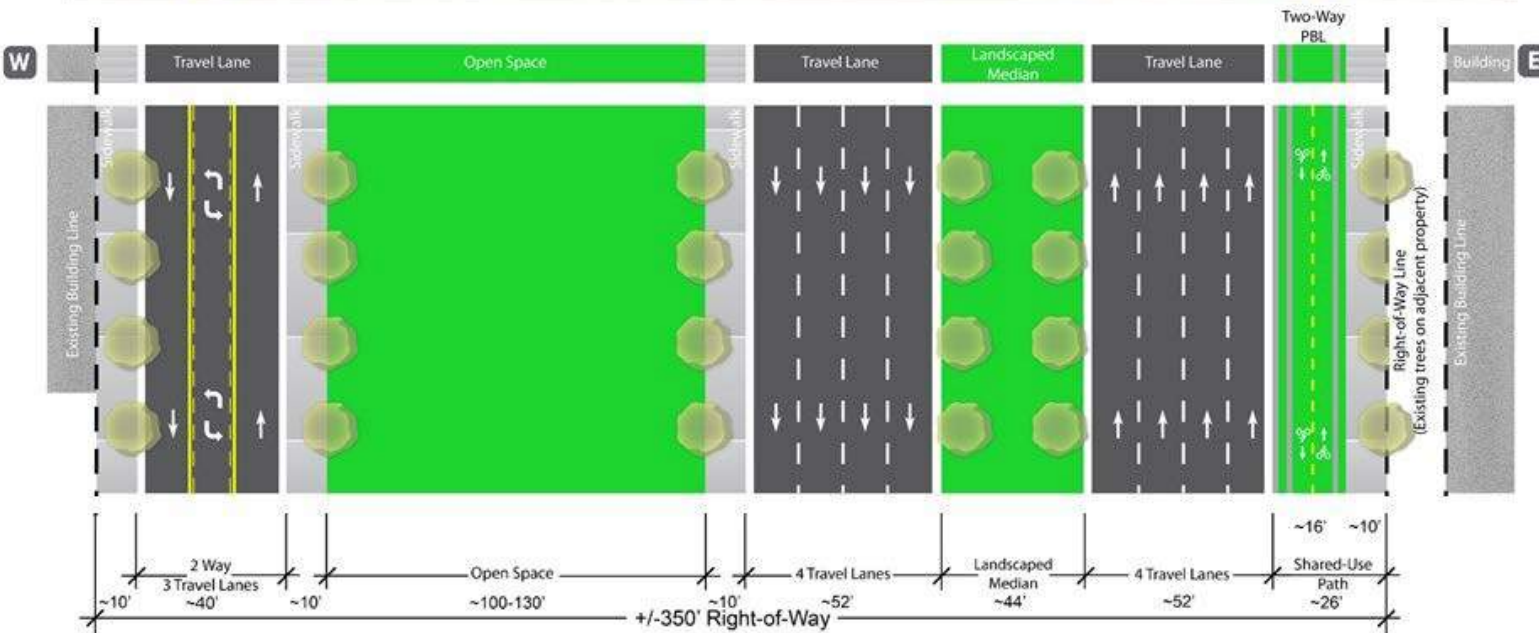
Practical Alternative 4





Practical Alternative 4

CROSS SECTION VIEW

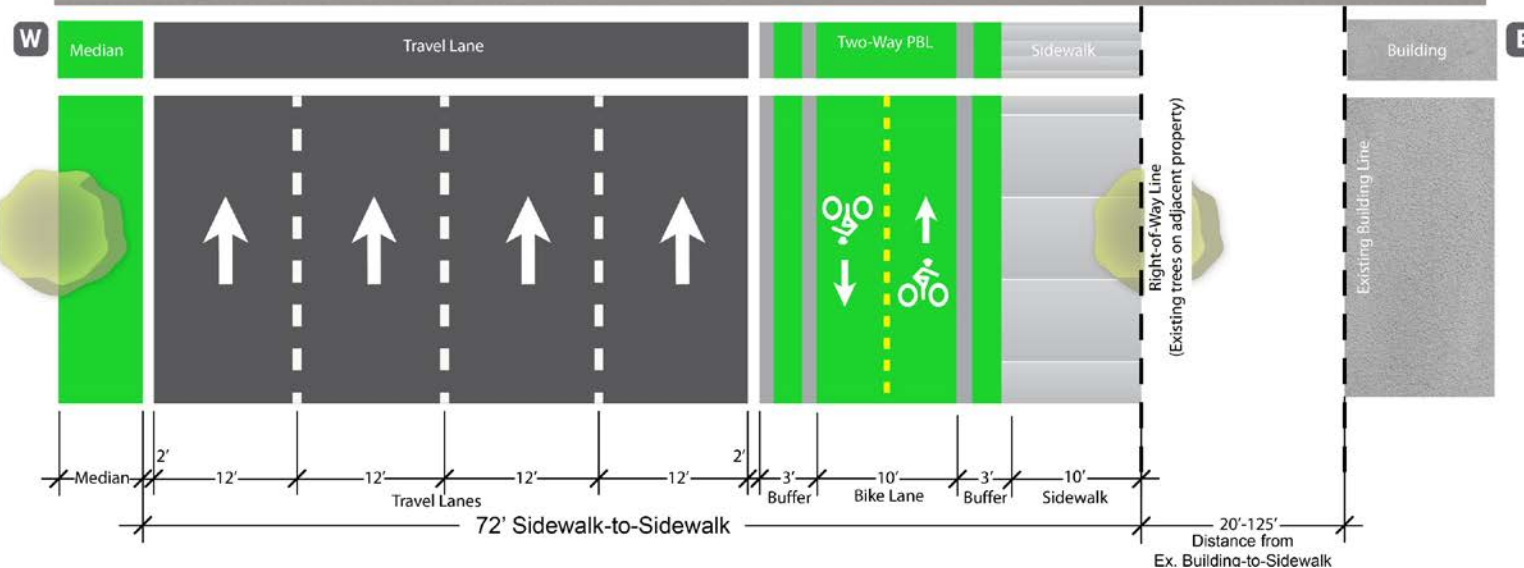


LOOKING NORTH



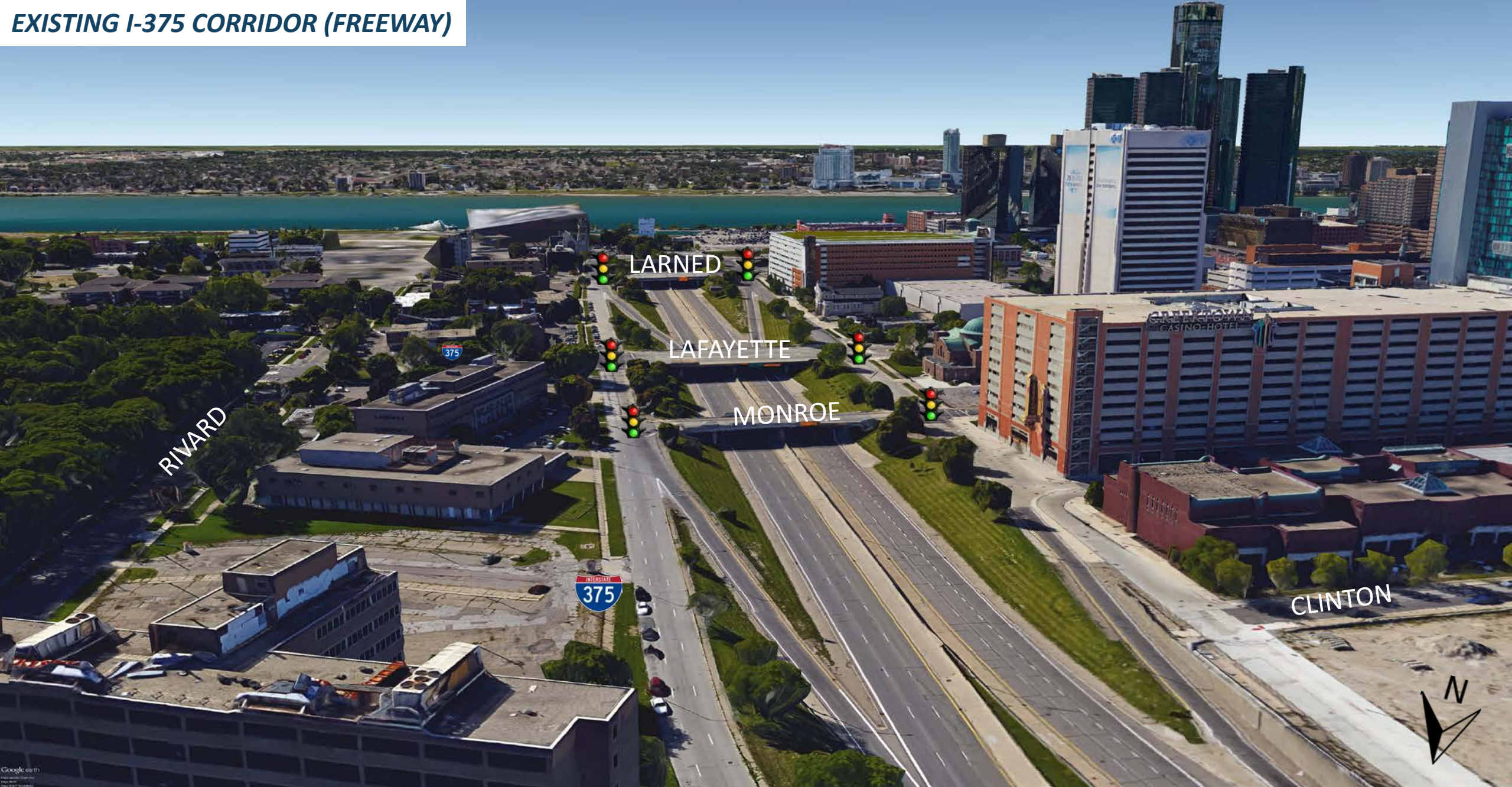
Practical Alternative 4

CROSS SECTION VIEW



LOOKING NORTH

EXISTING I-375 CORRIDOR (FREEWAY)



PROPOSED I-375 CORRIDOR PRACTICAL ALTERNATIVE 4



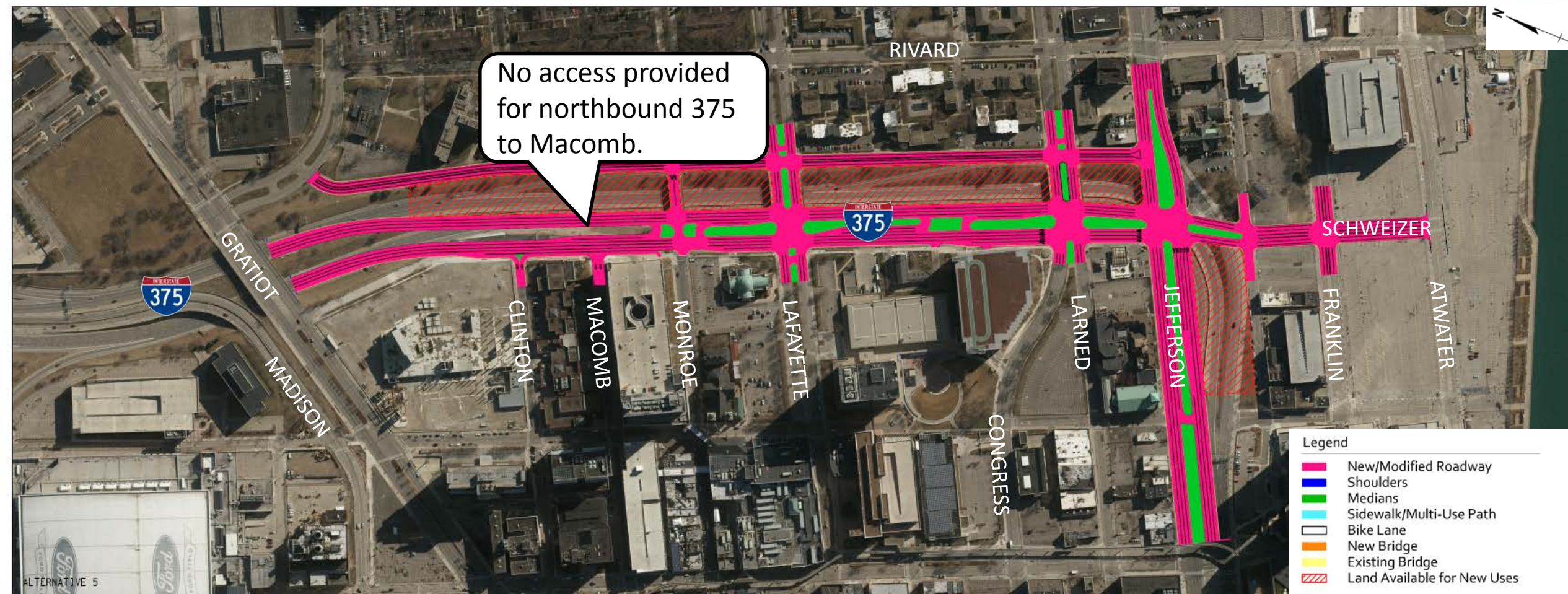
EXISTING I-375/JEFFERSON (FREEWAY)



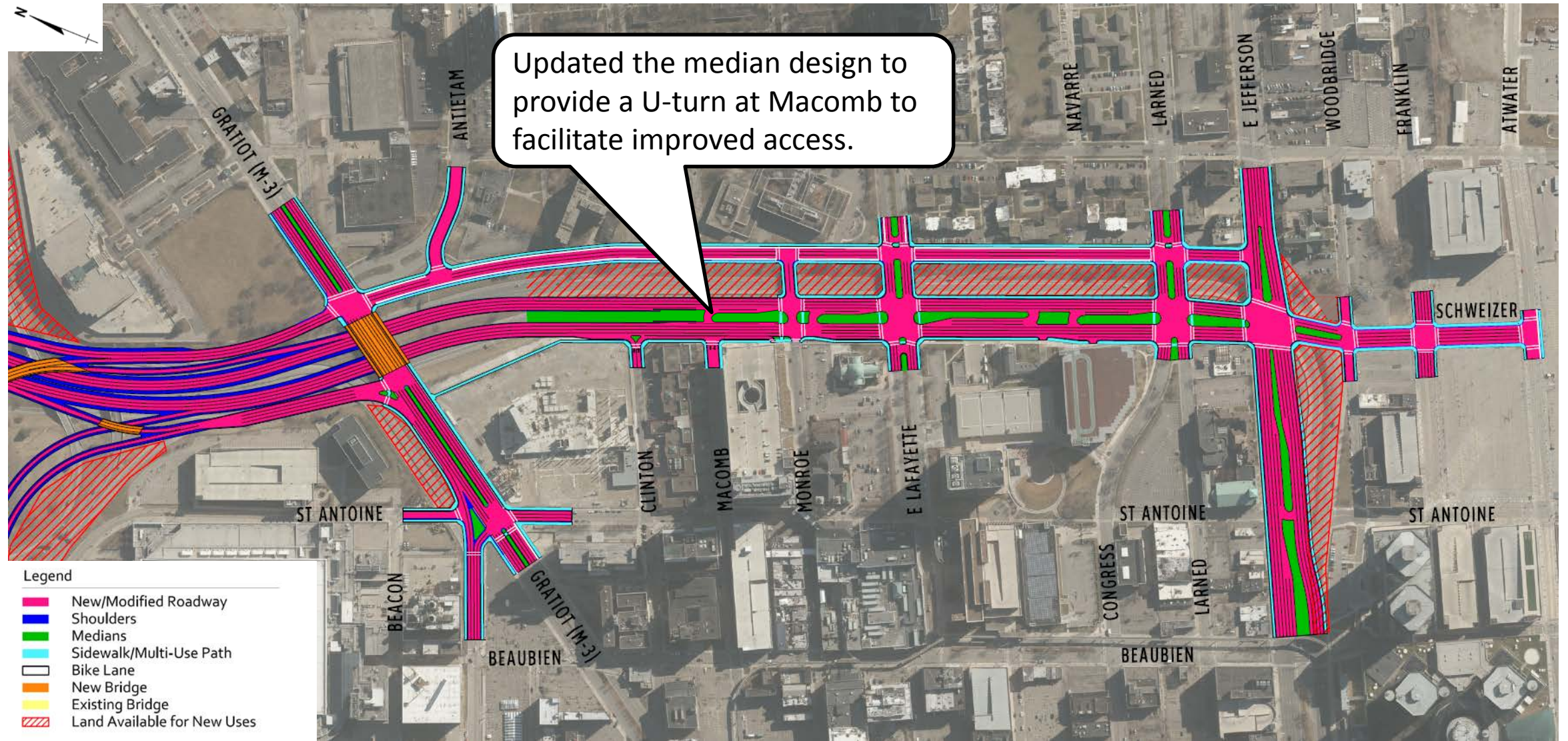
PROPOSED I-375/JEFFERSON (PRACTICAL ALTERNATIVE 4)

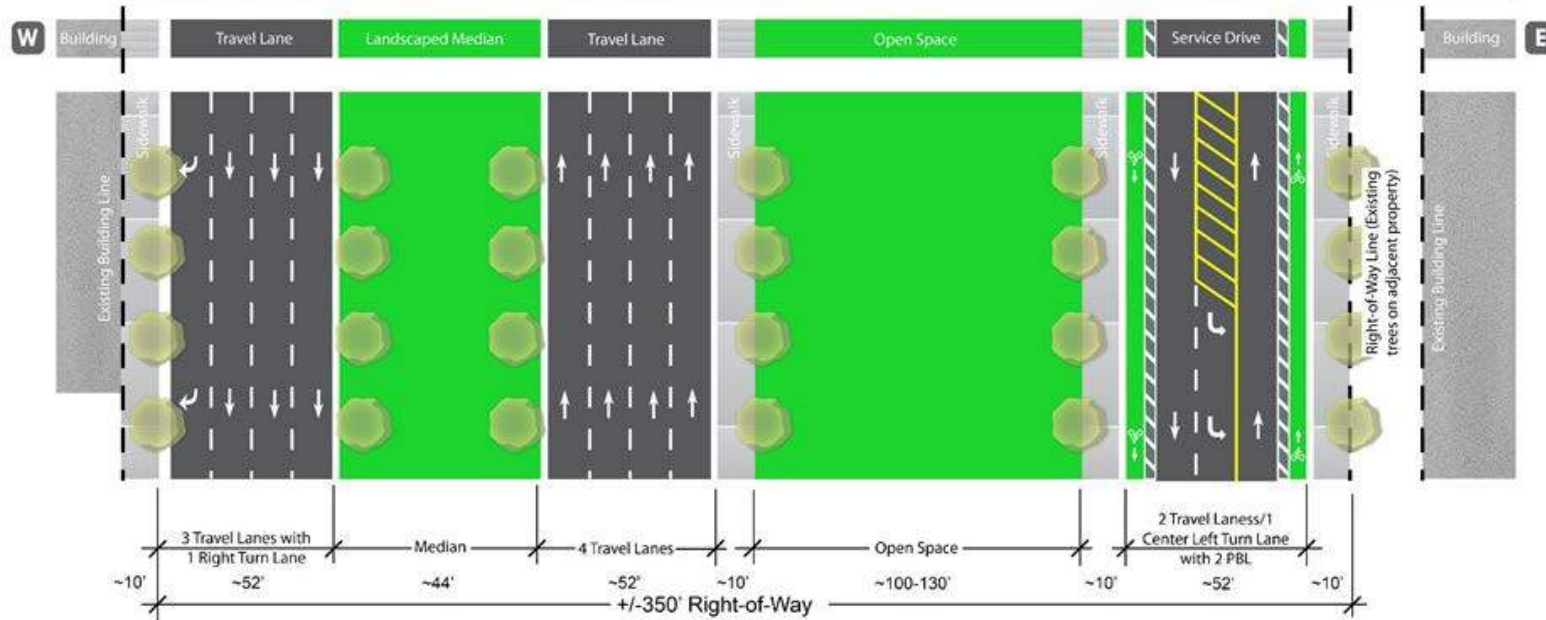
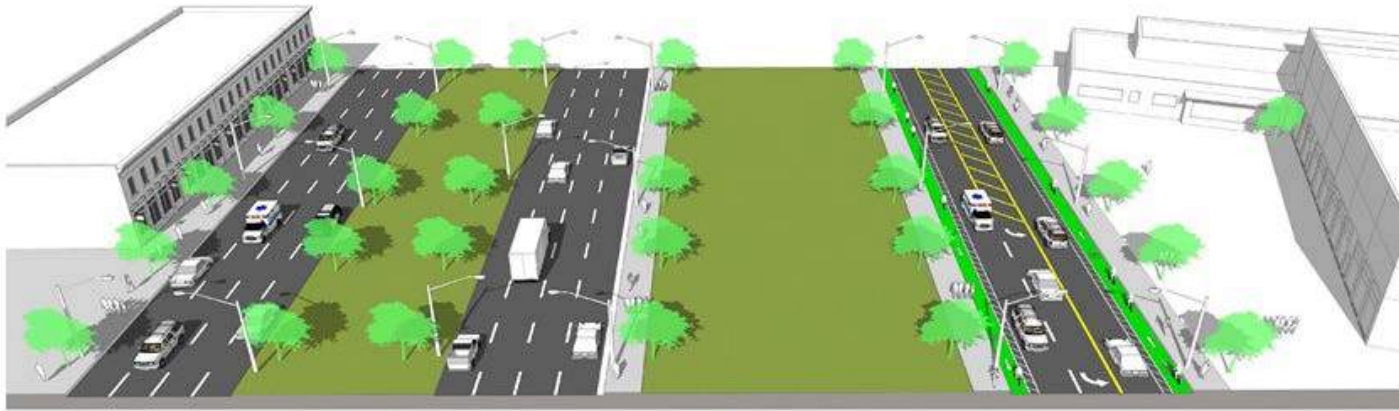


Illustrative Alternative 5



Practical Alternative 5





LOOKING NORTH

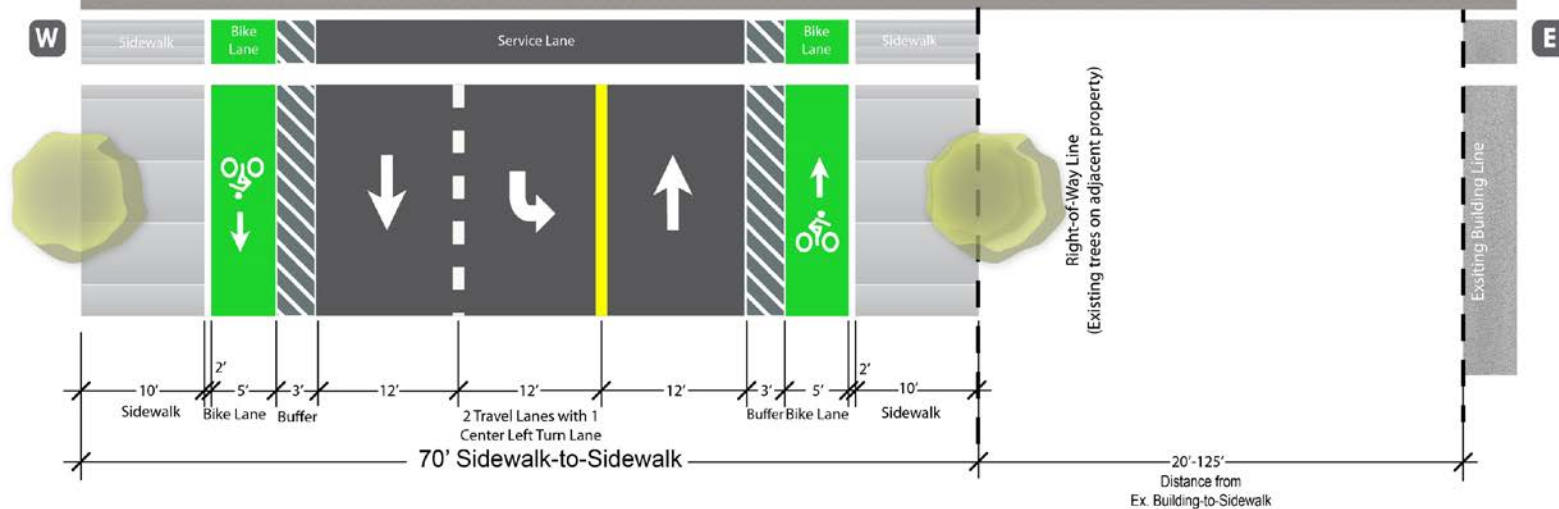
Practical Alternative 5

CROSS SECTION VIEW



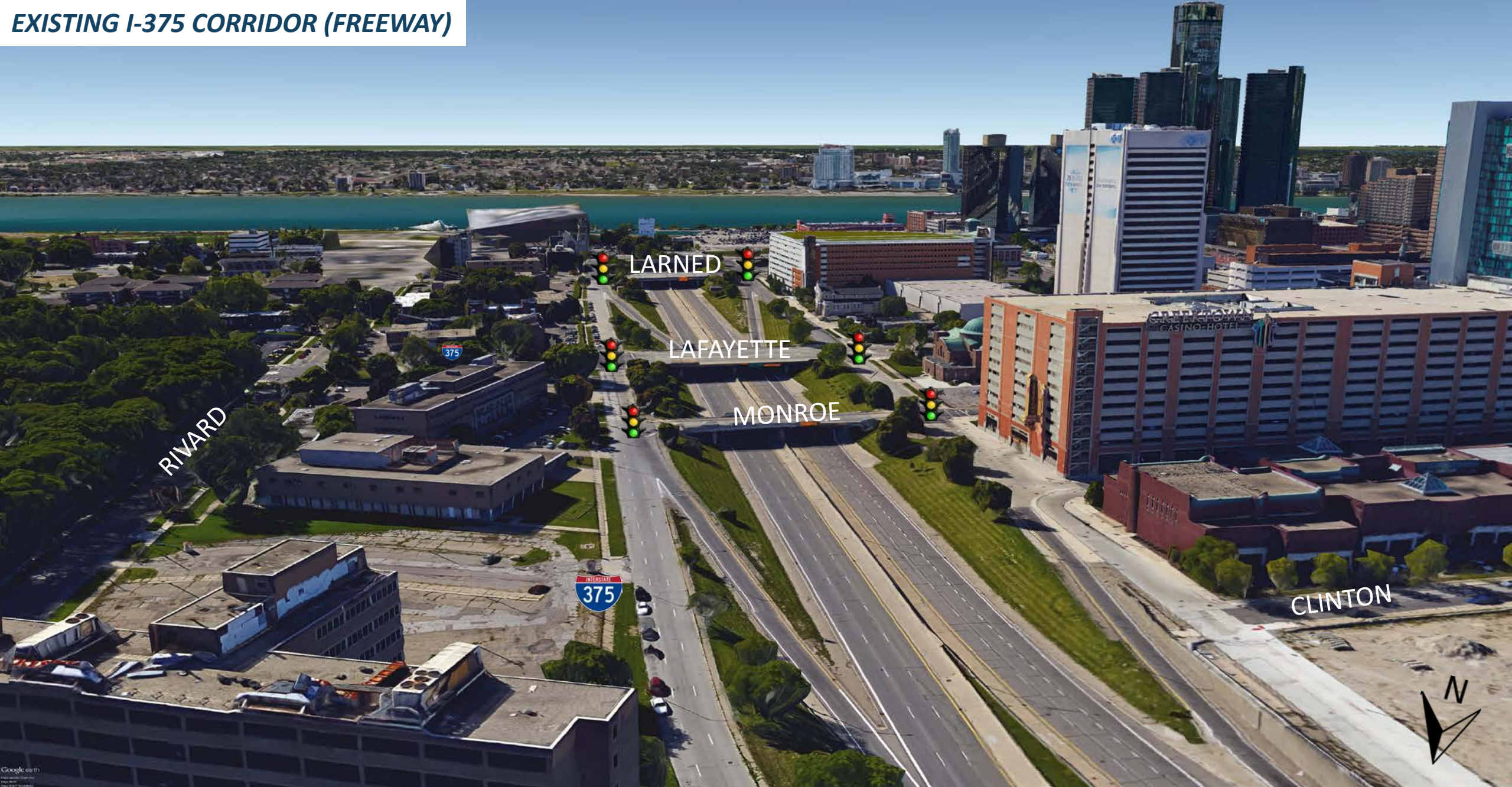
Practical Alternative 5

CROSS SECTION VIEW



LOOKING NORTH

EXISTING I-375 CORRIDOR (FREEWAY)



Google earth

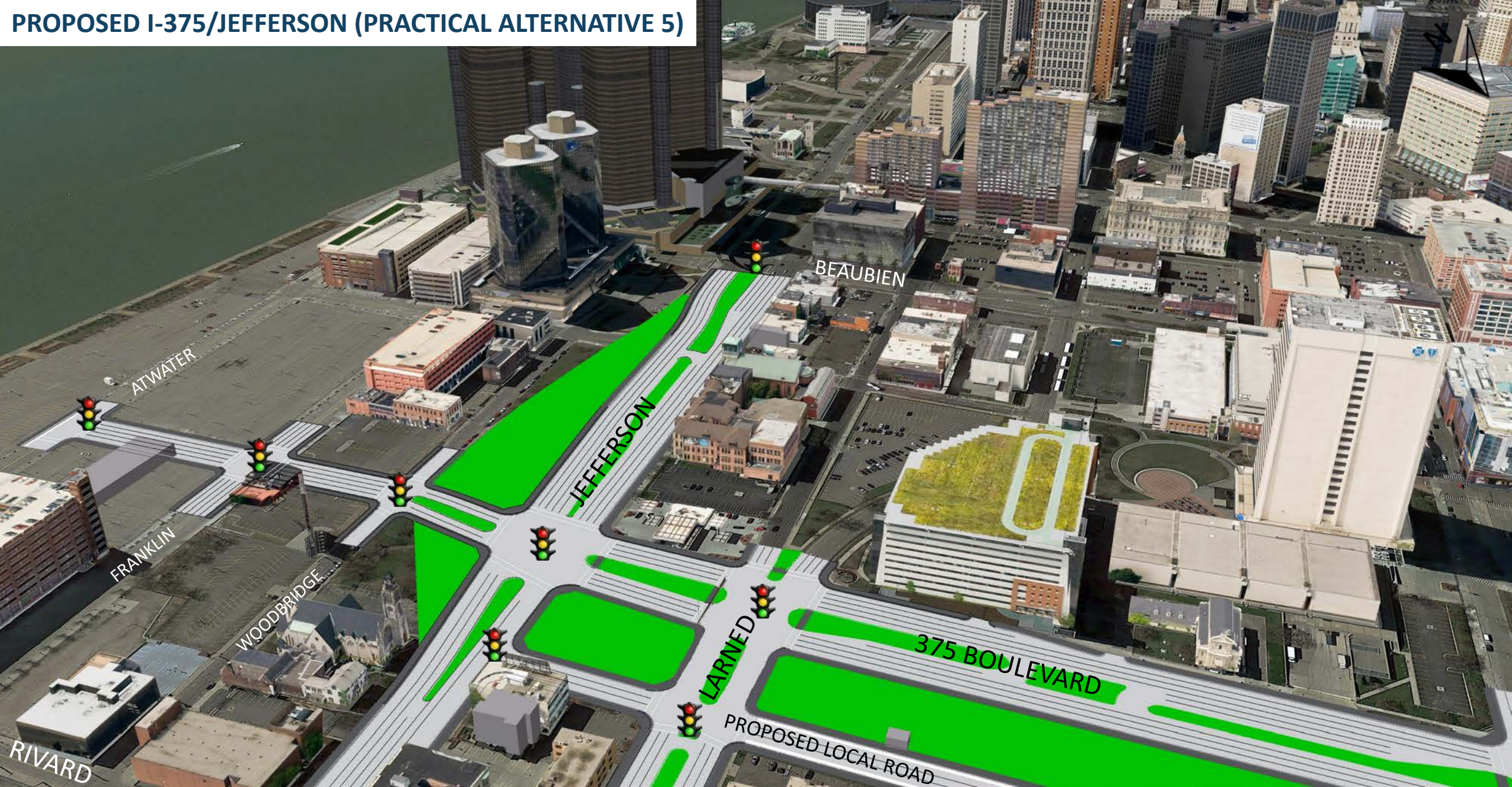
PROPOSED I-375 CORRIDOR PRACTICAL ALTERNATIVE 5



EXISTING I-375/JEFFERSON (FREEWAY)



PROPOSED I-375/JEFFERSON (PRACTICAL ALTERNATIVE 5)

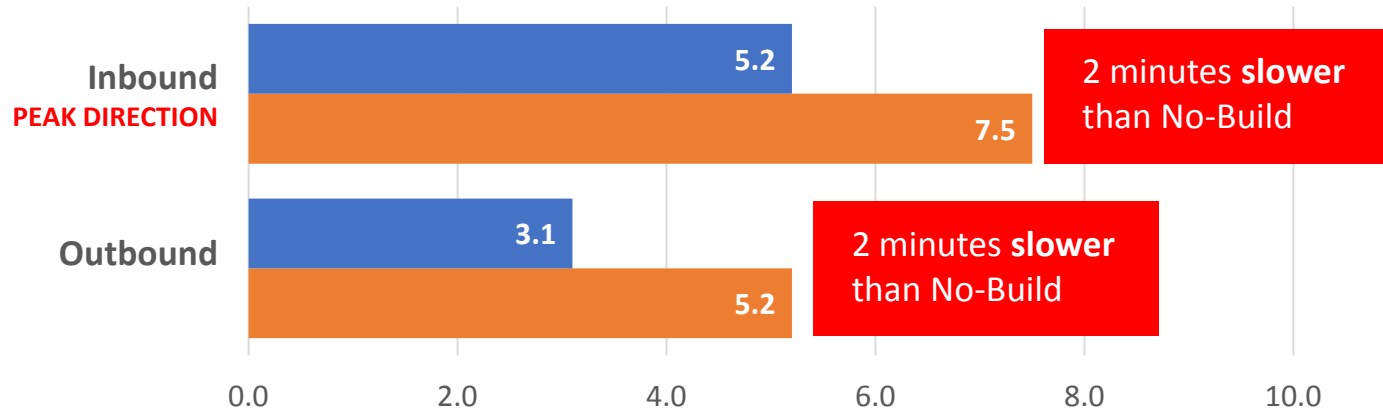


Traffic Operations

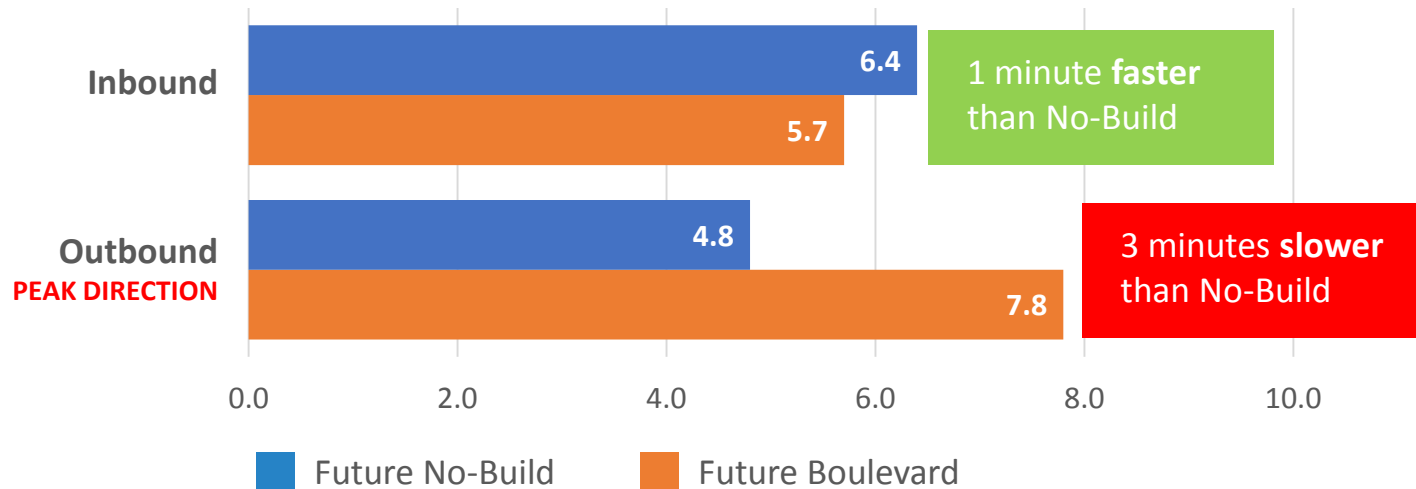
I-375 to/from Chrysler Freeway

Travel Times

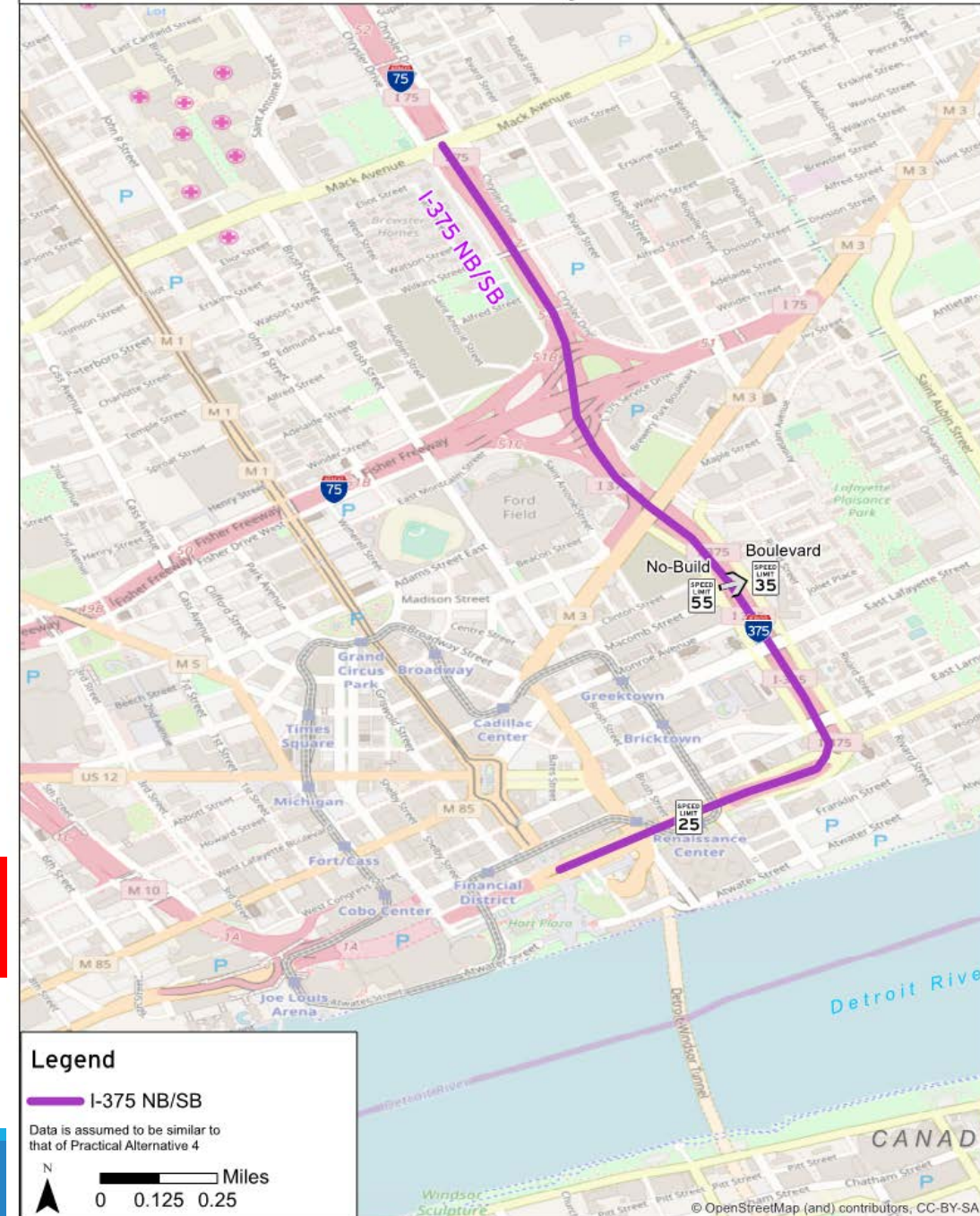
Morning Travel Times (minutes)



Afternoon Travel Times (minutes)



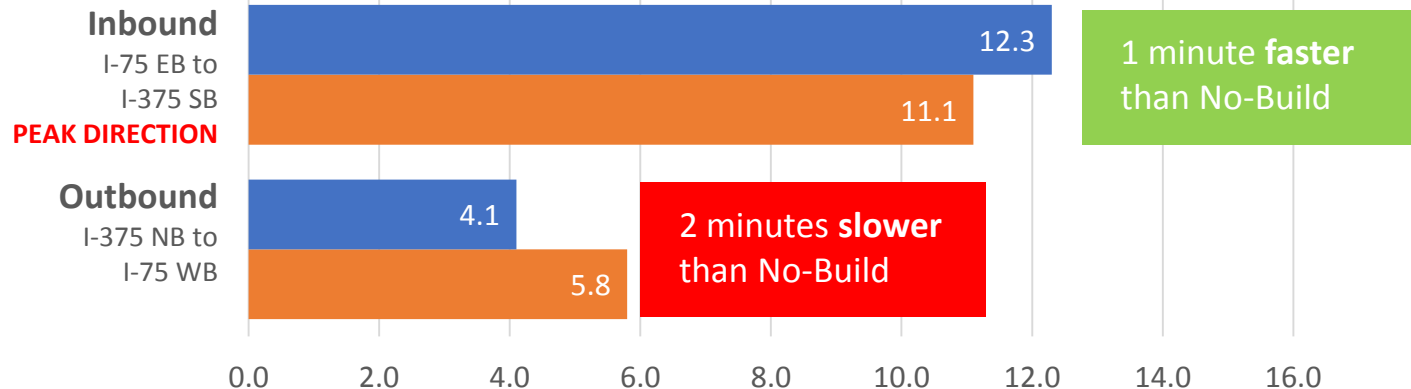
Travel Time Segments



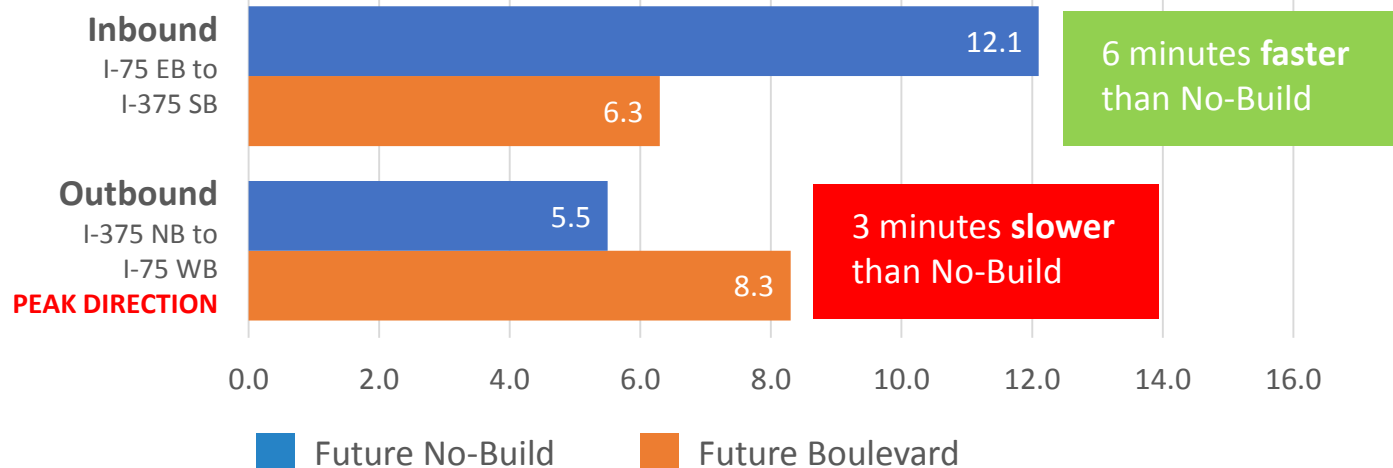
I-375 to/from Fischer Freeway

Travel Times

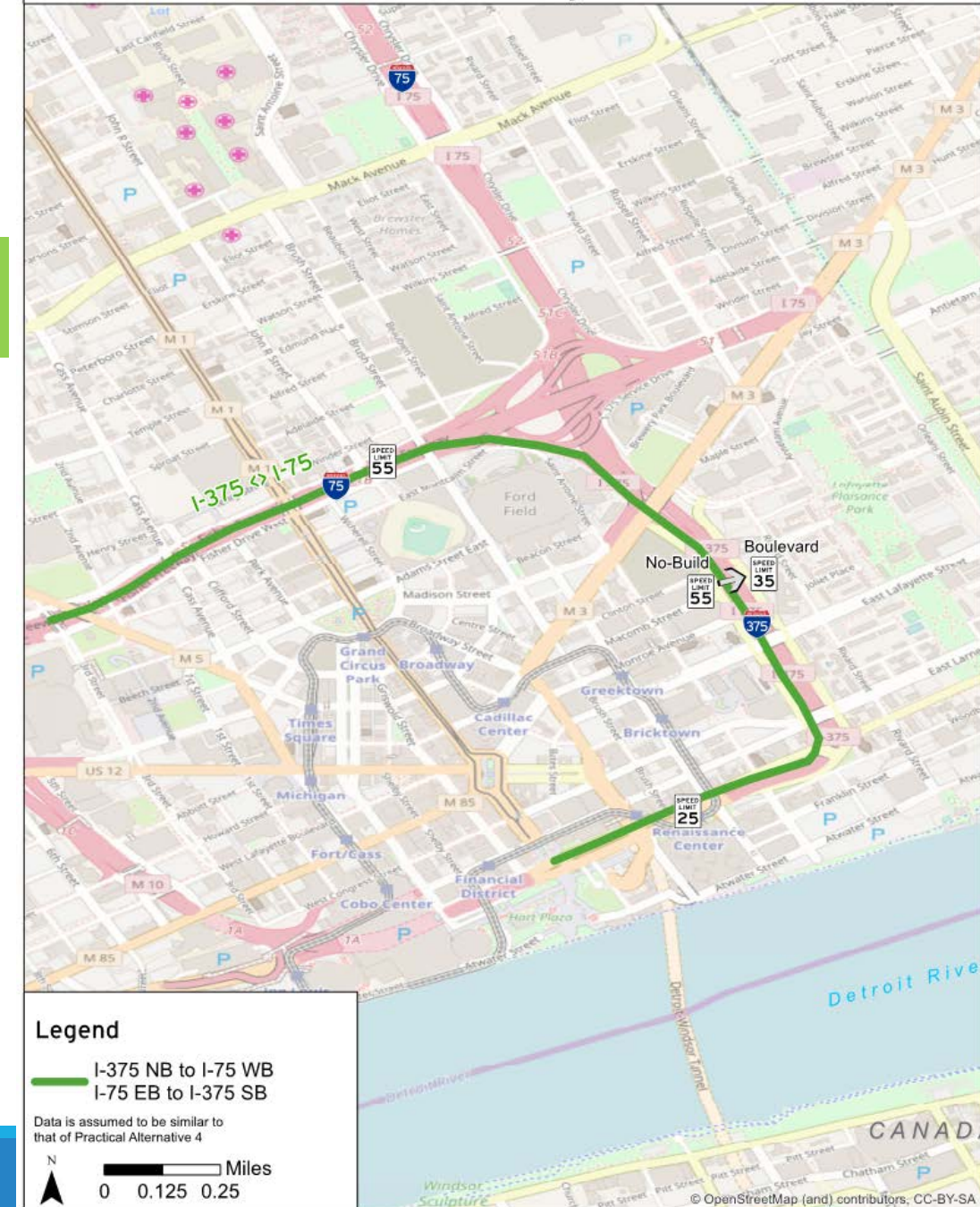
Morning Travel Times (minutes)



Afternoon Travel Times (minutes)



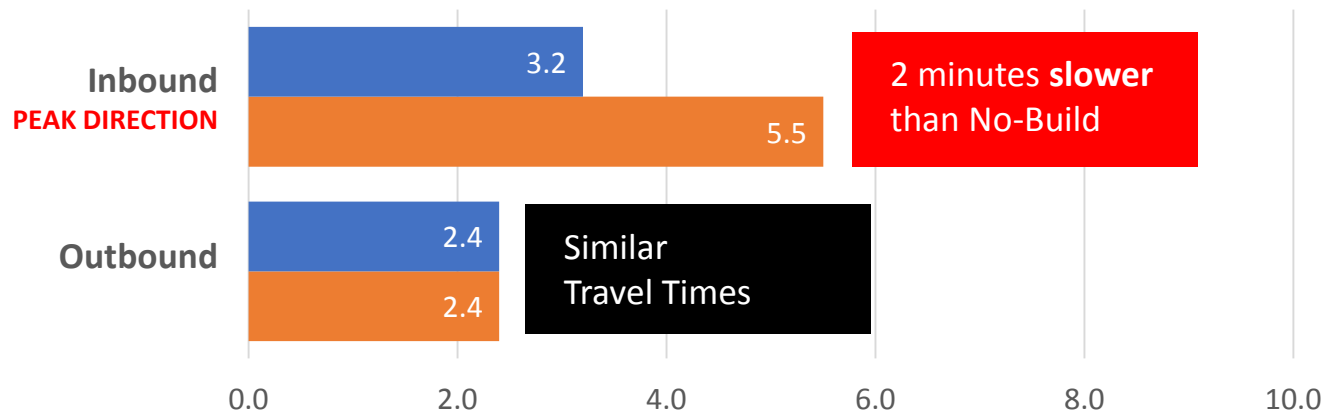
Travel Time Segments



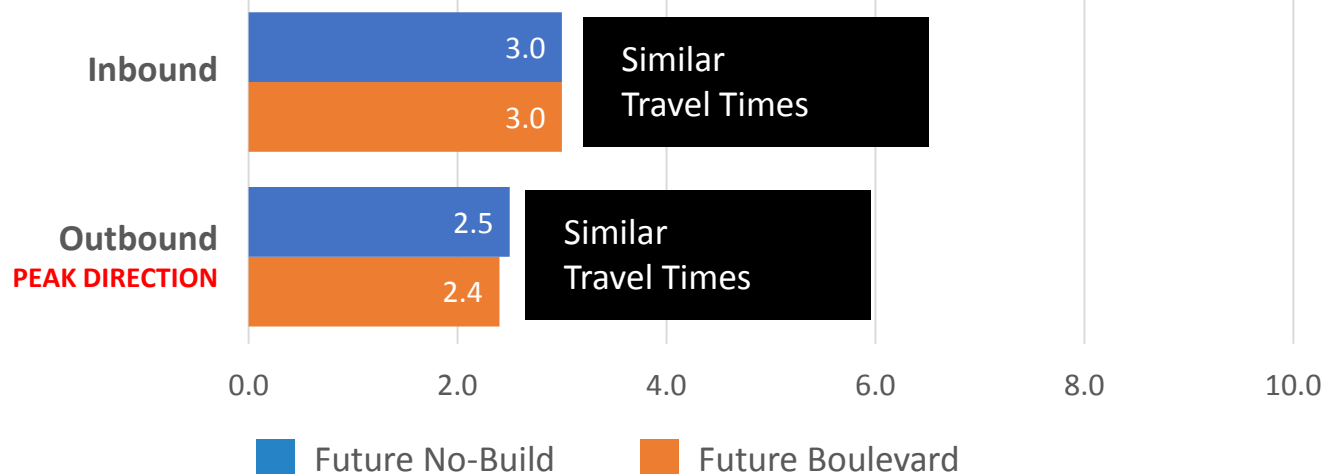
Gratiot

Travel Times

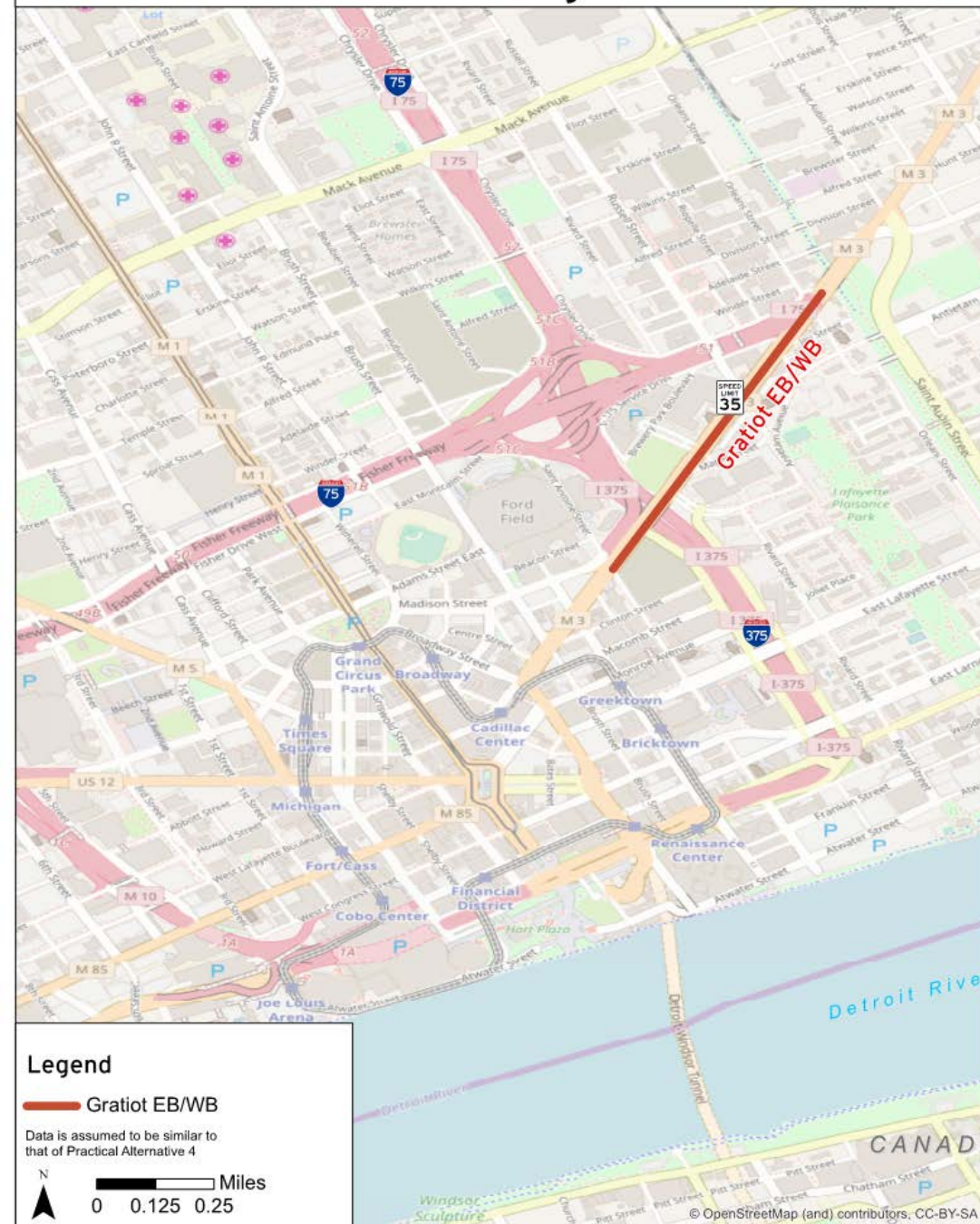
Morning Travel Times (minutes)



Afternoon Travel Times (minutes)



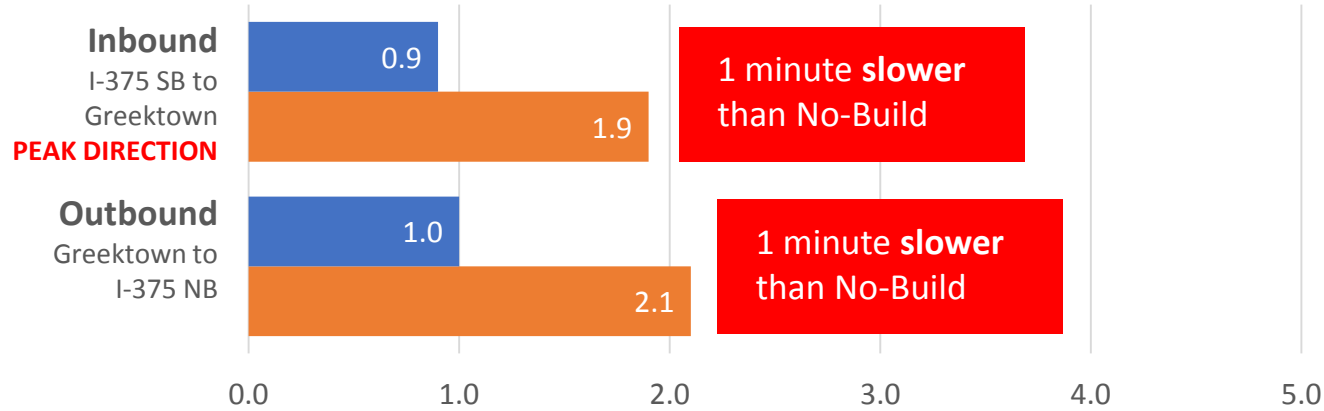
Travel Time Segments



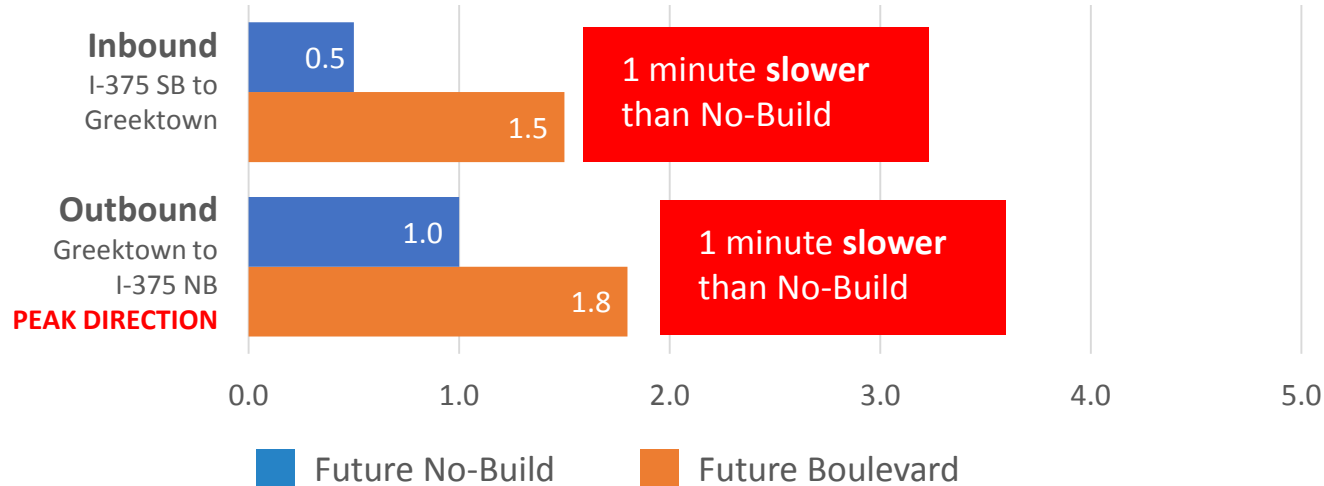
Greektown to/from I-375

Travel Times

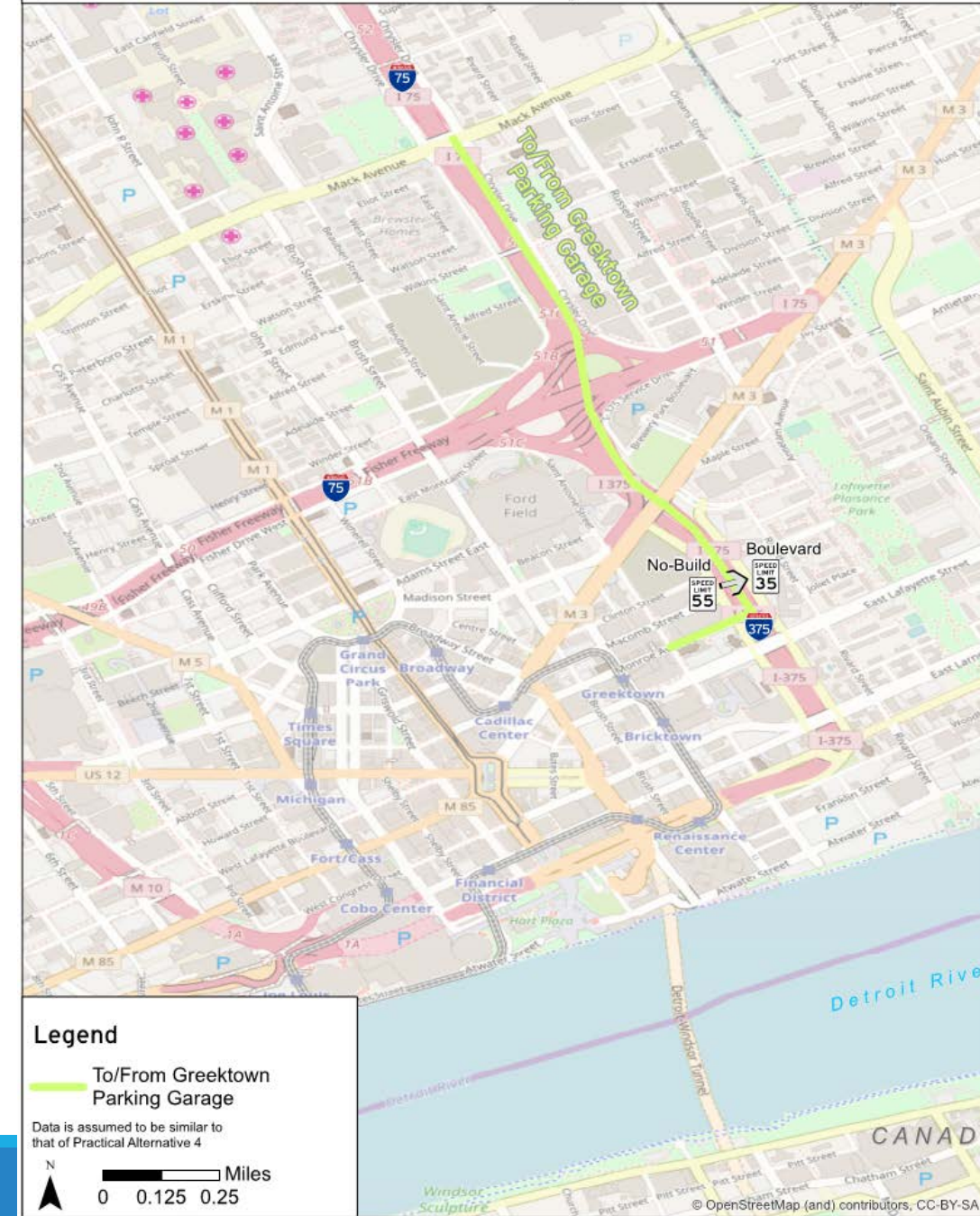
Morning Travel Times (minutes)



Afternoon Travel Times (minutes)



Travel Time Segments



Land Use

LAND-USE - PRACTICAL ALTERNATIVE

ALTERNATIVE 4 DEVELOPABLE AREA

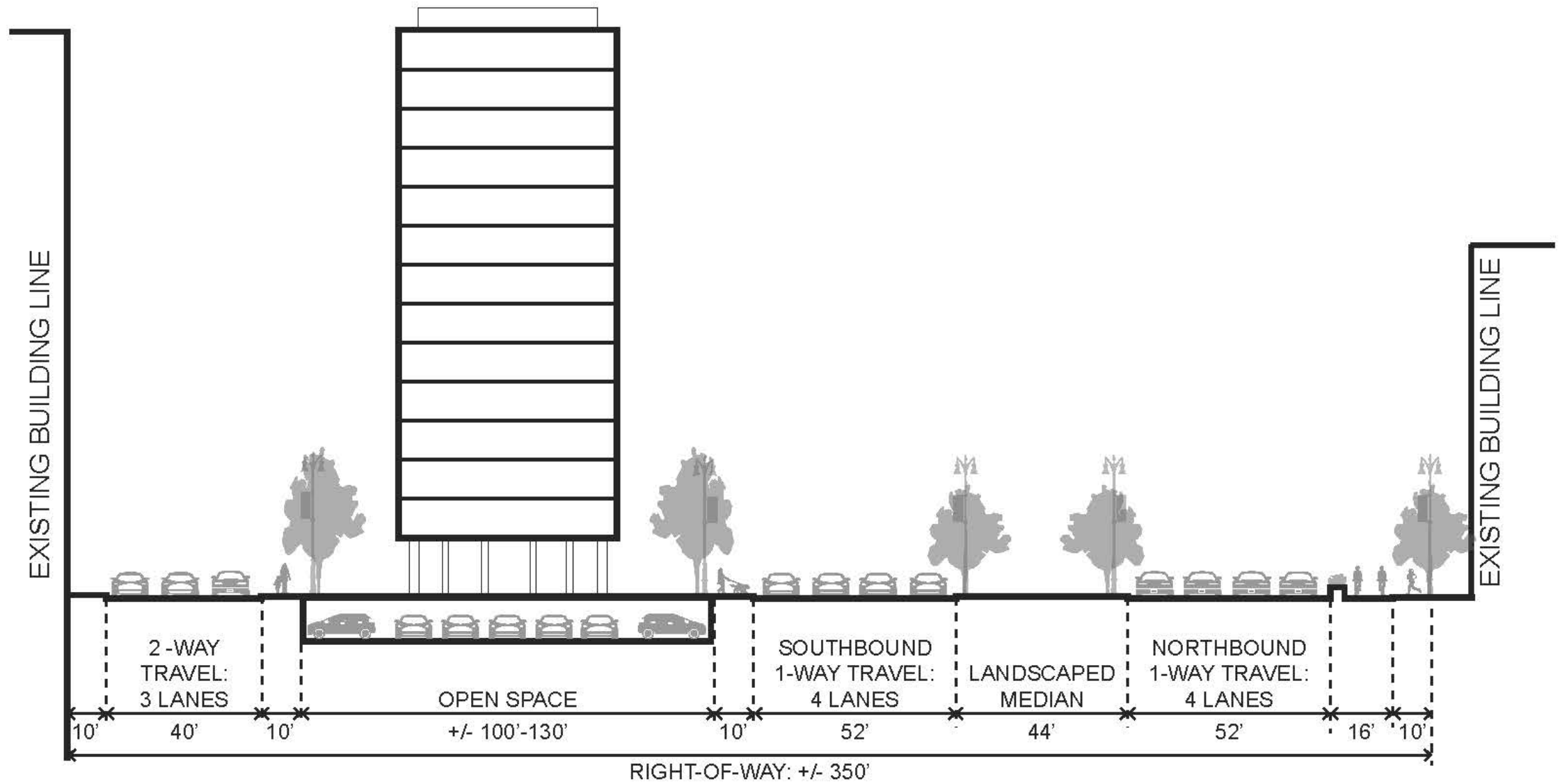


LAND-USE - PRACTICAL ALTERNATIVE

ALTERNATIVE 4 DEVELOPMENT

- PROPOSED BUILDING PAD
- VEGETATED TRAFFIC ISLAND
- PROPOSED BIKE LANE
- DISTURBED AREA TO BE RESTORED
- PROPOSED CONNECTOR TO I-75



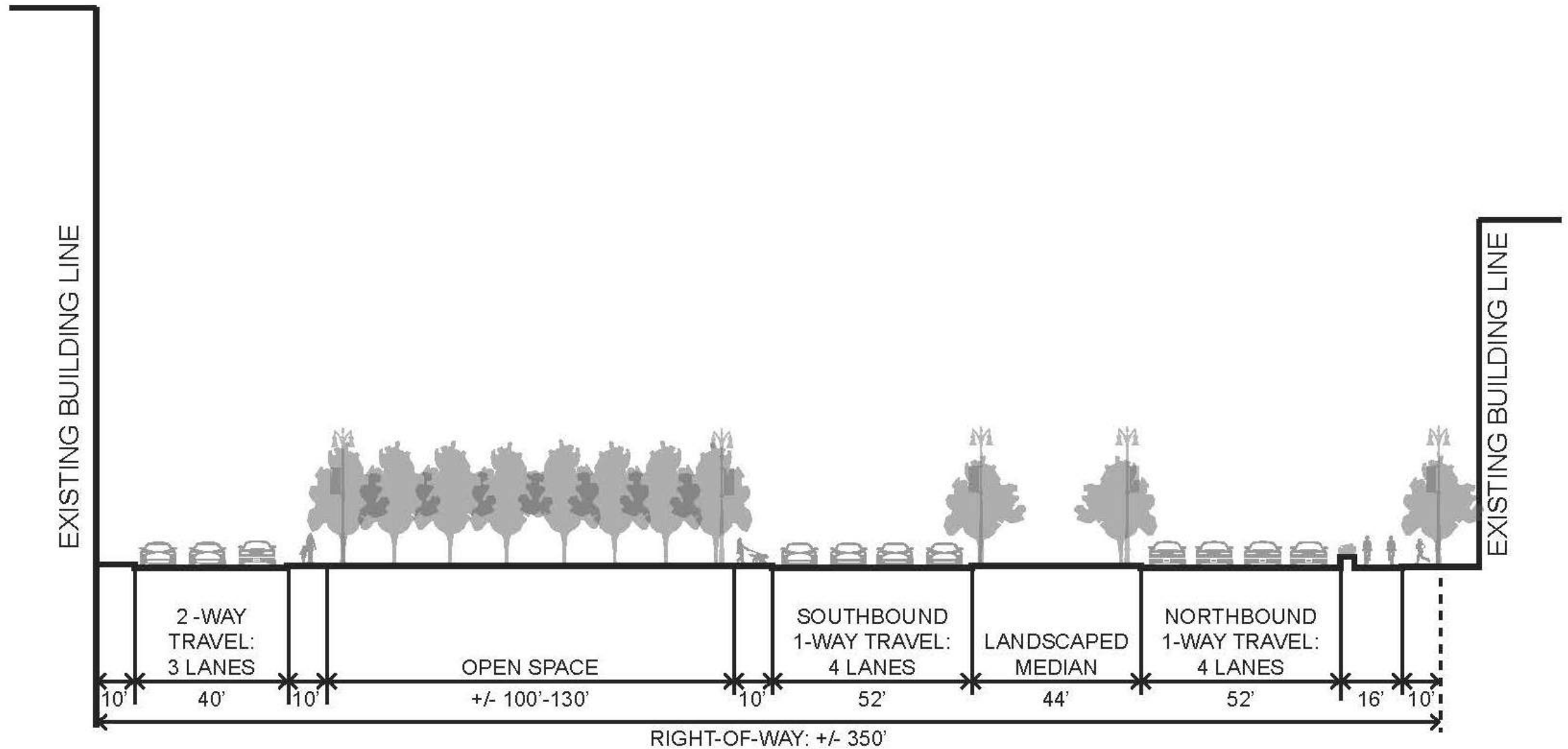


LAND-USE - PRACTICAL ALTERNATIVE

ALTERNATIVE 4 OPEN SPACE

- PROPOSED BUILDING PAD
- VEGETATED TRAFFIC ISLAND
- PROPOSED BIKE LANE
- DISTURBED AREA TO BE RESTORED
- PROPOSED CONNECTOR TO I-75





LAND-USE - PRACTICAL ALTERNATIVE

ALTERNATIVE 5 DEVELOPABLE AREA

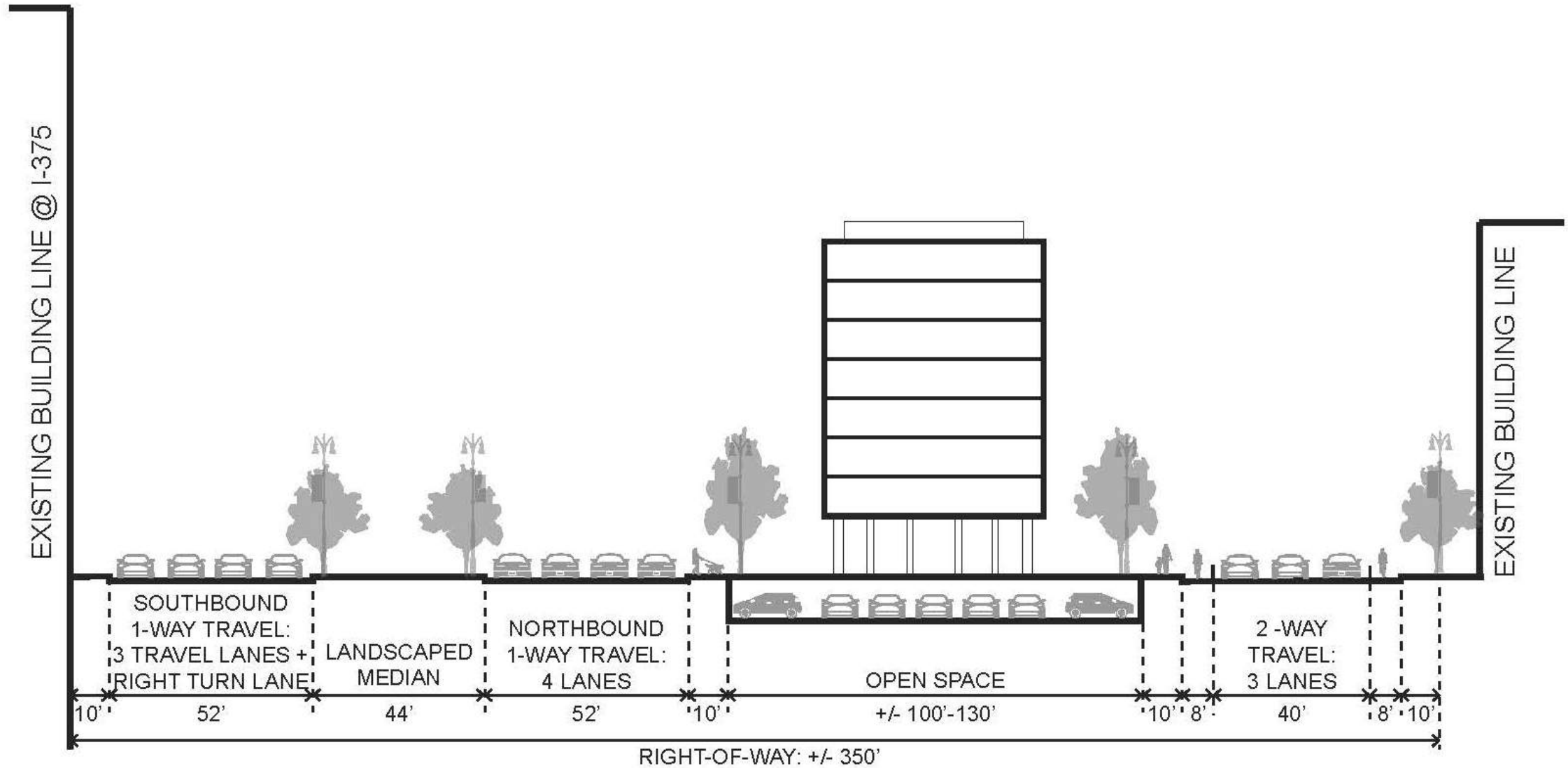


LAND-USE - PRACTICAL ALTERNATIVE

ALTERNATIVE 5 DEVELOPMENT

- PROPOSED BUILDING PAD
- VEGETATED TRAFFIC ISLAND
- PROPOSED BIKE LANE
- DISTURBED AREA TO BE RESTORED
- PROPOSED CONNECTOR TO I-75



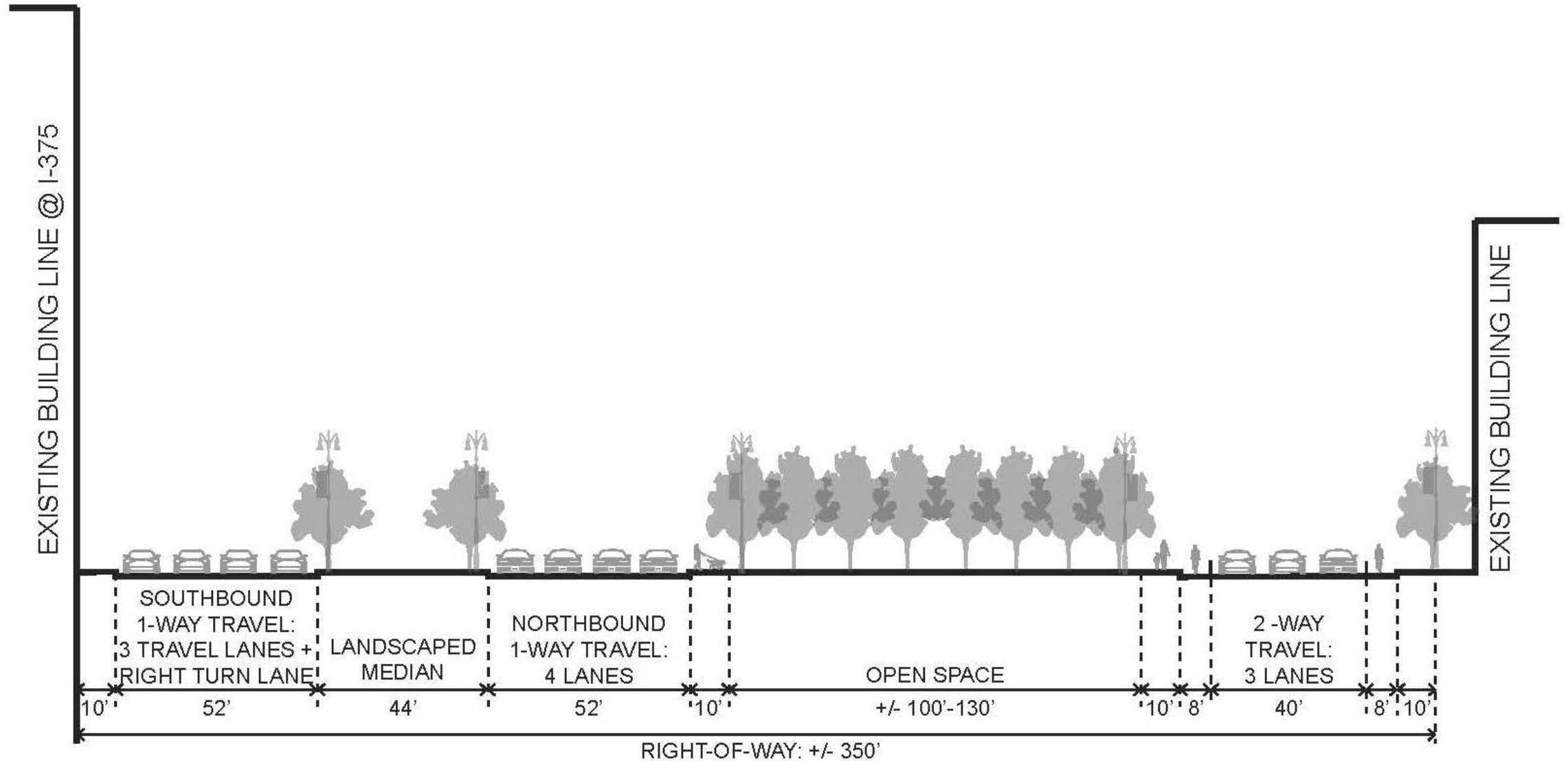


LAND-USE - PRACTICAL ALTERNATIVE

ALTERNATIVE 5 OPEN SPACE

- PROPOSED BUILDING PAD
- VEGETATED TRAFFIC ISLAND
- PROPOSED BIKE LANE
- DISTURBED AREA TO BE RESTORED
- PROPOSED CONNECTOR TO I-75





LAND USE DEVELOPMENT EXAMPLE

NEW HAMPSHIRE AVENUE
WASHINGTON DC



Next Steps

- ✓ Review/Analyze Feedback from Today's Meeting
- ✓ Study Team Develops the Environmental Assessment
- ✓ Continue Conversation with Advisory Committee Members
- ✓ Follow Progress on Study Web-site
- ✓ Public Hearing in Spring 2018

Contact us:

MDOT-I-375Corridor@michigan.gov

View our website:

www.Michigan.gov/i375study

THANK
YOU!